



The Hongkong Electric Co., Ltd.
香港電燈有限公司

Tariff Components Adjustment

2000

電費組合調整

LegCo 19/12/2000



管制計劃協議

The Scheme of Control Agreement

<ul style="list-style-type: none">• <u>目的</u> 鼓勵對電力系統的投資，使能以最低成本應付電力需求	<ul style="list-style-type: none">• <u>Objective</u> Encourage investment to finance power system requirements to meet demand at lowest possible costs
<ul style="list-style-type: none">• <u>機制</u> 如電力公司已履行義務，可計劃收取足夠收入以支付營運成本及達至准許利潤	<ul style="list-style-type: none">• <u>Mechanism</u> Power company can seek to achieve sufficient revenue to meet operating costs and permitted return provided it fulfils its obligations



二零零零年的加價壓力 Pressure for tariff increase in 2000

<ul style="list-style-type: none">• 電費自1998維持不變	<ul style="list-style-type: none">• Same electricity charge since 1998
<ul style="list-style-type: none">• 持續投資以配合需求及保證足夠及可靠之電力供應	<ul style="list-style-type: none">• Continued investment to meet demand and ensure adequate and reliable supply
<ul style="list-style-type: none">• 沒有過量發展基金	<ul style="list-style-type: none">• No excessive built-up of Development Fund



二零零零年的電費結構選擇

Options for tariff structure in 2000

每度(仙)

Cents/kWh

電費組合	(1) 增加 客戶之淨電費 Increase in Net Tariff payable by consumers	(2) 避免增加 客戶之淨電費 No increase in Net Tariff payable by consumers	Tariff Components
平均基本電費	105.7	105.7	Average Basic Tariff
燃料價條款折扣	-8.5	-15.2	Fuel Clause Rebate
減費折扣	-0.2	-0.2	Rate Reduction Rebate
淨電費	97.0	90.3	Net Tariff



選擇 – 使客戶在二零零零年應繳電費維持不變
Chosen option – no need for customers to pay more in 2000

每度(仙)

Cents/kWh

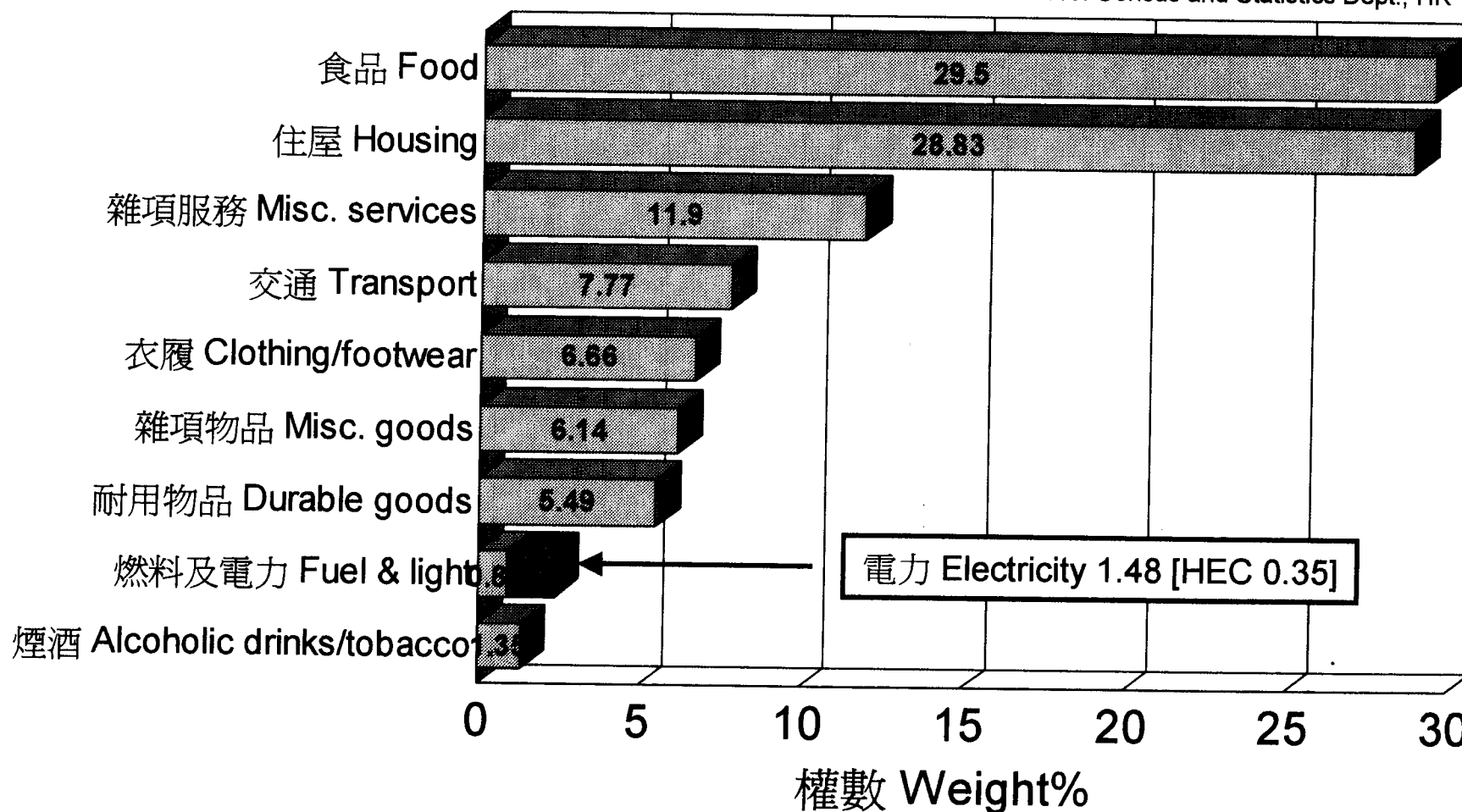
電費組合	1999	+/-	2000	Tariff Components
平均基本電費	99.4	6.3	105.7	Average Basic Tariff
燃料價條款折扣	-8.5	-6.7	-15.2	Fuel Clause Rebate
減費折扣	-0.6	0.4	-0.2	Rate Reduction Rebate
淨電費	90.3	0.0	90.3	Net Tariff



港燈在綜合消費物價指數的權數為0.35 HEC has a weight of 0.35 in Composite CPI

資料來源：香港政府統計處

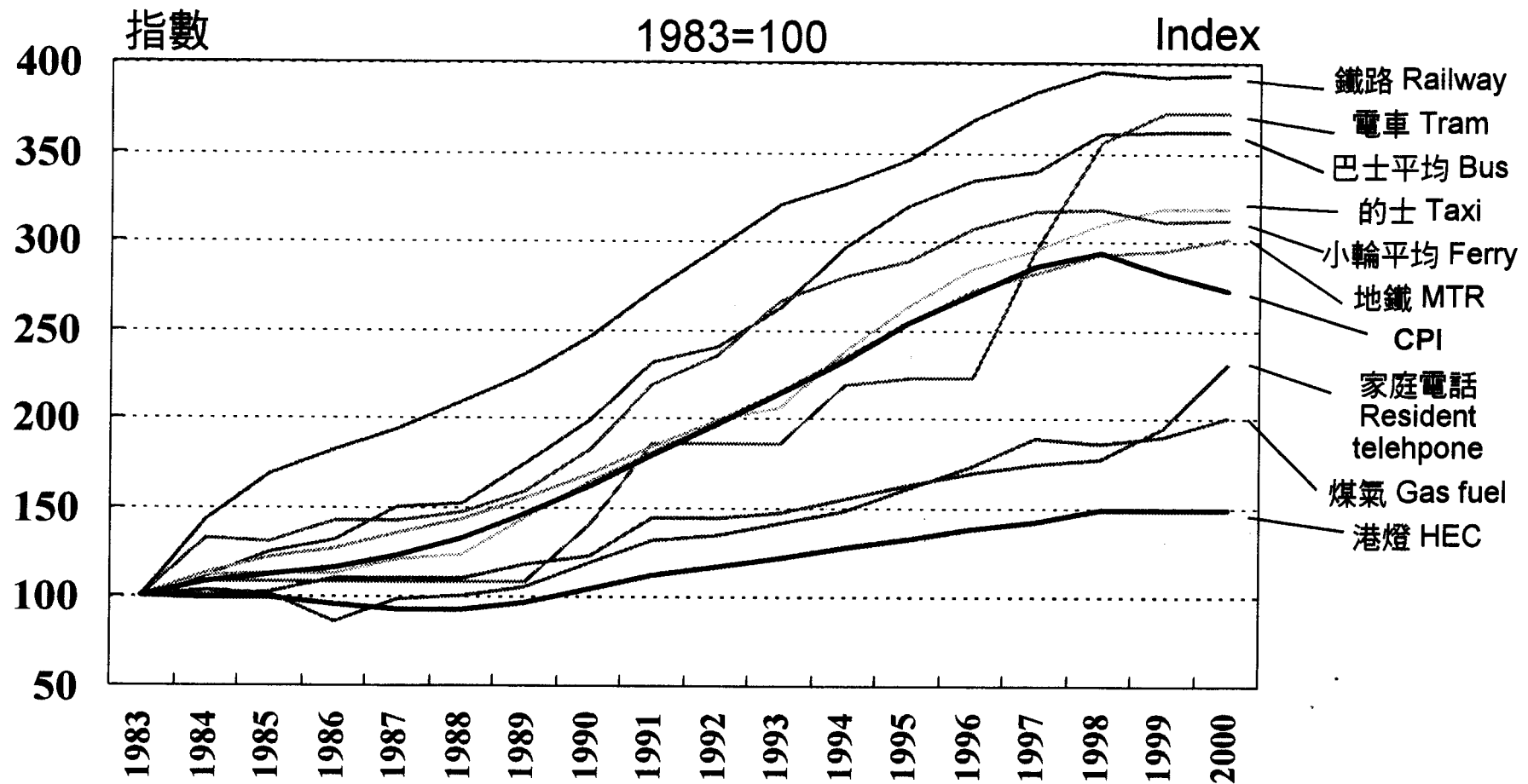
Source: Census and Statistics Dept., HK





電費加幅低於其他公共事業

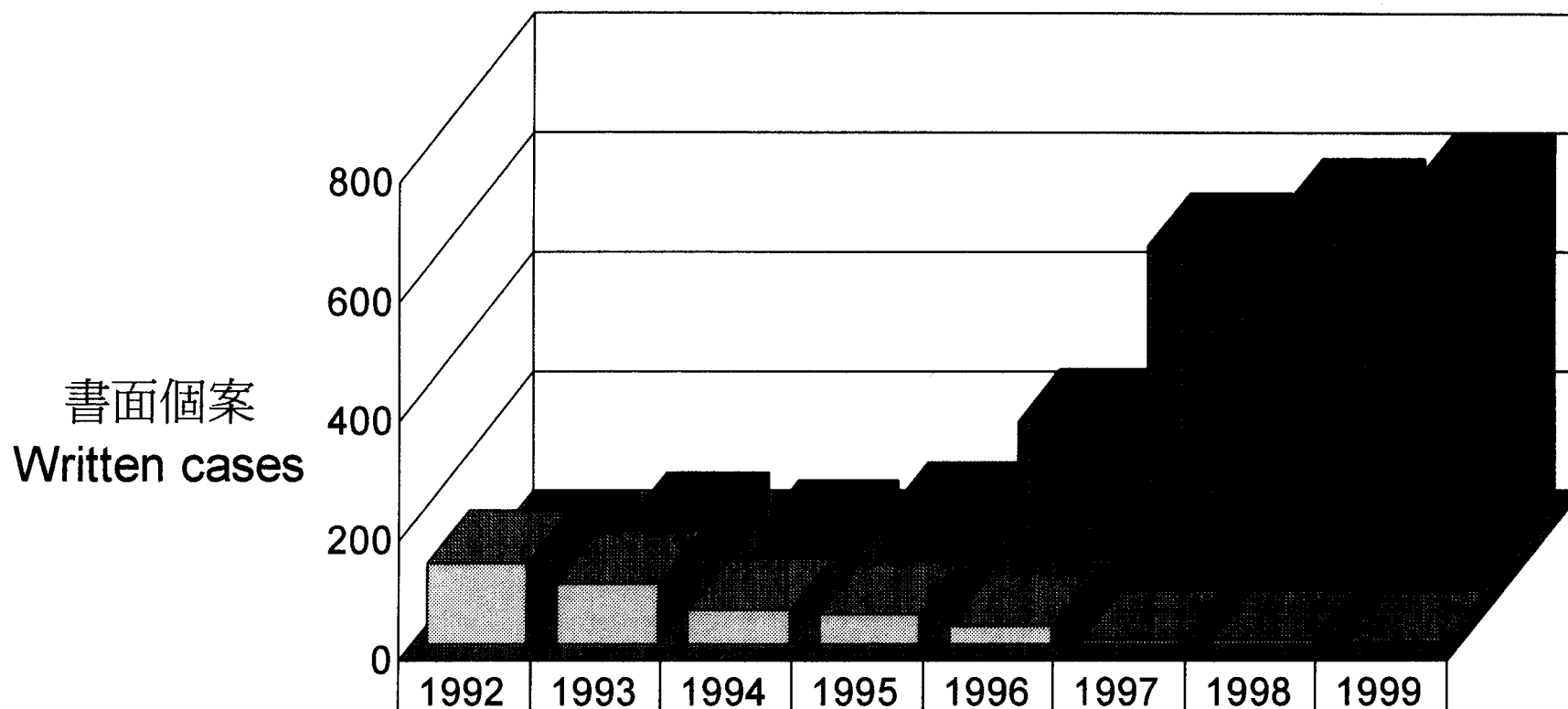
Electricity tariff increases lower than other utilities





不斷提高服務質素

Continuous improvement of services



■ 投訴 Complaints	136	101	58	49	30	6	6	4
■ 讚許 Commendations	25	59	44	74	232	527	584	629