

二零零一年人口普查  
所得有關勞工及人力事務  
的摘要結果簡介

二零零二年三月二十一日

**Briefing on the Summary Results  
of the 2001 Population Census  
Relating to Labour and Manpower Matters**

**21 March 2002**

# 人口普查結果的發布

## Dissemination of Population Census Results

- 已出版的刊物  
Published Reports

- 《簡要報告》  
“Summary Results”
- 《有關各區議會分區的基本統計表》  
“Basic Tables for District Council Districts”
- 《有關各選區的基本統計表》  
“Basic Tables for Constituency Areas”
- 《有關各規劃統計小區的基本統計表》  
“Basic Tables for Tertiary Planning Units”
- 《區議會分區及選區統計表附件—區域分界地圖》  
“Boundary Maps Complementary to Tables for District Council Districts and Constituency Areas”
- 《規劃統計小區統計表附件—區域分界地圖》  
“Boundary Maps Complementary to Tables for Tertiary Planning Units”

# 人口普查結果的發布

## Dissemination of Population Census Results

- 將出版的報告書

### Reports to be released later

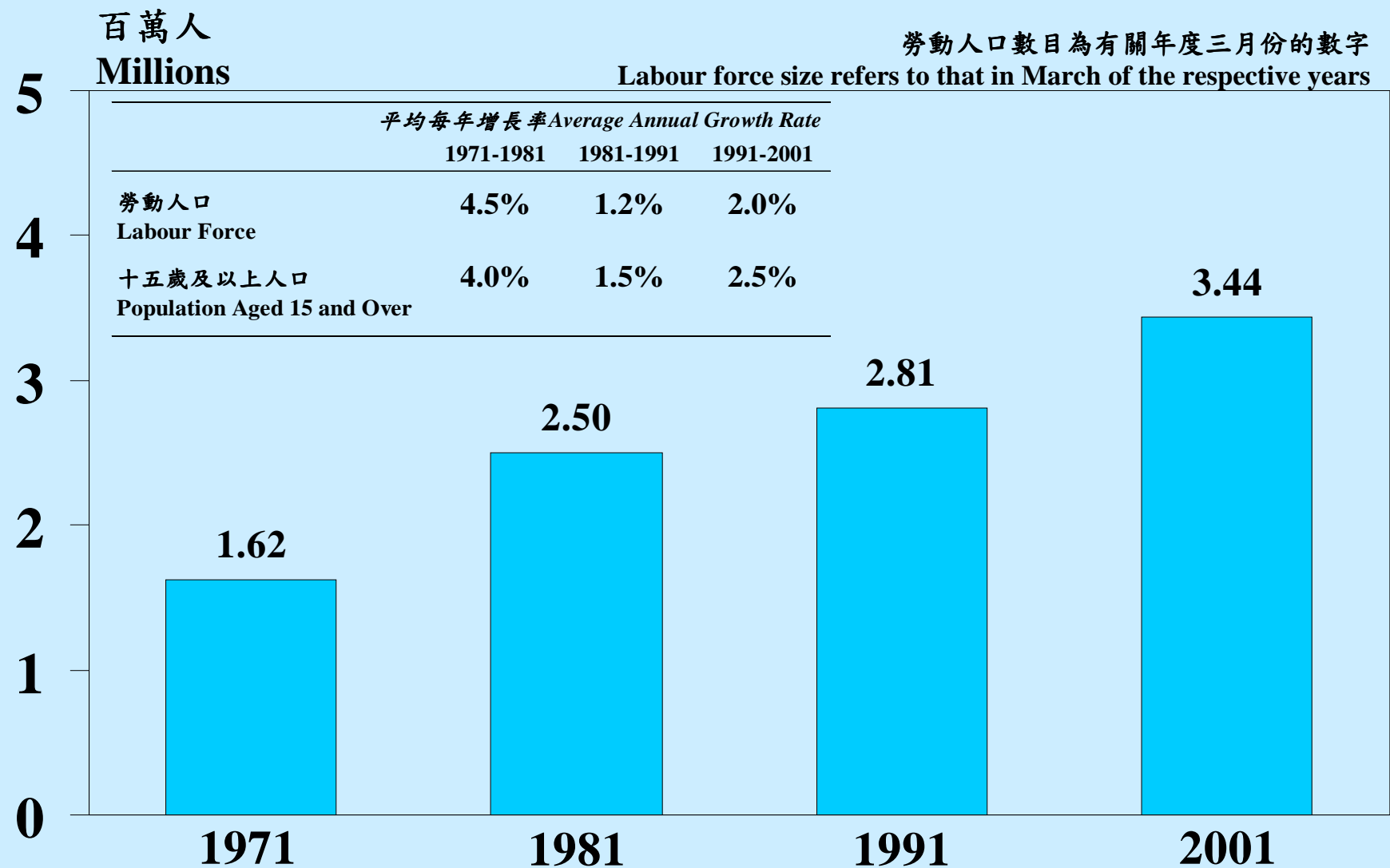
- 《主要報告》  
“Main Report”
- 《主要統計表》  
“Main Tables”
- 《統計圖解》  
“Graphic Guide”
- 一系列以人口分組的主題性報告  
A series of thematic reports on population sub-groups

- 電子媒介

### Electronic Media

- 《統計表唯讀光碟》  
“TAB on CD-ROM”
- 《地圖唯讀光碟》  
“MAP on CD-ROM”
- 《增值唯讀光碟》  
“Value-added CD-ROM”

# 勞動人口數目及增長 Size and Growth of Labour Force



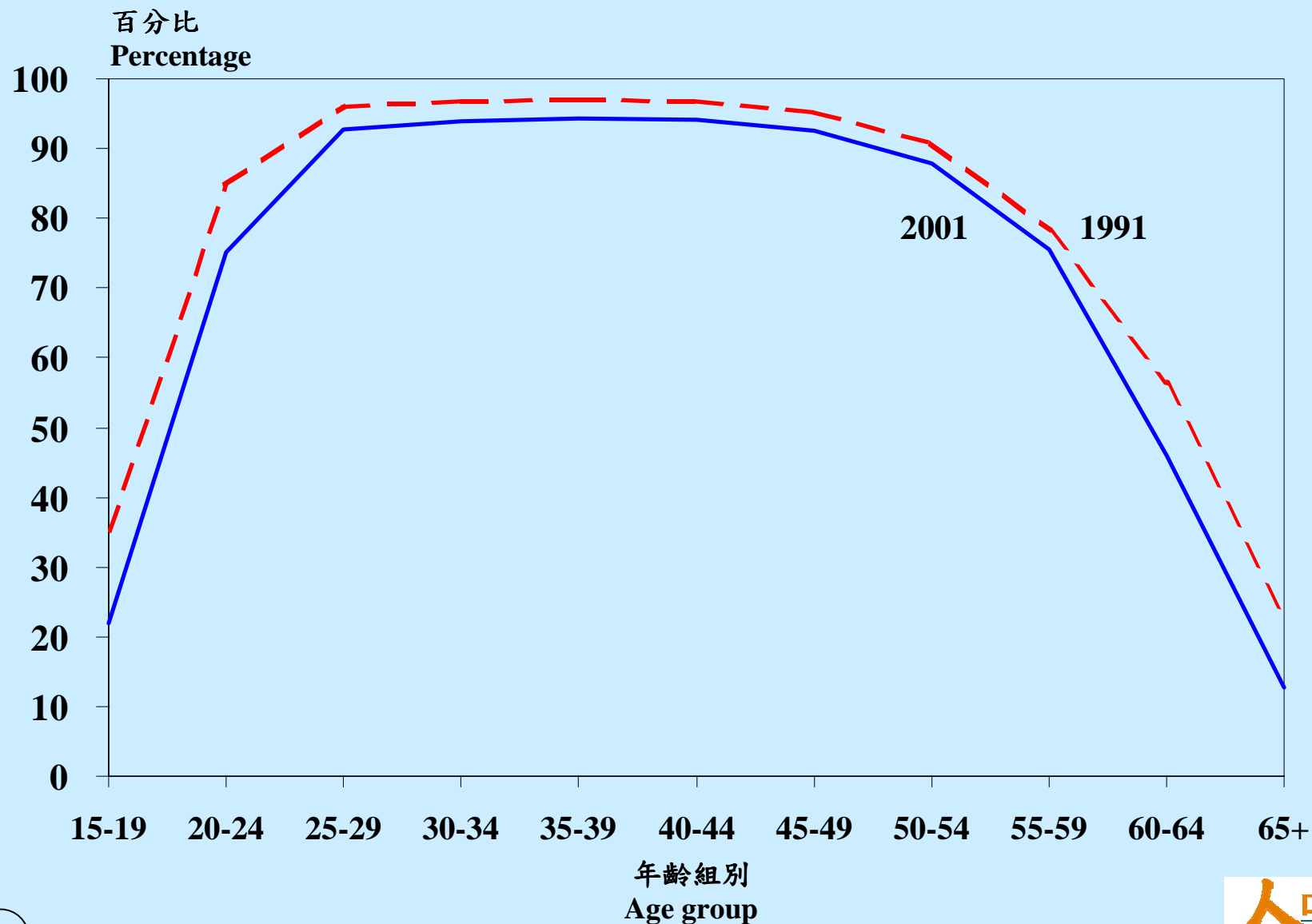
## 勞動人口 Labour Force

	百萬人 Millions		
性別 Sex	1991	2001	增加 <i>Increase</i>
男 Male	1.74	1.95	0.21
女 Female	1.07	1.49	0.42
合計 Both Sexes	2.81	3.44	0.63

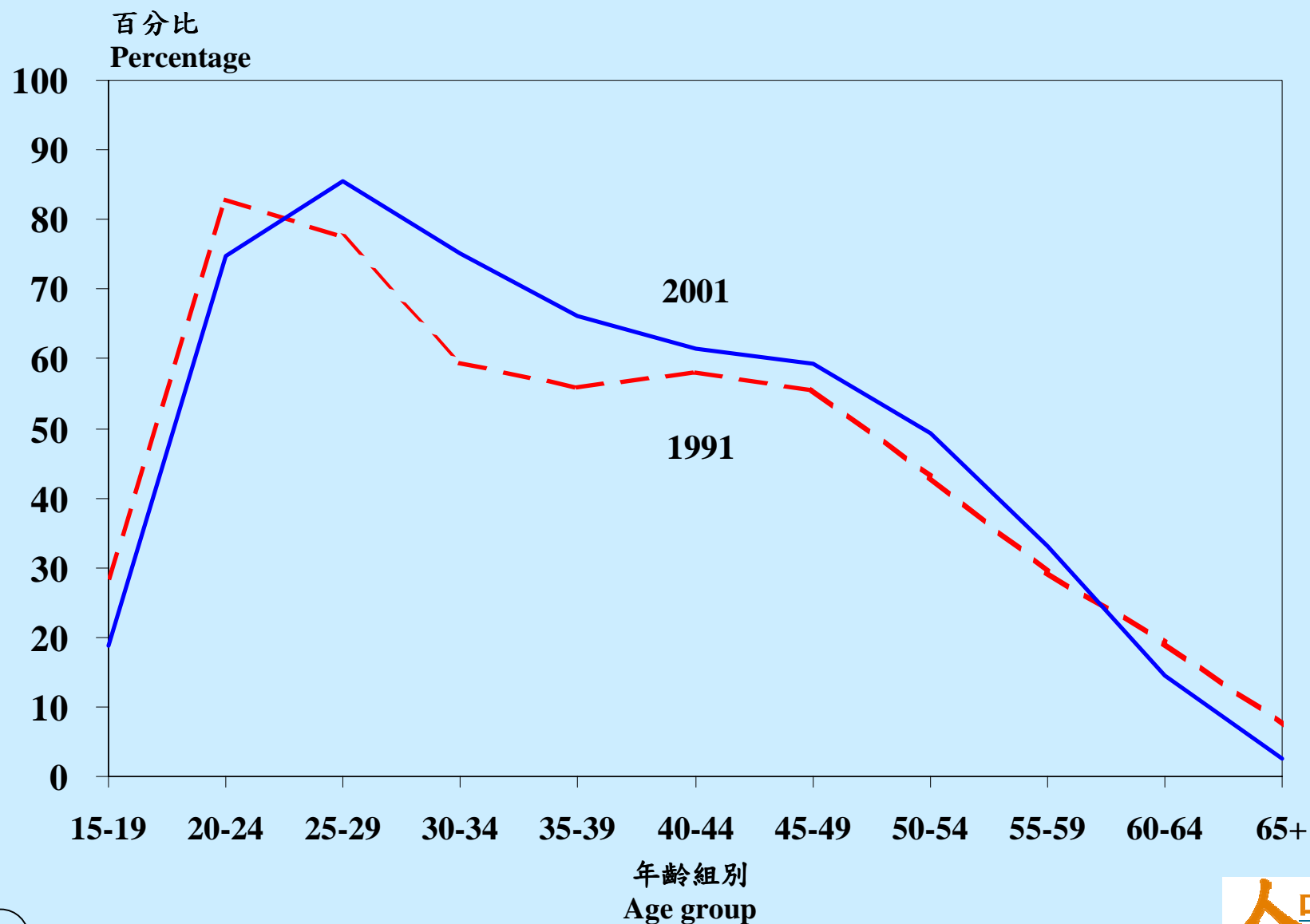
# 勞動人口參與率 Labour Force Participation Rate

性別 Sex	包括外籍家庭傭工 Including Foreign Domestic Helpers		不包括外籍家庭傭工 Excluding Foreign Domestic Helpers	
	1991	2001	1991	2001
男 Male	78.7%	71.9%	78.7%	71.9%
女 Female	49.5%	51.6%	48.2%	48.4%
合計 Both Sexes	64.3%	61.4%	63.9%	60.1%

# 按年齡組別劃分的男性勞動人口參與率 Labour Force Participation Rates of Males by Age Group



# 按年齡組別劃分的女性勞動人口參與率 Labour Force Participation Rates of Females by Age Group

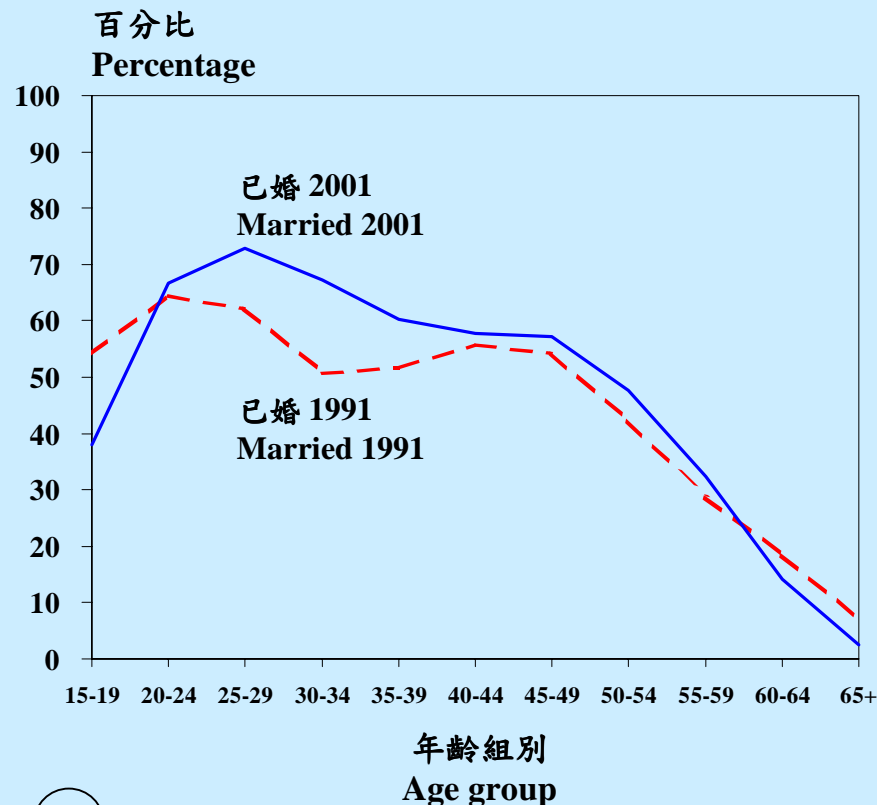


# 已婚及從未結婚的女性勞動人口參與率

## Labour Force Participation Rates of Married and Never-married Females

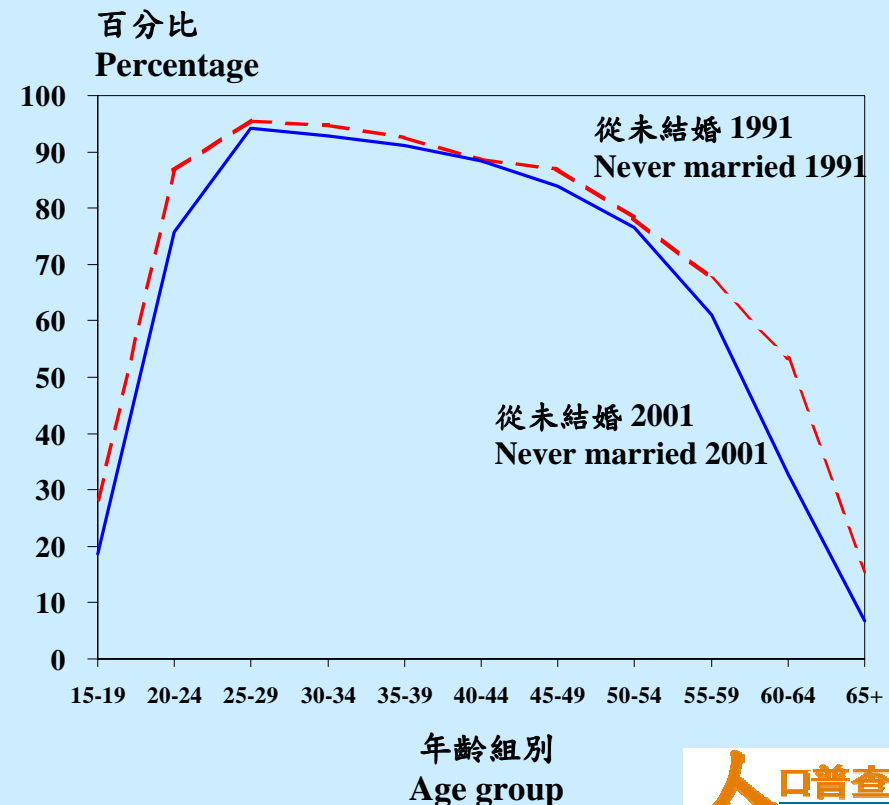
女性勞動人口參與率  
Labour Force Participation  
Rate of Females

	<u>1991</u>	<u>2001</u>
已婚 Married	41.3%	44.5%



女性勞動人口參與率  
Labour Force Participation  
Rate of Females

	<u>1991</u>	<u>2001</u>
從未結婚 Never-married	69.8%	67.9%



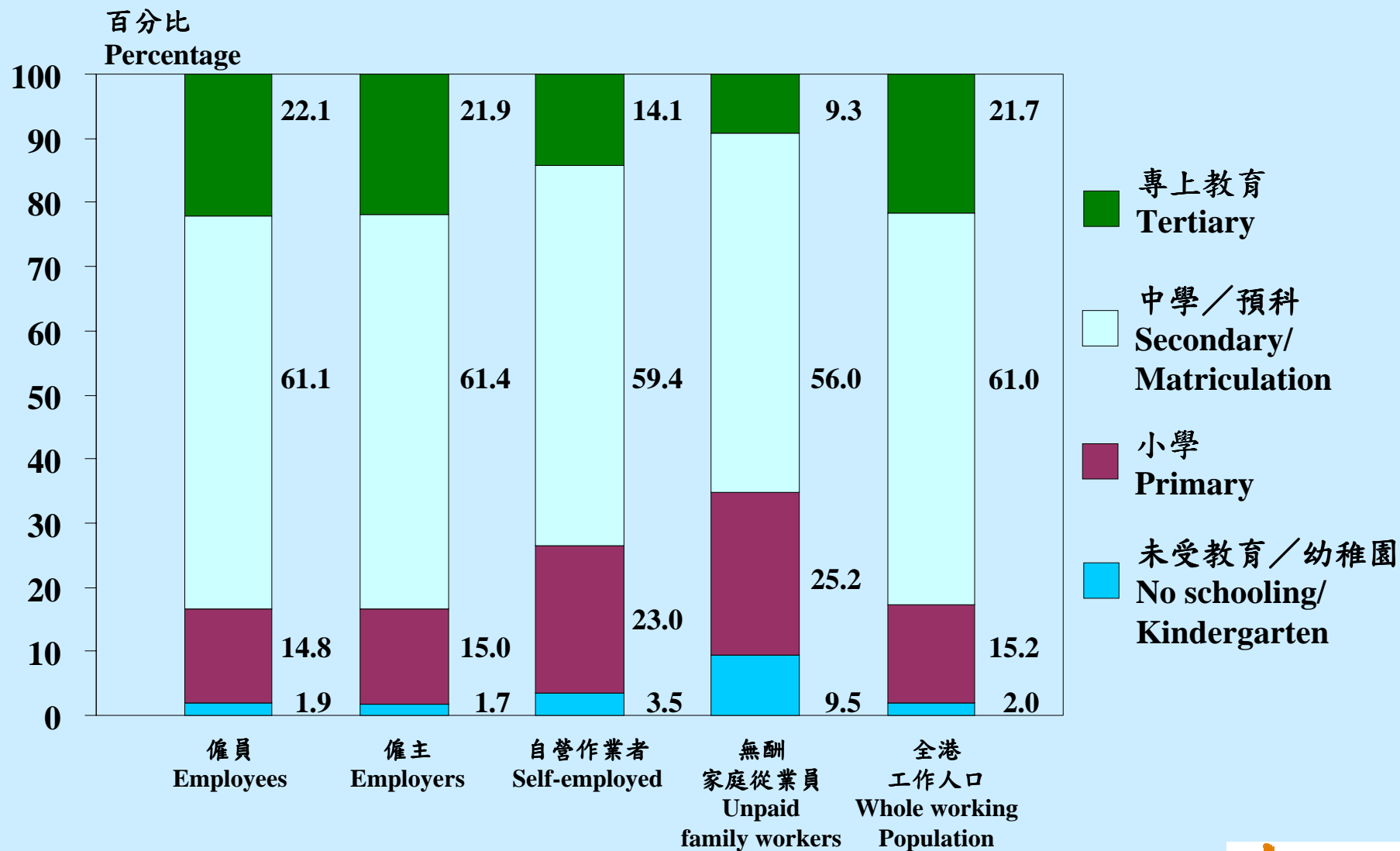
## 按教育程度劃分的工作人口比例

### Proportion of Working Population by Educational Attainment

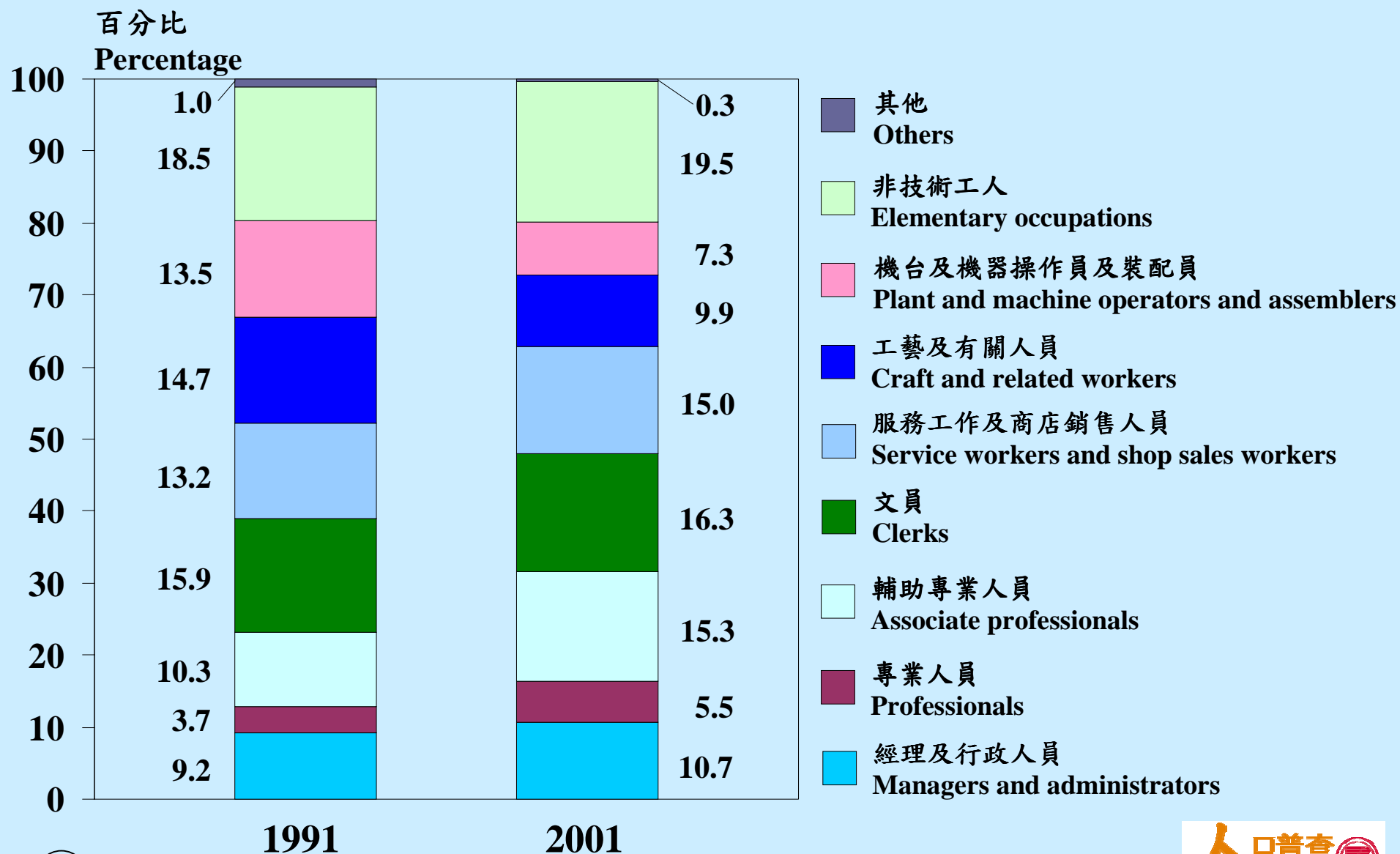
教育程度 Educational Attainment	1991	2001
未受教育／幼稚園 No schooling/Kindergarten	5.6%	2.0%
小學 Primary	22.9%	15.2%
中學／預科 Secondary/Matriculation	57.3%	61.0%
專上教育 Tertiary	14.1%	21.7%
總計 Total	100.0%	100.0%

# 二零零一年按教育程度及經濟活動身分劃分的工作人口

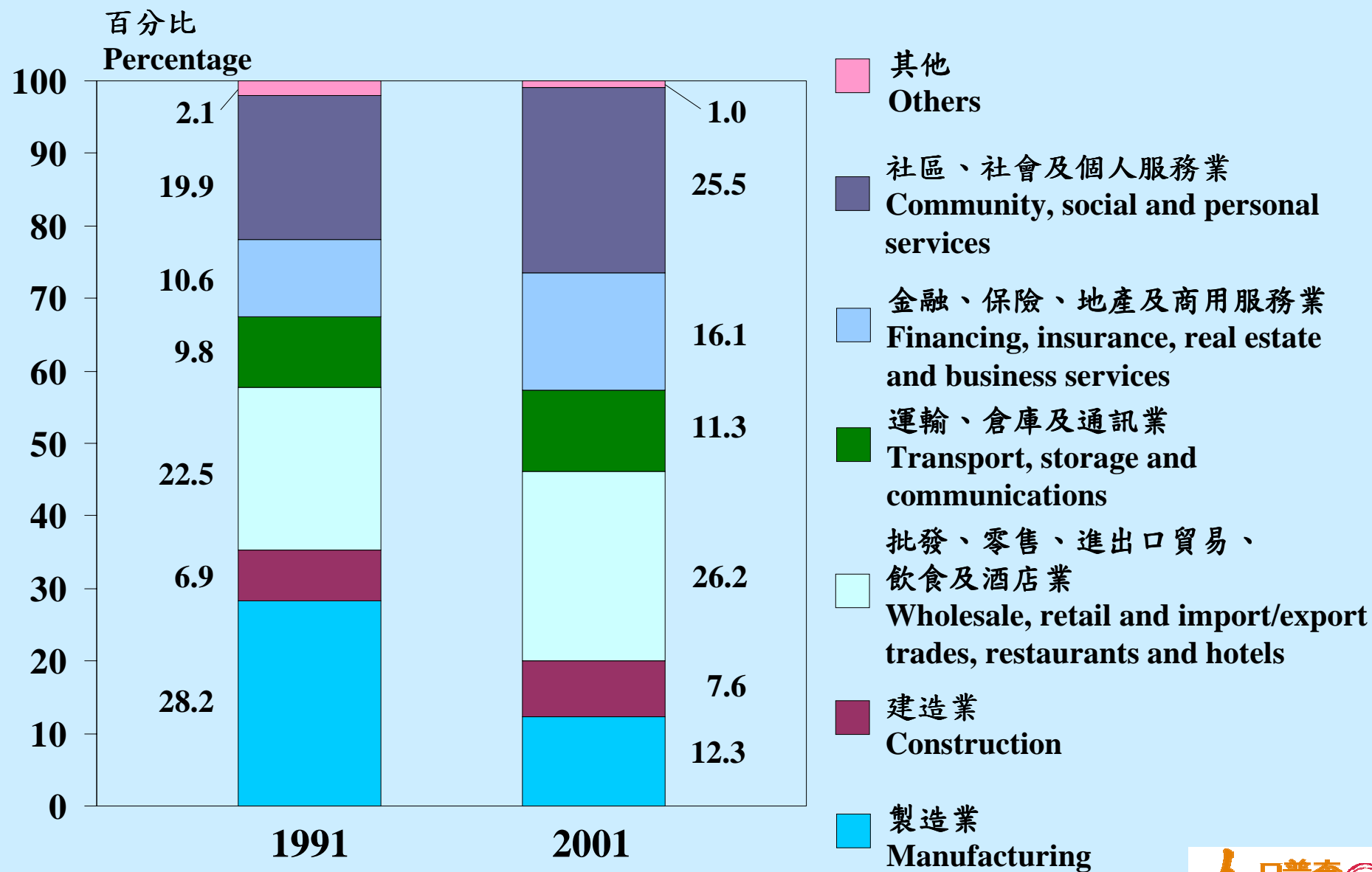
## Working Population by Educational Attainment and Economic Activity Status, 2001



# 按職業劃分的工作人口 Working Population by Occupation



# 按行業劃分的工作人口 Working Population by Industry



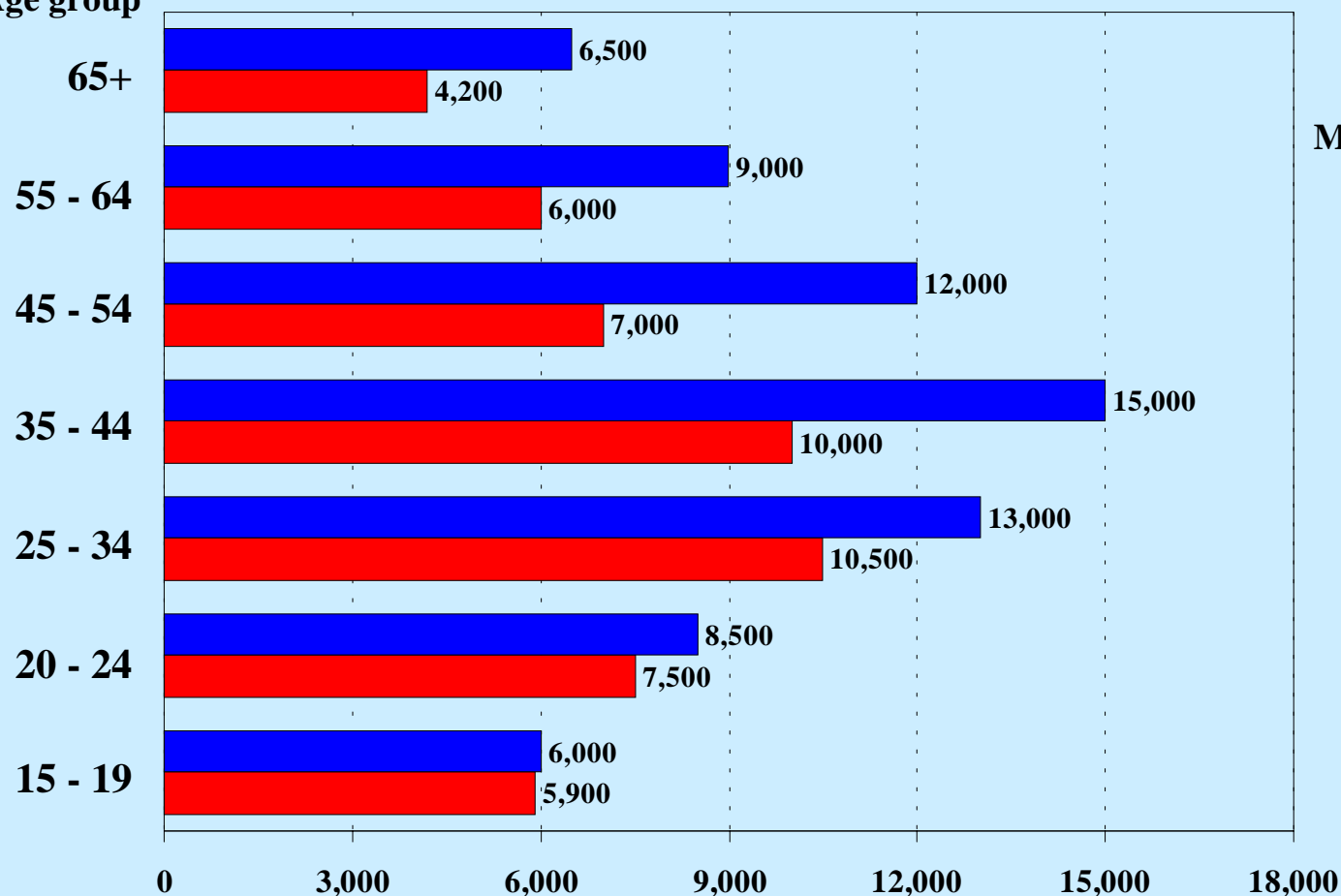
# 工作人口的每月主要職業收入中位數 **Median Monthly Income from Main Employment of Working Population**

	1991	2001	變動 Change
每月主要職業收入中位數（港元） <b>Median Monthly Income from Main Employment (HK\$)</b>	<b>5,170</b>	<b>10,000</b>	<b>+93%</b>
綜合消費物價指數 <b>Composite Consumer Price Index</b>			<b>+53%</b>

# 二零零一年按性別及年齡組別劃分的工作人口的每月主要職業收入中位數

## Median Monthly Income from Main Employment of Working Population by Sex and Age Group, 2001

年齡組別  
Age group



每月主要職業  
收入中位數 (港元)  
Median Monthly Income from  
Main Employment (HK\$)

男 12,000

Male

女 8,900

Female

合計 10,000

Both Sexes

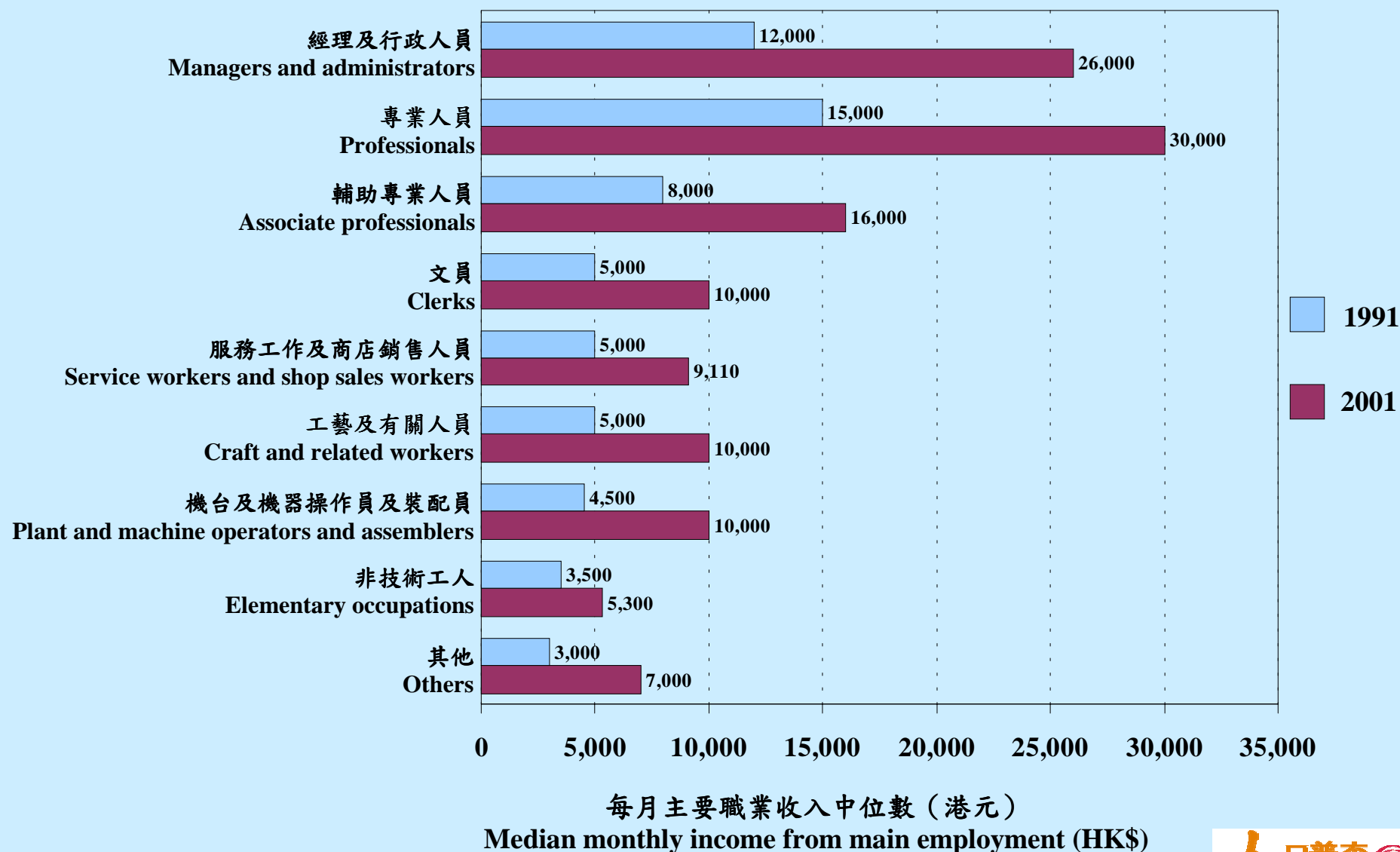
男  
Male

女  
Female

每月主要職業收入中位數 (港元)  
Median monthly income from main employment (HK\$)

# 按職業劃分的工作人口的每月主要職業收入中位數

## Median Monthly Income from Main Employment of Working Population by Occupation



多謝

**Thank you**