



中 九 龍 幹 線
CENTRAL KOWLOON ROUTE



中九龍幹線
Central
Kowloon Route

T2公路
Road T2

將軍澳西岸公路
Tseung Kwan O
Western Coast Road

十一號幹線 *Route 11*



原建議路線
Original Alignment

雙層隧道
Double Deck Tunnel

原建議海岸線
Original Reclamation

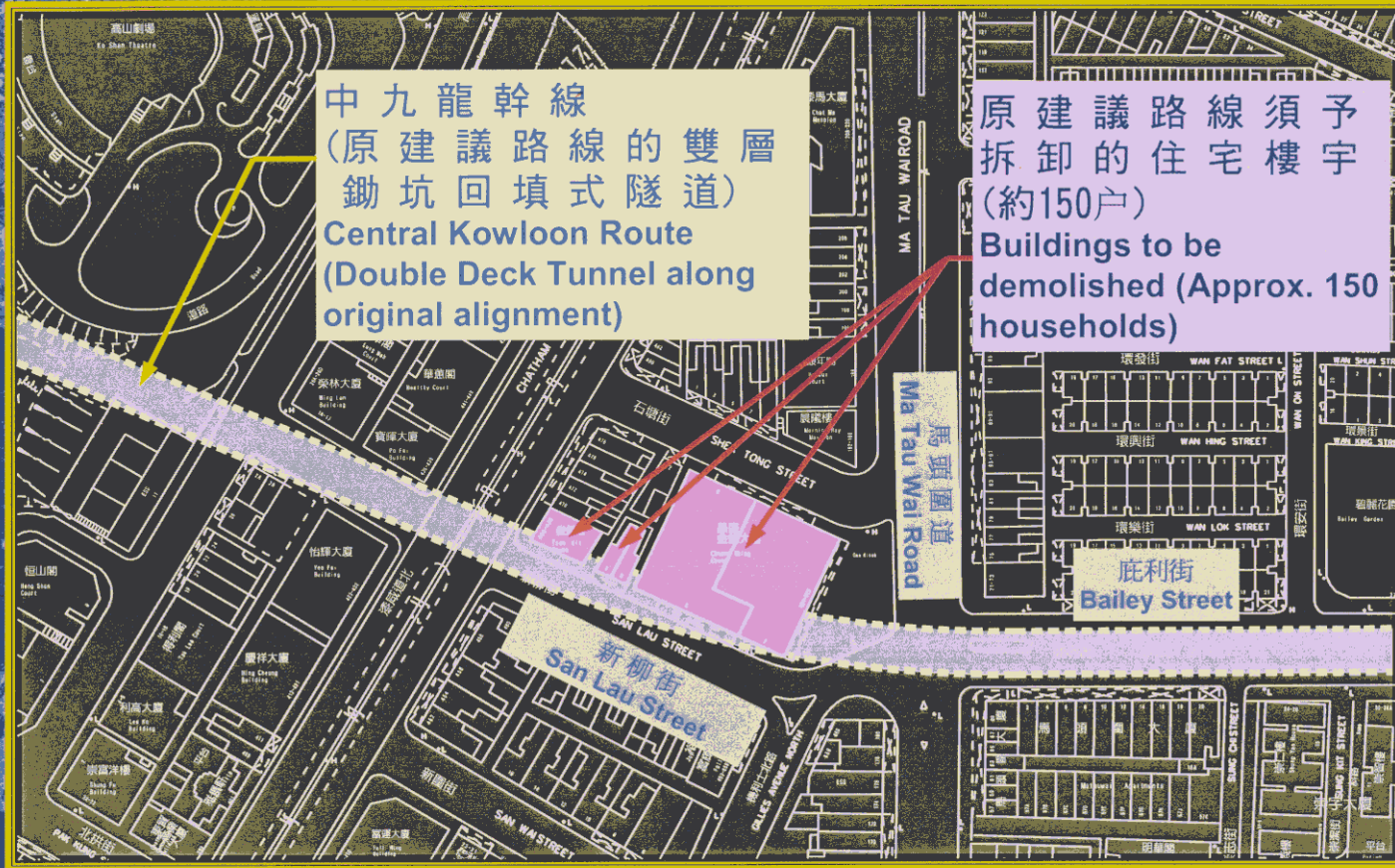
中九龍幹線 **CENTRAL KOWLOON ROUTE**



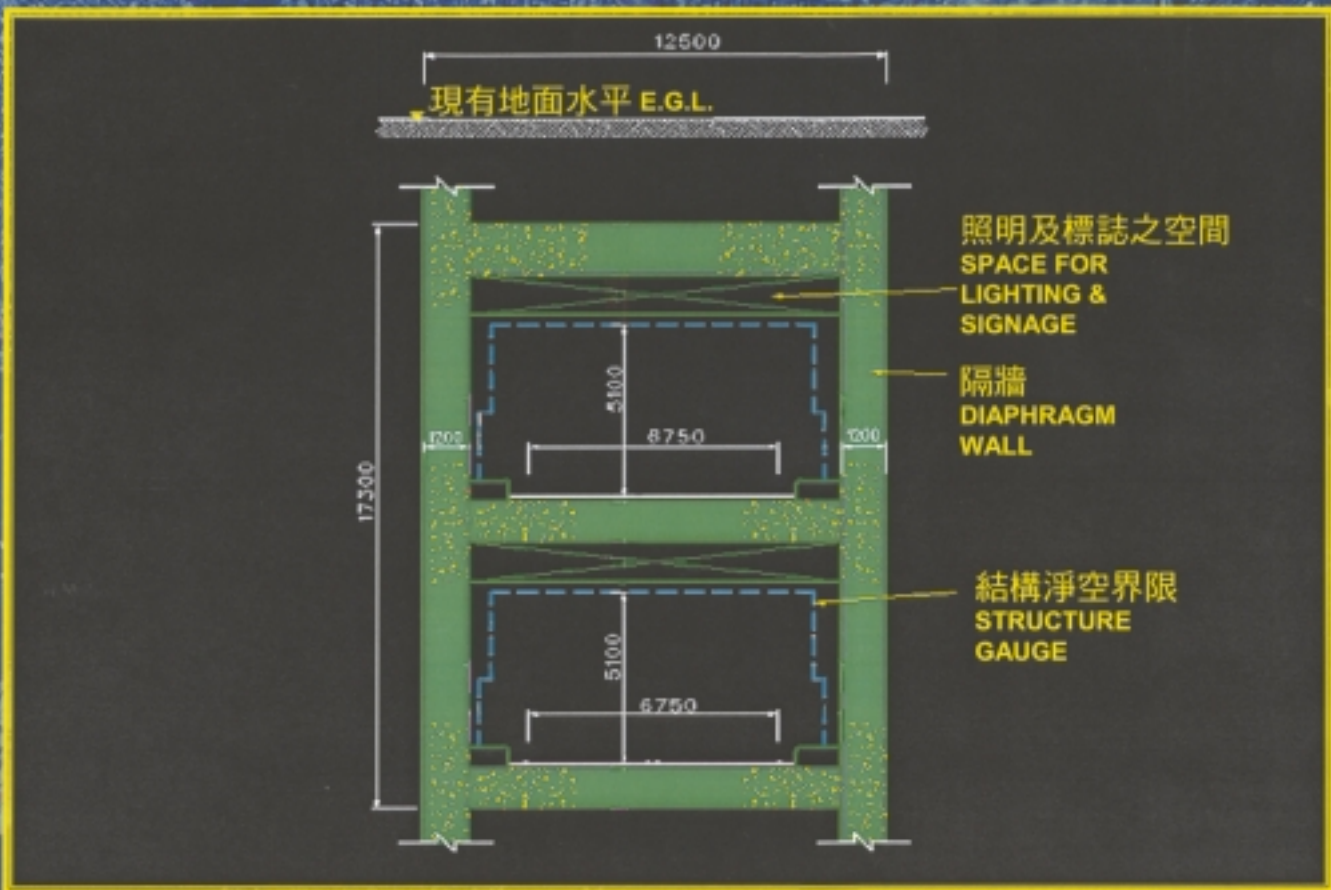


中九龍幹線
(原建議路線的雙層
鋤坑回填式隧道)
Central Kowloon Route
(Double Deck Tunnel along
original alignment)

原建議路線須予
拆卸的住宅樓宇
(約150戶)
Buildings to be
demolished (Approx. 150
households)



受影響住宅樓宇 **Affect Residential Buildings**



原建議雙層隧道橫切面

Originally Proposed Double Deck Tunnel Section

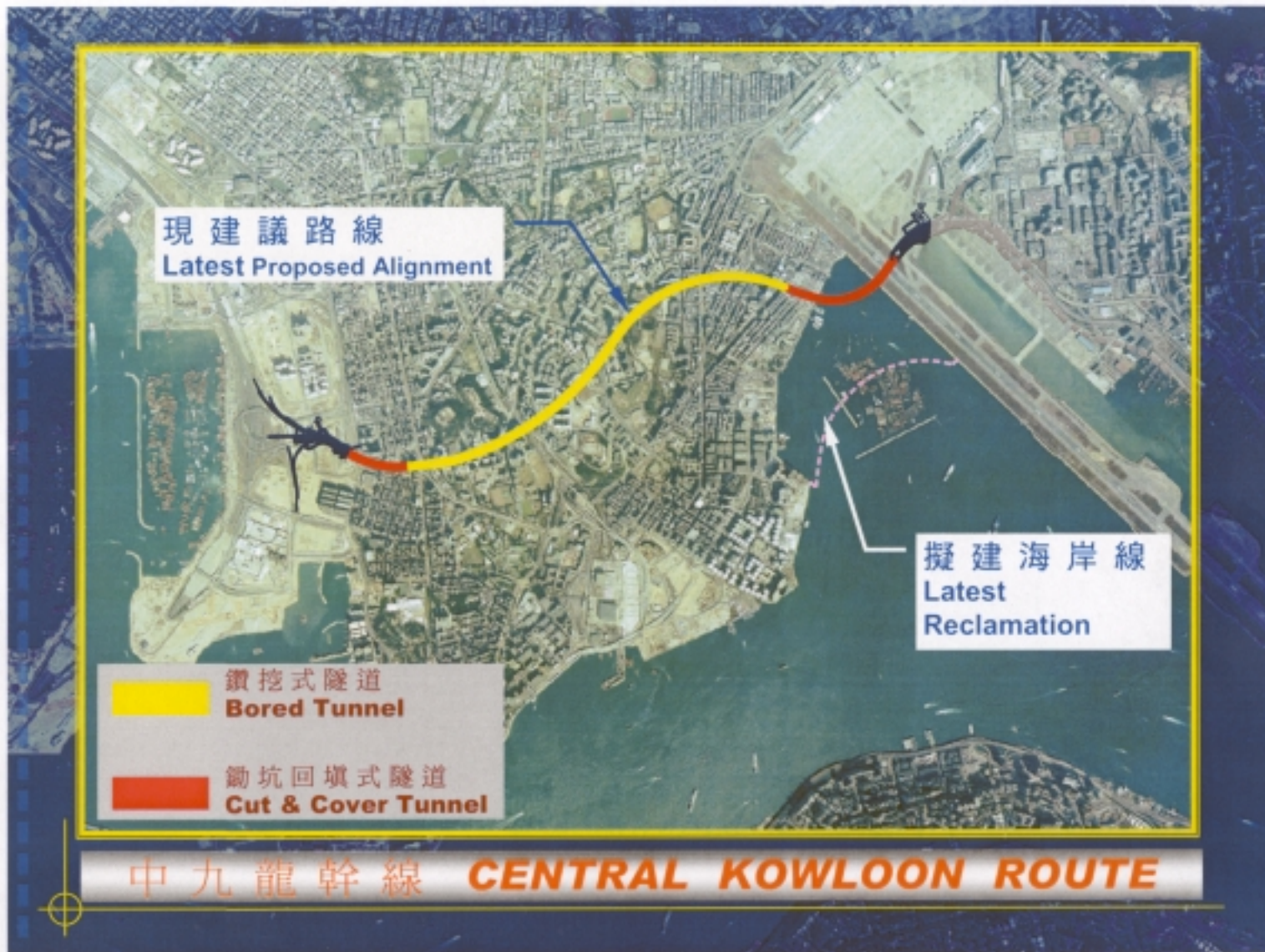
現建議路線
Latest Proposed Alignment

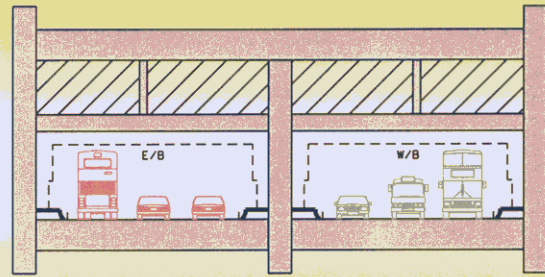
鑽挖式隧道
Bored Tunnel

掘坑回填式隧道
Cut & Cover Tunnel

擬建海岸線
Latest
Reclamation

中九龍幹線 **CENTRAL KOWLOON ROUTE**



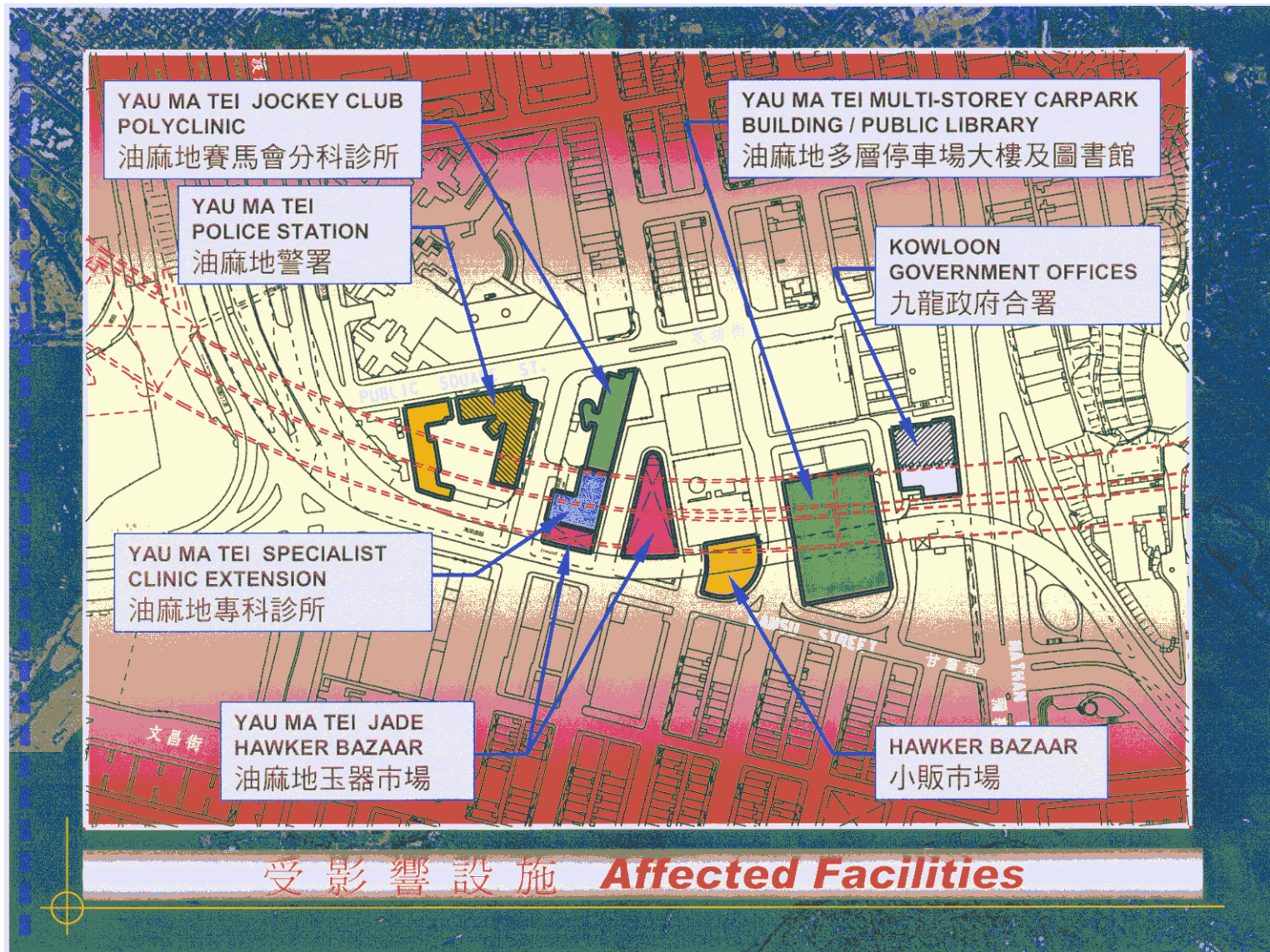


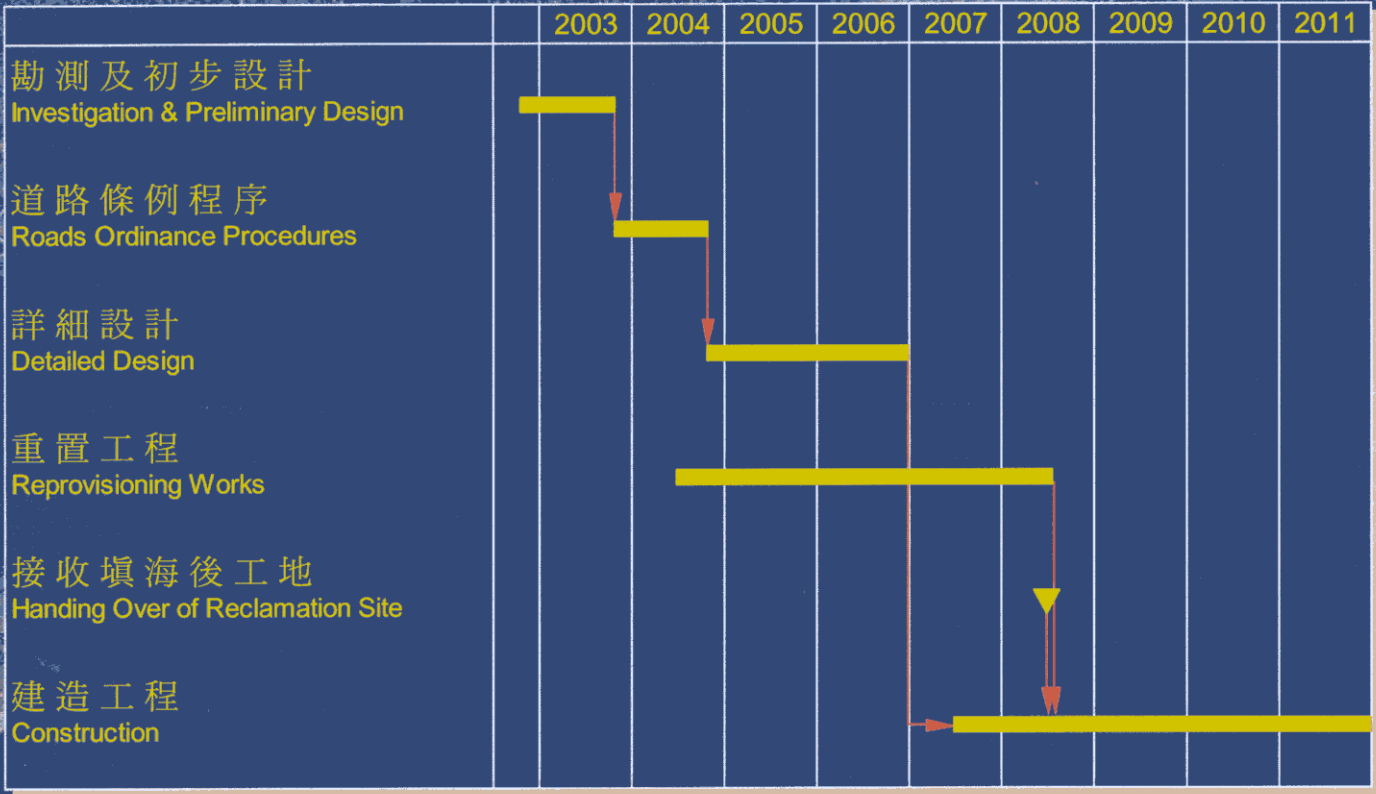
兩端之鋤坑回填式隧道
Cut & Cover Tunnel at Both Ends



鑽挖式隧道
Bored Tunnels

典型隧道橫切面 **Typical Sections**





預計進度計劃 **Tentative Programme**



油麻地警署
Yau Ma Tei Police Station



九龍政府合署
Kowloon Government Offices

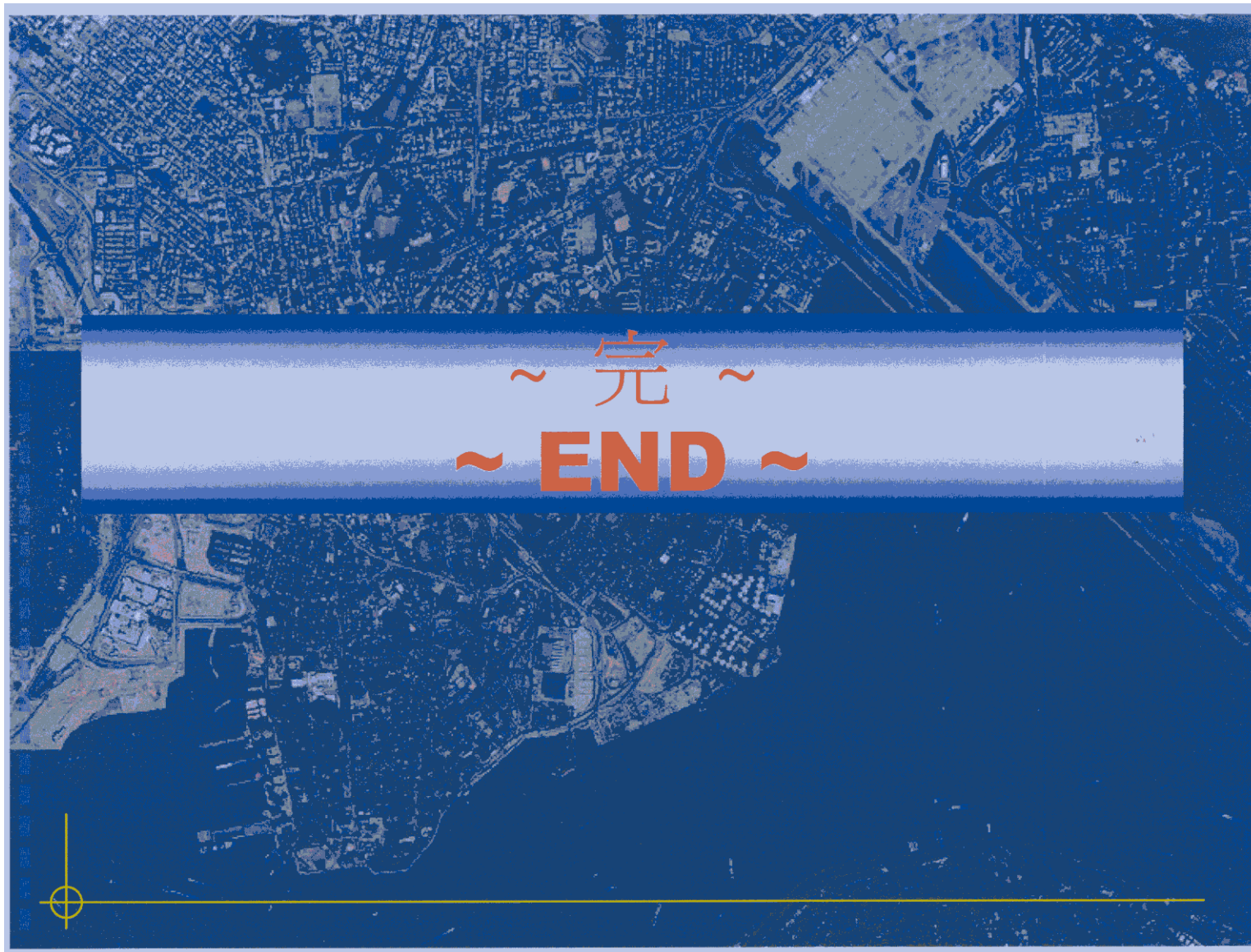


油麻地多層停車場大樓
Yau Ma Tei Multi-Storey
Car Park Building



油麻地專科診所
Yau Ma Tei Jockey Club
Specialist Clinic Extension





~ 完 ~
~ END ~