

NOTE FOR PUBLIC WORKS SUBCOMMITTEE OF FINANCE COMMITTEE

Supplementary information on school projects

INTRODUCTION

_____ In considering papers referenced PWSC(2001-02)57, 58, 59 and 60 on four primary schools and eight secondary schools (as listed in Enclosure 1) at the Public Works Subcommittee meeting on 17 October 2001, Members requested for additional information on -

- (a) the average space allowed for staff room before and after adoption of the Year 2000 (Y2K) school design;
- (b) the viability of lengthening the running track from 60 metres to 100 metres for the two schools covered under **232ES** and **279EP** in Area 20, Tung Chung;
- (c) the resident intake schedule of the public housing in Area 36, Fanling;
- (d) the preference of the school sponsoring bodies for the two schools covered by **239ES** and **284EP** in Area 36, Fanling, on how the mini-soccer pitch should be paved; and
- (e) the plan to meet the projected shortfall of 75 classrooms in the Wong Tai Sin District and a layout plan of the rooftop facilities of **292EP**.

THE ADMINISTRATION'S RESPONSE

Space allowed for staff room

2. A comparison of the floor areas allowed for staff rooms before and after adoption of the Y2K school design is as follows -

/Type

Type of school	Floor area of staff room (square meters)	
	(Pre-Y2K design)	(Y2K design)
24-classroom primary school	106 ¹	220
30-classroom primary school	233 ²	268
30-classroom secondary school	225 ³	318

3. Under the Y2K design, each teaching staff has a minimum space entitlement of 4.8 square meters. Besides, the Principal, Deputy Principal(s), Discipline Master and Career Master (secondary school only) will have their own offices ranging from ten to 14 square meters.

Running track

4. The Director of Architectural Services has revised the site plan for the two schools covered under **232ES** and **279EP** in Area 20, Tung Chung, to allow for the lengthening of the running track from 60 meters to 100 meters. We have secured the support of the sponsoring body for the two schools to the revised layout. The revised site plan is at Enclosure 2.

Resident intake schedule

5. The public housing development in Area 36, Fanling, will be carried out in four phases. The first phase covers only commercial and carpark development. Details of the flat provision and resident intake are as follows -

/Phase

¹ The standard was based on the 24-classroom school model built in 1980s.

² The standard was based on the 95 design model for a 30-classroom primary school.

³ The standard was based on the 95 design model for a 26-classroom secondary school.

Phase	No. of flat provision	Designed population	Completion Date
1	-	-	August 2004
2	3 167	8 119	October 2004
3	2 238	6 078	January 2005
4	1 598	5 390	January 2005

Mini-soccer pitch

6. In accordance with existing policy, Government can fund a concrete-paved mini-soccer pitch as a standard provision. If a school sponsor prefers an artificial turf mini-soccer pitch, which is above-standard, it has to bear the additional costs required.

7. We have consulted the school sponsoring bodies for the two schools covered by **239ES** and **284EP**. They are content with a concrete-paved mini-soccer pitch.

School places in the Wong Tai Sin District

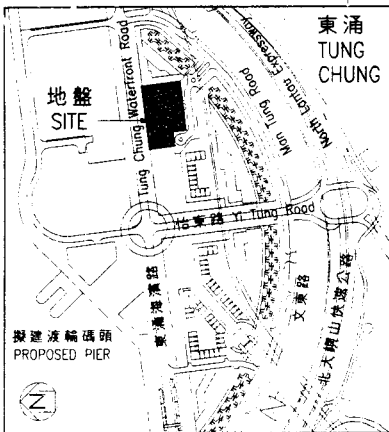
8. We have plans to construct two 30-classroom primary schools at Diamond Hill in the Wong Tai Sin District. We would also meet the shortfall of school places by making use of vacant school premises.

9. A layout plan of the rooftop facilities of **292EP** is at Enclosure 3.

Enclosure 1 to PWSCI(2001-02)33

List of school projects discussed at 17 October 2001 PWSC meeting

Paper no.	Project no.	Project title
PWSC(2001-02)57	241ES	Two secondary schools in To Kwa Wan Reclamation
	242ES	Two secondary schools at Lee On Road, Kwun Tong
PWSC(2001-02)58	232ES	Secondary school in Area 20, Tung Chung
	233ES	Secondary school in Area 40, Tung Chung
	240ES	Second secondary school in Area 40, Tung Chung
	279EP	Primary school in Area 20, Tung Chung
PWSC(2001-02)59	239ES	Secondary school in Area 36, Fanling
	284EP	Primary school in Area 36, Fanling
	293EP	Second primary school in Area 36, Fanling
PWSC(2001-02)60	292EP	A 36-classroom primary school at Sze Mei Street, San Po Kong



位置圖 LOCATION PLAN
SCALE 1:20000

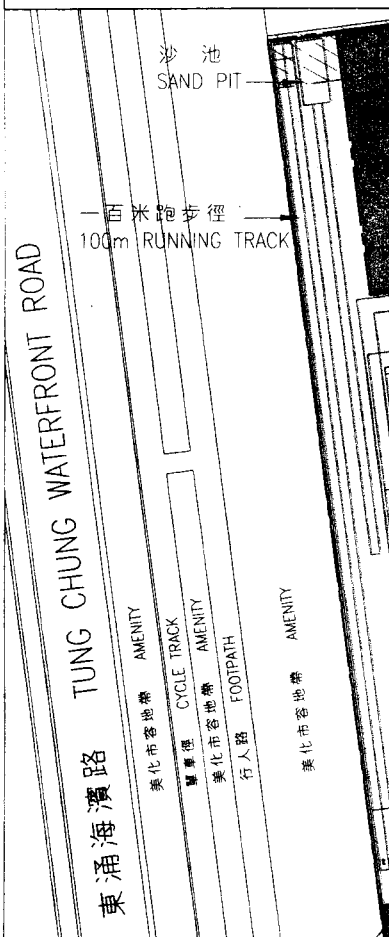
PROVISION OF INSULATED WINDOWS AND AIR-CONDITIONING TO 4 SPECIAL ROOMS ON 2/F AND 3/F AT THE EASTERN FACADE OF THE SPECIAL ROOM BLOCK
在特別室大樓向東面二樓及三樓之四間特別室安裝隔音玻璃窗和空氣調節

PROVISION OF INSULATED WINDOWS AND AIR-CONDITIONING TO 30 CLASSROOMS AND 4 SMALL GROUP TEACHING ROOMS FROM 1/F TO 6/F AT THE SOUTHERN AND NORTHERN FACADES OF THE CLASSROOM BLOCK
在課室大樓向南面及北面由一樓至六樓之三十間課室與四間小組教學室安裝隔音玻璃窗和空氣調節

住宅用地
RESIDENTIAL LAND

七米闊
渠務專用範圍
7m WIDE
DRAINAGE RESERVE

行人出入口
PEDESTRIAN
ENTRANCE



沙池
SAND PIT

一百米跑步徑
100m RUNNING TRACK

小型足球場
籃球動場
MINI-SOCCER PITCH
CUM-SPORTS FIELD

共用設施
SHARED FACILITIES

車輛通道 EVA
VEHICLE ACCESS

停車場
CARPARK

共用設施
SHARED FACILITIES

行人出入口
PEDESTRIAN
ENTRANCE

車輛入口
VEHICLE INGRESS
POINT

PROVISION OF INSULATED WINDOWS AND AIR-CONDITIONING TO 10 SPECIAL ROOMS FROM 1/F TO 6/F AT THE EASTERN, SOUTHERN AND WESTERN FACADES OF THE SPECIAL ROOM BLOCK
在特別室大樓向東面、南面及西面一樓至六樓之十間特別室安裝隔音玻璃窗和空氣調節

PROVISION OF INSULATED WINDOWS AND AIR-CONDITIONING TO 30 CLASSROOMS AND 1 SMALL GROUP TEACHING ROOM FROM 1/F TO 6/F AT THE NORTHERN FACADE OF THE CLASSROOM BLOCK
在課室大樓向北面由一樓至六樓之三十間課室與一間小組教學室安裝隔音玻璃窗和空氣調節

休憩用地
PUBLIC OPEN SPACE

PROVISION OF INSULATED WINDOWS AND AIR-CONDITIONING TO 1 SPECIAL ROOM AND 1 SMALL GROUP TEACHING ROOM ON 1/F AT THE SOUTHERN AND WESTERN FACADES OF THE ASSEMBLY HALL BLOCK
在禮堂大樓向南面及西面一樓之一間課室與一間小組教學室安裝隔音玻璃窗和空氣調節

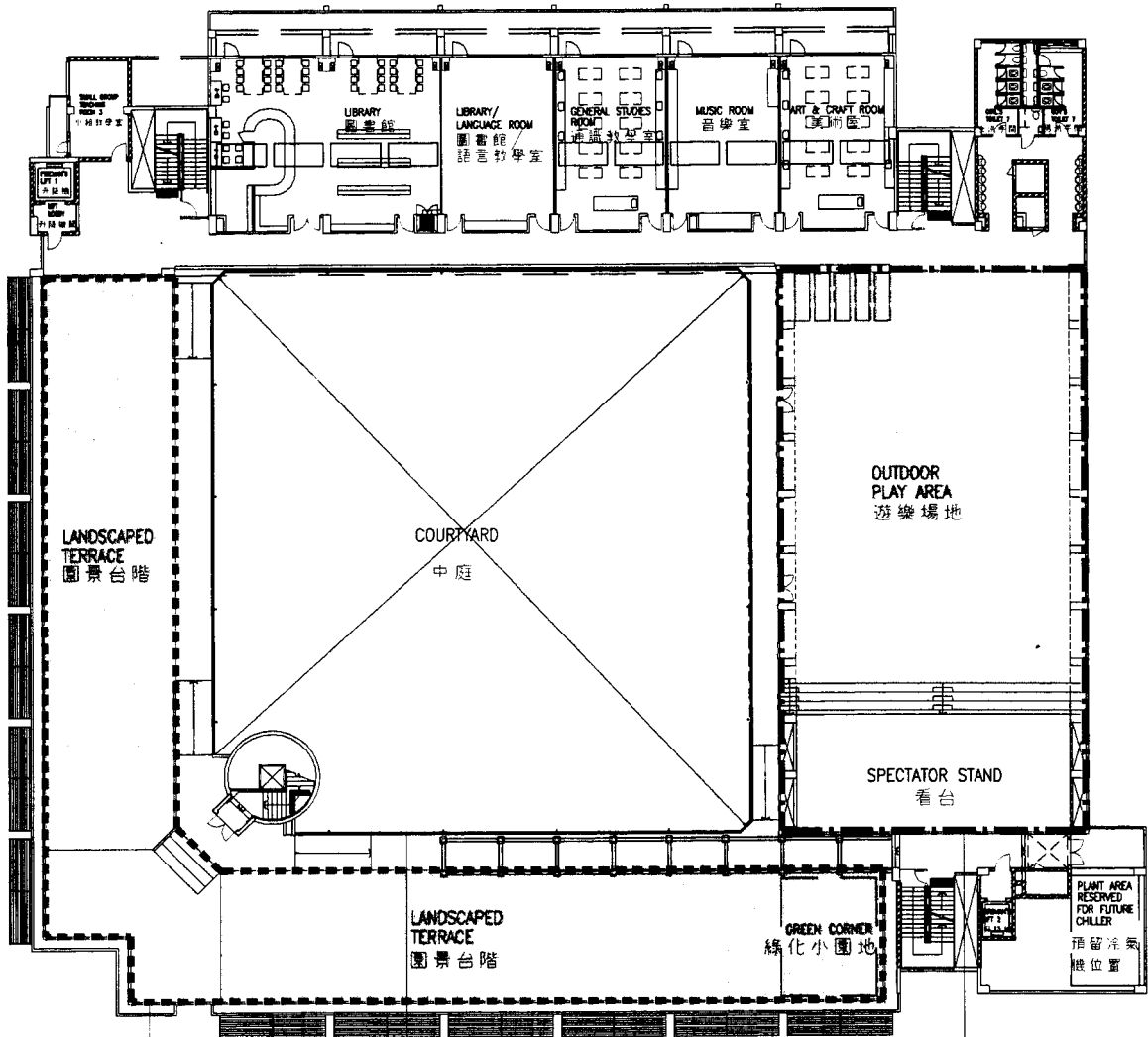
title 232ES & 279EP
東涌第20區擬建
1所中學和1所小學
SECONDARY SCHOOL
& PRIMARY SCHOOL IN
AREA 20, TUNG CHUNG

drawn by Y.L.LAM date 29/10/01
approved SIMON CHAN date 29/10/01
office ARCHITECTURAL BRANCH

drawing no. AB/5807&5813/XA401 scale 1:1000



建築署
ARCHITECTURAL
SERVICES
DEPARTMENT




2.5m HIGH FENCE WALL CONSISTS OF 1.2m HIGH PARAPET WALL & 1.3m HIGH METAL FENCE.

2.5米高外牆
(包括1.2米高的護牆及
1.3米高的金屬欄)

1.2m HIGH BALUSTRADE
1.2米高欄杆

2.5m HIGH METAL FENCE
2.5米高金屬欄

title 292EP 新蒲崗四美街的1所36間課室小學 天台設施平面圖 LAYOUT PLAN OF THE ROOFTOP FACILITIES OF A 36-CLASSROOM PRIMARY SCHOOL AT SZE MEI STREET, SAN PO KONG	drawn by approved	date date	drawing no. AB/6370/XB001	scale 1:500
	KEVIN LI	05/11/01	 ARCHITECTURAL SERVICES DEPARTMENT	
	office ARCHITECTURAL BRANCH			