

NOTE FOR PUBLIC WORKS SUBCOMMITTEE OF FINANCE COMMITTEE

Supplementary information on 11NG - Market and public toilet in Aldrich Bay Reclamation Area

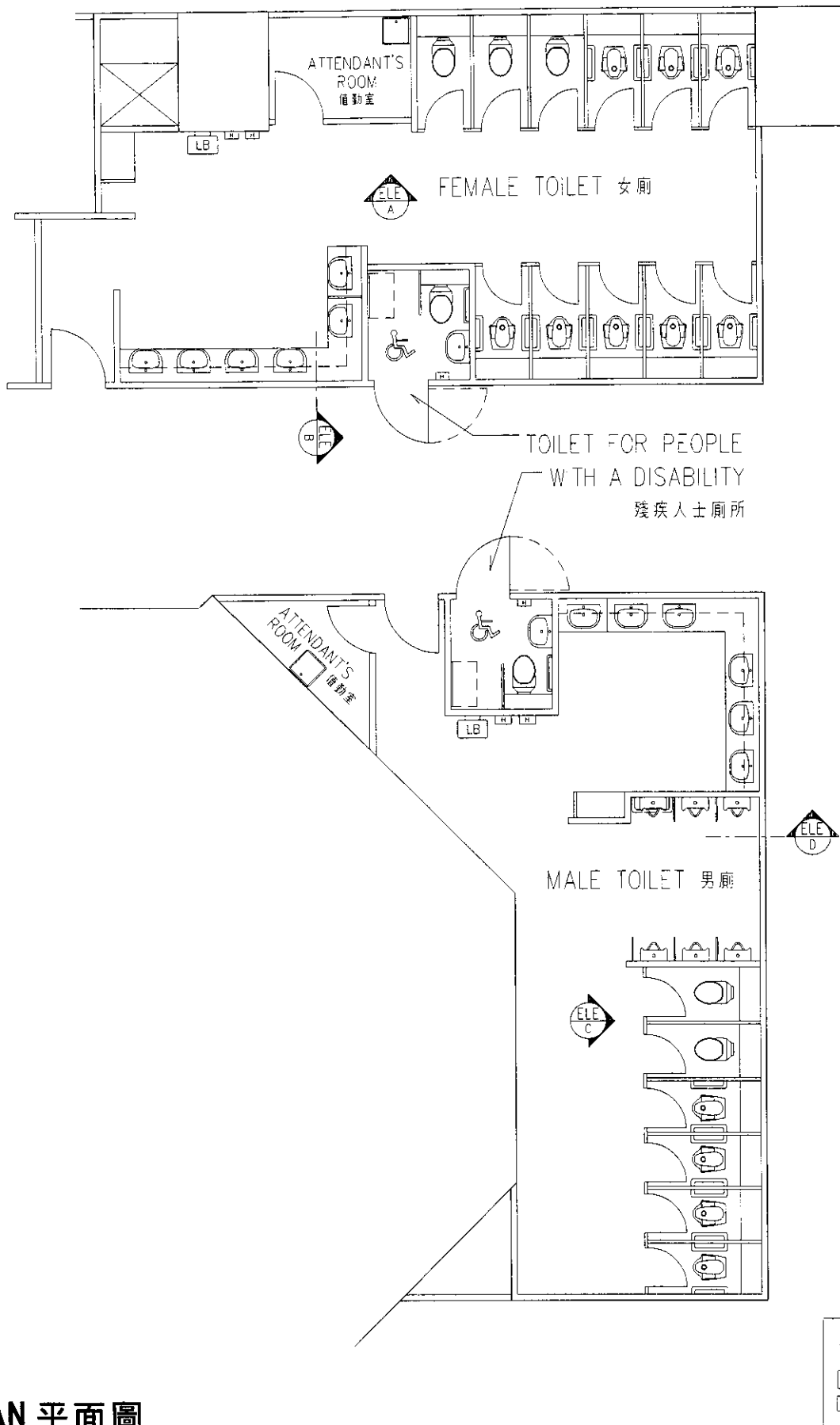
INTRODUCTION

In considering the paper referenced PWSC(2001-02)84 on **11NG** at the Public Works Subcommittee meeting on 28 November 2001, Members requested for additional information on the layout and design of the public toilet.

THE ADMINISTRATION'S RESPONSE


2. The layout and design plans of the proposed public toilet are at Enclosure 1 (4 pages). A list setting out the details of the facilities of the toilet is at Enclosure 2.

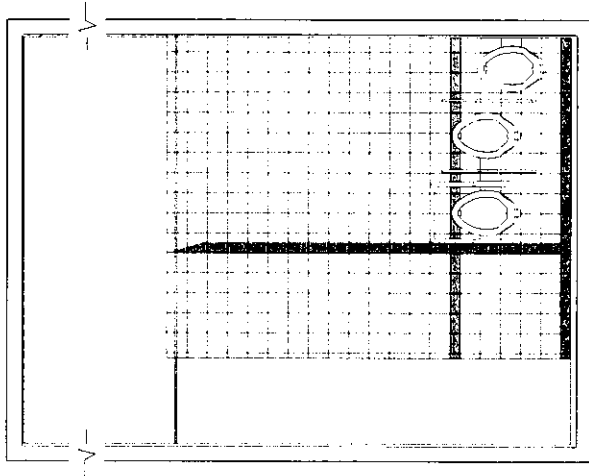
Environment and Food Bureau
December 2001



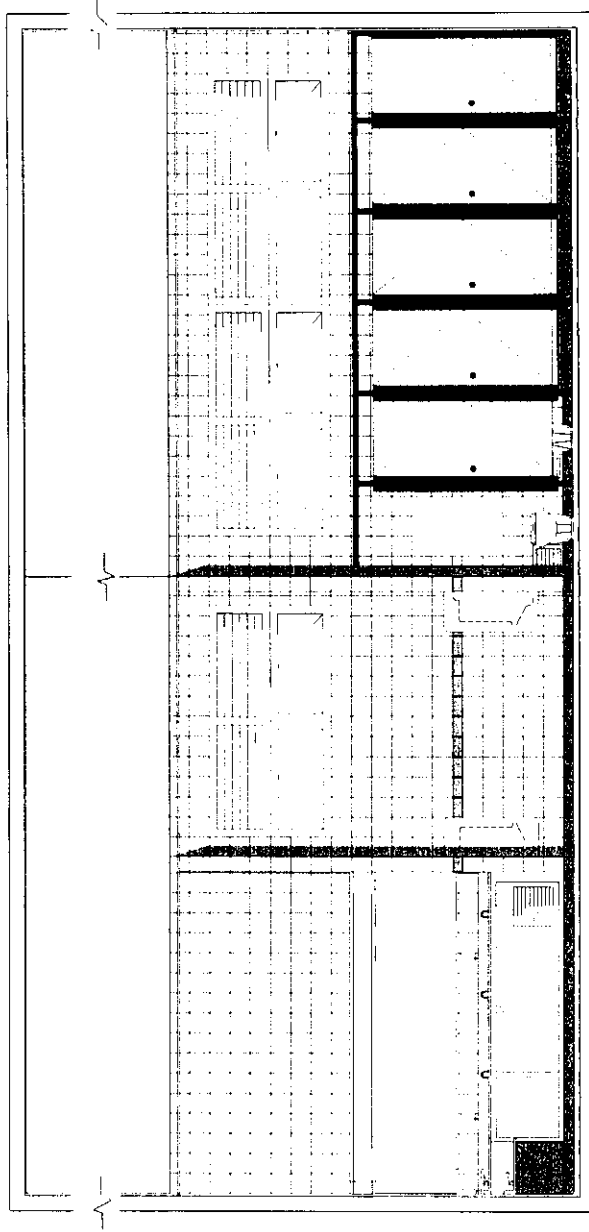
LEGEND	
LB	LITTER BIN 垃圾箱
H	HAND DRYER 乾手機

LAYOUT PLAN 平面圖

title 3011NG 愛秩序灣填海區街市 及公廁 MARKET AND PUBLIC TOILET IN ALDRICH BAY RECLAMATION AREA	drawn by T. TO	date 14-12-2001	drawing no. AB/5668/SK/003	scale 1:100
	approved D. LU	date 14-12-2001	 建築署 ARCHITECTURAL SERVICES DEPARTMENT	
office DEVELOPMENT & CONSTRUCTION BRANCH, HOUSING DEPARTMENT				



ELEVATION D 立面圖 D




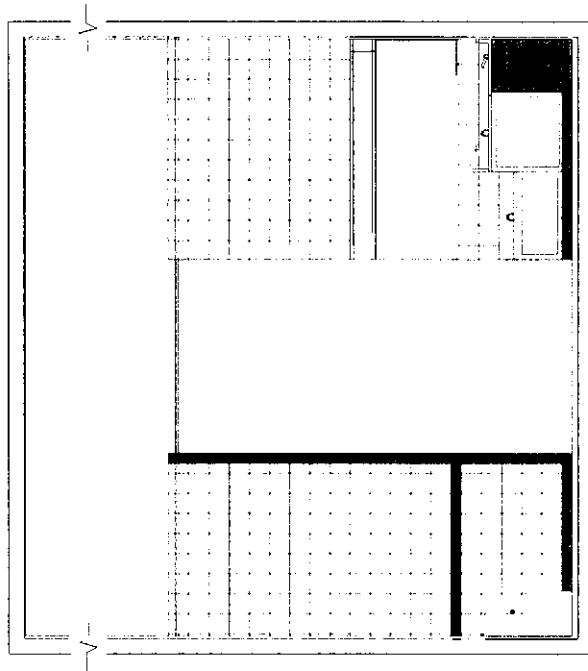
ELEVATION C

立面圖 C

MALE TOILET - ELEVATIONS

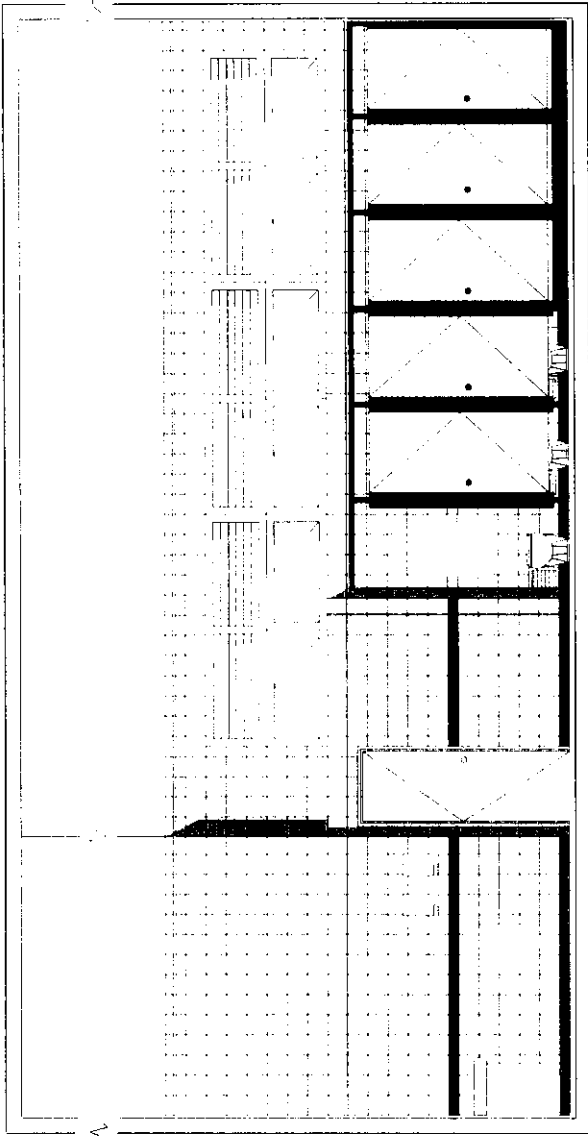
男廁 - 立面圖

title 3011NG 愛 株 序 灣 填 海 區 街 市 及 公 廁 MARKET AND PUBLIC TOILET IN ALDRICH BAY RECLAMATION AREA	drawn by T. TO	date 14-12-2001	drawing no. AB/5668/SK/005	scale 1:75
	approved D. LU	date 14-12-2001	 建 築 署 ARCHITECTURAL SERVICES DEPARTMENT	
office DEVELOPMENT & CONSTRUCTION BRANCH, HOUSING DEPARTMENT				



ELEVATION B

立面圖 B




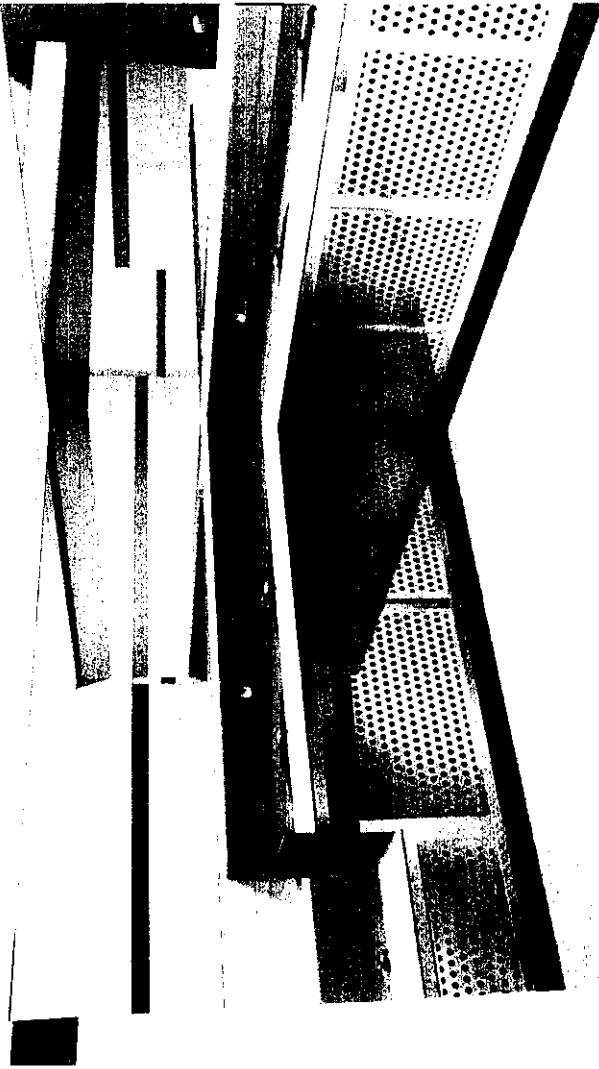
ELEVATION A

立面圖 A

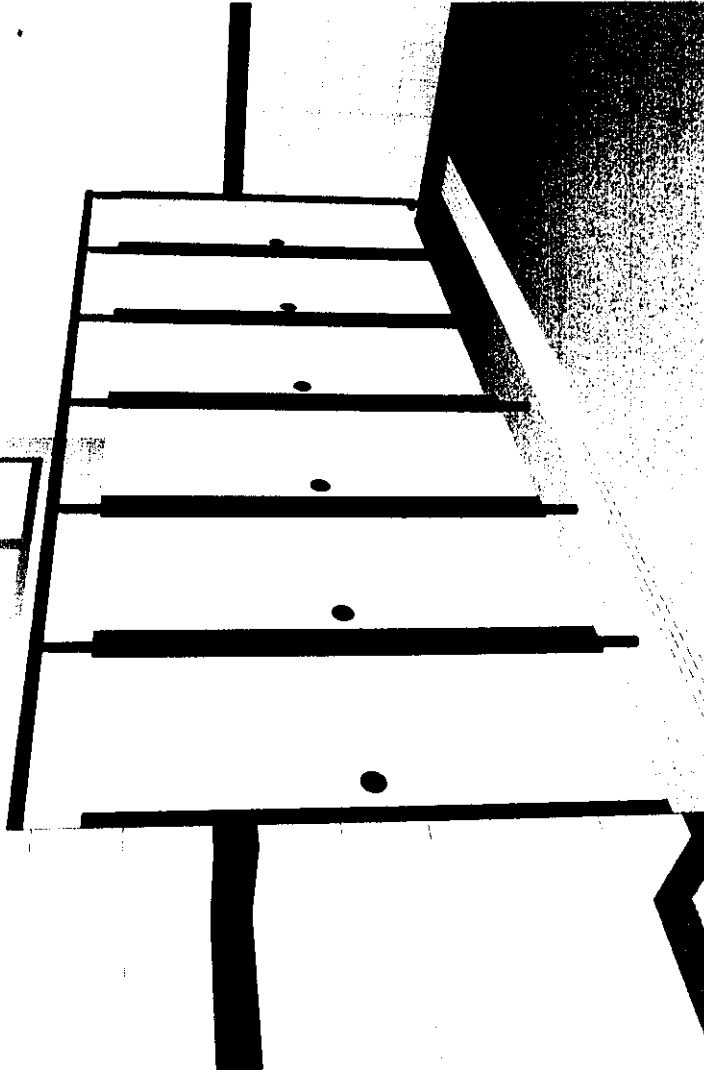
FEMALE TOILET - ELEVATIONS

女廁 - 立面圖

title 3011NG 愛 秩 序 灣 填 海 區 街 市 及 公 廁 MARKET AND PUBLIC TOILET IN ALDRICH BAY RECLAMATION AREA	drawn by T. TO	date 14-12-2001	drawing no. AB/5668/SK/004	scale 1:75
	approved D. LU	date 14-12-2001	 建 築 署 ARCHITECTURAL SERVICES DEPARTMENT	
office DEVELOPMENT & CONSTRUCTION BRANCH, HOUSING DEPARTMENT				




MALE TOILET 男廁



FEMALE TOILET 女廁

INTERIOR PERSPECTIVES 透視圖

title 30111NG 愛 秩 序 灣 填 海 區 街 市 及 公 廁 MARKET AND PUBLIC TOILET IN ALDRICH BAY RECLAMATION AREA	drawn by T. TO	date 14-12-2001	drawing no. AB/5668/SK/006	scale
	approved D. LU	date 14-12-2001	 建 築 署 ARCHITECTURAL SERVICES DEPARTMENT	
	office DEVELOPMENT & CONSTRUCTION BRANCH, HOUSING DEPARTMENT			

11NG - Market and public toilet in Aldrich Bay Reclamation Area

Public Toilet Facilities¹

- (a) Toilet facilities -
 - (i) A male toilet with six water closet cubicles (four squatting type and two pedestal pans) and six urinal bowls (five for adults and one for children) with modesty boards.
 - (ii) A female toilet with 11 water closet cubicles (eight squatting type and three pedestal pans).
 - (iii) Two toilets for people with physical disabilities.
- (b) Facilities common to both the male and female toilets -
 - (i) High level louvres and windows with aluminium frames and translucent glass for natural lighting and ventilation.
 - (ii) Electric fans for air circulation.
 - (iii) Concealed type blower fans underneath wash-hand basins.
 - (iv) Odour source oriented air exhaust fan inside each water closet compartment.
 - (v) Automatic air-refreshener.
 - (vi) Flushing valve system
 - (vii) Wash-hand basins with automatic sensor taps on corian counter top. A wash-hand basin will be installed at lower level in both the male and female toilets for children's use.
 - (viii) Full length mirrors, soap dispensers, electric hand-dryers, baby-changing counters and litter bins.

¹ The toilets will be serviced by attendants from 7:30am to 9:30pm.

- (ix) A stainless steel grated surface drain will be provided under the urinal bowls. One of the urinal bowls will be provided with hand-grip railing for use by people with physical disabilities, the elderly, etc.
- (x) Toilet paper dispenser, hand-grip rails, small rack for handbags and coat hook inside each water closet cubicle.
- (xi) Signage, composite information signage (with hotline telephone number) and inspection record box.