

For information

**Legislative Council**  
**Panel on Environmental Affairs**

**Information Note on the Progress of**  
**Tolo Harbour Sewerage of Unsewered Areas Stages 1 and 2 Works**

**PURPOSE**

In discussing the proposal to upgrade part of Public Works Programme item **125DS**, namely “Tolo Harbour sewerage of unsewered areas”, to Category A for implementing the stage 1 phases 1D and 2B works at the meeting of the Public Works Subcommittee on 4 April 2001, Members requested the Administration to report to the Legislative Council Panel on Environmental Affairs, before the end of 2001, the progress of works under **125DS**, in particular the stage 2 works.

2. This paper sets out information on the latest progress of the works under **125DS**.

**BACKGROUND**

3. **125DS** was included in the Public Works Programme in August 1990 for implementing long-term water pollution abatement works at the unsewered areas in the Tolo Harbour Catchment. The implementation plan of **125DS** is summarized in **Enclosure 1**.

4. The project was implemented in two stages as follows :

- (a) stage 1 works, covering 85 unsewered areas in Tai Po and Sha Tin, was divided into two phases which were further subdivided into sub-phases (phases 1A, 1B, 1C, 1D, 2A, 2B and 2C) of more manageable sizes to facilitate construction and the land resumption process. Location plans showing the unsewered areas covered by the stage 1 phase 1 and phase 2 works are at **Enclosures 2 and 3** respectively; and

- (b) stage 2 works covers unsewered areas which are located in relatively remote locations. The scope and the implementation programme of the stage 2 works are being reviewed as part of the North District and Tolo Harbour Sewerage Master Plans Review (the Review) study commissioned by the Environmental Protection Department (EPD).

## **PRESENT PROGRESS**

### **Stage 1 phase 1 works**

5. The stage 1 phases 1A, 1B, and 1C works was substantially completed in May 1995, August 1998, and February 1999 respectively.
6. The stage 1 phase 1D works, which was upgraded to Category A as part of **328DS** “Tolo Harbour sewerage of unsewered areas, stage 1 phases 1D and 2B” in May 2001, will commence in January 2002 for completion in end 2003.

### **Stage 1 phase 2 works**

7. The stage 1 phase 2A works was substantially completed in May 2001.
8. Tenders for the stage 1 phase 2B works, which was upgraded to Category A as part of **328DS** “Tolo Harbour sewerage of unsewered areas, stage 1 phases 1D and 2B” in May 2001, will be invited in late December 2001. Works are expected to start in March 2002 for completion in mid-2004.
9. Detailed design for the phase 2C works is in progress. Drainage Services Department (DSD) had consulted the relevant committees of the Sha Tin and Tai Po District Councils in March 2001 and obtained their support for the proposed works. Since land resumption is required for implementing the works, we will need to go through statutory gazettement procedures under the Water Pollution Control (Sewerage) Regulations before finalising the detailed design. DSD plans to start the works in December 2003 for completion in end 2006.

## Stage 2 works

10. As reported in paragraph 4(b) above, the provision of sewerage to unsewered areas under the stage 2 works is being reviewed by EPD having taken into account the latest developments within the catchment and in the light of experience gained in implementing village sewerage schemes under the stage 1 works.

11. Based on the latest findings of the Review, the stage 2 works will cover some 63 relatively remote unsewered areas. The works is tentatively scheduled for completion in phases from 2007 to 2009. A more detailed implementation programme will be drawn up upon the finalization of the scope of the stage 2 works in early 2002. A location plan showing the proposed unsewered areas covered by the stage 2 works is at **Enclosure 4**.

12. Part of the stage 2 works may need to go through statutory procedures under the Environmental Impact Assessment Ordinance (EIAO)<sup>1</sup> and land resumption procedures<sup>2</sup>. In order to achieve early commissioning of the proposed sewerage works, we intend to expedite stage 2 works by packaging the works as follows -

- Group A: Non-designated project under EIAO and requires no land resumption
- Group B: Designated project under EIAO and requires no land resumption
- Group C: Designated project under EIAO and requires land resumption

Since works under Group A does not need to go through EIAO procedures and statutory land resumption procedures, they can be completed as early as 2007. This will be followed by works under Groups B and C.

---

<sup>1</sup> Works projects which fall within the definition of “designated projects” under Schedule 2 and 3 of the EIAO would require an Environmental Permit before work commences. A public consultation process will be required before the Environmental Permit is approved by EPD.

<sup>2</sup> Sewerage works which requires land resumption would need to be gazetted under the Water Pollution Control (Sewerage) Regulations. Under the existing Regulations, 60 days are allowed for affected parties to raise objections after the project is gazetted. A maximum of nine months are allowed for the resolution of objections, if any.

13. For works under Group C, members of the public could raise objections to land resumption and road closures arising from the works. The resolution of such objections can be very time-consuming and may delay completion of the works. In this regard, we will attempt to secure the commitment of Heung Yee Kuk, Shatin and Tai Po District Councils to gain their full support; and cooperation from Rural Committees and Village Representatives (by involving the affected villagers early on the development of options and sewer alignments) before gazetting the works under the Water Pollution Control (Sewerage) Regulations. We could save up to nine months for works under Group C if no statutory objection is lodged under the Regulations.

**Environment and Food Bureau  
Environmental Protection Department  
Drainage Services Department  
December 2001**

**Enclosure 1**

**Tolo Harbour Sewerage of Unsewered Areas - Updated Implementation Plan**

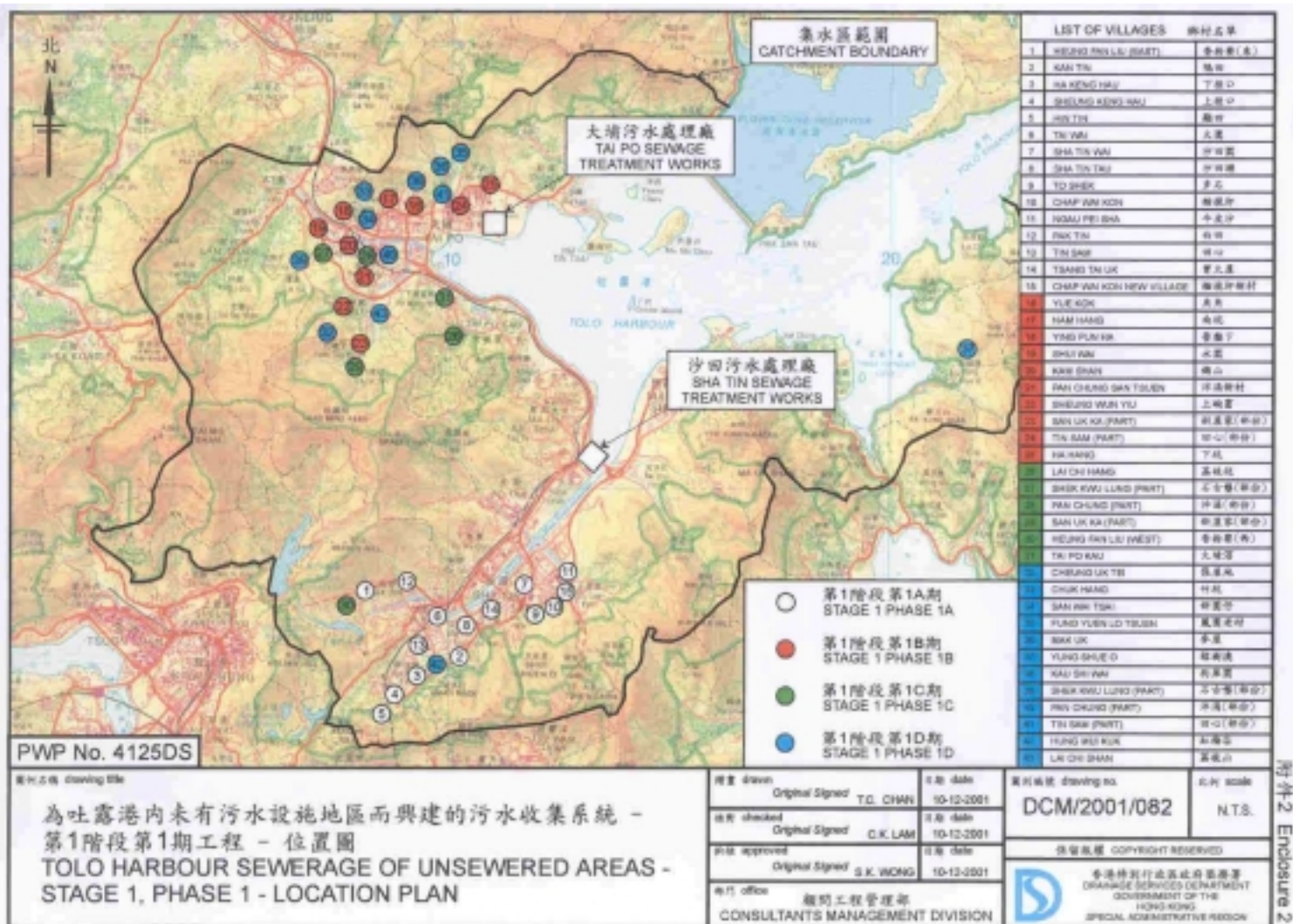
PWP Item No.	Description	No. of unsewered areas	Start Date	Completion Date	Updated Cost Estimate (\$million in Sept 2001 prices)	Estimated Population Served
<b>Stage 1 Phase 1 (covering 43 unsewered areas)</b>						
137DS/A	Design Consultancy	--	Aug 1991	Jun 2001	12.5	--
163DS/A	Stage 1 Phase 1A	15	Jun 1993	May 1995	56.8	17,300
177DS/A	Stage 1 Phase 1B	10	Oct 1994	Aug 1998	72.4	8,200
284DS/A	Stage 1 Phase 1C	6	Jun 1997	Feb 1999	28.6	4,800
328DS/A	Stage 1 Phase 1D	12	Jan 2002	Oct 2003	41.6	3,400
Sub-total					211.9	33,700
<b>Stage 1 Phase 2 (covering 42 unsewered areas)</b>						
179DS/A	Design Consultancy	--	May 1995	Dec 2003	11.6	--
213DS/A	Stage 1 Phase 2A	15	Mar 1998	May 2001	83.2	11,800
328DS/A	Stage 1 Phase 2B	15	Mar 2002	Mar 2004	110.3	12,100
#125DS/B	Stage 1 Phase 2C	12	Dec 2003	Dec 2006	101.5	19,200
Sub-total					306.6	43,100
Total					518.5	76,800
<b>Stage 2 (covering 63 unsewered areas)</b>						
#125DS/B	Design	--	*2002	*2006	*30	--

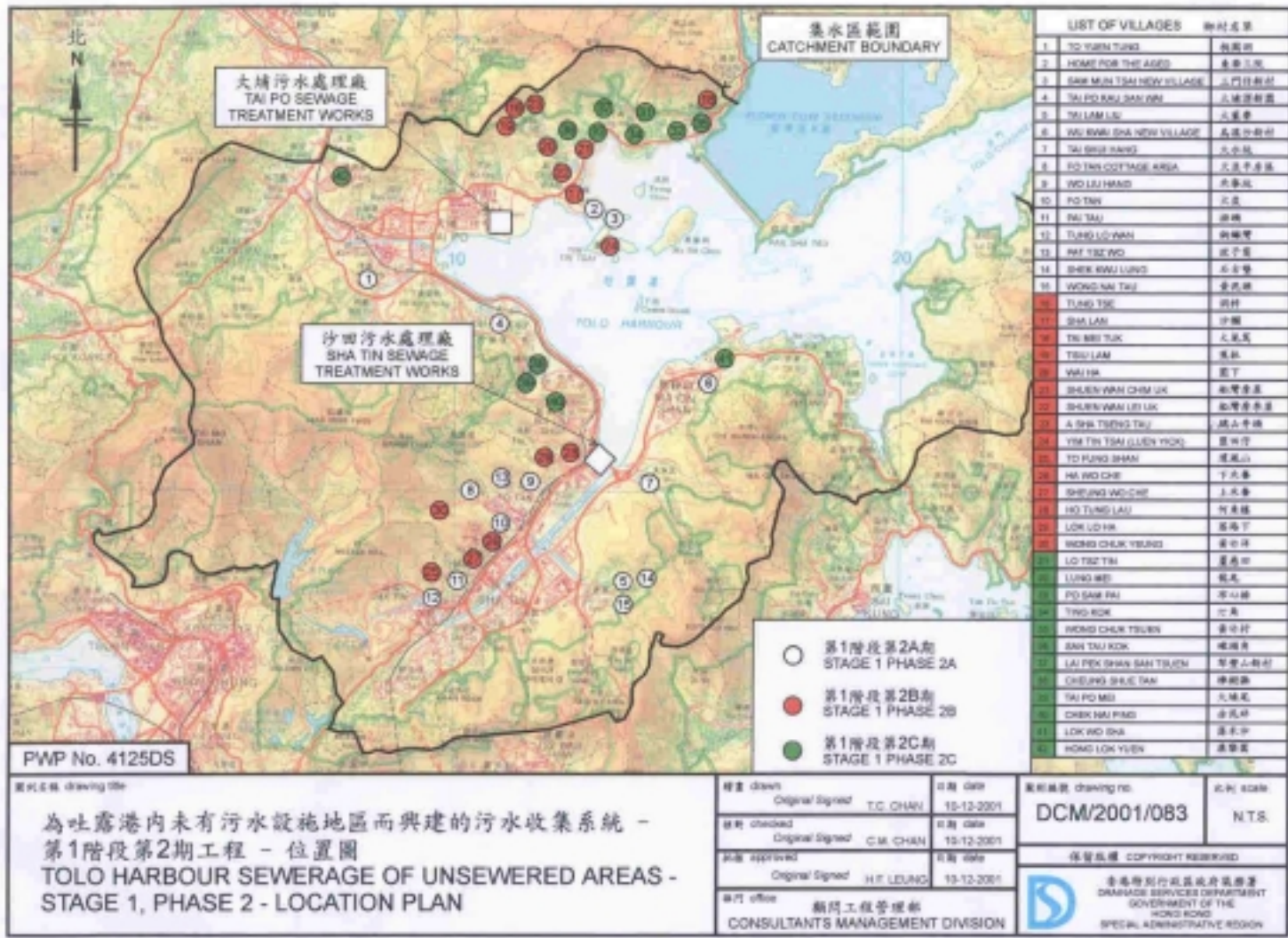
PWP Item No.	Description	No. of unsewered areas	Start Date	Completion Date	Updated Cost Estimate (\$million in Sept 2001 prices)	Estimated Population Served
	Consultancy					
#125DS/B	Construction	*63	--	*2007-2009	*550	*18,000
Total					*580	*18,000

Note

# The remainder of 125DS for retention in Category B.

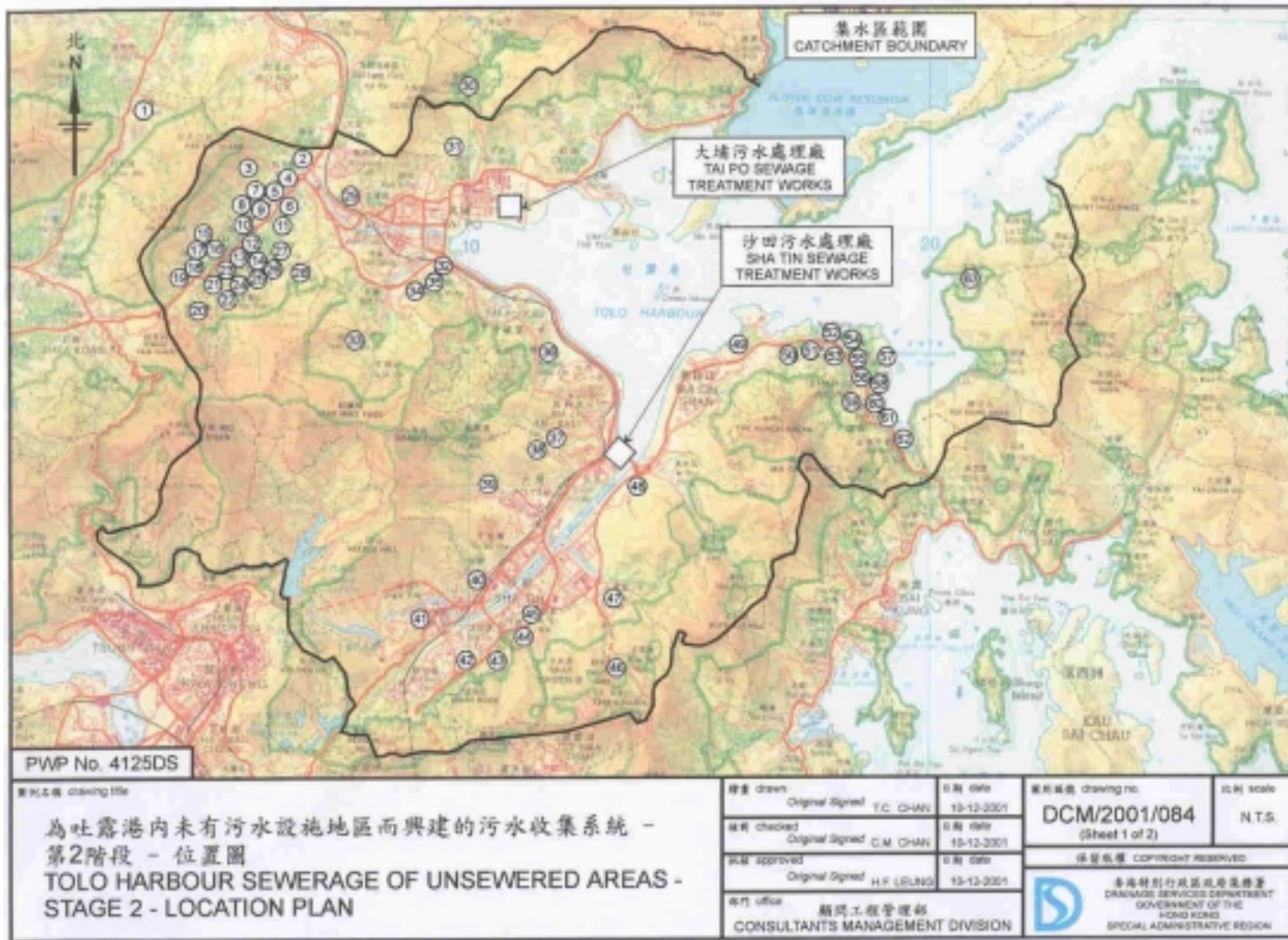
\* These are rough estimates at the moment and will be subject to refinement when we have substantially finalized the updated scope and programme of the stage 2 works in early 2002.





附件 3 Enclosure 3






附件4 (第一頁) Enclosure 4 (Sheet 1)

1 YING PUN	營盤	22 WO LIU	禾寮	43 SHA TIN TAU NEW VILLAGE	沙田嶺新村
2 WAI TAU TSUEN	圍頭村	23 PING LONG	坪崗	44 TSOK POK HANG	作壘坑
3 NGAU KWU LENG	牛牯籠	24 TAI OM	大窰	45 FUI YIU HA	灰窰下
4 KAU LIU HA	較寮下	25 LUNG A PAI	龍丫排	46 TSO TUI HA	草堆下
5 HANG HA PO	坑下莆	26 KO TIN HOM	高田壩	47 SIU LEK YUEN	小瀝源
6 SAN UK PAI	新屋排	27 TIN LIU HA	田寮下	48 SHA TIN FISHERMAN'S NEW VILLAGE	沙田漁民新村
7 FONG MA PO	放馬莆	28 LIN AU	蓮澳	49 CHEUNG KANG	長庚
8 SAN UK TSAI	新屋仔	29 TAI PO TAU	大塘頭	50 CHEUNG MUK TAU	樟木頭
9 CHUNG UK TSUEN	鍾屋村	30 SHA LO TUNG CHEUNG UK	沙羅洞張屋	51 SAI O	西澳
10 TONG MIN TSUEN	塘面村	31 FUNG YUEN	鳳園	52 NAI CHUNG	泥涌
11 SHE SHAN TSUEN	社山村	32 CARE VILLAGE	美援新村	53 KWUN HANG	官坑
12 LAM TSUEN SAN TSUEN	林村新村	33 YUEN TUN HA	元墩下	54 CHE HA	峯下
13 SAN TONG	新塘	34 SHAN TONG NEW VILLAGE	山塘新村	55 MA KWU LAM	馬牯欄
14 PAK TIN KONG	白田崗	35 HA WONG YI AU	下黃宜凹	56 TAI TUNG	大洞
15 TAI MONG CHE	大芒峯	36 WONG HAI FAI	黃坭塊	57 TSENG TAU	井頭
16 MA PO MEI	麻布尾	37 KAU TO	九肚	58 NGA YIU TAU	瓦窩頭
17 SHUI WO	水窩	38 MA NIU	馬屎	59 TAI TUNG WO LIU	大洞水寮
18 PAK NGAU SHEK HA TSUEN	白牛石下村	39 KWAI TEI NEW VILLAGE	桂地新村	60 SAI KENG	西徑
19 PAK NGAU SHEK SHEUNG TSUEN	白牛石上村	40 TIN LIU LAI CHI YUEN	田寮荔枝園	61 KEI LING HA SAN WAI	企嶺下新圍
20 NG TUNG CHAI	梧桐寨	41 TAI WAI NEW VILLAGE	大圍新村	62 KEI LING HA LO WAI	企嶺下老圍
21 CHAI KEK	寨西	42 KAK TIN VILLAGE NAM KAU	隔田村南落	63 SHAM CHUNG	深涌

圖則名稱 drawing title

為吐露港內未有污水設施地區而興建的污水收集系統 -  
第2階段 - 鄉村名稱列表  
TOLO HARBOUR SEWERAGE OF UNSEWERED AREAS -  
STAGE 2 - LIST OF VILLAGES

繪圖 drawn	Original Signed	T.C. CHAN	日期 date	10-12-2001
校對 checked	Original Signed	C.M. CHAN	日期 date	10-12-2001
核實 approved	Original Signed	H.F. LEUNG	日期 date	10-12-2001
部門 office	顧問工程管理部 CONSULTANTS MANAGEMENT DIVISION			

圖則編號 drawing no.	比例 scale
DCM/2001/085 (Sheet 2 of 2)	N.T.S.
保留版權 COPYRIGHT RESERVED	
 香港特別行政區政府渠務署 DRAINAGE SERVICE DEPARTMENT GOVERNMENT OF THE HONG KONG SPECIAL ADMINISTRATIVE REGION	

附件4(第二頁) Enclosure 4 (Sheet 2)