

Index on statistical information with and without foreign domestic helpers (FDH)

(a) Panel paper

	<u>With FDH</u>		<u>Without FDH</u>
Annex I	Key Labour and Manpower Statistics	Annex I*	Key Labour and Manpower Statistics (Excluding Foreign Domestic Helpers)
Annex II	Population by Educational Attainment (Highest Level Attended) and Economic Activity Status, 1991, 1996 and 2001	Annex II*	Population by Educational Attainment (Highest Level Attended) and Economic Activity Status, 1991, 1996 and 2001 (Excluding Foreign Domestic Helpers)
Annex III	Working Population by Occupation and Sex, 1991, 1996 and 2001	Annex III*	Working Population by Occupation and Sex, 1991, 1996 and 2001 (Excluding Foreign Domestic Helpers)
Annex IV	Working Population by Industry and Sex, 1991, 1996 and 2001	Annex IV*	Working Population by Industry and Sex, 1991, 1996 and 2001 (Excluding Foreign Domestic Helpers)
Annex V	Monthly Income from Main Employment of Working Population by Occupation and Sex, 1991, 1996 and 2001	Annex V*	Monthly Income from Main Employment of Working Population by Occupation and Sex, 1991, 1996 and 2001 (Excluding Foreign Domestic Helpers)

(b) PowerPoint presentation

Slide

1	Briefing on the Summary Results of the 2001 Population Census Related to Labour and Manpower Matters	-
2	Dissemination of Population Census Results	-
3	Dissemination of Population	-

Census Results			
4	Size and Growth of Labour Force	4*	Size and Growth of Labour Force (Excluding Foreign Domestic Helpers)
5	Labour Force	5*	Labour Force (Excluding Foreign Domestic Helpers)
6	Labour Force Participation Rate	6*	(Same as 6)
7	Labour Force Participation Rates of Males by Age Group	7*	Labour Force Participation Rates of Males by Age Group (Excluding Foreign Domestic Helpers)
8	Labour Force Participation Rates of Females by Age Group	8*	Labour Force Participation Rates of Females by Age Group (Excluding Foreign Domestic Helpers)
9	Labour Force Participation Rates of Married and Never-married Females	9*	Labour Force Participation Rates of Married and Never-married Females (Excluding Foreign Domestic Helpers)
10	Proportion of Working Population By Educational Attainment	10*	Proportion of Working Population By Educational Attainment (Excluding Foreign Domestic Helpers)
11	Working Population by Educational Attainment and Economic Activity Status, 2001	11*	Working Population by Educational Attainment and Economic Activity Status, 2001 (Excluding Foreign Domestic Helpers)
12	Working Population by Occupation	12*	Working Population by Occupation (Excluding Foreign Domestic Helpers)
13	Working Population by Industry	13*	Working Population by Industry (Excluding Foreign Domestic Helpers)
14	Median Monthly Income from Main Employment of Working Population	14*	Median Monthly Income from Main Employment of Working Population (Excluding Foreign Domestic Helpers)
15	Median Monthly Income from Main Employment of Working Population by Sex and Age Group, 2001	15*	Median Monthly Income from Main Employment of Working Population by Sex and Age Group, 2001 (Excluding Foreign Domestic Helpers)
16	Median Monthly Income from Main Employment of Working Population by Occupation	16*	Median Monthly Income from Main Employment of Working Population by Occupation (Excluding Foreign Domestic Helpers)
17	Thank you		-

Key Labour and Manpower Statistics
(Excluding Foreign Domestic Helpers)

	1991	1996	2001
I. Labour force			
Male	1 741 111	1 922 446	1 946 666
Female	1 014 879	1 141 878	1 310 011
Total	2 755 990	3 064 324	3 256 677
II. Median age of labour force	34	36	38
III. Sex ratio of labour force (males per 1 000 females)	1 716	1 684	1 486
IV. Labour force participation rate (%)			
Male			
Married	81.0	78.7	74.5
Never married	74.8	72.5	66.7
Overall	78.7	76.6	71.9
Female			
Married	40.4	39.9	42.0
Never married	68.1	65.0	64.1
Overall	48.2	46.8	48.4
Both sexes			
Married	60.0	58.7	57.7
Never married	72.0	69.2	65.5
Overall	63.9	61.9	60.1
V. Working Population			
(i) Working population	2 660 091	2 925 525	3 071 391
(ii) Proportion of working population engaged in			
Managers and administrators	9.4%	12.6%	11.4%
Professionals	3.7%	5.2%	5.9%
Associate professionals	10.5%	12.6%	16.2%
Clerks	16.2%	17.5%	17.3%
Service workers and shop sales workers	13.5%	14.3%	15.9%
Craft and related workers	15.0%	12.8%	10.5%
Plant and machine operators and assemblers	13.8%	8.9%	7.8%
Elementary occupations	16.9%	15.3%	14.8%
Skilled agricultural and fishery workers; and occupations not classifiable	1.1%	0.8%	0.3%
(iii) Proportion of working population engaged in			
Wholesale, retail and import/export trades, restaurants and hotels industry	23.0%	25.9%	27.8%
Community, social and personal services industry	18.2%	19.2%	21.1%
Financing, insurance, real estate and business services industry	10.8%	14.0%	17.0%
(iv) Median monthly income from main employment (HK\$)			
Male	6,000	10,000	12,000
Female	4,415	8,500	10,000
Both sexes	5,170	9,800	11,000

**Working Population by Educational Attainment (Highest Level Attended)
and Economic Activity Status, 1991, 1996 and 2001
(Excluding Foreign Domestic Helpers)**

Year and Educational Attainment	Self-employed		Employers		Employees ⁽¹⁾		Unpaid family workers		Total	
	Number	%	Number	%	Number	%	Number	%	Number	%
1991										
No schooling/Kindergarten	15 128	10.4	4 871	3.2	125 719	5.4	5 822	17.4	151 540	5.7
Primary	45 665	31.4	31 490	20.6	531 084	22.8	10 796	32.2	619 035	23.3
Lower secondary	31 680	21.8	31 684	20.8	498 875	21.4	6 676	19.9	568 915	21.4
Upper secondary	31 613	21.8	46 174	30.3	720 991	31.0	7 338	21.9	806 116	30.3
Matriculation ⁽²⁾	5 753	4.0	9 252	6.1	130 100	5.6	985	2.9	146 090	5.5
Tertiary : Non-degree course	5 277	3.6	8 462	5.5	162 753	7.0	966	2.9	177 458	6.7
Degree course	10 208	7.0	20 640	13.5	159 152	6.8	937	2.8	190 937	7.2
Total	145 324	100.0	152 573	100.0	2 328 674	100.0	33 520	100.0	2 660 091	100.0
1996										
No schooling/Kindergarten	8 721	6.8	3 587	1.8	70 498	2.7	3 549	13.0	86 355	3.0
Primary	35 672	28.0	34 337	16.8	460 640	17.9	7 870	28.9	538 519	18.4
Lower secondary	31 241	24.5	41 628	20.4	530 961	20.7	5 930	21.8	609 760	20.8
Upper secondary	29 061	22.8	62 104	30.4	841 580	32.8	6 538	24.0	939 283	32.1
Matriculation ⁽²⁾	6 340	5.0	15 806	7.7	168 984	6.6	1 189	4.4	192 319	6.6
Tertiary : Non-degree course	4 089	3.2	10 830	5.3	165 026	6.4	834	3.1	180 779	6.2
Degree course	12 337	9.7	36 122	17.7	328 727	12.8	1 324	4.9	378 510	12.9
Total	127 461	100.0	204 414	100.0	2 566 416	100.0	27 234	100.0	2 925 525	100.0
2001										
No schooling/Kindergarten	4 745	3.5	3 635	1.7	52 537	1.9	2 245	9.5	63 162	2.1
Primary	30 919	23.0	31 947	15.0	407 736	15.1	5 946	25.2	476 548	15.5
Lower secondary	35 004	26.0	45 411	21.3	536 577	19.9	5 311	22.5	622 303	20.3
Upper secondary	34 796	25.9	63 743	29.9	842 456	31.2	6 228	26.4	947 223	30.8
Matriculation ⁽²⁾	10 067	7.5	21 919	10.3	259 678	9.6	1 682	7.1	293 346	9.6
Tertiary : Non-degree course	4 247	3.2	9 025	4.2	142 506	5.3	595	2.5	156 373	5.1
Degree course	14 785	11.0	37 620	17.6	458 439	17.0	1 592	6.7	512 436	16.7
Total	134 563	100.0	213 300	100.0	2 699 929	100.0	23 599	100.0	3 071 391	100.0

Notes : (1) Figures include outworkers and student workers.

(2) The figures include the equivalent educational attainment (highest level attended) of "Technician level (other further non-advance education)" in the 1996 Population By-census and "Diploma/certificate courses in Institute of Vocational Education / former polytechnics" in the 2001 Population Census. However, the similar group "Diploma/certificate courses in technical institutes / polytechnics" was included under "Tertiary: Non-degree course" in the 1991 Population Census.

Working Population by Occupation and Sex, 1991, 1996 and 2001
(Excluding Foreign Domestic Helpers)

Year and Occupation	Male		Female		Both Sexes	
	Number	%	Number	%	Number	%
1991						
Managers and administrators	198 857	11.8	50 390	5.2	249 247	9.4
Professionals	68 516	4.1	30 815	3.2	99 331	3.7
Associate professionals	164 121	9.7	115 788	11.9	279 909	10.5
Clerks	135 665	8.1	295 986	30.4	431 651	16.2
Service workers and shop sales workers	230 823	13.7	128 496	13.2	359 319	13.5
Craft and related workers	352 264	20.9	45 728	4.7	397 992	15.0
Plant and machine operators and assemblers	234 929	13.9	130 897	13.4	365 826	13.8
Elementary occupations	279 274	16.6	169 546	17.4	448 820	16.9
Skilled agricultural and fishery workers; and occupations not classifiable	20 757	1.2	7 239	0.7	27 996	1.1
Total	1 685 206	100.0	974 885	100.0	2 660 091	100.0
1996						
Managers and administrators	282 969	15.5	86 354	7.9	369 323	12.6
Professionals	100 130	5.5	51 461	4.7	151 591	5.2
Associate professionals	201 405	11.0	167 727	15.3	369 132	12.6
Clerks	155 547	8.5	357 172	32.6	512 719	17.5
Service workers and shop sales workers	256 125	14.0	163 596	14.9	419 721	14.3
Craft and related workers	328 086	17.9	45 057	4.1	373 143	12.8
Plant and machine operators and assemblers	211 748	11.6	48 161	4.4	259 909	8.9
Elementary occupations	277 465	15.2	169 044	15.4	446 509	15.3
Skilled agricultural and fishery workers; and occupations not classifiable	17 181	0.9	6 297	0.6	23 478	0.8
Total	1 830 656	100.0	1 094 869	100.0	2 925 525	100.0
2001						
Managers and administrators	257 023	14.1	92 614	7.4	349 637	11.4
Professionals	114 340	6.3	65 485	5.2	179 825	5.9
Associate professionals	265 829	14.6	232 842	18.6	498 671	16.2
Clerks	148 646	8.2	381 346	30.4	529 992	17.3
Service workers and shop sales workers	264 458	14.6	223 923	17.9	488 381	15.9
Craft and related workers	294 036	16.2	26 964	2.1	321 000	10.5
Plant and machine operators and assemblers	206 880	11.4	31 649	2.5	238 529	7.8
Elementary occupations	258 156	14.2	196 639	15.7	454 795	14.8
Skilled agricultural and fishery workers; and occupations not classifiable	7 725	0.4	2 836	0.2	10 561	0.3
Total	1 817 093	100.0	1 254 298	100.0	3 071 391	100.0

Working Population by Industry and Sex, 1991, 1996 and 2001
(Excluding Foreign Domestic Helpers)

Year and Industry	Male		Female		Both Sexes	
	Number	%	Number	%	Number	%
1991						
Manufacturing	446 676	26.5	321 445	33.0	768 121	28.9
Construction	176 629	10.5	11 222	1.2	187 851	7.1
Wholesale, retail and import/export trades, restaurants and hotels	363 683	21.6	247 703	25.4	611 386	23.0
Transport, storage and communication	220 974	13.1	44 712	4.6	265 686	10.0
Financing, insurance, real estate and business services	171 618	10.2	115 550	11.9	287 168	10.8
Community, social and personal services	263 661	15.6	220 450	22.6	484 111	18.2
Others ⁽¹⁾	41 965	2.5	13 803	1.4	55 768	2.1
Total	1 685 206	100.0	974 885	100.0	2 660 091	100.0
1996						
Manufacturing	354 345	19.4	220 522	20.1	574 867	19.7
Construction	225 061	12.3	20 379	1.9	245 440	8.4
Wholesale, retail and import/export trades, restaurants and hotels	426 597	23.3	330 642	30.2	757 239	25.9
Transport, storage and communication	256 397	14.0	74 577	6.8	330 974	11.3
Financing, insurance, real estate and business services	243 334	13.3	165 352	15.1	408 686	14.0
Community, social and personal services	290 017	15.8	271 858	24.8	561 875	19.2
Others ⁽¹⁾	34 905	1.9	11 539	1.1	46 444	1.6
Total	1 830 656	100.0	1 094 869	100.0	2 925 525	100.0
2001						
Manufacturing	247 887	13.6	153 065	12.2	400 952	13.1
Construction	227 594	12.5	20 289	1.6	247 883	8.1
Wholesale, retail and import/export trades, restaurants and hotels	426 747	23.5	425 872	34.0	852 619	27.8
Transport, storage and communication	283 294	15.6	83 018	6.6	366 312	11.9
Financing, insurance, real estate and business services	309 218	17.0	213 604	17.0	522 822	17.0
Community, social and personal services	297 364	16.4	351 041	28.0	648 405	21.1
Others ⁽¹⁾	24 989	1.4	7 409	0.6	32 398	1.1
Total	1 817 093	100.0	1 254 298	100.0	3 071 391	100.0

Note : (1) "Others" include such industries as "Agriculture and fishing", "Mining and quarrying", "Electricity, gas and water" and industrial activities inadequately described or unclassifiable.

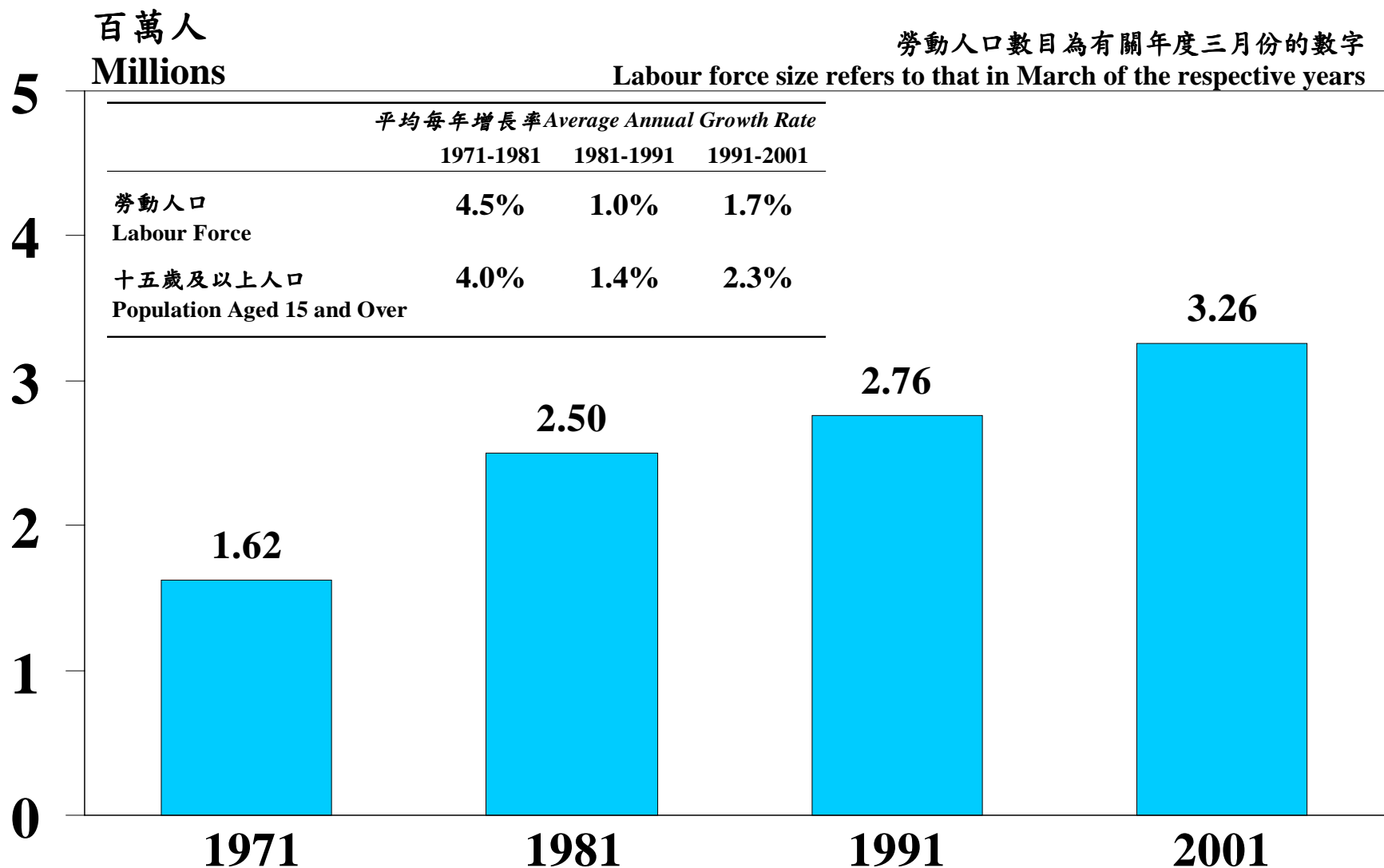
**Median Monthly Income from Main Employment of Working Population⁽¹⁾
by Occupation and Sex, 1991, 1996 and 2001
(Excluding Foreign Domestic Helpers)**

Occupation	Median Monthly Income from Main Employment (HK\$)								
	1991			1996			2001		
	Male	Female	Overall	Male	Female	Overall	Male	Female	Overall
Managers and administrators	12,000	10,000	12,000	20,000	18,000	20,000	26,380	24,000	26,000
Professionals	16,000	12,500	15,000	26,000	21,000	24,000	30,000	26,250	30,000
Associate professionals	8,500	8,000	8,000	15,000	13,500	14,000	16,500	16,000	16,000
Clerks	5,500	5,000	5,000	9,500	8,600	9,000	10,000	10,000	10,000
Service workers and shop sales workers	6,000	4,000	5,000	10,000	7,000	8,500	11,000	7,400	9,200
Craft and related workers	5,500	3,600	5,000	9,000	6,500	8,500	10,000	7,000	10,000
Plant and machine operators and assemblers	5,500	3,000	4,500	9,000	5,400	8,500	10,000	6,000	10,000
Elementary occupations	4,000	3,000	3,750	7,000	5,000	6,000	7,500	5,500	6,700
Skilled agricultural and fishery workers; and occupations not classifiable	4,000	2,000	3,500	7,500	5,480	7,000	8,000	4,500	7,000
Overall	6,000	4,415	5,170	10,000	8,500	9,800	12,000	10,000	11,000

Note : (1) The figures exclude unpaid family workers.

勞動人口數目及增長（不包括外籍家庭傭工）

Size and Growth of Labour Force (Excluding Foreign Domestic Helpers)



註釋：1971年時未有外籍家庭傭工，而1981年的外籍家庭傭工為數甚少。1981年的數字包含了外籍家庭傭工而不能分開出來。
Note: There was no foreign domestic helpers in 1971, while the number of foreign domestic helpers in 1981 was small. The figure for 1981 included foreign domestic helpers and separate figure of foreign domestic helpers is not available.

勞動人口（不包括外籍家庭傭工）

Labour Force (Excluding Foreign Domestic Helpers)

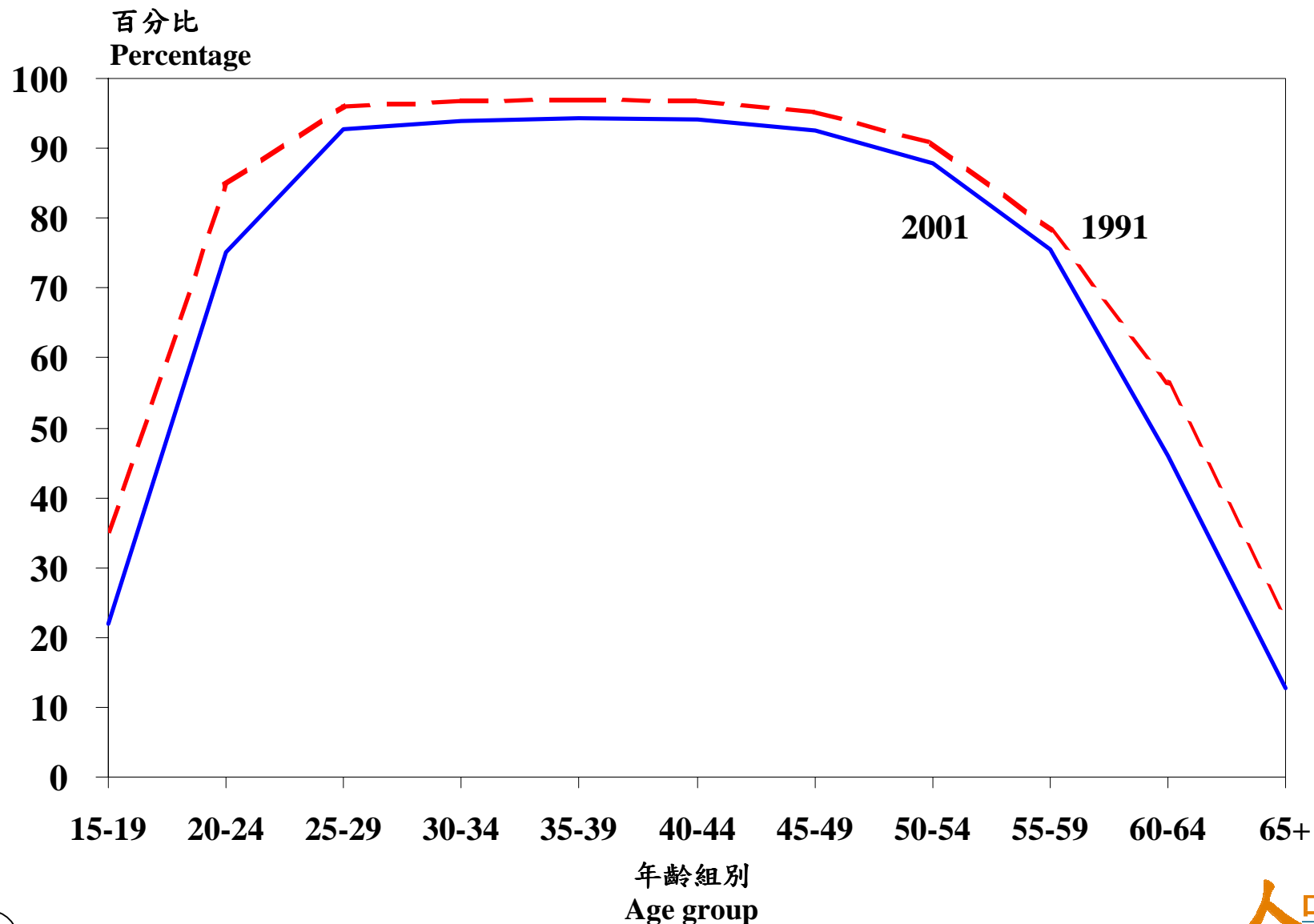
性別 Sex	百萬人 Millions		
	1991	2001	增加 <i>Increase</i>
男 Male	1.74	1.95	0.21
女 Female	1.01	1.31	0.30
合計 Both Sexes	2.76	3.26	0.50

勞動人口參與率 Labour Force Participation Rate

性別 Sex	包括外籍家庭傭工 Including Foreign Domestic Helpers		不包括外籍家庭傭工 Excluding Foreign Domestic Helpers	
	1991	2001	1991	2001
男 Male	78.7%	71.9%	78.7%	71.9%
女 Female	49.5%	51.6%	48.2%	48.4%
合計 Both Sexes	64.3%	61.4%	63.9%	60.1%

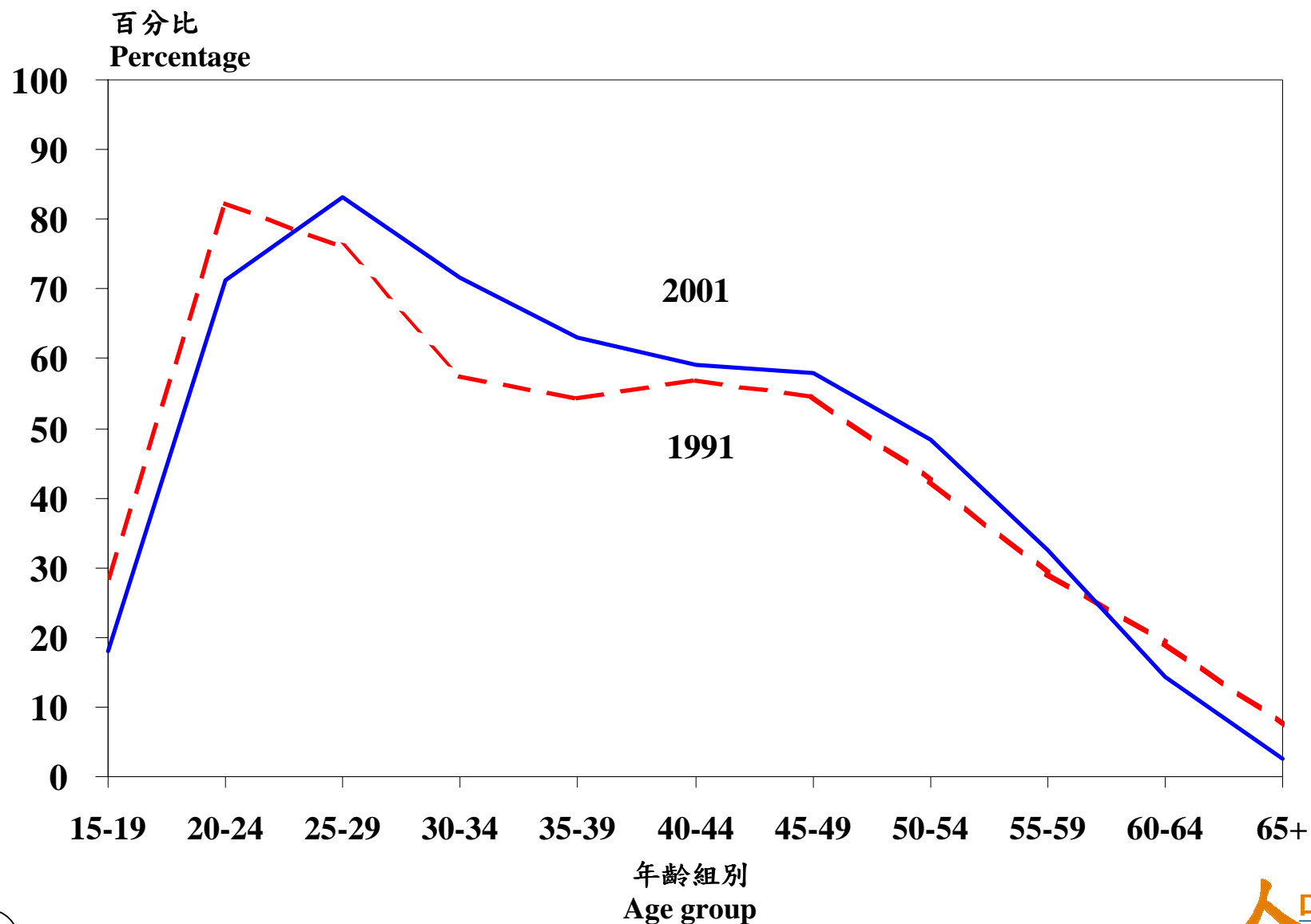
按年齡組別劃分的男性勞動人口參與率（不包括外籍家庭傭工）

Labour Force Participation Rates of Males by Age Group (Excluding Foreign Domestic Helpers)



按年齡組別劃分的女性勞動人口參與率（不包括外籍家庭傭工）

Labour Force Participation Rates of Females by Age Group (Excluding Foreign Domestic Helpers)



已婚及從未結婚的女性勞動人口參與率 (不包括外籍家庭傭工)

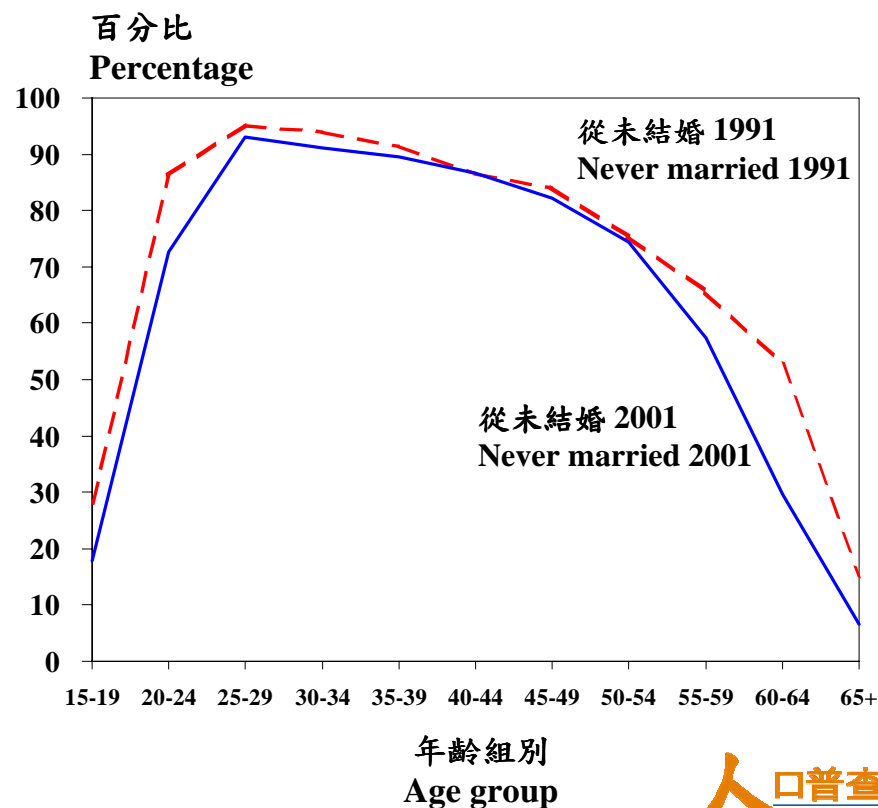
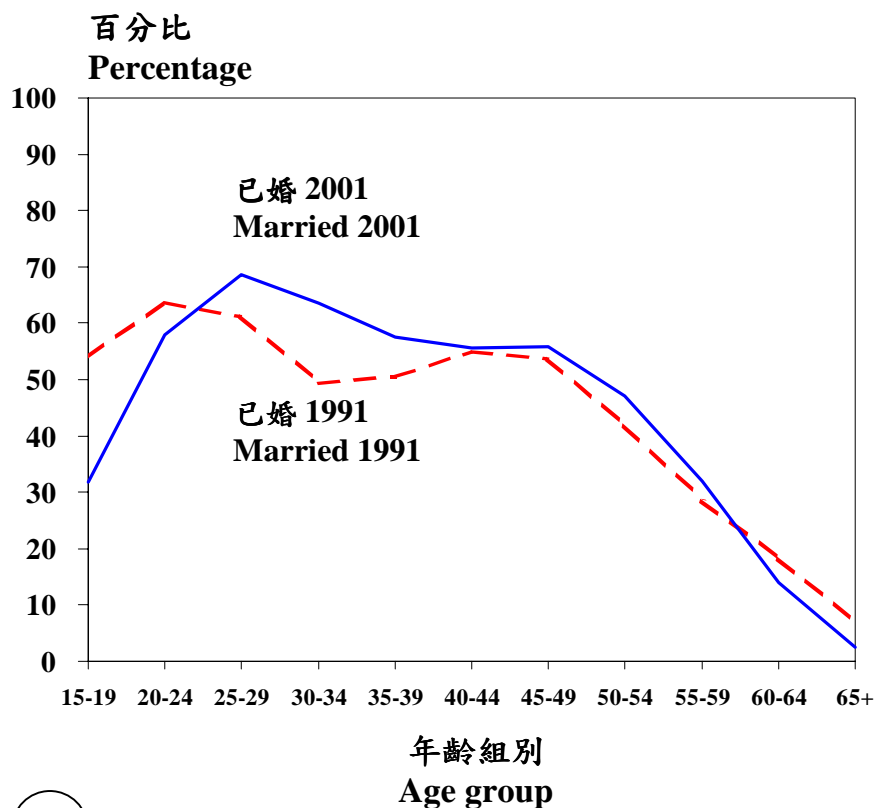
Labour Force Participation Rates of Married and Never-married Females (Excluding Foreign Domestic Helpers)

女性勞動人口參與率
Labour Force Participation
Rate of Females

	<u>1991</u>	<u>2001</u>
已婚 Married	40.4%	42.0%

女性勞動人口參與率
Labour Force Participation
Rate of Females

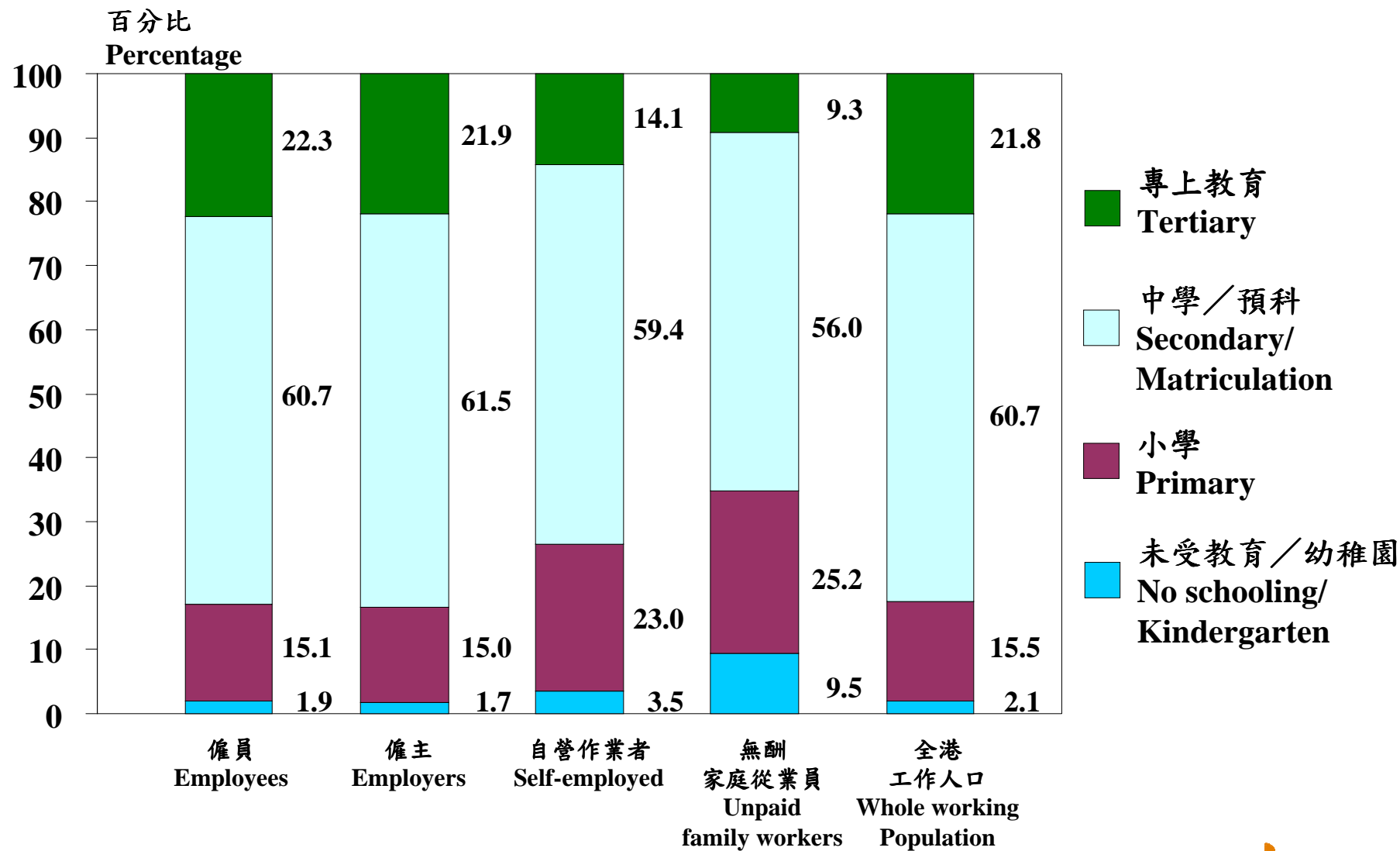
	<u>1991</u>	<u>2001</u>
從未結婚 Never-married	68.1%	64.1%



按教育程度劃分的工作人口比例（不包括外籍家庭傭工）
**Proportion of Working Population by Educational Attainment
 (Excluding Foreign Domestic Helpers)**

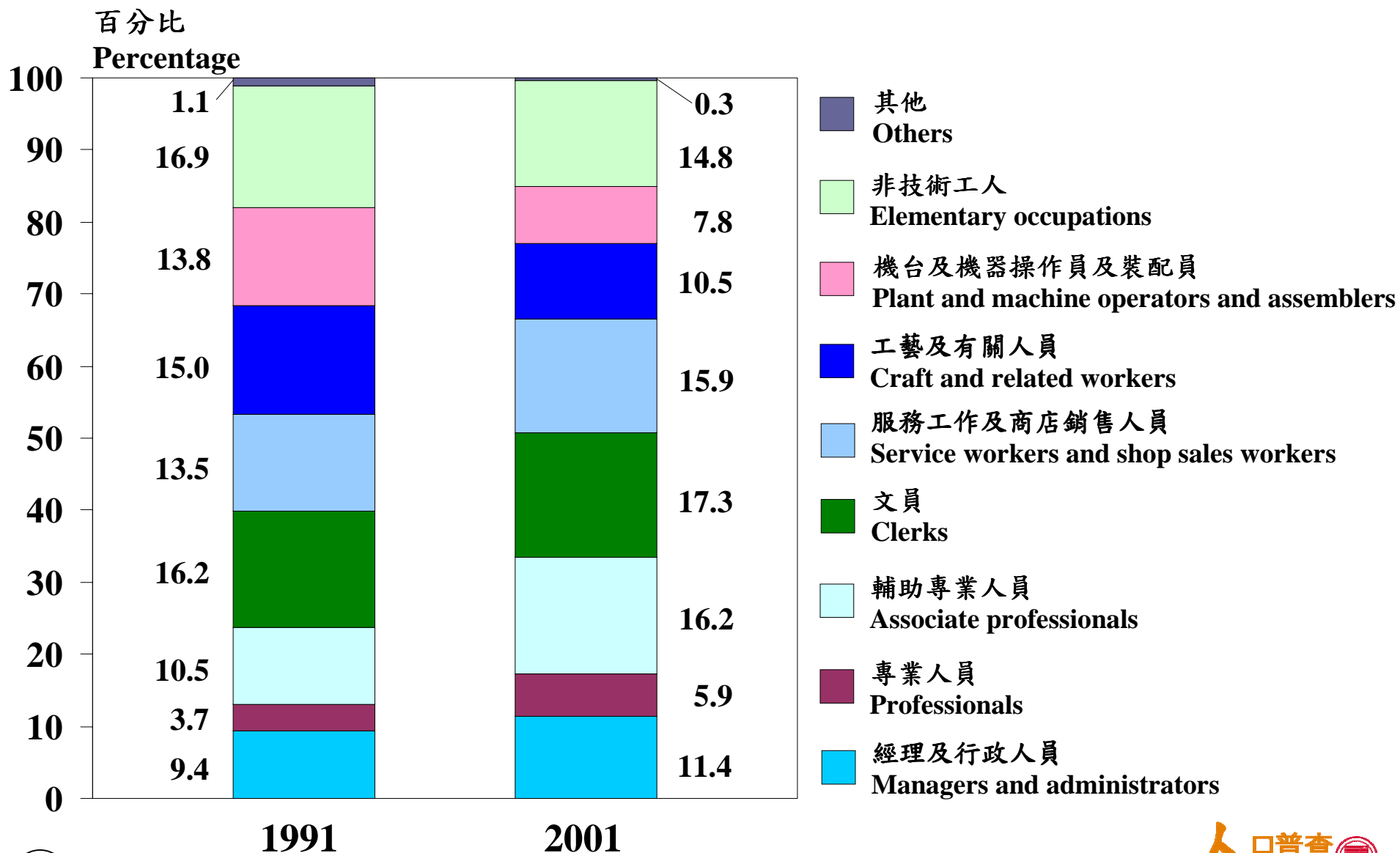
教育程度 Educational Attainment	1991	2001
未受教育／幼稚園 No schooling/Kindergarten	5.7%	2.1%
小學 Primary	23.3%	15.5%
中學／預科 Secondary/Matriculation	57.2%	60.7%
專上教育 Tertiary	13.8%	21.8%
總計 Total	100.0%	100.0%

二零零一年按教育程度及經濟活動身分劃分的工作人口（不包括外籍家庭傭工）
Working Population by Educational Attainment and Economic Activity Status, 2001
 (Excluding Foreign Domestic Helpers)



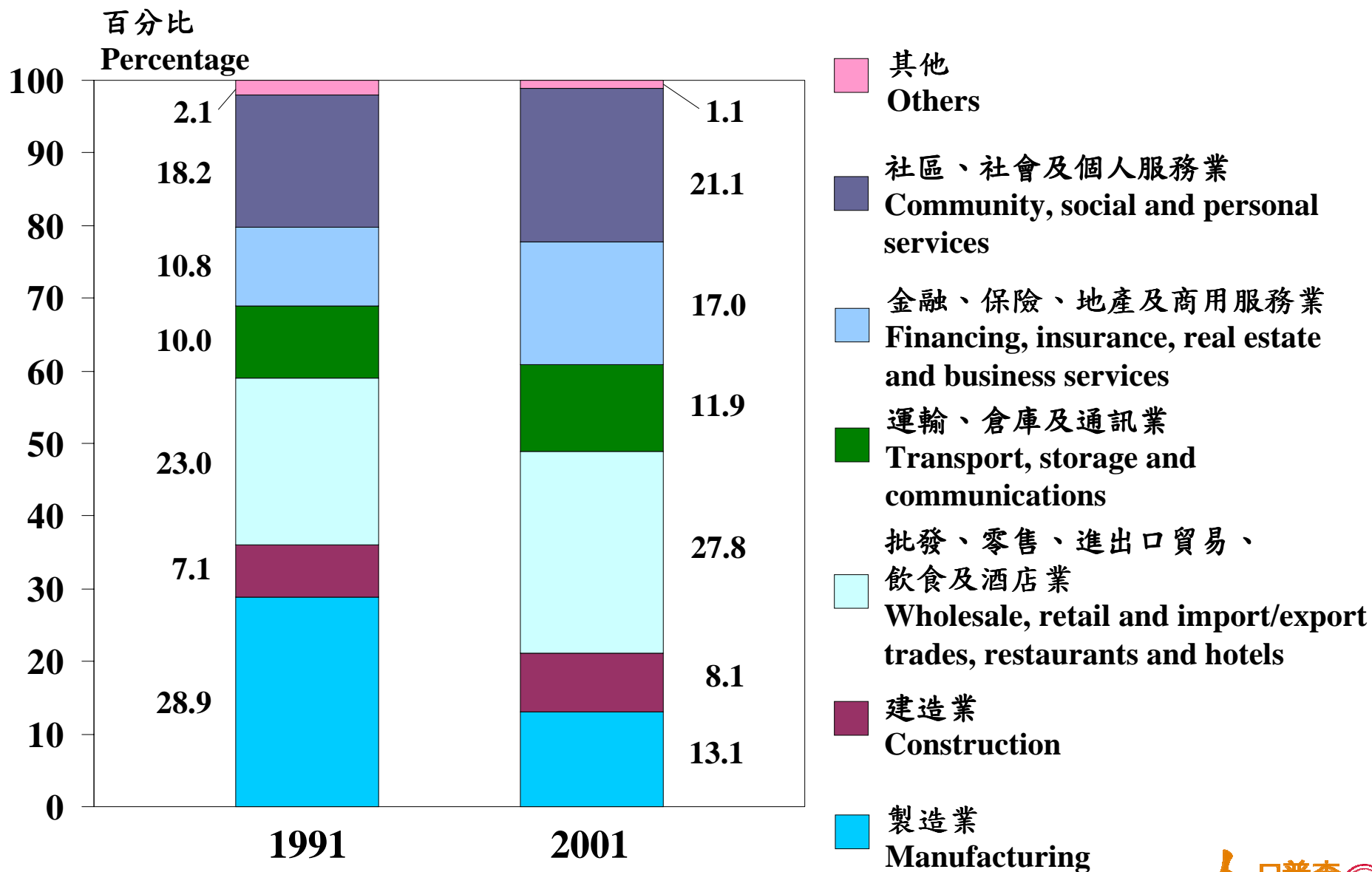
按職業劃分的工作人口（不包括外籍家庭傭工）

Working Population by Occupation (Excluding Foreign Domestic Helpers)



按行業劃分的工作人口（不包括外籍家庭傭工）

Working Population by Industry (Excluding Foreign Domestic Helpers)

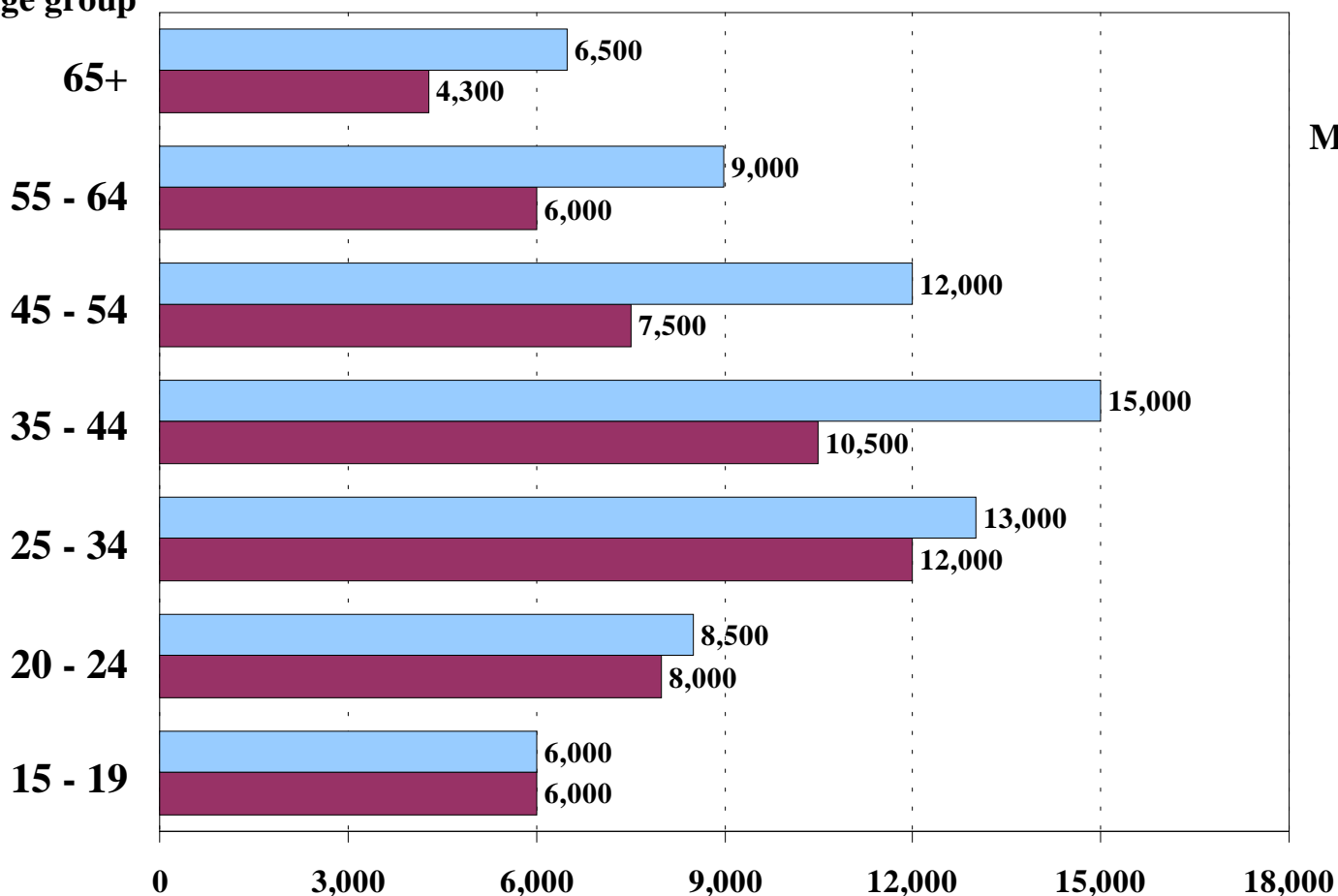


工作人口的每月主要職業收入中位數（不包括外籍家庭傭工）
**Median Monthly Income from Main Employment of Working Population
 (Excluding Foreign Domestic Helpers)**

	1991	2001	變動 Change
每月主要職業收入中位數（港元） Median Monthly Income from Main Employment (HK\$)	5,170	11,000	+113%
綜合消費物價指數 Composite Consumer Price Index			+53%

二零零一年按性別及年齡組別劃分的工作人口的每月主要職業收入中位數 (不包括外籍家庭傭工)
**Median Monthly Income from Main Employment of Working Population
 by Sex and Age Group, 2001 (Excluding Foreign Domestic Helpers)**

年齡組別
Age group



每月主要職業
收入中位數 (港元)
**Median Monthly Income from
Main Employment (HK\$)**

男 12,000

Male

女 10,000

Female

合計 11,000

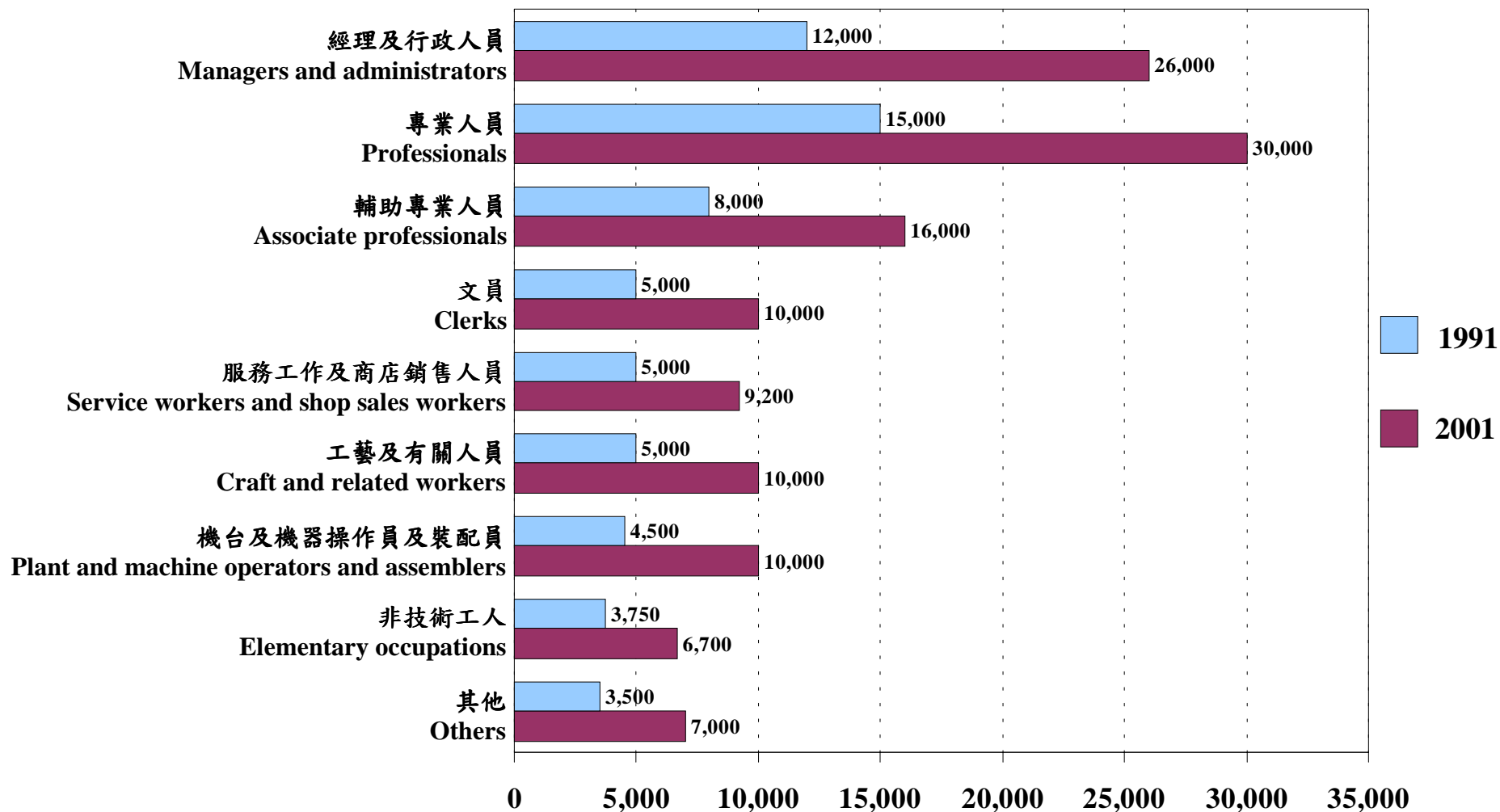
Both Sexes

男
Male

女
Female

每月主要職業收入中位數 (港元)
Median monthly income from main employment (HK\$)

按職業劃分的工作人口的每月主要職業收入中位數（不包括外籍家庭傭工）
Median Monthly Income from Main Employment of Working Population by Occupation
(Excluding Foreign Domestic Helpers)



每月主要職業收入中位數（港元）
Median monthly income from main employment (HK\$)