

For information

**LEGISLATIVE COUNCIL PANEL
ON PLANNING, LANDS AND WORKS**

West Kowloon Reclamation – Remaining Roadworks

PURPOSE

This paper informs Members of our proposal to carry out remaining roadworks to serve the developments in the West Kowloon Reclamation (WKR) area.

PROJECT SCOPE AND NATURE

2. We propose to carry out the following works:-
 - (a) construction of a 400 metres (m) long one way single-lane Road G linking West Kowloon Highway southbound with Lai Po Road northbound (section north of Lai Wan Interchange (LWI));
 - (b) construction of two vehicular bridges associated with Road G;
 - (c) construction of a 450m long one way two-lane Road L linking Lai Po Road northbound (section south of LWI) with Lin Cheung Road southbound underneath LWI;
 - (d) construction of two footbridges along Sham Mong Road and associated works;

- (e) associated drainage and landscaping works.

The site plan and details of the proposed works are shown in Enclosures 1 to 4.

JUSTIFICATIONS

Construction of Road G and Road L

3. We need to construct Road G and Road L at LWI to cope with the additional traffic that will be generated after the opening of Route 9.

4. Route 9 is a strategic highway linking Tsing Yi with Sha Tin via Cheung Sha Wan. The Director of Highways plans to start the construction of the section of Route 9 between Cheung Sha Wan and Sha Tin in late 2003 for completion in mid 2007. A slip road from Route 9, bringing traffic from Sha Tin, will connect to LWI (i.e. the hatched road section A at Enclosure 2). This traffic will seriously hamper the entire LWI. We therefore need to provide Road L at LWI to release the congested traffic upon the opening of this section of Route 9 in 2007. A comparison of the projected volume/capacity (v/c) ratios¹ during the peak hours at LWI with or without the proposed Road L in 2007 and 2011 is as follows -

| | Year | |
|-------------------------|------|------|
| | 2007 | 2011 |
| Without proposed Road L | 1.4 | 1.4 |
| With proposed Road L | 0.9 | 1.0 |

¹ A volume/capacity (v/c) ratio equals to or less than 1.0 means that the road has sufficient capacity to cope with the volume of vehicular traffic under consideration and the resultant traffic will flow smoothly. A v/c ratio above 1.0 indicates the onset of congestion; above 1.2 indicates more serious congestion with traffic speeds progressively deteriorating with further increases in traffic.

The proposed Road L will cross the traffic from the slip road of West Kowloon Highway southbound towards Lai Po Road northbound (i.e. the hatched road section B at Enclosure 2). In this connection, we need to construct Road G and associated vehicular bridges to separate traffic with Road L. The proposed Road G will divert traffic from West Kowloon Highway southbound towards Sha Tin via Route 9. We will commence the construction of Road G and Road L in June 2002² for completion in early 2004.

Construction of the footbridges

5. The two proposed footbridges are required to serve the developments along Sham Mong Road in WKR. The developments along Sham Mong Road, including public and private housing developments, schools, the West Rail Nam Cheong Station and a Police Married Quarters, are in progress and will be completed in the coming few years. We estimate that the amount of traffic using Sham Mong Road will increase upon completion of the above developments. The current arrangement for pedestrians to use at-grade crossings along Sham Mong Road will become increasingly dangerous. The two proposed footbridges located at junction of Sham Mong Road/Sham Shing Road and at junction of Sham Mong Road/Hoi Fai Road will serve as safe and comfortable grade-separated pedestrian crossings for pedestrians. When the footbridges are open to the public, the existing at-grade pedestrian crossings will be removed.

6. As regards the landscaping works, we will provide about 18 000 square metres of amenity area along the proposed roads and protect formed slope by hydroseeding and plant trees on the slopes as appropriate. We will transplant 13 existing trees affected by the project and plant 300 new trees using native species in roadside planting as far as possible.

² To expedite the project programme, we have completed the detailed design and drawings for the proposed construction works. The tender documents will be finalised in January 2002. Subject to funding approval of the Finance Committee, we will start the tendering procedures in February 2002 for completion in May 2002.

7. To provide a complementary road network and the necessary footbridges for the surrounding developments, we plan to commence the construction of these two footbridges in June 2002 for completion in December 2004 to tie in with the completion of the public housing development along Sham Mong Road.

PUBLIC CONSULTATION

8. We consulted the Traffic Committee of the Sham Shui Po District Council and the Traffic and Transport Committee of the Yau Tsim Mong District Council on 22 March 2001 on the proposed works. Both Committees supported the proposed works.

9. We gazetted the proposed works under the Roads (Works, Use and Compensation) Ordinance on 15 June 2001 and received no objections. The Secretary for Transport authorised the proposed road works on 14 September 2001.

ENVIRONMENTAL IMPLICATIONS

10. The two proposed footbridges along Sham Mong Road are not designated projects under the Environmental Impact Assessment (EIA) Ordinance (Cap. 499). The proposed Roads G and L are designated projects under Schedule 2 of the EIA Ordinance and an environmental permit is required for their construction and operation.

11. In January 2001, the Director of Environmental Protection approved the EIA report for the project under the EIA Ordinance. The EIA report concluded that the environmental impact of the project could be controlled to within the criteria under the Ordinance and the relevant Technical Memorandum. We will implement the measures recommended in the approved EIA report. The key measures include the control of noise, dust, water quality and site run-off to within established standards and guidelines through the implementation of pollution control measures

in the works contract during construction stage. In addition, we will set up an environmental team to carry out the recommended environmental monitoring and auditing (EM&A) programme during the construction stage and employ independent environment checkers to audit the overall EM&A programme.

LAND ACQUISITION

12. The proposed works do not require any land acquisition and clearance.

WAY FORWARD

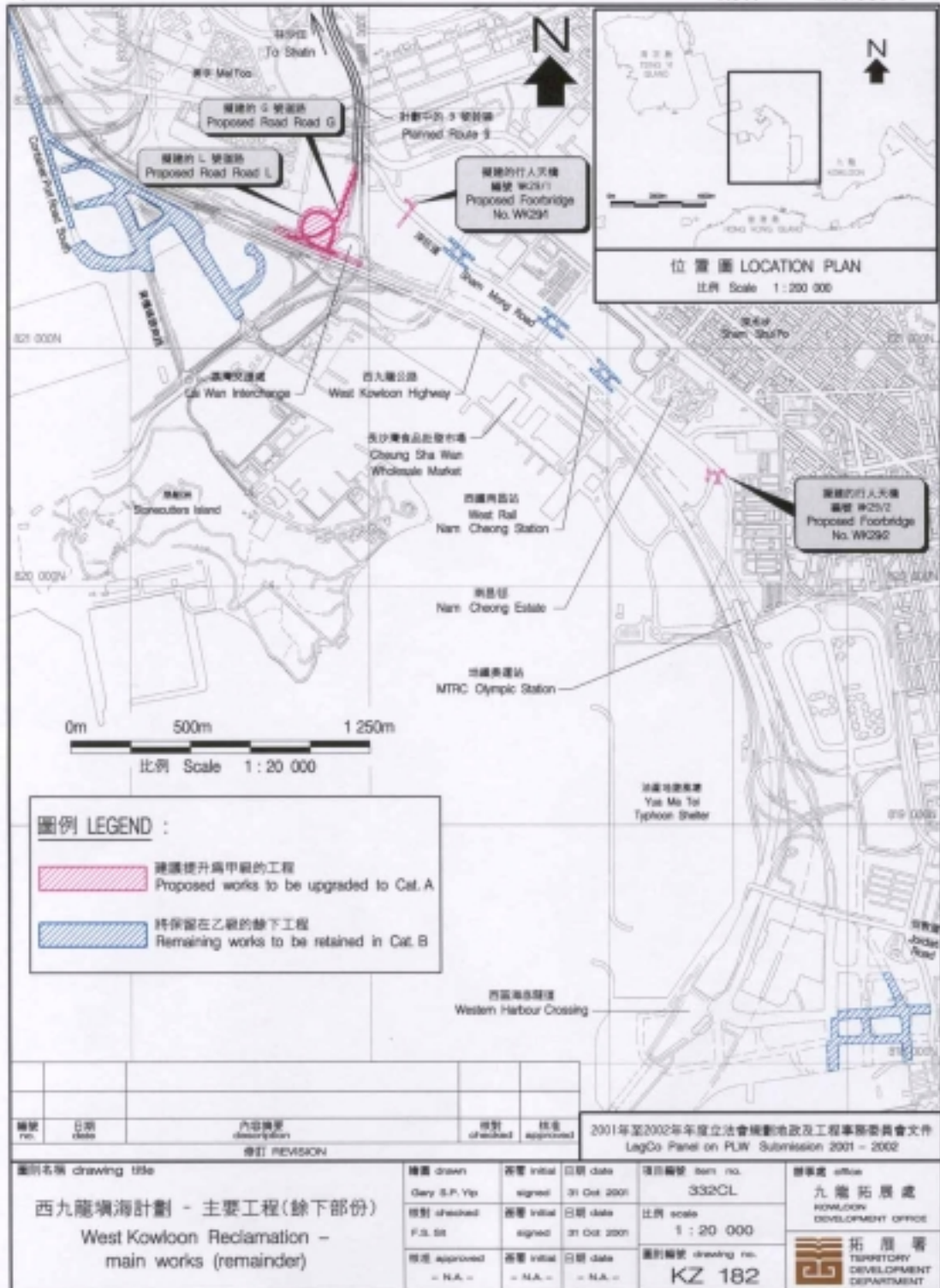
13. We plan to seek the Public Works Sub-Committee's endorsement for upgrading the works mentioned in paragraph 2 (at an estimated cost of \$223.4 million) to Category A on 28 November 2001.

14. We would be pleased to brief Members on the details of the project if necessary.

ATTACHMENT

- Enclosure 1 – Drawing No. KZ182
- Enclosure 2 – Drawing No. KZ183A
- Enclosure 3 – Drawing No. KZ184A
- Enclosure 4 – Drawing No. KZ185

Territory Development Department
November 2001



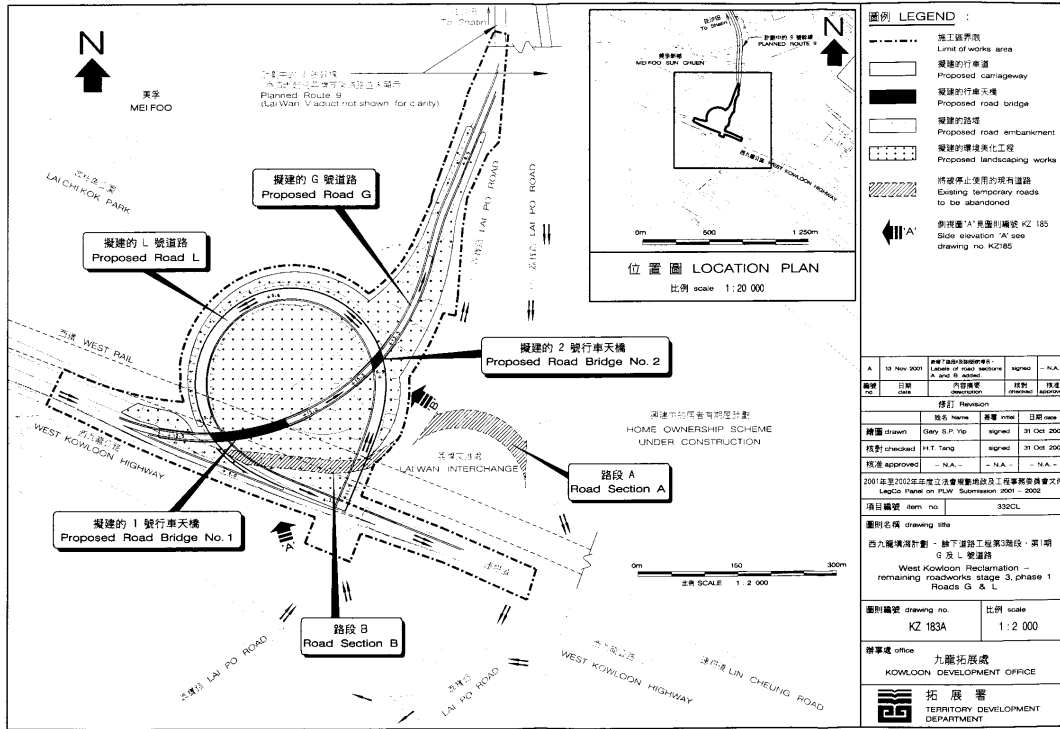
圖例 LEGEND :

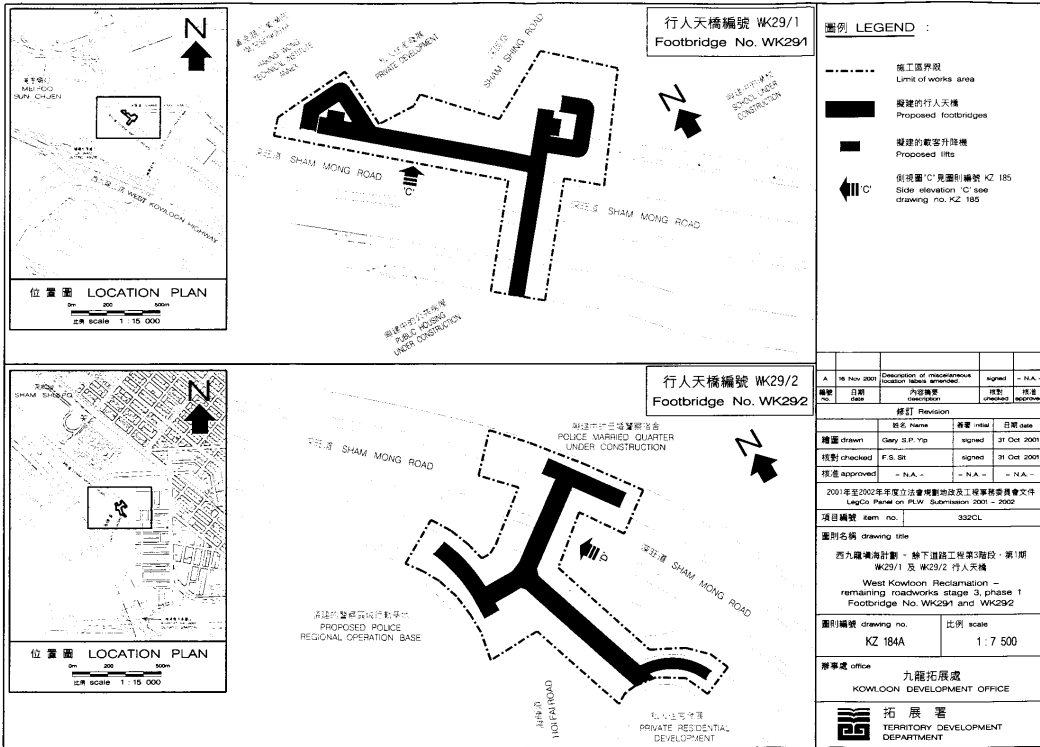
- 建議提升為甲級的工程
Proposed works to be upgraded to Cat. A
- 將保留在乙級的餘下工程
Remaining works to be retained in Cat. B

| 編號 no. | 日期 date | 內容摘要 description | 校對 checked | 批准 approved |
|-------------|------------|---------------------|---------------|----------------|
| 修訂 REVISION | | | | |

2001年至2002年年度立法會規劃、地政及工程事務委員會文件
LegCo Panel on PLW Submission 2001 - 2002

| | | | | | |
|---|---------------------------|------------------------|------------------------|----------------------------|---|
| 圖則名稱 drawing title 西九龍填海計劃 - 主要工程(餘下部份) West Kowloon Reclamation - main works (remainder) | 繪圖 drawn Gary S.P. Yip | 簽署 initial signed | 日期 date 31 Oct 2001 | 項目編號 item no. 332CL | 辦事處 office 九龍拓展處 KOWLOON DEVELOPMENT OFFICE 拓展署 TERRITORY DEVELOPMENT DEPARTMENT |
| | 校對 checked F.S. Sit | 簽署 initial signed | 日期 date 31 Oct 2001 | 比例 scale 1 : 20 000 | |
| | 校對 approved - N.A. - | 簽署 initial - N.A. - | 日期 date - N.A. - | 圖則編號 drawing no. KZ 182 | |





圖例 LEGEND :

- 施工區界線
Limits of works area
- 擬建的行人天橋
Proposed footbridges
- 擬建的載客升降機
Proposed lifts
- 側視圖 'C' 見圖則編號 KZ 185
Side elevation 'C' see drawing no. KZ 185

| 編號 No. | 日期 Date | 內容 Description of miscellaneous location notes amended | 簽署 Signed | 日期 Date |
|--------|-------------|--|-----------|----------|
| A | 16 Nov 2001 | 內詳備案 | 簽署 | - N.A. - |

| 修訂 Revision | | | |
|-------------|-----------------|------------|-------------|
| 修訂 No. | 姓名 Name | 簽署 Initial | 日期 Date |
| 繪圖 drawn | Carry Si P' Yip | 簽署 signed | 31 Oct 2001 |
| 核對 checked | F. S. Sit | 簽署 signed | 31 Oct 2001 |
| 核實 approved | - N.A. - | - N.A. - | - N.A. - |

2001年至2002年年度立法會補選地段及工程審裁處卷宗文件
LegCo Panel on PLW Submission 2001 - 2002

| | |
|---------------|-------|
| 項目編號 item no. | 332CL |
|---------------|-------|

圖則名稱 drawing title
西九龍填海計劃 - 餘下道路工程第3階段 - 第一期
West Kowloon Reclamation - remaining roadworks stage 3, phase 1
Footbridge No. WK29/1 and WK29/2

| | | | |
|------------------|---------|----------|---------|
| 圖則編號 drawing no. | KZ 184A | 比例 scale | 1:7 500 |
|------------------|---------|----------|---------|

辦事處 office
九龍拓展處
KOWLOON DEVELOPMENT OFFICE

拓展署
TERRITORY DEVELOPMENT DEPARTMENT

