

**嚴重急性呼吸系統綜合症對業務影響的按星期諮詢結果
(截至二零零三年五月三十一日的一周)**

**Results of Weekly Consultations on Effect of SARS on Business
(Up to the week ending 31 May 2003)**

<i>統計表</i>	<i>Statistical Tables</i>	1-7
一甲 按行業劃分的公司目前業務收益與正常情況比較的每周平均變動百分比	1A Weekly Average % Change in Current Business Receipts of Companies as Compared with the Normal Situation by Sector	2
一乙 按行業劃分的公司目前就業人數與正常情況比較的每周平均變動百分比	1B Weekly Average % Change in Current Employment of Companies as Compared with the Normal Situation by Sector	3
二甲 按行業劃分的公司未來一個月的業務收益與目前情況比較的每周平均變動百分比	2A Weekly Average % Change in Business Receipts of Companies in One Month's Time as Compared with the Current Situation by Sector	4
二乙 按行業劃分的公司未來一個月的就業人數與目前情況比較的每周平均變動百分比	2B Weekly Average % Change in Employment of Companies in One Month's Time as Compared with the Current Situation by Sector	5
三甲 按行業劃分的公司未來三個月的業務收益與目前情況比較的每周平均變動百分比	3A Weekly Average % Change in Business Receipts of Companies in Three Months' Time as Compared with the Current Situation by Sector	6
三乙 按行業劃分的公司未來三個月的就業人數與目前情況比較的每周平均變動百分比	3B Weekly Average % Change in Employment of Companies in Three Months' Time as Compared with the Current Situation by Sector	7

表一甲： 按行業劃分的公司目前業務收益與正常情況比較的每周平均變動百分比
Table 1A : Weekly Average % Change in Current Business Receipts of Companies as Compared with the Normal Situation by Sector

業務收益變動百分比
 % change in business receipts

行業 Sector	截至下列日期的一周 Week ending					
	26.4.2003	3.5.2003	10.5.2003	17.5.2003	24.5.2003	31.5.2003
零售業 Retail	-32.3	-29.4	-26.3	-21.8	-20.5	-17.8
飲食業 Restaurants	-43.6	-41.8	-36.8	-28.5	-27.2	-22.6
酒店業 Hotels	-75.2	-76.3	-78.9	-77.9	-76.3	-75.9
旅行社及票務代理 Travel agents and airline ticket agents	-57.3	-60.8	-57.3	-57.2	-55.2	-50.0
航空公司 Airline	-65.0	-65.0	-65.0	-65.0	-65.0	-60.0
的士公司 Taxi companies	-40.6	-41.1	-40.2	-41.1	-38.3	-38.3
清潔及同類服務 Sanitary and similar services	2.7	2.2	2.8	2.5	2.8	2.8
電影院 Cinemas and movie theatres	-55.1	-54.7	-54.3	-45.0	-35.3	-13.7
保險業 Insurance	-0.6	-3.9	-2.7	-1.9	-3.0	-0.6
地產代理 Real estate agencies	-4.9	-9.0	-7.5	-6.5	-1.5	-2.5
地產發展商 Real estate developers	-3.4	-9.6	-9.6	-5.1	-4.1	-3.1
修葺及保養工程（包括供水管鋪設） Repair and maintenance (incl. water plumbing)	-7.5	-7.5	-6.8	-6.5	-6.0	-5.6
進出口貿易業 Import/Export	-6.2	-7.2	-6.3	-5.1	-4.0	-2.6
製造業 Manufacturing	-6.2	-4.8	-8.0	-5.2	-7.9	-7.8
所有選定行業 All selected sectors	-11.2	-11.7	-11.0	-9.2	-8.5	-6.9

表一乙：按行業劃分的公司目前就業人數與正常情況比較的每周平均變動百分比
Table 1B : Weekly Average % Change in Current Employment of Companies as Compared with the Normal Situation by Sector

就業人數變動百分比
 % change in number of persons engaged

行業 Sector	截至下列日期的一周 Week ending					
	26.4.2003	3.5.2003	10.5.2003	17.5.2003	24.5.2003	31.5.2003
零售業 Retail	-1.5	-1.7	-1.4	-1.4	-1.0	-1.1
飲食業 Restaurants	-6.3	-7.2	-6.5	-5.8	-4.2	-3.9
酒店業 Hotels	-2.4	-2.6	-2.8	-2.7	-5.6	-4.3
旅行社及票務代理 Travel agents and airline ticket agents	-1.6	-1.7	-1.5	-1.5	-1.5	-1.5
航空公司 Airline	0.0	0.0	0.0	0.0	0.0	0.0
的士公司 Taxi companies	0.0	0.0	0.0	0.0	0.0	0.0
清潔及同類服務 Sanitary and similar services	3.1	2.8	2.0	2.0	1.9	2.2
電影院 Cinemas and movie theatres	-3.0	-6.7	-6.7	-3.3	-3.0	-3.5
保險業 Insurance	0.0	0.0	0.1	0.0	0.0	0.0
地產代理 Real estate agencies	0.0	0.0	0.0	0.0	0.0	0.5
地產發展商 Real estate developers	0.0	0.0	-2.0	-2.0	-2.0	-2.0
修葺及保養工程（包括供水管鋪設） Repair and maintenance (incl. water plumbing)	-6.4	-6.4	-6.5	-6.1	-6.9	-6.6
進出口貿易業 Import/Export	-0.1	0.0	0.0	0.0	0.0	0.0
製造業 Manufacturing	-0.1	-0.1	-0.1	-0.1	-0.2	-0.2
所有選定行業 All selected sectors	-1.4	-1.6	-1.4	-1.3	-1.1	-1.0

表二甲：按行業劃分的公司未來一個月的業務收益與目前情況比較的每周平均變動百分比

Table 2A: Weekly Average % Change in Business Receipts of Companies in One Month's Time as Compared with the Current Situation by Sector

業務收益變動百分比
% change in business receipts

行業 Sector	截至下列日期的一周 Week ending					
	26.4.2003	3.5.2003	10.5.2003	17.5.2003	24.5.2003	31.5.2003
零售業 Retail	-12.7	-6.4	-4.7	-2.8	-2.5	-0.1
飲食業 Restaurants	-13.4	-7.5	0.2	1.3	1.4	1.3
酒店業 Hotels	-40.5	-18.6	-20.9	-13.8	-14.7	-9.3
旅行社及票務代理 Travel agents and airline ticket agents	-13.8	4.6	8.0	7.1	6.9	15.1
航空公司 Airline	0.0	0.0	0.0	0.0	0.0	0.0
的士公司 Taxi companies	-21.6	-24.4	-17.9	-14.3	-12.2	-6.6
清潔及同類服務 Sanitary and similar services	1.1	0.7	-0.4	0.9	-0.3	-0.3
電影院 Cinemas and movie theatres	-7.3	-18.8	-13.3	-7.2	4.5	1.5
保險業 Insurance	-1.0	-2.7	-1.7	0.5	0.1	0.4
地產代理 Real estate agencies	-3.9	-5.5	-6.0	4.0	1.5	3.0
地產發展商 Real estate developers	-1.2	-1.1	-1.1	-0.1	0.9	0.4
修葺及保養工程（包括供水管鋪設） Repair and maintenance (incl. water plumbing)	-8.6	-8.5	-7.0	-5.7	-3.0	-2.2
進出口貿易業 Import/Export	-2.9	-2.4	-0.3	-1.4	-1.5	-1.4
製造業 Manufacturing	-5.6	-3.8	-5.0	-4.5	-4.9	-5.3
所有選定行業 All selected sectors	-4.5	-3.0	-1.2	-1.6	-1.7	-1.3

表二乙：按行業劃分的公司未來一個月的就業人數與目前情況比較的每周平均變動百分比

Table 2B: Weekly Average % Change in Employment of Companies in One Month's Time as Compared with the Current Situation by Sector

就業人數變動百分比
% change in number of persons engaged

行業 Sector	截至下列日期的一周 Week ending					
	26.4.2003	3.5.2003	10.5.2003	17.5.2003	24.5.2003	31.5.2003
零售業 Retail	-1.0	-0.2	-0.2	-0.2	0.0	0.0
飲食業 Restaurants	-4.9	-4.0	-2.7	-0.1	0.0	0.4
酒店業 Hotels	-2.9	-2.8	-2.5	-0.3	-0.2	-1.4
旅行社及票務代理 Travel agents and airline ticket agents	0.0	0.0	0.0	0.0	0.0	0.0
航空公司 Airline	0.0	0.0	0.0	0.0	0.0	0.0
的士公司 Taxi companies	0.0	0.0	0.0	0.0	0.0	1.3
清潔及同類服務 Sanitary and similar services	0.9	0.4	-0.2	2.1	-0.1	-0.1
電影院 Cinemas and movie theatres	0.0	-3.8	0.0	0.3	0.0	0.0
保險業 Insurance	0.0	0.0	0.1	0.0	0.1	0.0
地產代理 Real estate agencies	-1.7	-1.5	-1.5	0.0	0.0	0.5
地產發展商 Real estate developers	0.0	0.0	-2.0	0.0	0.0	0.0
修葺及保養工程（包括供水管鋪設） Repair and maintenance (incl. water plumbing)	-4.0	-4.0	-3.1	-2.4	-0.4	-0.4
進出口貿易業 Import/Export	0.0	0.0	0.0	0.0	0.0	0.0
製造業 Manufacturing	-0.6	-0.4	-0.4	-0.4	-0.4	-0.4
所有選定行業 All selected sectors	-1.2	-0.9	-0.7	-0.1	-0.1	0.0

表三甲：按行業劃分的公司未來三個月的業務收益與目前情況比較的每周平均變動百分比

Table 3A: Weekly Average % Change in Business Receipts of Companies in Three Months' Time as Compared with the Current Situation by Sector

業務收益變動百分比
% change in business receipts

行業 Sector	截至下列日期的一周 Week ending					
	26.4.2003	3.5.2003	10.5.2003	17.5.2003	24.5.2003	31.5.2003
零售業 Retail	-5.7	-0.3	1.5	3.0	4.5	4.6
飲食業 Restaurants	-11.3	-1.0	3.7	4.8	4.1	9.1
酒店業 Hotels	-30.2	-11.9	15.4	44.9	31.3	29.3
旅行社及票務代理 Travel agents and airline ticket agents	10.5	24.4	25.2	31.6	32.0	35.3
航空公司 Airline	50.0	50.0	50.0	50.0	50.0	60.0
的士公司 Taxi companies	-26.3	-30.2	-21.6	-11.3	-9.3	-4.7
清潔及同類服務 Sanitary and similar services	0.5	0.1	-0.7	-0.8	-0.6	-0.6
電影院 Cinemas and movie theatres	3.6	-8.8	-1.7	2.1	14.9	10.0
保險業 Insurance	0.0	-4.0	-2.3	0.3	-1.6	0.0
地產代理 Real estate agencies	-2.8	-2.5	-1.5	6.5	3.5	5.0
地產發展商 Real estate developers	-2.6	3.7	2.2	3.4	1.4	1.4
修葺及保養工程（包括供水管鋪設） Repair and maintenance (incl. water plumbing)	-11.3	-11.1	-10.7	-8.4	-6.3	-4.8
進出口貿易業 Import/Export	-2.3	-0.6	1.8	-0.2	-0.6	-0.2
製造業 Manufacturing	-4.8	-4.6	-4.7	-4.0	-4.5	-4.2
所有選定行業 All selected sectors	-2.1	0.0	2.2	1.4	1.0	1.7

表三乙：按行業劃分的公司未來三個月的就業人數與目前情況比較的每周平均變動百分比

Table 3B: Weekly Average % Change in Employment of Companies in Three Months' Time as Compared with the Current Situation by Sector

就業人數變動百分比
% change in number of persons engaged

行業 Sector	截至下列日期的一周 Week ending					
	26.4.2003	3.5.2003	10.5.2003	17.5.2003	24.5.2003	31.5.2003
零售業 Retail	-1.3	-0.4	-0.4	-0.3	0.0	0.0
飲食業 Restaurants	-8.2	-6.2	-2.6	0.1	0.1	0.4
酒店業 Hotels	-4.4	-3.9	-2.9	-0.3	-1.0	-1.6
旅行社及票務代理 Travel agents and airline ticket agents	0.0	0.0	0.0	0.0	0.0	0.0
航空公司 Airline	0.0	0.0	0.0	0.0	0.0	0.0
的士公司 Taxi companies	0.0	0.0	0.0	0.0	0.0	1.3
清潔及同類服務 Sanitary and similar services	1.9	1.4	1.3	1.8	-0.4	-0.7
電影院 Cinemas and movie theatres	0.0	-3.8	0.0	0.3	0.0	0.0
保險業 Insurance	0.0	0.6	0.1	0.1	0.1	0.0
地產代理 Real estate agencies	-1.7	-1.5	-1.5	0.0	0.0	0.5
地產發展商 Real estate developers	-2.8	-2.5	-2.5	-0.5	-0.5	-0.5
修葺及保養工程（包括供水管鋪設） Repair and maintenance (incl. water plumbing)	-5.7	-4.9	-4.4	-3.3	-1.5	-0.8
進出口貿易業 Import/Export	0.0	0.0	0.0	0.0	0.0	0.0
製造業 Manufacturing	-0.9	-0.5	-0.5	-0.5	-0.4	-0.5
所有選定行業 All selected sectors	-1.9	-1.3	-0.7	-0.1	-0.1	-0.1

統計圖

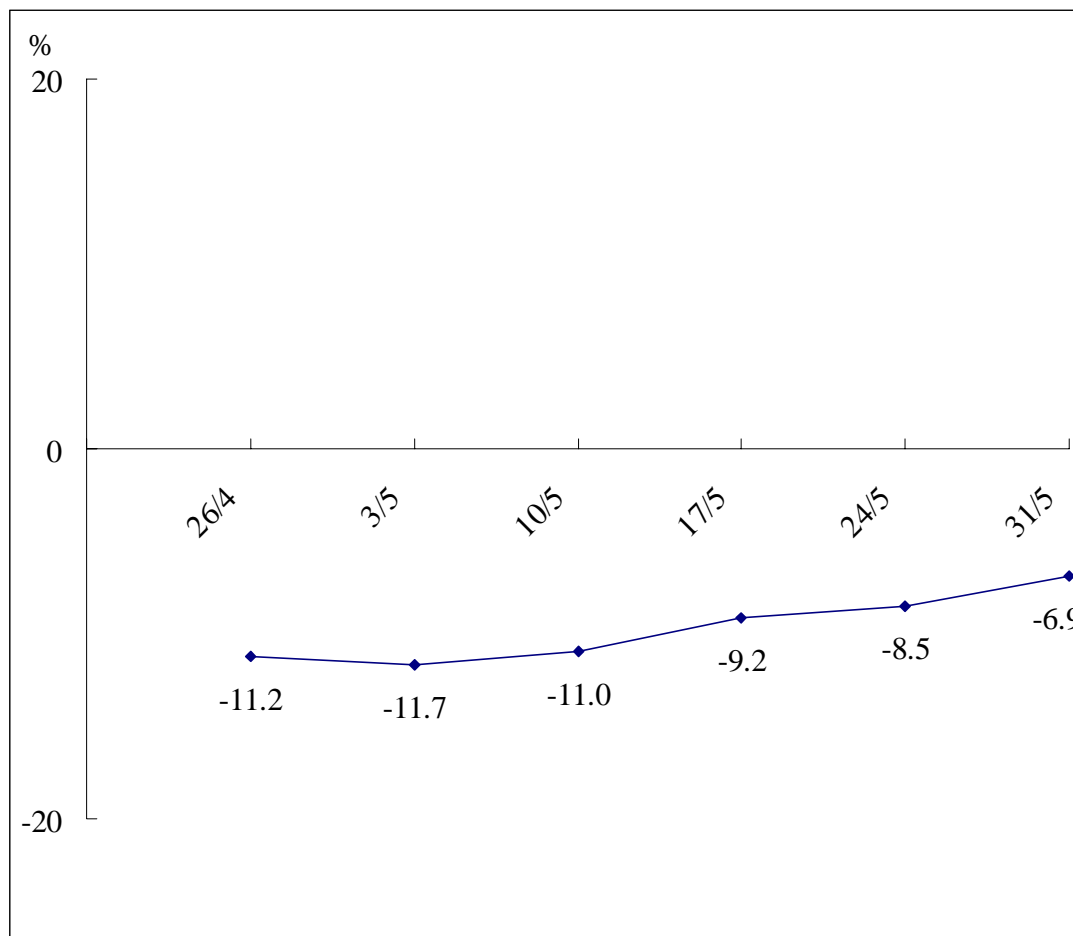
Statistical Charts

8-20

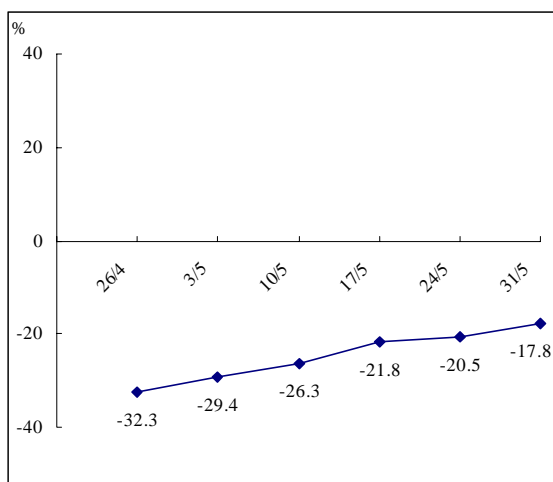
一甲 按行業劃分的公司目前業務收益與正常情況比較的每周平均變動百分比	1A Weekly Average % Change in Current Business Receipts of Companies as Compared with the Normal Situation by Sector	9-11
一乙 按行業劃分的公司目前就業人數與正常情況比較的每周平均變動百分比	1B Weekly Average % Change in Current Employment of Companies as Compared with the Normal Situation by Sector	12-14
二甲 按行業劃分的公司未來一個月及三個月的業務收益與目前情況比較的每周平均變動百分比	2A Weekly Average % Change in Business Receipts of Companies in One Month's Time and Three Months' Time as Compared with the Current Situation by Sector	15-17
二乙 按行業劃分的公司未來一個月及三個月的就業人數與目前情況比較的每周平均變動百分比	2B Weekly Average % Change in Employment of Companies in One Month's Time and Three Months' Time as Compared with the Current Situation by Sector	18-20

圖一甲：按行業劃分的公司目前業務收益與正常情況比較的每周平均變動百分比
Chart 1A : Weekly Average % Change in Current Business Receipts of Companies as Compared with the Normal Situation by Sector

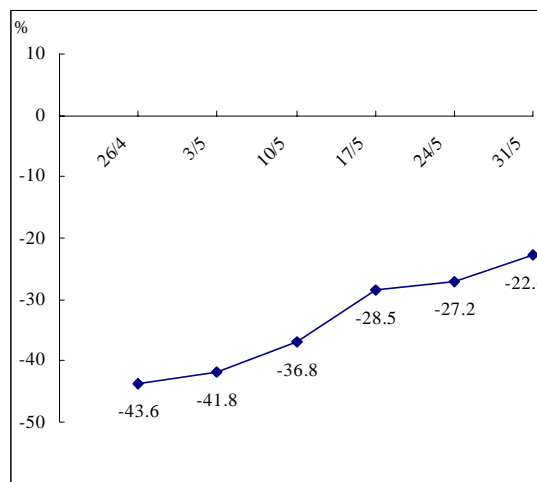
包括所有的諮詢行業
 All sectors included in the consultation



零售業
Retail

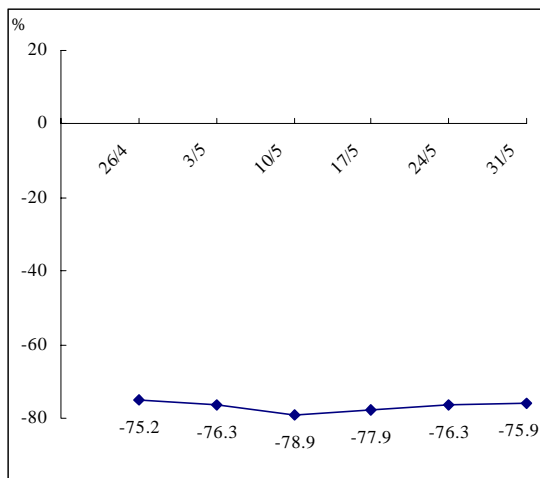


飲食業
Restaurants

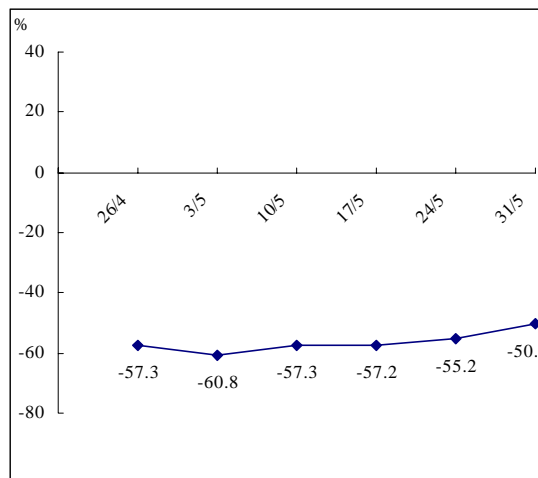


圖一甲（續）：按行業劃分的公司目前業務收益與正常情況比較的每周平均變動百分比
 Chart 1A (Cont'd) : Weekly Average % Change in Current Business Receipts of Companies as Compared with the Normal Situation by Sector

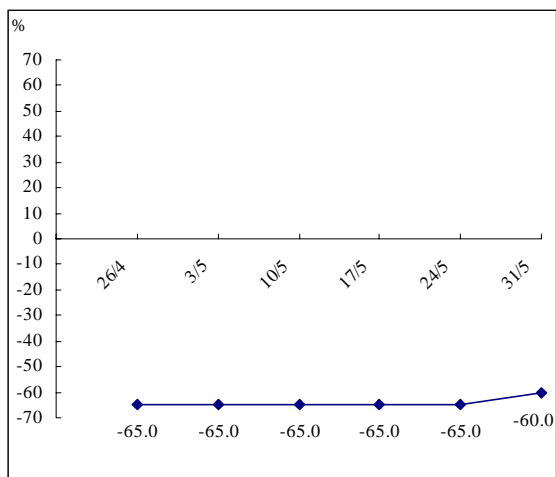
酒店業
Hotels



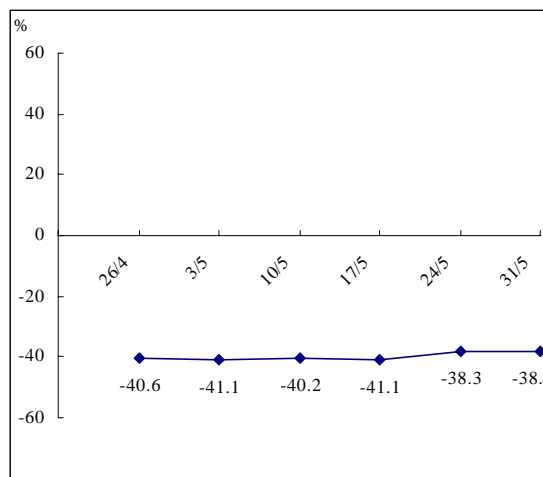
旅行社及票務代理
Travel agents and airline ticket agents



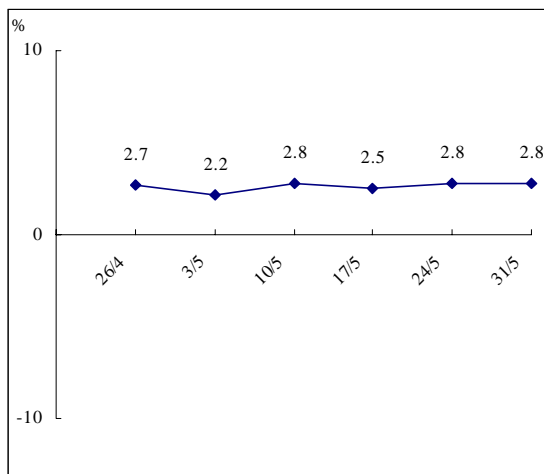
航空公司
Airline



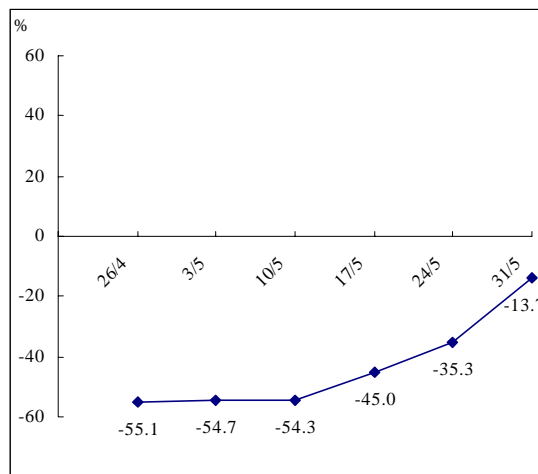
的士公司
Taxi companies



清潔及同類服務
Sanitary and similar services

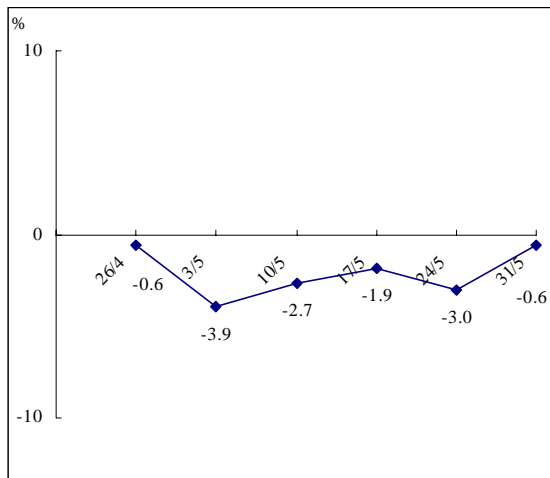


電影院
Cinemas and movie theatres

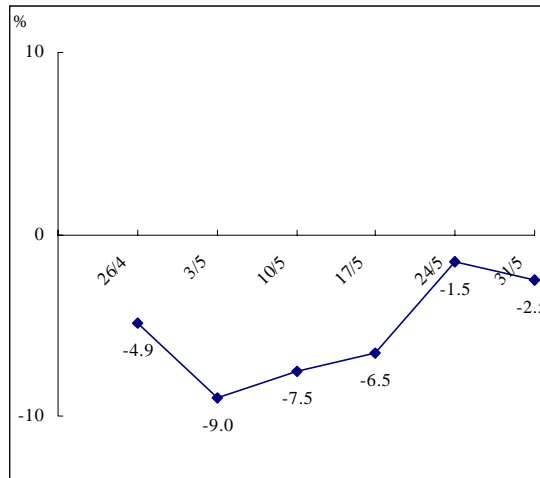


圖一甲（續）：按行業劃分的公司目前業務收益與正常情況比較的每周平均變動百分比
 Chart 1A (Cont'd) : Weekly Average % Change in Current Business Receipts of Companies as Compared with the Normal Situation by Sector

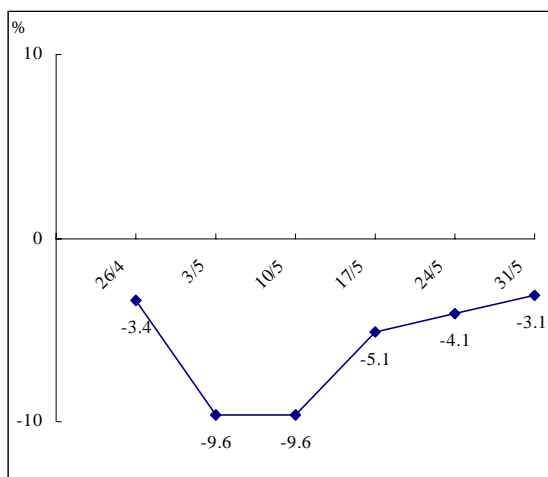
保險業
Insurance



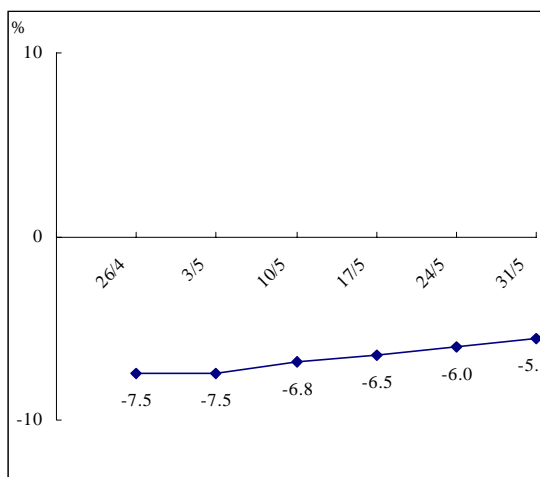
地產代理
Real estate agencies



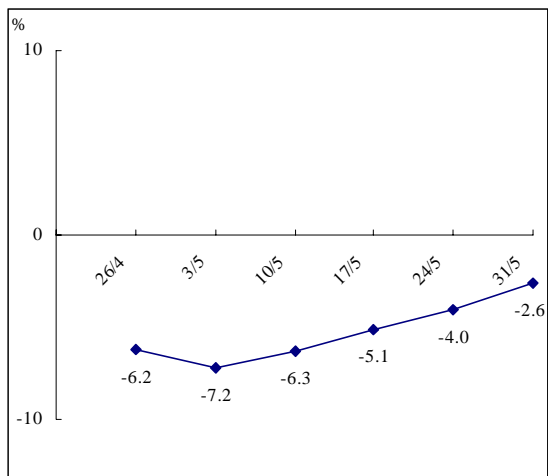
地產發展商
Real estate developers



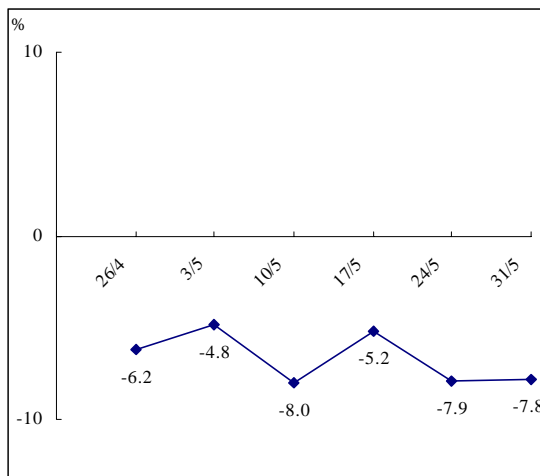
修葺及保養工程（包括供水管鋪設）
Repair and maintenance (incl. water plumbing)



進出口貿易業
Import/Export

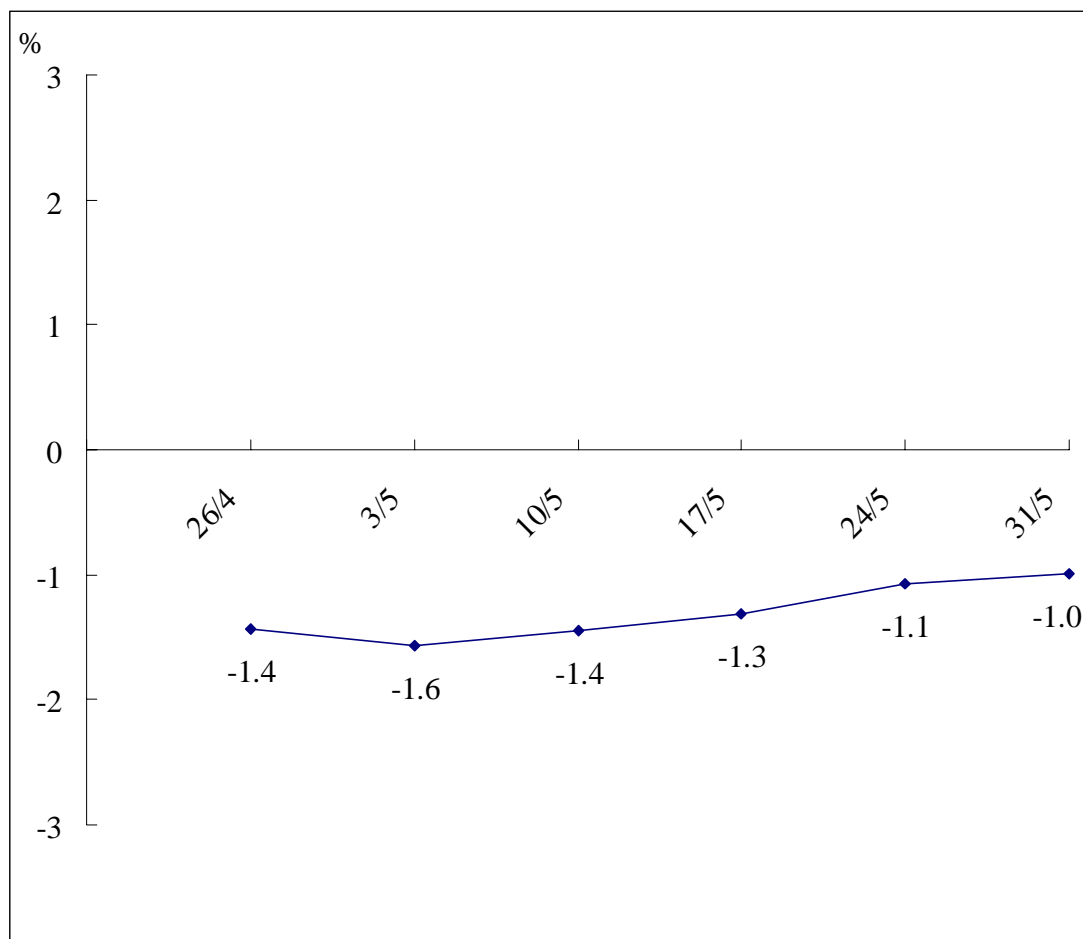


製造業
Manufacturing

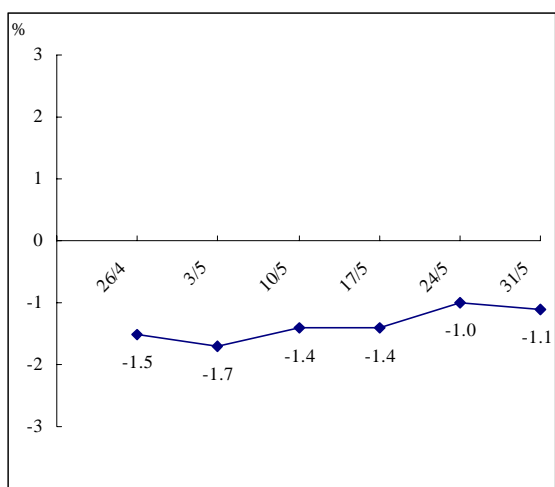


圖一乙：按行業劃分的公司目前就業人數與正常情況比較的每周平均變動百分比
Chart 1B : Weekly Average % Change in Current Employment of Companies as Compared with the Normal Situation by Sector

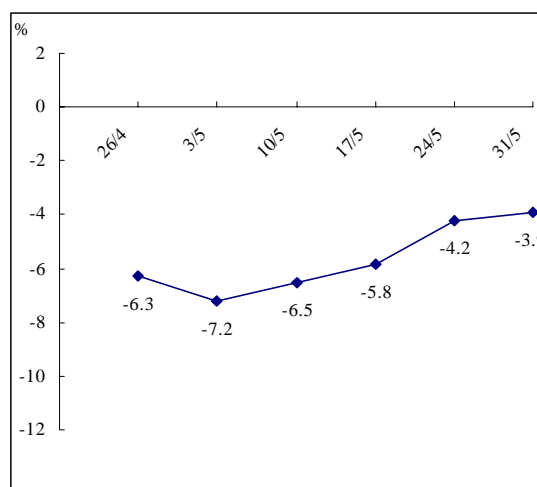
包括所有的諮詢行業
 All sectors included in the consultation



零售業
 Retail

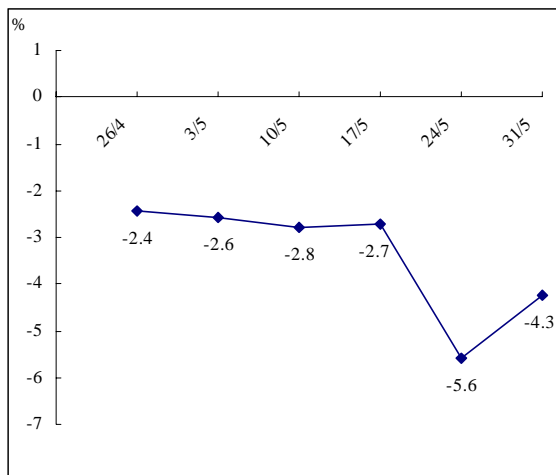


飲食業
 Restaurants

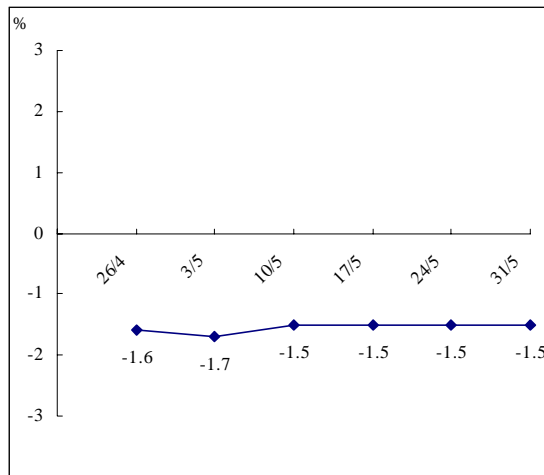


圖一乙 (續) : 按行業劃分的公司目前就業人數與正常情況比較的每周平均變動百分比
 Chart 1B (Cont'd) : Weekly Average % Change in Current Employment of Companies as Compared with the Normal Situation by Sector

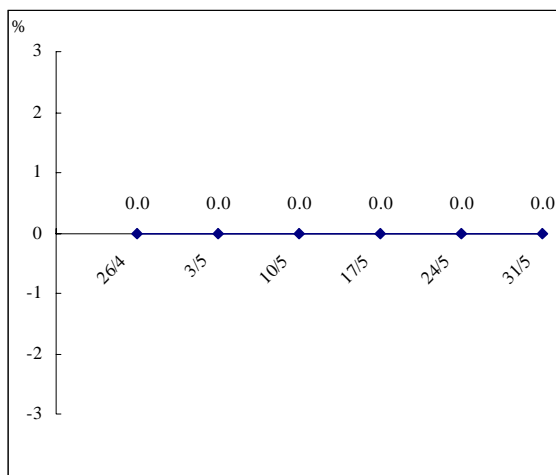
酒店業
Hotels



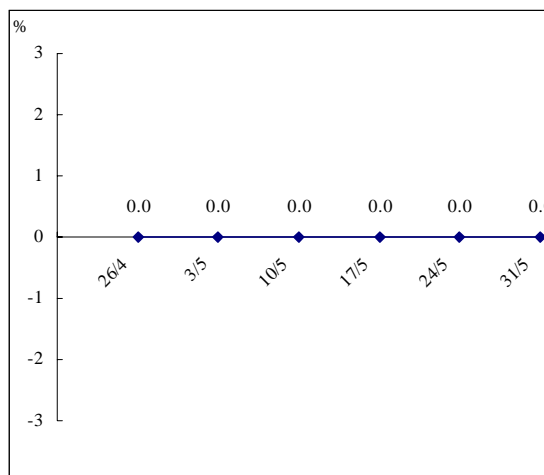
旅行社及票務代理
Travel agents and airline ticket agents



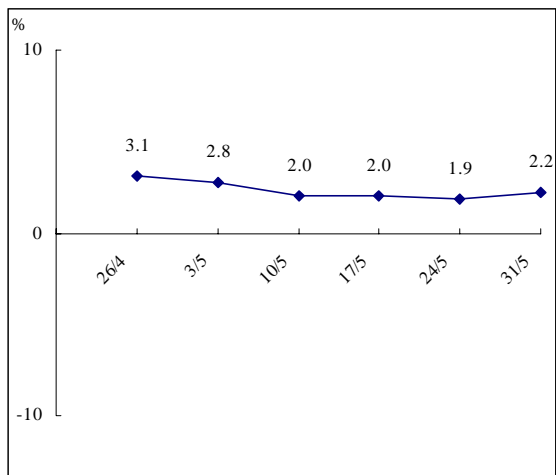
航空公司
Airline



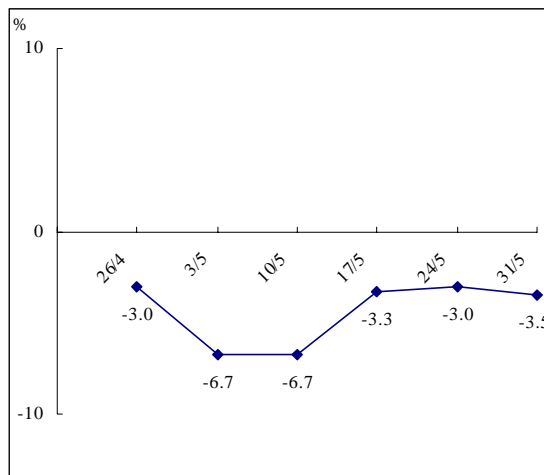
的士公司
Taxi companies



清潔及同類服務
Sanitary and similar services

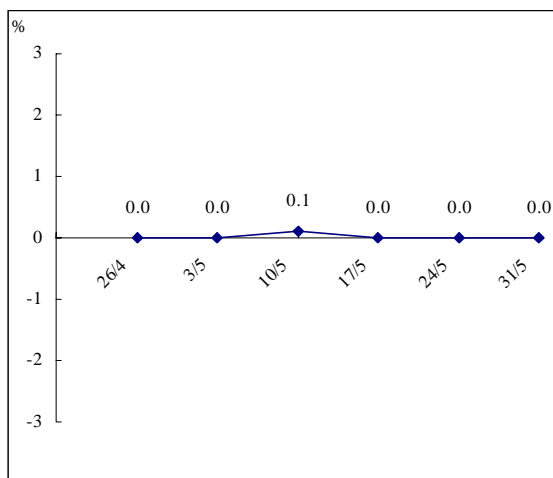


電影院
Cinemas and movie theatres

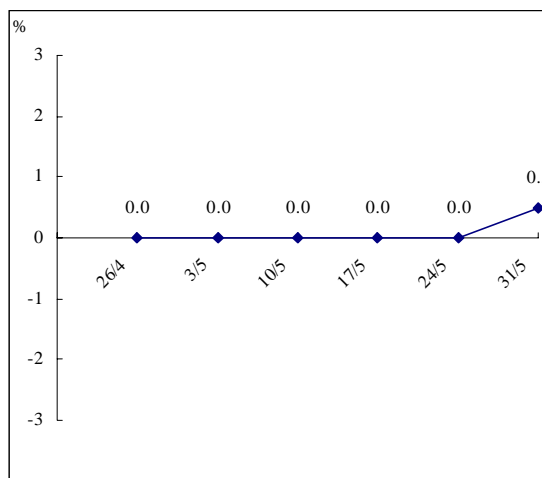


圖一乙（續）：按行業劃分的公司目前就業人數與正常情況比較的每周平均變動百分比
 Chart 1B (Cont'd) : Weekly Average % Change in Current Employment of Companies as Compared with the Normal Situation by Sector

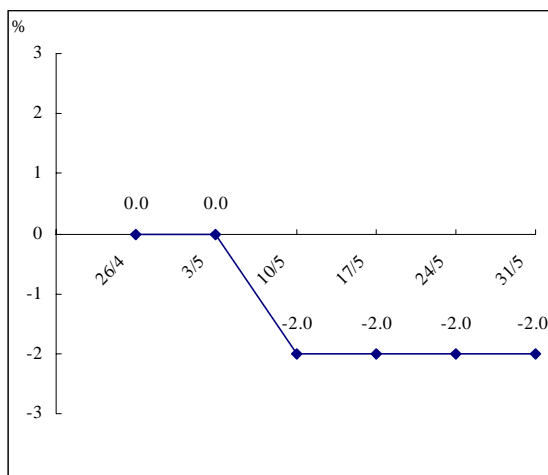
保險業
Insurance



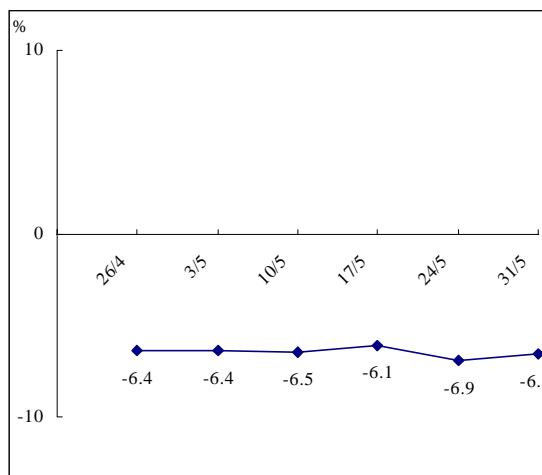
地產代理
Real estate agencies



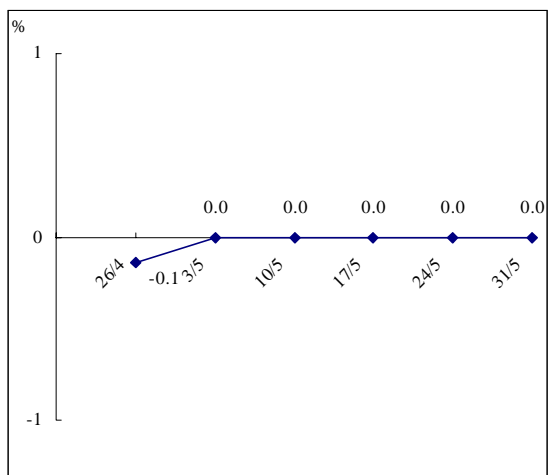
地產發展商
Real estate developers



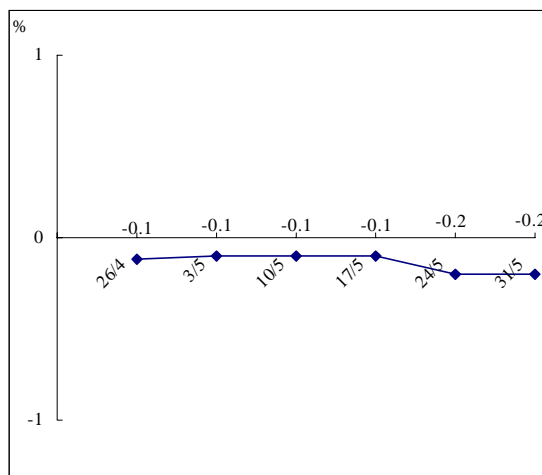
修葺及保養工程（包括供水管鋪設）
Repair and maintenance (incl. water plumbing)



進出口貿易業
Import/Export



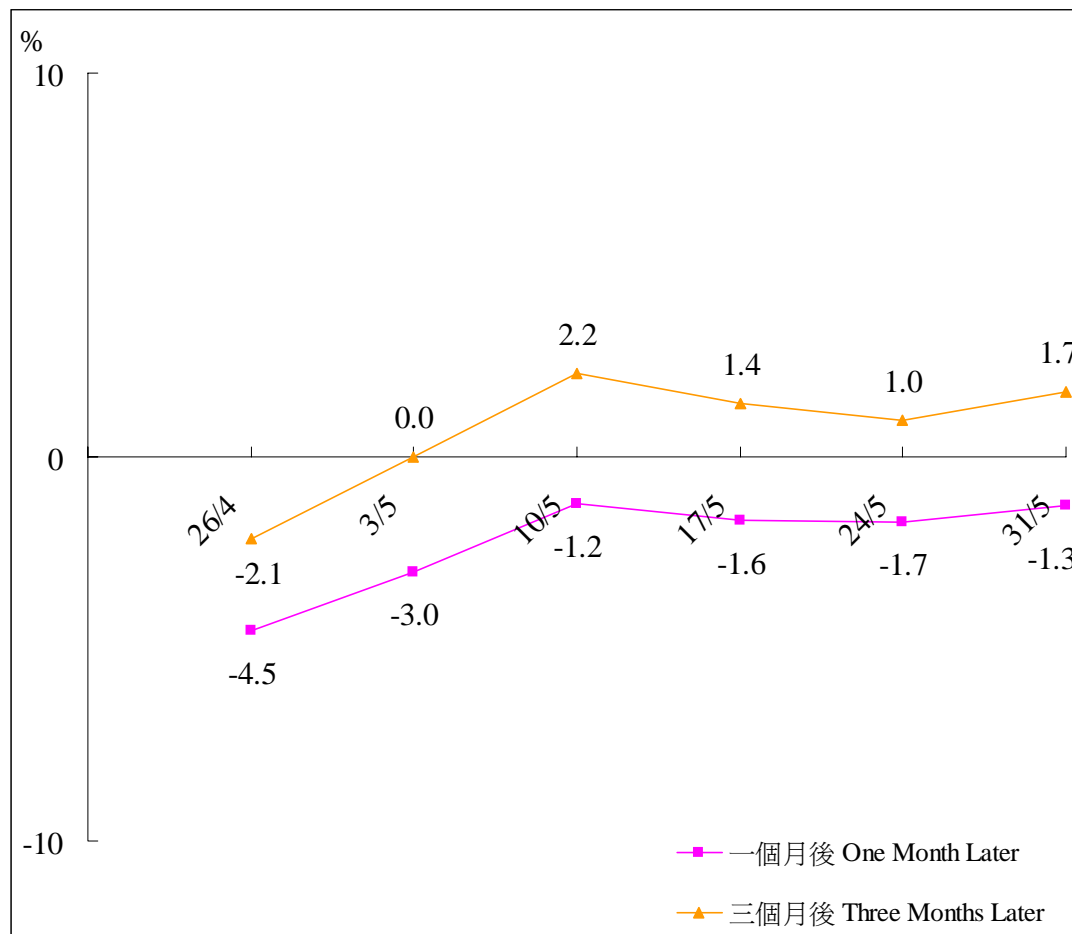
製造業
Manufacturing



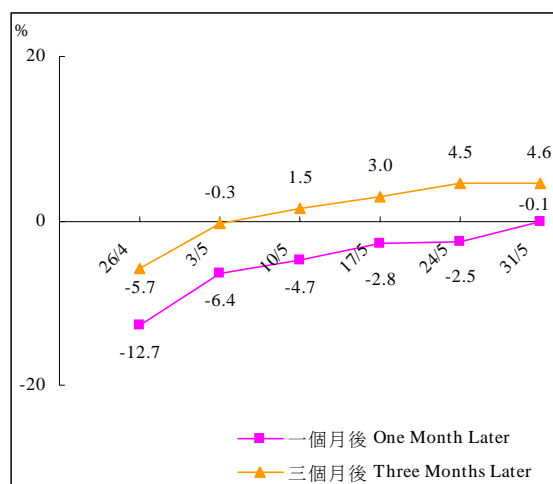
圖二甲：按行業劃分的公司未來一個月及三個月的業務收益與目前情況比較的每周平均變動百分比

Chart 2A : Weekly Average % Change in Business Receipts of Companies in One Month's Time and Three Months' Time as Compared with the Current Situation by Sector

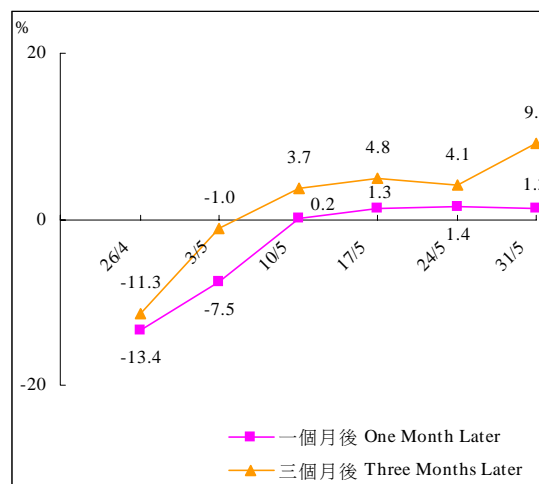
包括所有的諮詢行業
All sectors included in the consultation



零售業
Retail



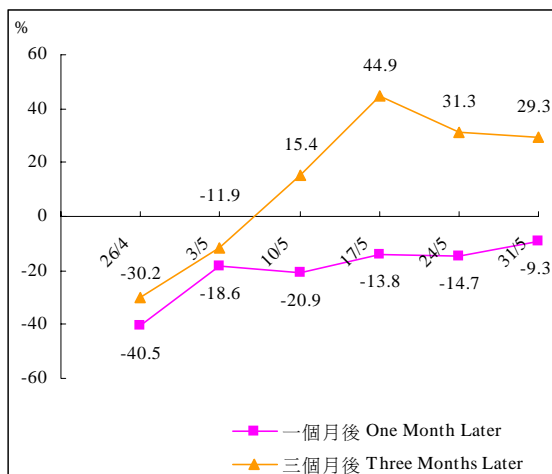
飲食業
Restaurants



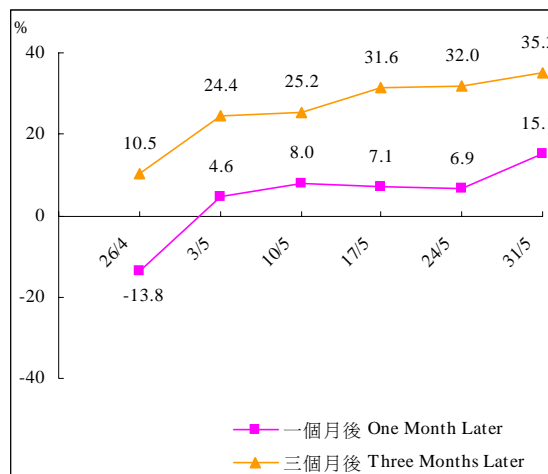
圖二甲（續）：按行業劃分的公司未來一個月及三個月的業務收益與目前情況比較的每周平均變動百分比

Chart 2A (Cont'd) : Weekly Average % Change in Business Receipts of Companies in One Month's Time and Three Months' Time as Compared with the Current Situation by Sector

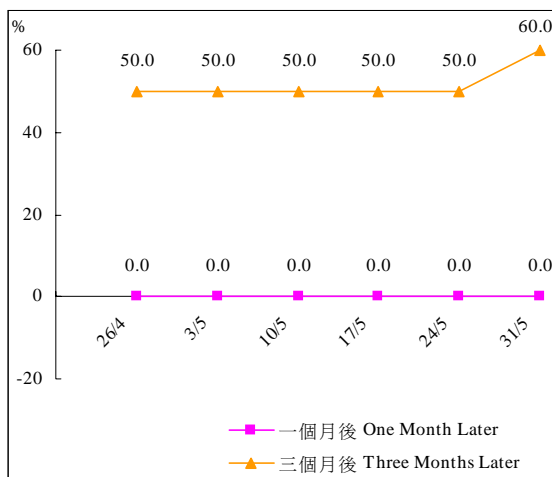
酒店業
Hotels



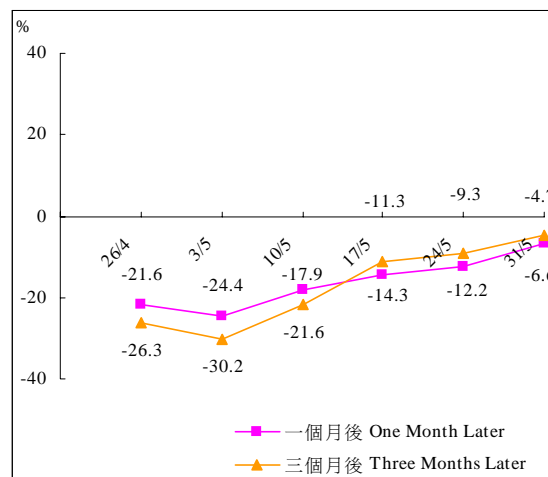
旅行社及票務代理
Travel agents and airline ticket agents



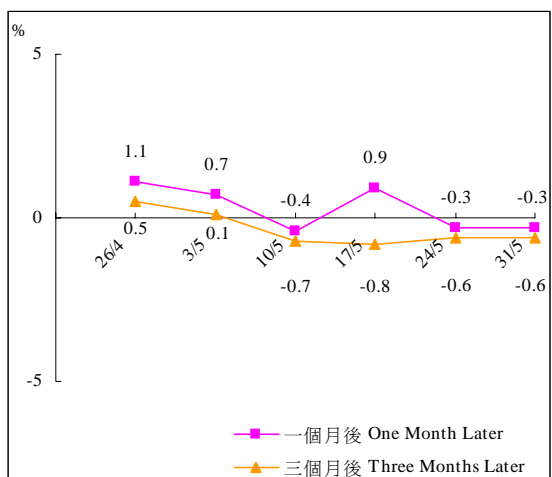
航空公司
Airline



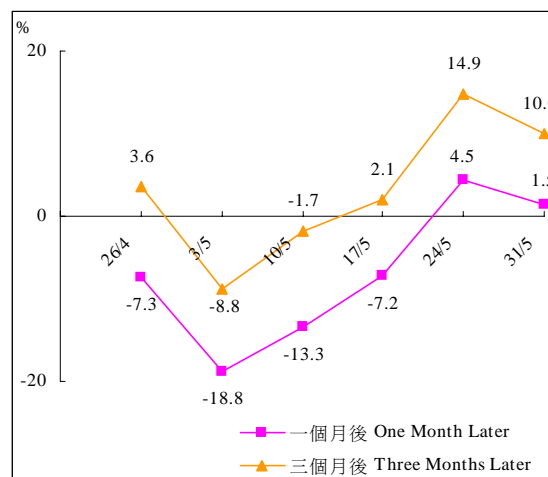
的士公司
Taxi companies



清潔及同類服務
Sanitary and similar services



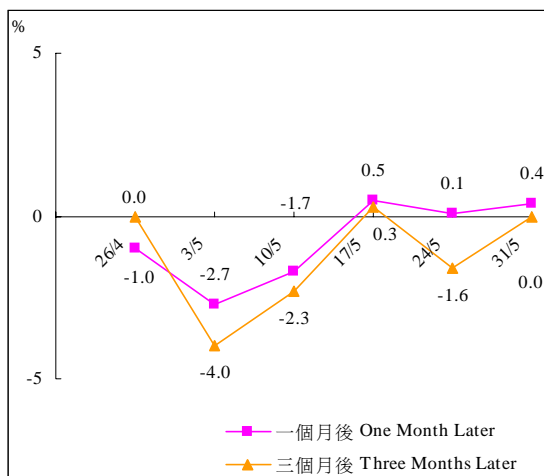
電影院
Cinemas and movie theatres



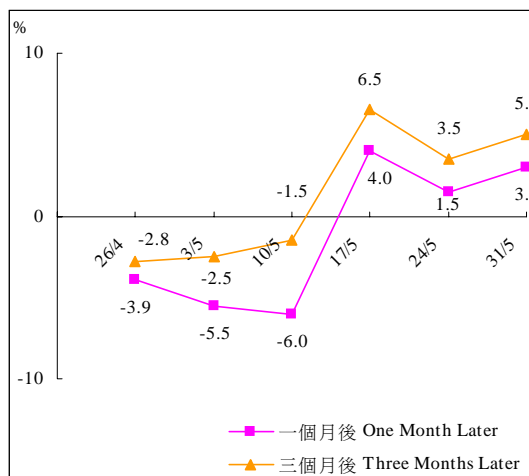
圖二甲（續）：按行業劃分的公司未來一個月及三個月的業務收益與目前情況比較的每周平均變動百分比

Chart 2A (Cont'd) : Weekly Average % Change in Business Receipts of Companies in One Month's Time and Three Months' Time as Compared with the Current Situation by Sector

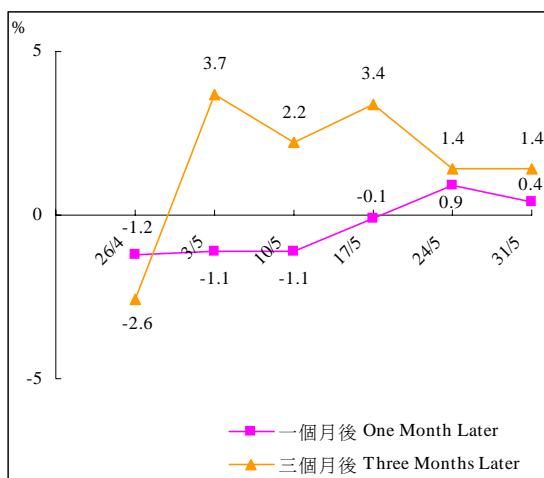
保險業
Insurance



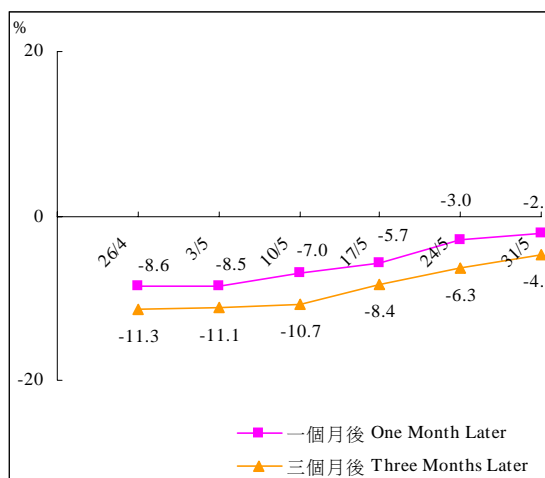
地產代理
Real estate agencies



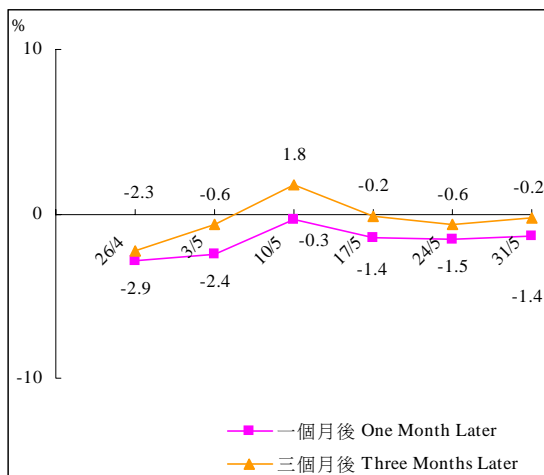
地產發展商
Real estate developers



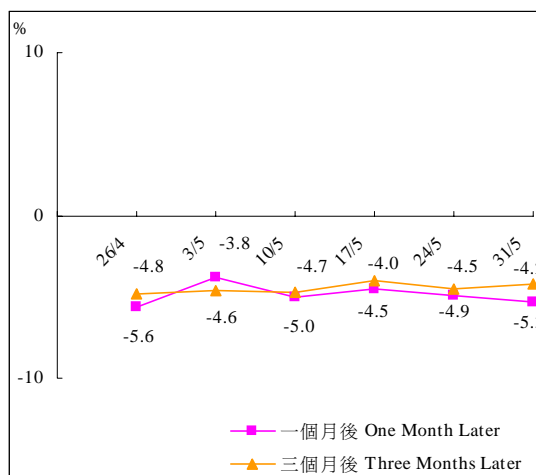
修葺及保養工程（包括供水管鋪設）
Repair and maintenance (incl. water plumbing)



進出口貿易業
Import/Export



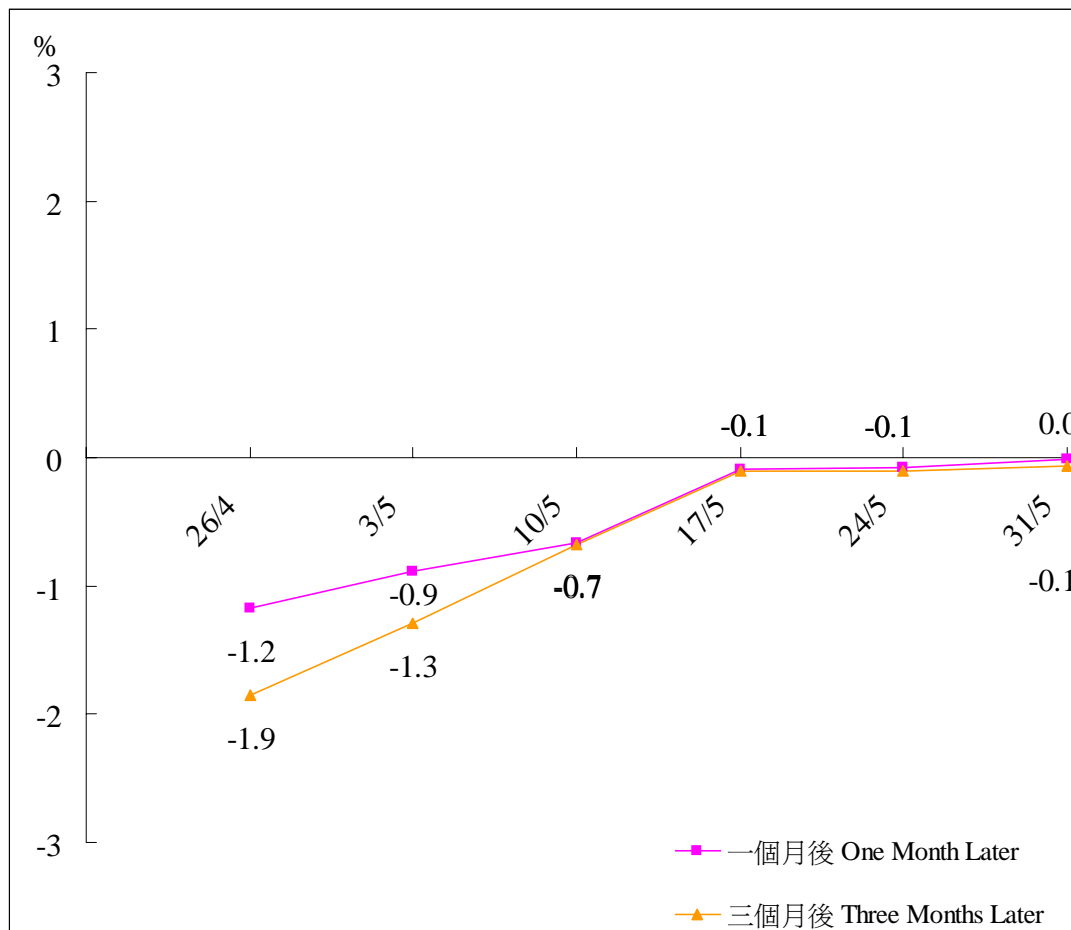
製造業
Manufacturing



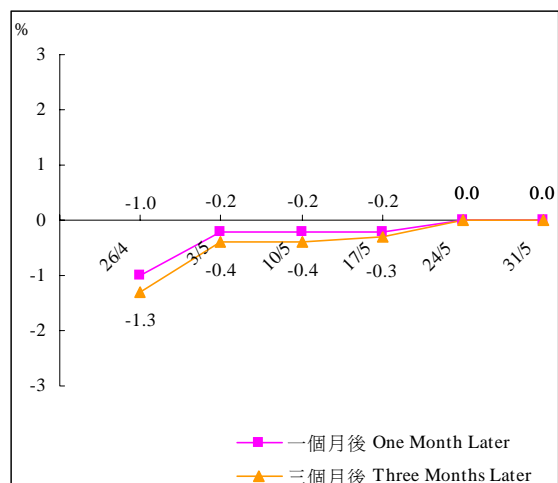
圖二乙：按行業劃分的公司未來一個月及三個月就業人數與目前情況比較的每周平均變動百分比

Chart 2B : Weekly Average % Change in Employment of Companies in One Month's Time and Three Months' Time as Compared with the Current Situation by Sector

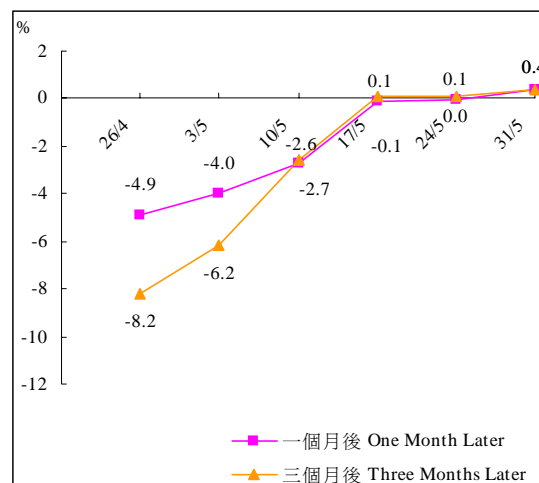
包括所有的諮詢行業
All sectors included in the consultation



零售業
Retail



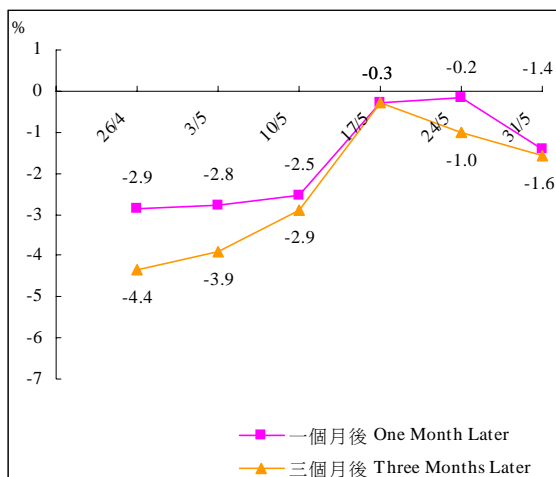
飲食業
Restaurants



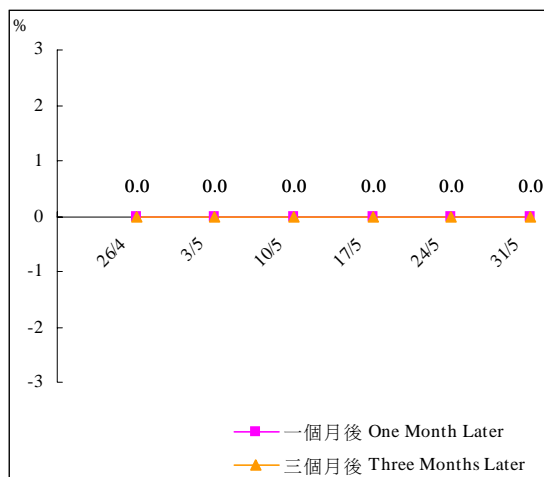
圖二乙 (續) : 按行業劃分的公司未來一個月及三個月的就業人數與目前情況比較的每周平均變動百分比

Chart 2B (Cont'd) : Weekly Average % Change in Employment of Companies in One Month's Time and Three Months' Time as Compared with the Current Situation by Sector

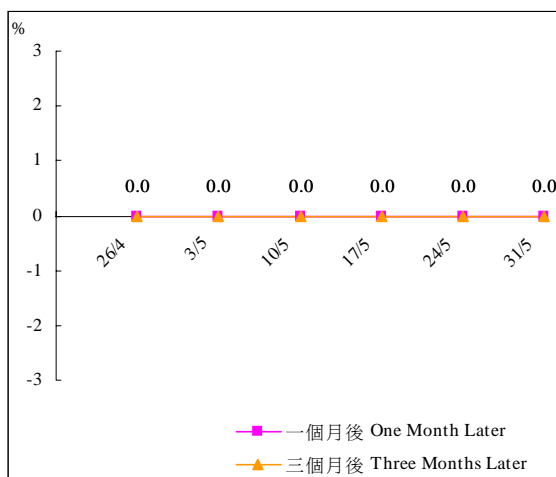
酒店業
Hotels



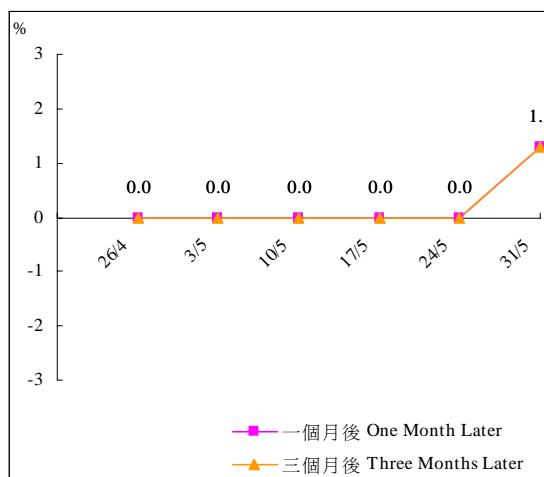
旅行社及票務代理
Travel agents and airline ticket agents



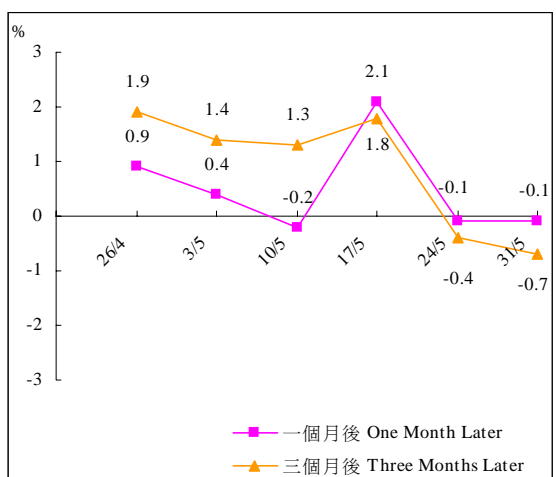
航空公司
Airline



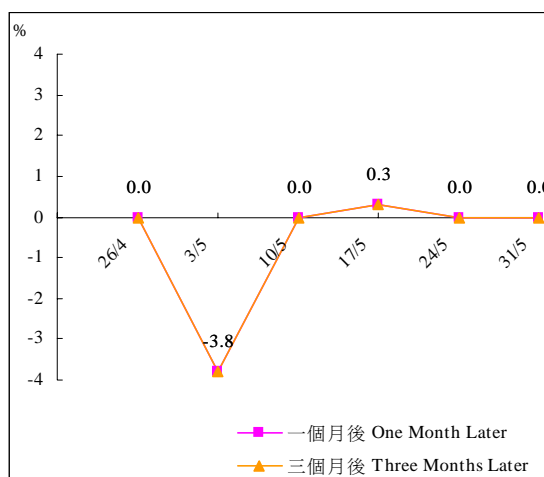
的士公司
Taxi companies



清潔及同類服務
Sanitary and similar services



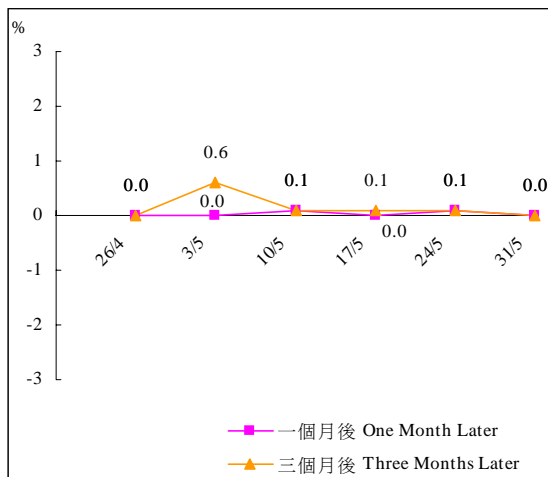
電影院
Cinemas and movie theatres



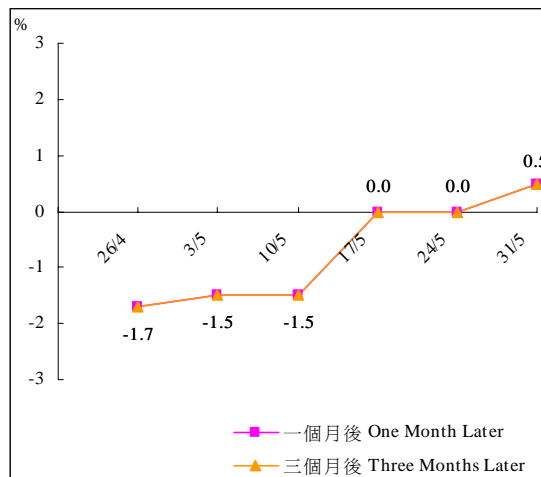
圖二乙（續）：按行業劃分的公司未來一個月及三個月的就業人數與目前情況比較的每周平均變動百分比

Chart 2B (Cont'd) : Weekly Average % Change in Employment of Companies in One Month's Time and Three Months' Time as Compared with the Current Situation by Sector

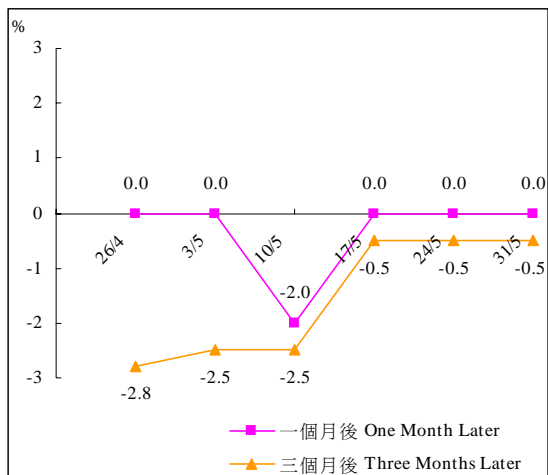
保險業
Insurance



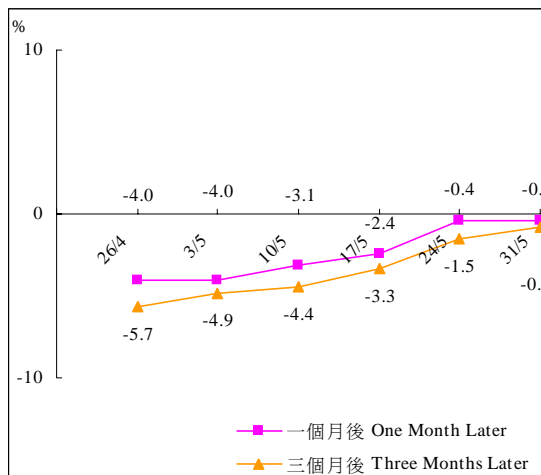
地產代理
Real estate agencies



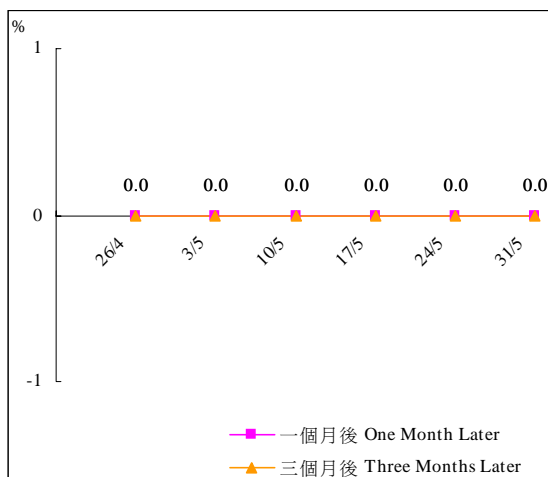
地產發展商
Real estate developers



修葺及保養工程（包括供水管鋪設）
Repair and maintenance (incl. water plumbing)



進出口貿易業
Import/Export



製造業
Manufacturing

