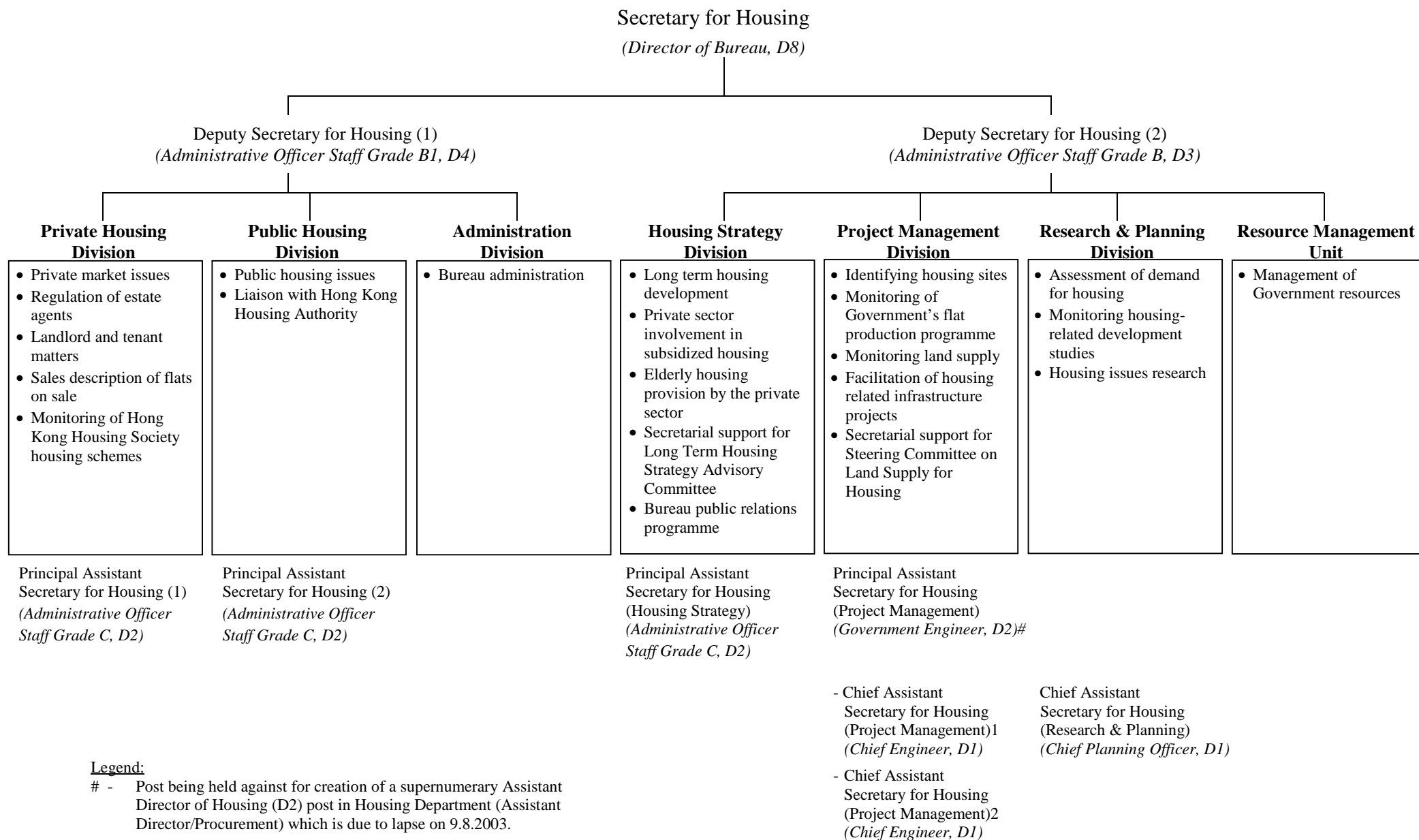
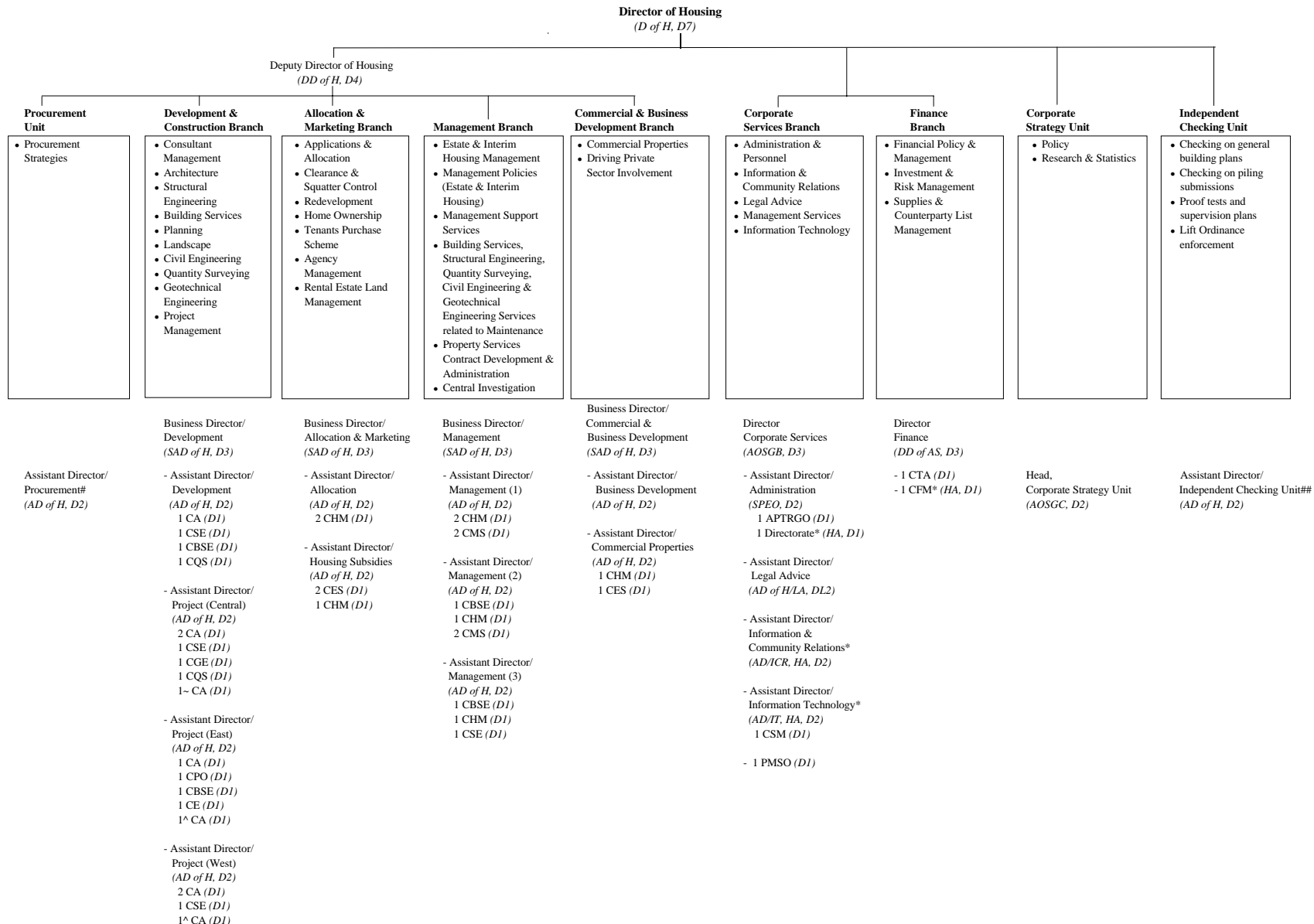


Organization chart of the former Housing Bureau



Organization chart of the former Housing Department



Legends:

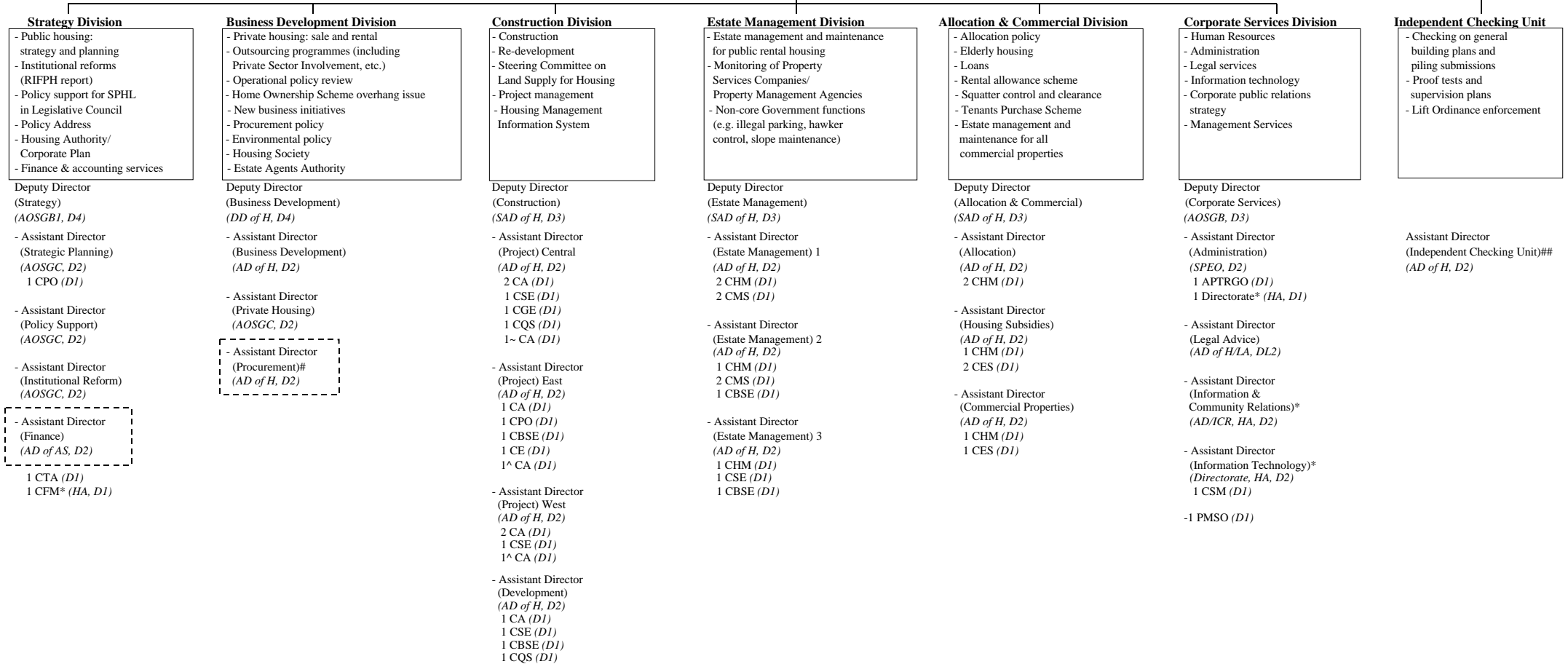
*	Housing Authority contract posts	SAD of H	Senior Assistant Director of Housing	CES	Chief Estate Surveyor
#	Supernumerary post (by holding against a Government Engineer (D2) post in the former Housing Bureau) to lapse on 9.8.2003	AD of H	Assistant Director of Housing	CFM	Chief Finance Manager
##	Supernumerary post to lapse on 15.7.2004	AD of H/LA	Assistant Director of Housing/Legal Advice	CGE	Chief Geotechnical Engineer
^	Multi-disciplinary supernumerary CA (D1) posts open to all building disciplines will lapse on 20.3.2003	DD of AS	Deputy Director of Accounting Services	CHM	Chief Housing Manager
~	Multi-disciplinary CA (D1) post open to all building disciplines	SPEO	Senior Principal Executive Officer	CMS	Chief Maintenance Surveyor
HA	Housing Authority	AD/ICR	Assistant Director/Information & Community Relations	CPO	Chief Planning Officer
AOSGB	Administrative Officer Staff Grade B	AD/IT	Assistant Director/Information Technology	CQS	Chief Quantity Surveyor
AOSGC	Administrative Officer Staff Grade C	APTRGO	Assistant Principal Training Officer	CSE	Chief Structural Engineer
DD of H	Deputy Director of Housing	CA	Chief Architect	CSM	Chief Systems Manager
		CBSE	Chief Building Services Engineer	CTA	Chief Treasury Accountant
		CE	Chief Engineer	PMSO	Principal Management Services Officer

Proposed organization structure of the Housing Department

Secretary for Housing, Planning and Lands

AA/Secretary for Housing, Planning and Lands (AOSGC, D2)/non-civil service position at D2-equivalent

Permanent Secretary for Housing, Planning and Lands (Housing)/Director of Housing
(AOSGA1, D8)



Legends:

AOSGA1 - Administrative Officer Staff Grade A1
 AOSGB1 - Administrative Officer Staff Grade B1
 AOSGB - Administrative Officer Staff Grade B
 AOSGC - Administrative Officer Staff Grade C
 DD of H - Deputy Director of Housing
 SAD of H - Senior Assistant Director of Housing
 AD of H - Assistant Director of Housing
 AD of AS - Assistant Director of Accounting Services
 SPEO - Senior Principal Executive Officer
 AD/ICR - Assistant Director/Information & Community Relations
 APTRGO - Assistant Principal Training Officer
 CA - Chief Architect

CBSE - Chief Building Services Engineer
 CE - Chief Engineer
 CES - Chief Estate Surveyor
 CFM - Chief Finance Manager
 CGE - Chief Geotechnical Engineer
 CHM - Chief Housing Manager
 CMS - Chief Maintenance Surveyor
 CPO - Chief Planning Officer
 CQS - Chief Quantity Surveyor
 CSE - Chief Structural Engineer
 CSM - Chief Systems Manager
 CTA - Chief Treasury Accountant

PMSO - Principal Management Services Officer
 HA - Housing Authority
 LA - Legal Advice
 * - Housing Authority contract posts
 # - Supernumerary post to lapse on 9.8.2003 and is now proposed to be made permanent w.e.f. 1.1.2003
 ## - Supernumerary post to lapse on 15.7.2004
 ^ - Multi-disciplinary supernumerary CA (D1) posts open to all building disciplines will lapse on 20.3.2003
 ~ - Multi-disciplinary CA (D1) post open to all building disciplines
 [- Posts proposed for creation