

香港特別行政區政府
The Government of the Hong Kong Special Administrative Region

政府總部
環境運輸及工務局
香港花園道美利大廈



Environment, Transport
and Works Bureau
Government Secretariat
Murray Building, Garden Road,
Hong Kong

本局檔號 Our Ref. ETWB(IR) 310/9/01(02)

Tel. No. 2848 2288

來函檔號 Your Ref. CB1/PL/PLW

Fax. No. 2189 7990

2 December 2003

Clerk to Panel on Planning, Lands and Works,
Legislative Council,
Legislative Council Building,
8 Jackson Road, Central,
Hong Kong.
(Attn.: Ms Anita SIT)

Dear Ms Sit,

**Panel on Planning, Lands and Works and Panel on Manpower
Follow-up to joint meeting on 25 November 2003**

Thank you for your letter dated 28 November 2003.

As requested, I attach for your information the following documents in both English and Chinese -

- (a) a proposed co-ordination framework for local construction set out in Annex G to the report entitled "Construct for Excellence" published by the Construction Industry Review Committee in January 2001; and
- (b) an organization chart showing the working groups, sub-groups and task forces underpinning the Provisional Construction Industry Co-ordination Board.

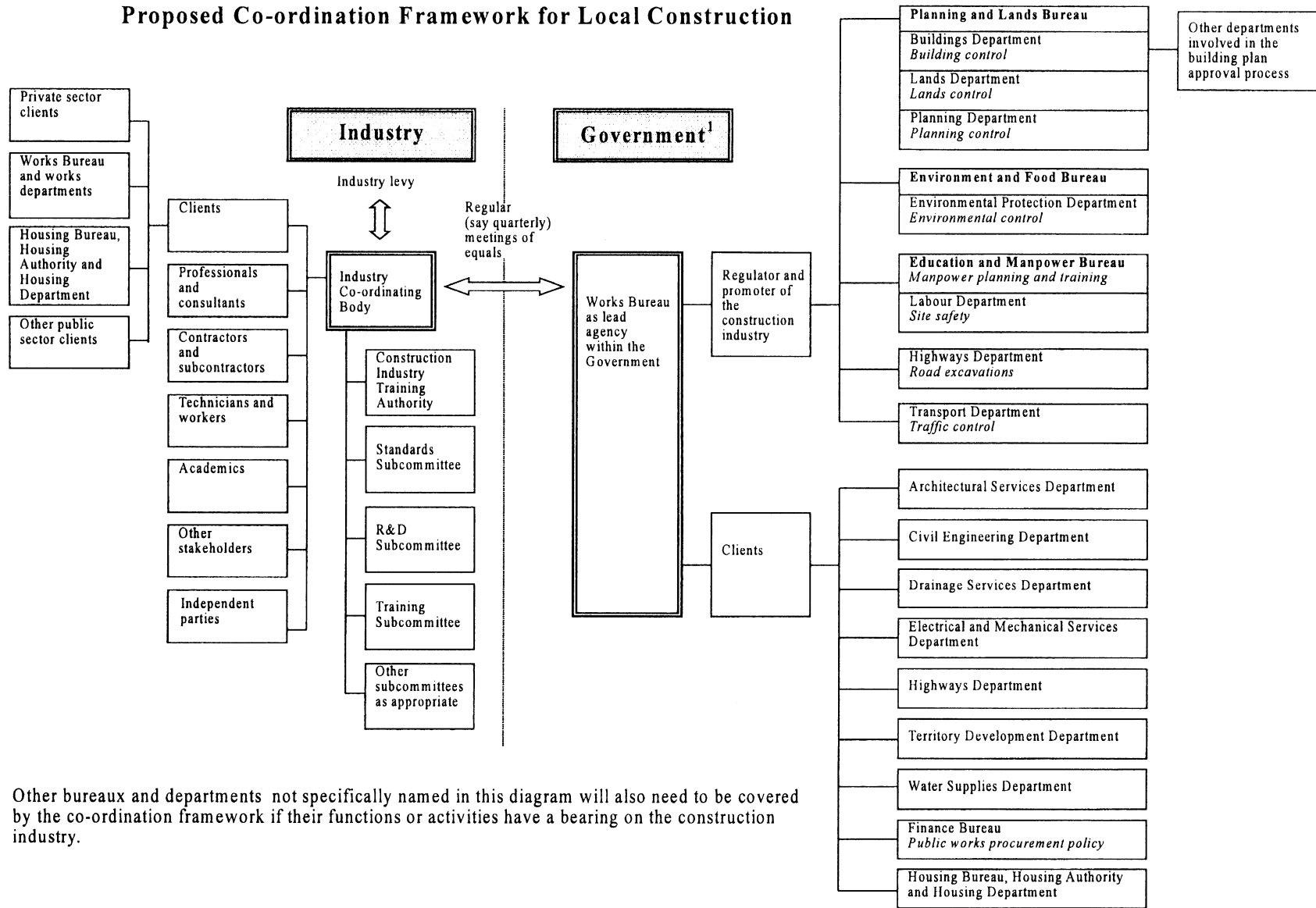
A soft copy of the above documents has also been sent by e-mail to Ms Christina Shiu.

Yours sincerely,

A handwritten signature in black ink, consisting of a large, stylized initial 'C' followed by several overlapping, cursive strokes.

(Clement Cheung)
for Secretary for the Environment,
Transport and Works

Proposed Co-ordination Framework for Local Construction



¹ Other bureaux and departments not specifically named in this diagram will also need to be covered by the co-ordination framework if their functions or activities have a bearing on the construction industry.

Organisation Chart of the Provisional Construction Industry Co-ordination Board (PCICB)
(as at 1 December 2003)

