

For information

Legislative Council Panel on Transport

**Supplementary Information on
323TH – Reconstruction of Causeway Bay Flyover and
associated widening of Victoria Park Road**

BACKGROUND

At its meeting on 24 October 2003, Members of the Panel noted paper CB(1)121/03-04(01) which sets out our proposal to upgrade **323TH** – Reconstruction of Causeway Bay Flyover (CBF) and associated widening of Victoria Park Road (VPR) to Category A to carry out the reconstruction of CBF and associated widening of VPR. Members supported the proposal but have requested supplementary information on the temporary traffic arrangements during the construction works.

TEMPORARY TRAFFIC ARRANGEMENT

Sequence of construction

2. The construction works are scheduled for completion in about 40 months and to be implemented in the following eight stages :

Stage 1 : Foundation works for the new CBF abutment within the Victoria Park and the footbridge;

Stage 2 : Construction of temporary roads for traffic diversion, the footbridge and abutment within the Victoria Park;

Stage 3 : Construction of the temporary ramp of the new CBF within the Victoria Park;

Stage 4 : Demolition of the abutment of the existing CBF within the Victoria Park;

Stage 5 : Construction of the new CBF from the Gloucester Road to the Victoria Park;

Stage 6 : Demolition of the abutment of the existing CBF along the Gloucester Road;

Stage 7 : Demolition of the existing CBF and temporary ramp of the new CBF; and

Stage 8 : Realignment of the Victoria Park Road eastbound, widening of the Victoria Park Road westbound and reinstatement works for all the landscape areas.

Plans showing the stages of construction are at **Enclosures 1 to 8**.

Maintaining the existing traffic movement during construction

3. While details of the temporary traffic arrangements will be finalized by the Contractor of the project, we will specify in the tender documents the requirement to maintain existing traffic movement during the construction works. Our current plan on the temporary traffic arrangements is to shift the affected traffic lanes of the VPR eastbound onto the existing Causeway Bay Promenade so as to maintain the existing three traffic lanes. We will also maintain the existing traffic movement at the CBF by providing a temporary ramp within the Victoria Park. The proposed traffic diversion scheme is at **Enclosure 9**. We will retain the pavement and service lane at Causeway Bay Promenade during construction so as to maintain access to the Promenade.

4. With the implementation of the temporary traffic arrangements, we expect that the traffic impact arising from the project will be minimal.

Advice Sought

5. Members are invited to note the content of this paper.

Environment, Transport and Works Bureau
October 2003



Causeway Bay Typhoon Shelter
 避風塘

Victoria Park Road
 維多利亞公園道

CAUSEWAY BAY FLYOVER
 橋

GLOUCESTER ROAD FLYOVER WIDENING
 橋

Tong Lo Wan Garden
 東龍苑公園

Victoria Park
 維多利亞公園

CONSTRUCTION OF
 FOOTBRIDGE FOUNDATION
 建造的人行天橋地基

CONSTRUCTION OF
 FOOTBRIDGE FOUNDATION
 建造的人行天橋地基

FLYOVER ABUTMENT
 WITHIN VICTORIA PARK
 維多利亞公園內的橋台

LEGEND 圖例

CONSTRUCTION
 建設工程

Sequence of Construction 施工程序
 (Page 1 of 8)

ROADS
 DEPARTMENT

工務計劃項目第 323TH 號
 銅鑼灣行人天橋重建及綠園道
 道路擴闊工程 - 施工程序一

PWP ITEM No. 323TH
 Reconstruction of Causeway Bay Flyover and Associated Widening of
 Victoria Park Road - Construction Works Stage 1

圖則一
 Enclosure 1



CONSTRUCTION OF TEMPORARY DIVERTED ROAD (EXISTING SERVICE LANE TO BE RETAINED)
 建造臨時改道
 (保留原有的內街行車道)

Causeway Bay Typhoon Shelter
 金鐘風暴潮避風塘

Victoria Park Road
 維多利亞公園道

CAUSEWAY BAY FLYOVER
 金鐘灣跨路橋

Tung Lo Wan Garden
 東龍灣花園

FLYOVER ABUTMENT WITHIN VICTORIA PARK
 維多利亞公園內的橋台



Victoria Park
 維多利亞公園

CONSTRUCTION OF FOOTBRIDGE
 建造的人行天橋

LEGEND 圖例

 CONSTRUCTION
 建築工程

Sequence of Construction 施工程序
 (Page 2 of 8)

 HIGHWAYS
 DEPARTMENT

工務計劃項目第 323TH 號
 銅鑼灣行人天橋重建及修護道
 道路擴闊工程 - 施工程序二

PWP ITEM No. 323TH
 Reconstruction of Causeway Bay Flyover and Associated Widening of
 Victoria Park Road - Construction Works Stage 2

附圖 11
 Enclosure 2



Causeway Bay Typhoon Shelter
 避風塘

CONCRETE BAY FLYOVER STRUCTURE
 混凝土飛越橋結構

Tung Lo Wan Garden
 東龍灣花園

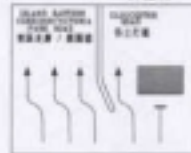
Victoria Park
 維多利亞公園

TEMPORARY RAMP
 臨時引道

PERMANENT RAMP OF THE NEW COP
 新制圍欄天橋的永久橋台

LEGEND 圖例

- TS109 CONSTRUCTION 建造工程
- TS416 DEMOLITION 拆卸工程
- TS421 WORKS AREA 施工區
- TS767 CONCRETE BARRIER WITH FLASHING LIGHTS 有閃燈的三合土防撞欄



TEMPORARY SOON A
 臨時交通標誌 A

Sequence of Construction 施工程序
 (Page 3 of 8)

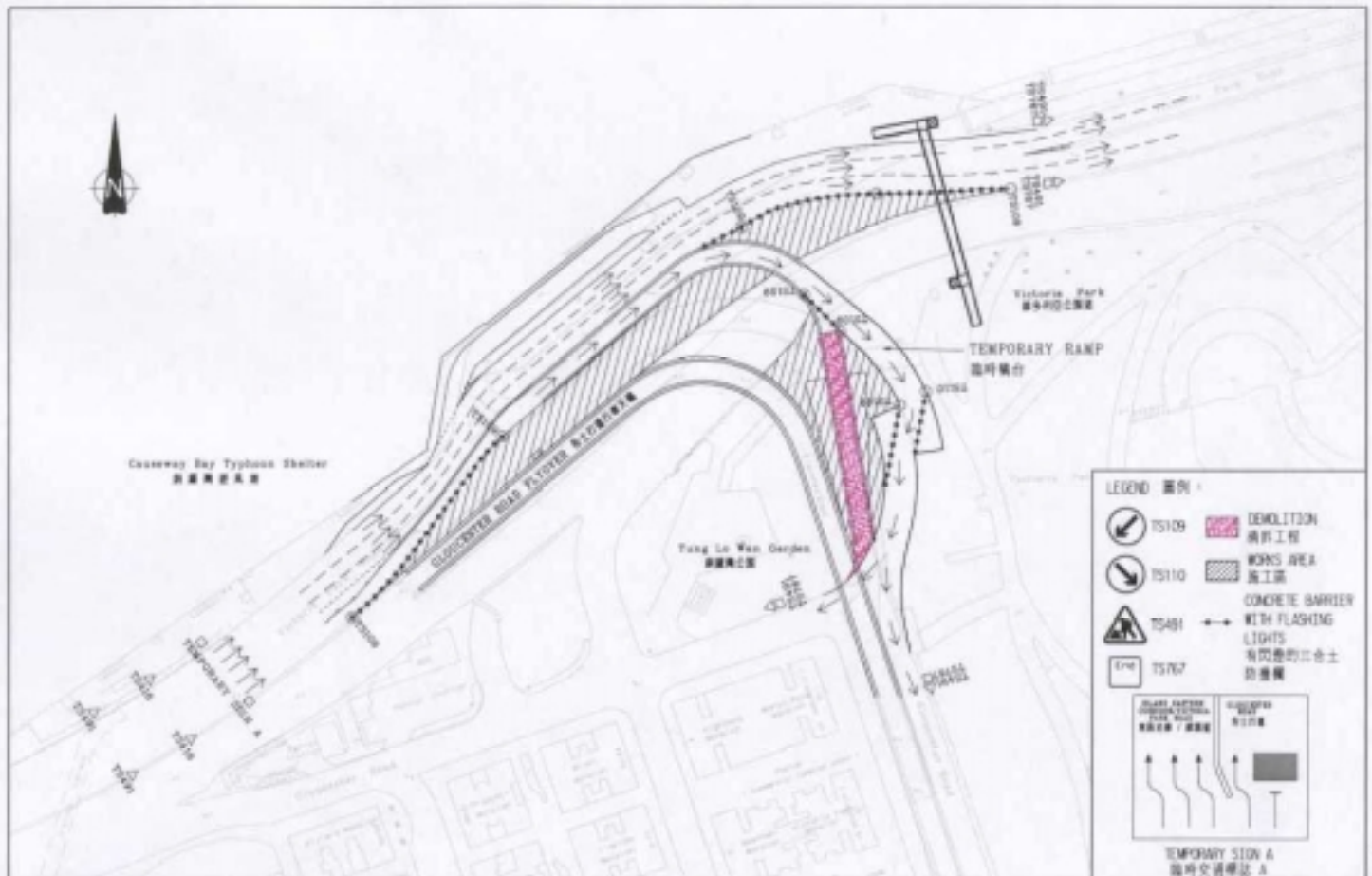
	HIGHWAYS	*
	DEPARTMENT	*

工務計劃項目第 323TH 號
 鋼鐵橋行車天橋重建及綠園道
 道路擴闊工程 - 施工程序三

PWP ITEM No. 323TH
 Reconstruction of Causeway Bay Flyover and Associated Widening of
 Victoria Park Road - Construction Works Stage 3



Causeway Bay Typhoon Shelter
 新填海盆



LEGEND 圖例

- TS109 DEMOLITION 拆卸工程
- TS110 WORKS AREA 施工區
- TS481 CONCRETE BARRIER WITH FLASHING LIGHTS 有閃燈的混凝土防撞欄
- TS767 防撞欄

TEMPORARY SIGN A 臨時交通標誌 A

Sequence of Construction 施工程序 (Page 4 of 8)

	ROADWORKS	■
	DEPARTMENT	■

工務計劃項目第 323TH 號
 新填海盆天橋重建及擴展
 道路擴闊工程 - 施工程序四

PWP ITEM No. 323TH
 Reconstruction of Causeway Bay Flyover and Associated Widening of
 Victoria Park Road - Construction Works Stage 4

Enclosure 4



Causeway Bay Typhoon Shelter
 避風塘

CAUSEWAY BAY FLYOVER
 橋

Tung Lo Wan Garden
 東龍灣花園

Victoria Park
 維多利亞公園

TEMPORARY RAMP
 臨時橋台

LEGEND 圖例

- TS109 CONSTRUCTION 建造工程
- TS110 WORKS AREA 施工區
- TS496 CONCRETE BARRIER WITH FLASHING LIGHTS 海閃燈的三合土防撞欄
- TS767 TEMPORARY SIGN A 臨時交通標誌 A

Sequence of Construction 施工程序
 (Page 5 of 80)

HIGHWAYS DEPARTMENT

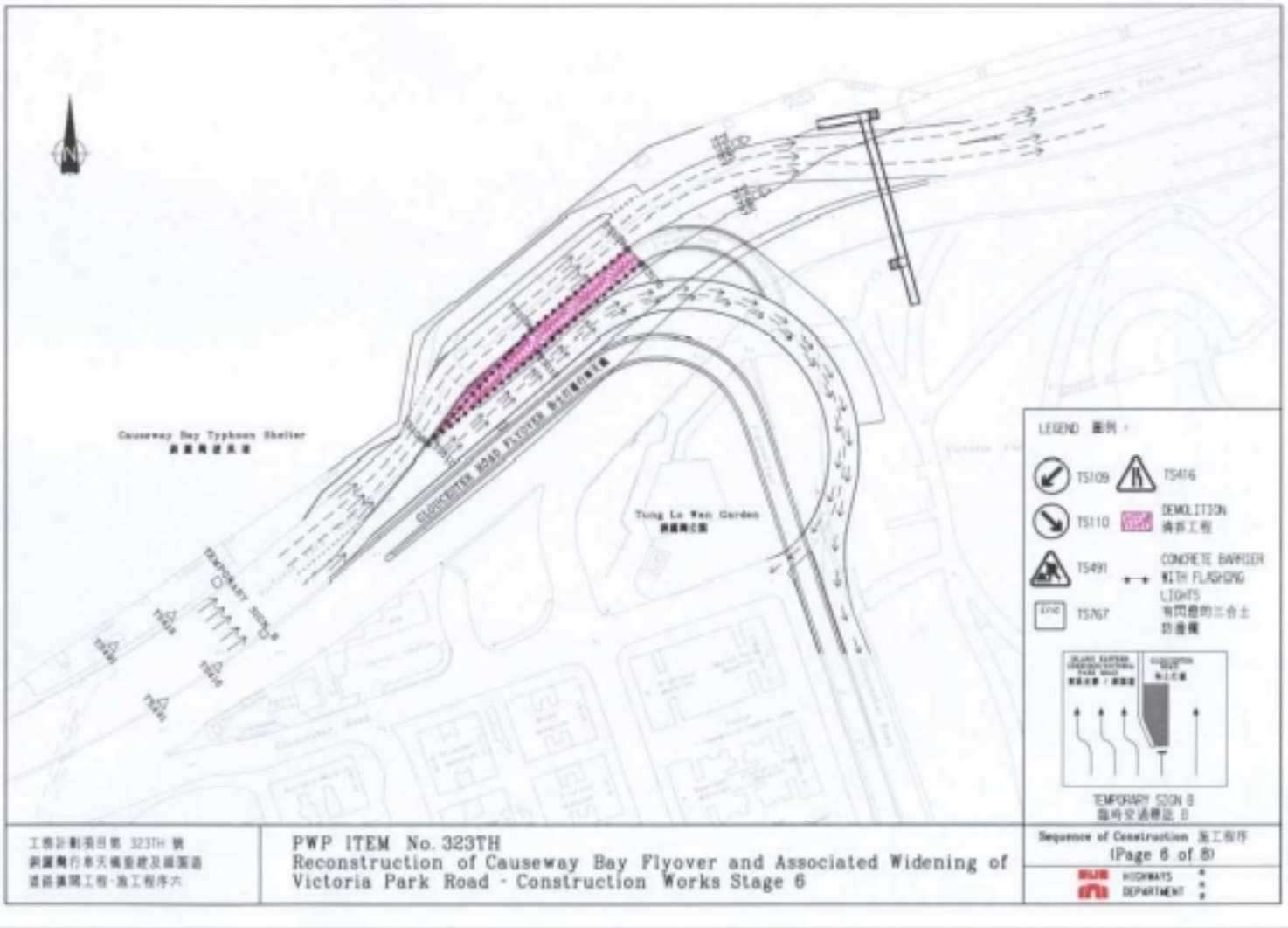
工務計劃項目第 323TH 號
 新運興行半天橋重建及擴闊道
 道路擴闊工程 - 施工程序 5

PWP ITEM No.323TH
 Reconstruction of Causeway Bay Flyover and Associated Widening of
 Victoria Park Road - Construction Works Stage 5

Sequence of Construction 施工程序
 (Page 5 of 80)

HIGHWAYS DEPARTMENT

Enclosure 5



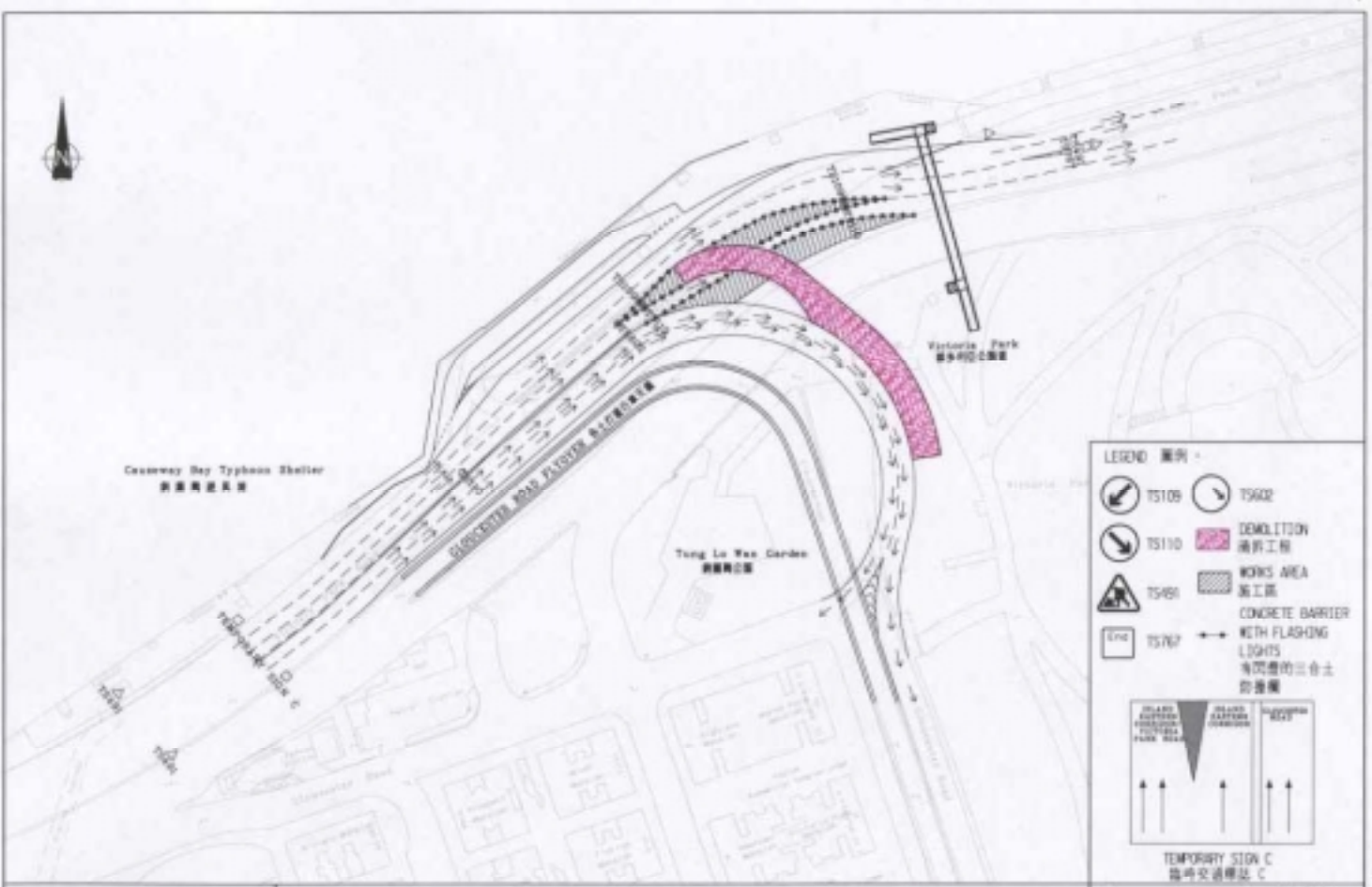
工務計劃項目號 323TH 號
 鋼筋橋行車天橋重建及擴闊道
 道修擴闊工程-第工程序六

PWP ITEM No. 323TH
 Reconstruction of Causeway Bay Flyover and Associated Widening of
 Victoria Park Road - Construction Works Stage 6

LEGEND 圖例

- TS109
- TS110
- TS491
- TS767
- DEMOLITION
清拆工程
- CONCRETE BARRIER
WITH FLASHING
LIGHTS
有閃燈的三合土
防撞欄
- TEMPORARY SIGN
臨時交通標誌

Sequence of Construction 第工程序
 (Page 6 of 8)
 HIGHWAYS DEPARTMENT



工務計劃項目第 323TH 號
 新填海行車天橋重建及擴闊道
 道路擴闊工程 - 施工程序七

PWP ITEM No. 323TH
Reconstruction of Causeway Bay Flyover and Associated Widening of
Victoria Park Road - Construction Works Stage 7

LEGEND 圖例

	TS105		TS602
	TS110		DEMOLITION 清拆工程
	TS450		WORKS AREA 施工區
	Line		CONCRETE BARRIER
	TS767		WITH FLASHING LIGHTS 有閃燈的三合土 防撞欄

TEMPORARY SIGN C
 臨時交通標誌 C

Sequence of Construction 施工程序
 (Page 7 of 8)

	ROADWORKS	+
	HIGHWAYS	+
	DEPARTMENT	+

Enclosure 7
圖七



Causeway Bay Typhoon Shelter
避風塘



NEW CAUSEWAY BAY FLYOVER
新避風塘飛路

GLoucester Road FLYOVER RECONSTRUCTION
高士街飛路重建

Tung Lo Man Garden
東龍苑

Victoria Park
維多利亞公園

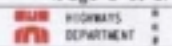
LEGEND 圖例

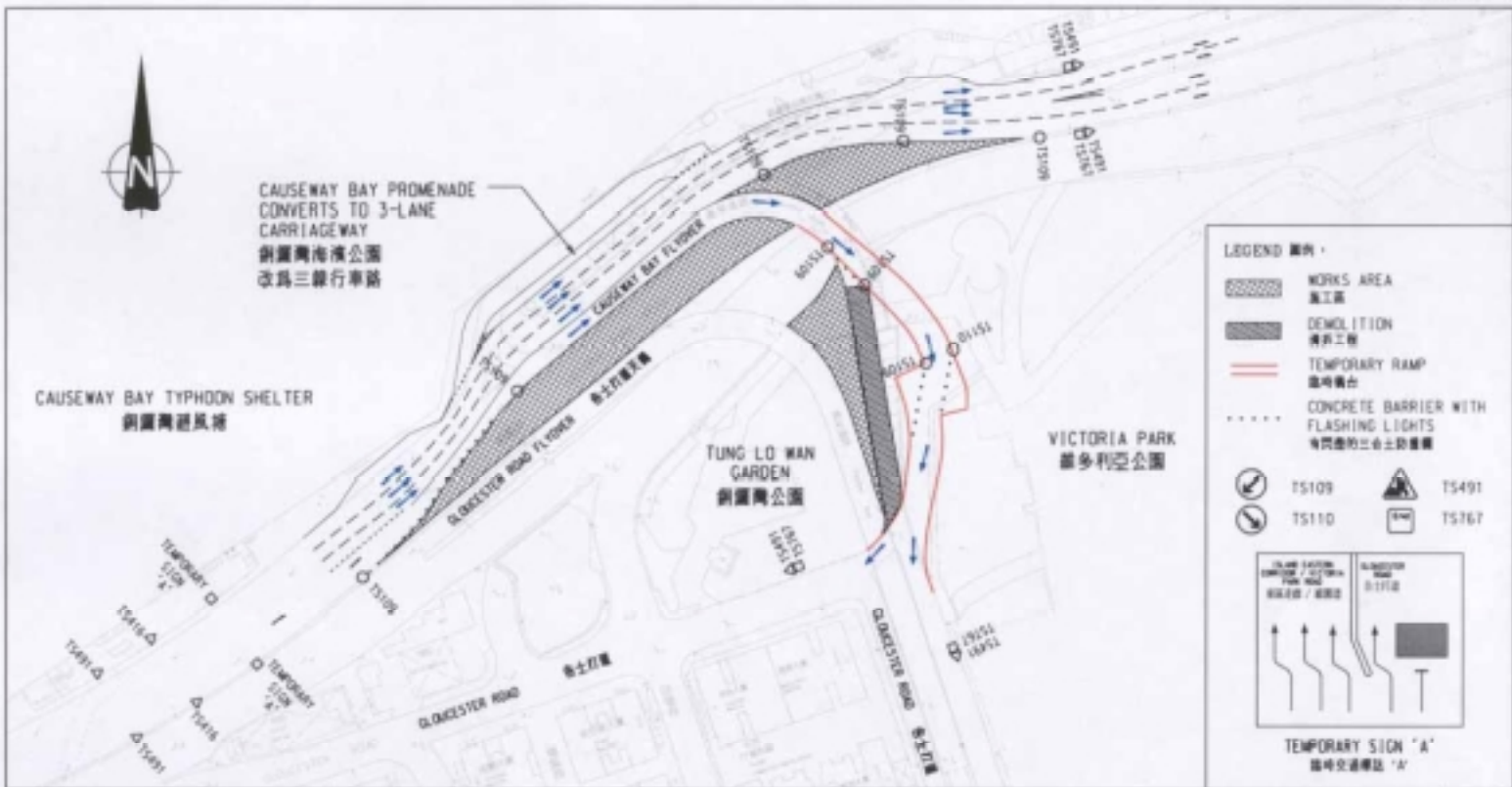
-  REINSTATEMENT WORKS
恢復工程
-  WIDENING OF VICTORIA PARK
ROAD
維多利亞公園擴闊工程

工務計劃項目第 323TH 號
新避風塘行人天橋重建及高士街
避風塘飛路工程 - 施工程序 A

PWP ITEM No. 323TH
Reconstruction of Causeway Bay Flyover and Associated Widening of
Victoria Park Road - Construction Works Stage 8

Sequence of Construction 施工程序
(Page 8 of 8)





工務計劃項目第 323TH 號
銅鑼灣行車天橋重建及擴闊道
道路擴闊工程·交通改道方案

PWP ITEM No. 323TH
RECONSTRUCTION OF CAUSEWAY BAY FLYOVER AND ASSOCIATED WIDENING
OF VICTORIA PARK ROAD - TRAFFIC DIVERSION SCHEME

sketch no. 圖號
FIGURE 1
scale 比例
1:1500

HONG KONG REGIONAL OFFICE

