

LEGISLATIVE COUNCIL BRIEF

SHIPPING AND PORT CONTROL REGULATIONS (AMENDMENT OF EIGHTEENTH SCHEDULE) NOTICE 2004

INTRODUCTION

This paper briefs Members on the captioned notice (copy at Annex A) to establish three additional restricted zones to enhance marine safety. The notice is made under regulation 72(1) of the Shipping and Port Control Regulations, Cap. 313 sub. leg. A (“SAPCR”).

BACKGROUND

2. The specification of restricted zones is aimed at separating high-speed waterborne activities (such as water skiing) from other slow-speed waterborne activities (such as swimming). Vessels navigating inside the restricted zones are required to proceed at a speed of not exceeding 5 knots, between 8 a.m. to 12:00 midnight on any Saturday or public holiday or on any day during the period from 1 July to 15 September. Currently, there are 19 restricted zones in Hong Kong and they are specified in the Eighteenth Schedule to the SAPCR.

3. High-speed waterborne activities are increasingly popular in Hong Kong and they give rise to safety concerns. To address public concerns and enhance marine safety, the Marine Department has conducted a review on navigational safety and recommends setting up new restricted zones in Discovery Bay, Repulse Bay and Tai Tam Bay areas. Their locations are shown on the map at Annex B.

THE NOTICE

4. To enhance the safety of waterborne activities at or near popular beach areas, we propose to amend the Eighteenth Schedule to the SAPCR to add three restricted zones as proposed in paragraph 3.

LEGISLATIVE TIMETABLE

5. The legislative timetable for the notice is as follows:

Publication in the Gazette	19 March 2004
Tabling at the Legislative Council	24 March 2004
Implementation	15 May 2004

IMPLICATIONS OF THE PROPOSAL

6. The proposal is in conformity with the Basic Law, including the provisions on human rights. It will not affect the binding effect of the Shipping and Port Control Ordinance. It has no additional financial implication and does not involve staff implications for the Government. The Marine Department will enforce the additional restricted zones using existing staff and resources.

PUBLIC CONSULTATION

7. The Committee on Boating and Yachting and the Provisional Local Vessel Advisory Committee were consulted in November and December 2002 respectively and supported the proposal. We have also consulted waterborne activity users of the concerned areas and the Legislative Council Panel on Economic Services, and obtained their support.

PUBLICITY

8. A press release will be issued on 19 March 2004. A spokesman will be made available to answer public and media enquiries. Relevant users will also be notified by the Marine Department.

ENQUIRY

9. Any enquiry on this brief can be addressed to Mr K M Lee, Assistant Director of Marine (2852 4403) or Miss Florence Chan, Assistant Secretary for Economic Development and Labour (2537 2842).

Economic Development and Labour Bureau
19 March 2004

**SHIPPING AND PORT CONTROL REGULATIONS
(AMENDMENT OF EIGHTEENTH SCHEDULE)
NOTICE 2004**

(Made under regulation 72(1) of the Shipping and Port Control
Regulations (Cap. 313 sub. leg. A))

1. Commencement

This Notice shall come into operation on 15 May 2004.

2. Restricted Zones

The Eighteenth Schedule to the Shipping and Port Control Regulations
(Cap. 313 sub. leg. A) is amended –

(a) in item 3, by adding –

“(g) Zone A10

Tai Tam Bay

The waters of Hong Kong bounded on the east by a straight line drawn 003° (T) from a position on the western coast of Tai Tam Bay at latitude 22° 13.026' north, longitude 114° 13.103' east to a position on the northern coast of the bay at latitude 22° 13.656' north, longitude 114° 13.136' east. A reference to the co-ordinates of a point is a reference to the co-ordinates of that point based on the World Geodetic System 1984 (WGS 84).

(h) Zone A11

Repulse Bay

The waters of Hong Kong bounded on the west by a straight line drawn 314° (T) from the western extremity of the

headland at the south of Middle Bay (latitude $22^{\circ}13.711'$ north, longitude $114^{\circ}11.783'$ east) to the headland at the eastern side of Middle Island at latitude $22^{\circ}14.083'$ north, longitude $114^{\circ}11.373'$ east, thence by a straight line drawn 057° (T) to a position on the northern coast of Repulse Bay at latitude $22^{\circ}14.171'$ north, longitude $114^{\circ}11.518'$ east. A reference to the co-ordinates of a point is a reference to the co-ordinates of that point based on the World Geodetic System 1984 (WGS 84).”;

(b) by adding –

“6. LANTAU ISLAND

Zone L1

Discovery Bay

The waters of Hong Kong bounded on the east by a straight line drawn 000° (T) from a position on the southern coast of Discovery Bay at latitude $22^{\circ}17.742'$ north, longitude $114^{\circ}01.188'$ east to a position on the western coast of the bay at latitude $22^{\circ}18.067'$ north, longitude $114^{\circ}01.187'$ east. A reference to the co-ordinates of a point is a reference to the co-ordinates of that point based on the World Geodetic System 1984 (WGS 84).”.

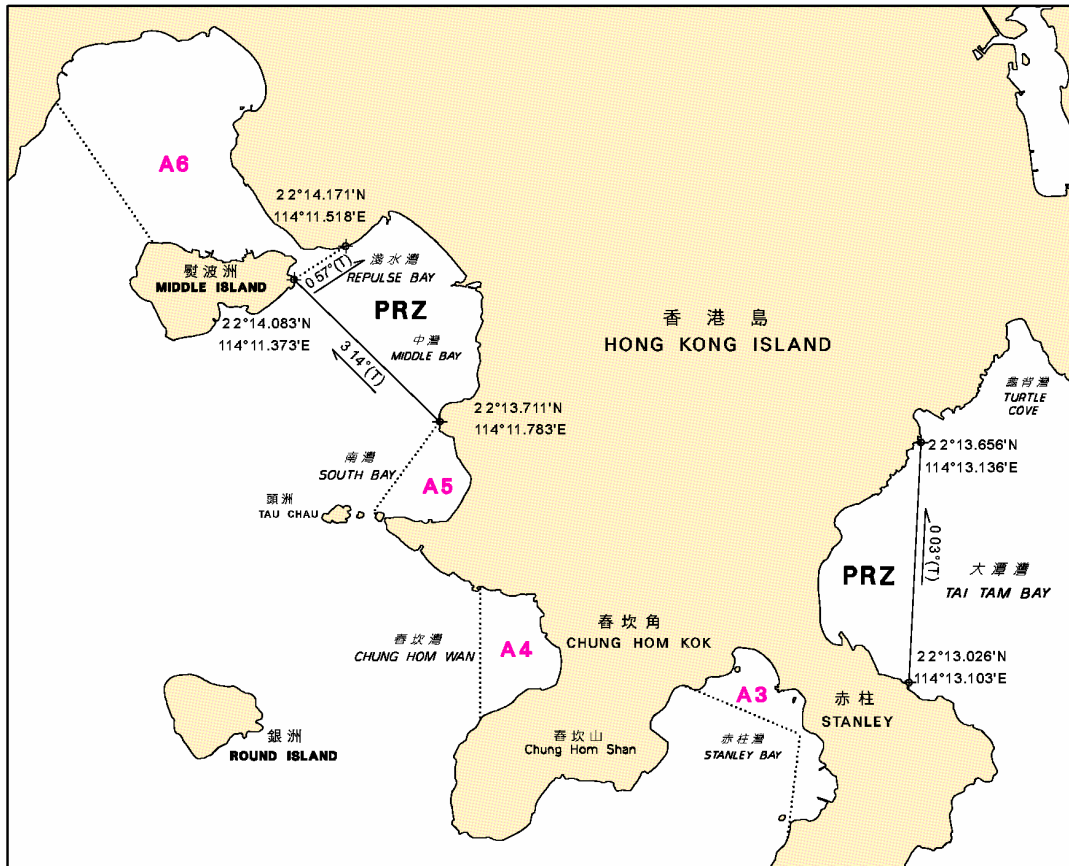
Director of Marine

2004

Explanatory Note

This Notice amends the Eighteenth Schedule to the Shipping and Port Control Regulations (Cap. 313 sub. leg. A) to add 3 new restricted zones in which vessels navigating within the specified time are subject to a speed limit.

擬設立限制區的界線：淺水灣和大潭灣
**Boundaries of Proposed Restricted Zones (PRZ) :
 Repulse Bay and Tai Tam Bay**



擬設立限制區的界線：大白灣
**Boundaries of Proposed Restricted Zones (PRZ) :
 Discovery Bay**

