

# 香港的住戶收入分布

## Household Income Distribution in Hong Kong

二零零七年七月十日

10 July 2007

# 收入分布

## Income Distribution

- 個人收入

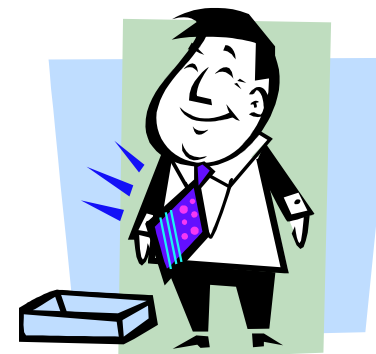
### Individual income

- 職業收入: 包括工資、薪金和相關的津貼

**Employment income: covers wages, salaries and related allowances**

- 其他現金收入包括租金收入、利息、股息等

**Other cash income: includes rental income, interests, dividends etc.**



- 住戶收入

### Household income

- 所有住戶成員收入總和

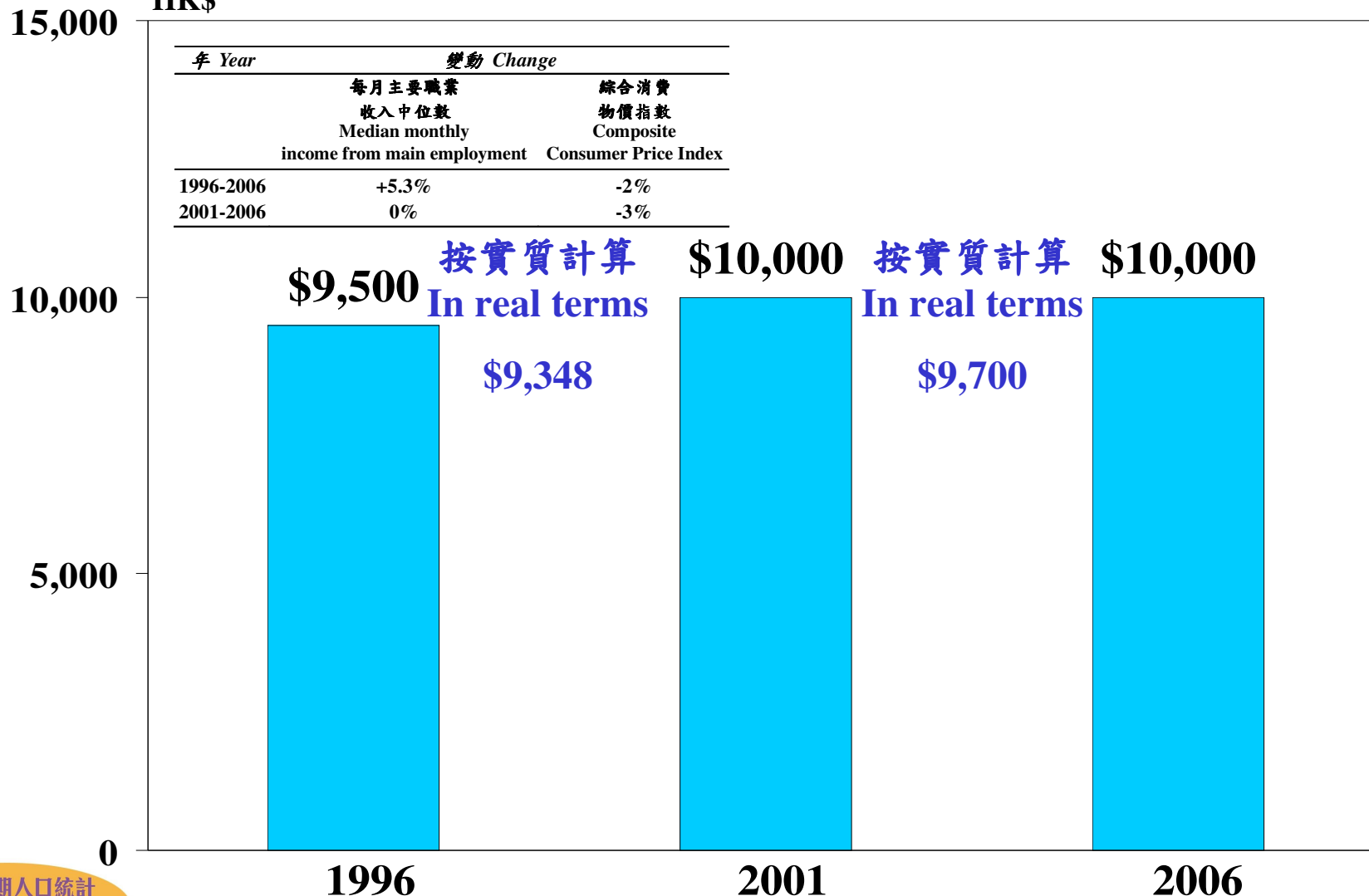
**Sum of income from all household members**



# 每月主要職業收入中位數

## Median Monthly Income from Main Employment

港元  
HK\$



# 職業收入 (不包括外籍家庭傭工)

## Employment Income (excl. Foreign Domestic Helpers)

每月主要職業收入 (以固定(二零零六年六月)市價計算) Monthly Income from Main Employment (At Constant (June 2006) Prices)	1996		2001		2006	
	數目 Number	百分比 %	數目 Number	百分比 %	數目 Number	百分比 %
< \$4,000	247 550	8.5	224 464	7.4	215 455	6.8
\$4,000 - \$14,999	1 978 884	68.3	1 869 815	61.3	1 889 956	59.8
≥\$15,000	671 857	23.2	953 513	31.3	1 052 426	33.3
總計 Total	2 898 291	100.0	3 047 792	100.0	3 157 837	100.0

# 職業收入

## Employment Income

收入組別 Income Group	每月主要職業收入中位數 (港元) Median Monthly Income from Main Employment (HK\$)		
	1996	2001	2006
第一至第二個十等分組別 1st – 2nd Decile Groups	4,000	3,860	3,500
第三至第八個十等分組別 3rd – 8th Decile Groups	9,500	10,000	10,000
第九至第十個十等分組別 9th – 10th Decile Groups	25,000	30,000	30,000
總計 Total	9,500	10,000	10,000

← -12.5%

→ +20.0%

# 職業收入差距增加

## Increased Employment Income Disparity

- 與人口結構的轉變相關

Associated with changes in structure of the population

	收入差別 Income differentials	人口轉變 Demographic changes
性別 Gender	男性的收入高於女性 Men earned more than women	性別比率下跌-即女性多於男性 Drop in sex ratio – more women than men

# 在職男性及女性的每月主要職業收入中位數

## Median Monthly Income from Main Employment of Working Men and Women

性別 Sex	每月主要職業收入中位數 (港元) Median Monthly Income from Main Employment (HK\$)		
	1996	2001	2006
男 Male	10,000	12,000	11,000
女 Female	8,000	8,900	8,500
合計 Both sexes	9,500	10,000	10,000

25.0% (Increase for Male from 1996 to 2001)  
 29.4% (Increase for Female from 1996 to 2006)

# 性別劃分的工作人口

## Working Population by Sex

性別 Sex	1996		2001		2006	
	數目 Number	百分比 %	數目 Number	百分比 %	數目 Number	百分比 %
男 Male	1 826 219	60.5	1 813 251	56.2	1 795 676	53.7
女 Female	1 190 245	39.5	1 415 856	43.8	1 549 310	46.3
合計 Both sexes	3 016 464	100.0	3 229 107	100.0	3 344 986	100.0



# 職業收入差距增加

## Increased Employment Income Disparity

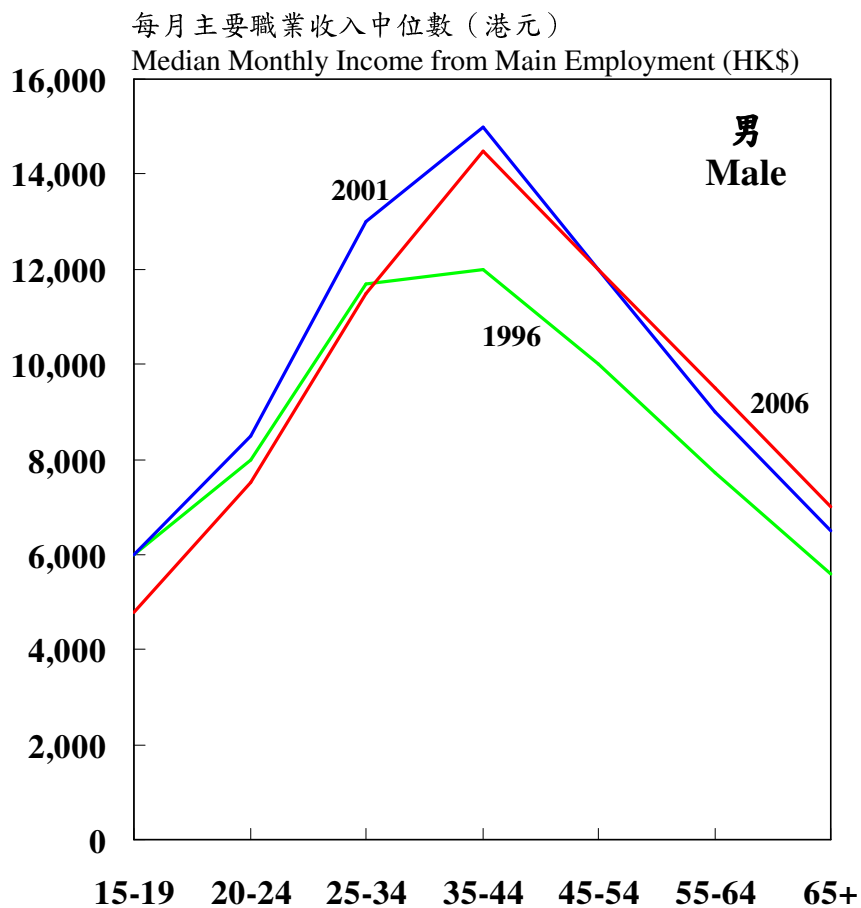
- 與人口結構的轉變相關

Associated with changes in structure of the population

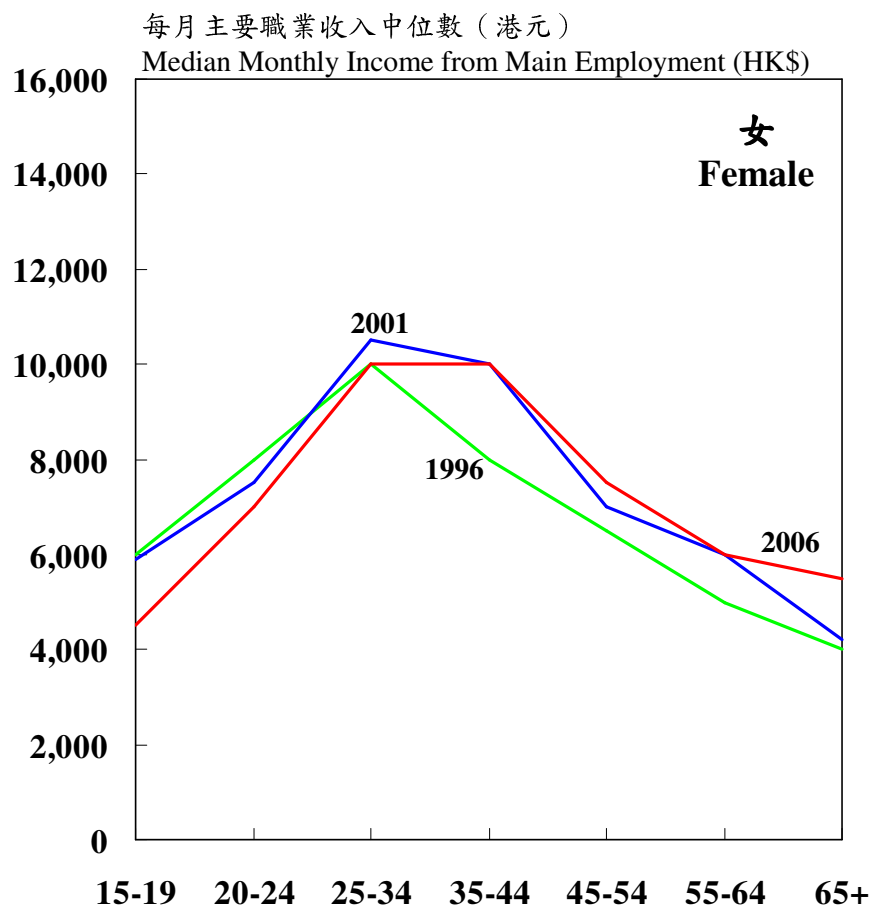
	收入差別 Income differentials	人口轉變 Demographic changes
生命週期 Lifecycle	<p>收入能力隨年齡上升從年輕年齡組別逐步上升，至中年年齡組別到達頂峰然後在年長年齡組別下降</p> <p>Earning ability increases with age, from young to a peak in the middle age and then declines at the older age</p>	<p>人口老化—長者數目增加</p> <p>Population ageing – increase in the number of older persons</p>

# 在職男性及女性的每月主要職業收入中位數

## Median Monthly Income from Main Employment of Working Men and Women



年齡組別  
Age Group



年齡組別  
Age Group

# 職業收入差距增加

## Increased Employment Income Disparity

- 與人口結構的轉變相關

Associated with changes in structure of the population

	收入差別 Income differentials	人口轉變 Demographic changes
教育 Education	教育程度較高的在職人士收入普遍較高 Working persons with higher educational attainment generally had higher income	教育水平持續提升-教育程度較高的在職人士增加 Continuous upgrading of education attainment of the population – more higher-educated working persons

# 工作人口的每月主要職業收入中位數

## Median Monthly Income from Main Employment of Working Population

教育程度(最高就讀程度) Education Attainment (Highest Level Attended)	每月主要職業收入中位數 (港元) Median Monthly Income from Main Employment (HK\$)		
	1996	2001	2006
未受教育／學前教育 No schooling / Pre-primary	5,000	5,600	5,500
小學 Primary	7,000	7,600	7,000
初中 Lower Secondary	8,000	9,000	8,000
高中 Upper Secondary	9,700	10,000	10,000
預科 Six Form	12,000	11,000	9,500
專上教育：文憑／證書課程 Post Secondary: Diploma / Certificate	15,000	18,000	11,500
專上教育：副學位課程 Post Secondary: Sub-degree course			12,000
專上教育：學位課程 Post Secondary: Degree course	19,800	21,250	19,500
總計 Total	9,500	10,000	10,000

## 按教育程度（最高就讀程度）劃分的工作人口

### Working Population by Educational Attainment (Highest Level Attended)

教育程度(最高就讀程度) Education Attainment (Highest Level Attended)	1996		2001		2006			
	數目 Number	百分比 %	數目 Number	百分比 %	數目 Number	百分比 %		
未受教育／學前教育 No schooling / Pre-primary	85 319	2.8	63 622	2.0	52 431	1.6		
小學 Primary	542 349	18.0	489 601	15.2	407 342	12.2		
初中 Lower Secondary	613 956	20.4	640 081	19.8	633 896	19.0		
高中 Upper Secondary	981 579	32.5	988 504	30.6	1 033 920	30.9		
預科 Six Form	202 109	6.7	343 424	10.6	209 494	6.3		
專上教育：文憑／證書課程 Post Secondary: Diploma / Certificate	}	6.2	}		151 934	4.5		
專上教育：副學位課程 Post Secondary: Sub-degree course				187 195	160 287	5.0	163 423	4.9
專上教育：學位課程 Post Secondary: Degree course				403 957	13.4	543 588	16.8	692 546
總計 Total	3 016 464	100.0	3 229 107	100.0	3 344 986	100.0		

# 堅尼系數

## Gini Coefficient

	1996	2001	2006
主要職業收入 Income from main employment	0.483	0.488	0.500
按選定行業劃分的人口分組堅尼系數 Population sub-group Gini coefficient by selected industries			
製造業 Manufacturing	0.461	0.447	0.481
金融、保險、地產及商用服務業 Financing, insurance, real estate and business services	0.552	0.532	0.544

# 堅尼系數

## Gini Coefficient

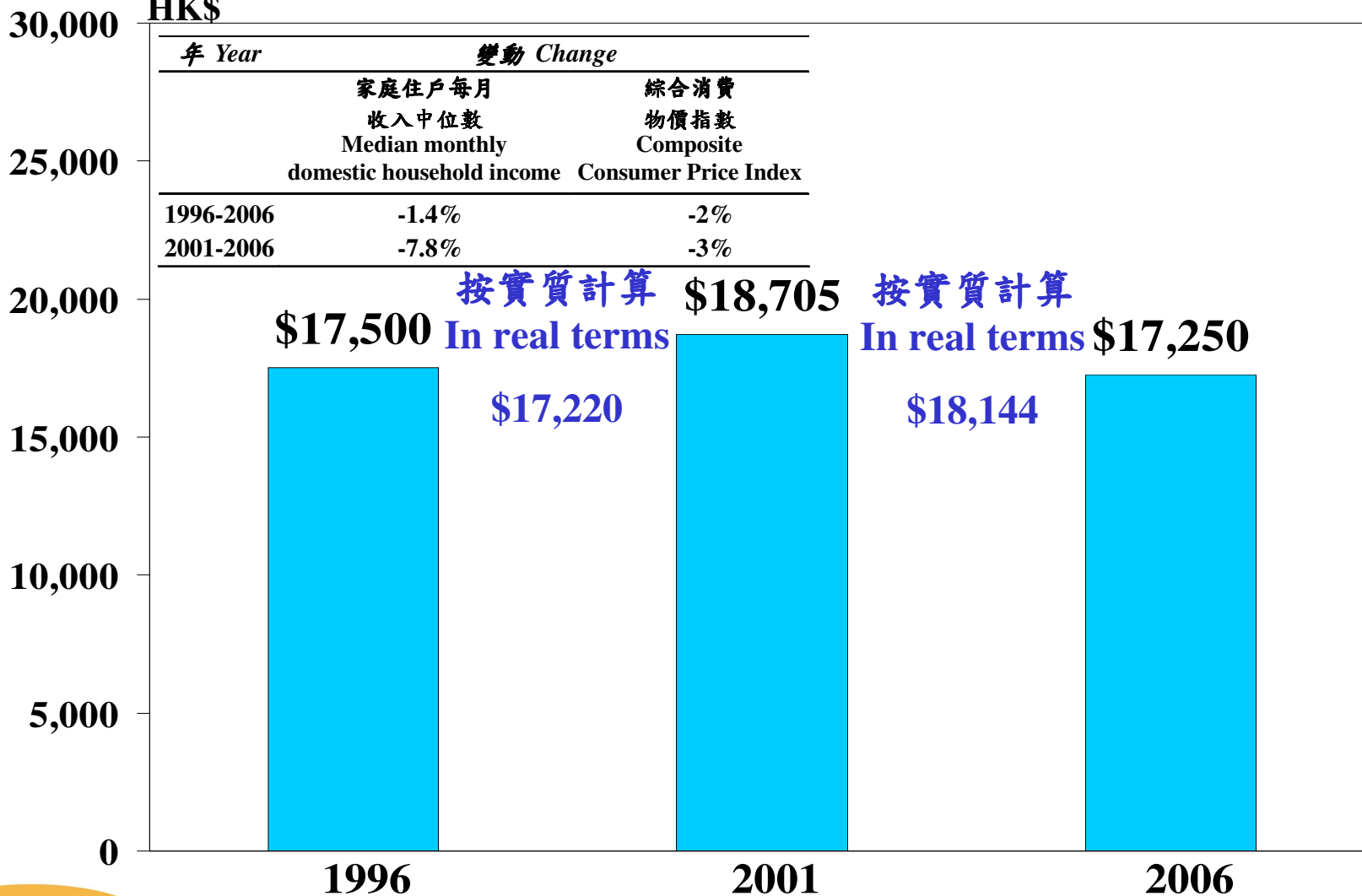
	1996	2001	2006
按選定職業劃分的人口分組堅尼系數			
Population sub-group Gini coefficient by selected occupations			
經理及行政人員 Managers and administrators	0.556	0.521	0.528
文員 Clerk	0.234	0.256	0.272
按選定教育程度（最高就讀程度）劃分的人口分組堅尼系數			
Population sub-group Gini coefficient by selected educational attainment (highest level attended)			
未受教育／學前教育 No schooling / Pre-primary	0.370	0.349	0.418
專上教育：學位課程 Post-secondary : degree course	0.562	0.529	0.528

# 家庭住戶每月收入中位數

## Median Monthly Domestic Household Income

港元

HK\$





# 家庭住戶收入

## Household Income

	1996		2001		2006	
家庭住戶每月收入 Monthly Domestic Household Income	數目 Number	百分比 %	數目 Number	百分比 %	數目 Number	百分比 %
< \$4,000	123 869	6.7	163 423	8.0	205 515	9.2
\$4,000 - \$39,999	1 452 981	78.3	1 513 195	73.7	1 642 558	73.8
≥\$40,000	278 703	15.0	376 794	18.3	378 473	17.0
總計 Total	1 855 553	100.0	2 053 412	100.0	2 226 546	100.0

# 住戶收入分布

## Household Income Distribution

住戶收入 Household income	4,000 元以下 Below \$4,000	40,000 元或以上 At \$40,000 or above
<p>最高和最低部分的住戶所佔的百分比增加的主要原因</p> <p>Major reason(s) for the increase in number of households at the lowest and highest segments between 1996 and 2006</p>	<ul style="list-style-type: none"> <li>• 長者住戶數目增加 Increasing number of older-person households</li> <li>• 沒有工作成員的非長者住戶數目增加 Increasing number of non-older person households without working members</li> </ul>	<ul style="list-style-type: none"> <li>• 有兩名有收入者的住戶增加 Growth of two-earner households</li> <li>• 人口的教育程度改善 Improvement in educational attainment of the population</li> </ul>

# 堅尼系數

## Gini Coefficient

	1996	2001	2006
原本住戶收入 Original household income	0.518	0.525	0.533
除稅後住戶收入 Post-tax household income	0.508	0.515	0.521
除稅及福利轉移後住戶收入 Post-tax post-social transfer household income	0.466	0.470	0.475
除稅及福利轉移後人口平均住戶收入 Per capita post-tax post-social transfer household income	0.427	0.421	0.427

# 收入低於4,000元的住戶

## Households with Income below \$4,000

	1996	2001	2006	1996年和 2006年的 差別	佔1996年 至2006年 間的增幅 的比例
	數目 Number	數目 Number	數目 Number	Difference between 1996 and 2006	Contribution to the increase between 1996 and 2006
長者住戶 Older-person households	61 900	88 393	98 656	36 756	45.0%
長者與非長者同住的住戶 Older cum non-older person household	17 864	23 017	29 122	11 258	13.8%
沒有工作成員 Without working members	12 323	18 764	23 317	10 994	13.5%
非長者住戶 Non-older-person households	44 105	52 013	77 737	33 632	41.2%
沒有工作成員 Without working members	24 623	38 931	59 393	34 770	42.6%

# 收入低於平均綜援金額的住戶

## Households with Income below Average CSSA Payment

	1996	2001	2006
	數目	數目	數目
	Number	Number	Number
住戶數目	129 910	164 381	144 637
Number of households			
佔全港住戶比例(百分比)	7.0	8.0	6.5
Proportion to total households (%)			
平均住戶人數	4.2	3.9	3.6
Average household size			
十五歲以下人口比例(百分比)	34.2	28.0	22.1
Proportion of persons aged under 15 (%)			
居於公營租住房屋比例(百分比)	56.1	52.0	54.4
Proportion of households living in public rental housing (%)			
勞動人口參與率(百分比)	48.3	48.5	47.3
Labour force participation rate (%)			
平均工作成員數目	1.2	1.2	1.2
Average number of working members			

# 與國際比較

## International Comparison

- 香港的堅尼系數與英國及加拿大的較接近，是處於較高水平。  
Hong Kong has a higher Gini coefficient comparable to those of United Kingdom and Canada.

- 至於收入差距的變化，香港與很多經濟體系所觀察到的一般差距擴大趨勢相似

Regarding change in income disparity, Hong Kong is in line with a common trend towards greater income disparity as noted in many economies

# 與國際比較

## International Comparison

- 按原本住戶收入計算

Based on Original Household Income

	年份 Year	堅尼系數 Gini Coefficient	期間的變動 Change Over the Period
香港 Hong Kong	1996	0.518	+0.015
	2006	0.533	
加拿大 Canada	2001	0.513	-0.003
	2004	0.510	
英國 United Kingdom	1995/96	0.520	-0.010
	2004/05	0.510	
新西蘭 New Zealand	1987/88	0.424	+0.061
	1997/98	0.485	
新加坡 Singapore	1995	0.443	+0.038
	2000	0.481	

完  
End