

**Consultative Committee on the  
Core Arts and Cultural Facilities of the  
West Kowloon Cultural District**

**Temporary Uses in the West Kowloon  
Cultural District Project Area**

**Purpose**

This paper gives information on the temporary uses in the West Kowloon Cultural District (WKCD) Project Area.

**Current Temporary Uses in the WKCD Project Area**

2. The WKCD Project Area occupies about 40 hectares of land. Before the WKCD project is implemented, the land on the Project Area is being put to temporary uses in accordance with established practices. Temporary uses on the Project Area at present mainly include -

- (a) a 1.8-hectare West Kowloon Waterfront Promenade (the Promenade) which was open to the public in September 2005. Facilities therein include a 400-metre timber boardwalk, a semi-covered viewing deck, a sand pit, a

children's play area, pergolas, landscape areas, and a 700-metre cycling track leading from the WKCD site entrance to the viewing deck of the Promenade. Ancillary facilities include a management office, public toilets, a public access road and a metered car park with 30 parking spaces for private cars and two parking spaces for coaches;

- (b) a temporary tree bank managed by the Leisure and Cultural Services Department;
- (c) sites allocated to the Mass Transit Railway Corporation and Kowloon-Canton Railway Corporation on a temporary basis as works areas for infrastructure projects;
- (d) sites allocated to various Government departments for their temporary facilities. For example, a station and a fire boat berth used by FSD, and a salt water pumping station used by WSD, etc.; and
- (e) sites occupied by short-term users under Short Term Tenancies (STT) already let by the Lands Department for different uses including recreation and entertainment activities, open storage and car park.

3. A layout plan of the Project Area indicating the above uses is at **Annex A**.

## **Planning Ahead**

### **Enhancement of the Promenade**

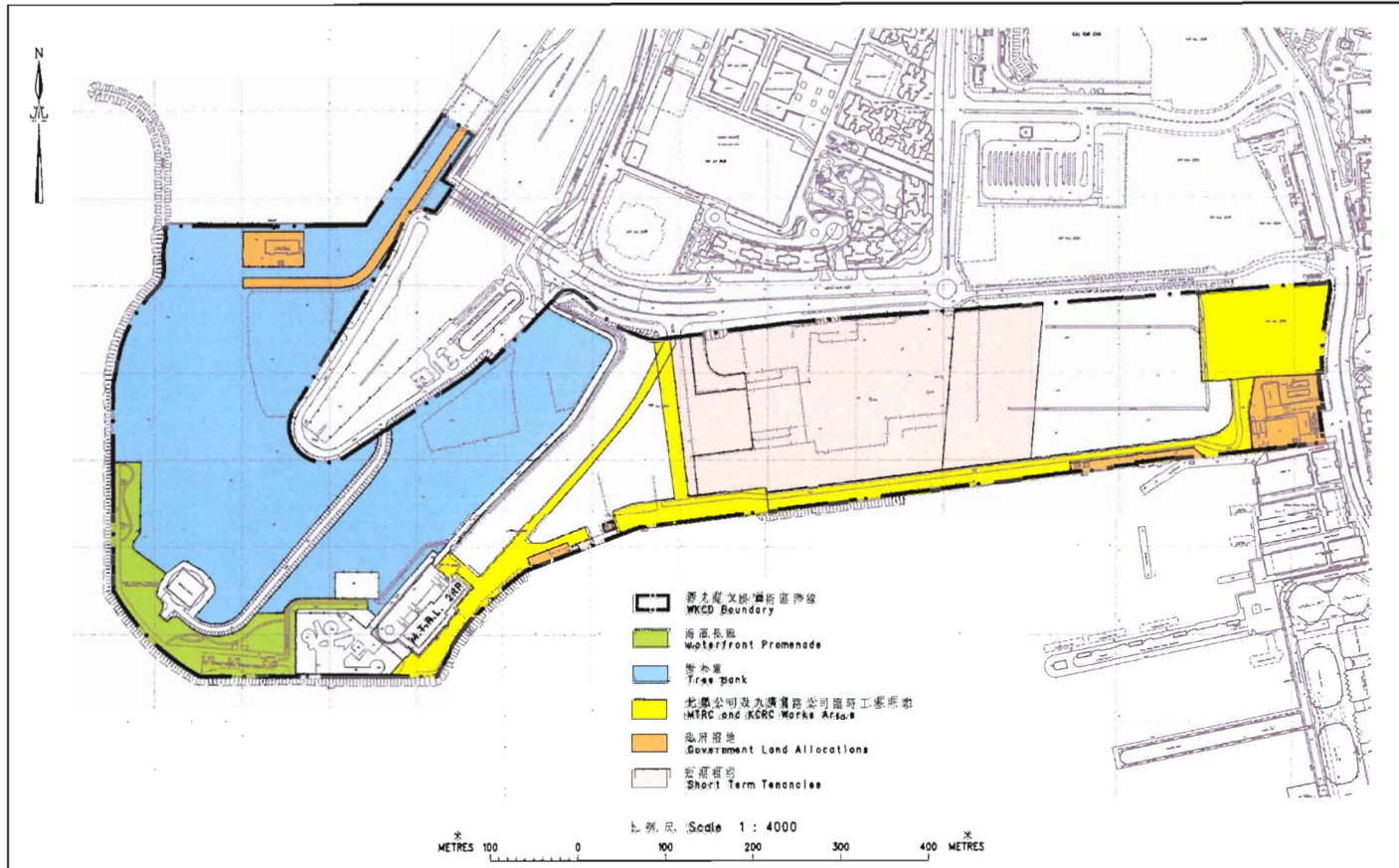
4. The Government will conduct enhancement works for the Promenade in the second half of 2006. The enhancements aim to provide for a more vibrant and attractive open space along the West Kowloon harbour front for public enjoyment, and meet public aspirations for better public facilities along the two sides of the Victoria Harbour. The Promenade and the cycling track therein will be substantially extended, and other facilities such as a light refreshment restaurant will also be enhanced. When the project is completed, the Promenade will be linked to the bus stops near the portal of the Western Harbour Crossing so as to enhance accessibility. It is expected that with enhanced facilities and better accessibility, the Promenade will attract more visitors of different age groups. Details of the proposed enhancements are at **Annex B**. A layout plan of the enhanced Promenade is at **Annex C**.

## **STT sites**

5. The term of the sites already let by the Lands Department under STT (re para 2(e)) will expire in either the end of 2006 or early 2007. We shall review the temporary uses of these sites thereafter. We shall endeavour to put these sites for recreation and entertainment uses under STTs having regard to the envisioned land uses in the future WKCD.

**Housing, Planning and Lands Bureau**

**June 2006**



西九龍地政處  
 District Lands Office, Kowloon West  
 地政總署  
 Lands Department  
 圖則由九龍測量處編製  
 Plan Prepared by District Survey Office, Kowloon

西九龍文娛藝術區用地的臨時用途  
 CURRENT TEMPORARY USES IN THE  
 WEST KOWLOON CULTURAL DISTRICT PROJECT AREA

檔案編號 / File No. LD DSO/K W303/1 JV  
 測量圖編號 / Survey Sheet No. LD-NW-200-24040-11-SW-36-4A  
 展覽圖編號 / Layout Plan No.  
 參考圖編號 / Reference Plan No.  
 圖則編號 / PLAN No. KM7148a

**Scope of the Enhancement Project for the  
West Kowloon Waterfront Promenade**

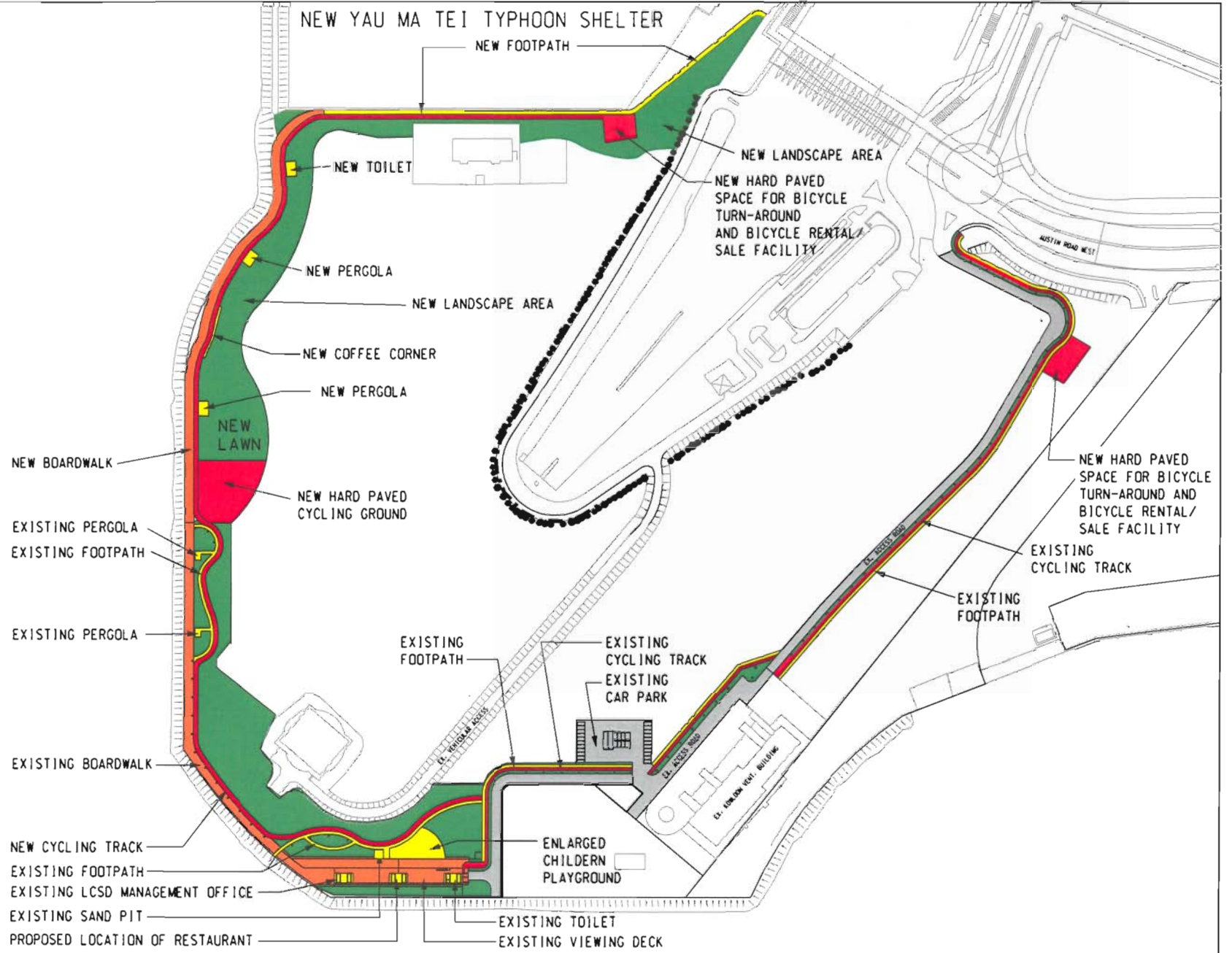
- (a) Extending the Promenade northwards to the edge of the WKCD site near the Western Harbour Crossing (WHC) portal with a new entrance near the bus stops at the WHC toll plaza;
- (b) Extending the timber boardwalk with lantern lighting and the cycling track inside the Promenade northwards by 300 metres and 800 metres respectively to the New Yau Ma Tei Typhoon Shelter;
- (c) Constructing a hard-paved cycling ground for children's use in the middle of the enhanced Promenade, and a small hard paved area at each of the two ends of the extended cycling track for bicycles to turn around and for the provision of bicycle renting/sale facilities;
- (d) Creating a new lawn and landscape area along the extended boardwalk and cycling track;
- (e) Enlarging the existing children's playground and adding more play equipment in it;
- (f) Adding a new coffee corner<sup>1</sup> and new pergolas in the extended portion of the Promenade; and

---

<sup>1</sup> There is an area reserved in the existing Promenade for a light refreshment restaurant, for which an operator has yet to be identified. This restaurant will be retained in the enhanced Promenade. LCSD will shortly launch an open tender exercise to identify the operator.

- (g) Providing more toilets with enhanced facilities, seating benches, directional signs, etc.

**Housing, Planning and Lands Bureau**  
**June 2006**



LAYOUT AFTER COMPLETION OF ENHANCEMENT WORKS FOR WEST KOWLOON WATERFRONT PROMENADE