

立法會民政事務委員會

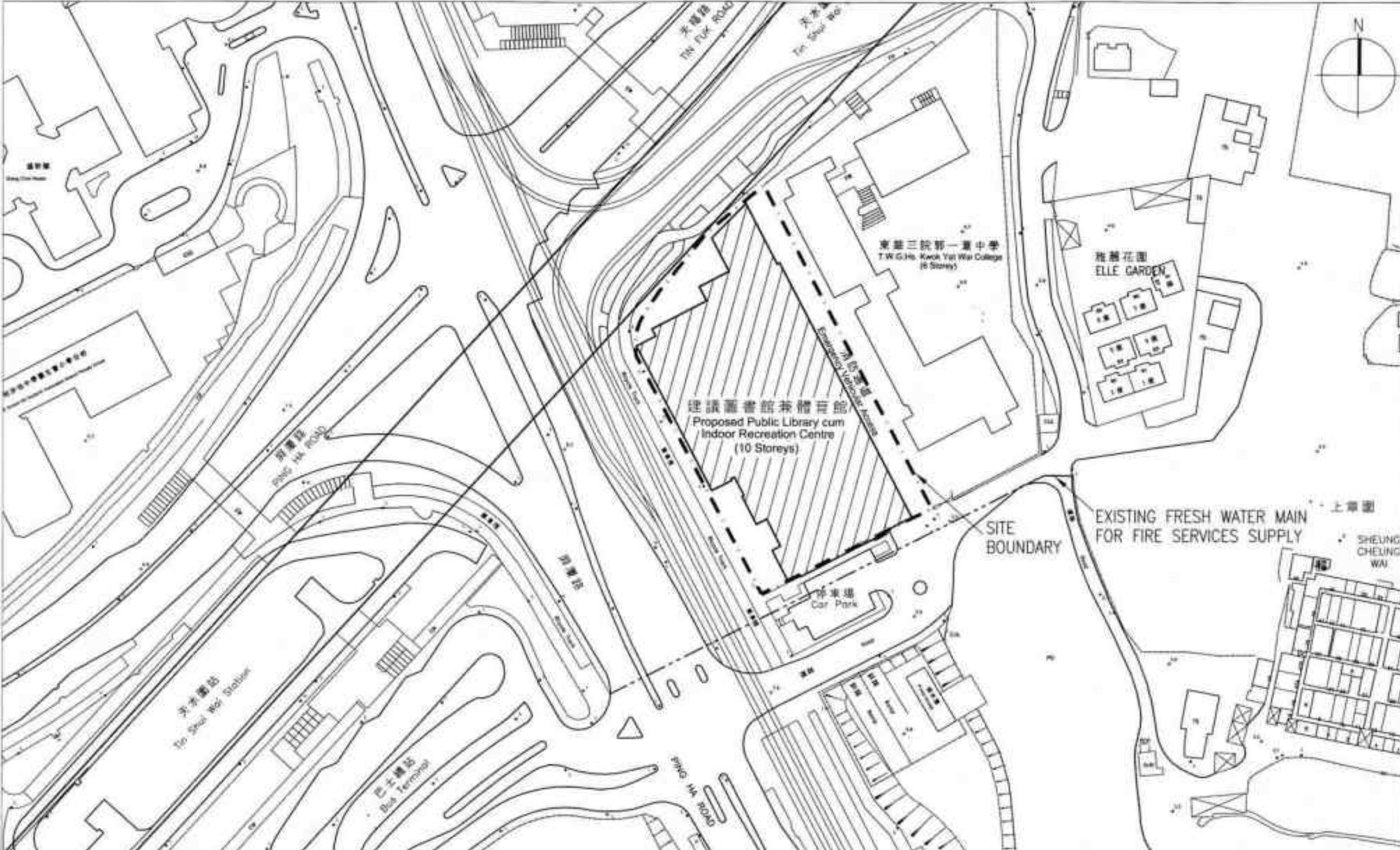
有關天水圍公共圖書館兼體育館
工程計劃預算費分項數字和設計圖的
補充資料

在二零零七年五月十一日的立法會民政事務委員會會議上，有委員在審議有關天水圍公共圖書館兼體育館的檔號 CB(2)1754/06-07(01)文件時，要求政府當局提供該建議工程項目的設計圖和工程計劃預算費（按付款當日價格計算為 6 億 2,540 萬元）的分項數字。現把工程計劃預算費的分項數字列載如下：

	百萬元	
(a) 工地工程	5.5	
(b) 打樁和地庫工程	122.0	
(c) 建築工程	239.8	
(d) 屋宇裝備	123.8	
(e) 渠務	7.5	
(f) 外部工程	7.6	
(g) 家具和設備	44.2	
(h) 應急費用	50.6	
	<hr/>	
小計	601.0	（按二零零六年九月價格計算）
(i) 價格調整準備	24.4	
	<hr/>	
總計	625.4	（按付款當日價格計算）
	<hr/>	

2. 該建議公共圖書館兼體育館的設計圖載於**附件**。

民政事務局
二零零七年六月



天禧路
Tin Shui Road

天禧路
Tin Shui Road

東華三院第一萬中學
T.W.G.Hs. Kwok Yat Wai College
(6 Storeys)

雅麗花園
ELLE GARDEN

建議圖書館兼體育館
Proposed Public Library cum
Indoor Recreation Centre
(10 Storeys)

SITE
BOUNDARY

EXISTING FRESH WATER MAIN
FOR FIRE SERVICES SUPPLY

上草圍

SHEUNG
CHEUNG
WAI

停車場
Car Park

天水圍站
Tin Shui Road Station

巴士總站
Bus Terminal

天禧路
Tin Shui Road

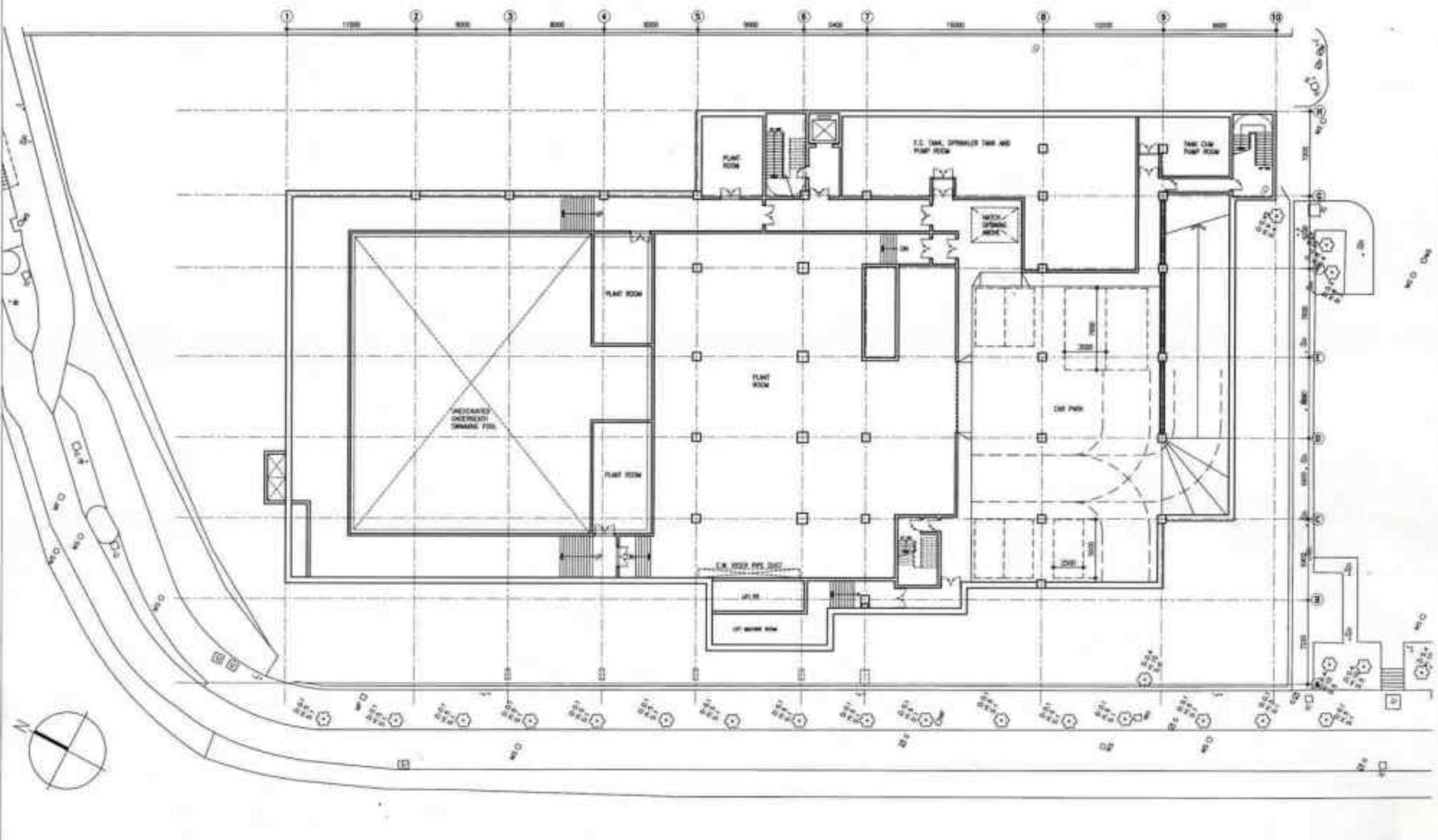
Project	TIN SHUI WAI PUBLIC LIBRARY CUM INDOOR RECREATION CENTRE
Client	AL LUI 23/3/07
Architect	H.K. OUY 21/3/02
Scale	1:500
Date	23/3/07
Drawn by	A.H.C. 20/3/07
Checked by	L.W. 20/3/07
Project No.	ASH/333/PL/CS/W
Sheet No.	001

TIN SHUI WAI PUBLIC LIBRARY
CUM INDOOR RECREATION CENTRE

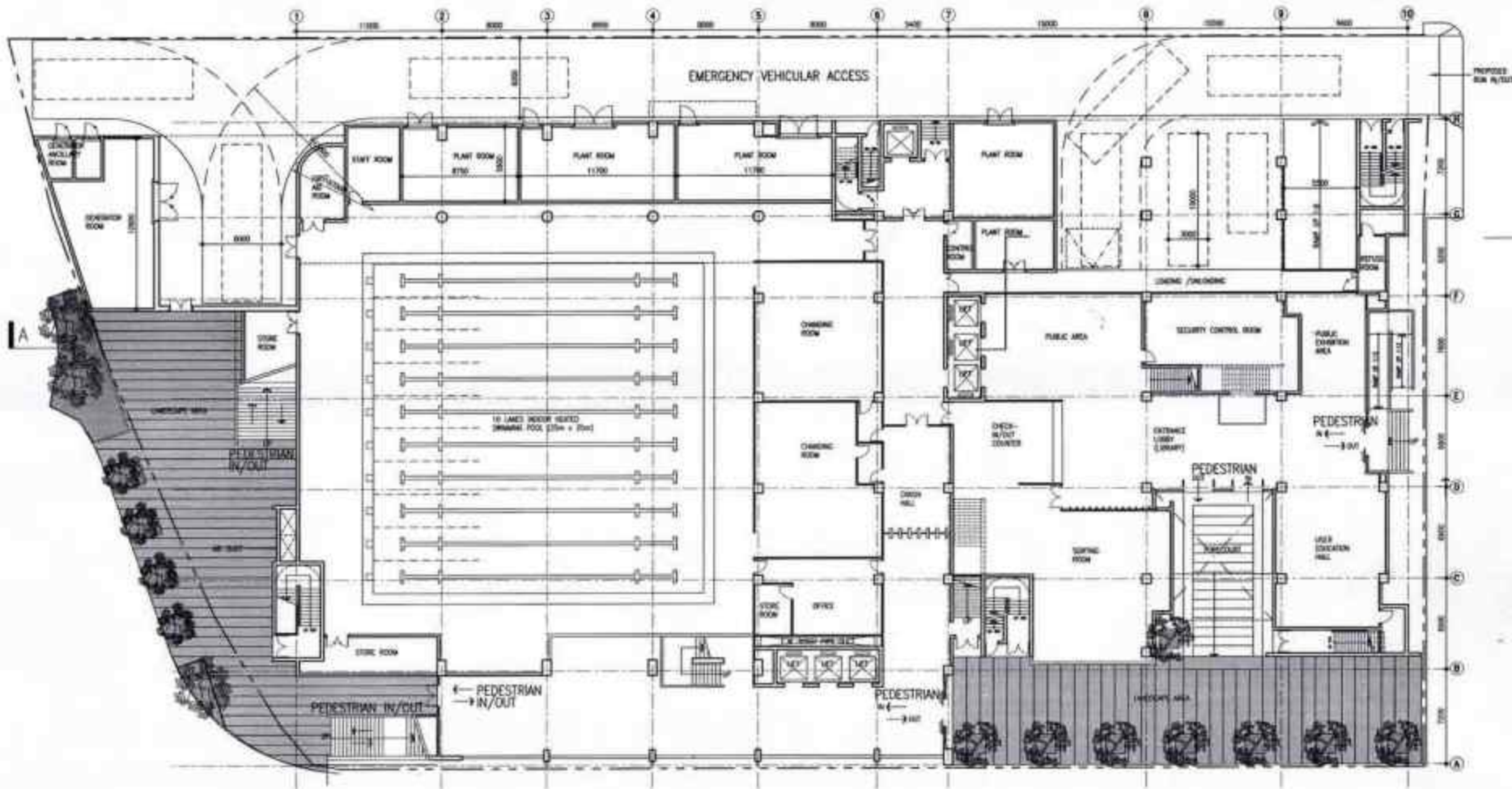
ARCHITECTURAL BRANCH

SITE PLAN

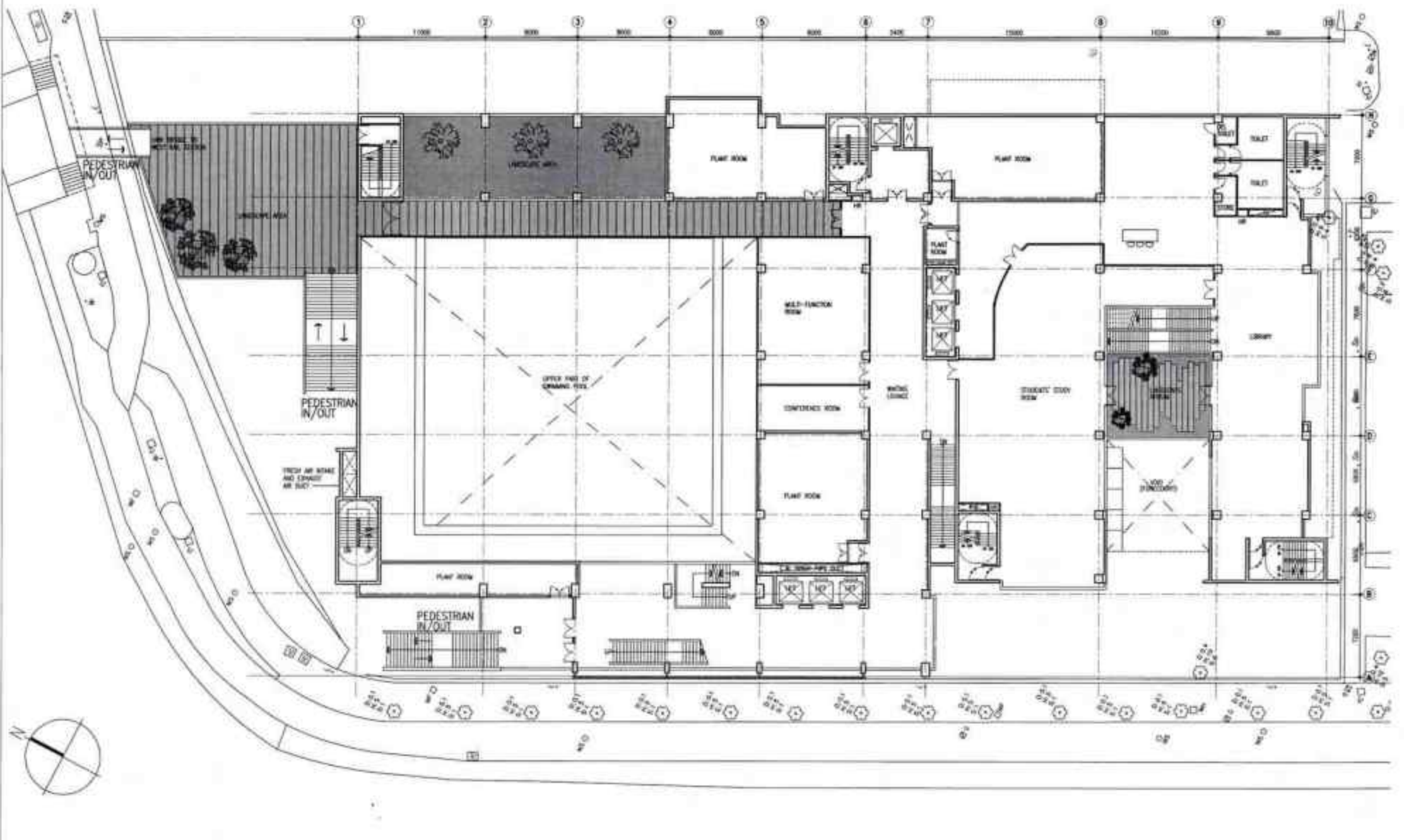
Project No.	AL/333/TP/GP01	Scale	1:500
ARCHITECTURAL BRANCH			
ARCHITECTURAL SERVICES DEPARTMENT			



PROJECT: TIN SHUI WAI PUBLIC LIBRARY C/M INDOOR RECREATION CENTRE DRAWING NO: A1/3333/TP/01002 SCALE: 1:300	
DEPARTMENT: ARCHITECTURAL BRANCH ARCHITECTURAL SERVICES DEPARTMENT	
DRAWING TITLE: BASEMENT PLAN	
DATE: 11/1/07 DRAWN: S.K. CHAN CHECKED: A. WONG APPROVED: I. WONG	PROJECT NO: A1/3333/TP/01002 DRAWING NO: A1/3333/TP/01002 SCALE: 1:300

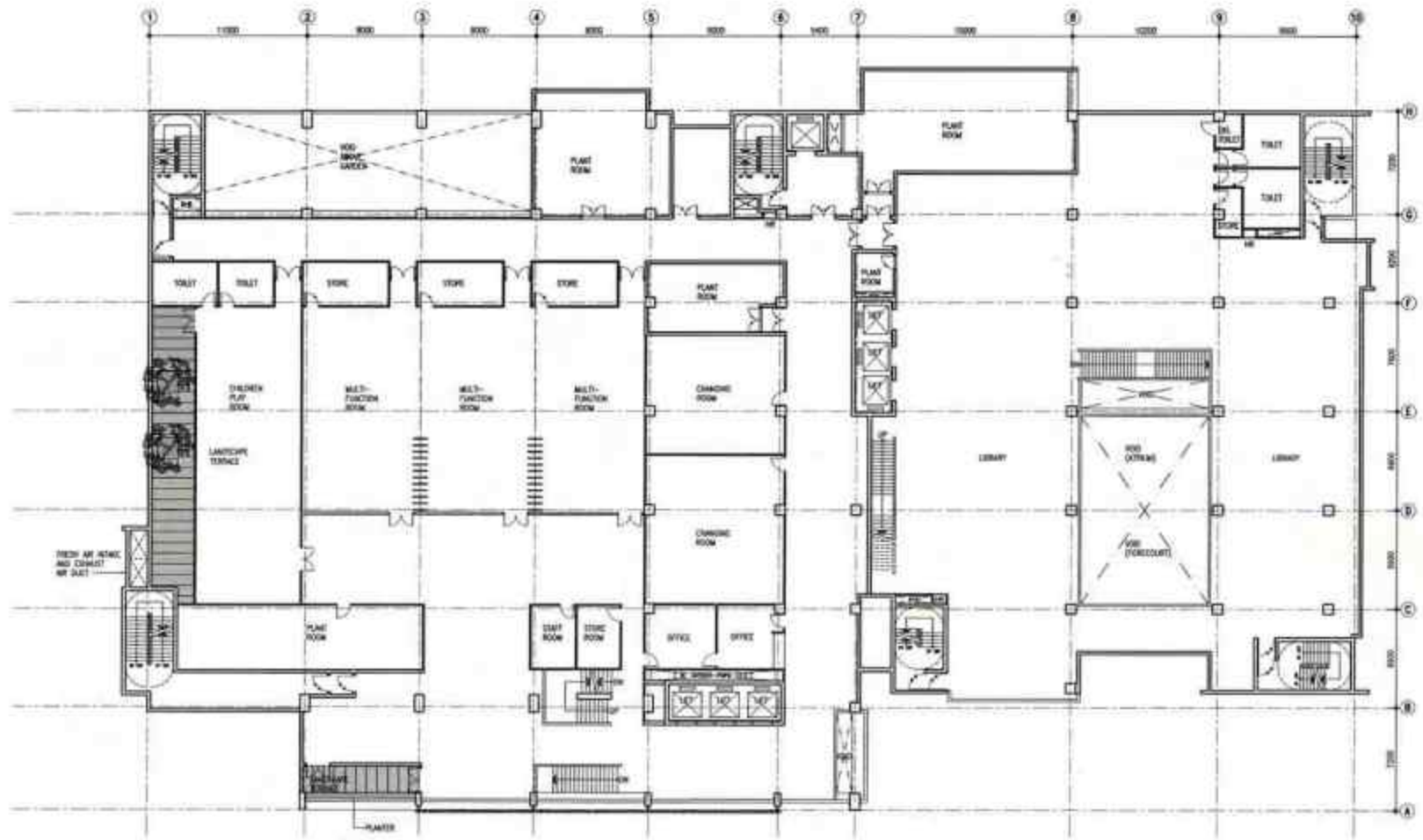


Project Name: TIN SHUI WAN PUBLIC LIBRARY CUM INDOOR RECREATION CENTRE Project No: AG/3333/TP/GP063 Scale: 1:500	
Architectural Branch	
Architectural Services Department	
Drawing Title: GROUND FLOOR PLAN	
Date: 23/3/07 Drawn by: J.R. CHAN Checked by: J. LIM Date: 23/3/07 Date: 20/3/07 Date: 20/3/07	Drawing No: AG/3333/W/CR/W Scale: 1:500



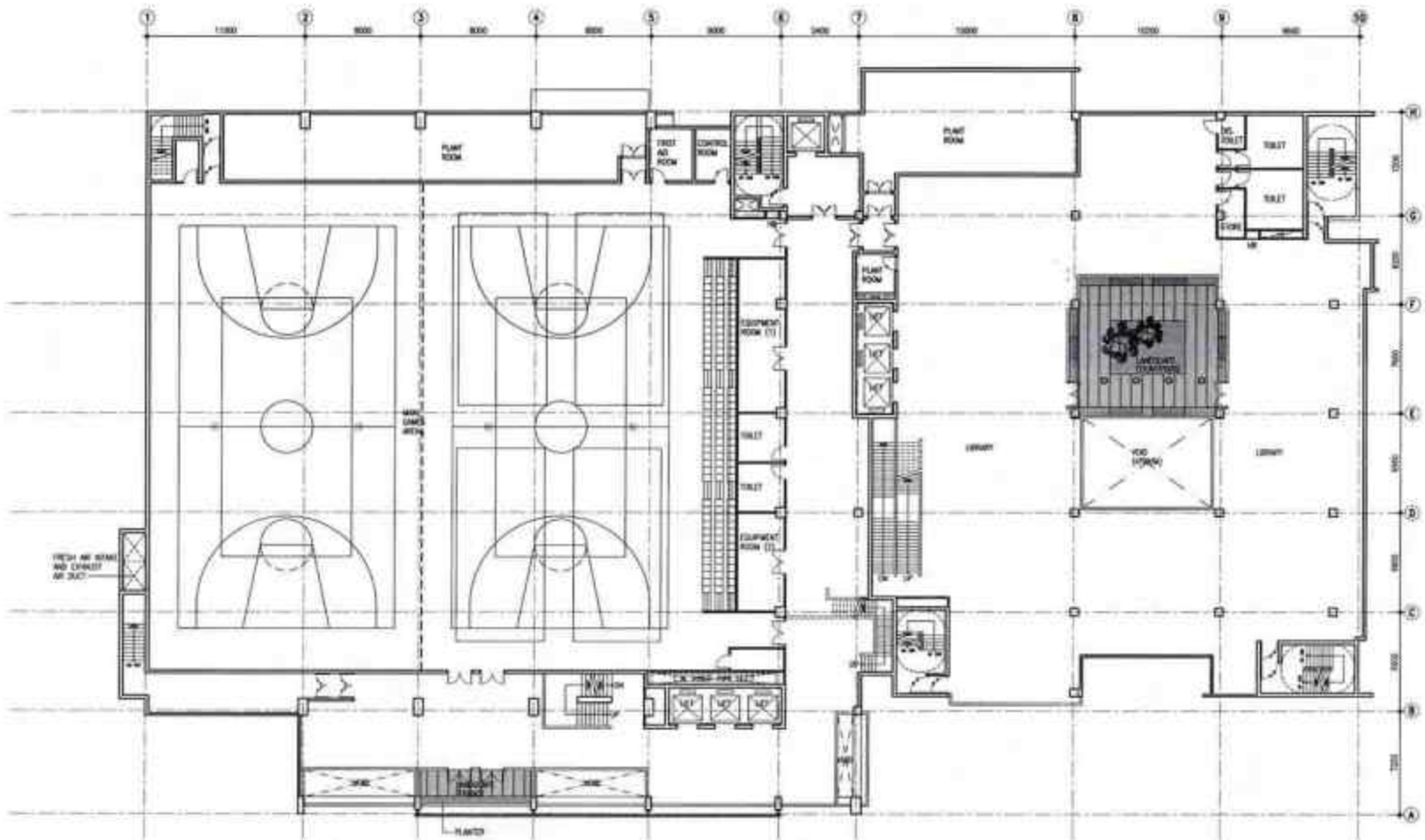
NO.	DATE	BY	CHKD.
1	22/1/07	W.L. CHAN	22/1/07
2	22/1/07	E.H. CHAN	22/1/07
3	28/2/07	TAR	28/2/07
4	28/2/07	A. SHAN	28/2/07
5	28/2/07	A. SHAN	28/2/07
6	28/2/07	A. SHAN	28/2/07
7	28/2/07	A. SHAN	28/2/07
8	28/2/07	A. SHAN	28/2/07
9	28/2/07	A. SHAN	28/2/07
10	28/2/07	A. SHAN	28/2/07
11	28/2/07	A. SHAN	28/2/07
12	28/2/07	A. SHAN	28/2/07
13	28/2/07	A. SHAN	28/2/07
14	28/2/07	A. SHAN	28/2/07
15	28/2/07	A. SHAN	28/2/07
16	28/2/07	A. SHAN	28/2/07
17	28/2/07	A. SHAN	28/2/07
18	28/2/07	A. SHAN	28/2/07
19	28/2/07	A. SHAN	28/2/07
20	28/2/07	A. SHAN	28/2/07
21	28/2/07	A. SHAN	28/2/07
22	28/2/07	A. SHAN	28/2/07
23	28/2/07	A. SHAN	28/2/07
24	28/2/07	A. SHAN	28/2/07
25	28/2/07	A. SHAN	28/2/07
26	28/2/07	A. SHAN	28/2/07
27	28/2/07	A. SHAN	28/2/07
28	28/2/07	A. SHAN	28/2/07
29	28/2/07	A. SHAN	28/2/07
30	28/2/07	A. SHAN	28/2/07
31	28/2/07	A. SHAN	28/2/07
32	28/2/07	A. SHAN	28/2/07
33	28/2/07	A. SHAN	28/2/07
34	28/2/07	A. SHAN	28/2/07
35	28/2/07	A. SHAN	28/2/07
36	28/2/07	A. SHAN	28/2/07
37	28/2/07	A. SHAN	28/2/07
38	28/2/07	A. SHAN	28/2/07
39	28/2/07	A. SHAN	28/2/07
40	28/2/07	A. SHAN	28/2/07
41	28/2/07	A. SHAN	28/2/07
42	28/2/07	A. SHAN	28/2/07
43	28/2/07	A. SHAN	28/2/07
44	28/2/07	A. SHAN	28/2/07
45	28/2/07	A. SHAN	28/2/07
46	28/2/07	A. SHAN	28/2/07
47	28/2/07	A. SHAN	28/2/07
48	28/2/07	A. SHAN	28/2/07
49	28/2/07	A. SHAN	28/2/07
50	28/2/07	A. SHAN	28/2/07
51	28/2/07	A. SHAN	28/2/07
52	28/2/07	A. SHAN	28/2/07
53	28/2/07	A. SHAN	28/2/07
54	28/2/07	A. SHAN	28/2/07
55	28/2/07	A. SHAN	28/2/07
56	28/2/07	A. SHAN	28/2/07
57	28/2/07	A. SHAN	28/2/07
58	28/2/07	A. SHAN	28/2/07
59	28/2/07	A. SHAN	28/2/07
60	28/2/07	A. SHAN	28/2/07
61	28/2/07	A. SHAN	28/2/07
62	28/2/07	A. SHAN	28/2/07
63	28/2/07	A. SHAN	28/2/07
64	28/2/07	A. SHAN	28/2/07
65	28/2/07	A. SHAN	28/2/07
66	28/2/07	A. SHAN	28/2/07
67	28/2/07	A. SHAN	28/2/07
68	28/2/07	A. SHAN	28/2/07
69	28/2/07	A. SHAN	28/2/07
70	28/2/07	A. SHAN	28/2/07
71	28/2/07	A. SHAN	28/2/07
72	28/2/07	A. SHAN	28/2/07
73	28/2/07	A. SHAN	28/2/07
74	28/2/07	A. SHAN	28/2/07
75	28/2/07	A. SHAN	28/2/07
76	28/2/07	A. SHAN	28/2/07
77	28/2/07	A. SHAN	28/2/07
78	28/2/07	A. SHAN	28/2/07
79	28/2/07	A. SHAN	28/2/07
80	28/2/07	A. SHAN	28/2/07
81	28/2/07	A. SHAN	28/2/07
82	28/2/07	A. SHAN	28/2/07
83	28/2/07	A. SHAN	28/2/07
84	28/2/07	A. SHAN	28/2/07
85	28/2/07	A. SHAN	28/2/07
86	28/2/07	A. SHAN	28/2/07
87	28/2/07	A. SHAN	28/2/07
88	28/2/07	A. SHAN	28/2/07
89	28/2/07	A. SHAN	28/2/07
90	28/2/07	A. SHAN	28/2/07
91	28/2/07	A. SHAN	28/2/07
92	28/2/07	A. SHAN	28/2/07
93	28/2/07	A. SHAN	28/2/07
94	28/2/07	A. SHAN	28/2/07
95	28/2/07	A. SHAN	28/2/07
96	28/2/07	A. SHAN	28/2/07
97	28/2/07	A. SHAN	28/2/07
98	28/2/07	A. SHAN	28/2/07
99	28/2/07	A. SHAN	28/2/07
100	28/2/07	A. SHAN	28/2/07

TIN SHUI WAN PUBLIC LIBRARY CUM INDOOR RECREATION CENTRE	AR/3333/TP/07004 1:300
ARCHITECTURAL BRANCH	
ARCHITECTURAL SERVICES DEPARTMENT	
1ST FLOOR PLAN	

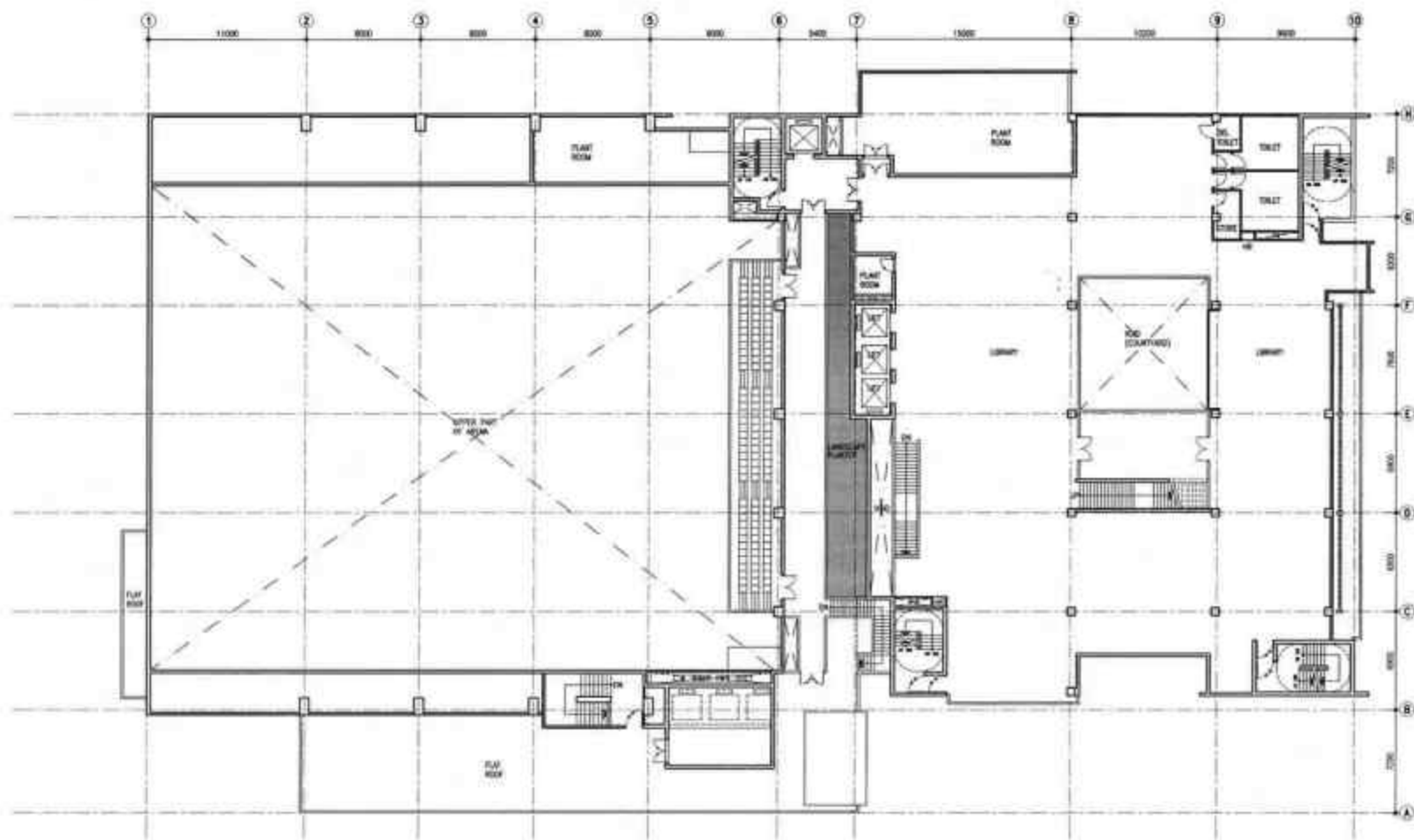


NO.	DATE	BY
1	21/1/07	W. L. YIP
2	21/1/07	C. K. CHAN
3	20/2/07	T. CHAN
4	20/2/07	A. WONG
5	20/1/07	J. WONG
6	20/1/07	J. WONG
7	20/1/07	J. WONG
8	20/1/07	J. WONG
9	20/1/07	J. WONG
10	20/1/07	J. WONG
11	20/1/07	J. WONG
12	20/1/07	J. WONG
13	20/1/07	J. WONG
14	20/1/07	J. WONG
15	20/1/07	J. WONG
16	20/1/07	J. WONG
17	20/1/07	J. WONG
18	20/1/07	J. WONG
19	20/1/07	J. WONG
20	20/1/07	J. WONG

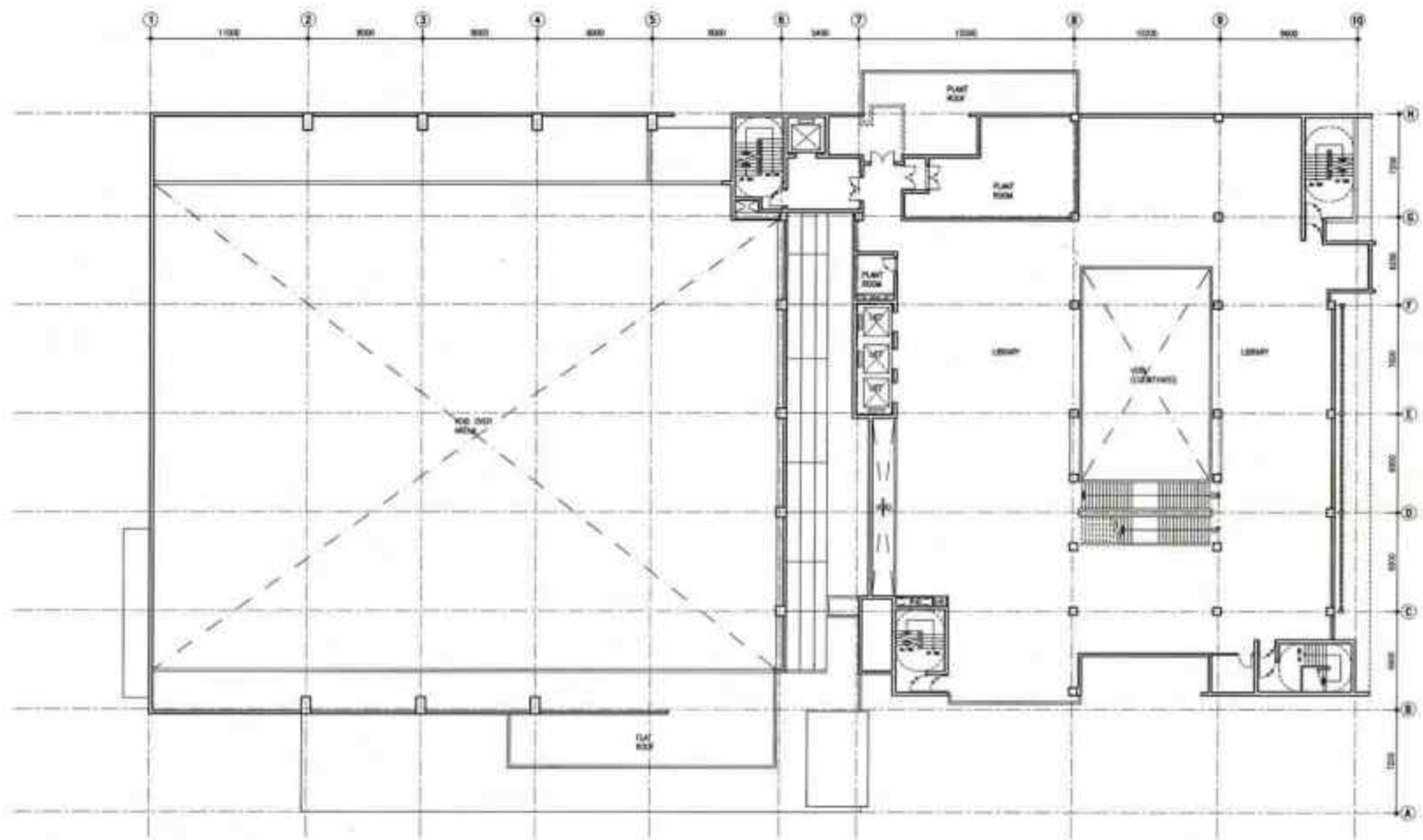
<p>TIN SHUI WAI PUBLIC LIBRARY INDOOR RECREATION CENTRE</p>	<p>NO. 40/333/TP/0705</p>	<p>1:300</p>
<p>ARCHITECTURAL BRANCH</p>		
<p>ARCHITECTURAL SERVICES DEPARTMENT</p>		



Project: TIN SHUI WAI PUBLIC LIBRARY AND INDOOR RECREATION CENTRE Drawing No: AB/3333/TP/GP006 Scale: 1:300		ARCHITECTURAL BRANCH  ARCHITECTURAL SERVICES DEPARTMENT
Date: 22/1/2017 Drawn by: Y.H. CHAN Checked by: Y.H. CHAN Title: 3RD FLOOR PLAN		



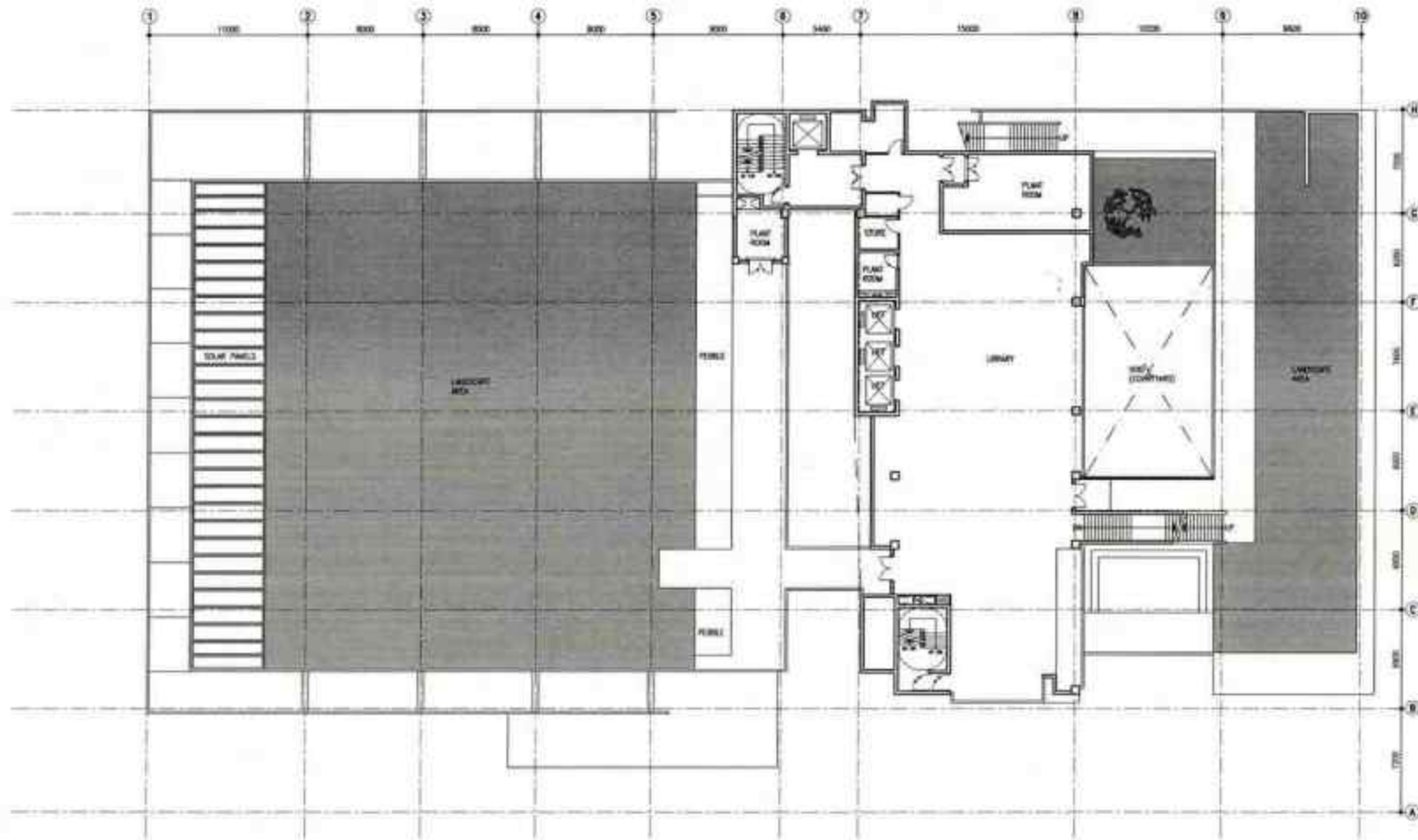
DRAWN BY DATE CHECKED BY DATE PROJECT NO. SHEET NO.	W.L. LAI 20/3/07	TIN SHUI WAN PUBLIC LIBRARY INDOOR RECREATION CENTRE	AR/3333/TP/0P007	1:300
	S.W. CHAN 23/3/07			
	1. SH 2. SH 3. SH			
	4. SH 5. SH 6. SH			
PROJECT NO. SHEET NO.	AR24/3333/TP/0P007/6	4TH FLOOR PLAN	ARCHITECTURAL BRANCH	ARCHITECTURAL SERVICES DEPARTMENT



Project No. 1000000000	Date 20/07/07	Title TW SAK WU PUBLIC LIBRARY CUM INDOOR RECREATION CENTRE	Drawing No. AR/3333/P/CP008	Scale 1:300
Drawing No. AR/3333/P/CP008	Date 20/07/07	Title 5TH FLOOR PLAN	Drawing No. AR/3333/P/CP008	Scale 1:300
Drawing No. AR/3333/P/CP008	Date 20/07/07	Title 5TH FLOOR PLAN	Drawing No. AR/3333/P/CP008	Scale 1:300



ARCHITECTURAL SERVICES DEPARTMENT



PROJECT: TIN SHUI WAI PUBLIC LIBRARY & INDOOR RECREATION CENTRE		DRAWING NO: AR/S333/TP/02009	SCALE: 1:300
ARCHITECTURAL BRANCH		ARCHITECTURAL SERVICES DEPARTMENT	
DRAWN BY: W.L. LAM DATE: 23/3/07		CHECKED BY: E.W. CHAN DATE: 23/3/07	
PROJECT NO: AR/S333/TP/02009		SHEET NO: 1 OF 1	
DRAWING NO: AR/S333/TP/02009		TITLE: 1ST FLOOR PLAN	
PROJECT NO: AR/S333/TP/02009		DATE: 23/3/07	
DRAWING NO: AR/S333/TP/02009		SCALE: 1:300	
PROJECT NO: AR/S333/TP/02009		SHEET NO: 1 OF 1	

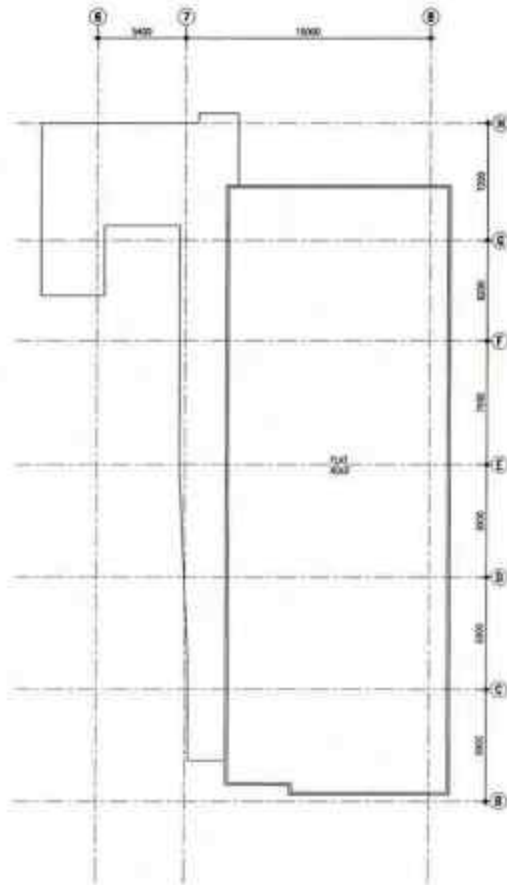


SERVICES FLOOR PLAN (8TH FLOOR)

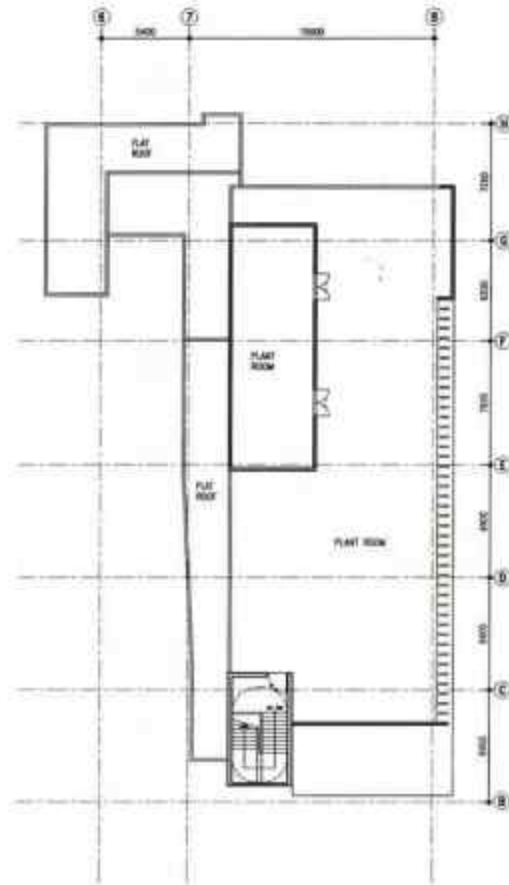


7TH FLOOR PLAN

Project No. 4224/3333/TP/010/W	Date 08/01	No. 1/10 12/01/17	TIN SHI NG PUBLIC LIBRARY CDM INDOOR RECREATION CENTRE	No. AR/3333/TP/010 1/300
		No. 2/10 12/01/17		ARCHITECTURAL BRANCH
Project Name 7TH FLOOR PLAN AND SERVICES FLOOR PLAN		Architectural Branch  ARCHITECTURAL SERVICES DEPARTMENT		



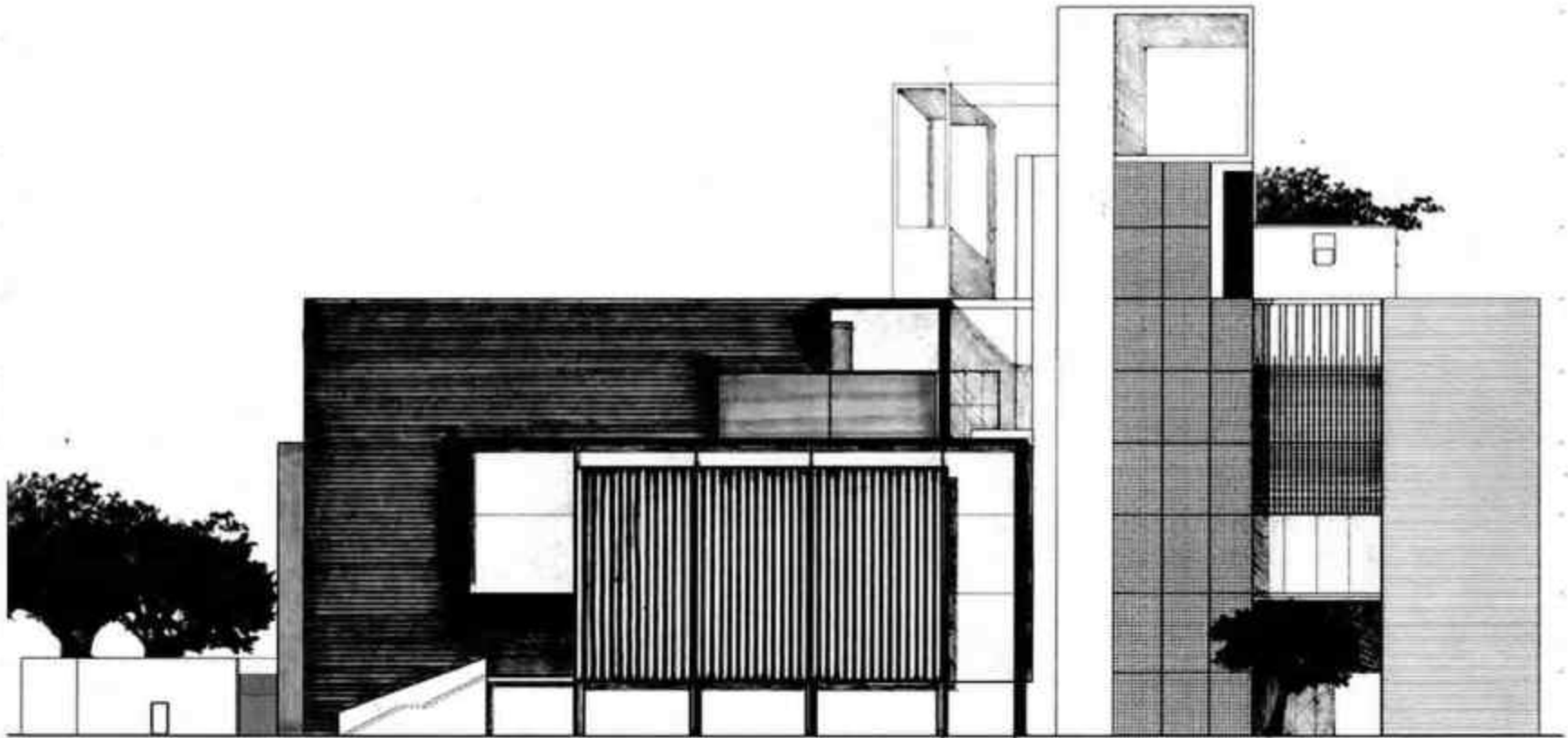
UPPER ROOF PLAN



ROOF PLAN

Project No. 1024/333/14/102/W	Date 23/3/07	Title TIN SHI WU PUBLIC LIBRARY CUM INDOOR RECREATION CENTRE	Drawing No. AR/3333/TP/GP011	Scale 1:300
	Date 23/3/07			
Author S. B. CHAN	Designer S. B. CHAN	Checker S. B. CHAN	Approver S. B. CHAN	Date 23/3/07
Drawing Title ROOF PLAN AND UPPER ROOF PLAN		Department ARCHITECTURAL BRANCH		
Drawing No. AR/3333/TP/GP011		Department ARCHITECTURAL SERVICES DEPARTMENT		


ROOF



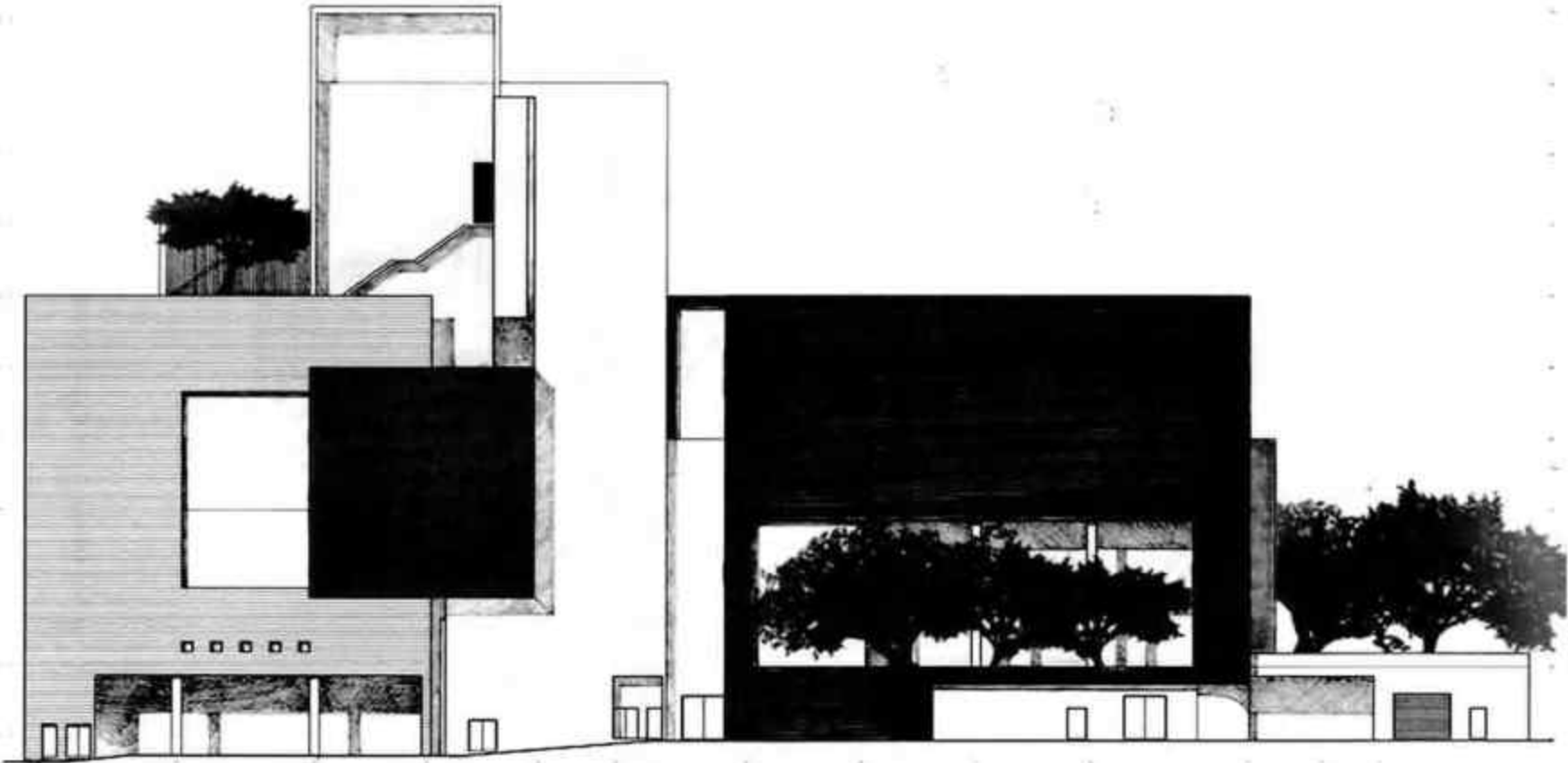
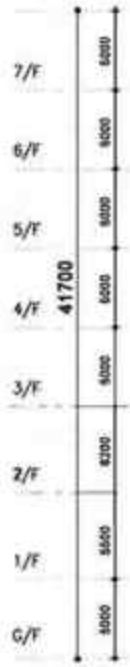
Author	W. L. LI	22/3/07
Checker	K. K. CHAN	23/3/07
Designer	Y. H. T. TAM	26/3/07
Drawn by	Y. H. T. TAM	26/3/07
Project number	4004/3333/TP/012	
Scale	1:300	
Sheet no.	01	

TIN SHUI WAI PUBLIC LIBRARY
 INDOOR RECREATION CENTRE

FRONT ELEVATION

Project No.	40/3333/TP/012	Scale	1:300
ARCHITECTURAL BRANCH			
 ARCHITECTURAL SERVICES DEPARTMENT			

ROOF



NO.	DATE	DESCRIPTION
1	22/5/07	REV. 1.00
2	22/5/07	REV. 1.01
3	22/5/07	REV. 1.02
4	22/5/07	REV. 1.03
5	22/5/07	REV. 1.04
6	22/5/07	REV. 1.05
7	22/5/07	REV. 1.06
8	22/5/07	REV. 1.07
9	22/5/07	REV. 1.08
10	22/5/07	REV. 1.09
11	22/5/07	REV. 1.10
12	22/5/07	REV. 1.11
13	22/5/07	REV. 1.12
14	22/5/07	REV. 1.13
15	22/5/07	REV. 1.14
16	22/5/07	REV. 1.15
17	22/5/07	REV. 1.16
18	22/5/07	REV. 1.17
19	22/5/07	REV. 1.18
20	22/5/07	REV. 1.19
21	22/5/07	REV. 1.20
22	22/5/07	REV. 1.21
23	22/5/07	REV. 1.22
24	22/5/07	REV. 1.23
25	22/5/07	REV. 1.24
26	22/5/07	REV. 1.25
27	22/5/07	REV. 1.26
28	22/5/07	REV. 1.27
29	22/5/07	REV. 1.28
30	22/5/07	REV. 1.29
31	22/5/07	REV. 1.30
32	22/5/07	REV. 1.31
33	22/5/07	REV. 1.32
34	22/5/07	REV. 1.33
35	22/5/07	REV. 1.34
36	22/5/07	REV. 1.35
37	22/5/07	REV. 1.36
38	22/5/07	REV. 1.37
39	22/5/07	REV. 1.38
40	22/5/07	REV. 1.39
41	22/5/07	REV. 1.40
42	22/5/07	REV. 1.41
43	22/5/07	REV. 1.42
44	22/5/07	REV. 1.43
45	22/5/07	REV. 1.44
46	22/5/07	REV. 1.45
47	22/5/07	REV. 1.46
48	22/5/07	REV. 1.47
49	22/5/07	REV. 1.48
50	22/5/07	REV. 1.49
51	22/5/07	REV. 1.50
52	22/5/07	REV. 1.51
53	22/5/07	REV. 1.52
54	22/5/07	REV. 1.53
55	22/5/07	REV. 1.54
56	22/5/07	REV. 1.55
57	22/5/07	REV. 1.56
58	22/5/07	REV. 1.57
59	22/5/07	REV. 1.58
60	22/5/07	REV. 1.59
61	22/5/07	REV. 1.60
62	22/5/07	REV. 1.61
63	22/5/07	REV. 1.62
64	22/5/07	REV. 1.63
65	22/5/07	REV. 1.64
66	22/5/07	REV. 1.65
67	22/5/07	REV. 1.66
68	22/5/07	REV. 1.67
69	22/5/07	REV. 1.68
70	22/5/07	REV. 1.69
71	22/5/07	REV. 1.70
72	22/5/07	REV. 1.71
73	22/5/07	REV. 1.72
74	22/5/07	REV. 1.73
75	22/5/07	REV. 1.74
76	22/5/07	REV. 1.75
77	22/5/07	REV. 1.76
78	22/5/07	REV. 1.77
79	22/5/07	REV. 1.78
80	22/5/07	REV. 1.79
81	22/5/07	REV. 1.80
82	22/5/07	REV. 1.81
83	22/5/07	REV. 1.82
84	22/5/07	REV. 1.83
85	22/5/07	REV. 1.84
86	22/5/07	REV. 1.85
87	22/5/07	REV. 1.86
88	22/5/07	REV. 1.87
89	22/5/07	REV. 1.88
90	22/5/07	REV. 1.89
91	22/5/07	REV. 1.90
92	22/5/07	REV. 1.91
93	22/5/07	REV. 1.92
94	22/5/07	REV. 1.93
95	22/5/07	REV. 1.94
96	22/5/07	REV. 1.95
97	22/5/07	REV. 1.96
98	22/5/07	REV. 1.97
99	22/5/07	REV. 1.98
100	22/5/07	REV. 1.99
101	22/5/07	REV. 2.00


PROJECT NO.	AR/S333/TP/GP013	SCALE	1:300
PROJECT NAME	TIN SHAI NW PUBLIC LIBRARY CLIM INDOOR RECREATION CENTRE	DATE	
ARCHITECT	ARCHITECTURAL BRANCH		
DEPARTMENT	ARCHITECTURAL SERVICES DEPARTMENT		
REAR ELEVATION			

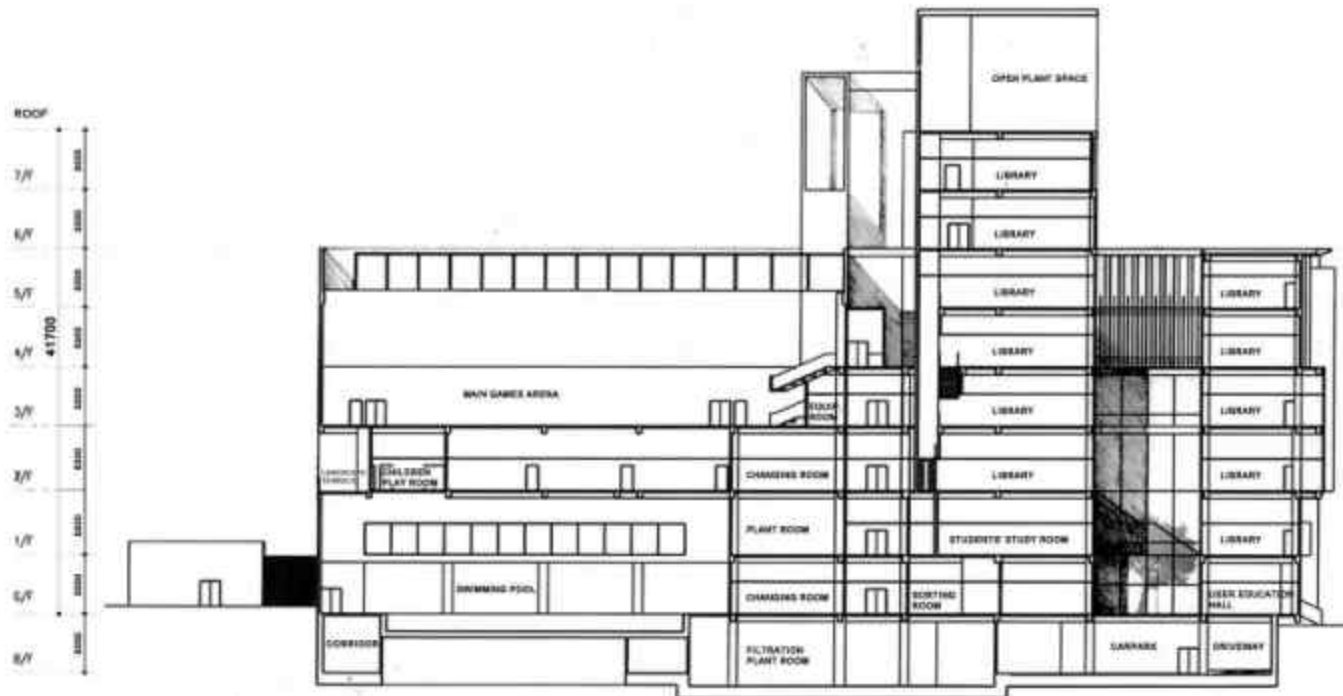


ROOF
 7/F 6000
 6/F 6000
 5/F 6000
 4/F 6000
 3/F 6000
 2/F 6000
 1/F 6000
 G/F 6000
 41700

Author	W. LI	23/7/07
Check	K. M. CHAN	23/7/07
Design	W. LI	20/7/07
Drawn	A. HO	20/7/07
Project	T. HO	20/7/07
Scale	1:500	
Sheet No.	AS/3333/09/02014	
Project No.	AS/3333/09/02014	
Revision		

TIN SHI WAI PUBLIC LIBRARY
 CUM INDOOR RECREATION CENTRE
 SOUTH ELEVATION

Project No.	AS/3333/09/02014	Scale	1:500
ARCHITECTURAL BRANCH			
 ARCHITECTURAL SERVICES DEPARTMENT			



DEVELOPMENT SCHEDULE			
SITE AREA	APPROXIMATELY 5474m ²	BUILDING HEIGHT	NOT EXCEEDING 48m (INCL. ONE BASEMENT)
LIBRARY GFA	NOT MORE THAN 9500m ²	SITE COVERAGE	NOT MORE THAN 77.5%
INDOOR RECREATION CENTRE GFA	NOT MORE THAN 7550m ²	PUBLIC OPEN SPACE	NOT LESS THAN 900 m ²
TOTAL GFA	NOT MORE THAN 17050m ²	ANTICIPATED POPULATION	NOT MORE THAN 4400 PERSONS
PARKING FOR PRIVATE VEHICLE (GUEST ONLY)	NOT MORE THAN 4		
PARKING FOR COACH	RANGING FROM 1 TO 3		
LOADING AND UNLOADING	RANGING FROM 1 TO 3		
NO. OF STOREYS	NOT EXCEEDING 10 (INCL. ONE BASEMENT)		

DATE	23/3/07
BY	J. J. J.
DATE	23/3/07
BY	J. J. J.
DATE	23/3/07
BY	J. J. J.
DATE	23/3/07
BY	J. J. J.

THE SHAW INN PUBLIC LIBRARY
 CUM INDOOR RECREATION CENTRE
 SECTION A-A AND
 DEVELOPMENT SCHEDULE FOR
 SECTION 16 APPLICATION

46/3333/09/09/015
 ARCHITECTURAL BRANCH
 ARCHITECTURAL SERVICES DEPARTMENT