

Designing Hong Kong: Central Harbourfront

P2 is a dual two lane road.

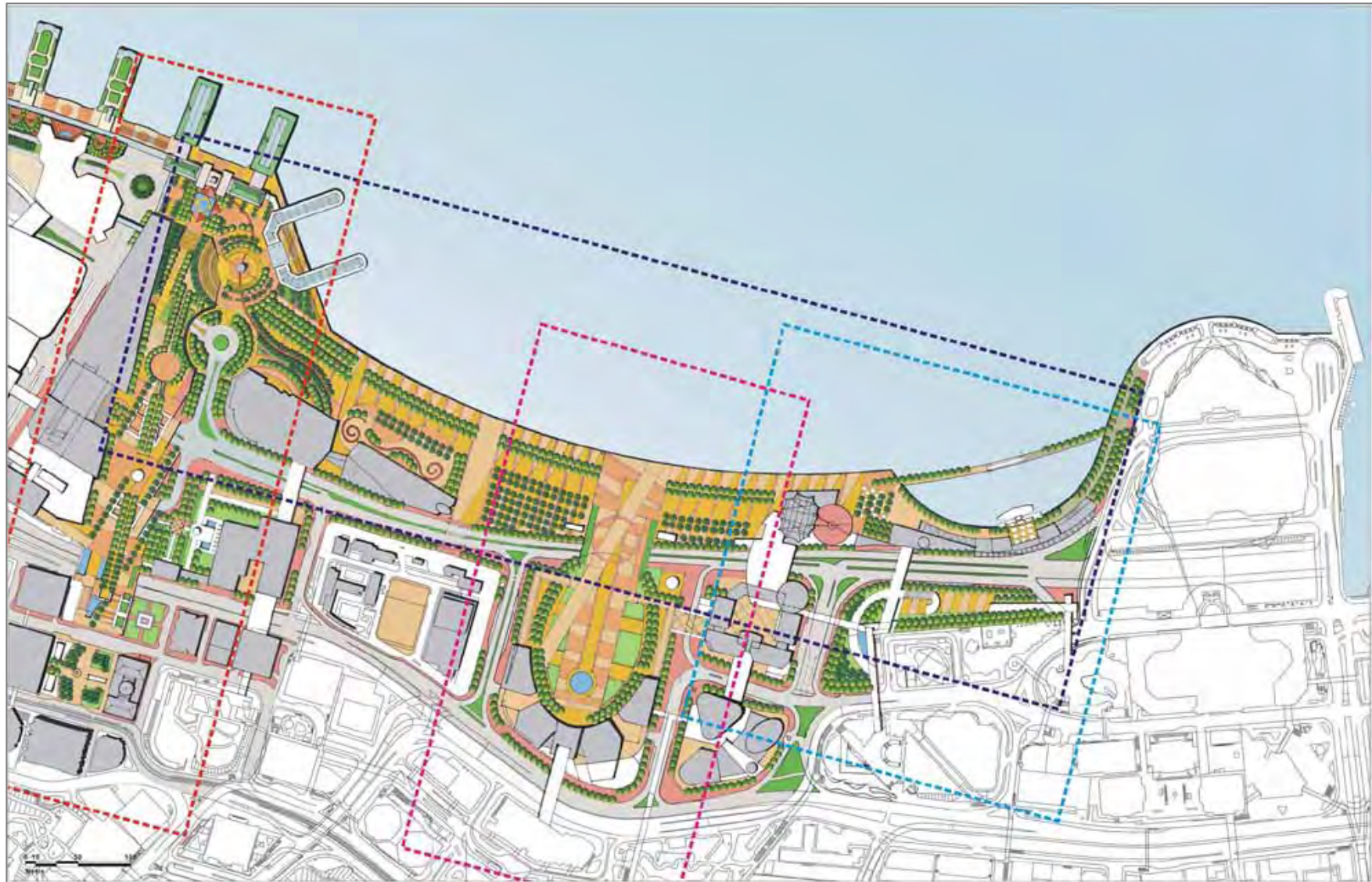
Connaught Road is a dual three lane road.


Why is P2 wider?

There is space for P2 and Queen's Pier in situ!

LegCo briefing – 23 January 2006

2003 Government layout



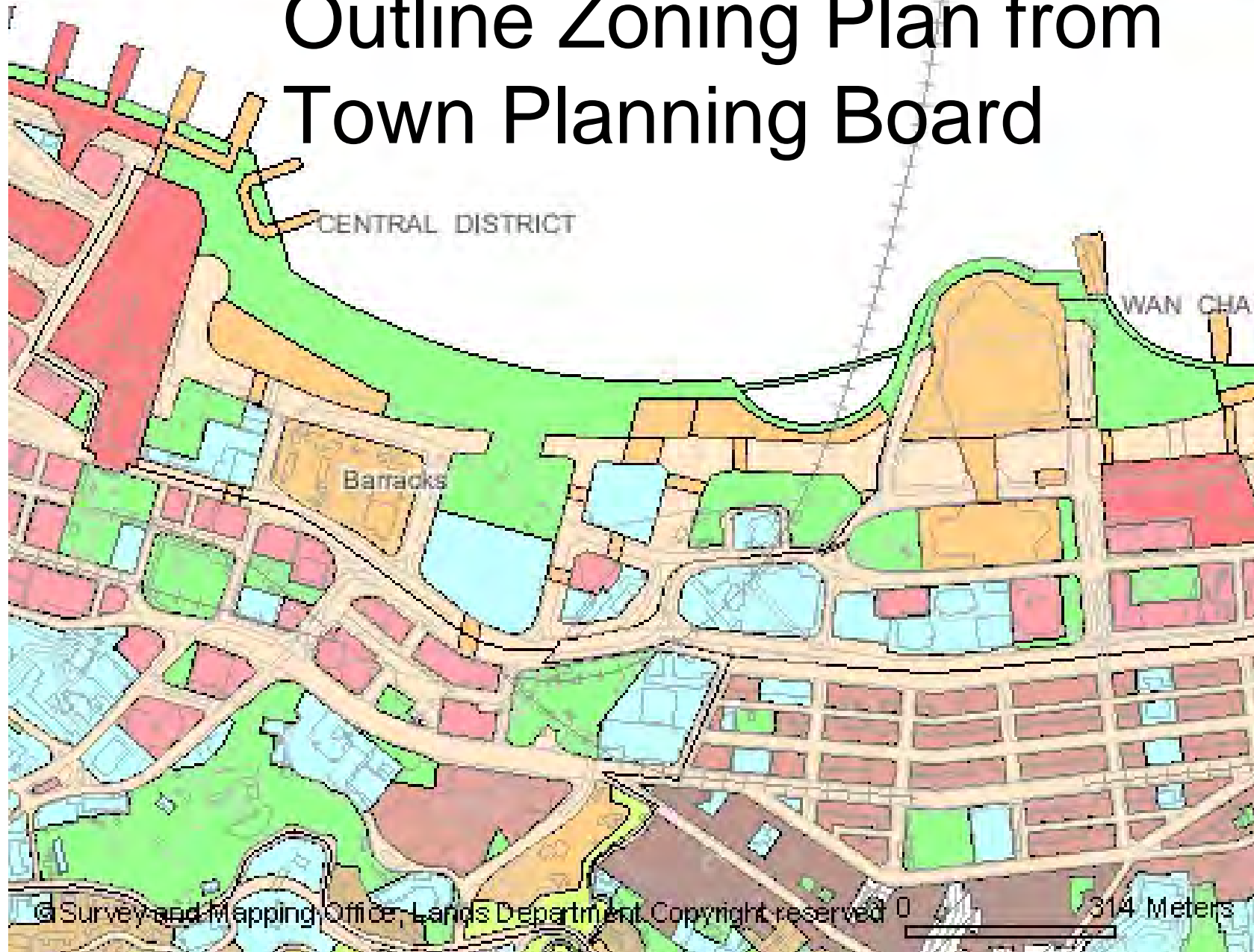
An aerial photograph of a road network with various annotations. A red dashed line runs vertically through the center. A red solid line runs horizontally across the middle. A red square is placed on the horizontal line to the left of the vertical line. A red double-headed arrow points from the horizontal line to the vertical line, with a white question mark next to it. Another red square is placed on the horizontal line further to the left. The background shows buildings, green spaces, and other roads.

P2 is dual two lanes, why allocate so much land?

Connaught Road is dual three lanes



Outline Zoning Plan from Town Planning Board

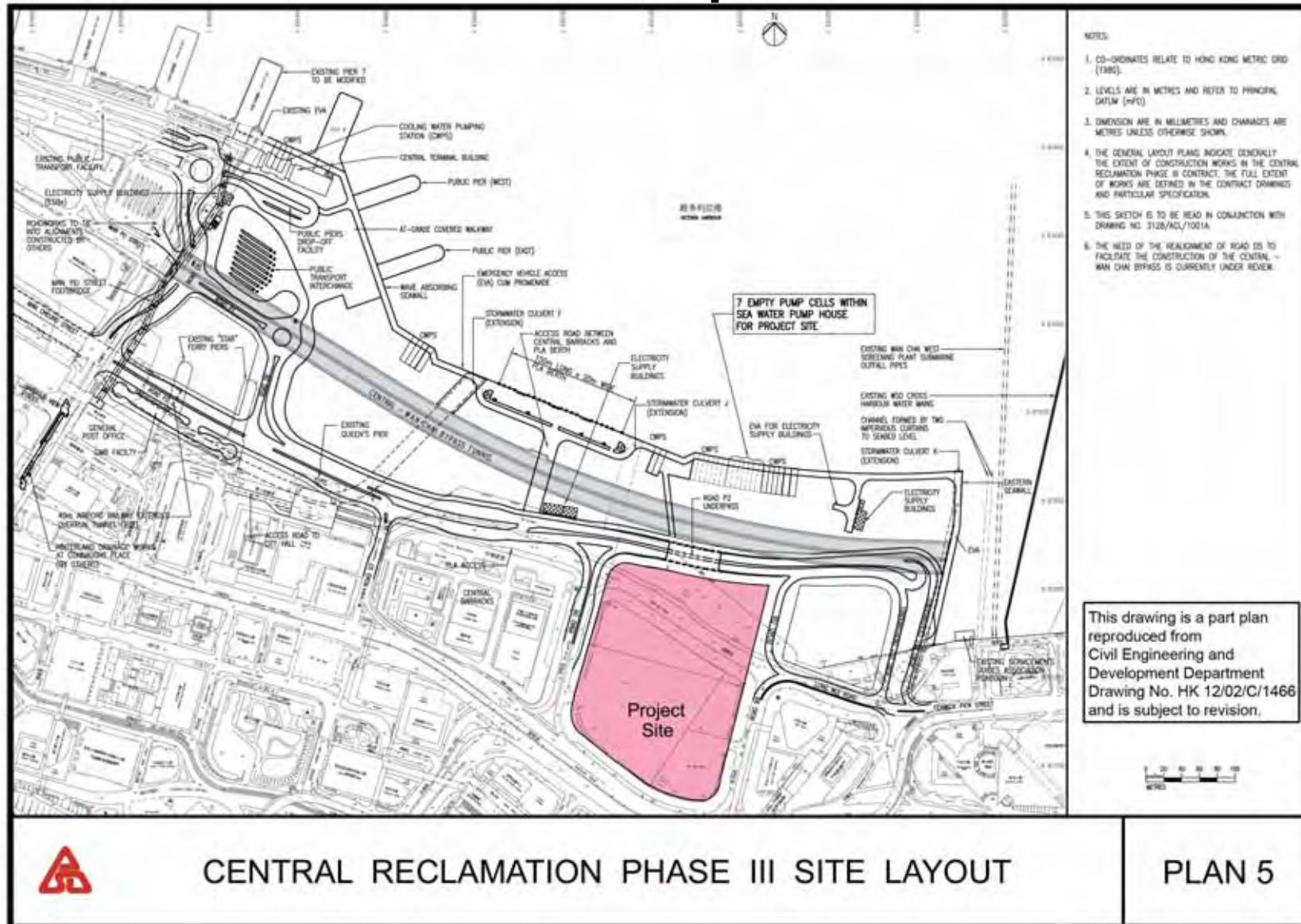


P2 is dual two lanes, why allocate so much land?



Connaught Road is dual three lanes

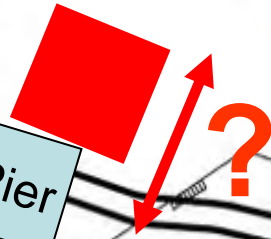
2006 site layout from CEDD in Tamar Tender Specifications



Keep Queen's Pier in situ!

EXISTING
QUEEN'S PIER

Queen's Pier



P2 is dual two lanes, why allocate so much land?

Connaught Road is dual three lanes

