

**For information  
on 5 June 2007**

**Legislative Council Panel on Security**

**Proposed Merger of Tseung Kwan O and  
Sai Kung Police Divisions into a Police District**

**Purpose**

This paper sets out the progress of the Police's consideration of the proposed merger of the Tseung Kwan O and Sai Kung Divisions<sup>1</sup> into a District.

**Background**

2. The Tseung Kwan O Division belongs to the Kowloon East Region. After the amalgamation of the Wong Tai Sin and Tsz Wan Shan Divisions in 2006, the Region now comprises three land Districts, i.e., Kwun Tong District, Wong Tai Sin District and Sau Mau Ping District, with a total of six Divisions –

- (a) Kwun Tong District
  - (i) Tseung Kwan O
  - (ii) Kwun Tong
- (b) Wong Tai Sin District
  - (iii) Wong Tai Sin
  - (iv) Sai Kung
- (c) Sau Mau Ping District
  - (v) Sau Mau Ping
  - (vi) Ngau Tau Kok

---

<sup>1</sup> For the purpose of this paper, unless otherwise indicated, all references to “regions”, “districts” and “divisions” refer to Police regions, Police districts and Police divisions respectively.

A map showing the boundary alignment of these Districts and Divisions is at the **Annex**.

3. The Police have been keeping the boundary alignment of their Districts and Divisions under close review in order to ensure optimum response to changing policing needs. In the process, the Police take into account a number of factors, including demographic changes, the main activities of the area (commercial, industrial, residential, agricultural activities, etc.), crime rates and trends, as well as planned developments.

4. With respect to the merger proposal for the Tseung Kwan O Division and Sai Kung Division, the following considerations are relevant.

### **Development of Tseung Kwan O New Town**

#### *Demographical changes*

5. Since the establishment of the Tseung Kwan O Division in 1992, the population within the boundary of the Police Division has increased from around 100 000 to 380 000 currently. However, the latest projection by the Planning Department is that the increase in population will slow down. For Tseung Kwan O New Town, the projected population intake will be about 35 000 in the next five years, with one new public housing development and four private housing developments completed / partially completed by then.

#### *Crime rates*

6. Given the fast increase in population in Tseung Kwan O over the years, the Police have closely monitored the policing needs of the area, and strengthened their establishment for the Division accordingly. A total of 106 additional frontline police posts have been created and allocated to the Division since 1999, and another 13 are planned in the financial year 2007 / 2008. Moreover, to maintain their operational responsiveness, the Police flexibly deploy other district and regional resources such as Emergency Unit, Police Tactical Unit and Traffic and Crime personnel to the Tseung Kwan O Division on a need basis. As a result, Tseung Kwan O's crime rate remains low while the detection rate is steady when compared to other divisions in the Kowloon East Region, as shown in the table below. Generally, the area enjoys good law and

order.

| Police Divisions            | 2004        |                | 2005        |                | 2006        |                |
|-----------------------------|-------------|----------------|-------------|----------------|-------------|----------------|
|                             | Crime Rate* | Detection Rate | Crime Rate* | Detection Rate | Crime Rate* | Detection Rate |
| <i>Tseung Kwan O</i>        | 694.5       | 41.2%          | 645.1       | 37.4%          | 801.9       | 40.9%          |
| Sai Kung                    | 1 740.4     | 22.4%          | 1 582.1     | 24.5%          | 1 535.9     | 27.2%          |
| Kwun Tong                   | 909.2       | 45.7%          | 890.4       | 41.5%          | 955.2       | 38.8%          |
| Sau Mau Ping                | 878.1       | 36.0%          | 894.9       | 36.7%          | 1 011.3     | 41.8%          |
| Ngau Tau Kok                | 1 555.2     | 35.5%          | 1 483.9     | 38.2%          | 1 593.5     | 37.7%          |
| Wong Tai Sin                | 880.2       | 38.7%          | 912.2       | 42.2%          | 961.9       | 38.5%          |
| <i>Crime Rate for HKSAR</i> | 1 199       | 43.6%          | 1 137       | 44.3%          | 1 183       | 44.6%          |

\* *Number of crimes per 100 000 population*

7. Nonetheless, in view of Tseung Kwan O's relatively large and growing population in absolute terms, the Police see a prima facie case of eventually merging the Tseung Kwan O Division with an adjoining area and upgrading the combined area into a District. The Police will draw up the implementation plan for this by taking into account the future developments in the Kowloon East Region as a whole. In this regard, the following developments in the Region are relevant.

### **Future Developments in Kowloon East**

#### *Kai Tak Development (KTD)*

8. The KTD is located within the boundary of the Kowloon East Region. According to the current development plan<sup>2</sup>, a new urban node will be created at Kai Tak, comprising of commercial / office, residential and Government developments; a multi-purpose stadium complex; a cruise terminal; and a Metro Park at the Kowloon East waterfront. It is projected that the development will accommodate a residential population of about 86 000 and a substantively sized transitory population, including tourists. The engineering feasibility study is on-going and scheduled for completion in late 2008. Thus, upon implementation, KTD will have a considerable impact on the policing requirement of the Kowloon East Region.

<sup>2</sup> As set out in draft Kai Tak Outline Zoning Plan No. S/K22/1 gazetted by the Town Planning Board in November 2006.

## *Sai Kung*

9. According to the current development plan<sup>3</sup>, the Sai Kung area will be developed into the “Leisure Garden of Hong Kong” which will attract more transitory visitors to the Sai Kung Town and Clear Water Bay areas – increasing from over 5 million in 1998 to over 7 million by 2016. This will have significant bearings on the proposed merging of the Tseung Kwan O and Sai Kung Divisions into a District.

## *Housing Developments in Choi Wan Road, Jordan Valley and Anderson Road, and Kwun Tong Town Centre Redevelopment*

10. A number of housing development / redevelopment projects planned in the Kowloon East Region are in progress. By 2010 / 2011, the proposed public housing projects near Choi Wan Road and Jordan Valley area would accommodate a population of about 35 000. By 2015 to 2017, there would also be a population intake of about 48 000 people in the public housing development projects at Anderson Road. In addition, the Kwun Tong Town Centre Redevelopment Project has commenced. Not taking into account the possible population change arising from the project, Kwun Tong is projected as the third most populous District Council District in Hong Kong, with the population within its boundary expected to increase from the current 581 900 to 650 600 by 2015<sup>4</sup>. These new pockets of population growth would be relevant factors affecting the Police’s consideration on the district boundaries within the Kowloon East Region.

## **Way Forward**

11. The Police will continue to press ahead with their consideration of the most appropriate boundaries within the Kowloon East Police Region in a holistic and methodical fashion, having regard to the urban development plans mentioned above, as well as the possible alignment of police region, district and division boundaries with those of the District Councils to achieve better synergy with the District Councils, District Fight Crime Committees and the local communities at divisional, district and regional levels. The Police aim to work out the details of the boundary realignment exercise for the Kowloon East Region soon after decisions are taken on the key urban development plans. They will then

---

<sup>3</sup> As set out in “Study on South East New Territories Development Strategy Review” endorsed by the Committee on Planning and Land Development in August 2001.

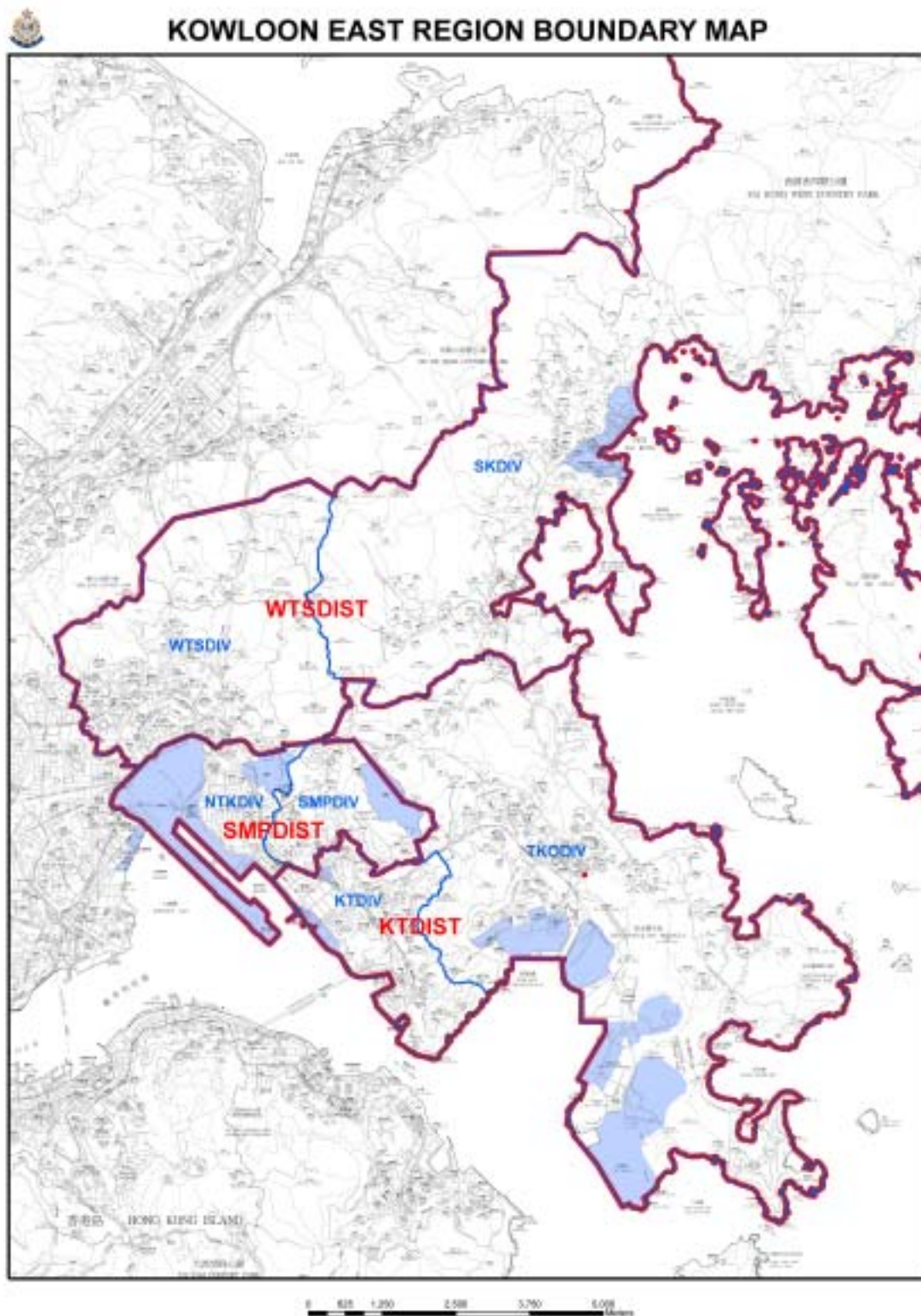
<sup>4</sup> From the “Projections of Population Distribution (2006-2015)” published by Planning Department in 2005.

be able to decide how the Tseung Kwan O Division should be merged with what adjoining area(s) to form a Police District.

12. In the interim, the Police will continue to closely monitor the law and order situation in Tseung Kwan O (and other areas within the Region), and strengthen their establishment in special areas, as necessary. In particular, the Police are continuing to examine the need for the further creation of frontline posts in Tseung Kwan O Division in the near future to further improve the police coverage of the Division and enhance their service to the population in the area.

**Security Bureau  
Hong Kong Police Force**

**May 2007**



**Legend**

- KTDIST - Kwun Tong District
- KTDIV - Kwun Tong Division
- NTKDIV - Ngau Tau Kok Division
- SKDIV - Sai Kung Division
- SMPDIST - Sau Mau Ping District
- SMPDIV - Sau Mau Ping Division
- TKODIV - Tseung Kwan O Division
- WTSDIST - Wong Tai Sin District
- WTSDIV - Wong Tai Sin Division

Areas in which urban development projects are planned