

LEGISLATIVE COUNCIL BRIEF

IMMIGRATION (ANCHORAGES AND LANDING PLACES) (AMENDMENT) ORDER 2007

INTRODUCTION

The Secretary for Security has made the Immigration (Anchorage and Landing Places) (Amendment) Order 2007 (“the Amendment Order”) under section 60 of Immigration Ordinance (Cap. 115). The purpose of the Amendment Order is to reflect certain minor alteration of the boundary of the Hong Kong International Airport Immigration Anchorage (“SkyPier”), an approved immigration anchorage (“AIA”) designated under the Immigration (Anchorage and Landing Places) Order (Cap. 115 sub.leg.C). A copy of the Amendment Order is at [Annex A](#).

BACKGROUND

2. To extend the catchment areas of the Hong Kong International Airport (“the airport”), the Airport Authority (“AA”) provides a cross-boundary ferry service exclusively for transit passengers linking the SkyPier to five ports at the Pearl River Delta (“PRD”), i.e. Shenzhen Fuyong, Dongguan, Shekou, Macao and Zhongshan. There are some 70 sailings everyday to and from the SkyPier to the five aforementioned PRD ports. The SkyPier is situated within the restricted area of the airport and is designated as an AIA under paragraph 2(1)(b) of the Immigration (Anchorage and Landing Places) Order.

3. Under the present arrangement, northbound ferries convey air-to-sea transit passengers from the SkyPier to the PRD ports, whereas southbound ferries convey sea-to-air transit passengers from the PRD ports to the SkyPier for their onward transit to flights at the airport. Passengers travel between the Passenger Terminal Building of the airport and the SkyPier through bonded buses on a route which has been dedicated as restricted area and hence all transit passengers remain at all times within the restricted area. Since 30 November 2006, northbound sailings from either Macau Ferry Terminal or China Ferry Terminal, with prior arrangement with AA, could stop at the SkyPier to pick up air-to-sea transit passengers before their onward journeys to the PRD ports.

4. In 2006, passenger throughput at the SkyPier amounted to about 1.71 million as compared with 1.35 million in 2005 and 0.86 million in 2004.

5. In view of the continuing growth in the transit passenger throughput at the SkyPier, AA has started to build a permanent and expanded cross-boundary ferry terminal, known as SkyPier II, to replace the existing SkyPier. This requires a release of a portion of the land currently occupied by the existing SkyPier to facilitate the construction work. In view of such change and in view of the need to cope with the increasing cross-boundary ferry traffic before SkyPier II commences operation in 2008, AA intends to extend pontoons from the existing SkyPier for use as immigration anchorages as an interim measure. A plan showing the current and revised boundaries of the SkyPier is at **Annex B**.

6. As the changes mentioned in paragraph 5 above will affect the boundary of the SkyPier which is defined under Schedule 1A to the Immigration (Anchorage and Landing Places) Order, amendment to this Order is necessary.

THE AMENDMENT ORDER

7. **Clause 1** of the Amendment Order provides that the Order shall come into operation on 29 March 2007. **Clause 2** provides for the revised boundary of the Hong Kong International Airport Immigration Anchorage by way of coordinates, covering both the structure of the SkyPier and the adjacent waters in which pontoons will be extended for use as part of the SkyPier.

LEGISLATIVE TIMETABLE

8. The legislative timetable will be –

Publication in the Gazette	2 February 2007
Commencement of the Legal Notice	29 March 2007

IMPLICATIONS OF THE PROPOSAL

9. The Amendment Order is in conformity with the Basic Law, including the provisions concerning human rights.

10. The Amendment Order will not affect the current binding effect of the Immigration Ordinance (Cap. 115) and the subsidiary legislation made thereunder.

PUBLICITY

11. Spokesmen will be arranged to answer media and public enquiries.

ENQUIRY

12. For enquiry on the Amendment Order, please contact Mr Alan KM Chu, Principal Assistant Secretary for Security on 2810 2506. For enquiry on the SkyPier operation, please contact Mr Albert Tang, Principal Assistant Secretary for Economic Development and Labour on 2810 2674.

Security Bureau
Economic Development and Labour Bureau
2 February 2007

IMMIGRATION (ANCHORAGES AND LANDING PLACES) (AMENDMENT) ORDER 2007

(Made by the Secretary for Security under section 60 of the Immigration Ordinance (Cap. 115))

1. Commencement

This Order shall come into operation on 29 March 2007.

2. Schedule 1A amended

Schedule 1A to the Immigration (Anchorage and Landing Places) Order (Cap. 115 sub. leg. C) is amended by repealing item I and substituting –

- “ I. Hong Kong International Airport Immigration Anchorage The area comprising –
- (a) the area bounded by straight lines joining the following positions –
- (i) latitude 22° 19' 11.2" north,
longitude 113° 56' 38.9" east;
 - (ii) latitude 22° 19' 10.8" north,
longitude 113° 56' 41.0" east;
 - (iii) latitude 22° 19' 10.6" north,
longitude 113° 56' 40.9" east;
 - (iv) latitude 22° 19' 10.5" north,
longitude 113° 56' 40.7" east;
 - (v) latitude 22° 19' 10.4" north,
longitude 113° 56' 40.6" east;
 - (vi) latitude 22° 19' 10.0" north,
longitude 113° 56' 39.9" east;
 - (vii) latitude 22° 19' 7.2" north,
longitude 113° 56' 39.2" east;
 - (viii) latitude 22° 19' 6.7" north,
longitude 113° 56' 42.0" east;

- (ix) latitude 22° 19' 6.3" north,
longitude 113° 56' 41.9" east;
- (x) latitude 22° 19' 6.9" north,
longitude 113° 56' 39.2" east;
- (xi) latitude 22° 19' 6.2" north,
longitude 113° 56' 39.0" east;
- (xii) latitude 22° 19' 6.5" north,
longitude 113° 56' 37.6" east;
- (xiii) latitude 22° 19' 6.8" north,
longitude 113° 56' 37.7" east;
- (xiv) latitude 22° 19' 6.8" north,
longitude 113° 56' 37.6" east;
- (xv) latitude 22° 19' 6.9" north,
longitude 113° 56' 37.6" east;
- (xvi) latitude 22° 19' 8.1" north,
longitude 113° 56' 38.4" east;
- (xvii) latitude 22° 19' 8.2" north,
longitude 113° 56' 38.4" east;
- (xviii) latitude 22° 19' 8.3" north,
longitude 113° 56' 38.1" east;
- (xix) latitude 22° 19' 8.6" north,
longitude 113° 56' 38.2" east;
- (xx) latitude 22° 19' 8.6" north,
longitude 113° 56' 38.2" east;
- (xxi) latitude 22° 19' 8.6" north,
longitude 113° 56' 38.3" east;
- (xxii) latitude 22° 19' 8.7" north,
longitude 113° 56' 38.3" east;
- (xxiii) latitude 22° 19' 8.7" north,

longitude 113° 56' 38.4" east;
(xxiv) latitude 22° 19' 8.8" north,
longitude 113° 56' 38.4" east;
and

- (b) the area of the waters of Hong Kong bounded by the shore and straight lines joining the following positions –
- (i) latitude 22° 19' 8.9" north,
longitude 113° 56' 39.6" east;
 - (ii) latitude 22° 19' 7.8" north,
longitude 113° 56' 45.5" east;
 - (iii) latitude 22° 19' 3.2" north,
longitude 113° 56' 44.5" east;
 - (iv) latitude 22° 19' 4.3" north,
longitude 113° 56' 38.6" east.

Note : In this Schedule, a reference to the co-ordinates of a point is a reference to the co-ordinates of that point based on the World Geodetic System 1984 (WGS 84).”.

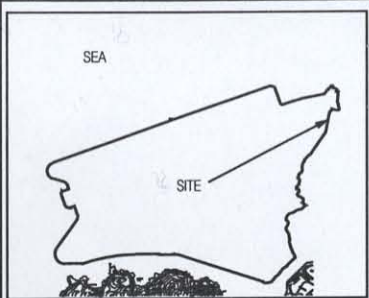
Secretary for Security

2007

Explanatory Note

This Order amends the description of the Hong Kong International Airport Immigration Anchorage to provide for its revised boundary as a result of the

alteration works at the SkyPier, and for the extension of pontoons from the SkyPier for use as temporary immigration anchorages during the construction of SkyPier II.

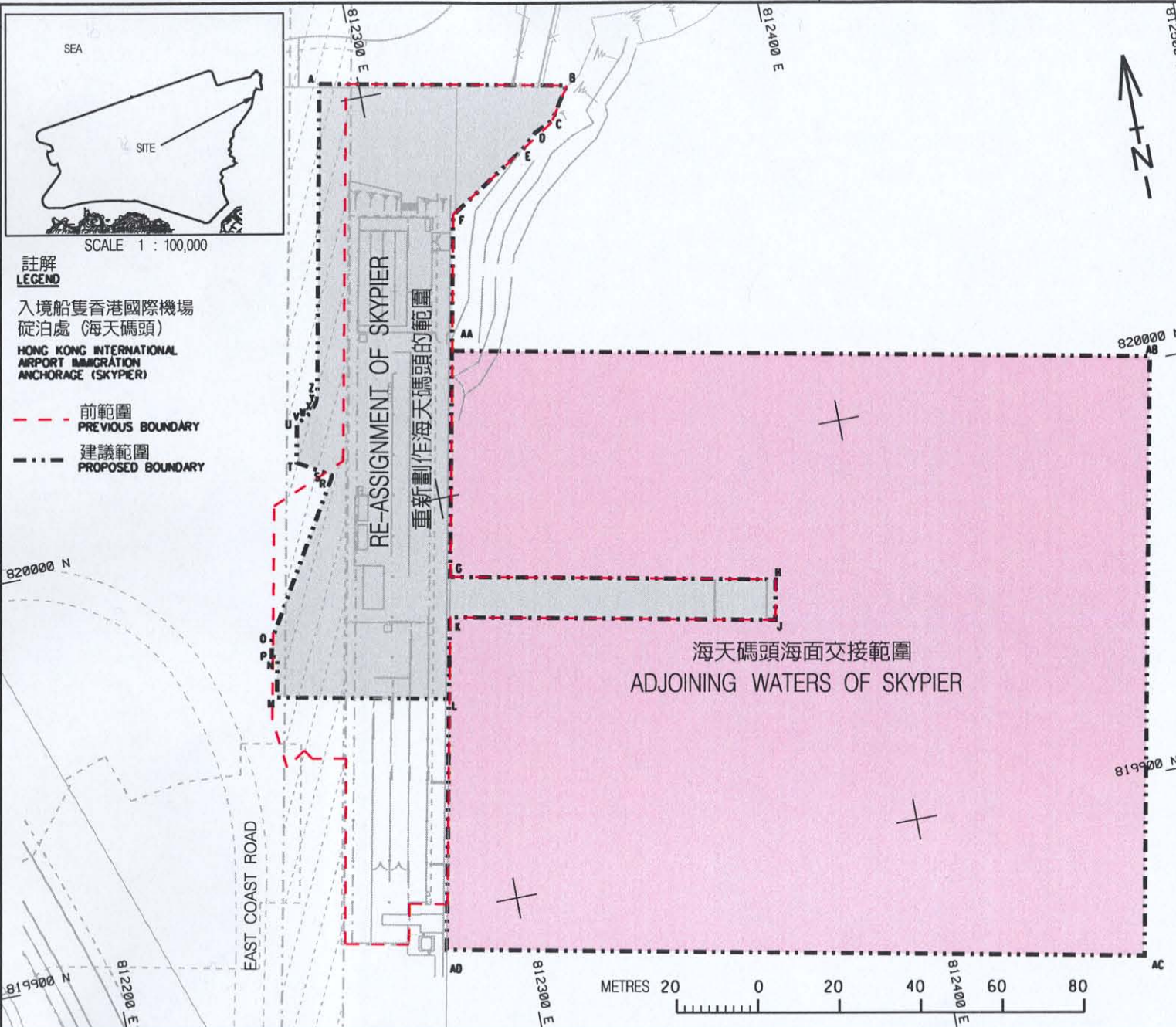


SCALE 1 : 100,000

註解
LEGEND

入境船隻香港國際機場
碇泊處 (海天碼頭)
HONG KONG INTERNATIONAL
AIRPORT IMMIGRATION
ANCHORAGE (SKYPIER)

- - - 前範圍
PREVIOUS BOUNDARY
- · - · 建議範圍
PROPOSED BOUNDARY



WGS84		WGS84		
LATITUDE	LONGITUDE	LATITUDE	LONGITUDE	
A	22° 19' 11.2"	113° 56' 38.9"	O 22° 19' 6.9"	113° 56' 37.6"
B	22° 19' 10.8"	113° 56' 41.0"	R 22° 19' 8.1"	113° 56' 38.4"
C	22° 19' 10.6"	113° 56' 40.9"	S 22° 19' 8.2"	113° 56' 38.4"
D	22° 19' 10.5"	113° 56' 40.7"	T 22° 19' 8.3"	113° 56' 38.1"
E	22° 19' 10.4"	113° 56' 40.6"	U 22° 19' 8.6"	113° 56' 38.2"
F	22° 19' 10.0"	113° 56' 39.9"	Y 22° 19' 8.6"	113° 56' 38.2"
G	22° 19' 7.2"	113° 56' 39.2"	W 22° 19' 8.6"	113° 56' 38.3"
H	22° 19' 6.7"	113° 56' 42.0"	X 22° 19' 8.7"	113° 56' 38.3"
J	22° 19' 6.3"	113° 56' 41.9"	Y 22° 19' 8.7"	113° 56' 38.4"
K	22° 19' 6.9"	113° 56' 39.2"	Z 22° 19' 8.8"	113° 56' 38.4"
L	22° 19' 6.2"	113° 56' 39.0"	AA 22° 19' 8.9"	113° 56' 39.6"
M	22° 19' 6.5"	113° 56' 37.6"	AB 22° 19' 7.8"	113° 56' 45.5"
N	22° 19' 6.8"	113° 56' 37.7"	AC 22° 19' 3.2"	113° 56' 44.5"
P	22° 19' 6.8"	113° 56' 37.6"	AD 22° 19' 4.3"	113° 56' 38.6"

NOEL	23-01-07
Rev.	Description
A	FIRST ISSUE

1 Cheong Yip Road,
Hong Kong International Airport,
Lantau, Hong Kong.

Tel : (852) 2188 7111
Fax : (852) 2824 0717

香港
機場管理局
AIRPORT
AUTHORITY
HONG KONG

Title RE-ASSIGNMENT OF IMMIGRATION ANCHORAGE
FOR SKYPIER
AND ADJOINING AREA OF LAND AND WATER
FOR SKYPIER
THE R.P. OF CHEK LAP KOK LOT NO.1
& THE EXTENSION THERETO

Drawn by NOEL SO	Date 23-01-07	Surveyed by	Date	Hong Kong International Airport	
Job No. S / 07 / 008	Scale 1 : 1000 (A3)	Checked by	Approval for Issue	Drawing No. AMD / P250 / S / 0001	
				Loc. FERRY TERMINAL	Work code DR
				Rev. A	