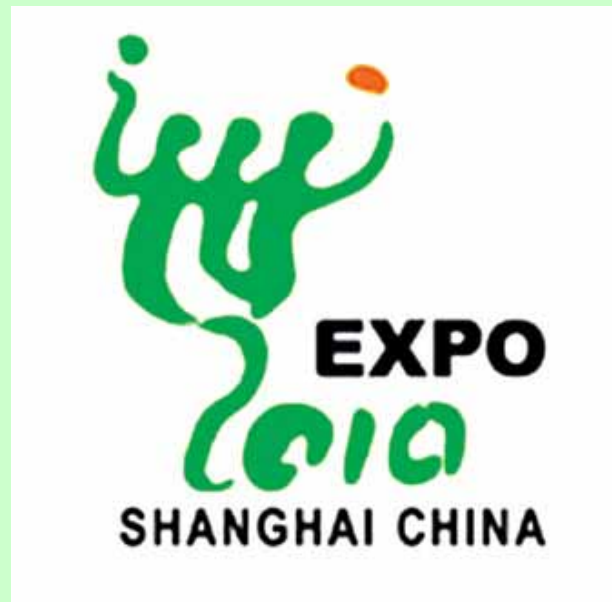


CONCEPT DESIGN COMPETITION 立法會CB(1)1284/07-08(01)號文件
LC Paper No. CB(1)1284/07-08(01)

WORLD EXPOSITION 2010 SHANGHAI CHINA
THE HONG KONG PAVILION

Main Theme of World Exposition 2010 : Better City, Better Life
「城市，讓生活更美好」

Theme of Hong Kong Pavilion
“A City with Unlimited Potential”
「無限城市 – 香港」



CONCEPT DESIGN COMPETITION

**WORLD EXPOSITION 2010 SHANGHAI CHINA
THE HONG KONG PAVILION**

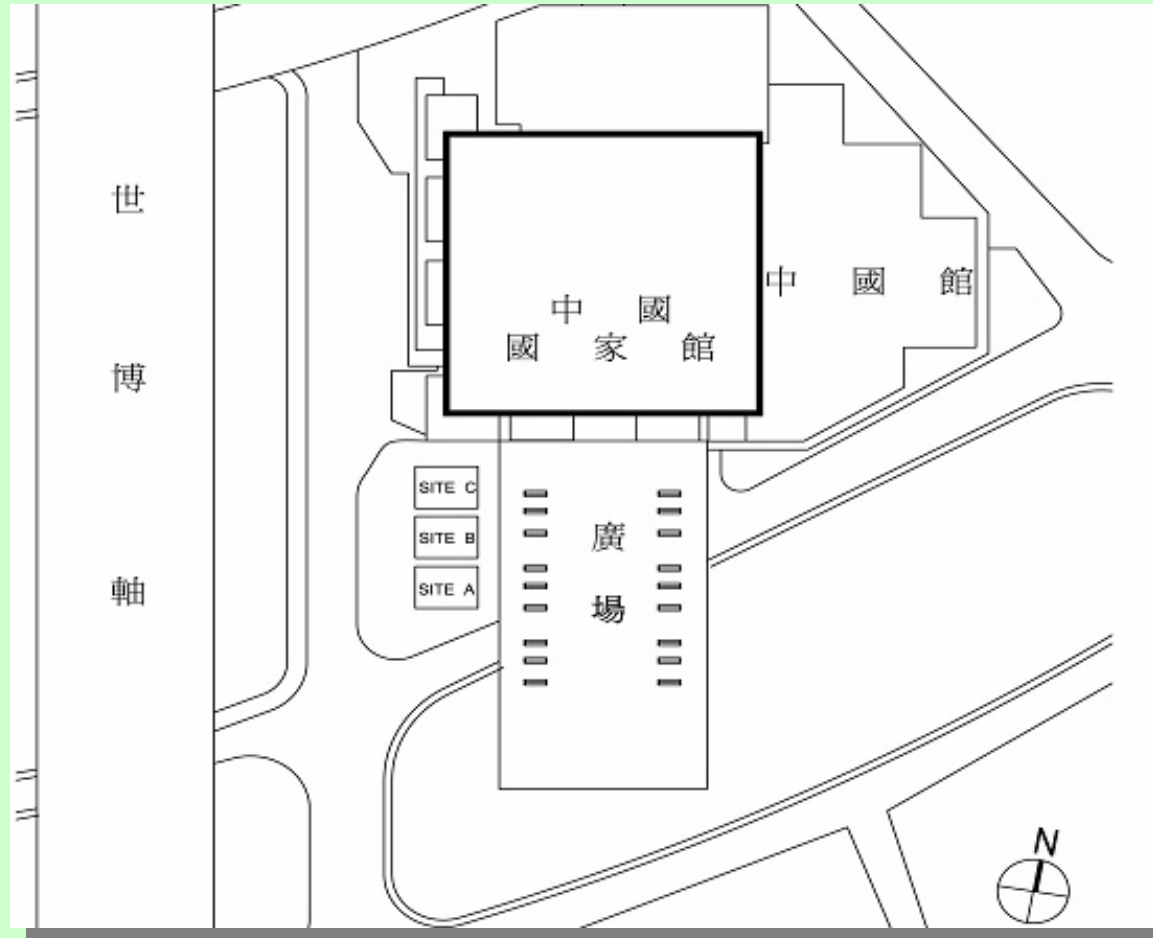
The China Pavilion 中國館

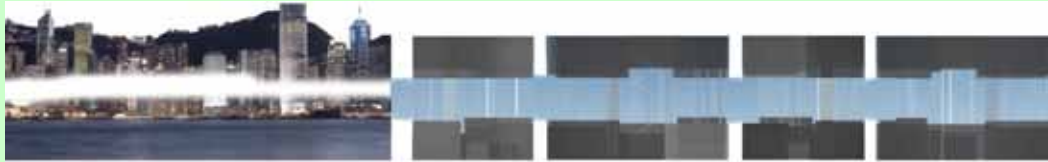


CONCEPT DESIGN COMPETITION

WORLD EXPOSITION 2010 SHANGHAI CHINA THE HONG KONG PAVILION

Location of the Hong Kong Pavilion





Concept Design Competition for
"World Exposition 2010 Shanghai China The Hong Kong Pavilion"

Pavilion of Infinity

THE [VOID] - THE INFINITE DIMENSION UNFOLDED FROM WITHIN THE PHYSICAL BOUNDARY

THE PAVILION REPRESENTS A CITY WITH A PHYSICAL BOUNDARY SLASHED TO UNFOLD ITS INFINITE DIMENSION - THE IMAGINATION [VOID] WHERE IDEAS CAN GO BEYOND ANY PHYSICAL BOUNDARY. THIS IMMENSE [VOID] WITHIN THE TIGHTLY INTERWOVEN CITY FABRIC OF HONG KONG IS WHERE THE BOUNDLESS POTENTIAL OF A DYNAMIC CITY IS REVEALED.

MATERIALS & SUSTAINABILITY



POLYETHYLENE NON-WOVEN TEXTILE TO GIVE A SENSIBLE SKIN FOR THE PAVILION



TRANSLUCENT MEMBRANE TO PROVIDE A SMOOTH INNER LAYER ALSO AS SCREENS FOR PROJECTIONS & PRINTED ON AS EXHIBITS



REFLECTIVE MEMBRANE AS SKY & GROUND FOR [VOID]



THE DOUBLE SKIN

HIERARCHY OF EXHIBITS



TIGHTLY INTERWOVEN CITY FABRIC GENERATES THE PLAN FOR THE PAVILION, WITHIN WHICH THE BOUNDLESS POTENTIAL OF A DYNAMIC CITY IS REVEALED.

CONNECT WITH NATURE

UNBOUNDLESS IMAGINATION

PRIBARY BUILT CITY



THE [VOID] DIVIDES THE PAVILION INTO THREE LEVELS AND THE EXHIBITIONS ARE DISPLAYED IN ACCORDANCE TO THE HIERARCHY LEVELS OF CITY DEVELOPMENT, CORRESPONDING TO THE SIX THEMES OF THE HONG KONG PAVILION.

THE CONTRAST OF THE THREE LEVELS OF EXHIBITS IS TO CALL UPON THE VISITORS TO RE-THINK ON THE POSITIONING OF A CITY, AND THE DEFINITIONS FOR A BETTER CITY AND A BETTER LIFE.



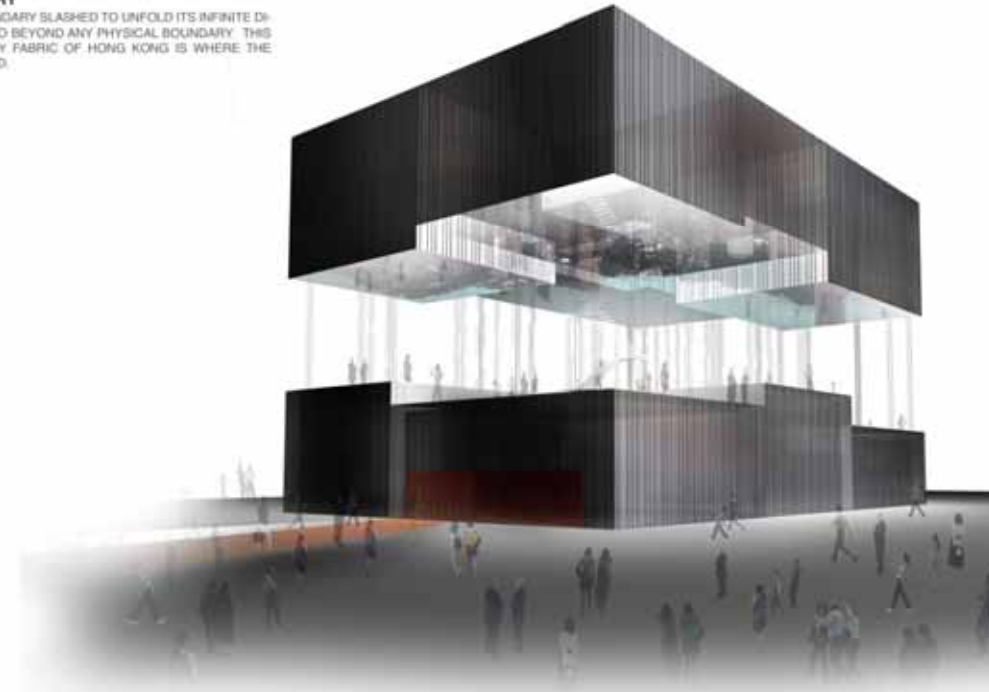
1. SLOVATED VOID- WALL
2. OPEN AIR GREEN CORNER
3. VOID WALL
4. VOID WALL

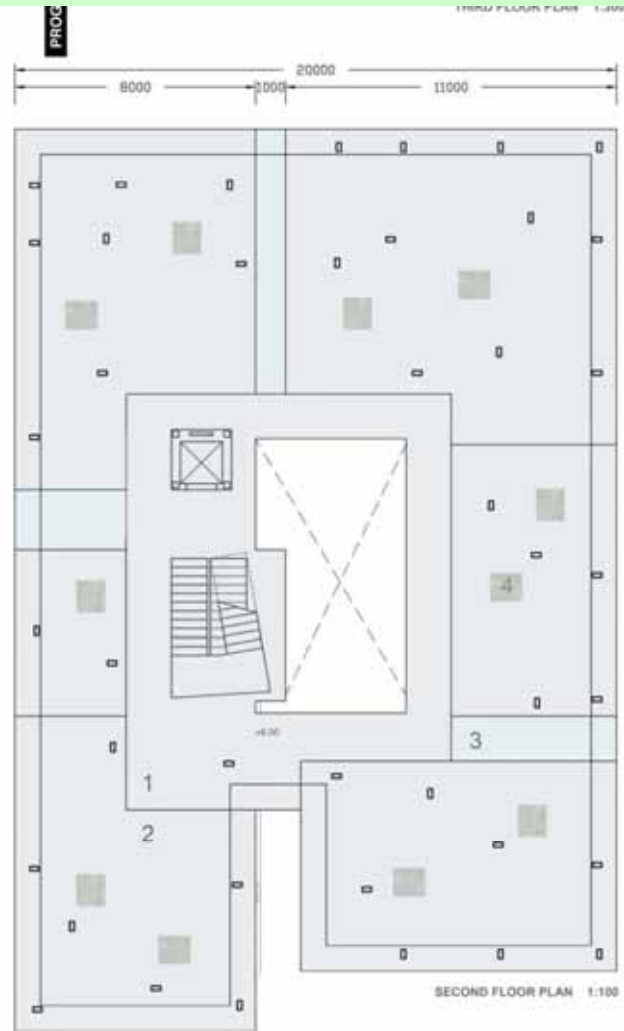
3rd LAYER - SUNDECK - ENVISAGED FUTURE THEMATIC COMPONENTS - SUSTAINABLE QUALITY CITY LIFE



FROM THE INTERMEDIATE INFINITE [VOID], VISITORS ASCEND TO JOIN THE TRUE BEAUTY OF THE REAL WORLD. ON THIS NATURALLY VENTILATED AND LIT UP SUN DECK, SHELTERED BY MEMBRANE CEILING, IS DISPLAYED LIVE VIDEOS OF HONG KONG'S SPLENDID OUSKIRTS AND NATURAL WONDERS. THIS CONNECTION TO NATURE IS REGARDED AS AN UNIVERSAL URGE OF HUMAN BEINGS & THE SOURCE OF POWER FOR CREATIVITY.

A VIDEO ROOM ALSO FEATURES PROGRAMMES ON URBAN RENWAL AND VISIONS FOR FUTURE GREEN CITIES





- 1 NEW SLIPPERY FLOORING
- 2 PLATFORMS WITH REFLECTIVE MEMBRANE ON RECYCLED RUBBER
- 3 SKYLIGHT
- 4 AIR SHOWER

2nd LAYER - THE [VOID] - INFINITE CREATIVITY
 THEMATIC COMPONENTS: ADVANCED INFORMATION TECHNOLOGY/
 FINANCIAL & TRADING SYSTEM/ CULTURAL DIVERSITY & CREATIVITY

GOING FURTHER UP, VISITORS EMERGE FROM THE ENCLOSED EXHIBITION ROOMS TO THE OPEN UNDULATING LANDSCAPE & THE INFINITE VISUAL SPACE. THE REFLECTIONS GENERATED BY REFLECTIVE PLATFORM & SKY SYMBOLIZE THE INFINITE NATURE OF CREATIVITY THAT WOULD BE UNFOLDED WITHIN THIS INTERACTIVE SPACE.



THE UNDULATING LANDSCAPE, MADE OF RECYCLED RUBBER COVERED WITH REFLECTIVE MEMBRANE, IS EMBEDDED WITH INTERACTIVE MONITORS AND SHOWCASES. IT PROVIDES AN OPEN EXPLORATIVE PLATFORM FOR VISITORS, AND AN LARGE OPEN PLATFORM FOR THE PERFORMANCES OF ART OF THE VARIOUS CULTURES IN THE CITY.



VISITORS WILL FIRST GET A TASTE OF THE DENSE CITY FABRIC OF HONG KONG BY INTERMINGLING AMONG THE 'EXHIBITION BLOCKS' & WALKING THROUGH LARGE SCALE MODELS OF THE CITY SUPERSTRUCTURE AND INFRASTRUCTURAL CONNECTIONS WITH THE MAINLAND CHINA AND THE WORLD.

THROUGH THE CENTRAL LANE AMONG THE 'EXHIBITION BLOCKS', THE VISITORS WILL GET A GLIMPSE OF THE [VOID] ABOVE.



**1st LAYER -
THE INTERWEAVING CITY**

THEMATIC COMPONENTS : EXCELLENT INFRA-
STRUCTURE & CONNECTIVITY WITH MAINLAND
CHINA & WORLDWIDE / WELL-CONNECTED &
EFFICIENT DOMESTIC TRANSPORTATION

- 1 ENTRANCE
- 2 RECEPTION & EXHIBITION
- 3 UP WOOD
- 4 EXHIBITION AREA
- 5 TOILET
- 6 STORE
- 7 MEET ROOM
- 8 RESTROOM

