

CB(1)581/07-08(01)

門 常開 Door always open
地 常綠 Land always green
天 復藍 Sky will be blue
民 永繫 People will be connected



門常開 Door always open





View towards Harbour through the Portal
從添馬門廊遠眺維港



地 常綠

Land always green



View of LegCo Through the Foliage
樹影下的草坡及立法會綜合大樓



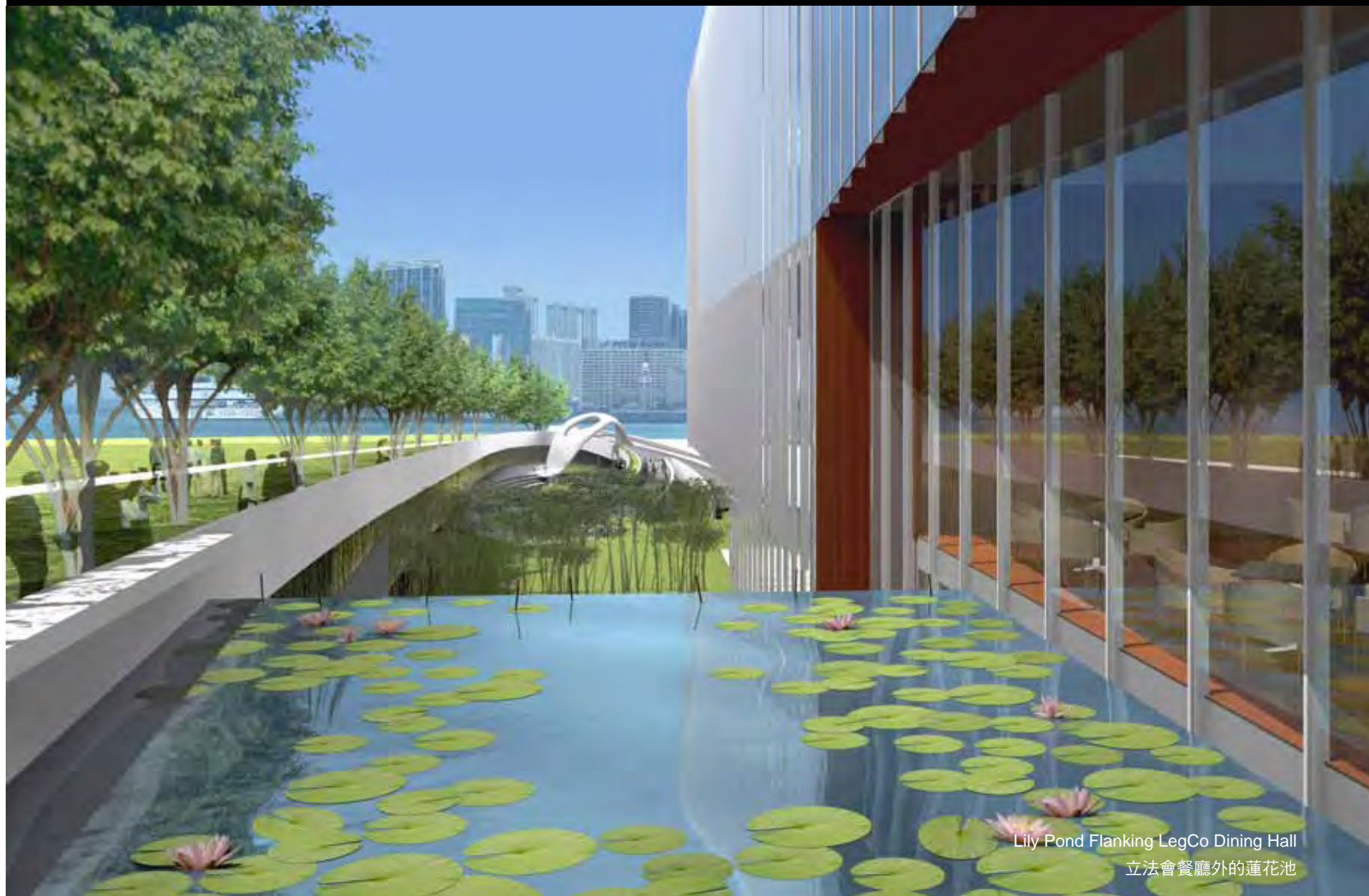
View of the Green Carpet
草坡景緻



Amphitheatre
露天劇場



Tamar Deck
添馬涼亭



Lily Pond Flanking LegCo Dining Hall
立法會餐廳外的蓮花池



Sculpture Court
雕塑院



LegCo Garden
立法會花園



Floating Platform
觀魚台



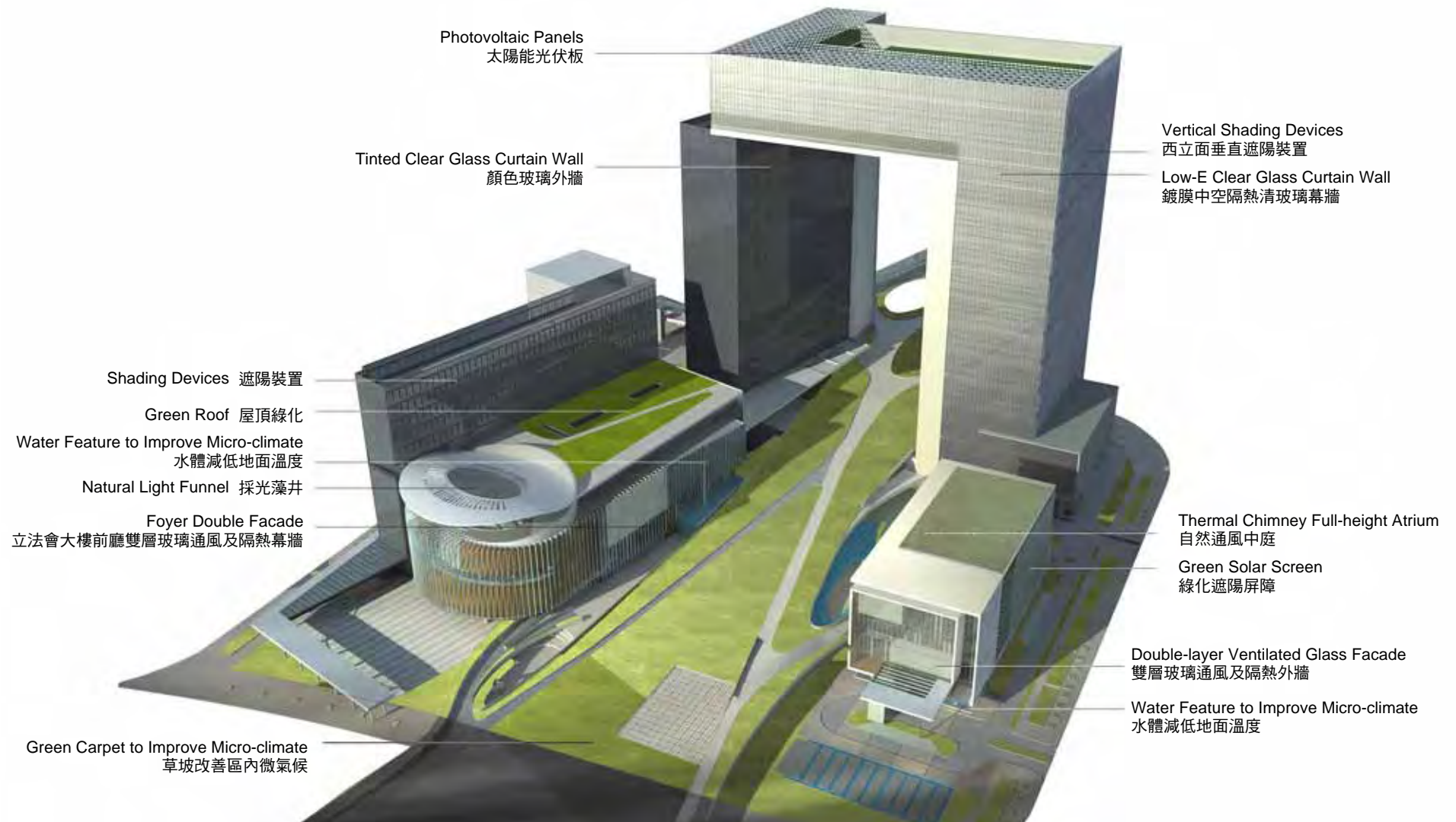
Tamar Corner
添馬角

天 復藍 Sky will be blue

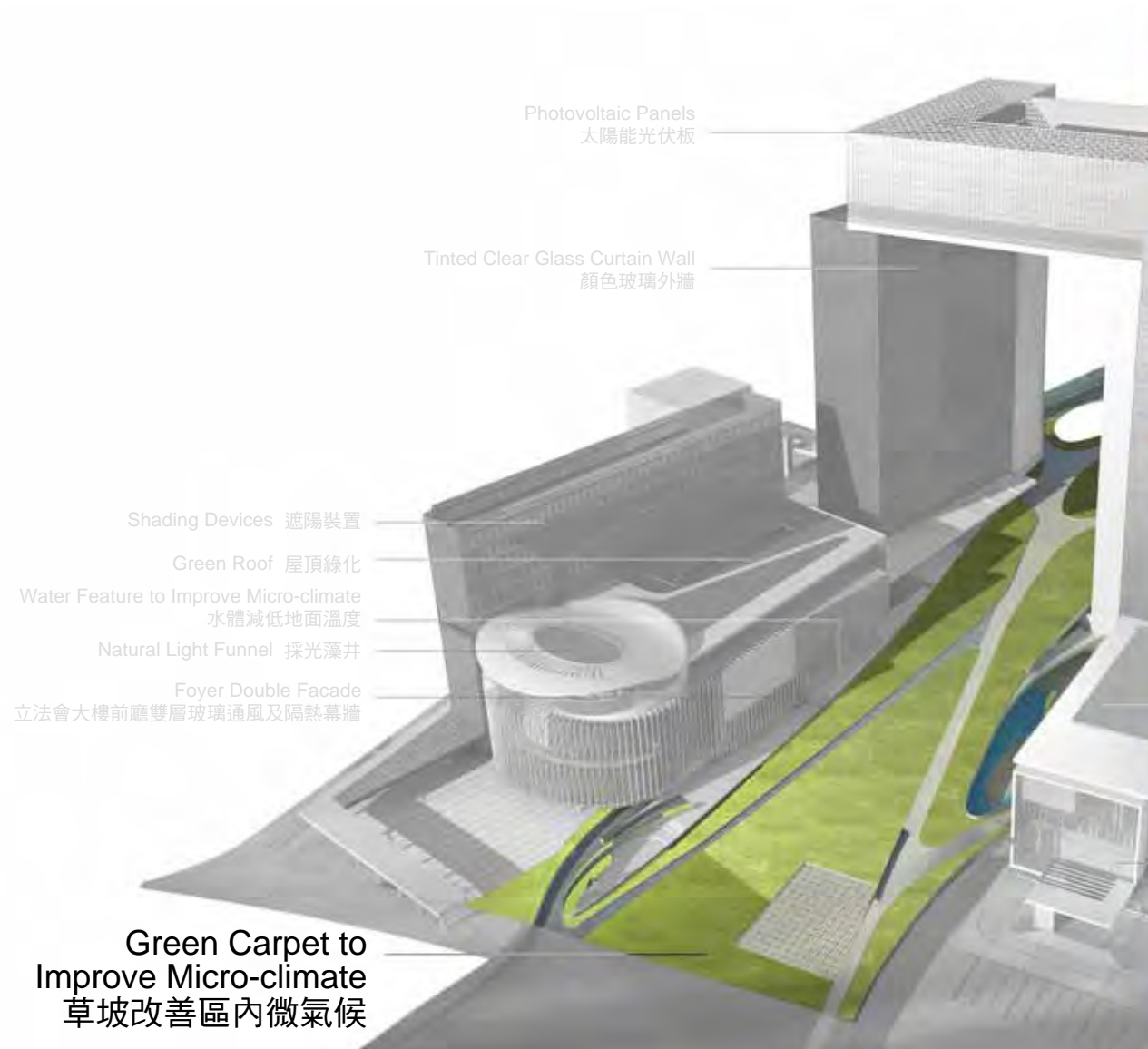


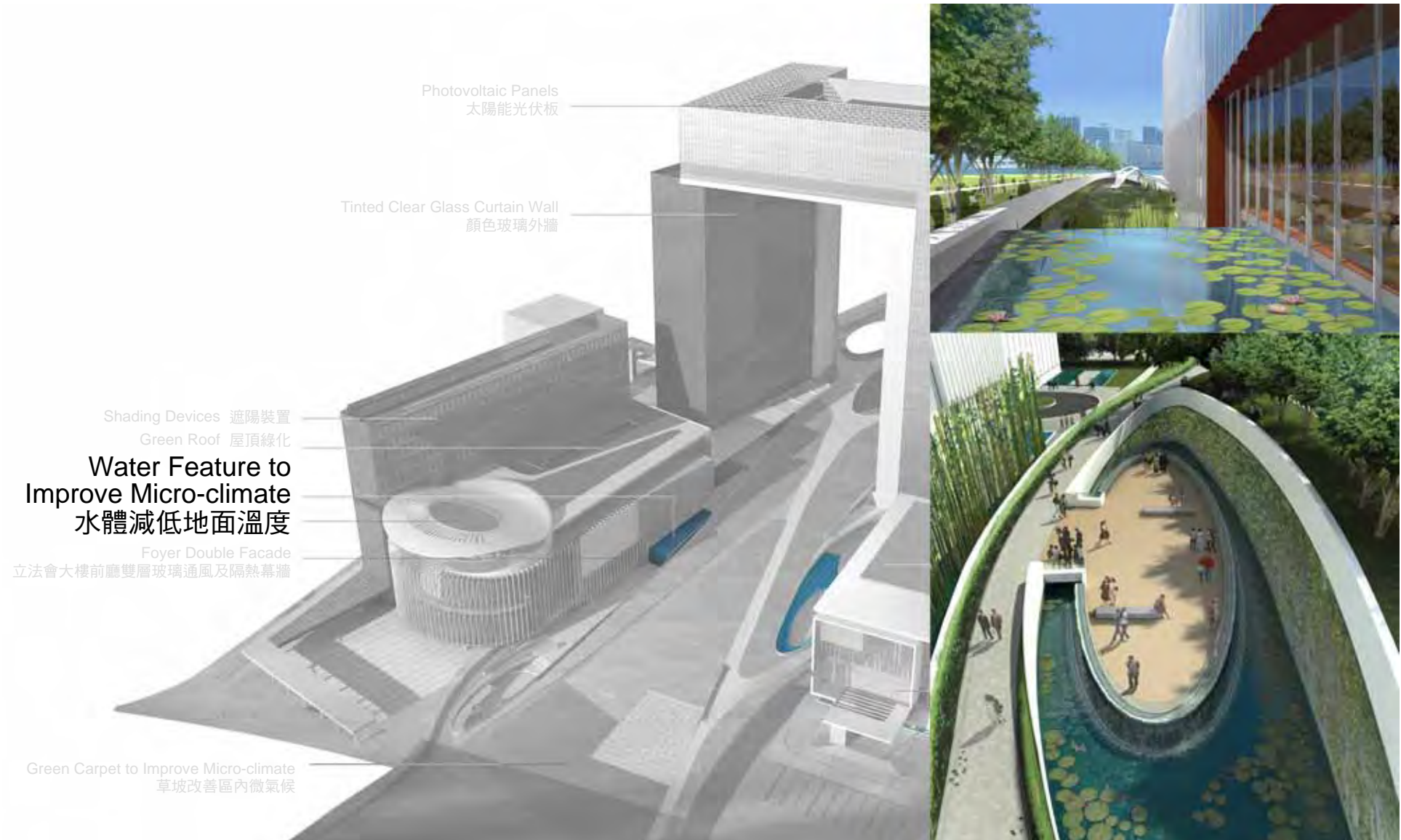


Selective Environmental Design Strategies 環保設計概念

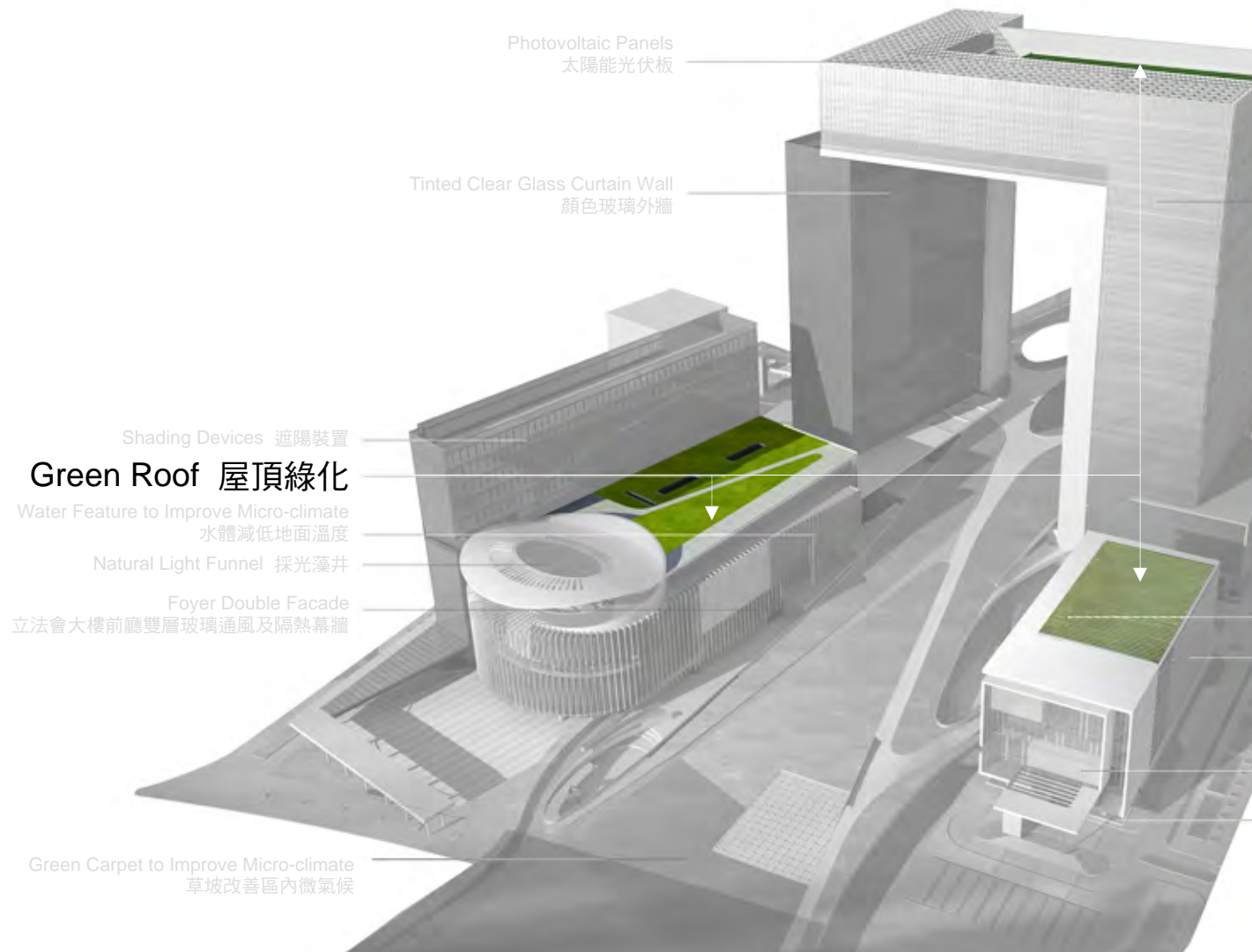


Selective Environmental Design Strategies 環保設計概念





Selective Environmental Design Strategies 環保設計概念



Photovoltaic Panels
太陽能光伏板

Tinted Clear Glass Curtain Wall
顏色玻璃外牆

Shading Devices 遮陽裝置

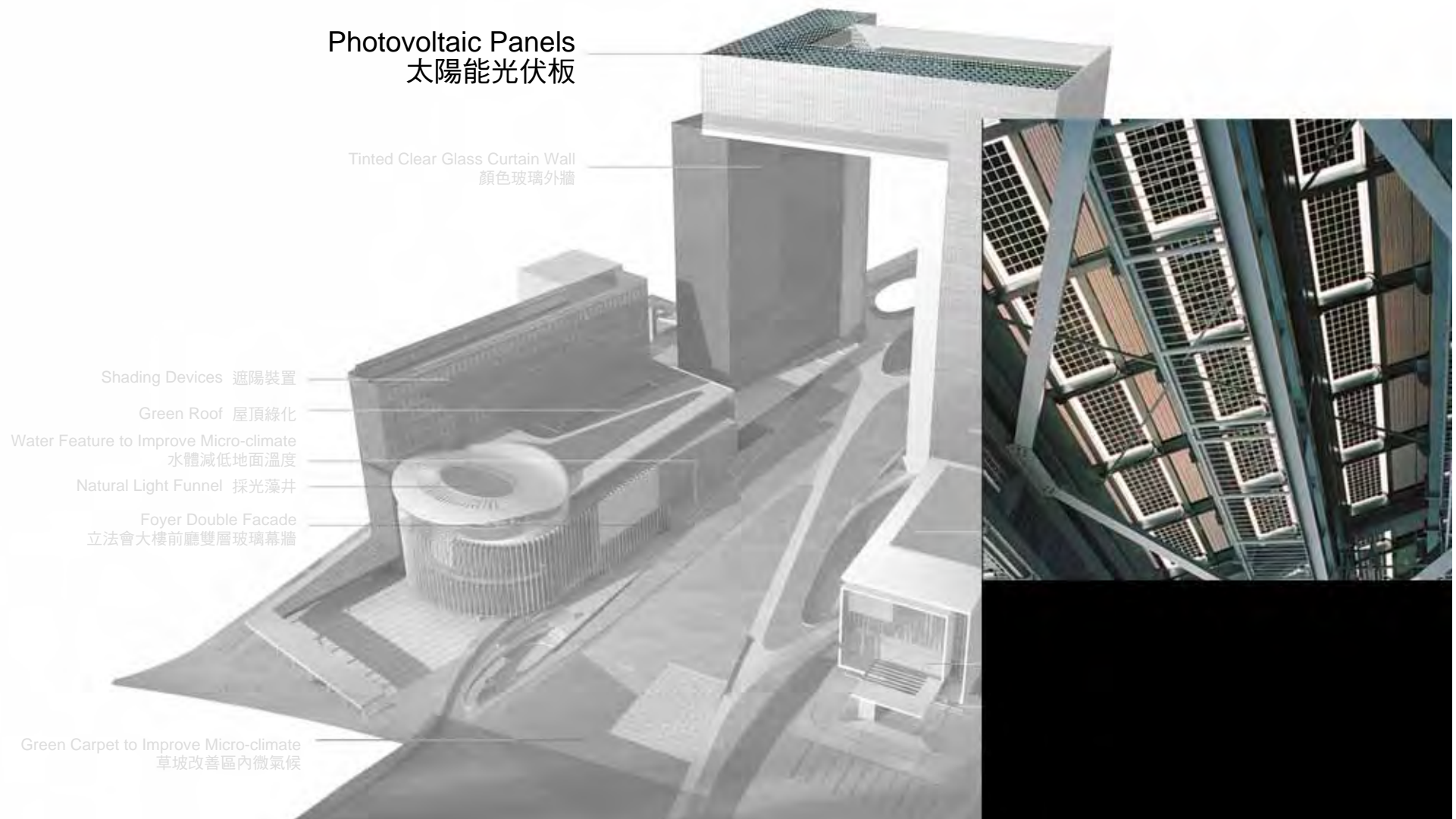
Green Roof 屋頂綠化

Water Feature to Improve Micro-climate
水體減低地面溫度

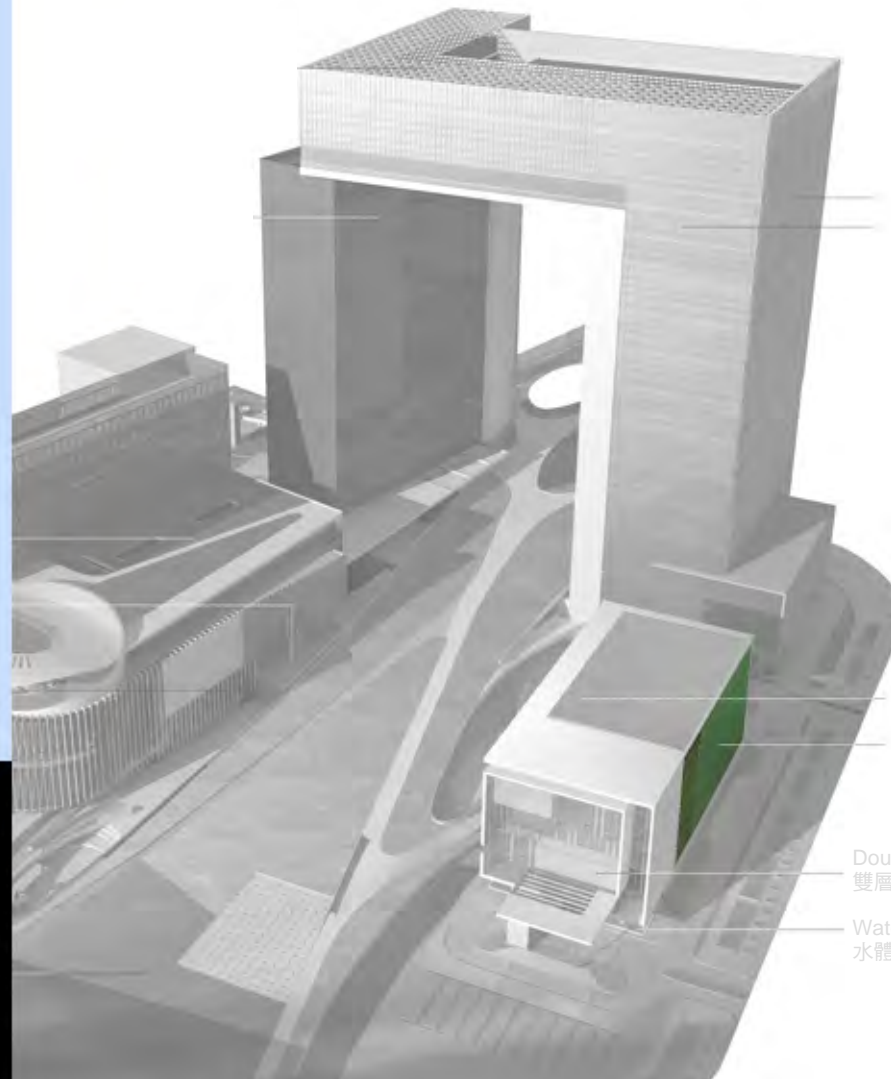
Natural Light Funnel 採光藻井

Foyer Double Facade
立法會大樓前廳雙層玻璃通風及隔熱幕牆

Green Carpet to Improve Micro-climate
草坡改善區內微氣候



Selective Environmental Design Strategies 環保設計概念



Vertical Shading Devices
西立面垂直遮陽裝置

Low-E Clear Glass Curtain Wall
鍍膜中空隔熱清玻璃幕牆

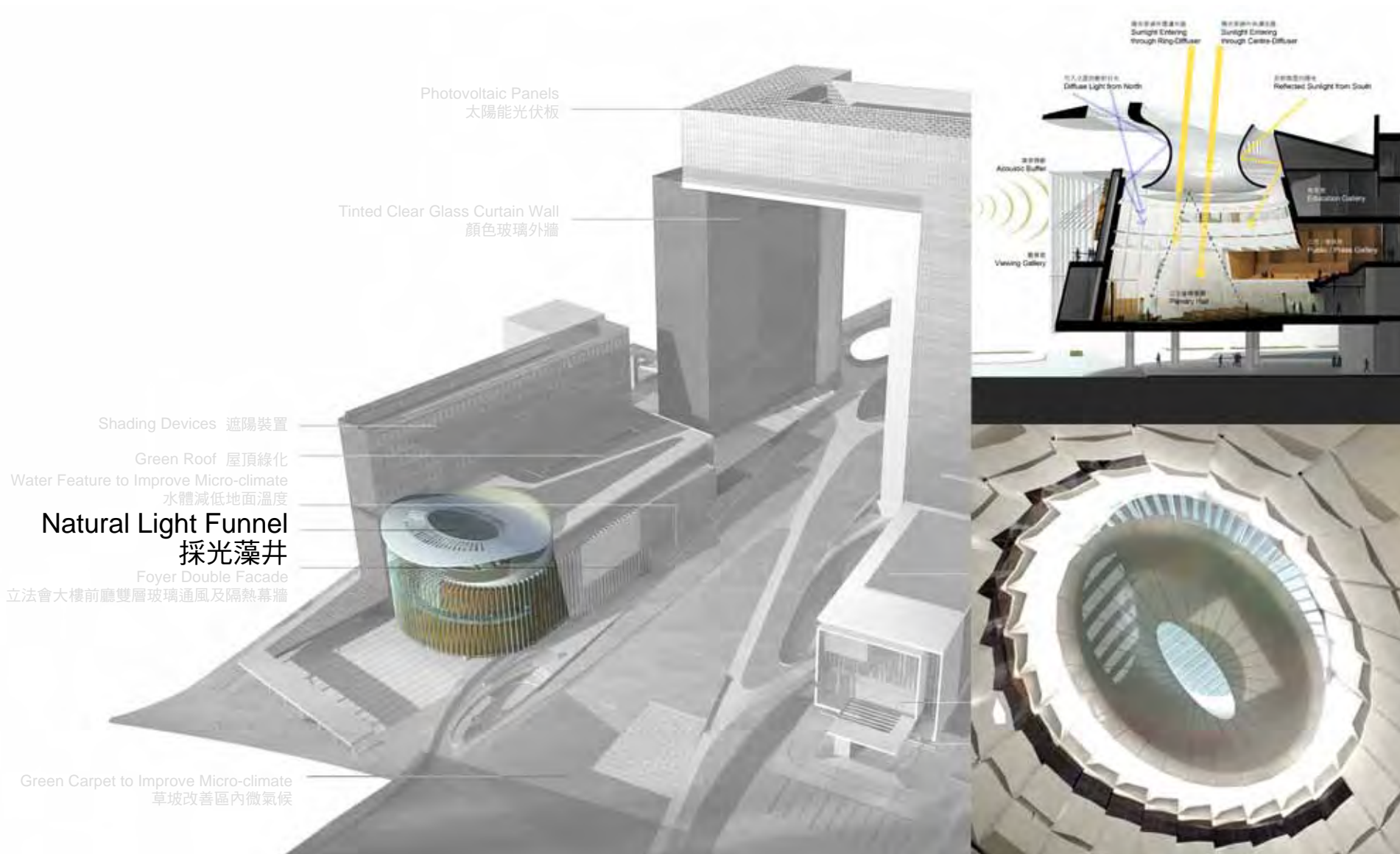
Thermal Chimney Full-height Atrium
自然通風中庭

Green Solar Screen
綠化遮陽屏障

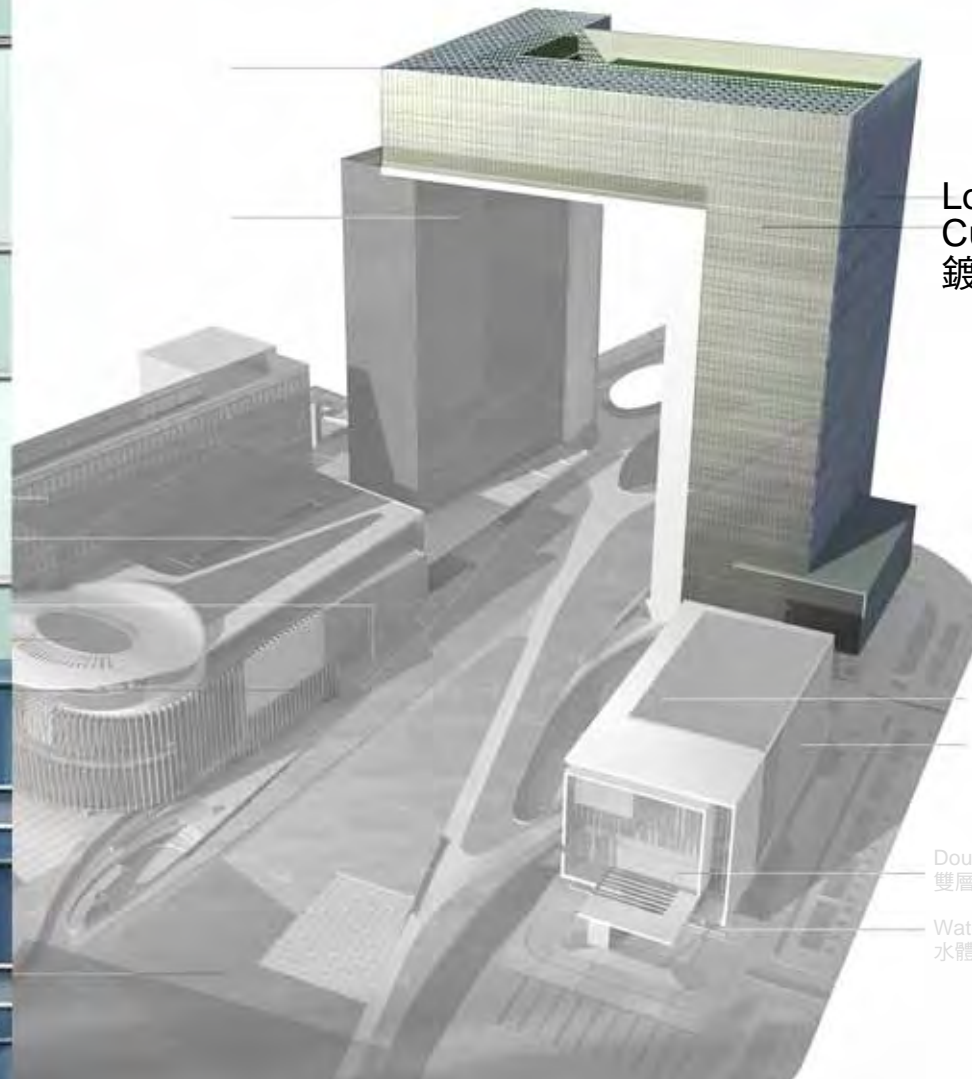
Double-layer Ventilated Glass Facade
雙層玻璃通風外牆

Water Feature to Improve Micro-climate
水體減低地面溫度

Selective Environmental Design Strategies 環保設計概念



Selective Environmental Design Strategies 環保設計概念



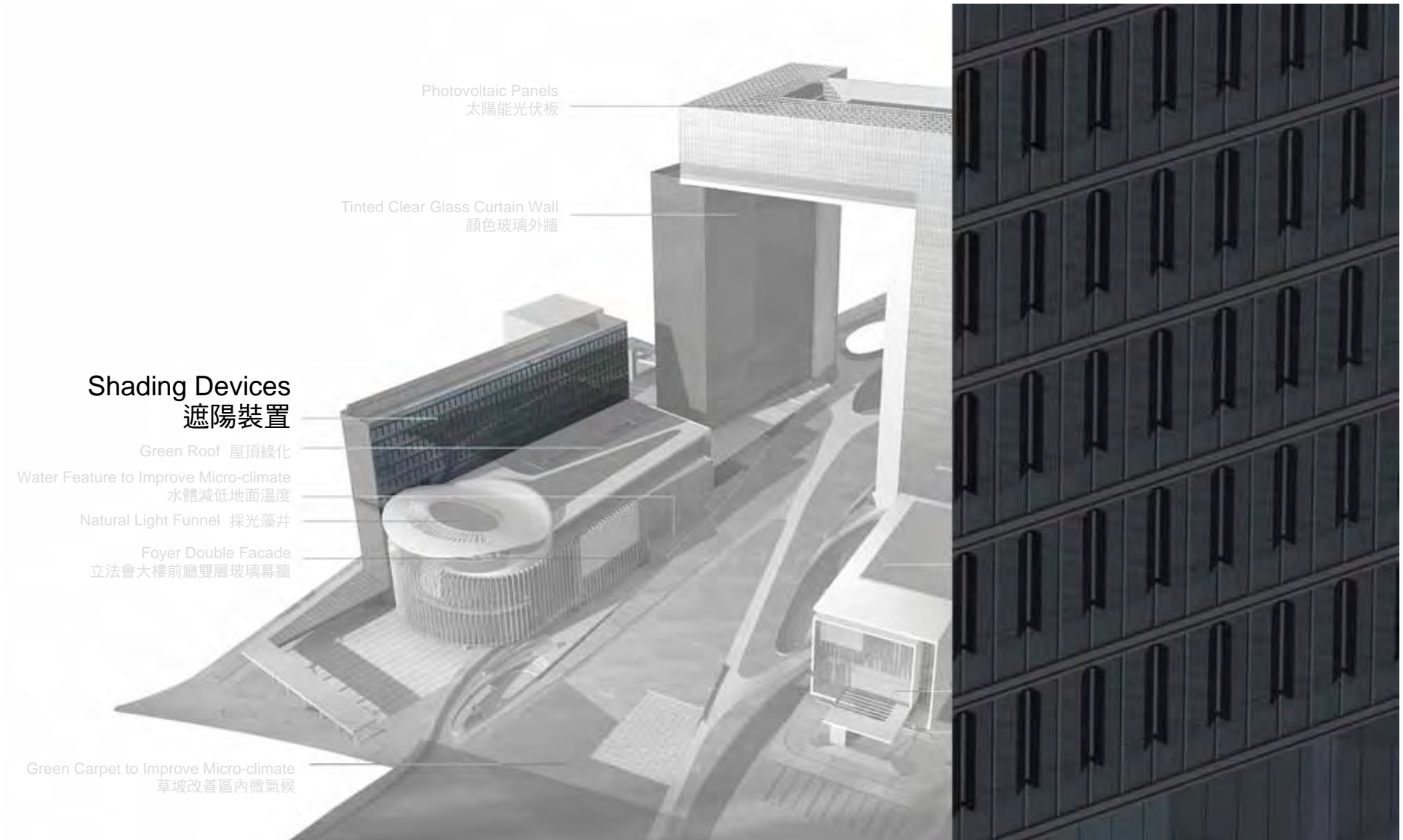
Low-E Clear Glass
Curtain Wall
鍍膜中空隔熱清玻璃幕牆

Thermal Chimney Full-height Atrium
自然通風中庭

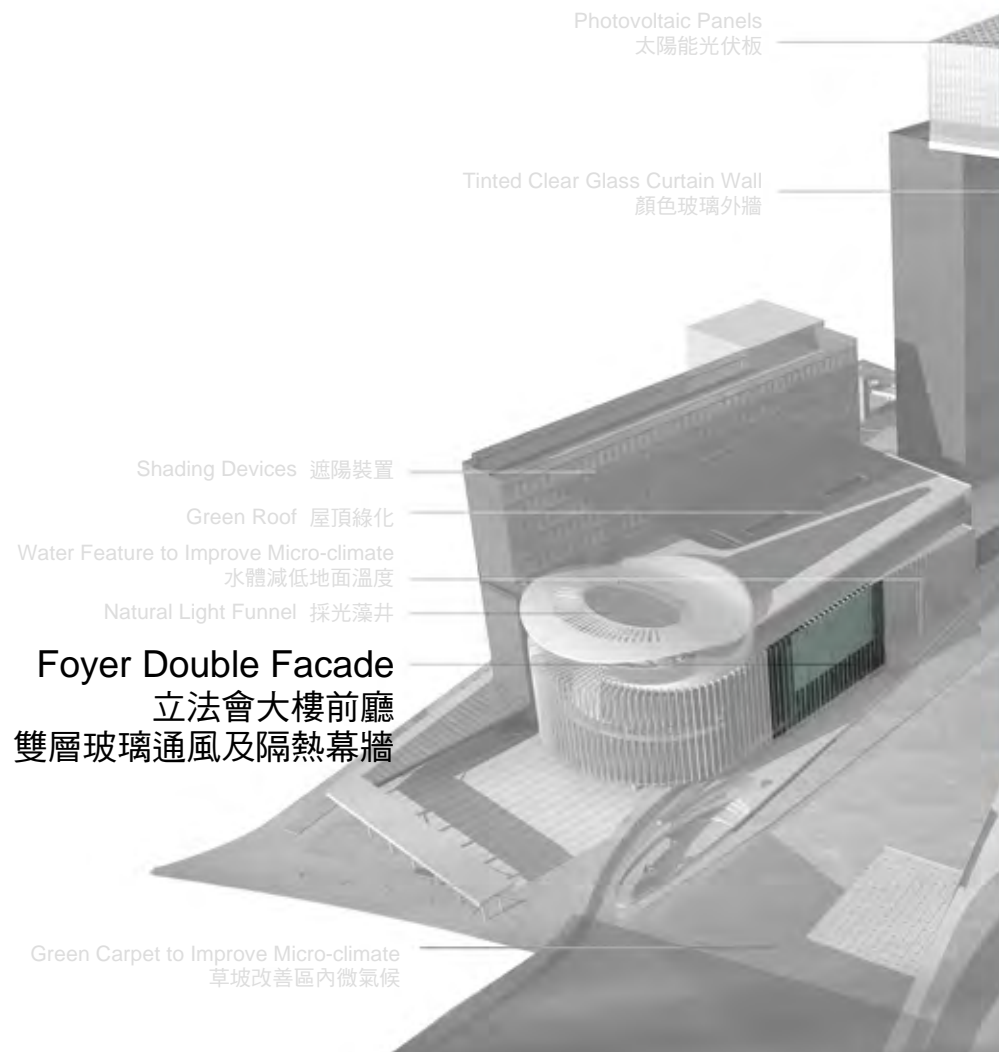
Green Solar Screen
綠化遮陽屏障

Double-layer Ventilated Glass Facade
雙層玻璃通風外牆

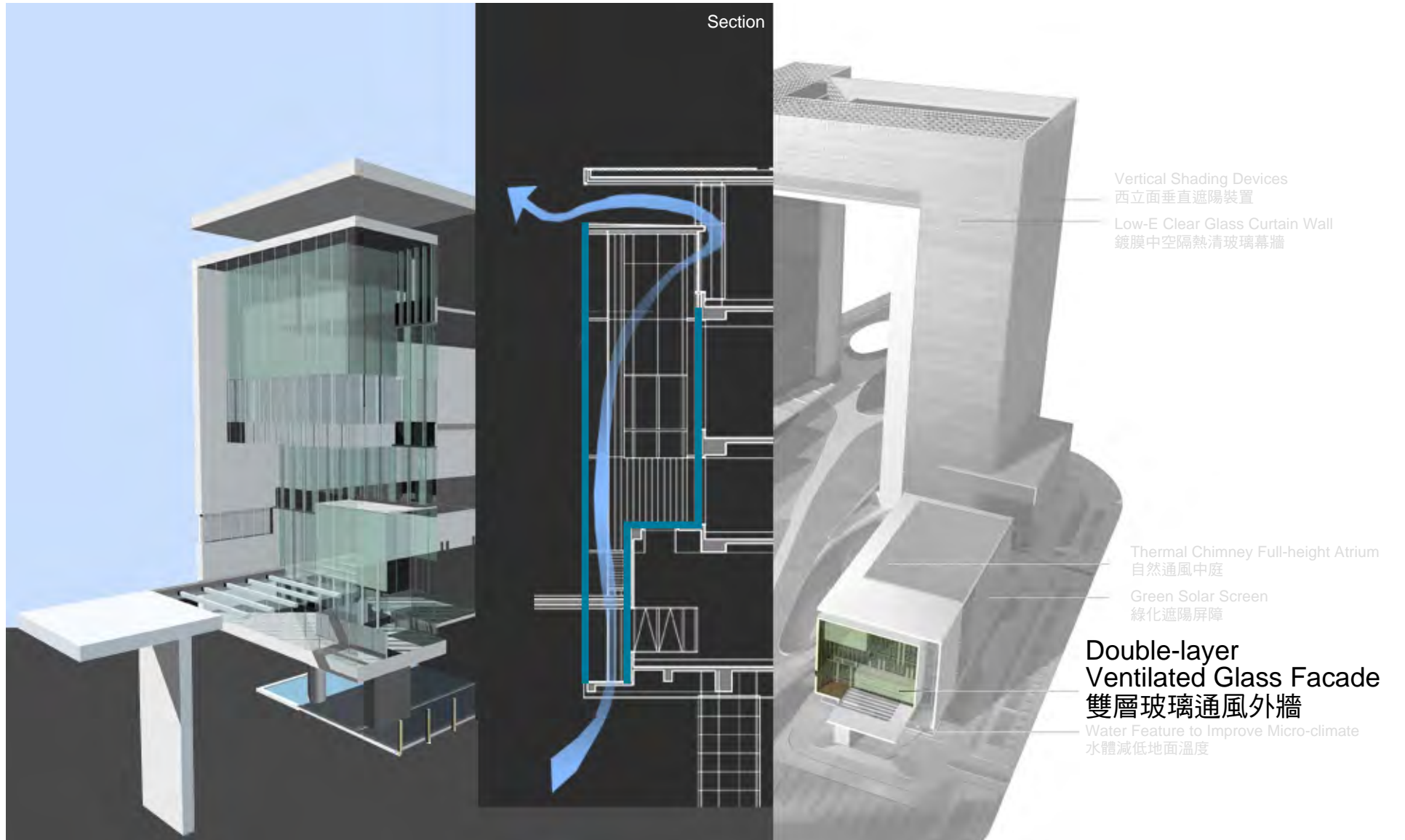
Water Feature to Improve Micro-climate
水體減低地面溫度



Selective Environmental Design Strategies 環保設計概念



Selective Environmental Design Strategies 環保設計概念

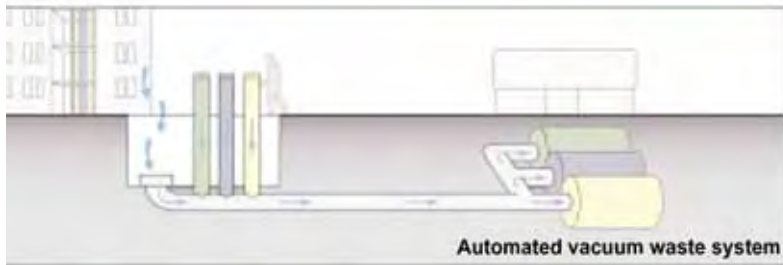




Rainwater Recycling for Irrigation purpose
雨水循環作部份植物灌溉之用

Water Saving Devices
節省用水設施

Automated Waste Collection System
廢物回收及自動處理系統



Metal Scaffolding for Construction
建築使用金屬棚架代替傳統竹棚

Selective Environmental Design Strategies 環保設計概念



Modular System
組件式系統

Wood Materials with Low Emission of
Formaldehyde
低甲醛釋放量木材

Non-PVC Wall Covering
不含塑膠的牆身裝飾

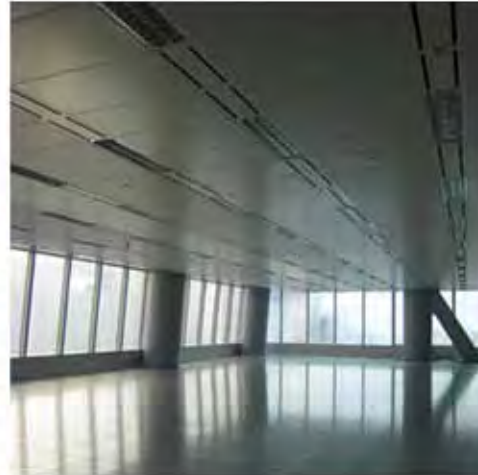
Materials with Low Volatile Organic
Compounds
低揮發性有機物建材

Computerized Lighting Control (CLC)
電腦控制照明系統

Daylight Sensor Control
日光感應控制照明系統

Motion Sensor Control
人流感應開關照明系統

High Efficiency Lamp Source and
Electronic Ballast
高效能燈及電子鎮流器



High Energy Efficiency Sea-water Cooled Chiller Plant
高效能海水制冷系統

Heat Wheel to Recovery Residual Cooling Energy of Exhaust Air for Fresh Air Dehumidification
以熱交換器利用餘溫，以減低能源消耗

Use of Variable Speed Drives for Air-conditioning Equipment
可變頻率及變速度的空調系統

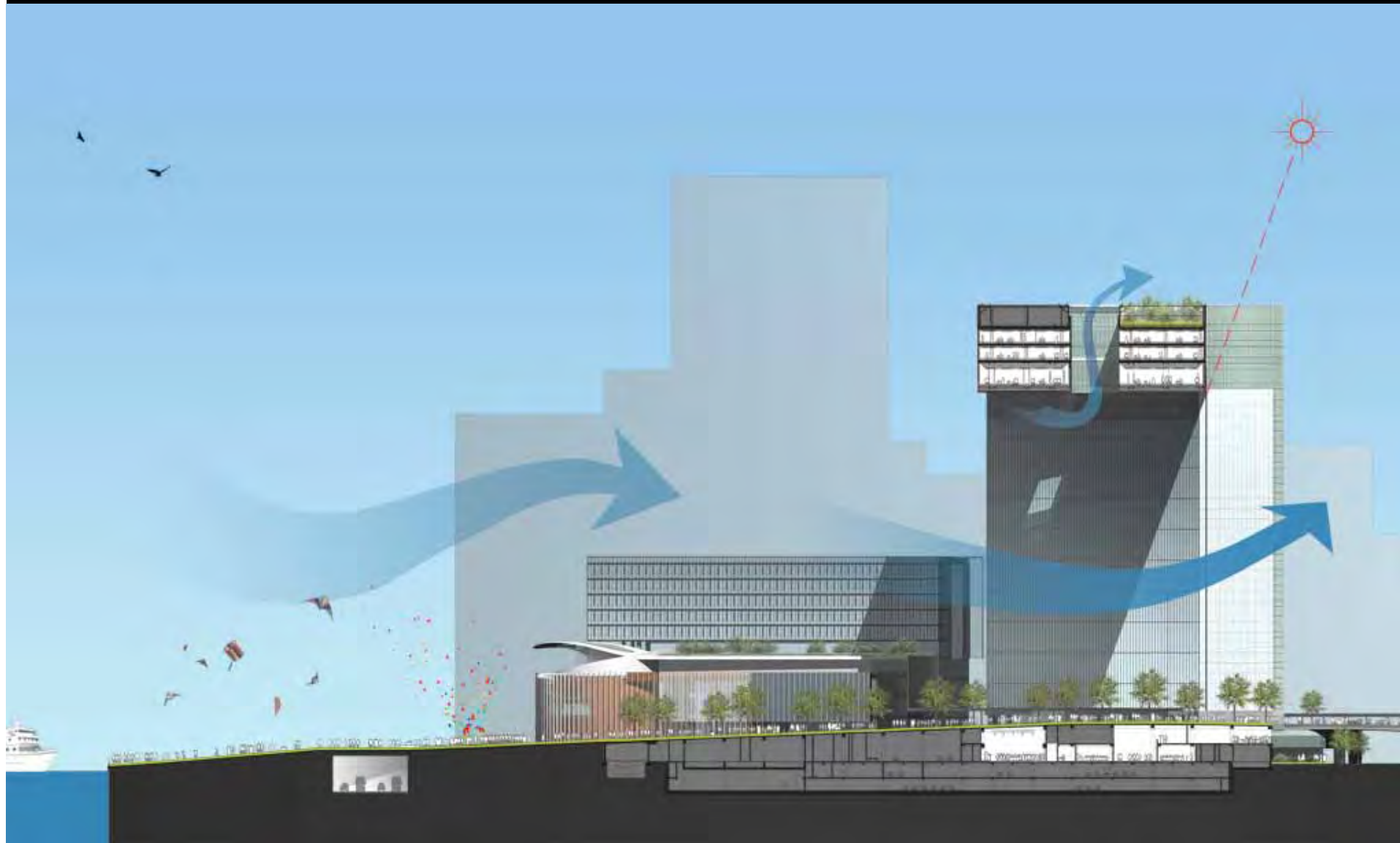


Free-cooling Economy System
於冬天和秋天氣溫和濕度較低時，直接利用室外空氣補充空調

Service-on-Demand Escalator
人流感應扶手梯

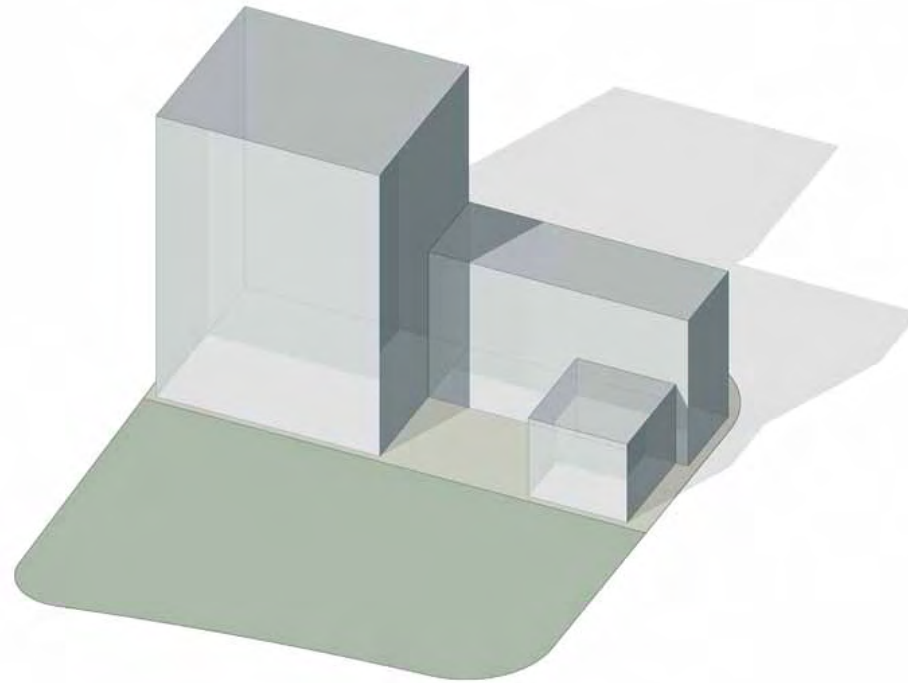
High Efficiency Motors
高效能摩打

LED Exit Signs
省電LED緊急照明

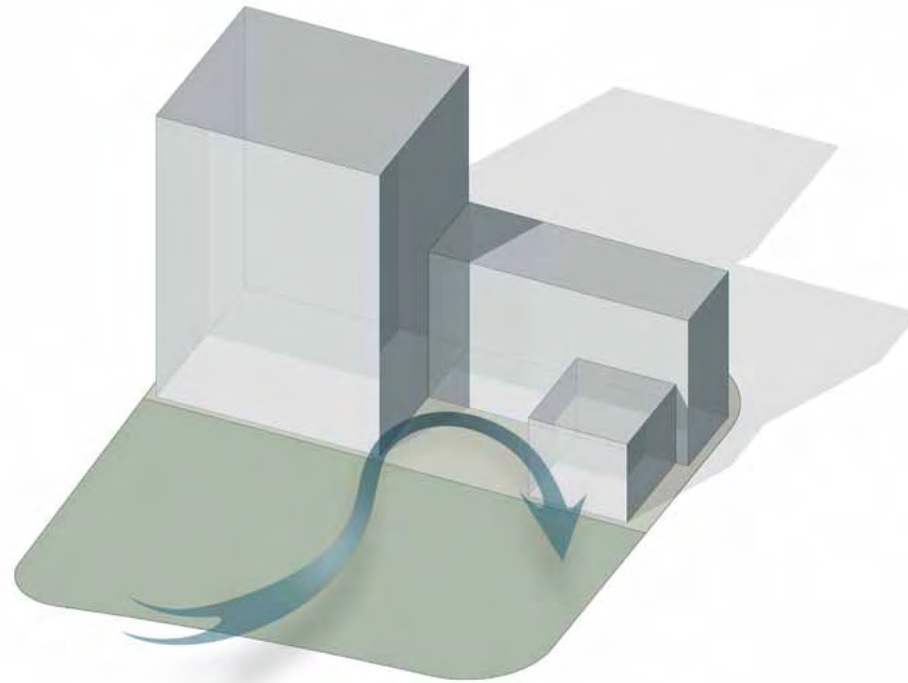


N-S Section

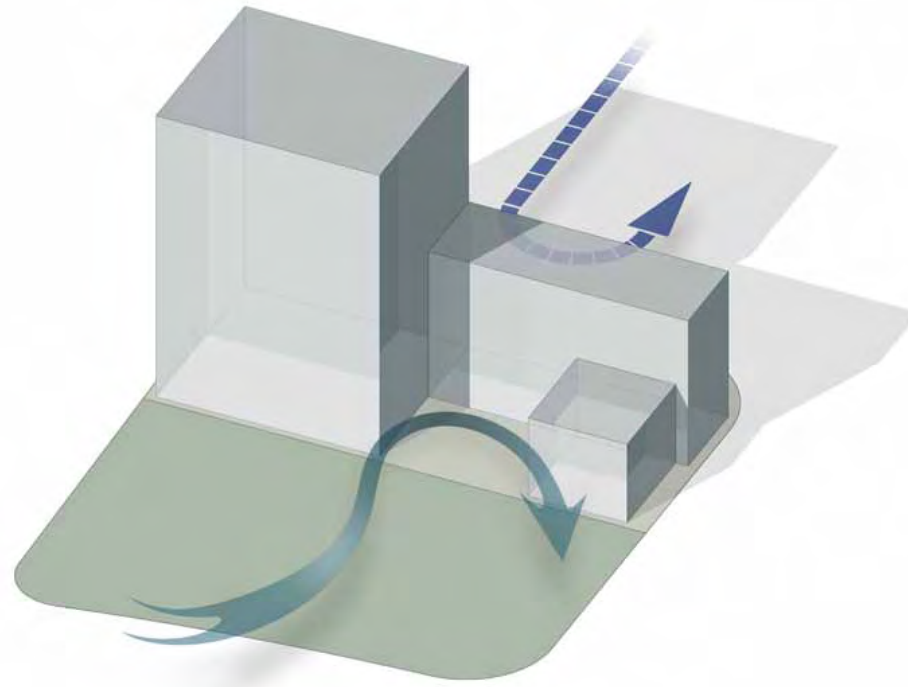
Composition of Buildings To Achieve Sustainability 可持續發展建築佈局



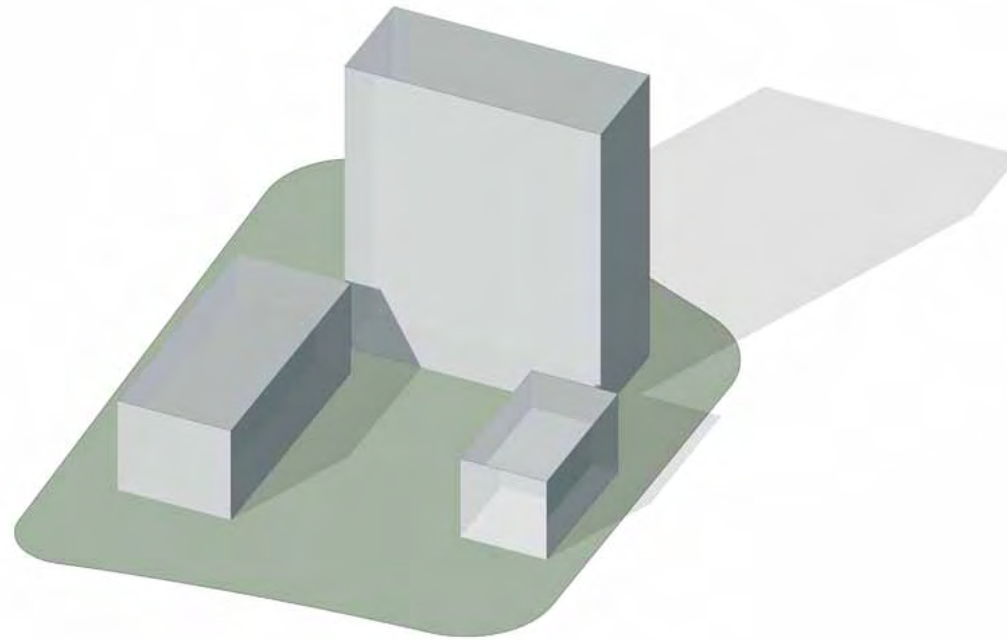
Composition of Buildings To Achieve Sustainability 可持續發展建築佈局



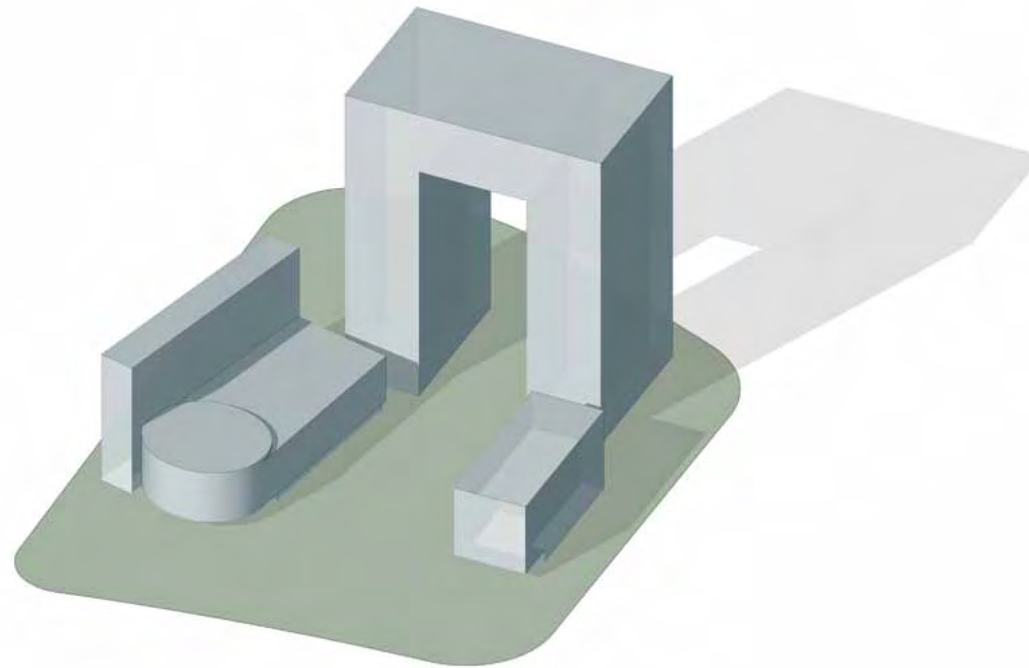
Composition of Buildings To Achieve Sustainability 可持續發展建築佈局



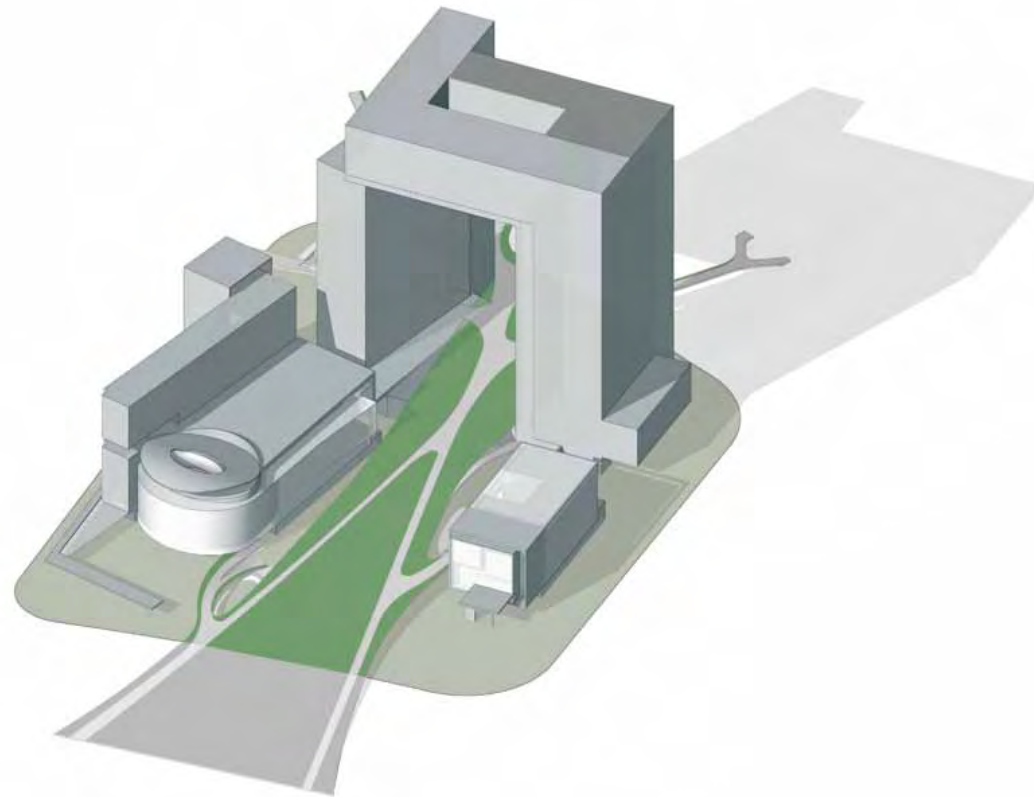
Composition of Buildings To Achieve Sustainability 可持續發展建築佈局



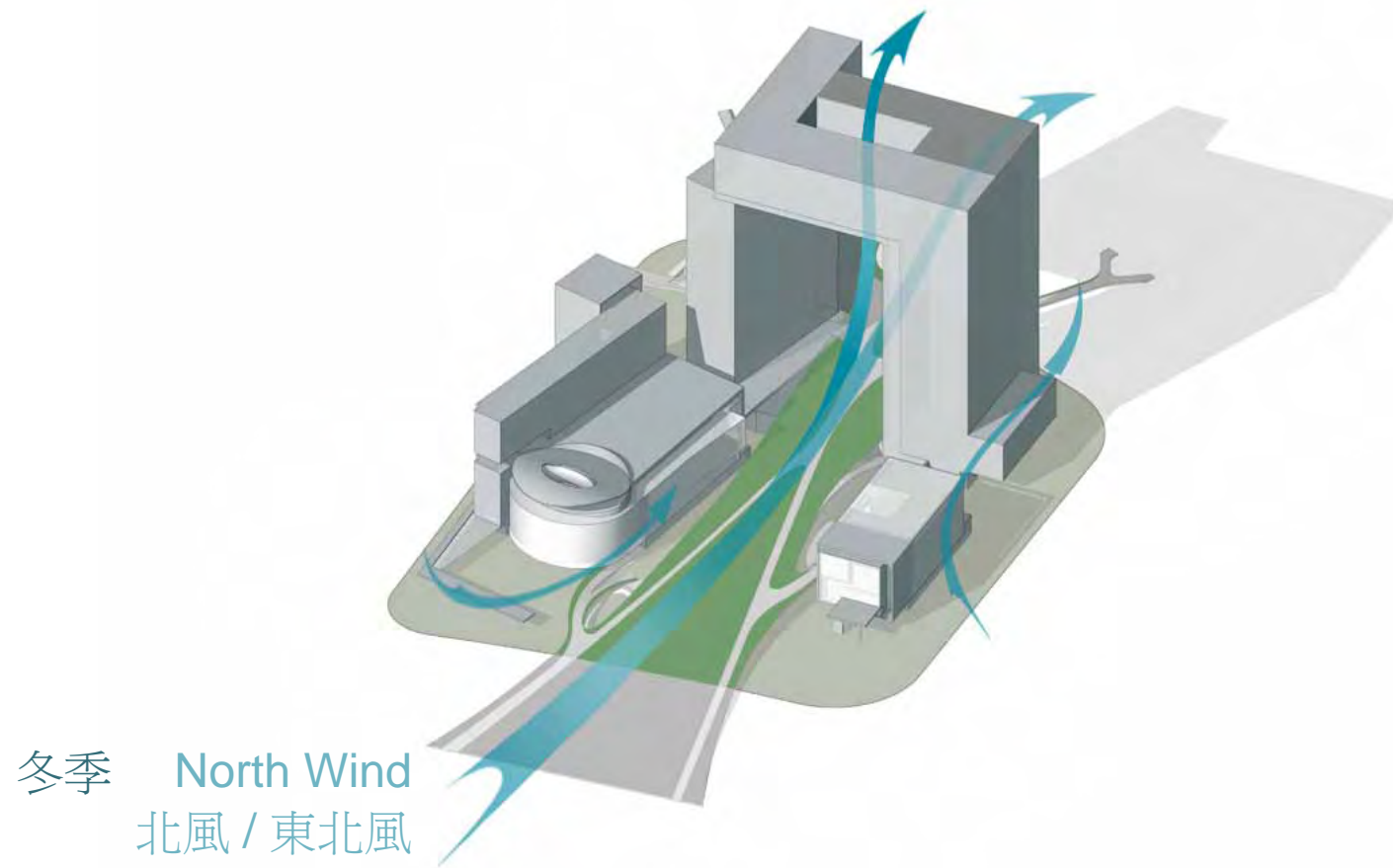
Composition of Buildings To Achieve Sustainability 可持續發展建築佈局



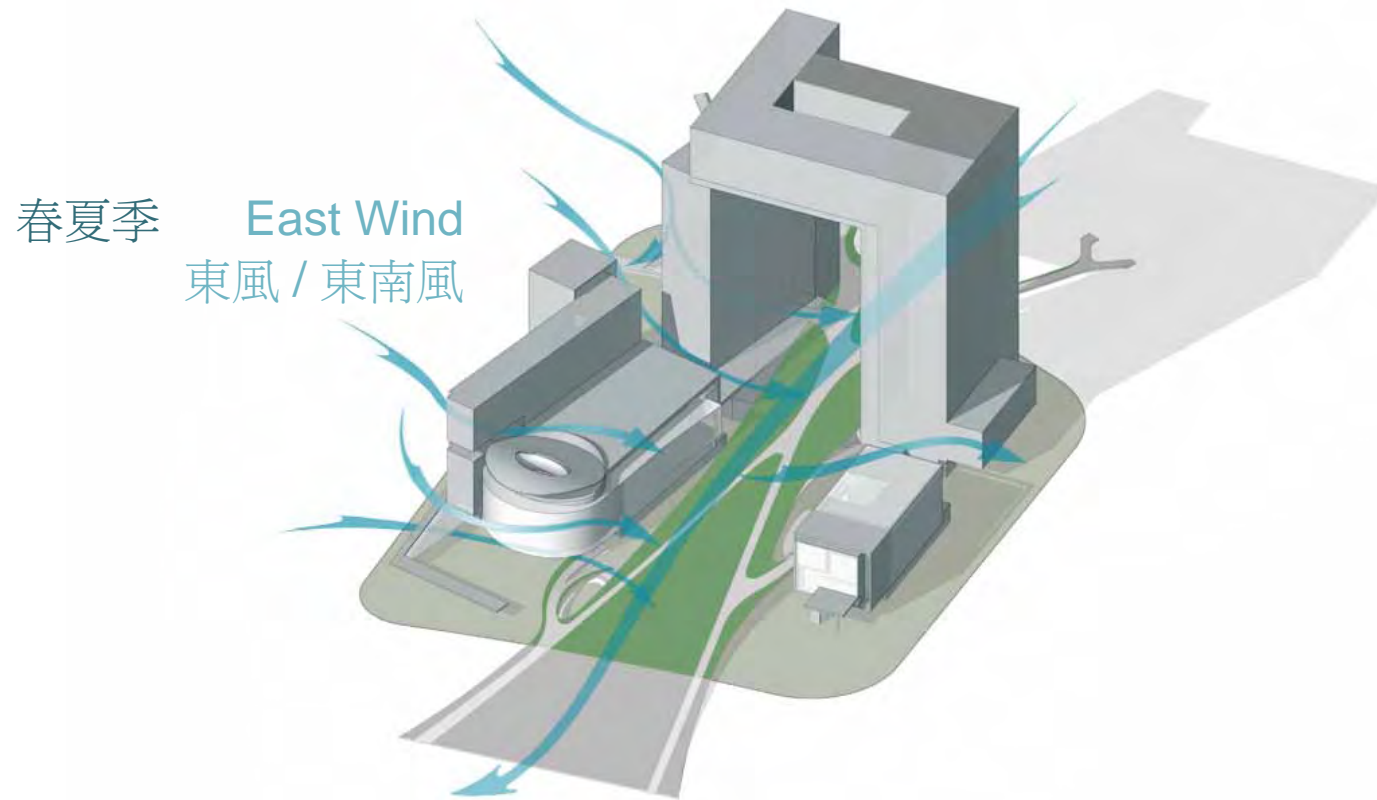
Composition of Buildings To Achieve Sustainability 可持續發展建築佈局

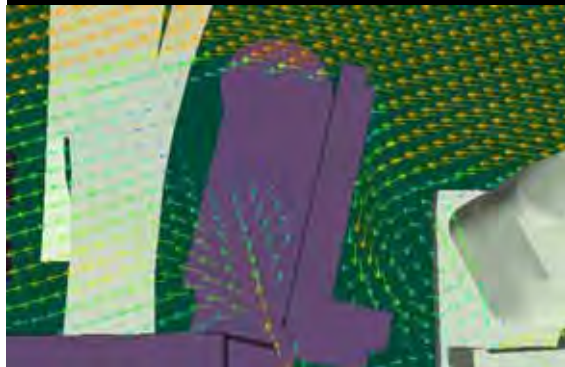


Composition of Buildings To Achieve Sustainability 可持續發展建築佈局



Composition of Buildings To Achieve Sustainability 可持續發展建築佈局

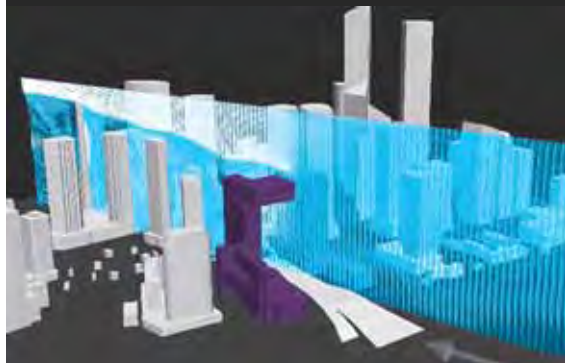




Prevailing East Wind 模擬東風情況



Prevailing North Wind 模擬北風情況



Air Ventilation Assessment
空氣流通研究



Wind Tunnel Test 風洞測試

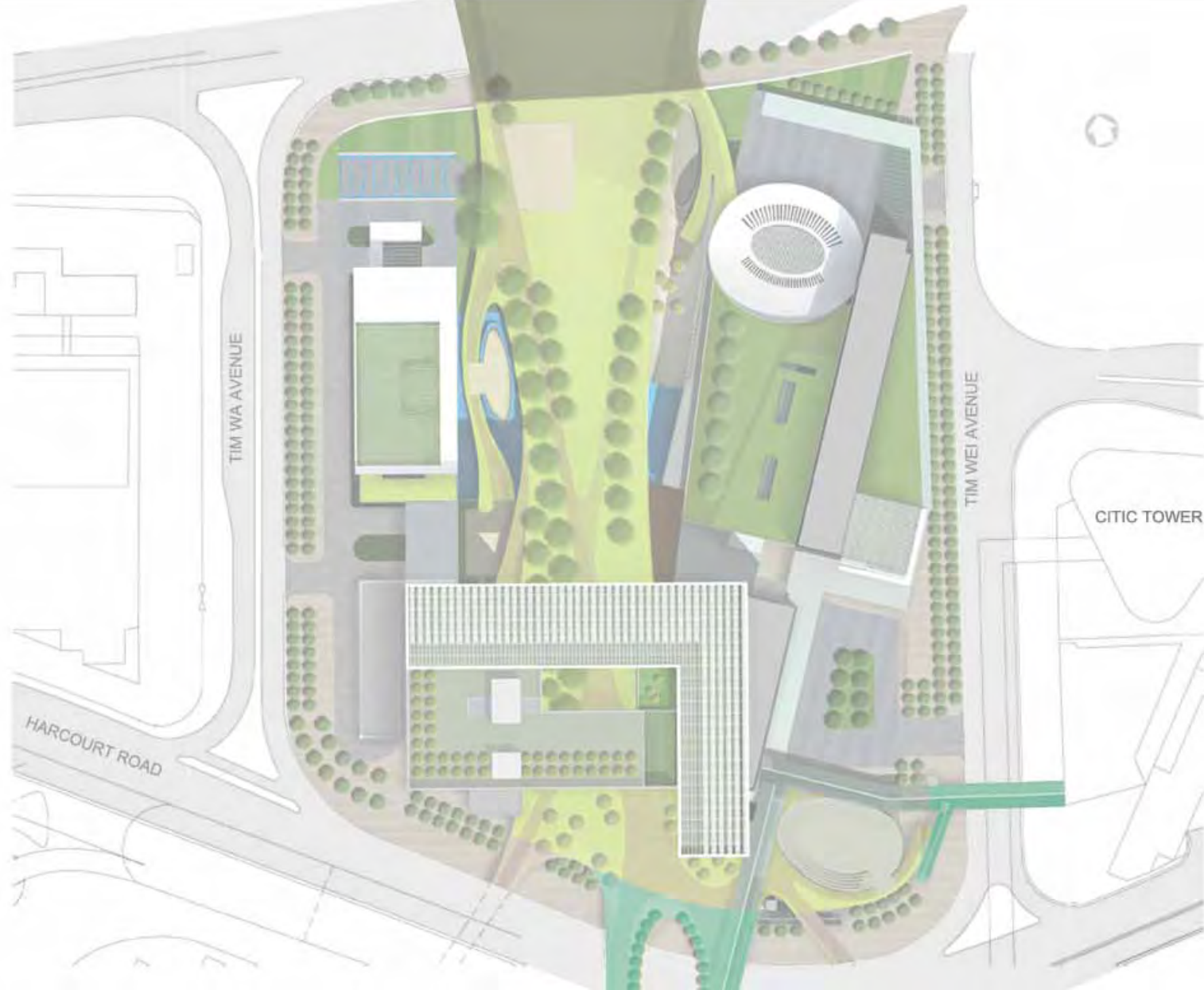
民永繫

People will be connected



NOTE : WATERFRONT PROMENADE AND P2 DECKOVER AREA NOT INCLUDED IN THE CONTRACT

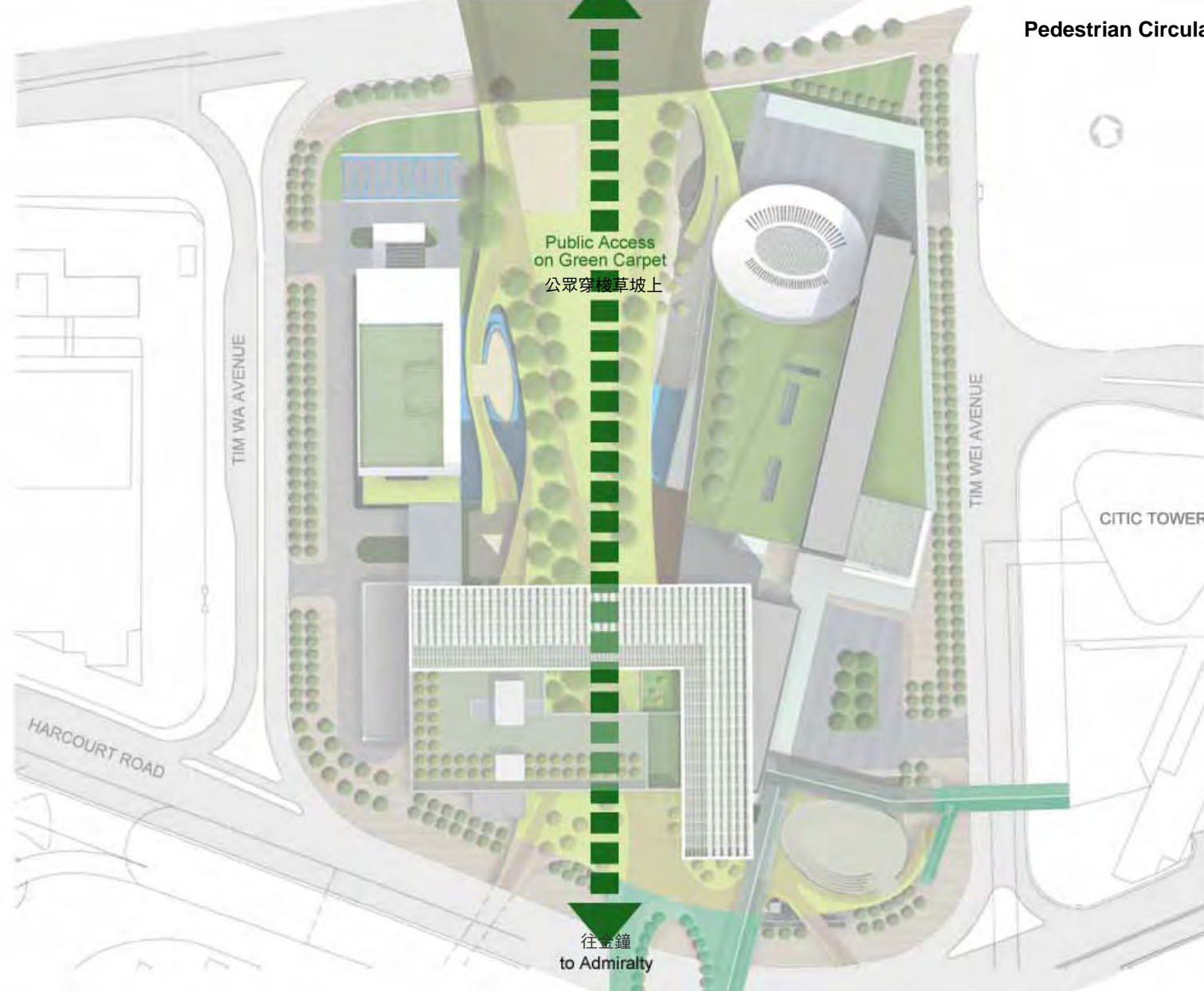




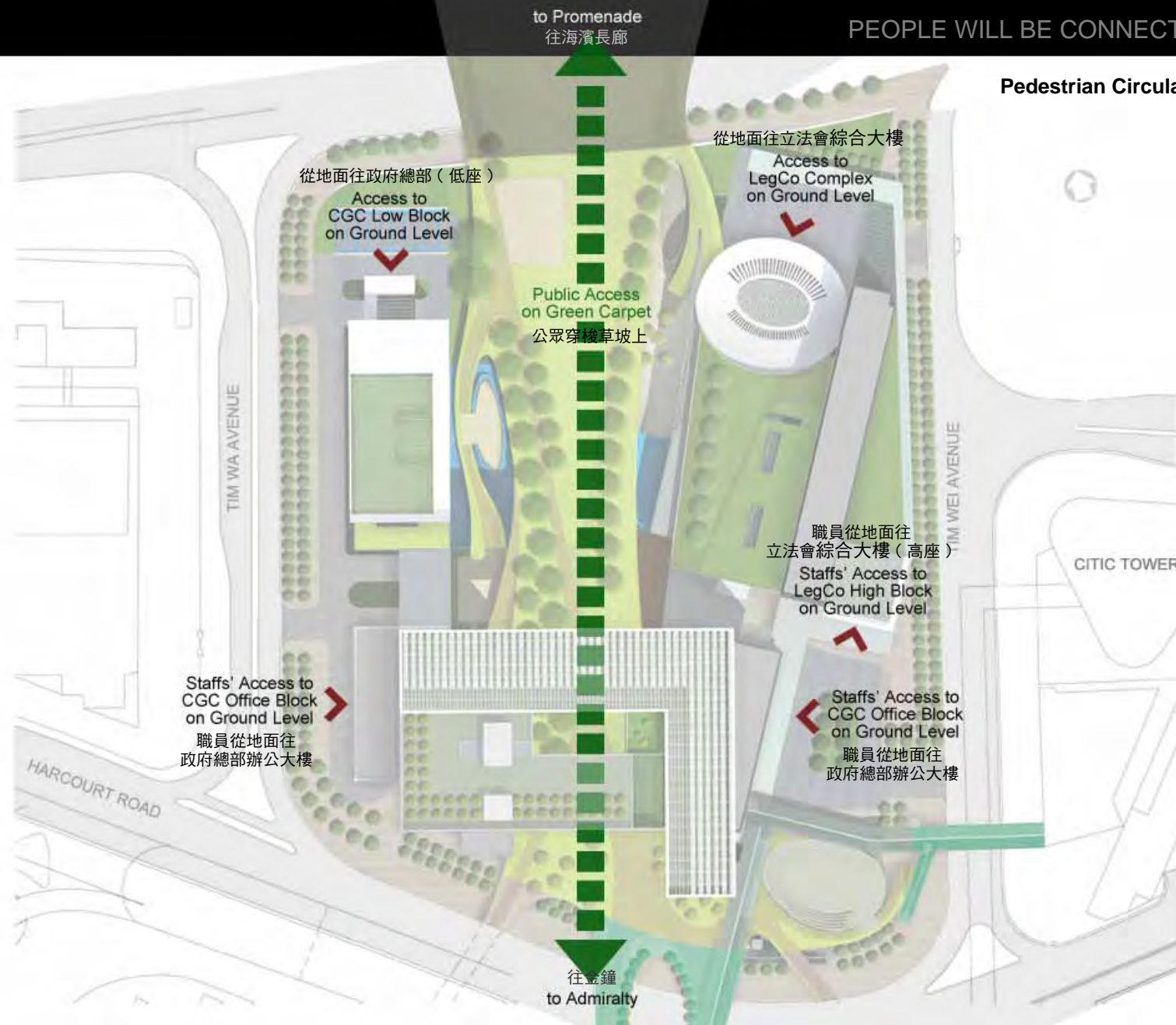
to Promenade
往海濱長廊

PEOPLE WILL BE CONNECTED • 民永繫

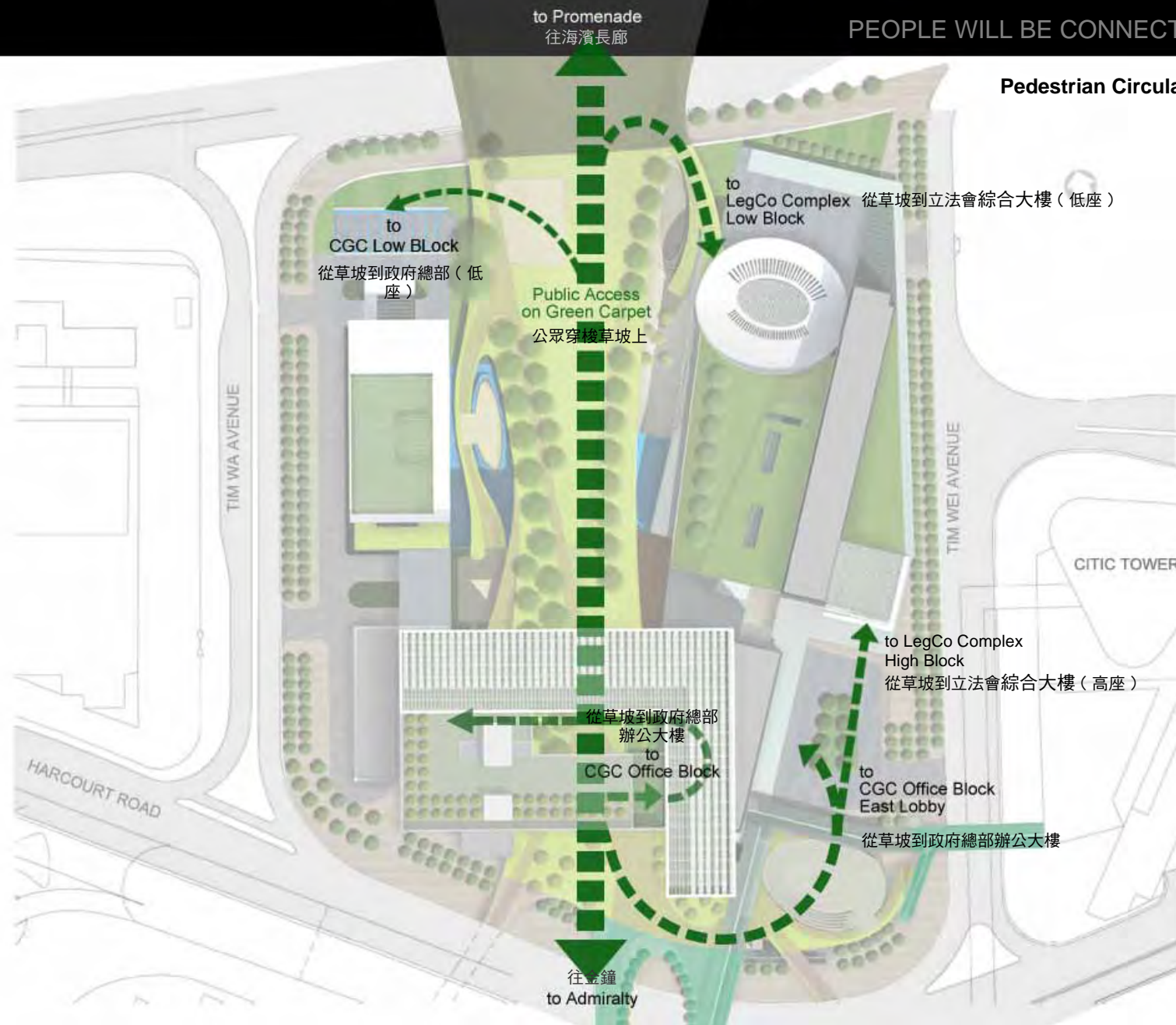
Pedestrian Circulation 行人網絡



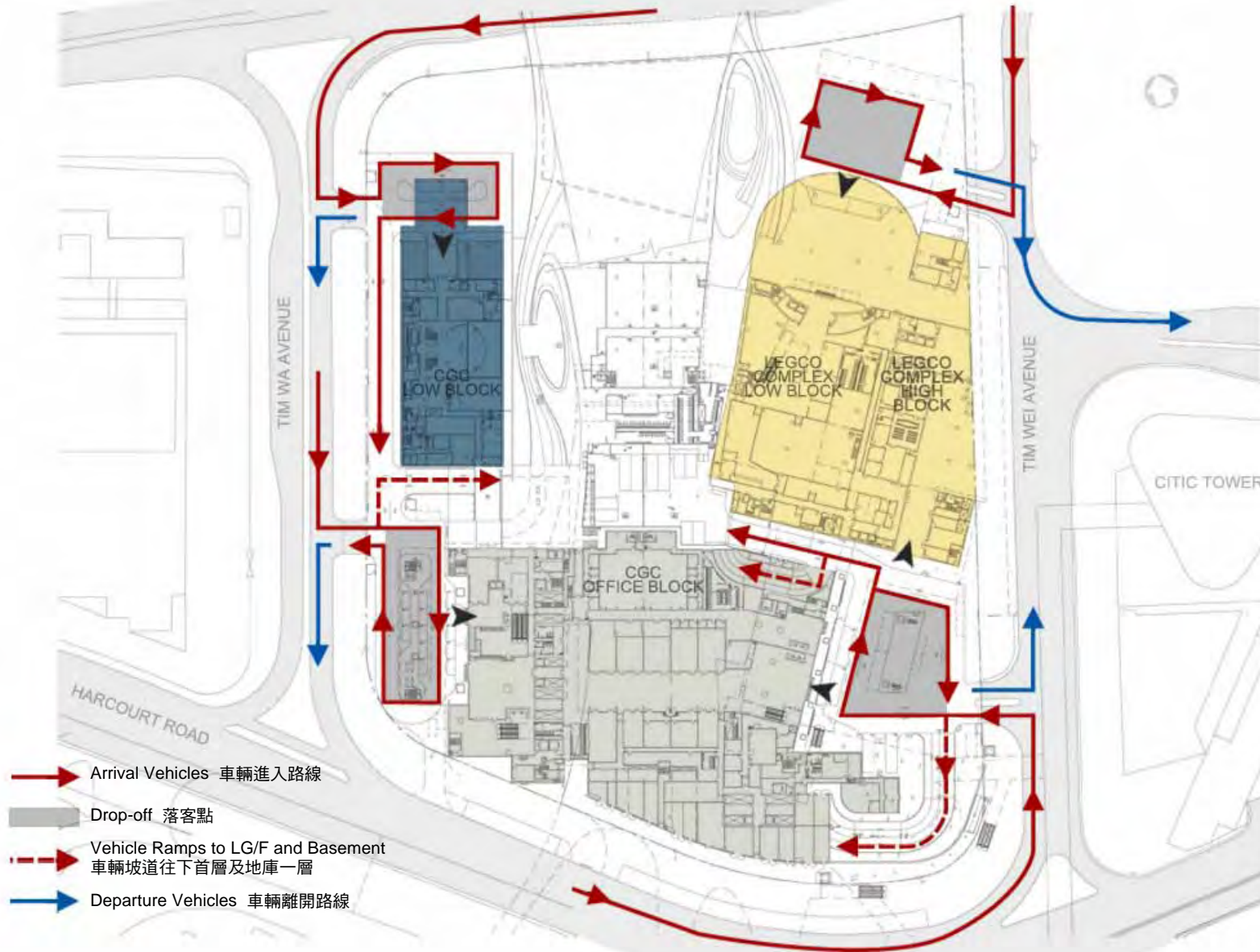
Pedestrian Circulation 行人網絡



Pedestrian Circulation 行人網絡



Vehicular Circulation 行車網絡







政府辦公樓

開敞的大門：
通達及開放

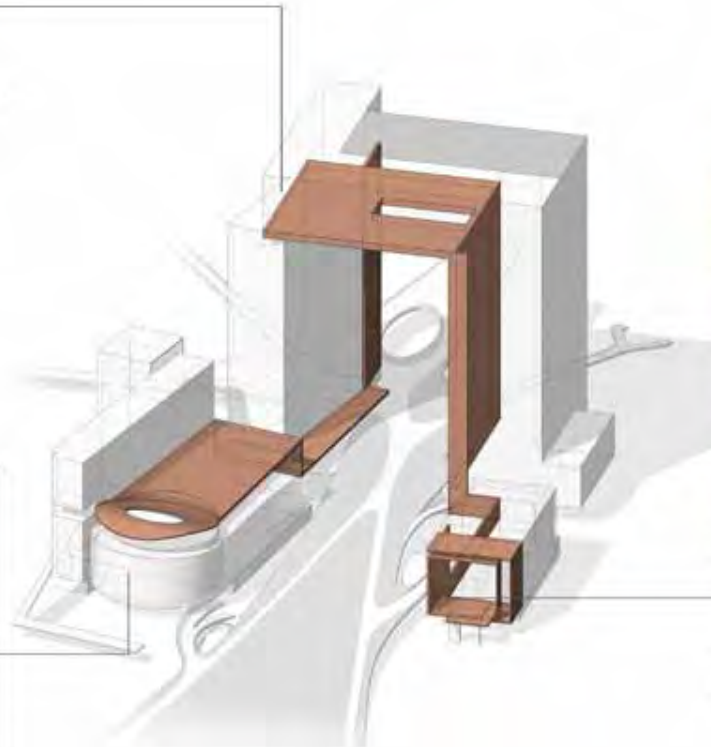
CGC Bureau Offices
An Open Portal:
Accessible and
Receptive



立法會綜合大樓

玻璃圍合的圓錐：
透明、包容、
充滿創意動力

LegCo Complex
A Glass-wrapped Cone:
Transparent, Inclusive,
Creatively Dynamic

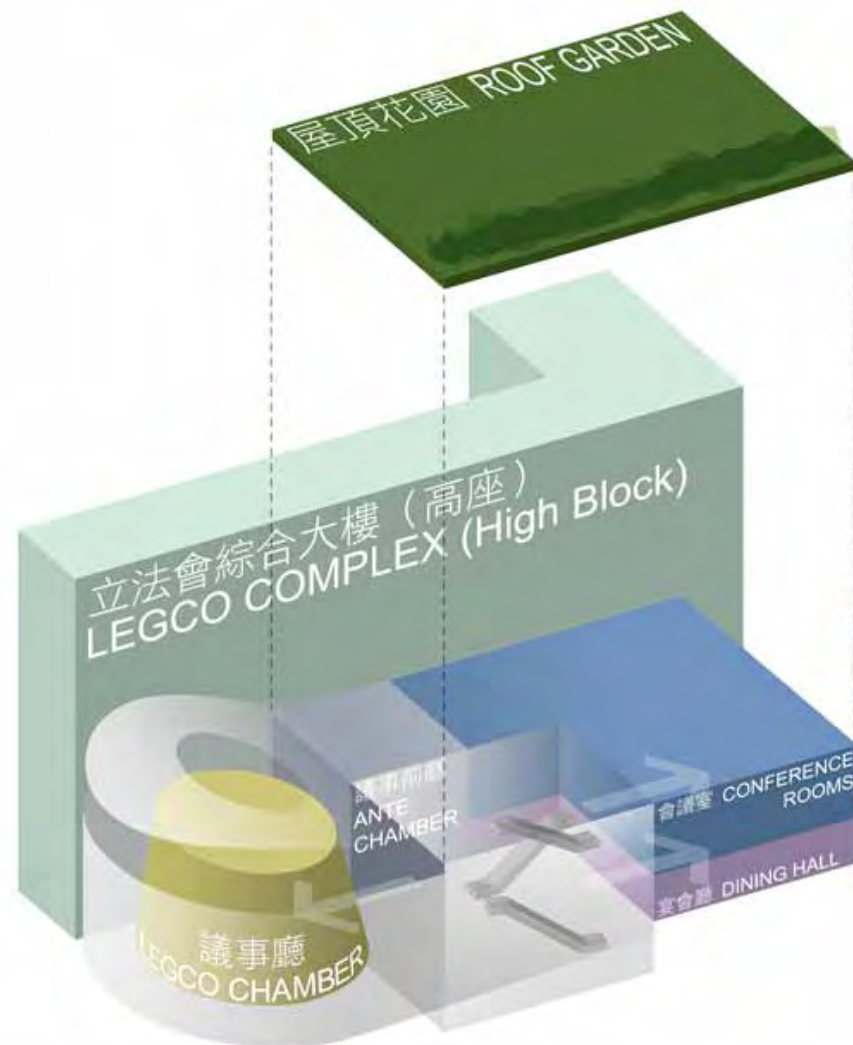


行政長官辦公樓

伸展的立方：端莊、持恆、前瞻

Chief Executive Office
An Unfolding Cube: Dignified, Steadfast &
Forward-looking







LegCo Low Block Entrance Foyer
立法會大樓低座入口中庭



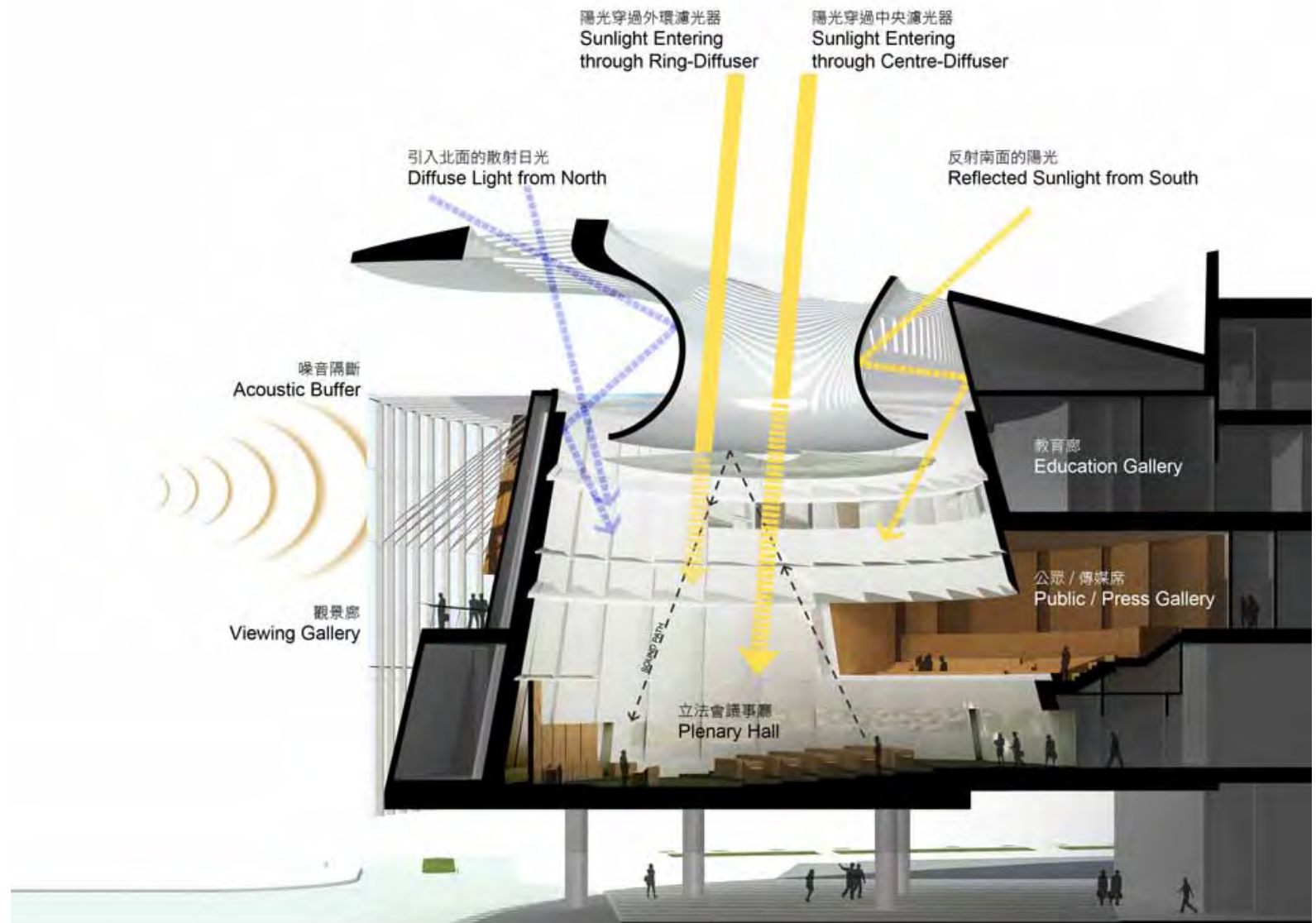
LegCo Chamber
立法會議事廳



LegCo Chamber Light Funnel
立法會議事廳採光藻井



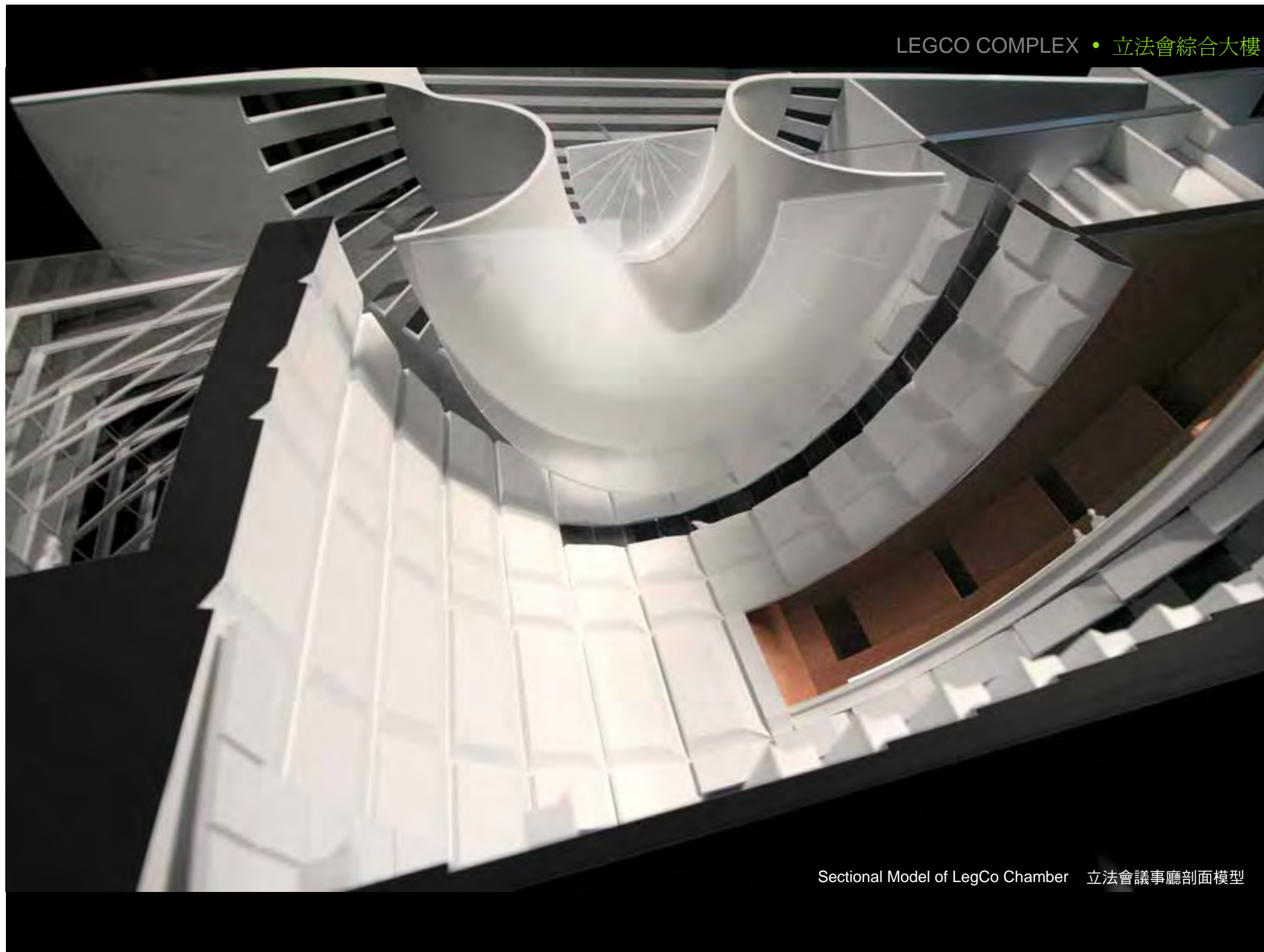
Viewing Gallery
觀景廊



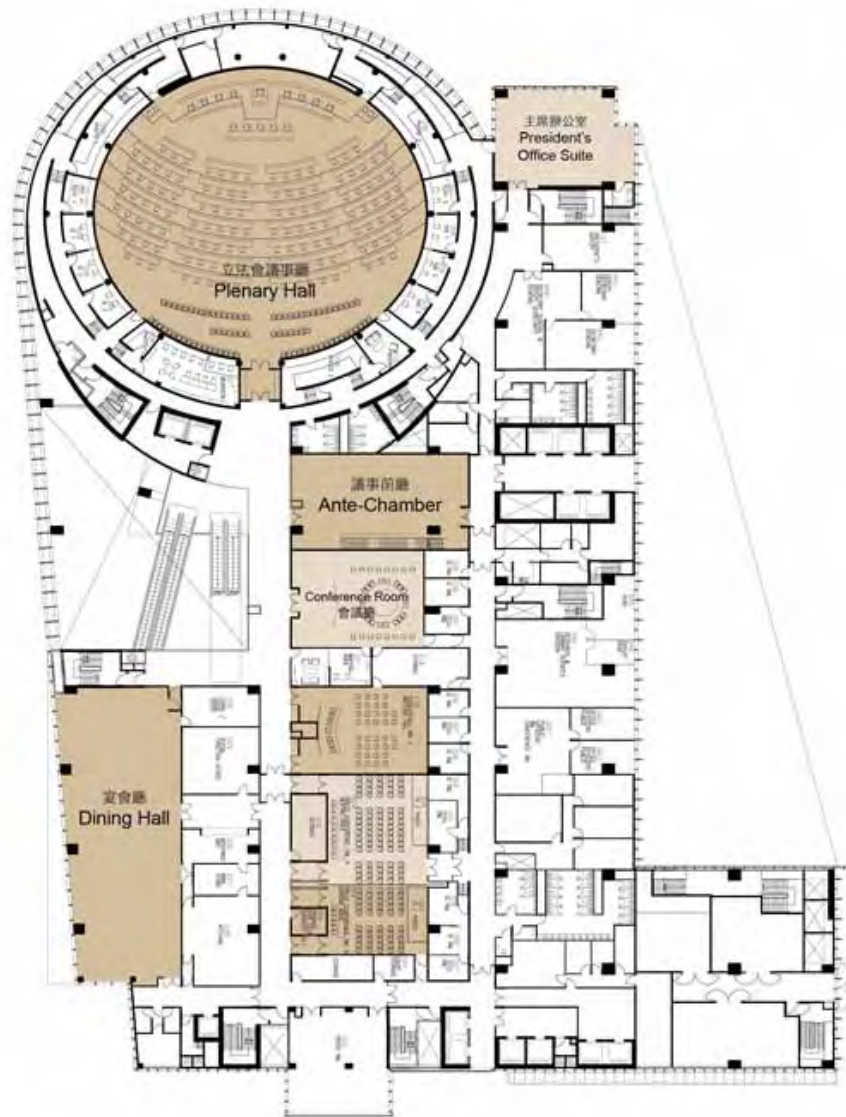
Section of LegCo Chamber 立法會議事廳剖面圖



Sectional Model of LegCo Chamber 立法會議事廳剖面模型



Sectional Model of LegCo Chamber 立法會議事廳剖面模型



1/F
一層平面圖



Conference Room A
會議室 A



Conference Room B
會議室 B



Conference Room E
會議室 E



Press Conference Room
媒體會議室



Dining Hall
立法會宴會廳

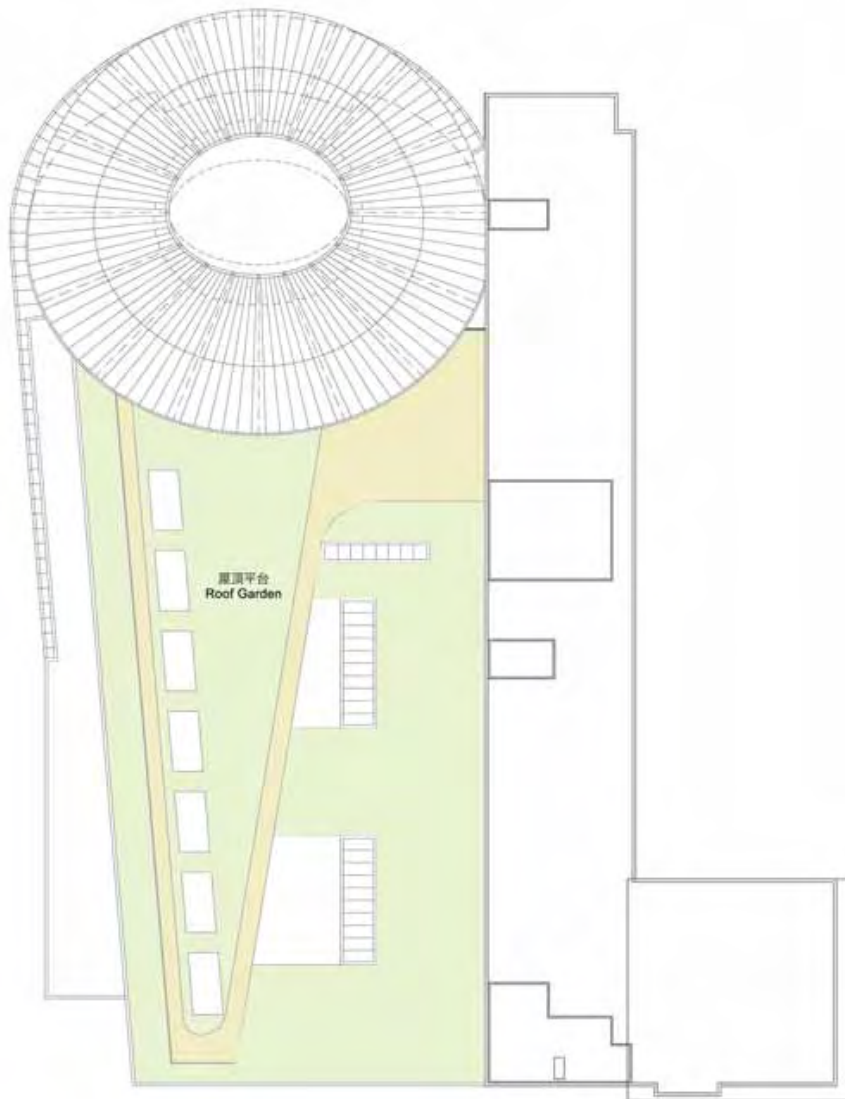




LegCo High Block Entrance Lobby
立法會綜合大樓高座入口大堂



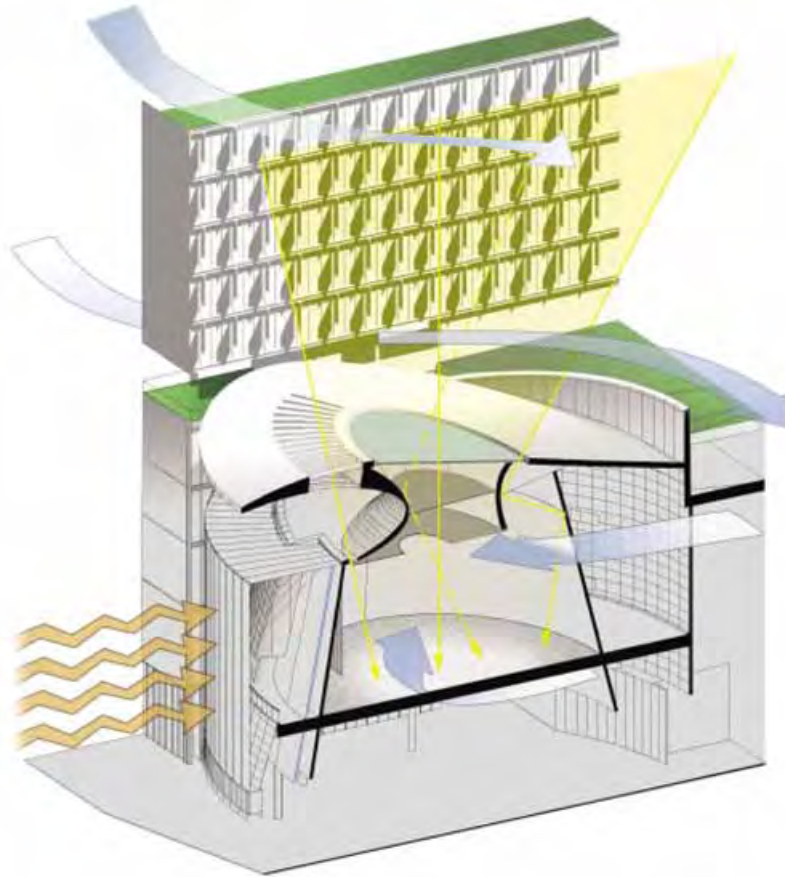
Members' Entrance Lobby
立法會議員入口大堂



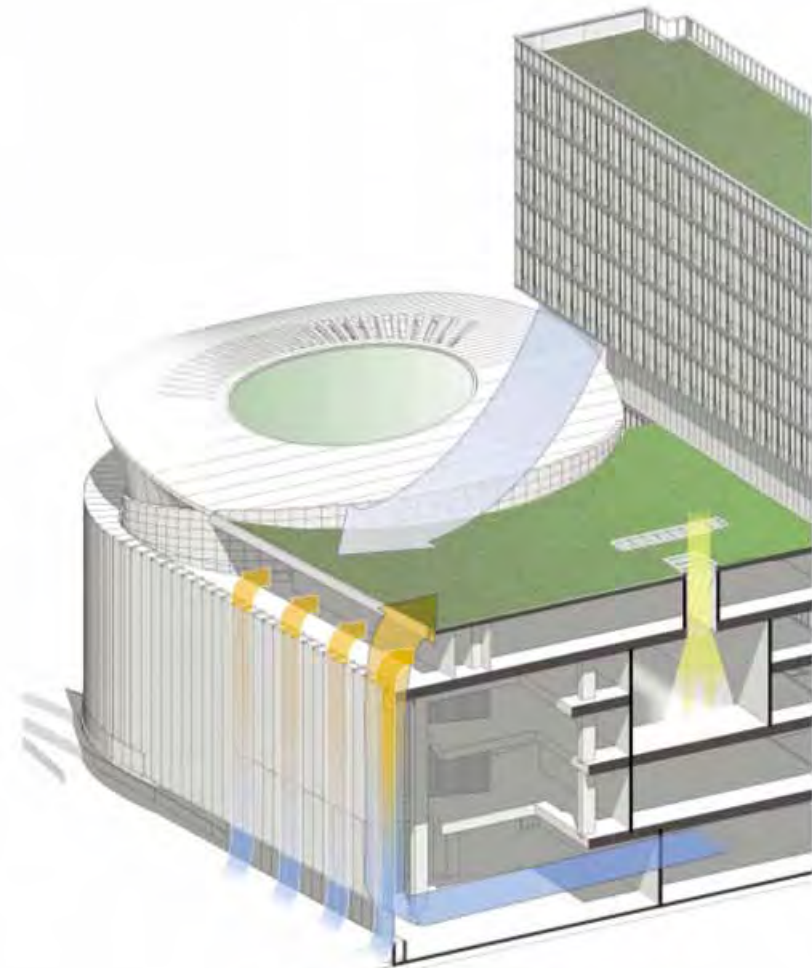
LegCo Low Block Roof Garden and High Block Roof Plan
立法會綜合大樓（低座）屋頂平台及（高座）頂層平面圖



Roof Garden at LegCo Low Block
立法會綜合大樓（低座）屋頂平台

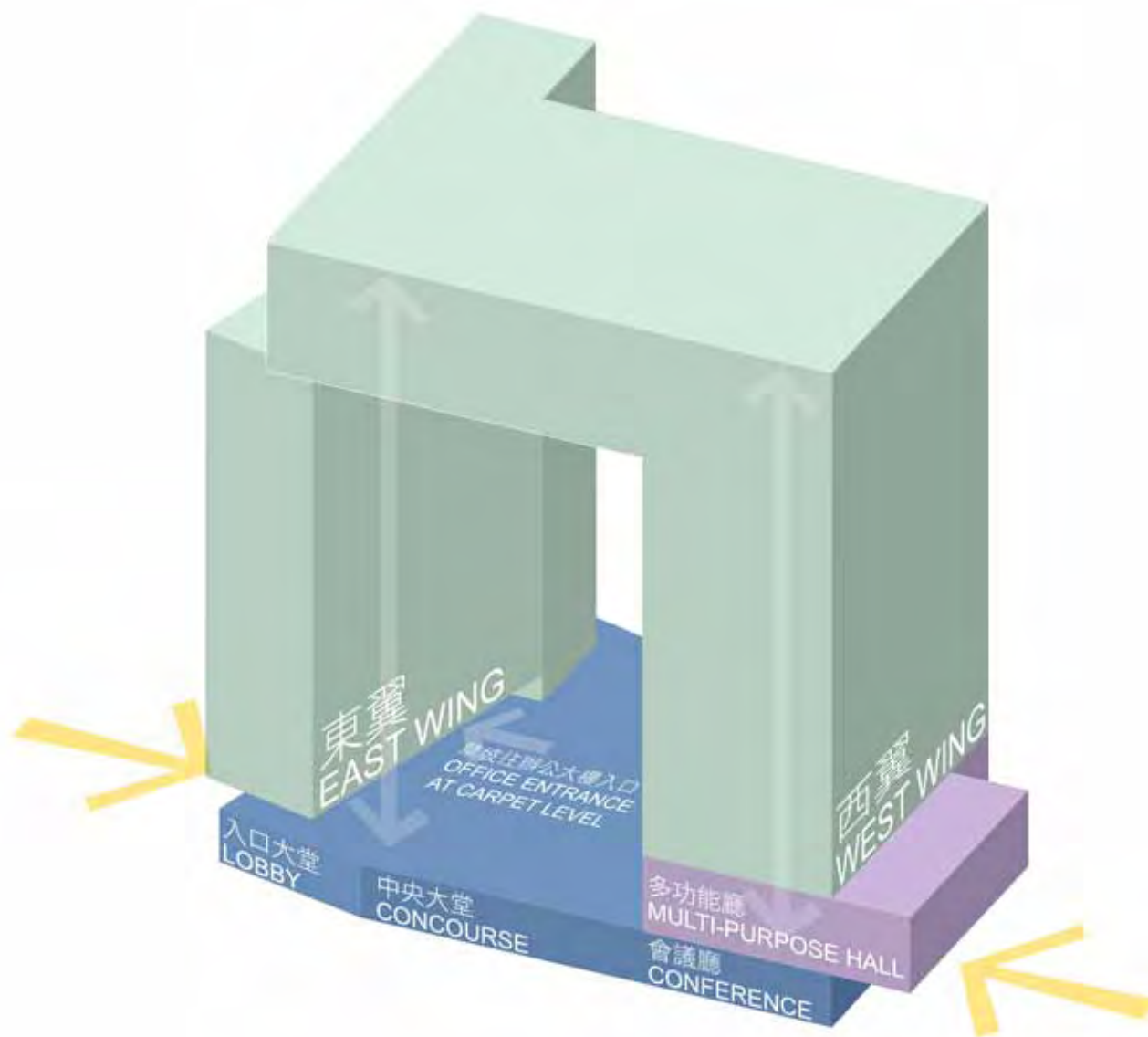


Section through LegCo Chamber
立法會議事廳剖面圖



Section through LegCo Foyer
立法會綜合大樓（低座）入口中庭剖面圖







CGC Office Block West Entrance Foyer
政府總部辦公大樓西入口大堂



CGC Office Block East Entrance Foyer
政府總部辦公大樓東入口大堂

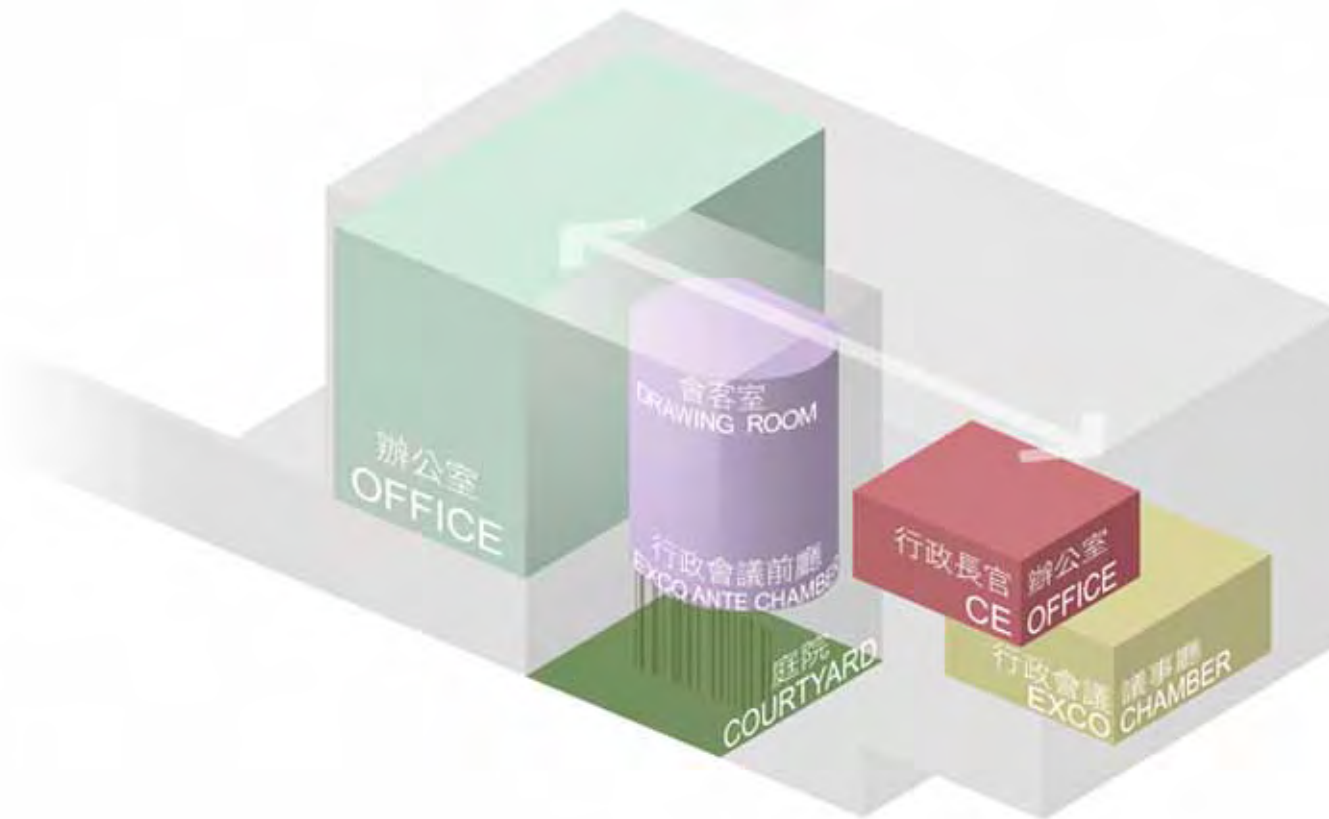


Office Concourse / Foyer
政府總部辦公大樓中央大堂



Multi-purpose Hall
多功能廳





CGC LOW BLOCK • 政府總部（低座）



CGC Low Block Entrance Foyer
政府總部（低座）入口中庭

CGC LOW BLOCK • 政府總部（低座）



Executive Council Chamber
行政會議議事廳

