



南港島綫(東段)
立法會鐵路事宜小組委員會會議

South Island Line (East)
LegCo Railway Subcommittee Meeting

二零零八年五月二日
2 May, 2008

南港島綫(東段) - 走綫
South Island Line (East) - Indicative Alignment



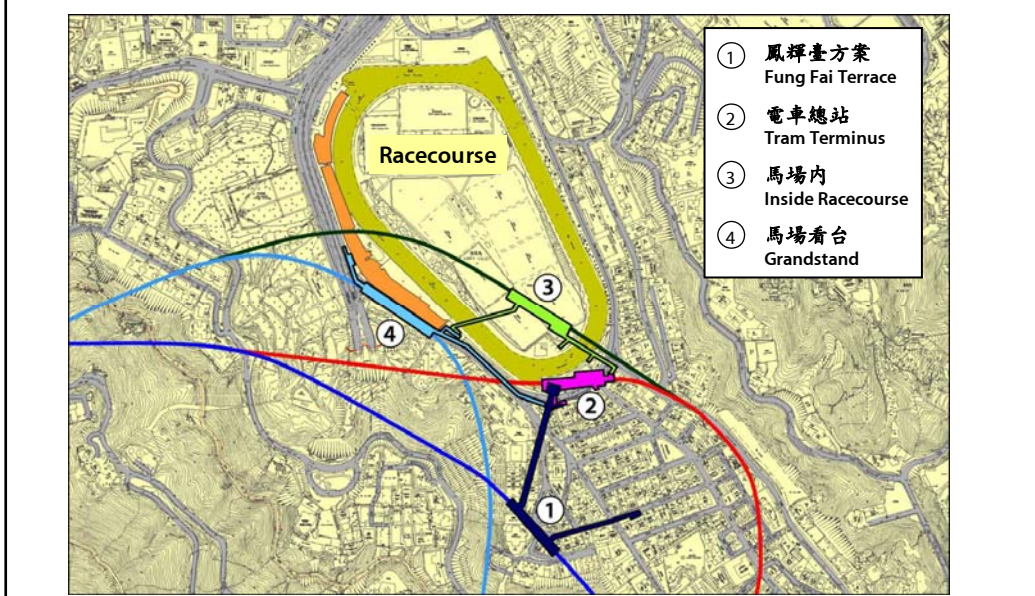
跑馬地站－位置選擇

Happy Valley Station – Location Options



跑馬地站－位置選擇

Happy Valley Station – Location Options



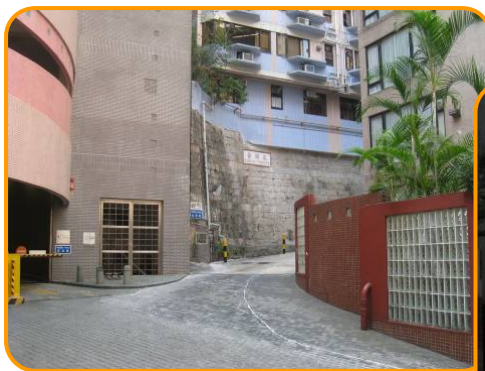
鳳輝臺方案

Happy Valley Station - Fung Fai Terrace Scheme



鳳輝臺方案

Happy Valley Station - Fung Fai Terrace Scheme



鳳輝臺附近目前情況
Current environment
near Fung Fai Terrace

鳳輝臺方案—平面圖

Happy Valley Station - Fung Fai Terrace Scheme - Plan



MTR Corporation

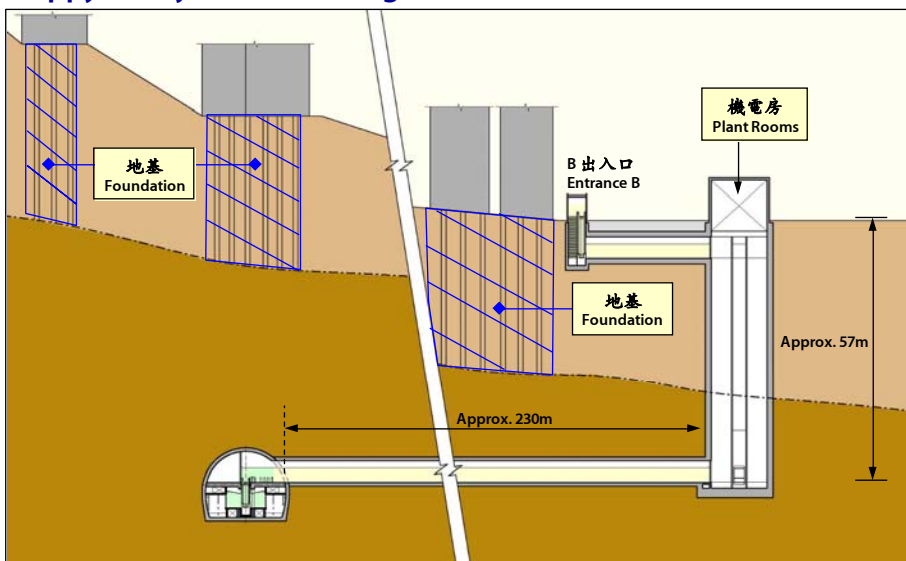
2008/5/02

Page 7



鳳輝臺方案—剖面圖

Happy Valley Station - Fung Fai Terrace Scheme - Section



MTR Corporation

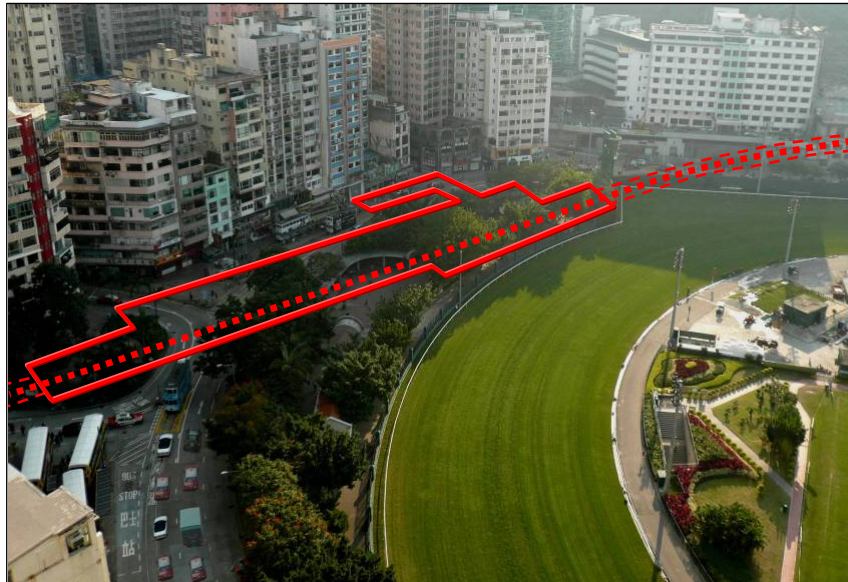
2008/5/02

Page 8



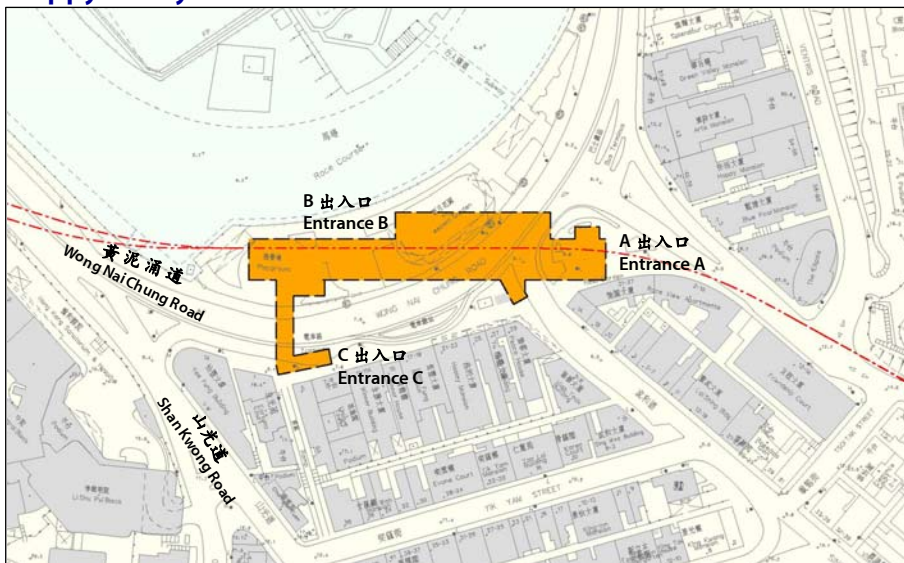
電車總站方案

Happy Valley Station - Tram Terminus Scheme



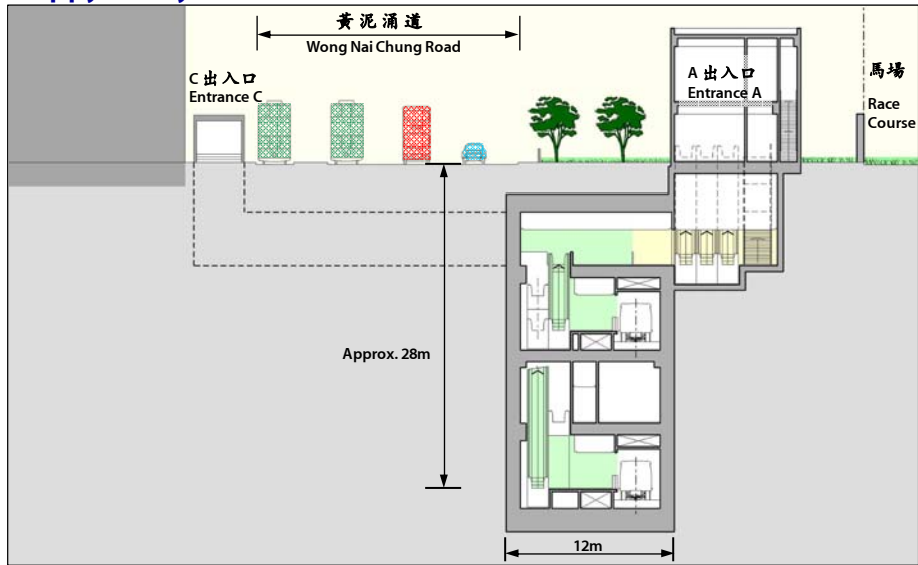
電車總站方案—平面圖

Happy Valley Station - Tram Terminus Scheme - Plan



電車總站方案一切面圖

Happy Valley Station - Tram Terminus Scheme - Section



MTR Corporation

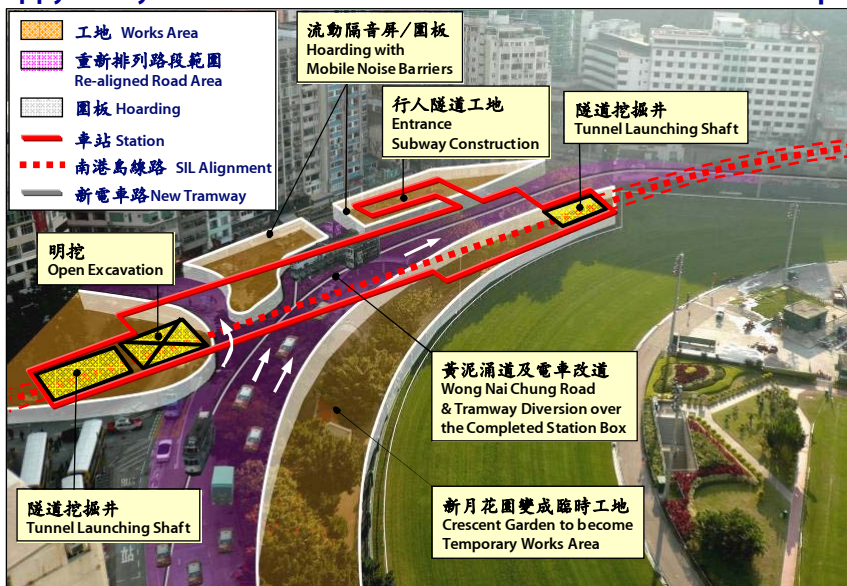
2008/5/02

Page 11



電車總站方案-工程影響

Happy Valley Station - Tram Terminus Scheme - Construction Impact



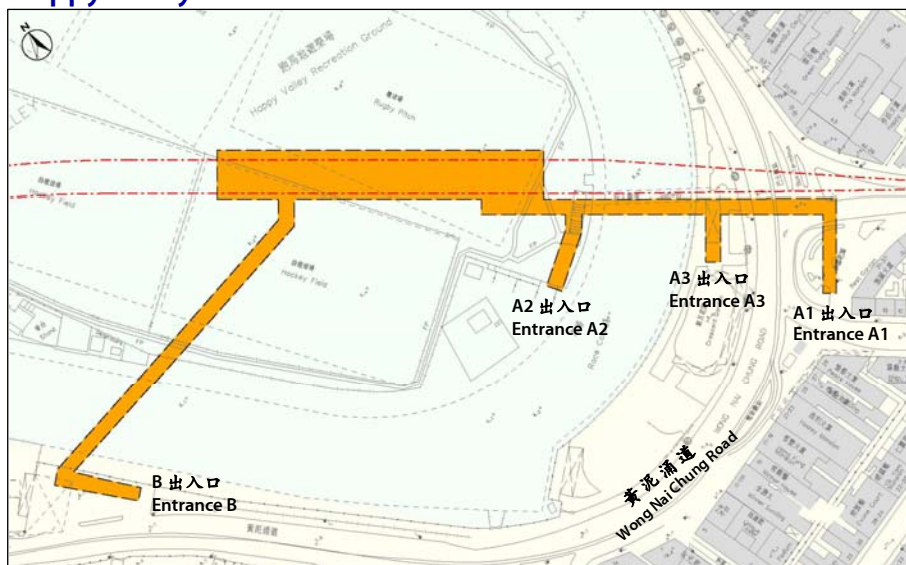
馬場內方案

Happy Valley Station – Within Racecourse Scheme



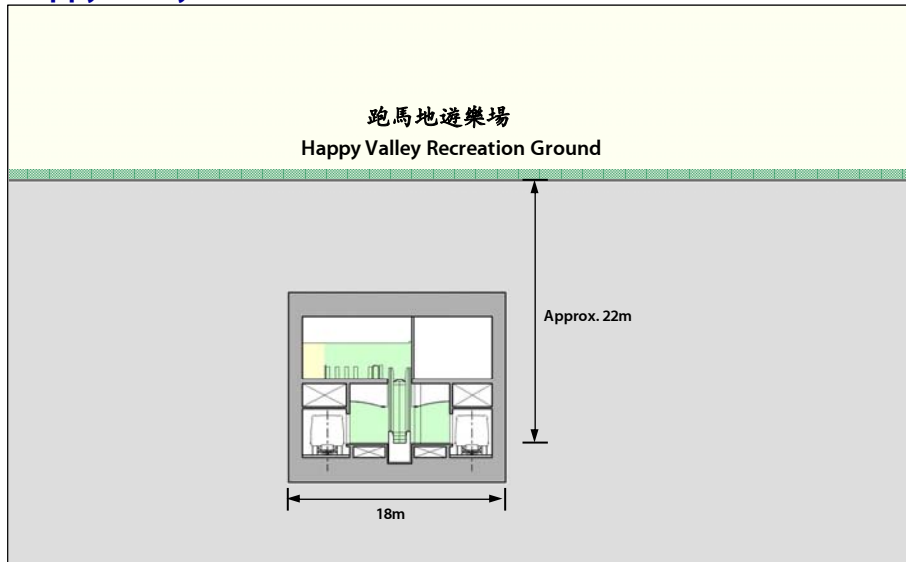
馬場內方案—平面圖

Happy Valley Station – Within Racecourse Scheme - Plan



馬場內方案一切面圖

Happy Valley Station – Within Racecourse Scheme - Section



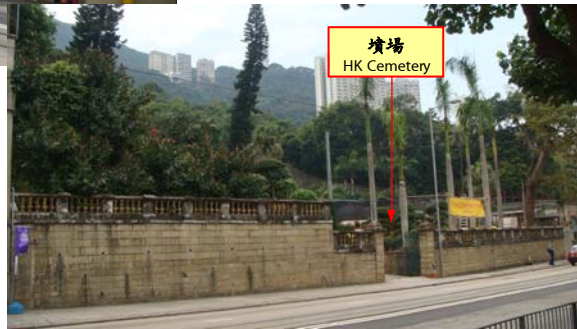
馬場內方案—工程影響

Happy Valley Station – Within Racecourse – Construction Impact



馬場看台方案

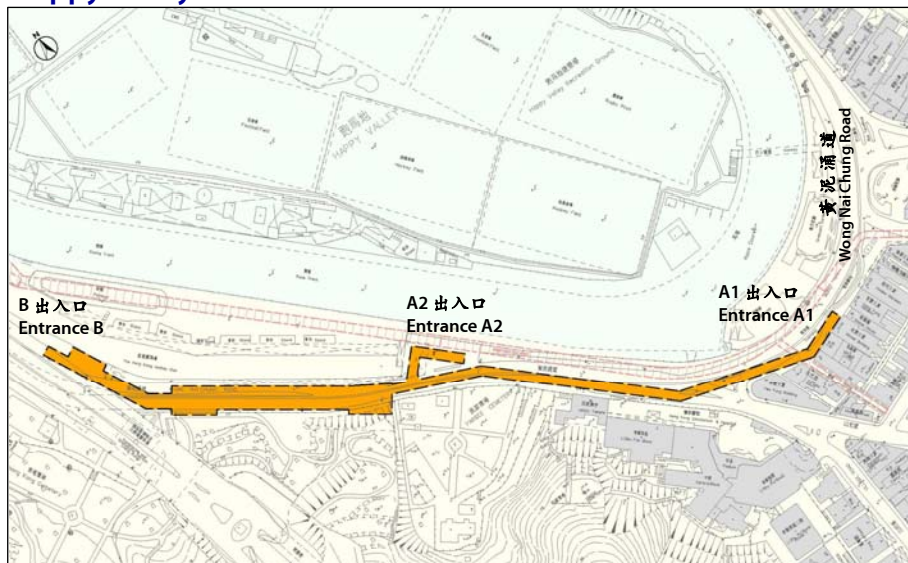
Happy Valley Station - Grandstand Scheme



MTR Corporation

馬場看台方案—平面圖

Happy Valley Station - Grandstand Scheme - Plan



MTR Corporation

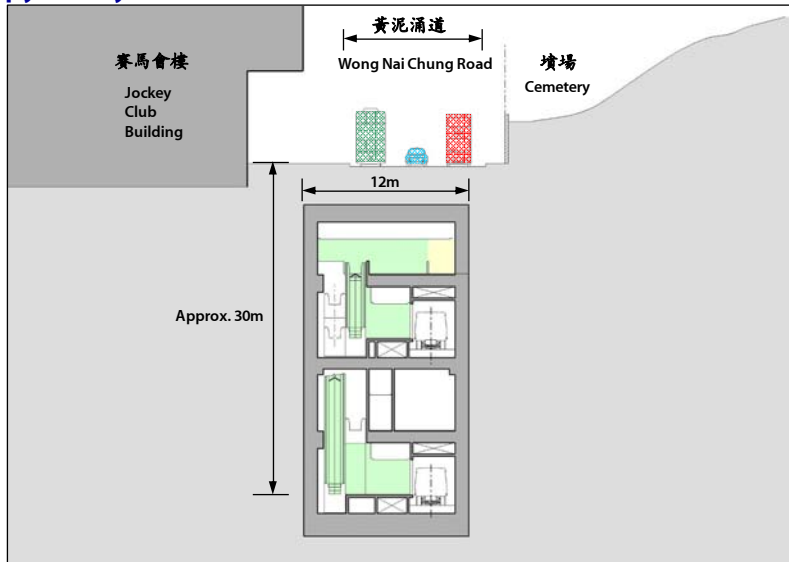
2008/5/02

Page 18



馬場看台方案一切面圖

Happy Valley Station - Grandstand Scheme - Section



MTR Corporation

2008/5/02

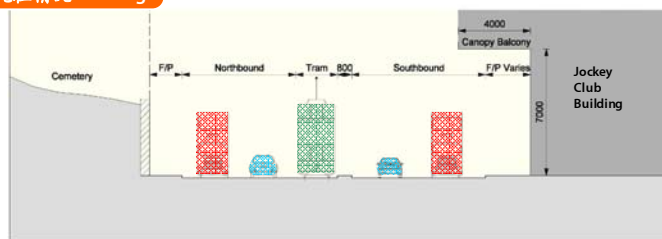
Page 19



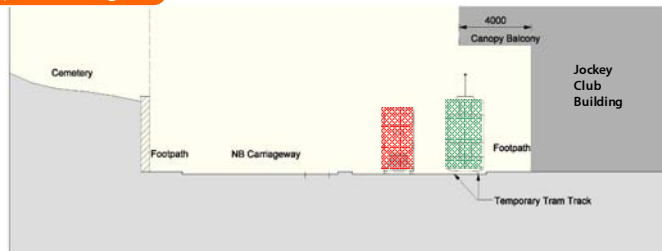
馬場看台的施工程序(1)

Construction Sequence (1) for Grandstand Option

現在情況 Existing



第一階段 Stage 1



- 封閉黃泥涌道南段交通
Close southbound Wong Nai Chung Road to Traffic
- 北向交通及電車改用
南向行車道
Divert northbound traffic
and trams onto southbound
carriageway

MTR Corporation

2008/5/02

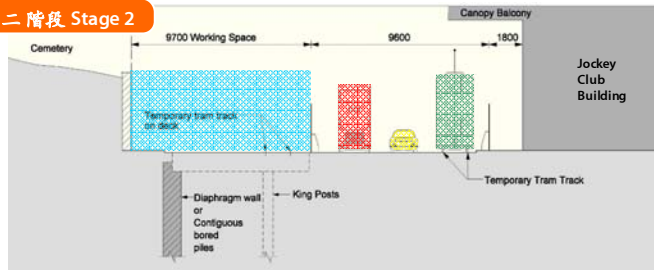
Page 20



馬場看台的施工程序(2)

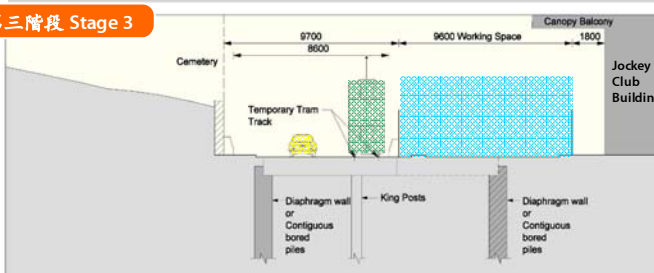
Construction Sequence (2) for Grandstand Option

第二階段 Stage 2



- 興建西面車站
Construct western half of station

第三階段 Stage 3



- 北向交通改用臨時地台
Divert northbound traffic to temporary duck
- 興建東面車站
Construct Eastern half of station
- 恢復南向行道的臨時電車軌
Reinstate southbound carriageway with temporary tram track

MTR Corporation

2008/5/02

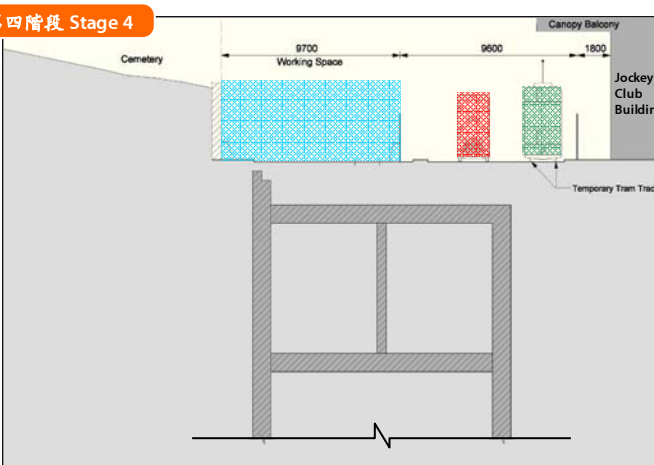
Page 21



馬場看台的施工程序(3)

Construction Sequence (3) for Grandstand Option

第四階段 Stage 4



- 北向交通及電車改用南向行車道
Divert trams and northbound traffic to southbound carriageway
- 恢復北向行車道及電車軌
Reinstate northbound carriageway and tram track
- 北向交電車改道
Divert northbound traffic and trams
- 重開南向行車道
Reopen southbound carriageway

MTR Corporation

2008/5/02

Page 22



跑馬地站方案比選

Happy Valley Station - Option Comparison

| 方案 Option | 1 鳳輝臺 Fung Fai Terrace | 2 電車總站 Tram Terminus at Wong Nai Chung Road | 3 馬場內 Within the Racecourse | 4 馬場看台 Adjacent to HKJC Grandstand |
|---|------------------------------|---|-----------------------------------|--|
| 馬場站帶來的邊際成本 Marginal cost over no HAV scheme | + \$1.6B | + \$2.4B | + \$2.8B | + \$2.1B |
| 增加走線長度 Marginal route length over no HAV Scheme | 1.5km | 2.4km | 2.5km | 1.5km |
| 工程額外時間 Programme Implications additional time for completion | 10 months | 23 months | 11 months | 31 months |



End