

Our ref. : ASD 13/95200/PWP/MM (66MM)
Your ref. : CB 1/F/2/6(II)
Tel : 2867 3601
Fax : 2801 4706

23 July 2010

Clerk to Public Works Subcommittee
(Attn : Ms Debbie YAU)
Legislative Council Secretariat
Legislative Council Building
8 Jackson Road, Central
Hong Kong

Dear Ms YAU,

**Public Works Subcommittee
Follow-up to meeting on 13 June 2008**

**PWSC(2008-09)24 – Provision of a general out-patient clinic,
an integrated community mental health support services centre
and a long stay care home in Tin Shui Wai Area 109**

I refer to your letter referenced CB 1/F/2/6(II) of 16 June 2008 to the Secretary for Financial Services and the Treasury.

In response to the request raised by the Hon. Emily LAU at the Public Works Subcommittee meeting held on 13 June 2008, I write to provide information on the design of **66MM** (PWSC(2008-09)24 – Provision of a general out-patient clinic, an integrated community mental health support services centre and a long stay care home in Tin Shui Wai Area 109).

The design-and-build contract for the project has commenced in June 2009. According to the present design, the building comprises 6 storeys as follows –

- | | | |
|----------------------------|---|--|
| <u>Roof and upper roof</u> | : | Mechanical plant rooms, water tank and pump rooms |
| <u>5/F</u> | : | Welfare facilities (an integrated community mental health support services centre) |
| <u>3/F and 4/F</u> | : | Welfare facilities (long stay care home) |

/ 2/F

- 2/F : Health facilities (a community multi-specialty clinic and an integrated clinic)
- 1/F : Health facilities (a general clinic) and a link-bridge connection to the existing footbridge at Wetland Park Road
- G/F : Health facilities (central dispensary) and a covered carpark with loading/unloading area

The site layout plan, building section, artist's impressions and floor plans of the building are enclosed at Annexes 1 to 11 for Members' reference.

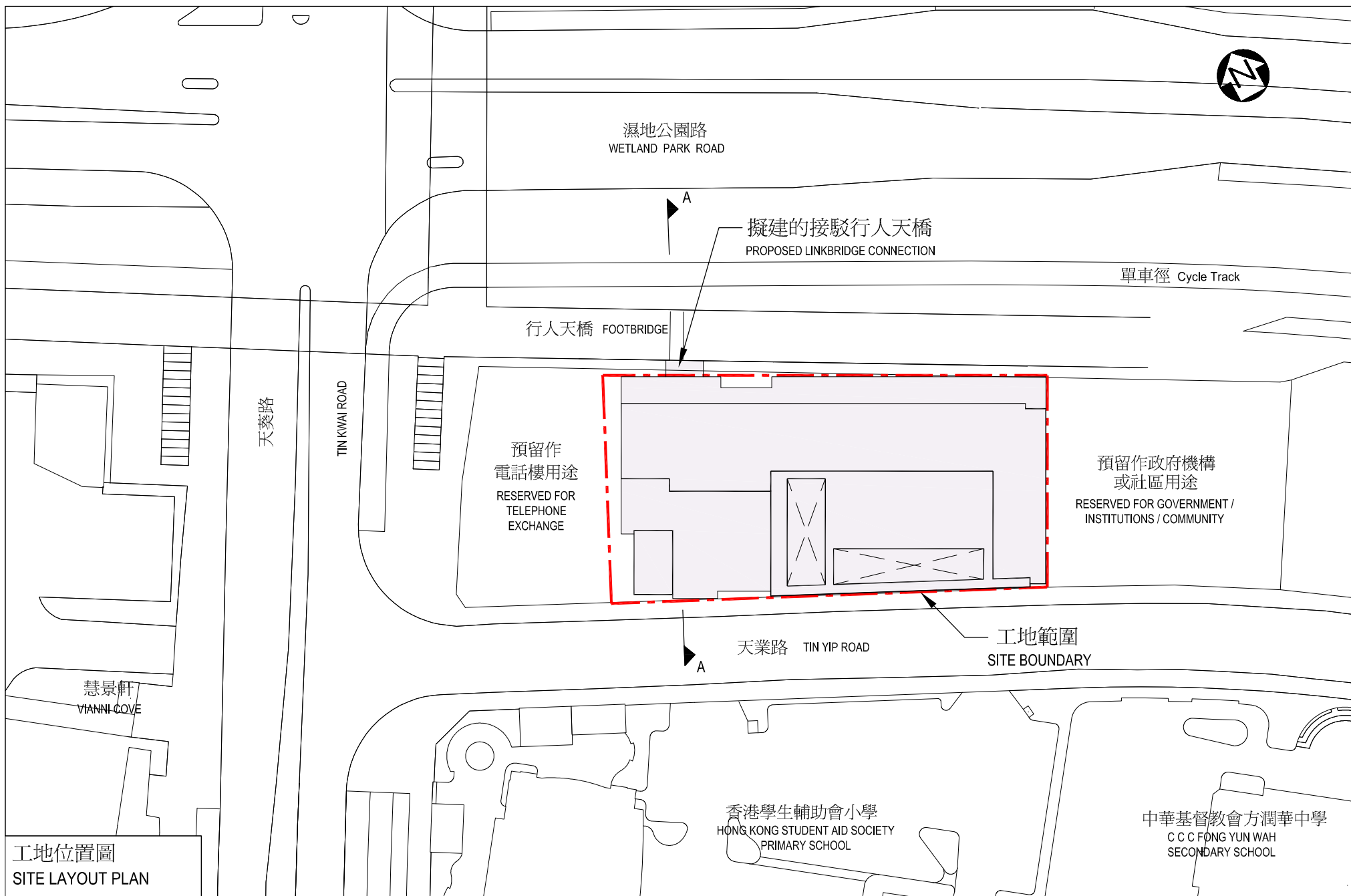
Yours faithfully,

(Mrs Marigold LAU)
Director of Architectural Services

cc Secretary for Food and Health
(Attn : Mr Bruno LUK) (Fax : 2840 0467)

Secretary for Financial Services and the Treasury
(Attn : Miss Belinda WONG) (Fax : 2147 5240)

Secretary for Development
(Attn : Mr Harry MA) (Fax : 2537 1961)



工地位置圖
SITE LAYOUT PLAN

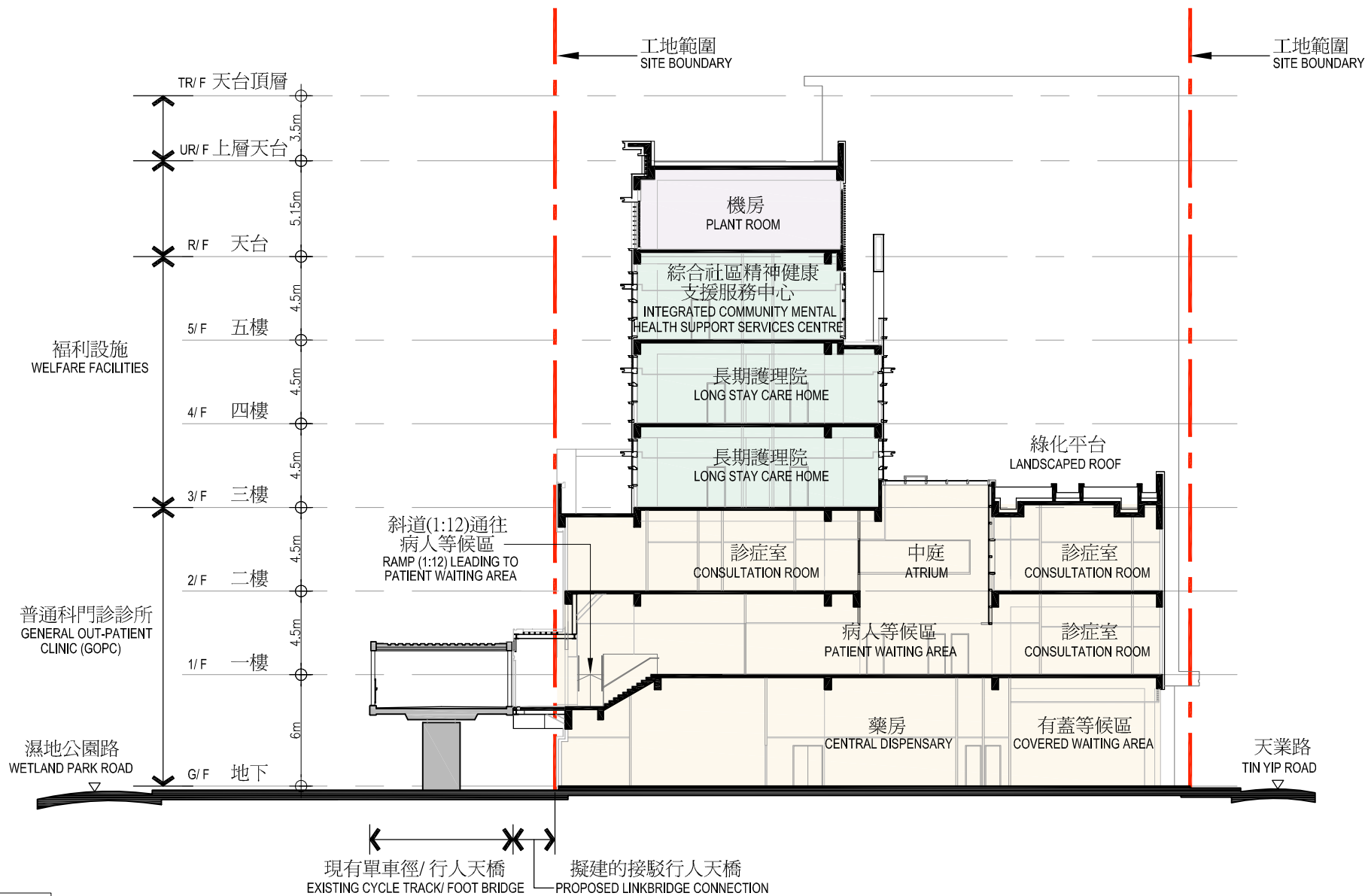
66MM 在天水圍第109區興建一所普通科門診診所，
一所綜合社區精神健康支援服務中心及一所長期護理院
PROVISION OF A GENERAL OUTPATIENT CLINIC, AN INTEGRATED COMMUNITY MENTAL HEALTH
SUPPORT SERVICES CENTRE AND A LONG STAY CARE HOME IN TIN SHUI WAI AREA 109

drawn by 繪圖	KUZO TANG	date 日期	06/10
approved 覆核	BEN YEUNG	date 日期	06/10

drawing no. 編號	AB/7229/XA01
----------------	--------------

scale 比例	1 : 750
office 辦事處	工程策劃管理處 PROJECT MANAGEMENT BRANCH

	ARCHITECTURAL SERVICES
	DEPARTMENT 建築署



剖面圖 A-A
SECTION A-A

66MM 在天水圍第109區興建一所普通科門診診所，一所綜合社區精神健康支援服務中心及一所長期護理院
PROVISION OF A GENERAL OUTPATIENT CLINIC, AN INTEGRATED COMMUNITY MENTAL HEALTH SUPPORT SERVICES CENTRE AND A LONG STAY CARE HOME IN TIN SHUI WAI AREA 109

drawn by 繪圖 KUZU TANG
approved 覆核 BEN YEUNG
date 日期 06/10
date 日期 06/10

drawing no. 編號 AB/7229/XA02
scale 比例 1 : 300

office 辦事處 工程策劃管理處
PROJECT MANAGEMENT BRANCH



ARCHITECTURAL SERVICES DEPARTMENT 建築署



由西南面望向大樓之構思圖
 VIEW OF THE PROPOSED DEVELOPMENT FROM SOUTH-WESTERN DIRECTION (ARTIST'S IMPRESSION)

66MM 在天水圍第109區興建一所普通科門診診所，
 一所綜合社區精神健康支援服務中心及一所長期護理院
 PROVISION OF A GENERAL OUTPATIENT CLINIC, AN INTEGRATED COMMUNITY MENTAL HEALTH
 SUPPORT SERVICES CENTRE AND A LONG STAY CARE HOME IN TIN SHUI WAI AREA 109

drawn by 繪圖	KUZO TANG	date 日期	06/10
approved 覆核	BEN YEUNG	date 日期	06/10

drawing no. 編號	AB/7229/XA03
----------------	--------------

scale 比例	NIL
office 辦事處	工程策劃管理處 PROJECT MANAGEMENT BRANCH

	ARCHITECTURAL SERVICES
	DEPARTMENT 建築署



由西北面望向大樓之構思圖
 VIEW OF THE PROPOSED DEVELOPMENT FROM NORTH-WESTERN DIRECTION (ARTIST'S IMPRESSION)

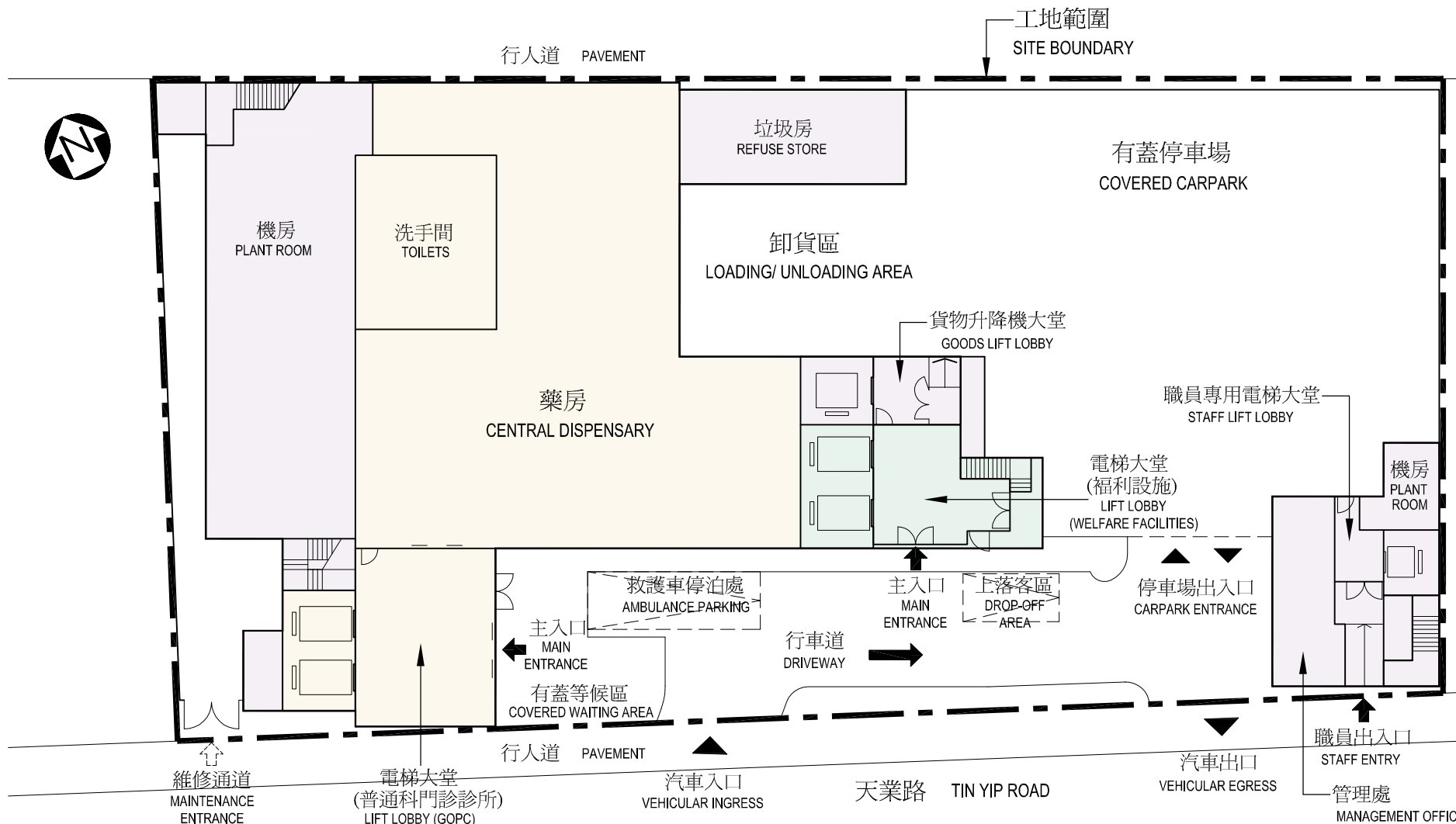
66MM 在天水圍第109區興建一所普通科門診診所，
 一所綜合社區精神健康支援服務中心及一所長期護理院
 PROVISION OF A GENERAL OUTPATIENT CLINIC, AN INTEGRATED COMMUNITY MENTAL HEALTH
 SUPPORT SERVICES CENTRE AND A LONG STAY CARE HOME IN TIN SHUI WAI AREA 109

drawn by 繪圖	KUZO TANG	date 日期	06/10
approved 覆核	BEN YEUNG	date 日期	06/10

drawing no. 編號	AB/7229/XA04
----------------	--------------

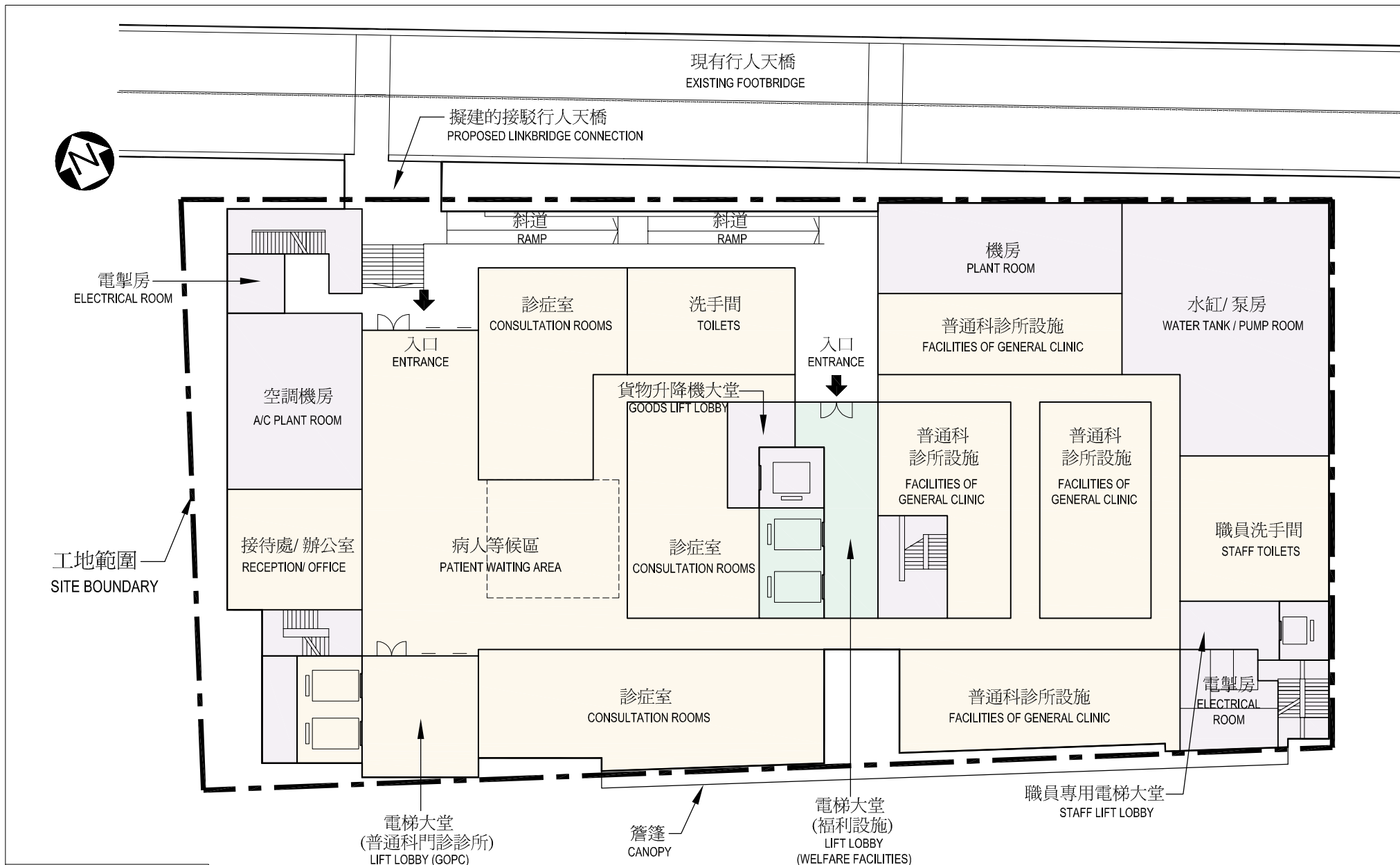
scale 比例	NIL
office 辦事處	工程策劃管理處 PROJECT MANAGEMENT BRANCH

	ARCHITECTURAL SERVICES
	DEPARTMENT 建築署



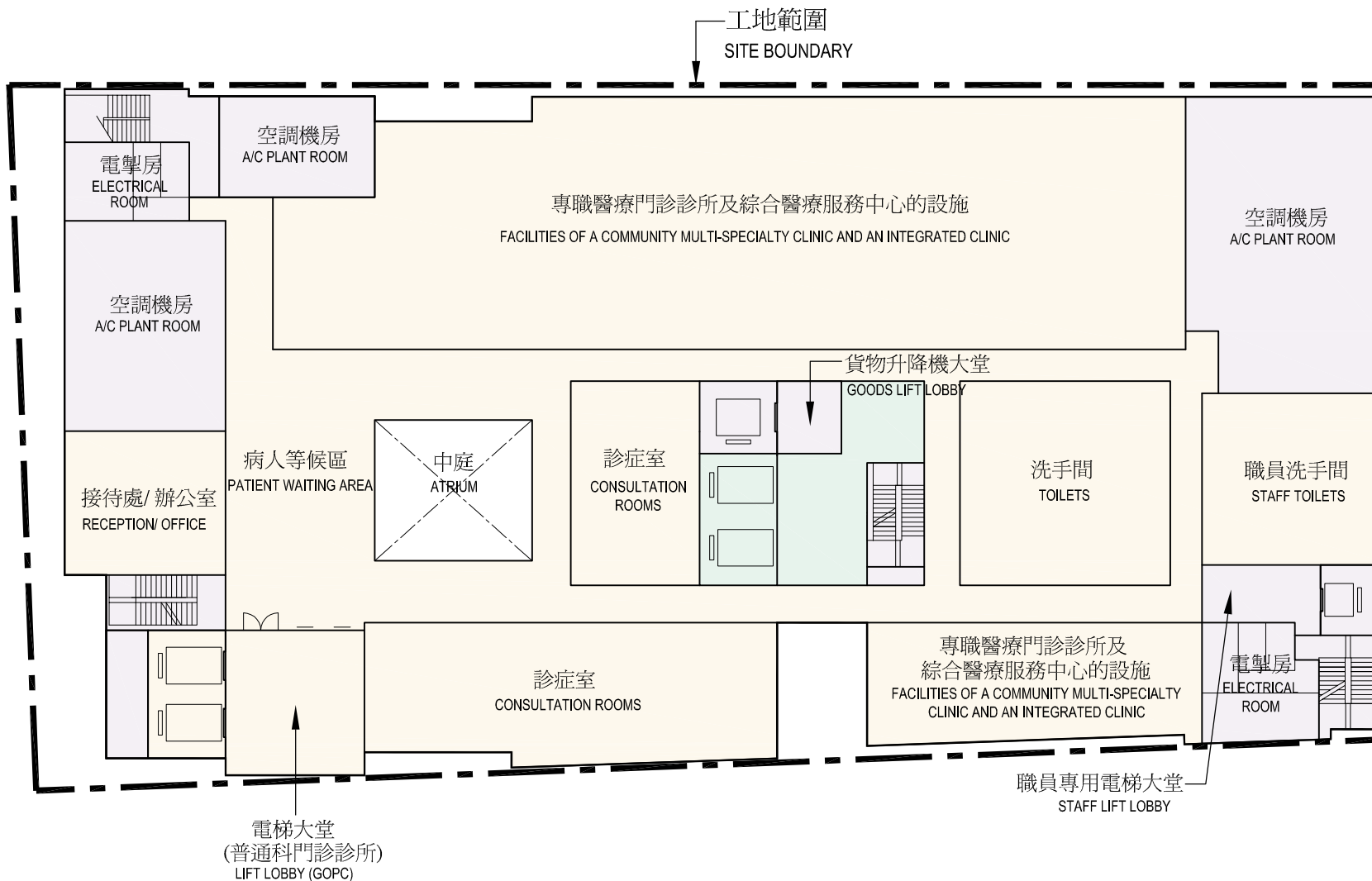
地下平面圖
FLOOR PLAN - G/F

66MM 在天水圍第109區興建一所普通科門診診所， 一所綜合社區精神健康支援服務中心及一所長期護理院 PROVISION OF A GENERAL OUTPATIENT CLINIC, AN INTEGRATED COMMUNITY MENTAL HEALTH SUPPORT SERVICES CENTRE AND A LONG STAY CARE HOME IN TIN SHUI WAI AREA 109	drawn by 繪圖 KUZU TANG	date 日期 06/10	drawing no. 編號 AB/7229/XA05	scale 比例 1 : 300	office 辦事處 工程策劃管理處 PROJECT MANAGEMENT BRANCH	 ARCHITECTURAL SERVICES DEPARTMENT 建築署
	approved 覆核 BEN YEUNG	date 日期 06/10				



一樓平面圖
FLOOR PLAN - 1/F

66MM 在天水圍第109區興建一所普通科門診診所， 一所綜合社區精神健康支援服務中心及一所長期護理院 PROVISION OF A GENERAL OUTPATIENT CLINIC, AN INTEGRATED COMMUNITY MENTAL HEALTH SUPPORT SERVICES CENTRE AND A LONG STAY CARE HOME IN TIN SHUI WAI AREA 109	drawn by 繪圖 KUZU TANG date 日期 06/10	drawing no. 編號 AB/7229/XA06 date 日期 06/10	scale 比例 1 : 300	office 辦事處 工程策劃管理處 PROJECT MANAGEMENT BRANCH	 ARCHITECTURAL SERVICES DEPARTMENT 建築署
	approved 覆核 BEN YEUNG				



二樓平面圖
FLOOR PLAN - 2/F

66MM 在天水圍第109區興建一所普通科門診診所，
一所綜合社區精神健康支援服務中心及一所長期護理院
PROVISION OF A GENERAL OUTPATIENT CLINIC, AN INTEGRATED COMMUNITY MENTAL HEALTH
SUPPORT SERVICES CENTRE AND A LONG STAY CARE HOME IN TIN SHUI WAI AREA 109

drawn by 繪圖	KUZO TANG	date 日期	06/10
approved 覆核	BEN YEUNG	date 日期	06/10

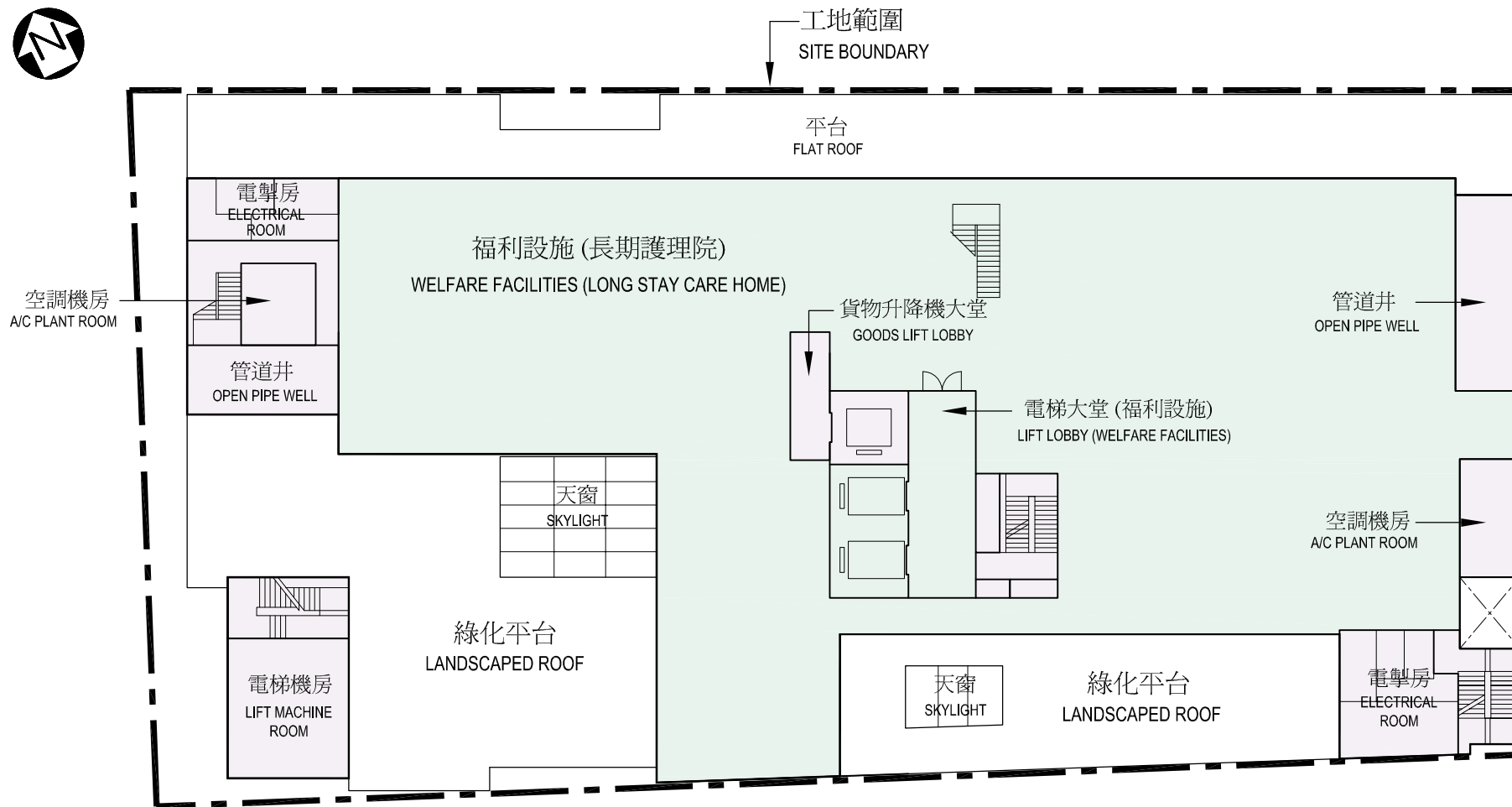
drawing no. 編號	AB/7229/XA07
----------------	--------------

scale 比例
1 : 300


office 辦事處
工程策劃管理處
PROJECT MANAGEMENT BRANCH

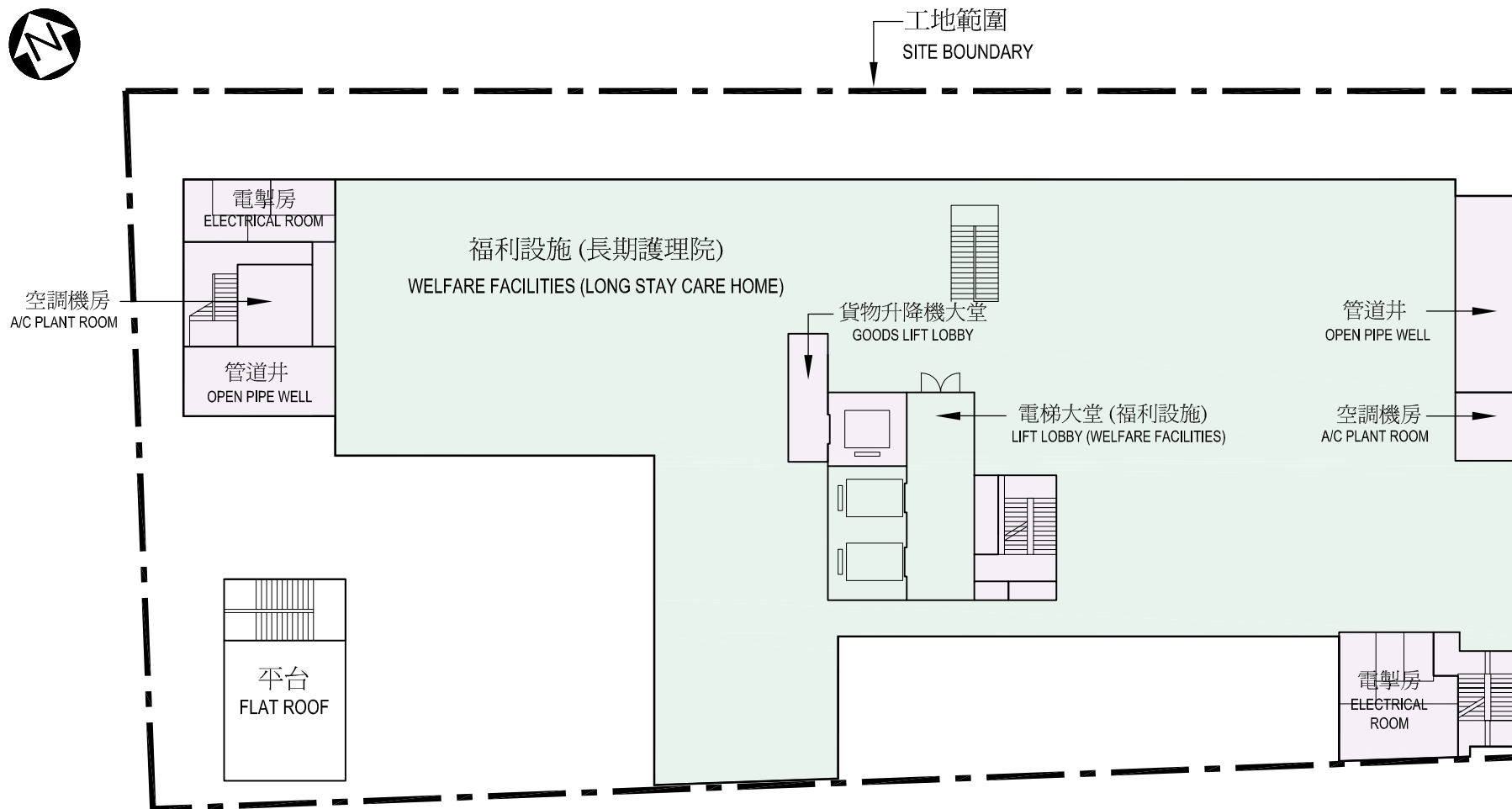


ARCHITECTURAL
SERVICES
DEPARTMENT 建築署



三樓平面圖
FLOOR PLAN - 3/F

66MM 在天水圍第109區興建一所普通科門診所， 一所綜合社區精神健康支援服務中心及一所長期護理院 PROVISION OF A GENERAL OUTPATIENT CLINIC, AN INTEGRATED COMMUNITY MENTAL HEALTH SUPPORT SERVICES CENTRE AND A LONG STAY CARE HOME IN TIN SHUI WAI AREA 109	drawn by 繪圖 KUZU TANG	date 日期 06/10	drawing no. 編號 AB/7229/XA08	scale 比例 1 : 300	office 辦事處 工程策劃管理處 PROJECT MANAGEMENT BRANCH	 ARCHITECTURAL SERVICES DEPARTMENT 建築署
	approved 覆核 BEN YEUNG	date 日期 06/10				



四樓平面圖
FLOOR PLAN - 4/F

66MM 在天水圍第109區興建一所普通科門診診所，
一所綜合社區精神健康支援服務中心及一所長期護理院
PROVISION OF A GENERAL OUTPATIENT CLINIC, AN INTEGRATED COMMUNITY MENTAL HEALTH
SUPPORT SERVICES CENTRE AND A LONG STAY CARE HOME IN TIN SHUI WAI AREA 109

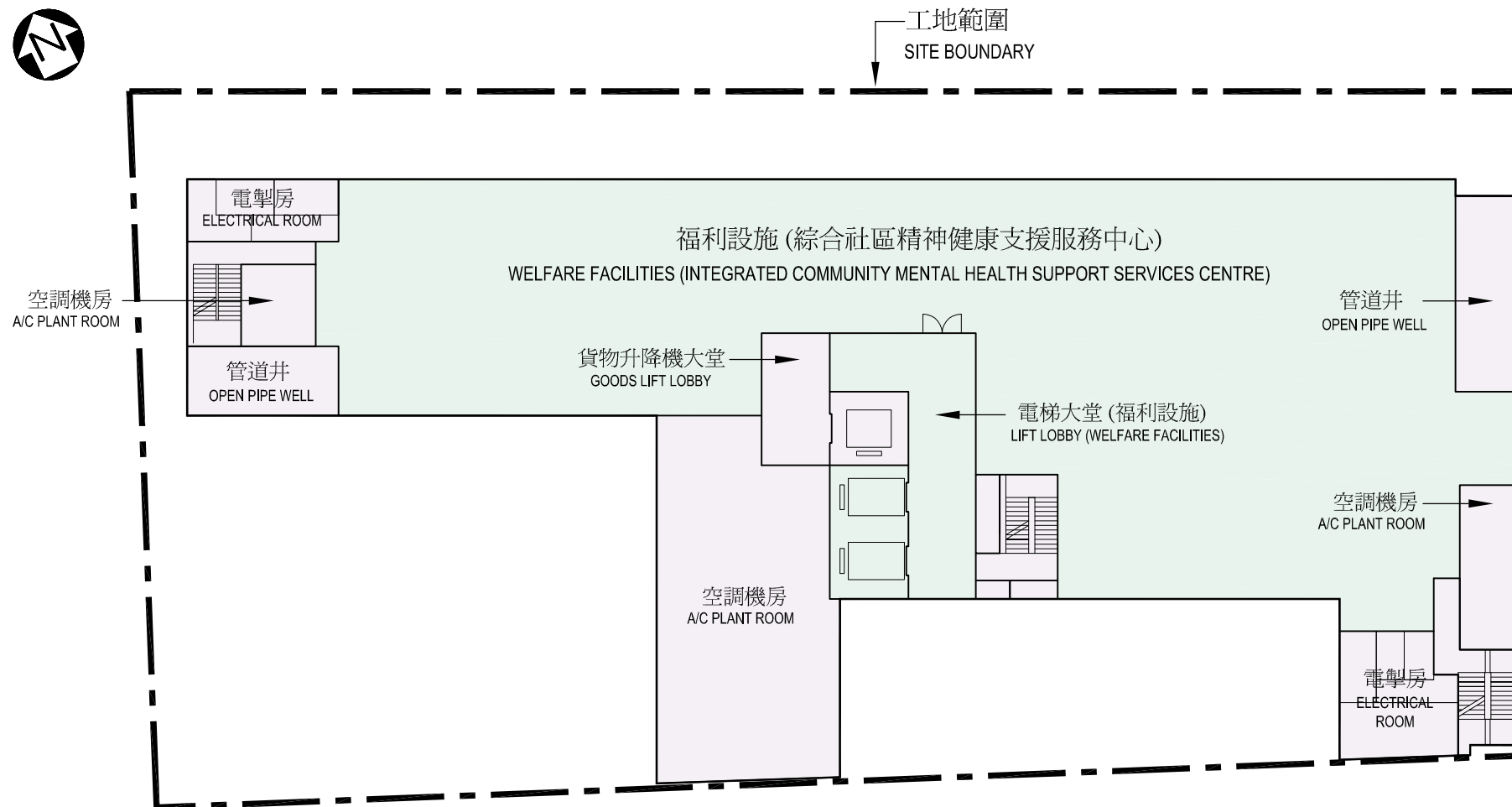
drawn by 繪圖	KUZO TANG	date 日期	06/10
approved 覆核	BEN YEUNG	date 日期	06/10

drawing no. 編號	AB/7229/XA09
----------------	--------------

scale 比例	1 : 300
office 辦事處	工程策劃管理處 PROJECT MANAGEMENT BRANCH



ARCHITECTURAL
SERVICES
DEPARTMENT 建築署



五樓平面圖
FLOOR PLAN - 5/F

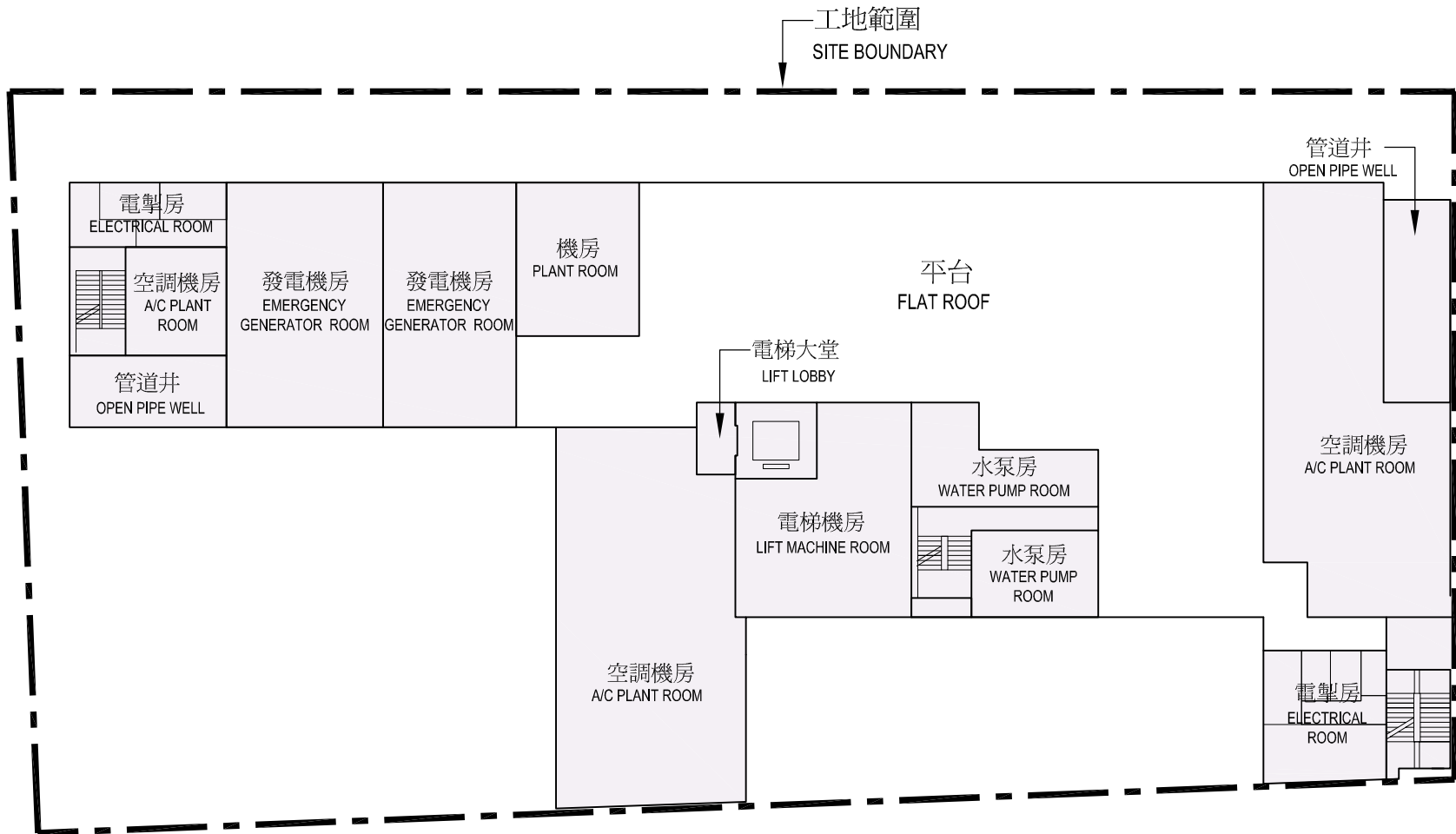
66MM 在天水圍第109區興建一所普通科門診所，一所綜合社區精神健康支援服務中心及一所長期護理院
PROVISION OF A GENERAL OUTPATIENT CLINIC, AN INTEGRATED COMMUNITY MENTAL HEALTH SUPPORT SERVICES CENTRE AND A LONG STAY CARE HOME IN TIN SHUI WAI AREA 109

drawn by 繪圖	KUZO TANG	date 日期	06/10
approved 覆核	BEN YEUNG	date 日期	06/10

drawing no. 編號	AB/7229/XA10
----------------	--------------

scale 比例	1 : 300
office 辦事處	工程策劃管理處 PROJECT MANAGEMENT BRANCH

	ARCHITECTURAL SERVICES
	DEPARTMENT 建築署



天台平面圖
ROOF PLAN

66MM 在天水圍第109區興建一所普通科門診診所，
一所綜合社區精神健康支援服務中心及一所長期護理院
PROVISION OF A GENERAL OUTPATIENT CLINIC, AN INTEGRATED COMMUNITY MENTAL HEALTH
SUPPORT SERVICES CENTRE AND A LONG STAY CARE HOME IN TIN SHUI WAI AREA 109

drawn by 繪圖 KUZU TANG
date 日期 06/10
approved 覆核 BEN YEUNG
date 日期 06/10

drawing no. 編號 AB/7229/XA11
date 日期 06/10

scale 比例 1 : 300
office 辦事處 工程策劃管理處
PROJECT MANAGEMENT BRANCH

ARCHITECTURAL SERVICES DEPARTMENT 建築署