

**For discussion
on 10 December 2007**

Legislative Council Panel on Education

**Development of Human Research Institute - phase 1
by The University of Hong Kong**

PURPOSE

This paper briefs Members on a capital works proposal for the University of Hong Kong (HKU) to develop a Human Research Institute at Sassoon Road, Pokfulam.

JUSTIFICATION

2. At present, HKU's research facilities on human research are scattered around various sites of the University campus. This is not conducive to the further development of human research and close collaboration among the disciplines/units concerned. HKU therefore proposes to develop a new Human Research Institute at Sassoon Road, Pokfulam, to provide the necessary space, advanced technologies and facilities to cultivate a multi-disciplinary environment for fundamental human research.

3. The project¹ involves construction of a new 12-storey academic and research block to provide publicly-funded space of some 6 000 m² in net operational floor area (NOFA), mainly to accommodate specialized research laboratories and state-of-art inter-disciplinary and multi-disciplinary centres including Magnetic Resonance Imaging Engineering Centre, Behavioral Sciences and Holistic Health Centre, Institute of Human Performance Research Centre, Clinical Trials Centre, Genome Research Centre, Medical Physical Research Centre and Chemical Biological Centre, etc. With these laboratories and centres, a full range of fundamental human research activities such as basic research, evidence-based clinical trials, clinical application of research findings, etc. to contribute to disease management and health maintenance will be

¹ Phase I of the Human Research Institute project involves construction of a 12-storey academic and research block. Phase 2 of the project is under planning by HKU.

carried out. The proposed Human Research Institute will also partially relieve HKU's existing space shortfall which is about 35 000 m² in NOFA (i.e. about 18% of its space requirement) in accordance with the results of the review on space and accommodation requirements of the University Grants Committee-funded institutions carried out by the UGC in 2006.

4. Given that the site in question is adjacent to Queen Mary Hospital, HKU's Faculty of Medicine, and a group of supportive hospitals and rehabilitation centres (e.g. Duchess of Kent Hospital, Macle hose Medical Rehabilitation Centre), the construction of the Human Research Institute at this site will enhance the complementary roles of the existing research facilities and activities in the vicinity. A copy of the site plan is at Enclosure.

FINANCIAL IMPLICATIONS

5. The estimated cost for the project is \$266.4 million in money-of-the-day (MOD) prices. HKU has undertaken to contribute 50% of the project cost through its private sources of funding, thus government subvention to the project will be capped at 50% of the project cost (i.e. about \$133.2 million in MOD prices). The proposal will have no impact on tuition fees. Additional recurrent costs associated with this project will be absorbed by HKU.

IMPLEMENTATION TIMETABLE

6. Subject to Members' views, we intend to seek the approval of the Public Works Sub-committee and the Finance Committee of the Legislative Council for the proposal on 9 January 2008 and 1 February 2008 respectively. Subject to funding approval of the Finance Committee, HKU plans to start the construction works in the first quarter of 2008 for completion in the third quarter of 2010.

PUBLIC CONSULTATION

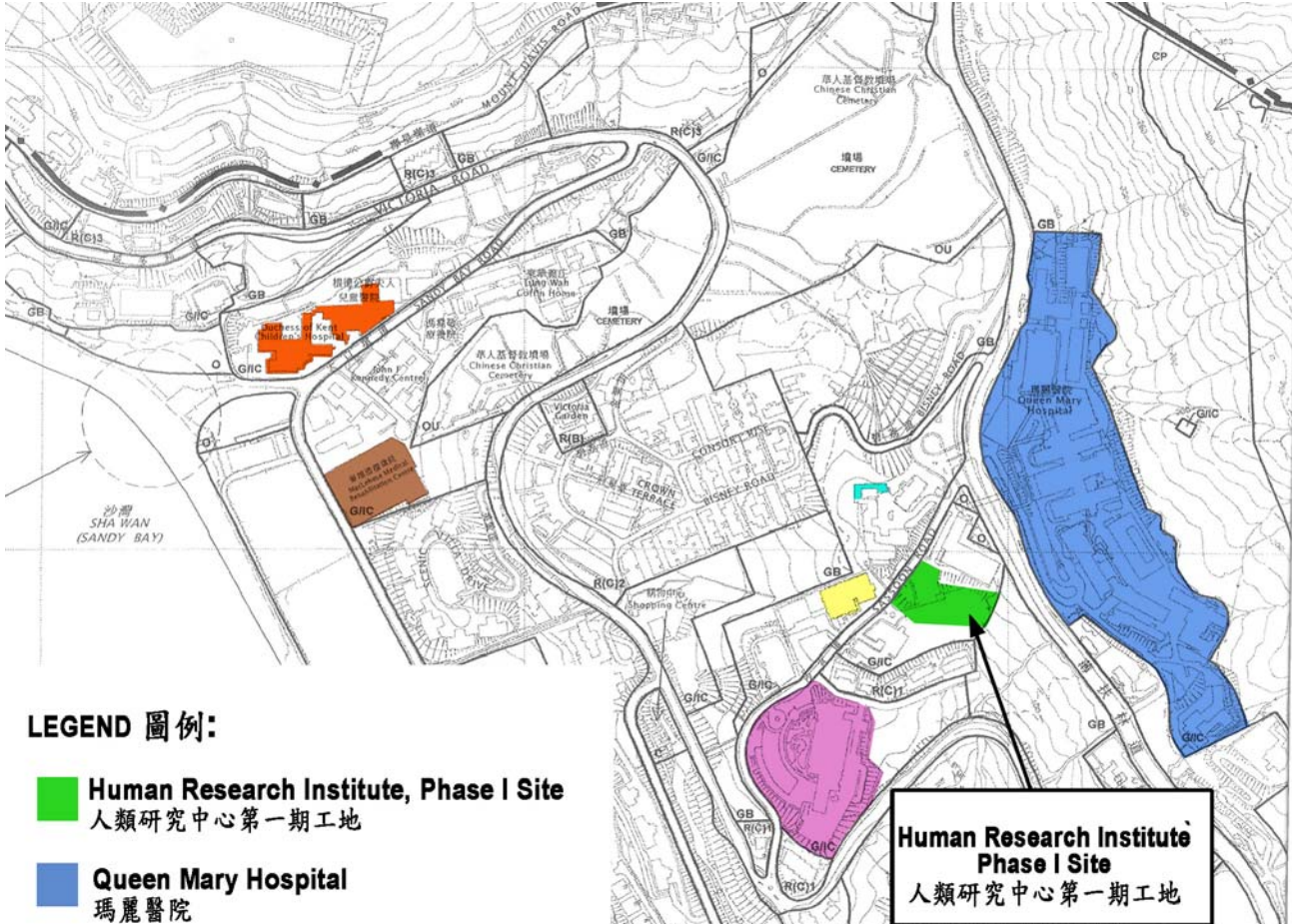
7. The Southern District Council was consulted and supported the project on 28 June 2007.

MEMBERS' VIEWS

8. Members' views are welcome on the proposal.

Education Bureau
December 2007

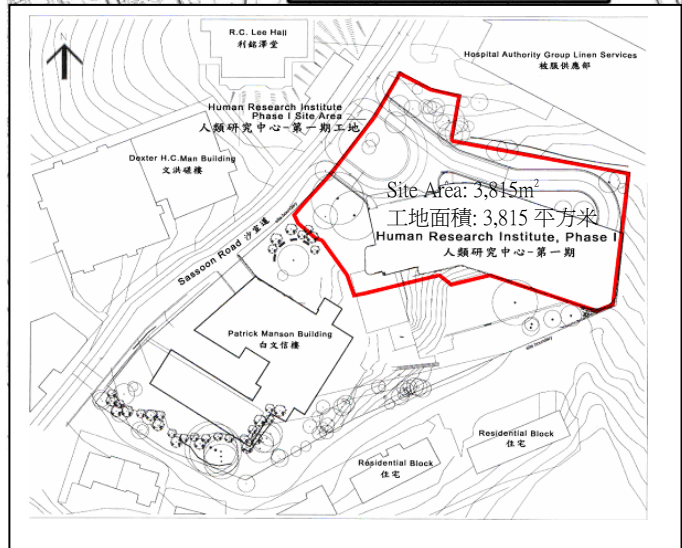
Site plan for Human Research Institute – Phase 1
 The University of Hong Kong
 香港大學人類研究中心第一期位置圖



LEGEND 圖例:

- Human Research Institute, Phase I Site**
人類研究中心第一期工地
- Queen Mary Hospital**
瑪麗醫院
- LKS Faculty of Medicine Building**
港大李嘉誠醫學院
- Duchess of Kent Children's Hospital**
根德公爵夫人兒童醫院
- Macle hose Medical Rehabilitation Centre**
麥理浩復康院
- HKU-Pasteur Research Centre**
香港大學 - 巴斯德研究中心
- Madam S.H. Ho Residence**
何善衡夫人堂

**Human Research Institute
 Phase I Site**
 人類研究中心第一期工地



Human Research Institute - Phase 1
 人類研究中心第一期

Location Map
 位置圖