

For Information

Legislative Council Panel on Home Affairs

Reprovisioning of Pak Tin Public Library, Sham Shui Po

Purpose

The purpose of this paper is to seek Members' support for the proposed reprovisioning of Pak Tin Public Library (the project) in the Sham Shui Po District (SSP District).

Background

2. The existing Pak Tin Public Library (PTPL) has been operated since 1984 and the existing provision has failed to meet the prevailing standard of small libraries. Sham Shui Po District Council (SSPDC) has long been asking for reprovisioning of PTPL, and suggests repeatedly to relocate the library to other rental premises under Housing Authority (HA). HA has now agreed to construct a bare shell of the library, with cost to be reimbursed to them, on the 8/F of the Welfare/Retail Annex Block of the Shek Kip Mei Estate under their Estate

redevelopment programme. The Secretary for Home Affairs has given policy support to the re-provisioning project.

Location of the Project Site

3. The project aims to relocate the existing small library in Pak Tin Estate i.e. PTPL to the project site, with a total area of about 540 m² Net Operational Floor Area (NOFA), which is located on the entire 8/F of the Welfare/Retail Annex Block of the Shek Kip Mei Estate Phase 2 redevelopment under planning by Housing Department (HD). Upon commissioning of the new PTPL, it will replace the existing library located in Pak Tin Estate to provide library services for the residents of Shek Kip Mei including the Pak Tin Area. At the same time, the existing PTPL will be closed upon the opening of the new library. A site plan showing the project site is enclosed at Annex A.

Project Scope

4. The proposed scope of the project comprises –
- (a) a bare shell of the library at 8/F of Welfare/Retail Annex Block under the Shek Kip Mei Estate Phase 2 redevelopment to be constructed by HD; and

(b) fitting out of the bare shell for a public library by Architectural Services Department (ArchSD), which includes :

- (i) an adult library;
- (ii) a children's library;
- (iii) a newspapers and periodicals section;
- (iv) an extension activities room;
- (v) a customer service counter;
- (vi) a book display area;
- (vii) book drops and book processing room;
- (viii) a book sorting area;
- (ix) a computer equipment room; and
- (x) other ancillary facilities including offices, stores, public toilets, staff toilets, staff changing rooms, plant rooms, etc.

5. A preliminary conceptual layout plan for the library is attached at Annex B.

Justifications

6. Currently, the SSP District has a population of about 371 900, which is expected to increase by about 13% to 420 400 in 2016. The district is presently served by two district libraries including Lai Chi Kok Public Library and Po On Road Public Library, two small libraries including the existing PTPL and Un Chau Street Public Library, and three mobile library service points located at Fu Cheong Estate, Tai Hang Tung Estate and Hoi Lai Estate.

7. Shek Kip Mei including Pak Tin area at Sham Shui Po is currently served by a small library at Pak Tin Estate, with an NOFA of only about 129m² which is far beyond the standard space requirement for a small library of 500m². Moreover, the existing PTPL was opened in 1984 and its present set up is unable to meet the heavy demand on public library service from the local community.

8. Constrained by its small area, the PTPL can offer only a limited range of library facilities to the public. Considering the increasing demand in library service to provide more library materials and to cope with the wider use of information technologies to support the infrastructure and operation of the library, there is an increased demand

for larger floor area to accommodate the facilities.

9. The proposed site is in closer proximity to mass public transport and is considered a more ideal location to serve a larger community with surrounding public housing estates and schools, which include Shek Kip Mei Estate, Tai Hang Sai Estate, Pak Tin Estate as well as CCC Ming Yin College, St. Francis of Assisi's English Primary School, St. Francis of Assisi's Caritas School and Holy Trinity College.

10. Alternatives to explore suitable rental premises to relocate the existing PTPL in nearby areas were exhausted but unsuccessful. To better meet the increasing demand at Shek Kip Mei including Pak Tin, Tai Hang Sai and Nam Shan areas, there is an imminent need to re-provision the existing small library to a larger and more centrally located site in the Annex Block of the Shek Kip Mei Estate which would benefit the local residents with better library service.

Project Estimate and Implementation Plan

11. The project is now in Category B of Public Works Programme. The estimated project cost including construction of a bare shell of the library and its fitting-out is \$29.6 million in September 2007 prices.

12. Subject to funding approval by the Finance Committee, the construction of the bare shell of the library, which is part and parcel of the Shek Kip Mei Estate Phase 2 redevelopment to be undertaken by HD, is expected to commence in June 2008 for completion in early 2012. Thereafter, Architecture Services Department will take over the completed bare shell of the library for fitting out works and building services installations, which are expected to complete by early 2013.

Public Consultation

13. We consulted the Community Affairs Committee of SSPDC on the proposed scope for the project on 31 May 2007 with supplementary information paper circulated to members in July 2007. Members endorsed the project and urged for its early implementation.

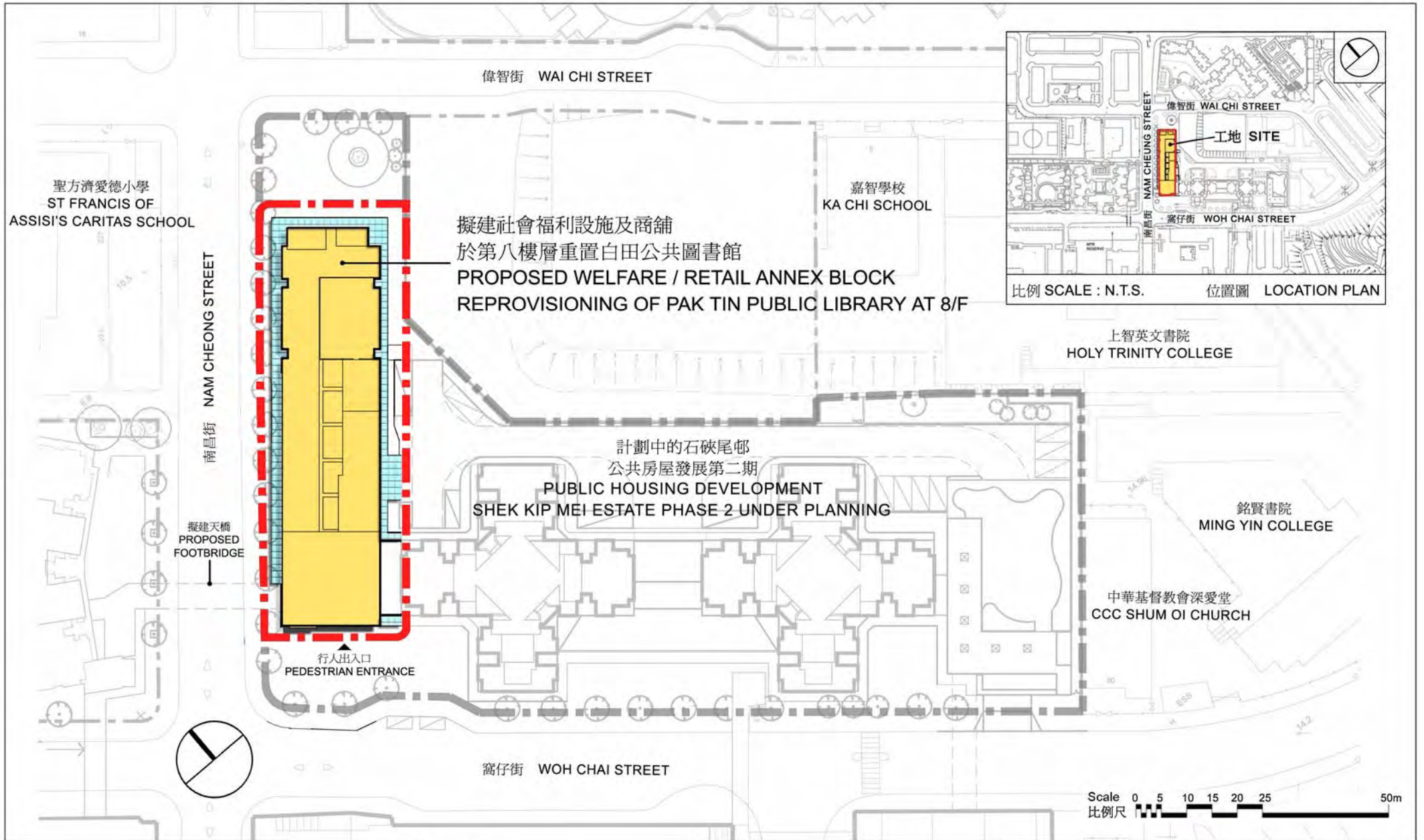
Way Forward

14. To take the project forward, we intend to submit the project to the Public Works Subcommittee of the Finance Committee at its meeting on 23 April 2008.

Advice Sought

15. Members are invited to support the implementation of the project.

Home Affairs Bureau
February 2008



title 058RE - Reprovisioning of
Pak Tin Public Library
重置白田公共圖書館

drawn by
C.K. CHAU

date
21/02/08

drawing no.
AB/7281/XA101

scale
1:1000

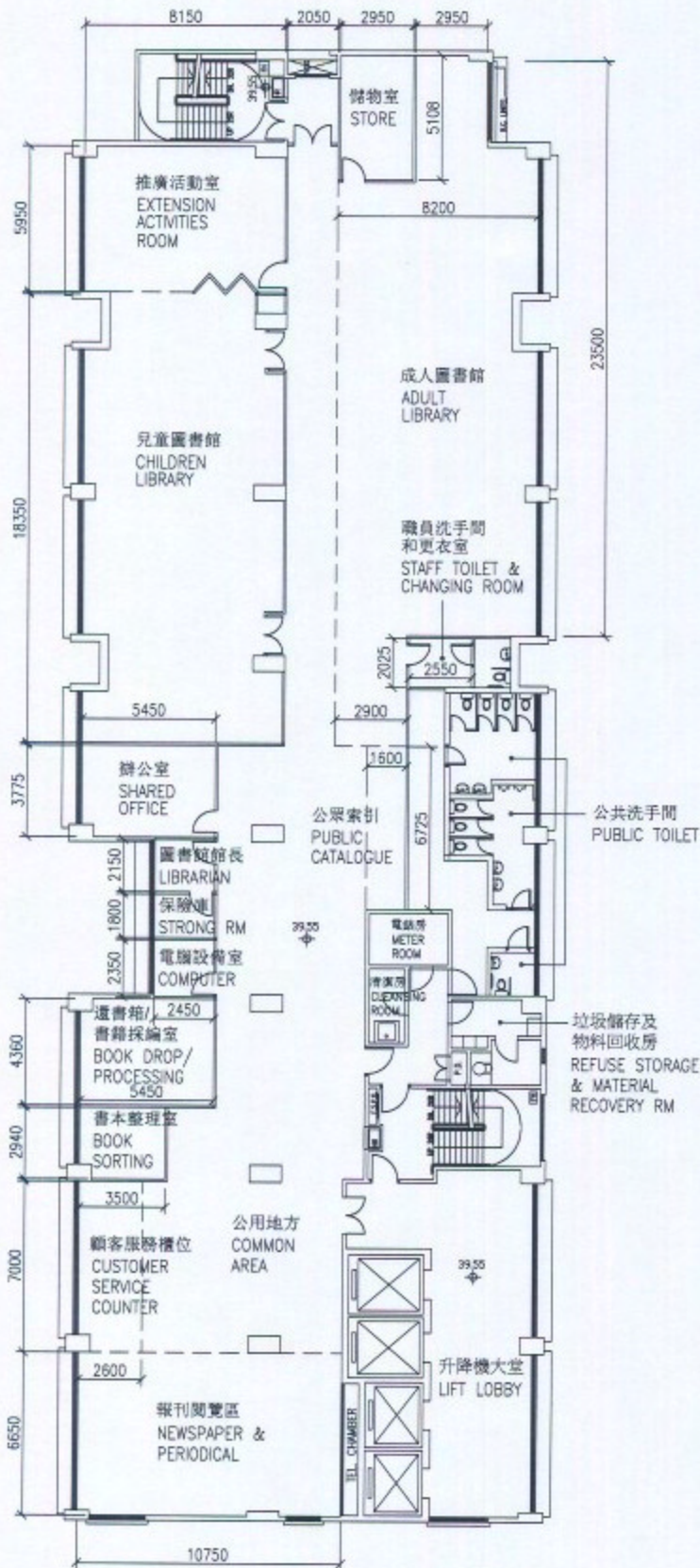
approved
C.M. LAI

date
21/02/08

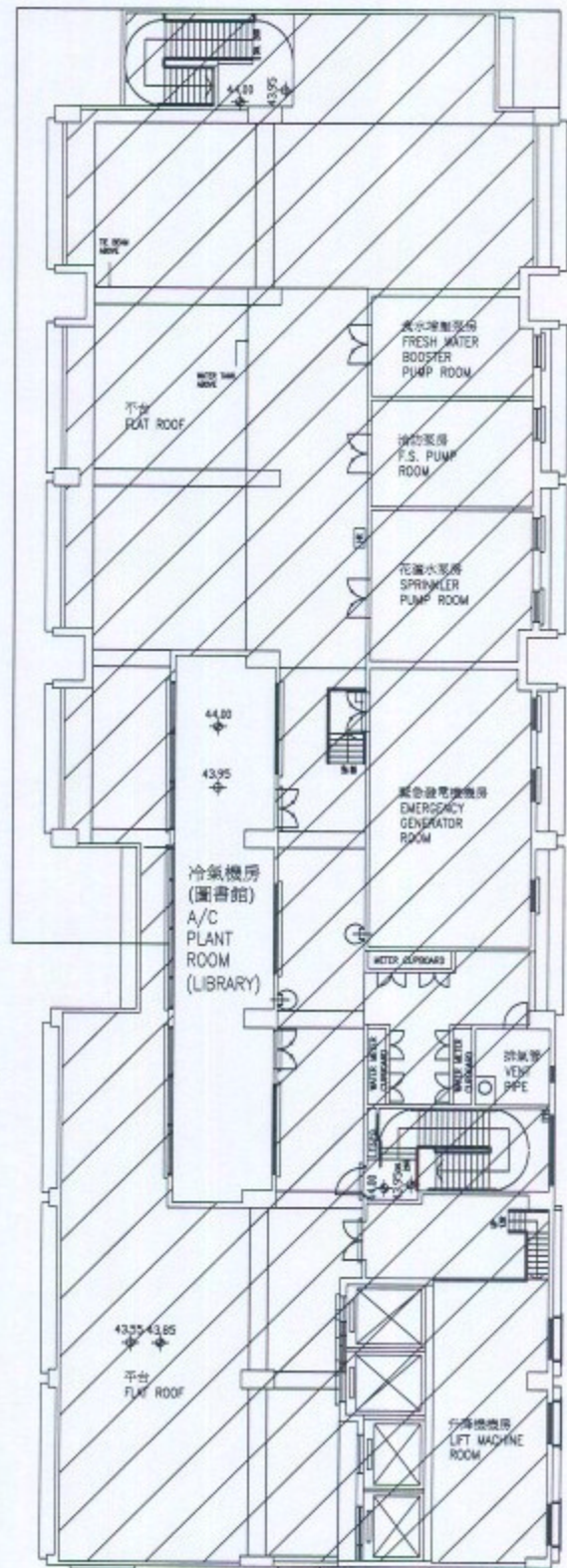
office
PROJECT MANAGEMENT BRANCH



ARCHITECTURAL
SERVICES
DEPARTMENT
建築署



八樓平面圖
F8 PLAN



天台平面圖
ROOF PLAN

title 八樓平面圖 F8 PLAN
天台平面圖 ROOF PLAN

drawn by
A. SZE

date
SEPT07

drawing no.
AB/7281/XA001

scale
1:300

重置白田公共圖書館
REPROVISIONING OF
PAK TIN PUBLIC LIBRARY

approved
A. SUEN

date
SEPT07

office
PROJECT MANAGEMENT BRANCH 3



ARCHITECTURAL
SERVICES
DEPARTMENT