

**The Land Registry Monthly Press Release  
Figures on Agreements for Sale and Purchase  
and Statistical Tables on Instruments  
Received for Registration in October 2007**

The total number of sale and purchase agreements for all types of building units received for registration in the Land Registry in October 2007 was 13,227. This was an increase of 26.3% over September 2007 and 75.1% compared with October 2006. Using a 12-month moving average, the figure for October 2007 represented an increase of 4.6% over September 2007 and 35.2% compared with October 2006. The total consideration of these agreements in the month was \$50.7 billion, up 52.5% over September 2007 and 133.2% compared with the amount for October 2006.

Among the 13,227 sale and purchase agreements, 11,271 were sale and purchase agreements for residential units. This was an increase of 28.8% over September 2007 and 77.9% compared with October 2006. The total consideration of these agreements in the month was \$43.8 billion, up 81.9% over September 2007 and 141.5% compared with the amount for October 2006. Sales of residential units refer to the sale and purchase agreements with payment of stamp duty. These statistics do not include sales of units under the Home Ownership Scheme, the Private Sector Participation Scheme and the Tenants Purchase Scheme except those after payment of premium.

The figures are contained in the monthly statistics released today by the Land Registry on deeds relating to property transactions received for registration in the Land Registry in October 2007.

Relevant statistics for September 2007 and October 2006 are provided for comparison. Figures on sale and purchase agreements received for the past 12 months, the year-on-year rate of change and breakdown figures on residential sales are also released.

As deeds may not be lodged with the Land Registry until up to 30 days after the transaction, these statistics generally relate to land transactions in the previous month.

**THE LAND REGISTRY**  
 Consolidated Monthly Statistics in respect of deeds received  
for registration in the Land Registry

**Table 1**

Month : October 2007

Item	Nature of Deeds	Number of Deeds received for registration			Consideration (nearest \$ million)		
		Urban	New Territories	Total	Urban	New Territories	Total
1.	Agreements for Sale and Purchase of Building Units	7,102 ( 8,239 )	6,125 ( 6,599 )	13,227 ( 14,838 )	37,067	13,611	50,678
2.	Agreements for Sale and Purchase of Land	18	182	200	1,266	891	2,157
	Sub-total (1) + (2)	7,120	6,307	13,427	38,333	14,502	52,835
3.	Assignments of Building Units	7,353 ( 8,313 )	6,465 ( 6,831 )	13,818 ( 15,144 )	28,052	15,635	43,687
4.	Assignments of Land	26	485	511	2,103	1,003	3,106
	Sub-total (3) + (4)	7,379	6,950	14,329	30,155	16,638	46,793
5.	Building Mortgages/Building Legal Charges	0	12	12			
6.	Other Mortgages/Legal Charges	6,323	5,725	12,048			
	Sub-total (5) + (6)	6,323	5,737	12,060			
7.	Receipts/Discharges/Releases	6,352	6,447	12,799			
8.	Leases/Tenancy Agreements	288	178	466			
9.	Exclusion Orders	0	0	0			
10.	Others	6,422	4,437	10,859			
	<b>Total</b>	<b>33,884</b>	<b>30,056</b>	<b>63,940</b>			

Note : Figures in brackets denote the number of units involved.

**THE LAND REGISTRY**  
**Comparison of Monthly Statistics**

**Table 2**

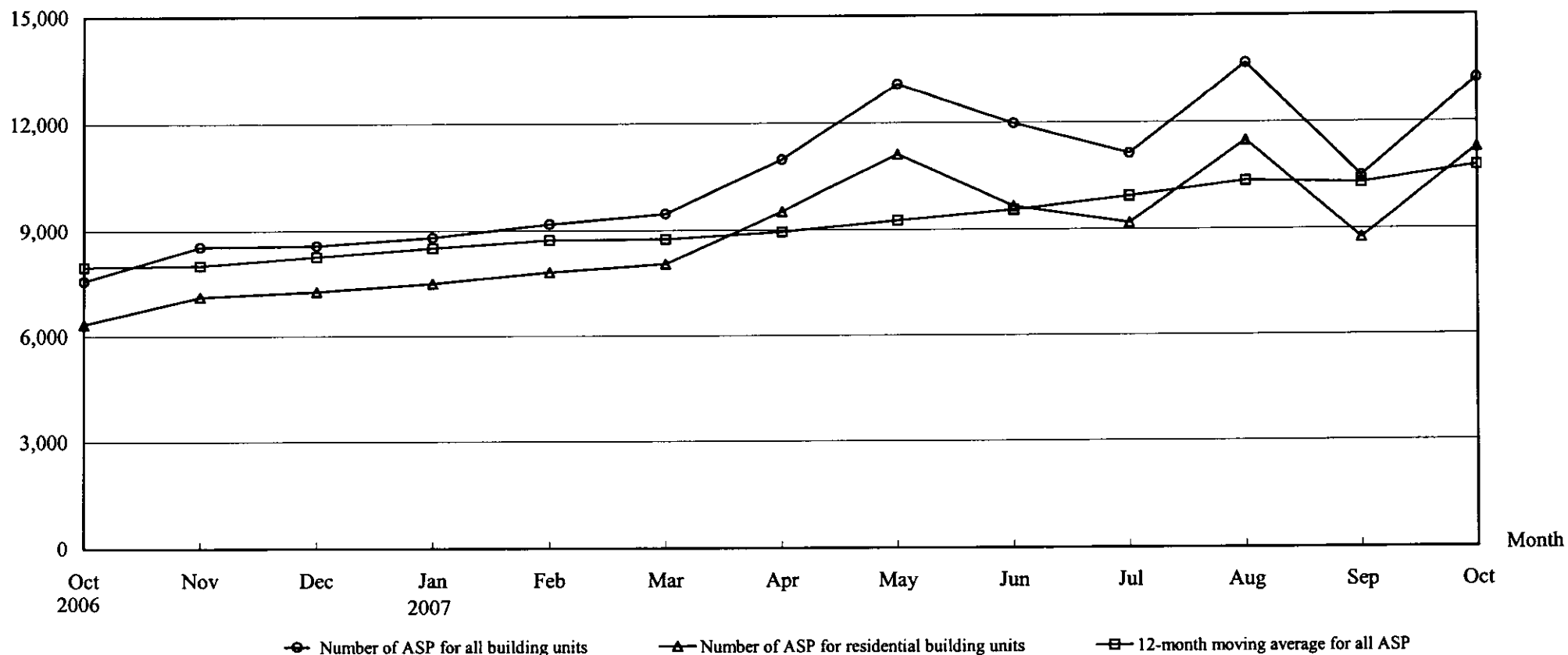
Month : October 2007

Item	2007 October	2007 September	2006 October	October 2007 Increase (+) or Decrease (-) as compared with				
				September 2007		October 2006		
				No. or Consideration	Percentage	No. or Consideration	Percentage	
<b>1. Agreements for Sale and Purchase of Building Units</b>								
(a) No.	13,227	10,475	7,554	+ 2,752	+ 26.3	+ 5,673	+ 75.1	
(b) Consideration	50,678	33,238	21,734	+ 17,440	+ 52.5	+ 28,944	+ 133.2	
<b>2. Agreements for Sale and Purchase of Land</b>								
(a) No.	200	161	140	+ 39	+ 24.2	+ 60	+ 42.9	
(b) Consideration	2,157	1,574	2,720	+ 583	+ 37.0	- 563	- 20.7	
<b>Sub-total of (1) + (2)</b>								
(a) No.	13,427	10,636	7,694	+ 2,791	+ 26.2	+ 5,733	+ 74.5	
(b) Consideration	52,835	34,812	24,454	+ 18,023	+ 51.8	+ 28,381	+ 116.1	
<b>3. Assignments of Building Units</b>								
(a) No.	13,818	13,182	9,622	+ 636	+ 4.8	+ 4,196	+ 43.6	
(b) Consideration	43,687	46,700	23,411	- 3,013	- 6.5	+ 20,276	+ 86.6	
<b>4. Assignments of Land</b>								
(a) No.	511	513	472	- 2	- 0.4	+ 39	+ 8.3	
(b) Consideration	3,106	2,465	4,508	+ 641	+ 26.0	- 1,402	- 31.1	
<b>Sub-total of (3) + (4)</b>								
(a) No.	14,329	13,695	10,094	+ 634	+ 4.6	+ 4,235	+ 42.0	
(b) Consideration	46,793	49,165	27,919	- 2,372	- 4.8	+ 18,874	+ 67.6	
<b>5. No. of Building Mortgages/Building Legal Charges</b>	12	0	17	N.A.	N.A.	- 5	- 29.4	
<b>6. No. of Other Mortgages/Legal Charges</b>	12,048	11,320	7,918	+ 728	+ 6.4	+ 4,130	+ 52.2	
<b>Sub-total of (5) + (6)</b>	12,060	11,320	7,935	+ 740	+ 6.5	+ 4,125	+ 52.0	
<b>7. No. of Receipts/Discharges/Releases</b>	12,799	11,710	9,849	+ 1,089	+ 9.3	+ 2,950	+ 30.0	

Note : Consideration rounded to the nearest million Hong Kong dollars.

**The Land Registry**  
**Chart showing the number of Sale and Purchase Agreements of**  
**building units from October 2006 to October 2007**

**Table 3**



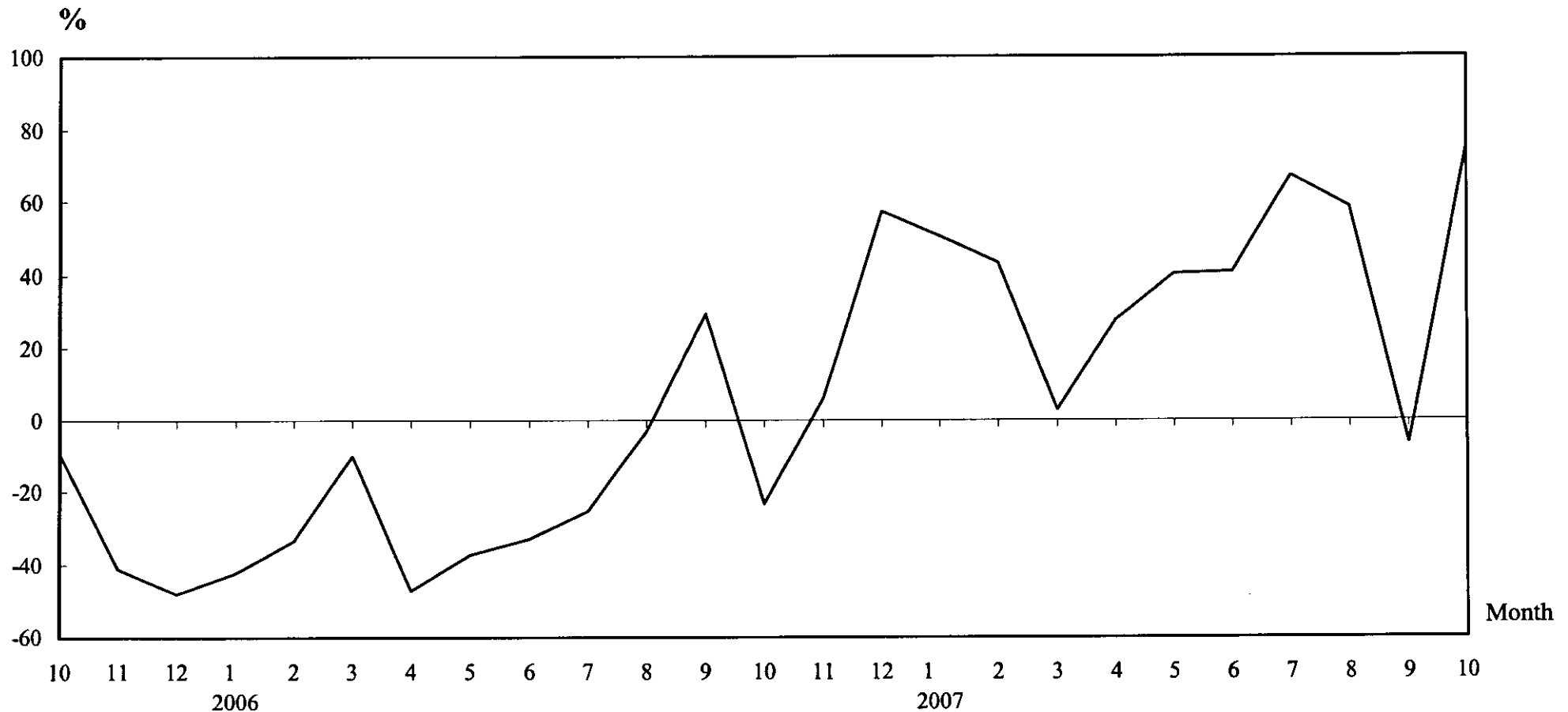
**Number of Sale and Purchase Agreements of building units**

Year	2006			2007									
Month	Oct	Nov	Dec	Jan	Feb	Mar	Apr	May	Jun	Jul	Aug	Sep	Oct
Number of ASP for all building units	7,554	8,539	8,579	8,807	9,188	9,470	10,973	13,090	11,979	11,121	13,664	10,475	13,227
Number of ASP for residential building units	6,335	7,106	7,255	7,485	7,804	8,039	9,530	11,110	9,653	9,188	11,480	8,753	11,271
12-month moving average for all ASP	7,957	7,997	8,257	8,503	8,735	8,756	8,954	9,267	9,557	9,928	10,348	10,287	10,759

Note : Sales of residential units refer to sale and purchase agreements with payment of stamp duty. These statistics do not include sales of units under the Home Ownership Scheme, the Private Sector Participation Scheme and the Tenants Purchase Scheme except those after payment of premium.

**The Land Registry**  
**Year-on-year Rate of Change in the Number of Sale and Purchase Agreements**

**Table 4**



**Number of Sale and Purchase Agreements of residential and non-residential building units**

Year/Month	Jan	Feb	Mar	Apr	May	Jun	Jul	Aug	Sep	Oct	Nov	Dec
2005	10,138	9,631	10,238	16,280	14,853	12,672	8,933	8,907	8,670	9,861	8,058	5,456
2006	5,855	6,413	9,208	8,598	9,332	8,508	6,661	8,634	11,206	7,554	8,539	8,579
2007	8,807	9,188	9,470	10,973	13,090	11,979	11,121	13,664	10,475	13,227		

## THE LAND REGISTRY

### Number of Sale and Purchase Agreements of residential building units and total consideration from October 2006 to October 2007

Year / Month		Range of Consideration ( \$ million )												Total	
		Less than 1		1 to less than 2		2 to less than 3		3 to less than 5		5 to less than 10		10 or over			
		No.	%	No.	%	No.	%	No.	%	No.	%	No.	%	No.	Consideration (\$ million)
2006	10	1,515	24	2,108	33	1,103	17	938	15	468	7	203	3	6,335	18,152
	11	1,885	27	2,525	36	1,080	15	881	12	501	7	234	3	7,106	19,461
	12	1,661	23	2,505	35	1,081	15	962	13	739	10	307	4	7,255	22,370
2007	1	1,791	24	2,631	35	1,284	17	928	12	564	8	287	4	7,485	21,351
	2	1,636	21	2,852	37	1,485	19	1,024	13	504	6	303	4	7,804	22,132
	3	1,700	21	2,995	37	1,343	17	1,049	13	609	8	343	4	8,039	25,191
	4	1,747	18	3,514	37	1,228	13	1,497	16	730	8	814	9	9,530	39,442
	5	2,215	20	4,054	36	1,707	15	1,605	14	918	8	611	5	11,110	38,187
	6	1,819	19	3,543	37	1,632	17	1,483	15	790	8	386	4	9,653	31,680
	7	1,621	18	3,290	36	1,704	19	1,424	15	761	8	388	4	9,188	28,732
	8	1,814	16	4,533	39	2,153	19	1,665	15	836	7	479	4	11,480	36,760
	9	1,224	14	4,276	49	1,437	16	984	11	568	6	264	3	8,753	24,101
	10	1,649	15	3,988	35	2,094	19	1,725	15	1,135	10	680	6	11,271	43,830

Note : Figures in percentage for individual items may not add up to 100% due to rounding.

**THE LAND REGISTRY**

Monthly Statistics in respect of Sale & Purchase Agreements  
of building units received for registration on regional basis

Month: October 2007

Item	District	Sale and Purchase Agreements of Building Units	
		No. of Transactions	Consideration (nearest \$million)
1.	Hong Kong	3,247	21,378
2.	Kowloon	3,855	15,689
3.	Islands	456	1,921
4.	North	618	1,156
5.	Sai Kung	754	2,019
6.	Shatin	884	2,017
7.	Tai Po	446	886
8.	Tsuen Wan	1,346	2,962
9.	Tuen Mun	689	1,003
10.	Yuen Long	932	1,647
	<b>Total</b>	13,227	50,678