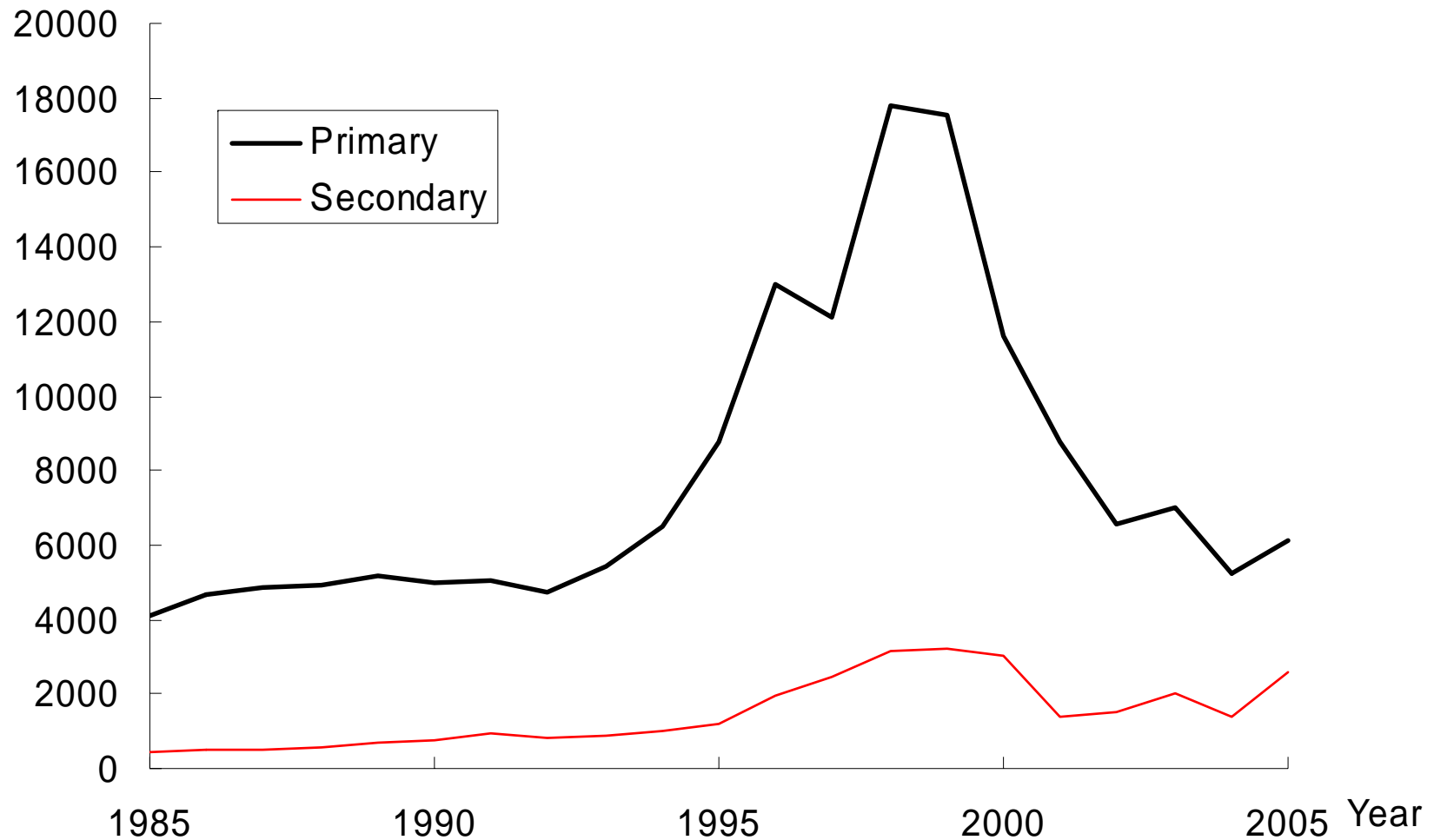


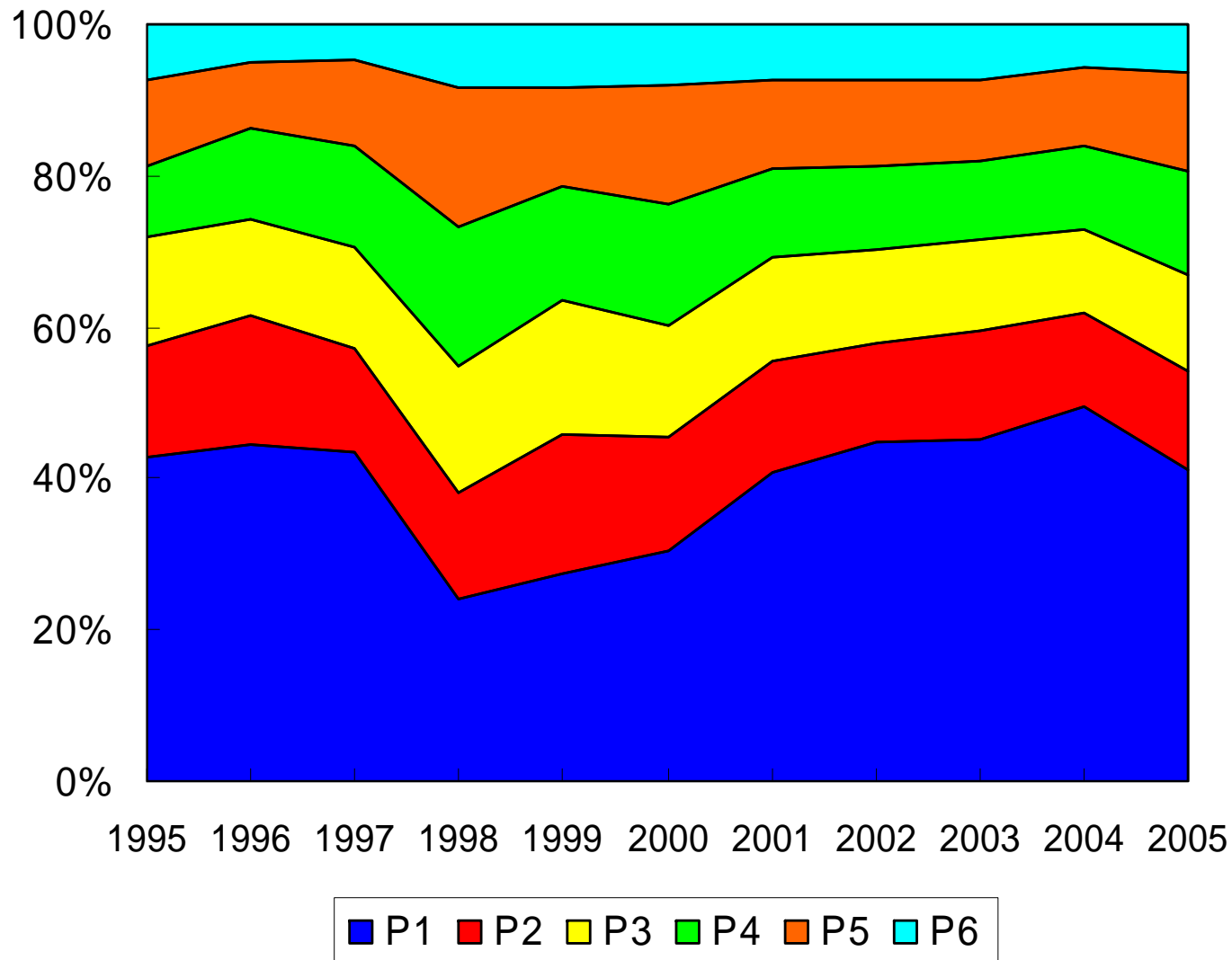
One way Permit scheme and Mainland-HKSAR families by Paul Yip

- School enrollment
- Marriage

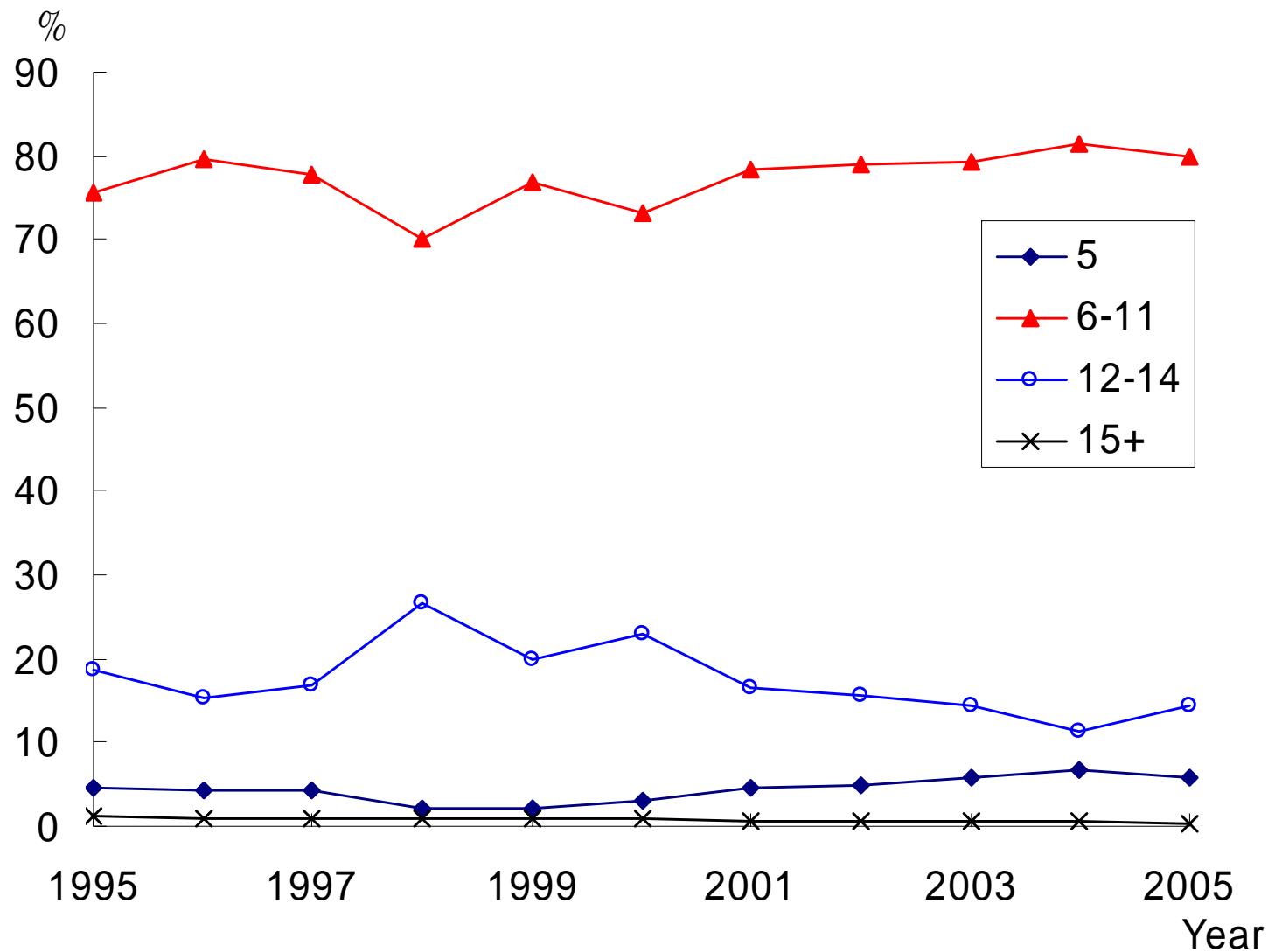
Children from the Mainland Newly Admitted to Primary and Secondary Schools, 1985 - 2005



Percentage distribution of pupils from the Mainland newly admitted to primary schools in Hong Kong by grade of admission, 1995 – 2005



Age distribution of pupils from the Mainland newly admitted to primary schools in Hong Kong, 1995 – 2005



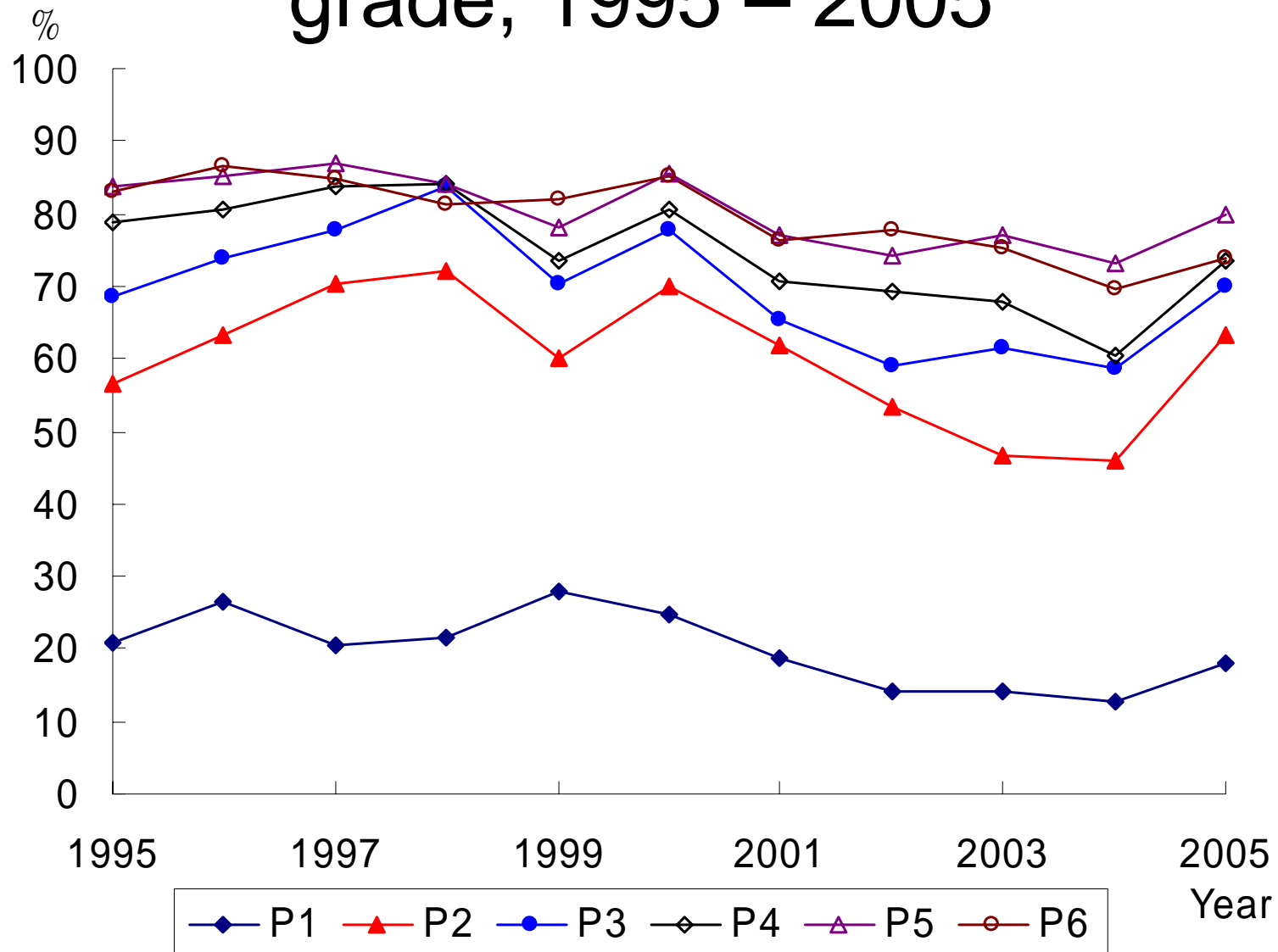
Proportion of over-aged pupils among newly admitted primary pupils from the Mainland by grade, 1995 – 2005

Year	Grade of admission						All grades
	P1	P2	P3	P4	P5	P6	
	(%)	(%)	(%)	(%)	(%)	(%)	(%)
1995	40.2	76.4	87.0	90.2	94.1	95.3	67.1
1996	46.5	83.1	89.3	91.9	94.2	93.4	70.1
1997	42.4	87.9	89.7	91.6	93.3	95.1	69.8
1998	43.8	88.5	94.8	93.7	92.7	92.7	80.9
1999	47.4	82.2	90.0	89.6	92.3	94.0	77.6
2000	40.9	84.5	90.7	92.6	93.7	94.1	75.7
2001	32.7	79.0	81.8	88.2	91.5	93.1	64.1
2002	26.7	67.7	76.5	86.2	90.8	95.1	57.2
2003	26.0	63.1	71.3	83.7	89.2	93.5	54.4
2004	22.3	56.8	68.4	72.9	83.9	87.5	47.4
2005	26.3	70.1	76.8	82.5	88.2	84.5	57.8

Newly admitted pupils from the Mainland in primary Schools by age by grade by age, 2005

Present grade	Age												All ages
	5	6	7	8	9	10	11	12	13	14	15	16+	
P1	354	1510	489	150	23	1	-	-	-	1	-	-	2528
P2	-	37	198	347	173	22	9	-	-	-	-	-	786
P3	-	1	23	158	334	204	56	6	3	1	-	-	786
P4	-	-	1	18	127	335	248	89	14	-	-	-	832
P5	-	-	-	1	19	75	266	308	114	17	3	2	805
P6	-	-	-	-	-	8	52	126	160	33	8	1	388
All grades	354	1548	711	674	676	645	631	529	291	52	11	3	6125

Proportion of new arrival primary pupils from the Mainland being repeaters by grade, 1995 – 2005



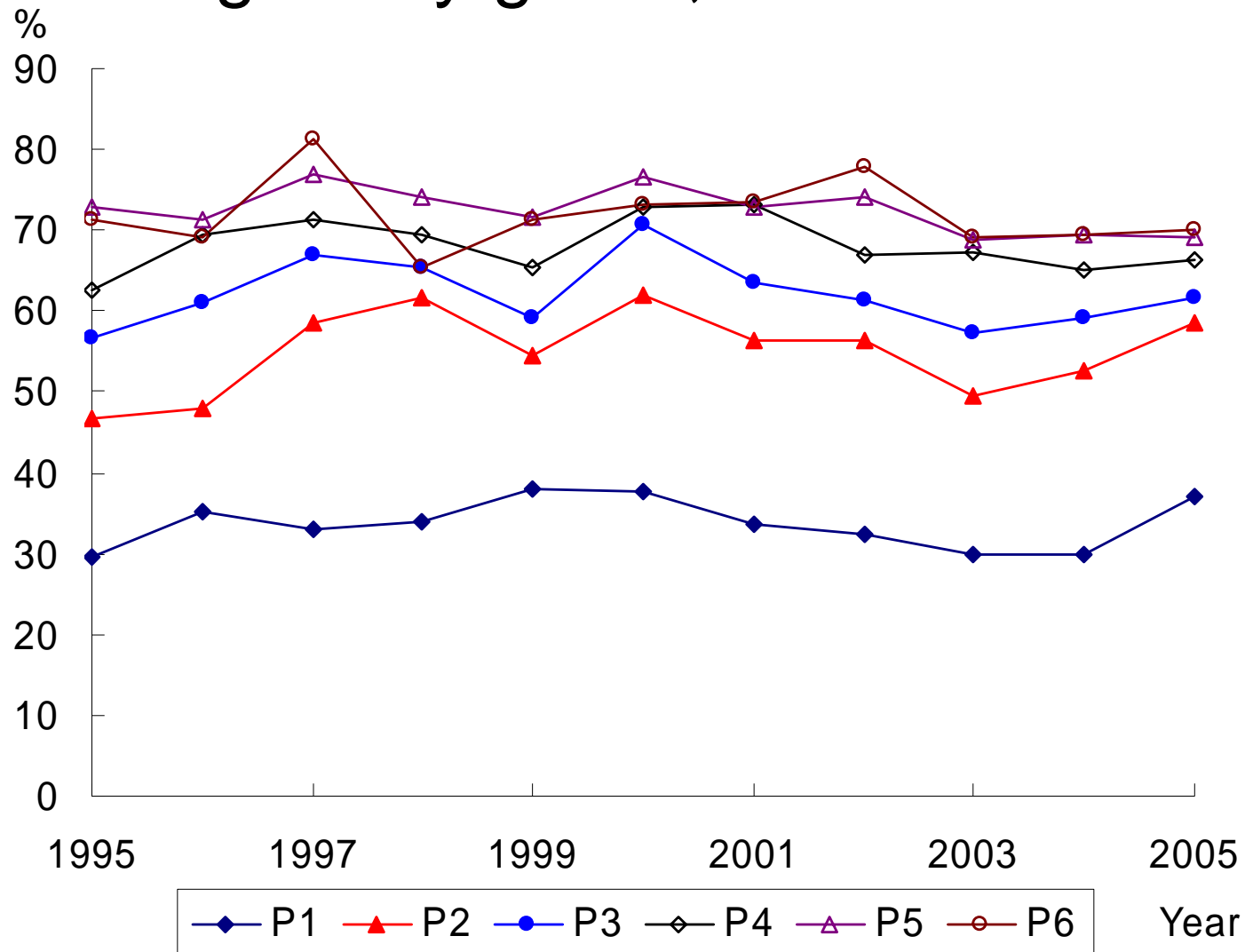
Newly admitted pupils from the Mainland in primary schools by present grade in HK and previous grade attended in the Mainland, 2005

Highest previous grade attended in the Mainland	Present grade in HK					
	P1	P2	P3	P4	P5	P6
Kindergarten 3	2073	-	-	-	-	-
Primary 1	381	289	-	-	-	-
Primary 2	70	403	236	-	-	-
Primary 3	4	88	434	221	-	-
Primary 4	-	6	109	469	162	-
Primary 5	-	-	7	122	429	102
Primary 6	-	-	-	20	197	240
Secondary 1	-	-	-	-	15	41
Secondary 2	-	-	-	-	2	4
Secondary 3	-	-	-	-	-	1
Being repeaters	455	497	550	611	643	286
Number of newly admitted pupils	2528	786	786	832	805	388
Proportion of newly admitted pupils being repeaters (%)	18.0	63.2	70.0	73.4	79.9	73.7

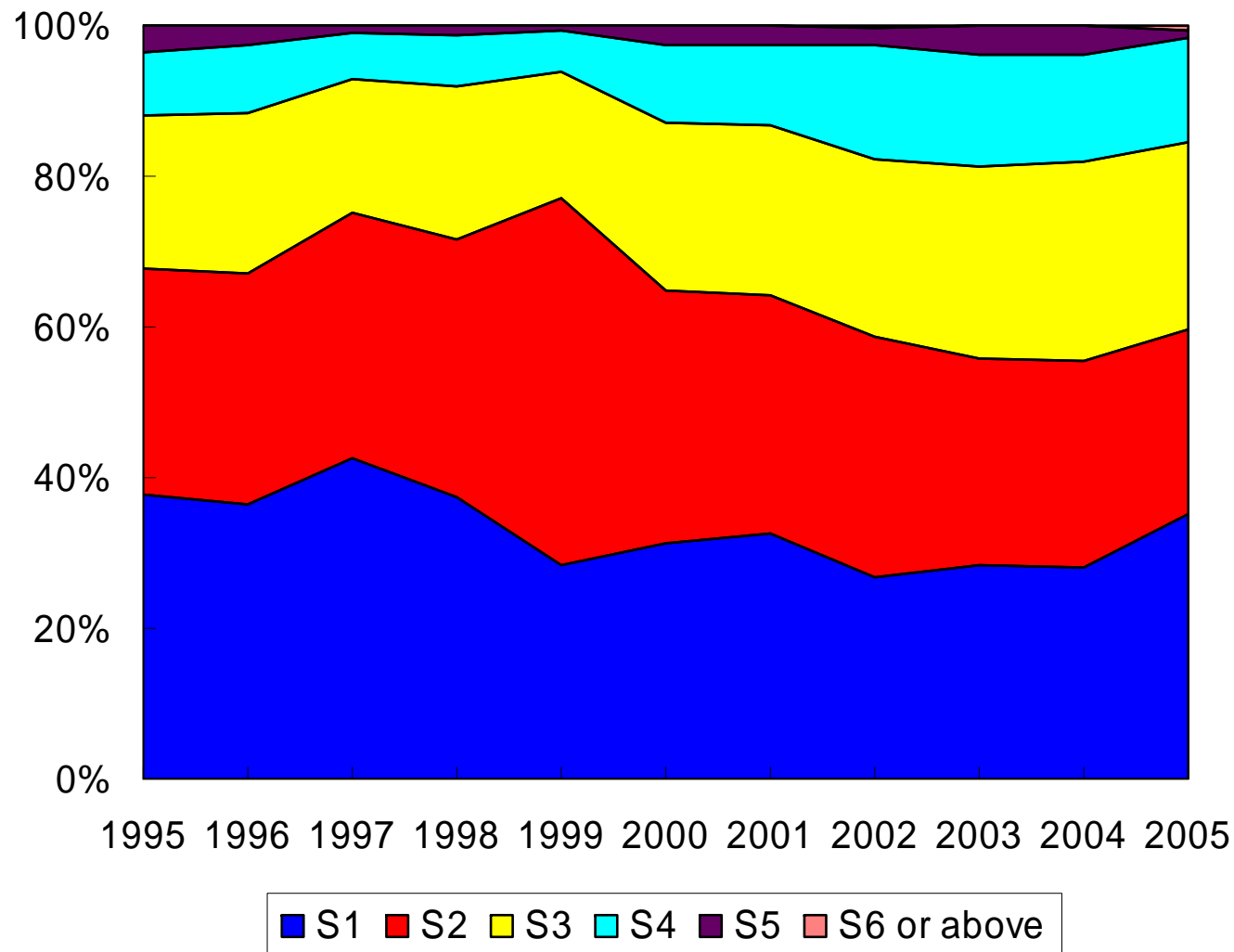
Primary education

6. Academic performance (2005)
 - 53.3% (N=3,265) were weak in English,
 - 17.4% (N=1,066) were weak in Chinese
 - 13.4% (N=821) were weak in Math

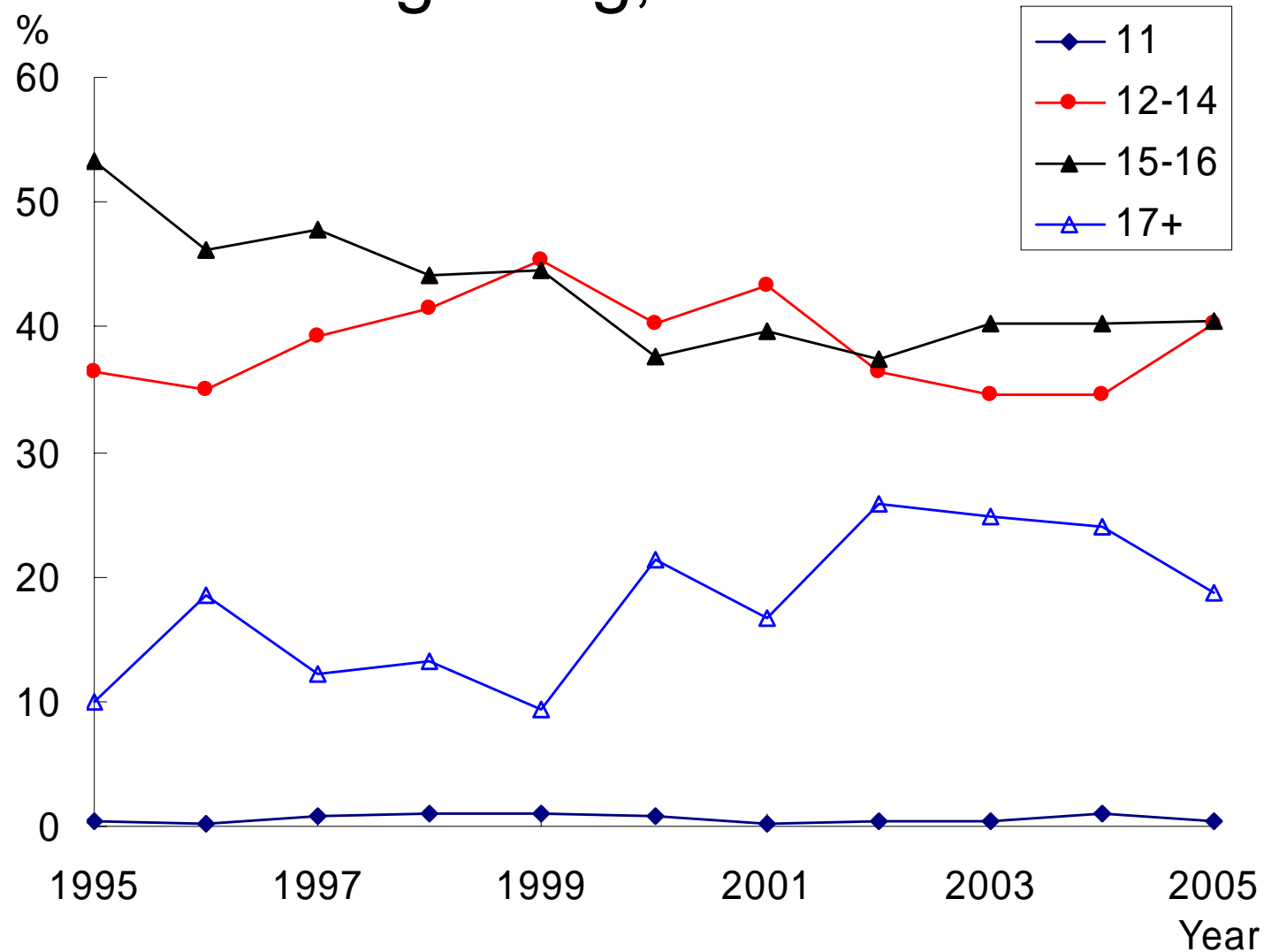
Proportion of pupils from the Mainland newly admitted to primary schools being weak in English by grade, 1995 – 2005



Distribution of pupils from the Mainland newly admitted to secondary schools in Hong Kong by grade, 1995 – 2005



Age distribution of pupils from the Mainland newly admitted to secondary schools in Hong Kong, 1995 – 2005

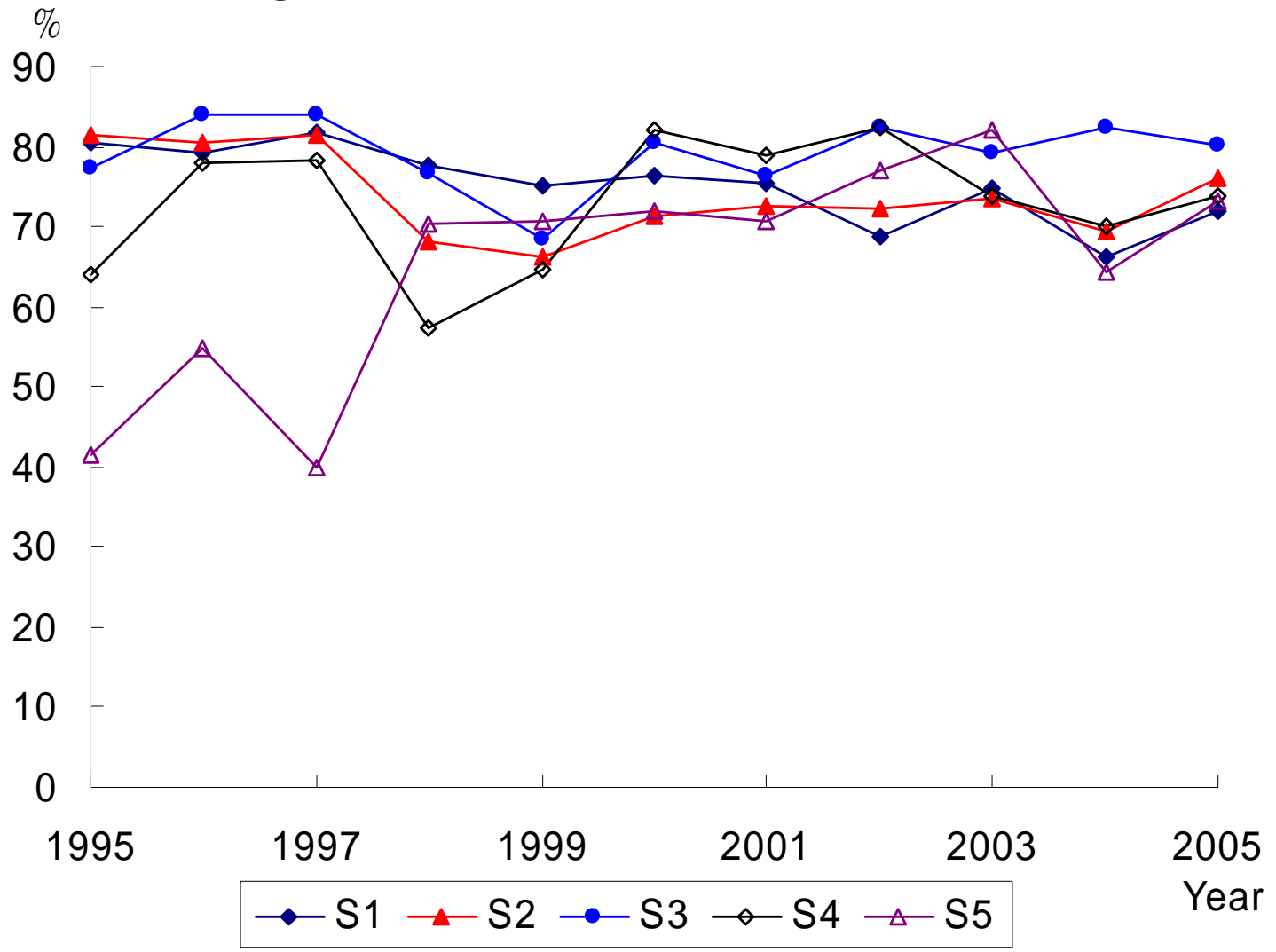


Proportion of over-aged pupils among newly admitted secondary pupils from the Mainland by grade, 1995 – 2005

Year	Grade of admission					All grades
	S1	S2	S3	S4	S5	
	(%)	(%)	(%)	(%)	(%)	(%)
1995	89.9	89.9	85.1	85.1	86.0	87.8
1996	93.8	91.6	92.3	87.6	68.6	91.6
1997	91.1	92.6	93.9	89.5	70.0	91.8
1998	90.7	89.7	88.7	89.7	94.6	89.9
1999	89.8	84.6	79.4	80.0	64.7	84.9
2000	86.6	86.3	89.4	90.6	88.5	87.6
2001	89.9	87.4	87.7	91.1	91.2	88.8
2002	87.4	89.0	89.0	91.4	87.2	88.9
2003	89.7	88.5	92.4	91.3	84.9	90.5
2004	83.6	87.3	91.2	92.2	86.8	88.0
2005	87.4	91.2	90.1	90.1	83.3	89.3

Present grade	Age										2 All ages 1 +	
	11	12	13	14	15	16	17	18	19	20		
S1	8	106	295	306	145	39	6	1	-	-	-	906
S2	-	10	45	208	231	110	21	2	-	-	-	627
S3	2	1	12	48	177	236	116	41	5	1	-	639
S4	-	1	-	5	29	67	131	92	29	1	-	355
S5	-	-	-	-	-	5	8	11	4	2	-	30
S6	-	-	-	-	-	-	-	6	1	1	-	8
S7	-	-	-	-	-	1	-	1	2	-	1	5
All grades	10	118	352	567	582	458	282	154	41	5	1	2570

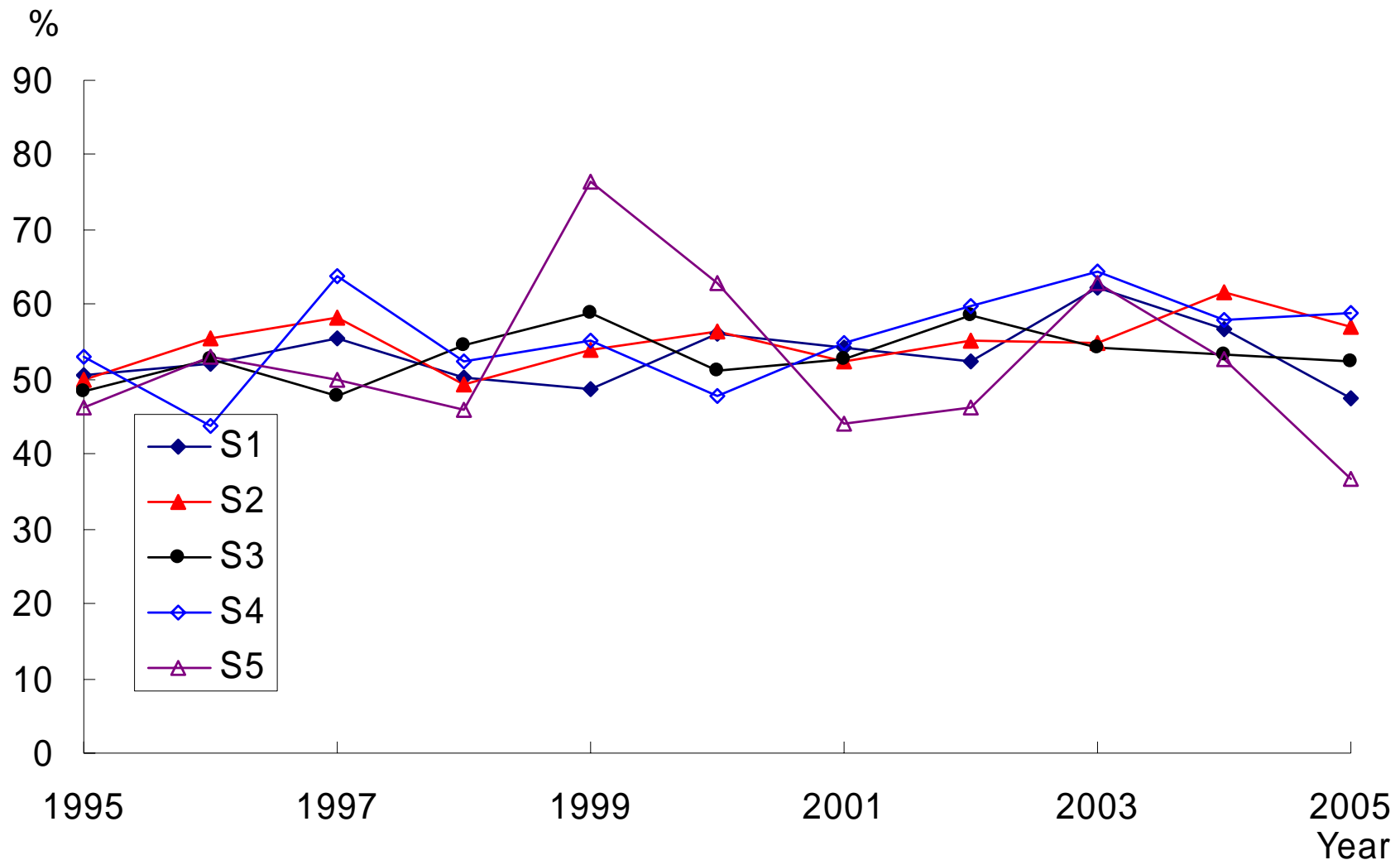
Proportion of newly admitted secondary pupils from the Mainland being repeaters by grade, 1995 – 2005



Newly admitted pupils from the Mainland in secondary schools by present grade in HK and previous grade attended in the Mainland, 2005

Highest previous grade attended in the Mainland	Present grade in HK						
	S1	S2	S3	S4	S5	S6	S7
Primary 6	255						
Secondary 1	440	150	-	-	-	-	-
Secondary 2	167	343	127	-	-	-	-
Secondary 3	39	123	356	93	-	-	-
Secondary 4	5	9	115	132	8	-	-
Secondary 5	-	2	34	97	12	-	-
Secondary 6 or above	-	-	7	33	10	8	5
Being repeaters	651	477	512	262	22	8	0
Number of newly admitted pupils	906	627	639	355	30	8	5
Proportion of newly admitted pupils being repeaters (%)	72	76	80	74	73	100	0

Distribution of pupils from the Mainland newly admitted to secondary schools being weak in English by grade, 1995 – 2005



Academic performance (cont')

- In 2005,
 - 52.4% (N=1,347) were weak in English,
 - 14.4% (N=370) were weak in Chinese
 - 11.6% (N=298) were weak in Math.
- Among those who were weak in English, their assessed standard of English was substantially lower.
- In 2005, 58.9% (N=209) of all newly admitted pupils from the Mainland in S4 were weak in English
- 9.9% (N=35) were assessed to have a standard in English at Secondary 1 level or below.

二零零一年至二零零六年內地女性在香港生產的嬰兒數目 Births born in Hong Kong to Mainland women, 2001–

2007

統計期間 Reference period	活產嬰兒數目 ⁽¹⁾ Number of live births ⁽¹⁾	其中由內地女性在香港所生的活產嬰兒數目： Of which number of live births born in Hong Kong to Mainland women:			
		其配偶為 香港永久性居民 whose spouses are Hong Kong Permanent Residents	其配偶為 非香港永久性居民 ⁽²⁾ whose spouses are not Hong Kong Permanent Residents ⁽²⁾	其他 ⁽³⁾ Others ⁽³⁾	小計 Sub-total
2001	48 219(40409)	7 190	620	-	7 810
2002	48 209(39703)	7 256	1 250	-	8 506
2003	46 965(36837)	7 962	2 070	96	10 128
2004	49 796(36587)	8 896	4 102	211	13 209
2005	57 098(37560)	9 879	9 273	386	19 538
2006	65 626(39494)	9 438	16 044	650	26 132
2007	70 875(43301)	7 989	18 816	769	27 574

註釋：(1) 數字是按事件的發生時間計算某統計期間內在香港出生的活產嬰兒總數(即該統計期間內的活產嬰兒)。

(2) 包括香港非永久性居民(來港少於七年的內地人士包括在這類別)及旅客。

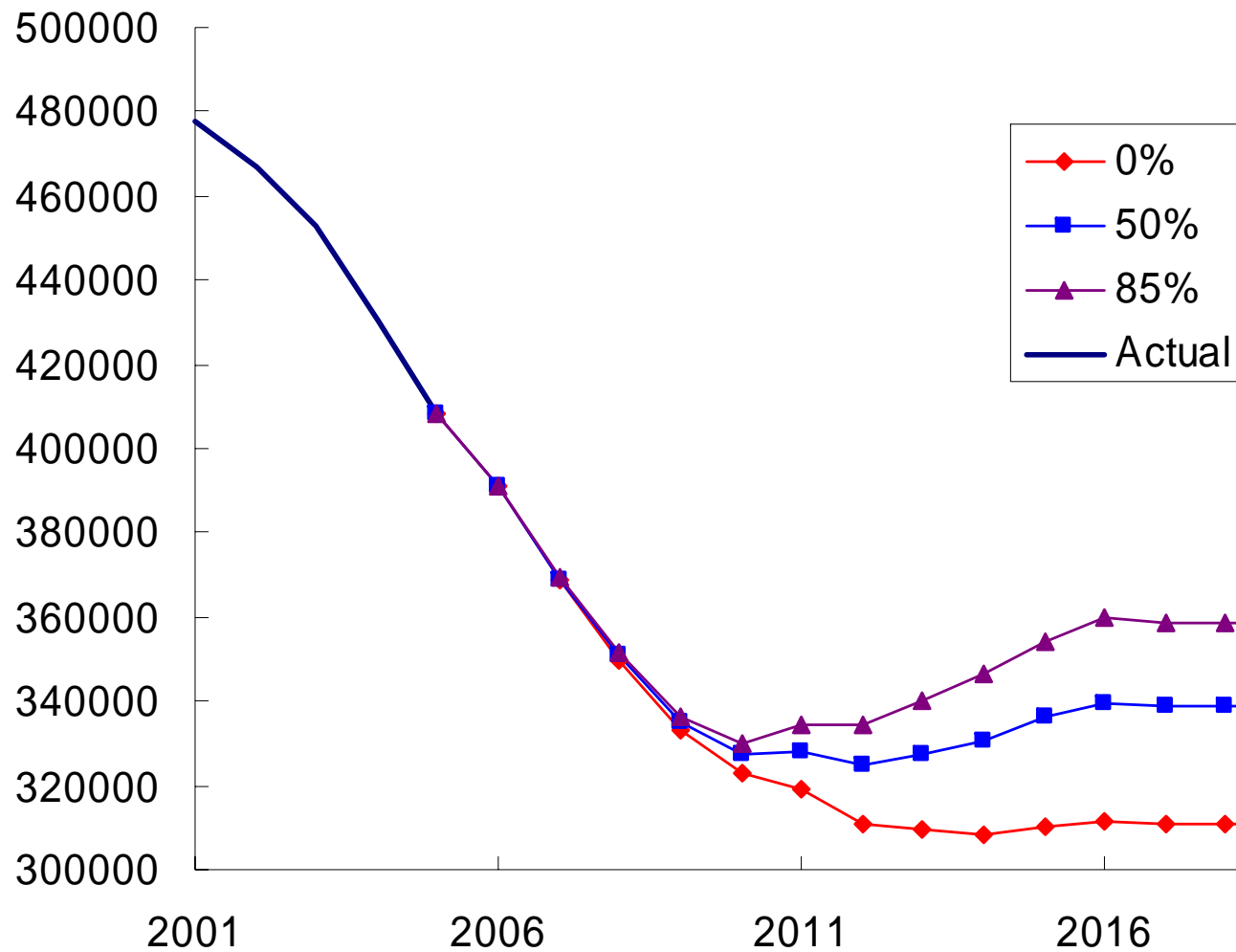
(3) 在出生登記時, 內地母親並沒有提供嬰兒父親居民身分的資料。

Notes: (1) The figures refer to the total number of live births born in Hong Kong in the reference period counted by the occurrence time of the events (i.e. births actually taking place in that reference period).

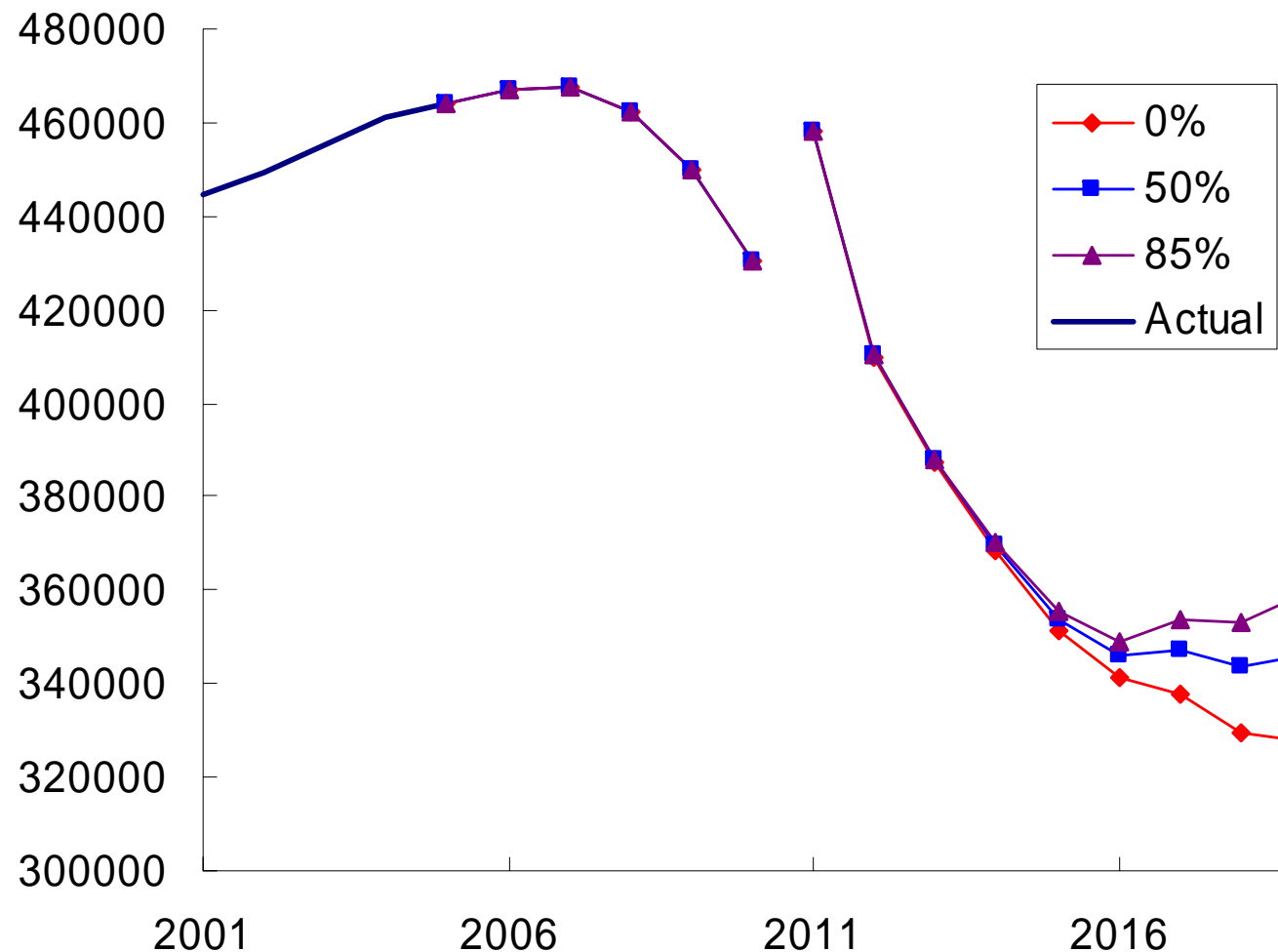
(2) Include Hong Kong Non-permanent Residents (Persons from the Mainland having resided in Hong Kong for less than 7 years being grouped in this category) and visitors.

(3) Mainland mothers chose not to provide the father's residential status during birth registration.

Projected size of student enrolments in local primary schools in Hong Kong by scenario, 2001 – 2019



Projected size of student enrolments in local secondary schools in Hong Kong by scenario, 2001 – 2019



Challenges

- Earlier the better
- English is the primary concern, earlier the better.
- More focused effort should be spent in improving their english skills without making them to repeat.
- They are crucial for our development



我們渴望改變....

