

For information
On 21 May 2009

**Legislative Council Panel on Environmental Affairs
Subcommittee on Combating Fly-tipping**

**Cases of Depositing of
Inert Construction and Demolition Materials on
Private and Government Land**

This paper updates Members on information on cases of depositing of inert construction and demolition (C&D) materials on private and Government land, which took place between 2006 and 2009 (up to end of March).

BACKGROUND

2. At the Subcommittee meeting of this Panel held on 20 April 2009, Members discussed Government measures to address public concerns over the depositing of inert C&D materials on private and Government land. To facilitate further discussions at the next Subcommittee meeting scheduled for 21 May 2009, Members requested the Administration to update the summary tables pertaining to the information paper (LC Paper No. CB(1) 1968/07-08(01)) previously provided by the Administration for the meeting of the Panel on Environment on 30 June 2008; to provide flowcharts on the actions to be taken by Government departments upon receipt of complaints on fly-tipping or land filling activities; and to advise the time required for actions to be taken by the Government departments concerned.

3. The information below is compiled based on the latest information provided by all the concerned Government departments¹.

DEPOSITING OF INERT C&D MATERIALS ON PRIVATE LAND

4. **Annex 1** provides a summary of the number of public complaints and inter-departmental referrals against depositing of inert C&D materials on private land. It shows an increasing trend over the past three years. Table 1 below summarises the number of private land filling cases that have been brought to the attention of the Administration through either public complaints or pro-active inspections by the concerned Government departments during the period

Table 1 Summary of Private Land involving depositing of inert C&D Materials

Year	2006	2007	2008	2009 (Jan – Mar)
No. of Sites				
(i) <0.1 ha	7	24	22	1
(ii) 0.1 to 0.5 ha	16	32	32	0
(iii) 0.5 to 2 ha	6	14	14	4
(iv) >2 ha	0	2	0	1
Total	29	72	68	6
Total Areas (ha)	11.1	26.4	23.4	5.8

5. In response to these land filling sites, concerned Government departments have been taking actions within their respective jurisdictions under existing legislation to stop illegal land filling activities and, where appropriate, require reinstatement of the land by concerned parties. **Table 2** below sets out the Government actions against these activities on private land between 2006 and 2009 (up to end of March).

¹ The concerned Government departments include Environmental Protection Department, Planning Department; Lands Department; Highways Department; Food and Environmental Hygiene Department; Agriculture, Fisheries and Conservation Department; Buildings Department; Drainage Services Department; Civil Engineering and Development Department; and Home Affairs Department.

Table 2 Summary of Actions taken by Government departments (between 2006 and up to end March 2009)

	PlanD				Other departments			
	2006	2007	2008	2009 (Jan to Mar)	2006	2007	2008	2009 (Jan to Mar)
No. of enforcement/ stop notices issued (site)	186 (22)	300 (40)	281 (53)	166 (20)	0	1 (1)	2 (2)	0
No. of re-instatement notices issued (site)	80 (13)	163 (22)	234 (37)	22 (5)	n/a	n/a	n/a	n/a
No. of prosecutions (by summons)	36	27	39	3	1	0	5	0
No. of convictions (by summons)	8	14	16	1	1	0	5	0
Total fines (\$'000)	35	103.4	88.4	20	6	0	40	0
No. of sites re-instated and area (ha)	7 (4.38)	13 (5.65)	26 (11.23)	3 (0.61)	0	1 (0.02)	0	0
No. of sites with unauthorised land/pond filling discontinued and area (ha)	14 (9.38)	37 (10.67)	12 (2.62)	24 (8.49)	1 (0)	1 (0)	1 (0.1)	3 (0.21)

6. As at April 2009, there are 60 private land filling sites that are under constant monitoring or actions by Government departments. These sites are maintained in a database compiled and agreed by all concerned Government departments. The list of these sites is given at **Annex 2** and is also available on the EPD website for public information (<http://www.epd.gov.hk/epd/english/landfilling/introduction/blackspots.html>). Most of these sites are in the New Territories and over 80% of them are within Yuen Long and the North districts. The sites are usually small in size with 70% of them smaller than 0.5 ha. In total, they occupy about 36 ha of private land.

7. In terms of their land use zonings on the statutory plans, about 37% of these sites fall within the development-related zonings, mainly including the “Village Type Development”, “Open Storage” and “Comprehensive Development Area”, etc. About 25% of these sites fall within the “Agriculture” zone and about 22% fall within the conservation-related zonings including “Coastal Protection Area”, “Conservation Area” and “Green Belt”, etc. About 3% of the sites are not covered by statutory plans or do not fall within Development Permission Area.

DEPOSITING OF INERT C&D MATERIALS ON GOVERNMENT LAND

8. Apart from those activities taken place on private land, there are also incidents that involve the depositing of inert C&D materials on Government land. These activities are commonly referred to as fly-tipping which is often associated with dumping waste from vehicles.

9. Fly-tipping is in breach of the WDO. Fly-tipping may also contravene other legislation including the Land (Miscellaneous Provisions) Ordinance, the Land Drainage Ordinance, the Country Park Ordinance, and the Public Health and Municipal Ordinance; as administered by relevant Government departments. **Annex 3** provides a summary of complaint

cases received and actions taken by Government departments against fly-tipping between 2006 and 2009 (up to end of March).

10. Complaints on fly-tipping incidents are largely reported in urban areas which together account for about 80% of the complaints received by all the Government departments. **Table 3** below summarises the Government actions against fly-tipping between 2006 and 2009 (up to end of March).

Table 3 Summary of Actions taken by Government departments (between 2006 and up to end March 2009)

	EPD	FEHD	LandsD	Other Departments
No. of warning letters issued	70	1	61	0
No. of cases with barriers erected	n/a	1	110	3
No. of cases with warning signs erected	n/a	41	217	16
No. of prosecutions (by summons)	36	6	0	0
No. of convictions (by summons)	36	6	0	0
No. of fixed penalty tickets issued	65	6	0	0
Total fines (\$ '000)	253.3	20.1	0	0

11. Although there has been a noticeable increase in complaint cases on fly-tipping activities since 2006, we note that most of the complaints are concerned with small scale dumping activities such as those taking place along road sides. In some cases, the inert C&D materials were temporarily stockpiled pending removal by dump trucks engaged by the concerned contractors. In other cases, materials that were abandoned and whose sources could not be traced were cleared by relevant Government departments. Notwithstanding the increase in number of public complaints,

the amount of fly-tipped inert C&D materials cleared by various Government departments had decreased by over 30% between 2006 and 2008. Overall, the amount removed as fly-tipped materials represents less than 0.1% of the total construction waste generated for disposal at appropriate government disposal facilities during the period. So far, there had not been any incident involving large scale and uncontrolled fly-tipping activities on Government land.

12. To further enhance Government actions against fly-tipping activities, the key departments including the EPD, the HyD, the LandsD, and the Food and Environmental Hygiene Department (FEHD) have identified a total of 42 black-spots with recurrent fly-tipping activities. The list of black-spots is given at **Annex 4** and is also available on EPD's website for public information (<http://www.epd.gov.hk/epd/english/landfilling/introduction/blackspots.html>). These black-spots have been put under close surveillance and monitoring by Government departments concerned.

ENHANCED PUBLIC COMPLAINT HANDLING PROCEDURES AND ACTIONS BY GOVERNMENT DEPARTMENTS

13. As reported in the meeting of this Panel on 23 February 2009 (LC Paper No. CB(1)807/08-09(05)), Government departments have enhanced their operation procedures to handle land filling complaints involving C&D materials, especially those involving active and on-going depositing activities that would pose risks to environmentally sensitive areas. **Annex 5A** is a flowchart showing the enhanced complaint handling procedures against private land filling cases. **Annex 5B** is a flowchart for handling public complaints on active fly-tipping activities involving C&D materials. The above enhanced procedures have already been incorporated into a new Government circular issued by the Environment Bureau in January 2009 for all the Government departments to follow.

14. Various Government departments have been taking, and where resources permit, enhancing preventive and remedial actions within their authorities in tackling land filling and fly-tipping problems. **Annex 6** summarizes the types of actions taken by the Government departments and time normally required for such actions.

Environmental Protection Department
May 2009

Summary of Complaint Statistics - Depositing of Inert C&D materials on Private Land

	2006				2007				2008				2009 (Jan - Mar)			
	PlanD	LandsD	EPD	Other Departments#	PlanD	LandsD	EPD	Other Departments#	PlanD	LandsD	EPD	Other Departments#	PlanD	LandsD	EPD	Other Departments#
No. of public complaints received	81	25	57	4	79	25	97	8	190	53	119	45	45	58	41	31
No. of complaints referred by other government departments	49	4	14	9	90	13	29	17	121	18	70	38	49	34	19	19
Total	130	29	71	13	169	38	126	25	311	71	189	83	94	92	60	50

Departments include BD, DSD & FEHD

Private Land Filling sites (involving inert C&D materials)**私人土地堆填地點 (惰性拆建物料)**

District	地區	Location	地點	Approx Area (ha) 大約面積(公頃)	Land Use Zoning in Development Permission Area (DPA) / Outline Zoning Plan (OZP)	發展審批地區/分區計劃大綱圖內的土地用途地帶
Islands	離島	Ham Tin Kau Tsuen, Pui O, Lantau	大嶼山貝澳鹹田舊村	0.5	Partly Village Type Development and partly Coastal Protection Area [Outside DPA]	部分鄉村式發展、部分海岸保護區 [發展審批地區以外]
Islands	離島	Leung Uk Village, Tai O, Lantau	大嶼山大澳梁屋村	0.4	N/A [Not covered by statutory plan]	不適用 [法定圖則以外]
Islands	離島	DD1 various Lots, Tung Chung (Shek Lau Po Village), Lantau	大嶼山東涌石榴埔村丈量約份第1約多個地段	1	N/A [Not covered by statutory plan]	不適用 [法定圖則以外]
North	北區	DD52 various Lots, Tin Ping Shan Tsuen, Sheung Shui	上水天平山村丈量約份第52約多個地段	5	Village Type Development [Outside DPA]	鄉村式發展[發展審批地區以外]
North	北區	DD94 various Lots, Hang Tau, Sheung Shui	上水坑頭丈量約份第94約多個地段	0.2	Agriculture	農業
North	北區	DD83 various Lots, Siu Hang San Tsuen	小坑新村丈量約份第83約多個地段	0.165	Green Belt	綠化地帶
North	北區	San Tong Po, Lau Shui Heung, Fanling	粉嶺流水響新塘莆	0.16	Agriculture	農業
North	北區	DD91 Tai Lung, Sheung Shui	上水大隴丈量約份第91約	0.1	Green Belt	綠化地帶
North	北區	DD38 various Lots and adjoining G.L., Man Uk Pin	萬屋邊丈量約份第38約多個地段及毗鄰的政府土地	0.045	Agriculture	農業
North	北區	Tong Hang, Fanling	粉嶺塘坑	0.03	Green Belt	綠化地帶
North	北區	DD87, Hung Lung Hang	恐龍坑丈量約份第87約	0.01	Agriculture	農業
Tai Po	大埔	DD19 various Lots, She Shan Tsuen	社山村丈量約份第19約多個地段	8	Agriculture	農業
Tai Po	大埔	DD7 various Lots, Tai Hang Tsuen	泰亨村丈量約份第7約多個地段	1.4	Agriculture	農業

District	地區	Location	地點	Approx Area (ha) 大約面積(公頃)	Land Use Zoning in Development Permission Area (DPA) / Outline Zoning Plan (OZP)	發展審批地區/分區計劃大綱圖內的土地用途地帶
Tuen Mun	屯門	DD130 various Lots, Yick Yuen	亦園丈量約份第 130 約多個地段	0.73	Partly Green Belt and partly Residential (Group D)	部分綠化地帶、部分住宅(丁類)
Tuen Mun	屯門	DD132 various Lots and adjoining G.L., Siu Hang Tsuen	小坑村丈量約份第 132 約多個地段及毗鄰的政府土地	0.3	Residential (Group A) [Outside DPA]	住宅(甲類)[發展審批地區以外]
Tuen Mun	屯門	DD375 various Lots, So Kwun Wat (near Chan Uk)	掃管笏(近陳屋)丈量約份第 375 約多個地段	0.9	Green Belt	綠化地帶
Tuen Mun	屯門	DD375 various Lots and DD381 various Lots, So Kwun Wat	掃管笏丈量約份第 375 約多個地段及丈量約份第 381 約多個地段	1.4	Village Type Development	鄉村式發展
Tuen Mun	屯門	DD130, Tsing Chuen Wai	青磚圍丈量約份第 130 約	0.15	Village Type Development	鄉村式發展
Tuen Mun	屯門	DD130 various Lots, San Hing Tsuen	新慶村丈量約份第 130 約多個地段	0.24	Residential (Group E)	住宅(戊類)
Yuen Long	元朗	DD102 various Lots, Shek Wu Wai and DD102 various Lots, Tin Yuen, San Tin	石湖圍丈量約份第 102 約多個地段及新田天園丈量約份第 102 約多個地段	1.9	Open Storage	露天貯物
Yuen Long	元朗	DD104 near Ha Chuk Yuen Road	下竹園路附近的丈量約份第 104 約	1.5	Village Type Development	鄉村式發展
Yuen Long	元朗	DD104, Ko Hang Tsuen	高行村丈量約份第 104 約	0.945	Open Space	休憩用地
Yuen Long	元朗	DD113 various Lots, Ma On Kong	馬鞍崗丈量約份第 113 約多個地段	0.72	Agriculture	農業
Yuen Long	元朗	Tai Kong Po, Kam Tin	錦田大江埔	0.5	Agriculture	農業
Yuen Long	元朗	DD106	丈量約份第 106 約	0.5	Village Type Development	鄉村式發展
Yuen Long	元朗	Sha Po Tsuen, near Cheung Shun San Tsuen	沙埔村近長春新村	0.48	Comprehensive Development Area	綜合發展區
Yuen Long	元朗	Buffalo Field, Kam Tin	錦田水牛田	1.5	Agriculture	農業
Yuen Long	元朗	Tai Wai Tsuen	大圍村	0.35	Village Type Development [Outside DPA]	鄉村式發展[發展審批地區以外]

District	地區	Location	地點	Approx Area (ha) 大約面積(公頃)	Land Use Zoning in Development Permission Area (DPA) / Outline Zoning Plan (OZP)	發展審批地區/分區計劃大綱圖內的土地用途地帶
Yuen Long	元朗	DD104 various Lots, Mai Po	米埔丈量約份第 104 約多個地段	0.298	Residential (Group D)	住宅(丁類)
Yuen Long	元朗	DD98 various Lots and adjoining G.L., Ki Lung Tsuen, Ngau Tam Mei	牛潭尾麒麟山丈量約份第 98 約多個地段及毗鄰的政府土地	0.225	Green Belt	綠化地帶
Yuen Long	元朗	DD110, Tsat Sing Kong Tsuen, Pat Heung	八鄉七星崗村丈量約份第 110 約	0.185	Agriculture	農業
Yuen Long	元朗	DD104, San Wai	新圍丈量約份第 104 約	0.15	Village Type Development	鄉村式發展
Yuen Long	元朗	DD98 various Lots, Ki Lun Tsuen	麒麟村丈量約份第 98 約多個地段	0.094	Green Belt	綠化地帶
Yuen Long	元朗	DD99, Yan Shan Wai	仁壽圍丈量約份第 99 約	0.06	Village Type Development	鄉村式發展
Yuen Long	元朗	DD104, Nagu Tam Mei, San Tin	新田牛潭尾丈量約份第 104 約	0.06	Comprehensive Development Area	綜合發展區
Yuen Long	元朗	DD99, Hop Shing Wai, San Tin	新田合成圍丈量約份第 99 約	0.059	Other Specified Uses (Comprehensive Development and Wetland Enhancement Area)	其他指定用途(綜合發展區和濕地改善地區)
Yuen Long	元朗	DD98 various Lots and adjoining G.L., Ki Lun Shan	麒麟山丈量約份第 98 約多個地段及毗鄰的政府土地	0.05	Open Storage	露天貯物
Yuen Long	元朗	DD104 various Lots, Ngau tam Mei, San Tin	新田牛潭尾丈量約份第 104 約多個地段	0.04	Industrial (Group D)	工業(丁類)
Yuen Long	元朗	Tung Bin Road near Kam Sheung Road	東邊路近錦上路	0.025	Agriculture	農業
Yuen Long	元朗	DD109 various Lots, Shui Mei Tsuen	水尾村丈量約份第 109 約多個地段	0.0245	Village Type Development	鄉村式發展
Yuen Long	元朗	DD118 various Lots, Tai Shu Ha Road West	大樹下西路丈量約份第 118 約多個地段	0.08	Agriculture	農業
Yuen Long	元朗	DD124 various Lots, San Sang San Tsuen, Ping Shan	屏山新生新村丈量約份第 124 約多個地段	0.06	Green Belt	綠化地帶

District	地區	Location	地點	Approx Area (ha) 大約面積(公頃)	Land Use Zoning in Development Permission Area (DPA) / Outline Zoning Plan (OZP)	發展審批地區/分區計劃大綱圖內的土地用途地帶
Yuen Long	元朗	DD119, Wong Nai Tun Tsuen	黃泥墩村丈量約份第 119 約	0.003	Undetermined	未決定用途
Yuen Long	元朗	DD114 various Lots, Lui Kung Tin	雷公田丈量約份第 114 約多個地段	0.3	Partly Conservation Area and partly Residential (Group D)	部分自然保育區、部分住宅(丁類)
Yuen Long	元朗	DD124 various Lots, San Sang Tsuen, Ha Tsuen Heung	廈村鄉新生村丈量約份第 124 約多個地段	1.1	Village Type Development and Residential (Group D)	部分鄉村式發展、部分住宅(丁類)
Yuen Long	元朗	DD106, Kam Sheung Road, Pat Heung	八鄉錦上路丈量約份第 106 約	0.02	Village Type Development	鄉村式發展
Yuen Long	元朗	DD99, Hip Shing Wai, Mai Po	米埔合盛圍村丈量約份第 99 約	1	Other Specified Use	其他指定用途
Yuen Long	元朗	DD113 various Lots, Ma On Kong Tsuen, Kam Sheung Road, Pat Heung	八鄉錦上路馬安崗村丈量約份第 113 約多個地段	0.5	Village Type Development	鄉村式發展
Yuen Long	元朗	DD115, Nam Sang Wai	南生圍丈量約份第 115 約	0.1	Conservation Area	自然保育區
Yuen Long	元朗	DD109, Tai Kong Po, Kam Tin	錦田大江埔丈量約份第 109 約	0.3	Village Type Development	鄉村式發展
Yuen Long	元朗	DD109, Tai Kong Po, Kam Tin	錦田大江埔丈量約份第 109 約	0.08	Agriculture	農業
Yuen Long	元朗	DD99, San Tin	新田丈量約份第 99 約	0.14	Other Specified Use	其他指定用途
Yuen Long	元朗	DD96, Chau Tau, San Tin	新田洲頭丈量約份第 96 約	0.08	Green Belt	綠化地帶
Yuen Long	元朗	DD99, Chau Tau, San Tin	新田洲頭丈量約份第 99 約	1.15	Partly Conservation Area and partly Other Specified Uses	部分自然保育區、部分其他指定用途
Yuen Long	元朗	DD106, Kam Sheung Road, Kam Tin	錦田錦上路丈量約份第 106 約	0.08	Agriculture	農業
Yuen Long	元朗	DD125 and adjoining G.L., Ngau Hom Shek, Deep Bay Road	深灣路鰲磡石丈量約份第 125 約及毗鄰的政府土地	0.11	Agriculture	農業
Yuen Long	元朗	DD125 various Lots	丈量約份第 125 約多個地段	0.15	Partly Green Belt and partly Recreation	部分綠化地帶、部分康樂用地

District	地區	Location	地點	Approx Area (ha) 大約面積(公頃)	Land Use Zoning in Development Permission Area (DPA) / Outline Zoning Plan (OZP)	發展審批地區/分區計劃大綱圖內的土地用途地帶
Yuen Long	元朗	DD104 various Lots, Mai Po	米埔丈量約份第 104 約多個地段	0.09	Recreation	康樂用地
Yuen Long	元朗	DD129 various Lots, Lau Fau Shan	流浮山丈量約份第 129 約多個地段	0.45	Green Belt	綠化地帶
Yuen Long	元朗	DD129 various Lots, Sha Kiu Tsuen, Lau Fau Shan	流浮山沙橋村丈量約份第 129 約多個地段	0.05	Coastal Protection Area	海岸保護區

Summary of Fly-tipping Statistics (involving C&D materials on Government Land)

	2006					2007					2008					2009 (Jan - Mar)				
	EPD	HyD	FEHD	LandsD	Other Departments#	EPD	HyD	FEHD	LandsD	Other Departments#	EPD	HyD	FEHD	LandsD	Other Departments#	EPD	HyD	FEHD	LandsD	Other Departments#
Complaints																				
No. of public complaints received	895	1,429	668	244	6	717	1,839	1,097	361	4	1,004	1,652	1,710	733	38	235	331	346	211	6
No. of complaints referred by other government departments	580	0	6	295	1	854	0	7	322	1	1,539	360	15	519	0	460	441	6	161	2
Action taken																				
No. of warning letters issued	6	0	0	0	0	22	0	0	1	0	42	0	1	39	0	0	0	0	21	0
No. of cases with barriers erected	n/a	0	0	19	2	n/a	0	0	33	1	n/a	0	1	43	0	n/a	0	0	15	0
No. of cases with warning signs erected	n/a	0	1	58	2	n/a	0	0	83	0	n/a	0	38	56	11	n/a	0	2	20	3
No. of spots cleared	n/a	1,272	116	462	2	n/a	1,380	20	516	1	n/a	1,849	50	464	31	n/a	599	11	137	6
Prosecution																				
No. of prosecutions (by summons)	7	0	0	0	0	16	0	0	0	0	11	n/a	6	0	0	2	n/a	0	0	0
No. of convictions (by summons)	7	0	0	0	0	16	0	0	0	0	11	n/a	6	0	0	2	n/a	0	0	0
No. of fixed penalty tickets issued	9	0	2	0	0	19	0	1	0	0	35	n/a	3	0	0	2	n/a	0	0	0
Total fines (\$'000)	49.5	0	3.0	0	0	96.0	0	1.5	0	0	94.3	n/a	15.6	0	0	13.5	n/a	0	0	0

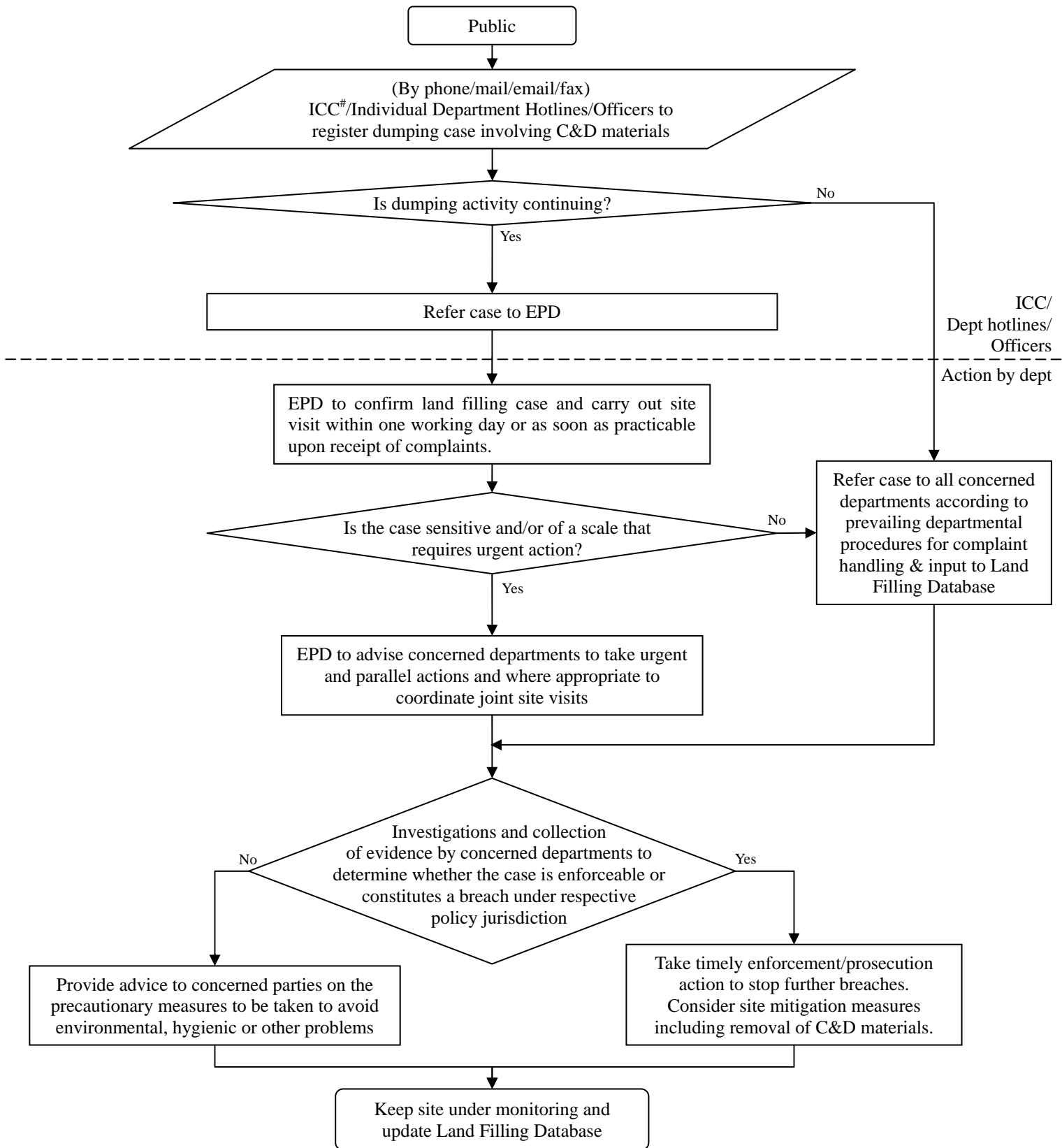
#Departments include CEDD, DSD, HAD & AFCD

Fly-tipping black-spots (involving inert C&D materials)**非法傾倒廢物黑點 (惰性拆建物料)**

District	地區	Location	地點
Islands	離島	Area behind Silvermine Beach Hotel, Mui Wo	梅窩銀礦灣酒店後面範圍
Kowloon City	九龍城	Sung On Street near Refuse Collection Point	崇安街近垃圾站
Kowloon City	九龍城	Wan On Street (roundabout)	環安街(迴旋處)
Kwai Tsing	葵青	Liu To Road, near the Gate of WSD Reservoir and the entrance of Tsing Yi Nature Trail	寮肚路近水務署水塘閘口及青衣自然教育徑
Kwai Tsing	葵青	Castle Peak Road, Kwai Chung section, off Wah Yuen Chuen	青山公路葵涌段華員邨對出範圍
Kwai Tsing	葵青	No. 1 Tam Kon Shan Road, pavement besides Public Toilet, Tsing Yi	青衣担桿山路 1 號公廁側行人路
Kwun Tong	觀塘	Behind Kai Fuk Road footbridge adjacent to Petrol Filling Station (West bound)	啓福道天橋後面近油站(西行方向)
Kwun Tong	觀塘	Near Wan Hon Street Refuse Collection Point	近雲漢街垃圾站
Kwun Tong	觀塘	Cheung Yip Street near Refuse Transfer Station and New Kowloon Bay Vehicle Inspection Centre	九龍灣祥業街近廢物轉運站和九龍灣驗車中心
North	北區	Access Road from Man Kam To Road to Sheung Shui Wah Shan	文錦渡路往上水華山通路
North	北區	Area near end of Tai Lung Experiment Farm	大隴實驗農場附近範圍
North	北區	Wo Hing Indoor Recreation Centre, Wo Ming Lane	和鳴里和興體育館
North	北區	Tit Hang, Chau Tau	洲頭鐵坑
Sai Kung	西貢	Anderson Road (near KWP Quarry)	安達臣道近嘉安石礦場
Sai Kung	西貢	Wan Po Road [AREA 137], Tseung Kwan O	將軍澳環保大道 137 區
Sai Kung	西貢	Chun Cheong Street public carpark, Tseung Kwan O	將軍澳駿昌街公眾停車場
Sham Shui Po	深水埗	Wing Hong Street	永康街
Sham Shui Po	深水埗	Apliu Street	鴨寮街
Sham Shui Po	深水埗	Tung Chau Street near Kiu Kiang Street	通州街近九江街
Sham Shui Po	深水埗	Fuk Wing Street (includes Side lane of No. 25-31 Fuk Wing Street)	福榮街(包括福榮街 25-31 號橫巷)
Sham Shui Po	深水埗	Shek Kip Mei Street / Ki Lung Street	石硤尾街/基隆街
Sham Shui Po	深水埗	Lai Chi Kok Road (adjacent to L/P E8171)	荔枝角道(近燈柱 E8171)

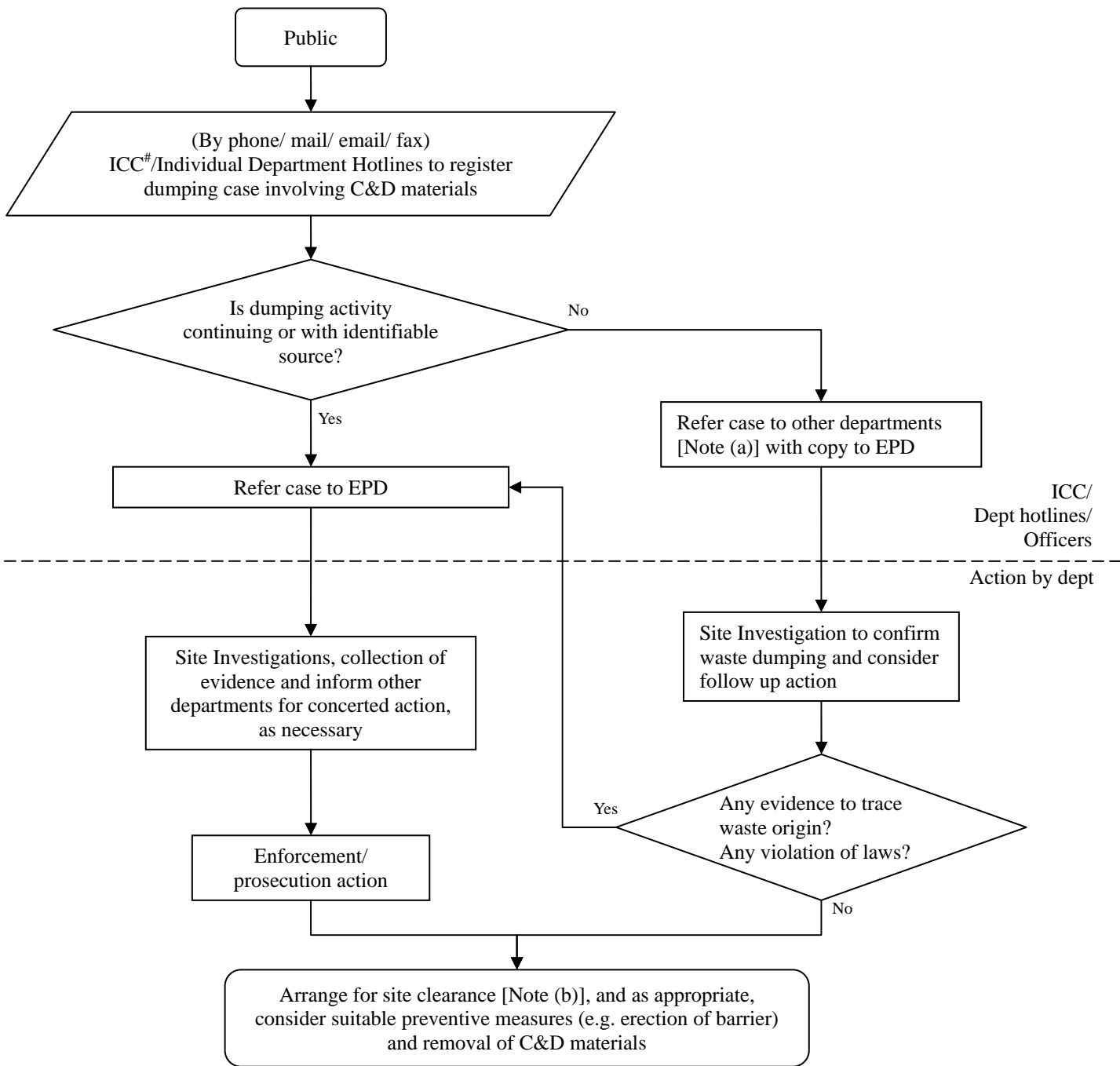
District	地區	Location	地點
Sham Shui Po	深水埗	Hing Wah Street West near roundabout 7A (L/P AA8194)	興華街西近 7A 迴旋處(燈柱 AA8194)
Shatin	沙田	Heung Fan Liu Street	香粉寮街
Shatin	沙田	Kak Tin, Tai Wai	大圍隔田
Shatin	沙田	Tai Po Road, Piper's Hill section	大埔公路琵琶山段
Shatin	沙田	Ngau Pei Sha New Village	牛皮沙新村
Tai Po	大埔	Fung Yuen Road	鳳園路
Tai Po	大埔	Dai Hei Street	大喜街
Tuen Mun	屯門	Hong Po Road	康寶路
Tuen Mun	屯門	San On Street	新安街
Tuen Mun	屯門	Siu Lang Shui Road	小冷水路
Tuen Mun	屯門	The track near burial ground of Tong Hang Road	近塘亨路墓地小徑
Tuen Mun	屯門	Tsang Tsui Road	曾嘴路
Tuen Mun	屯門	Tsing Yeung Circuit Carpark	青楊街停車場
Yuen Long	元朗	Access Road at Western Side of Fung Kong Tsuen	鳳降村西面通路
Yuen Long	元朗	Shek Wu Wai East, San Tin	新田石湖圍東
Yuen Long	元朗	Shui Mei Tsuen Yuen Long	元朗水尾村
Yuen Long	元朗	Area around ex-Yau Kung Primary School in San Sang Tsuen, Ha Tsuen	廈村鄉新生村前友恭學校及其附近地段
Yuen Long	元朗	Kam Tai Road (near Tai Kong Po)	錦泰路(近大江埔)
Yuen Long	元朗	Shek Tong Tsuen	石塘村
Yuen Long	元朗	San Lung Wai, Chuk Hang, Pat Heung, Yuen Long	元朗八鄉新隆圍竹坑

Flowchart for Handling Public Complaints on Active Land Filling Activities Involving C&D Materials



ICC to refer to their own protocol for handling fly-tipping and land filling complaints.

Flowchart for Handling Public Complaints on Active Fly-tipping Activities Involving C&D Materials



<p>Note (a) Hygiene – FEHD Drainage – DSD Ecology – AFCD Slope/ building – BD Slope safety – GEO/CEDD</p>	<p>Note (b) AFCD – country park DSD – engineered drainage channels and drainage system maintained by them and Designated Watercourses covered by Land Drainage Ordinance HAD – engineered drainage channels and drainage system maintained by them HyD – public roads including pedestrian walkways and public rear lanes and roadside slopes maintained by them LandsD – unallocated government land excluding Government land under the control of other Government Departments where formal land allocation is not required Other depts – allocated govt land and govt land under their control</p>
---	--

ICC to refer to their own protocol for handling fly-tipping and land filling complaints.

Time for action by Government departments

A: Land Filling on Private Land

Department	Action	Time normally required	Remarks
DSD	1. Arrange for removal of C&D materials that may increase the flood risk on Main Watercourses designated under Land Drainage Ordinance.	Not less than 30 days, upon service of the statutory notice, in accordance with s.18(2) of the Land Drainage Ordinance	Joint investigation with the land owner and concerned departments may be required.
EPD	1. Conduct site inspection and investigation and inform concerned Government departments	Within 1 working day or as soon as practicable for on-going dumping activities that are of large scale or affecting environmentally sensitive areas, otherwise normally within 3 working days.	Arrange for joint investigation with other concerned departments subject to merits of the case
FEHD	1. To remove the C&D materials illegally dumped in FEHD's venue. 2. To issue a notice to the owner concerned of the private land requiring him to remove litter and waste arising from land filling/dumping of C&D material	Normally 2 days. Normally 3 working days are required to check the ownership and issue a notice Normally 2 days are given to the owner for complying with the notice.	

Department	Action	Time normally required	Remarks
FEHD	3. To remove any accumulation of water likely to contain larvae or pupae of mosquitoes; or any article capable of causing accumulation of water which allows the breeding of mosquitoes	Normally 3 working days are required to issue a notice to the responsible person to eliminate the accumulation of water. Normally 2 days are given to the responsible person for complying with the notice.	
PlanD	<p>1. Conduct site inspection and investigation; and where necessary consult concerned Government departments.</p> <p>2. Serve statutory notices to require discontinuation of the unauthorized land/pond filling activities:</p> <p>A. Stop Notice under s.23(2) of the Town Planning Ordinance [where the Authority considers that continuance of the relevant matters could- (i) constitute a health or safety hazard; (ii) adversely affect the environment; or (iii) make it impracticable or uneconomic to reinstate the land within a reasonable period]</p>	<p>Within 1 to 2 weeks or as soon as practicable for land filling activities in environmentally sensitive areas.</p> <p>Normally one day for compliance upon service of the statutory notice for urgent cases.</p>	Compliance period subject to merits of the case..

Department	Action	Time normally required	Remarks
PlanD	<p>B. Enforcement Notice under s.23(1) of the Town Planning Ordinance [Where in the opinion of the Authority, there is or was unauthorized development].</p> <p>3. To reinstate the land through issuing Reinstatement Notice under s.23(3) of the Town Planning Ordinance.</p>	<p>Normally 7 to 14 days for compliance upon service of the statutory notice.</p> <p>Not less than 30 days for compliance, upon service of the statutory notice, in accordance with s.23(3) of the Town Planning Ordinance.</p>	<p>Compliance period subject to merits of the case.</p> <p>To be undertaken by notice recipient(s).</p> <p>Compliance period and reinstatement requirements subject to merits of the case.</p>

B: Fly-tipping on Government Land

<u>Department</u>	<u>Action</u>	<u>Time normally required</u>	<u>Remarks</u>
AFCD	<ol style="list-style-type: none"> To remove the C&D materials illegally dumped in country parks. To put up warning sign / fence off the site / block the site entrance, etc. 	<p>The time required would depend on the location and accessibility. AFCD would aim at clearing dumped materials in two weeks. Longer time is needed for sites with particularly difficult access, the amount being exceptionally large, or the dumped material requires special handling.</p> <p>2 days for putting up warning sign, and fence off the site normally within 5 days.</p>	
DSD	<ol style="list-style-type: none"> Arrange for removal of C&D materials for engineered drainage channels and drainage system maintained by DSD. 	<p>Normally not more than 3 working days from the date required action by DSD as notified, or as soon as practicable if the dumping activities are of large scale.</p>	

<u>Department</u>	<u>Action</u>	<u>Time normally required</u>	<u>Remarks</u>
EPD	1. Conduct site inspection and investigation	Within 1 working day or as soon as practicable for urgent case, otherwise normally 3 working days.	Arrange for joint investigation with other concerned departments subject to merits of the case
FEHD	1. To remove the C&D materials illegally dumped in FEHD's venue.	Normally 2 days.	
HyD	1. To clear dumping on expressways. 2. Upon discovery of fly-tipping on public roads under HyD's maintenance purview, to notify the prosecuting department and arrange contractors to undertake necessary clearance action.	Within 12 hours upon receipt of a report. The time of clearance action is normally within 3 working days.	
LandsD	1. To remove the C&D materials illegally dumped on unallocated Government Land excluding Government Land under the control of other Government Departments where formal land allocation is not required.	The time required for removal of dumping would depend on the actual site situation. DLO normally attempts to clear the dumping within 10 days from date of detection or receipt of complaint/referral depending on the scale of removal works.	

<u>Department</u>	<u>Action</u>	<u>Time normally required</u>	<u>Remarks</u>
LandsD	2. To put up warning sign /guard house/ fence off the site / block the site entrance, etc.	Whether to put up warning sign/guard house/fence off the site/block the site entrance, etc would depend on necessity and the time required for erection of such items would depend on the actual site situation. In appropriate cases a guard may be deployed within 1 or 2 days and for erection of fencing, warning signs and blocking of access within 5 working days.	