



會 學 醫 港 香
The Hong Kong Medical Association

FOUNDED IN 1920•INCORPORATED IN 1960 AS A COMPANY LIMITED BY GUARANTEE
MEMBER OF WORLD MEDICAL ASSOCIATION AND CONFEDERATION OF MEDICAL ASSOCIATIONS IN ASIA & OCEANIA

Duke of Windsor Social Service Building, 5th Floor, 15 Hennessy Road, Hong Kong
E-mail: hkma@hkma.org Home Page: <http://www.hkma.org>
Tel. No.: 2527 8285 (6 lines) Fax: (852) 2865 0943

香港軒尼詩道十五號
溫莎公爵大廈五樓

20 June 2009

To LegCo Panel on Food Safety and Environmental Hygiene

HKMA Stand on Nutrition Labelling

The Hong Kong Medical Association, with our motto “safeguarding the people’s health”, supports the Administration in implementing the Nutrition Labelling Scheme as scheduled. Good health and safety are always our priority consideration.

The basic principle for nutrition labelling should be: when the component in question is present in excessive amount would be hazardous to health, then it should be mandatory labeled. If a claim is made on any nutrients, the information should be accurate, clear and must not be misleading.

We would like to take the opportunity to draw the attention of the Administration to products sold via Internet and to imported food, particularly infant and toddler food from territories with foreign languages. They may fall outside the proposed scheme but pose grave threat to public health risks as their labels are not written in Chinese or English. The public rely on the Government to regulate the safety of these products but only to find out that they are exempted from the scheme when there are mishaps. Examples of nutrition labels outside the scheme are attached for reference.

As there is a trend of internet shopping and mothers flocking to foreign infant and toddler food, the Hong Kong Medical Association would like to urge the Administration to safeguard the health of our younger generation by adding these products into the nutrition labeling scheme.

Summary of Japan's Infant and Toddler Products

Brand Name	Meji (明治)	Morinaga (森永)	Wakodo (和光堂)	Bean Stalk	ICREO (固力果)
Infant Formula (初生- 9個月適用)					
Follow-on Formula (9個月- 3歲適用)					

Chinese Labelling on Japan IMF Products Comparison

Brand Name	Snow 日本雪印		Meji 明治		Morinaga 森永		Wakado 和光堂		Bean Stalk		ICREO 固力果	
	1	2	1	2	1	2	1	2	1	2	1	2
1=Infant 2= Follow-on												
Nutrition Information	x	x	x	x	E	E	x	x	x	x	x	x
Ingredients	x	✓	x	✓	E	E	x	x	C	C	C	C
Preparation	x	x	x	x	x	x	x	x	x	x	x	x
Feeding Table	x	x	x	C	E	E	x	x	C	C	C	C
Important Notice	x	x	x	x	x	x	x	x	x	x	x	x

Remarks: ✓ = Both Chi & Eng

E = English Only

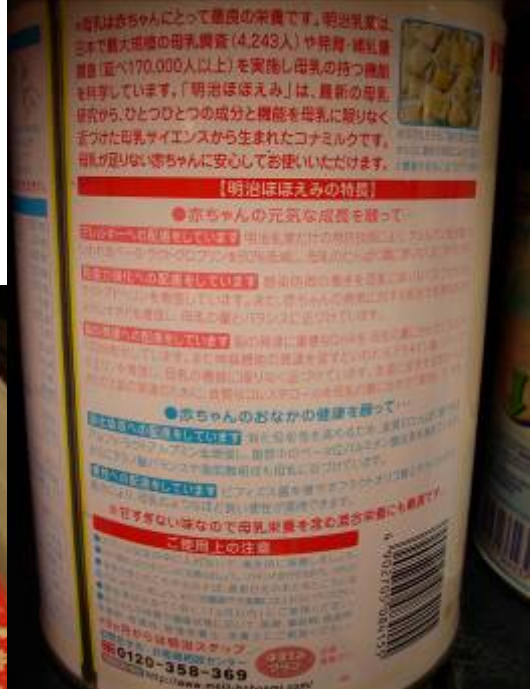
x = Neither Chi nor Eng

C= Chinese Only


Snow(日本雪印)-2



Meji (明治)- 1



Meji (明治)- 2

明治成長嬰兒奶粉 (9個月-3歲)

每匙匙奶粉(約5.6克) 可沖調40毫升奶 (奶粉及水計)

月齡	每日餵哺次數	1次標準量匙	1日用量
9-12個月	2次(全奶粉)	5匙	200ml
	3次(離乳後)	2-3匙	80-120ml
12-18個月	2次(全奶粉)	5匙	200ml
	5次(食事後)	1-2匙	40-80ml
18個月-3歲	2次(全奶粉)	5匙	200ml

以上圖表只供參考,要因應小孩的食量而加減

0527



【請於3歲までの日本人の食事摂取基準(2005年版)に於ける幼児に
 ビタミンA(250µg) 100% ビタミンB1(10.5mg) 100%
 ビタミンB2(1.0mg) 100%
 ビタミンB6(1.0mg) 100%
 ビタミンC(40mg) 100%
 ビタミンD(25µg) 100%
 ビタミンE(5mg) 100%

栄養成分(100g当たり)
 エネルギー 461 kcal | ビタミンB1 0.7 mg | 塩分 0.7 g

日本明治 成長嬰兒奶粉 (9個月-3歲) 淨重: 850g

成分: 乳粉(全乳粉) 40.0%, 乳清粉(全乳粉) 40.0%, 糖(全乳粉) 10.0%, 鹽化鈉 0.5%, 鹽化鈣 0.5%, 鹽化鎂 0.5%, 鹽化鋅 0.5%, 鹽化銅 0.5%, 鹽化錳 0.5%, 鹽化鉀 0.5%, 鹽化鈉 0.5%, 鹽化鈣 0.5%, 鹽化鎂 0.5%, 鹽化鋅 0.5%, 鹽化銅 0.5%, 鹽化錳 0.5%, 鹽化鉀 0.5%

Ingredients: Lactose, Modified edible fat, and isolate, Casein of Fat of whole Milk, Maltodextrin, Skim milk powder, Dextrose, Calcium Carbonate, Phosphate, Magnesium Oxide, Potassium Citrate, Sodium Bicarbonate, Calcium Phosphate, Magnesium Oxide, Vitamin A, Vitamin B1, Vitamin B2, Vitamin B6, Vitamin C, Vitamin D, Vitamin E, Vitamin K, Calcium phosphate, Sodium chloride, Sodium carbonate, Sodium phosphate, Sodium bicarbonate, Sodium citrate, Sodium gluconate, Sodium lactate, Sodium succinate, Sodium tartrate, Sodium acetate, Sodium benzoate, Sodium citrate, Sodium phosphate, Sodium sulfate, Sodium silicate, Sodium sulfite, Sodium sulfonate, Sodium sulfosulfate, Sodium sulfotriphosphate, Sodium tetraborate, Sodium tetraborate pentahydrate, Sodium tetraborate hexahydrate, Sodium tetraborate heptahydrate, Sodium tetraborate octahydrate, Sodium tetraborate nonahydrate, Sodium tetraborate decahydrate, Sodium tetraborate undecahydrate, Sodium tetraborate dodecahydrate, Sodium tetraborate pentadecahydrate, Sodium tetraborate hexadecahydrate, Sodium tetraborate heptadecahydrate, Sodium tetraborate octadecahydrate, Sodium tetraborate nonadecahydrate, Sodium tetraborate eicosahydrate, Sodium tetraborate heneicosahydrate, Sodium tetraborate docosahydrate, Sodium tetraborate tricosahydrate, Sodium tetraborate tetracosahydrate, Sodium tetraborate pentacosahydrate, Sodium tetraborate hexacosahydrate, Sodium tetraborate heptacosahydrate, Sodium tetraborate octacosahydrate, Sodium tetraborate nonacosahydrate, Sodium tetraborate triacontahydrate, Sodium tetraborate hriacontahydrate, Sodium tetraborate tetracontahydrate, Sodium tetraborate pentacosahydrate, Sodium tetraborate hexacosahydrate, Sodium tetraborate heptacosahydrate, Sodium tetraborate octacosahydrate, Sodium tetraborate nonacosahydrate, Sodium tetraborate triacontahydrate, Sodium tetraborate hriacontahydrate, Sodium tetraborate tetracontahydrate

Country of Origin: Japan

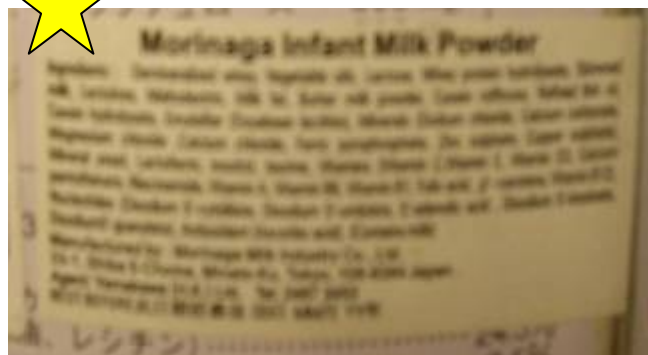
明治成長嬰兒奶粉 (9個月-3歲) 淨重: 850g

成分: 乳粉(全乳粉) 40.0%, 乳清粉(全乳粉) 40.0%, 糖(全乳粉) 10.0%, 鹽化鈉 0.5%, 鹽化鈣 0.5%, 鹽化鎂 0.5%, 鹽化鋅 0.5%, 鹽化銅 0.5%, 鹽化錳 0.5%, 鹽化鉀 0.5%

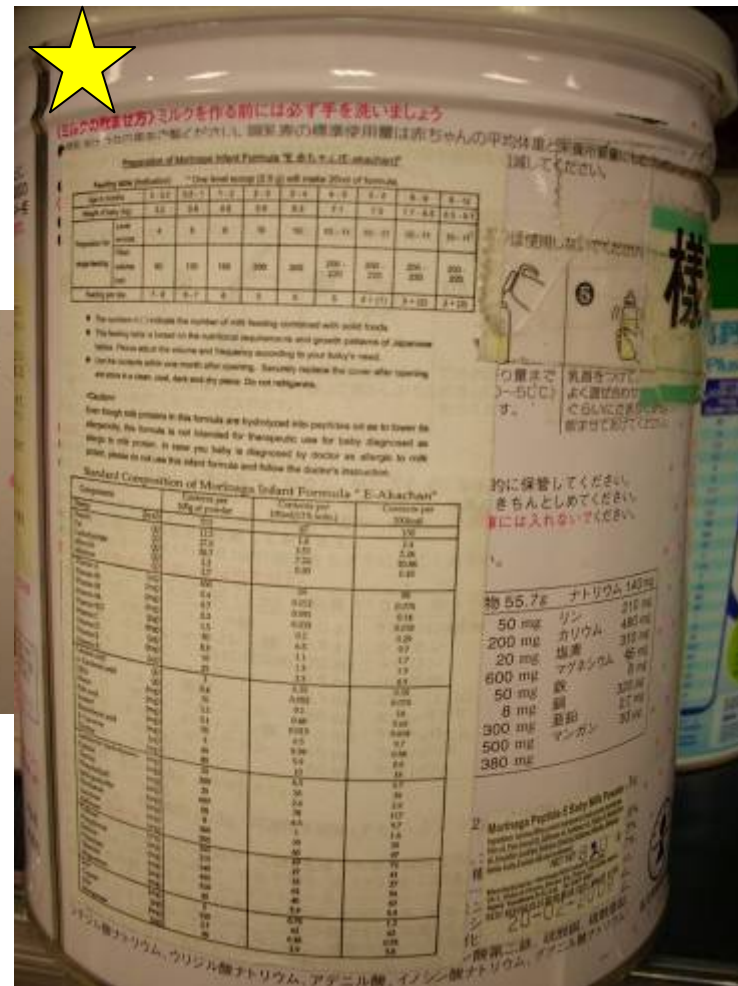
Ingredients: Lactose, Modified edible fat, and isolate, Casein of Fat of whole Milk, Maltodextrin, Skim milk powder, Dextrose, Calcium Carbonate, Phosphate, Magnesium Oxide, Potassium Citrate, Sodium Bicarbonate, Calcium Phosphate, Magnesium Oxide, Vitamin A, Vitamin B1, Vitamin B2, Vitamin B6, Vitamin C, Vitamin D, Vitamin E, Vitamin K, Calcium phosphate, Sodium chloride, Sodium carbonate, Sodium phosphate, Sodium bicarbonate, Sodium citrate, Sodium gluconate, Sodium lactate, Sodium succinate, Sodium tartrate, Sodium acetate, Sodium benzoate, Sodium citrate, Sodium phosphate, Sodium sulfate, Sodium silicate, Sodium sulfite, Sodium sulfonate, Sodium sulfosulfate, Sodium sulfotriphosphate, Sodium tetraborate, Sodium tetraborate pentahydrate, Sodium tetraborate hexahydrate, Sodium tetraborate heptahydrate, Sodium tetraborate octahydrate, Sodium tetraborate nonahydrate, Sodium tetraborate decahydrate, Sodium tetraborate undecahydrate, Sodium tetraborate dodecahydrate, Sodium tetraborate pentadecahydrate, Sodium tetraborate hexadecahydrate, Sodium tetraborate heptadecahydrate, Sodium tetraborate octadecahydrate, Sodium tetraborate nonadecahydrate, Sodium tetraborate eicosahydrate, Sodium tetraborate heneicosahydrate, Sodium tetraborate docosahydrate, Sodium tetraborate tricosahydrate, Sodium tetraborate tetracosahydrate, Sodium tetraborate pentacosahydrate, Sodium tetraborate hexacosahydrate, Sodium tetraborate heptacosahydrate, Sodium tetraborate octacosahydrate, Sodium tetraborate nonacosahydrate, Sodium tetraborate triacontahydrate, Sodium tetraborate hriacontahydrate, Sodium tetraborate tetracontahydrate

Country of Origin: Japan

Morinaga(森永)-1



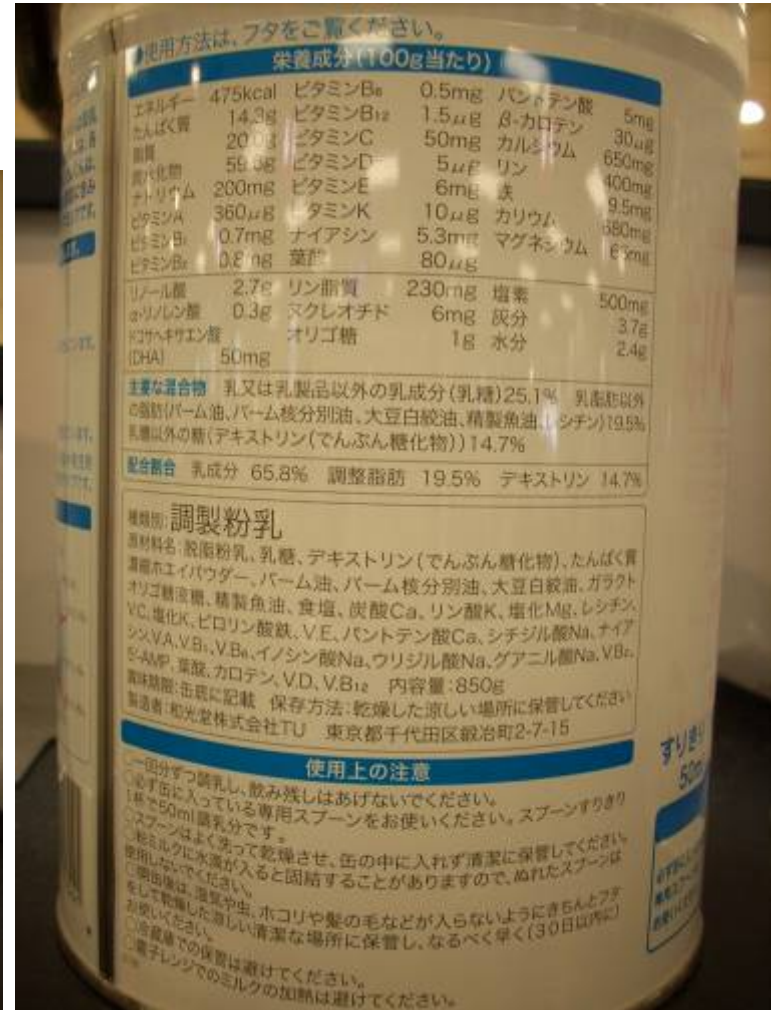
Morinaga(森永)-2



Wakado(和光堂)-1



Wakado(和光堂)-2



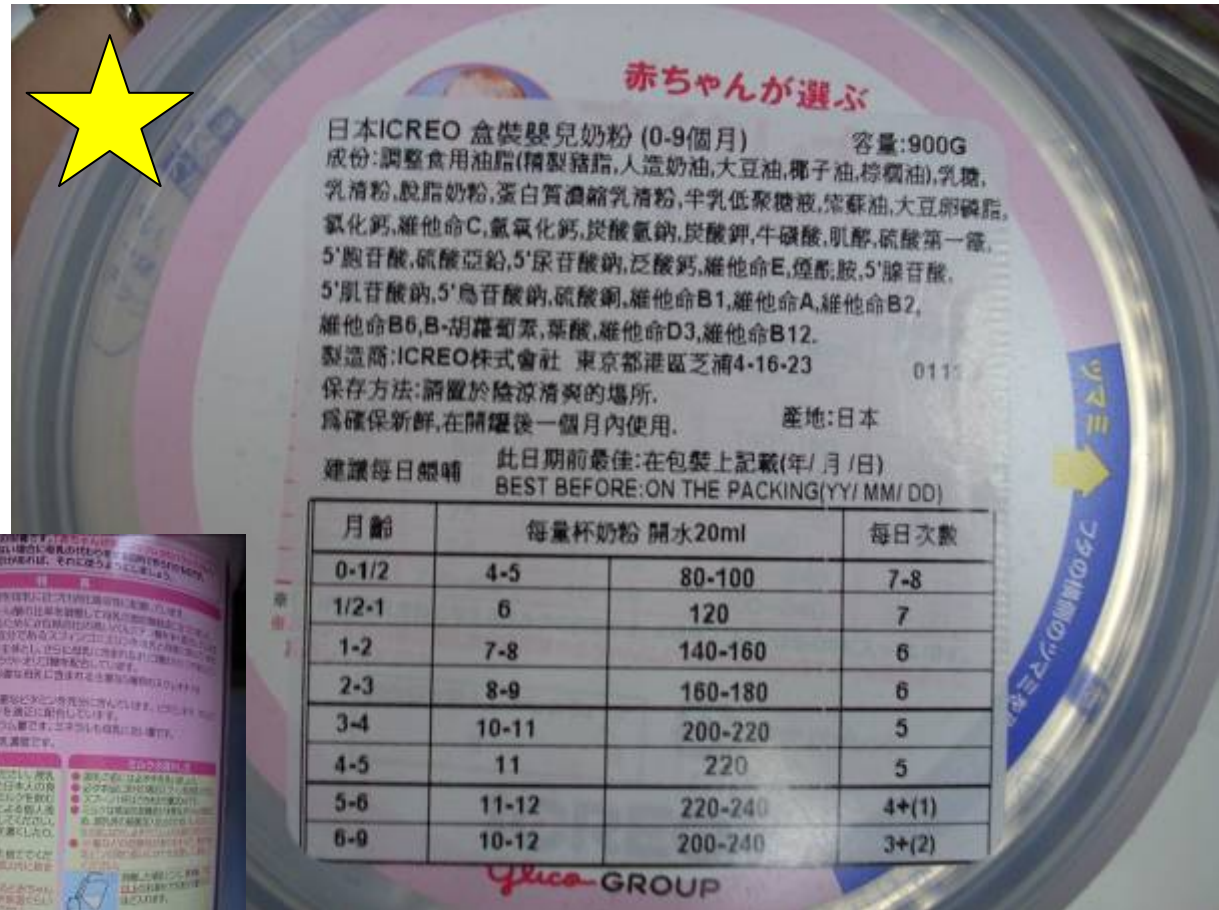
Beanstalk-1



Beanstalk-2



ICREO(固力果)-1



ICREO(固力果)-2

