

Press Release

Land Registry statistics for August 2009

The Land Registry today (September 2) released its statistics for August 2009.

Land Registration

- The number of sale and purchase agreements for all building units received for registration in August 2009 was 13,245 (-5.7% compared with July 2009 but +106.9% compared with August 2008)
- The 12-month moving average for August 2009 was 9,063 (this was 6.7% above the 12-month moving average for July 2009 but 26.5% below that for August 2008)
- The total consideration of sale & purchase agreements in August 2009 was \$53.2 billion (-0.8% compared with July 2009 but +195% compared with August 2008)
- Among the sale & purchase agreements, 11,250 were for residential units (-6.4% compared with July 2009 but +112.9% compared with August 2008)
- The total consideration for these sale & purchase agreements was \$41 billion (-5.9% compared with July 2009 but +173.7% compared with August 2008)

Sales of residential units refer to the sale and purchase agreements with payment of stamp duty. These statistics do not include sales of units under the Home Ownership Scheme, the Private Sector Participation Scheme and the Tenants Purchase Scheme except those after payment of premium.

Figures on sale and purchase agreements received for the past 12 months, the year-on-year rate of change and breakdown figures on residential sales are also released.

As deeds may not be lodged with the Land Registry until up to 30 days after the transaction, these statistics generally relate to land transactions in the previous month.

Land Search

- The number of searches of land registers made by members of the public in August 2009 was 465,384 (-4.9% compared with July 2009 but +32.7% compared with August 2008)

The statistics cover searches made at the counter, through the self-service terminals and the IRIS Online Services.

The above figures and other related statistics for August 2009, together with corresponding statistics for July 2009 and August 2008, are provided.

THE LAND REGISTRY
Consolidated Monthly Statistics in respect of deeds received
for registration in the Land Registry

Table 1

Month : August 2009

Item	Nature of Deeds	Number of Deeds received for registration			Consideration (nearest \$ million)		
		Urban	New Territories	Total	Urban	New Territories	Total
1.	Agreements for Sale and Purchase of Building Units	6,165 (7,100)	7,080 (7,607)	13,245 (14,707)	31,714	21,475	53,189
2.	Agreements for Sale and Purchase of Land	13	203	216	691	1,198	1,889
	Sub-total (1) + (2)	6,178	7,283	13,461	32,405	22,673	55,078
3.	Assignments of Building Units	7,614 (8,640)	7,970 (8,616)	15,584 (17,256)	34,045	20,871	54,916
4.	Assignments of Land	19	528	547	1,346	1,115	2,461
	Sub-total (3) + (4)	7,633	8,498	16,131	35,391	21,986	57,377
5.	Building Mortgages/Building Legal Charges	1	13	14			
6.	Other Mortgages/Legal Charges	6,401	6,717	13,118			
	Sub-total (5) + (6)	6,402	6,730	13,132			
7.	Receipts/Discharges/Releases	6,676	6,816	13,492			
8.	Leases/Tenancy Agreements	269	127	396			
9.	Exclusion Orders	0	0	0			
10.	Others	6,540	5,304	11,844			
	Total	33,698	34,758	68,456			

Note : Figures in brackets denote the number of units involved.

THE LAND REGISTRY
Comparison of Monthly Statistics

Table 2

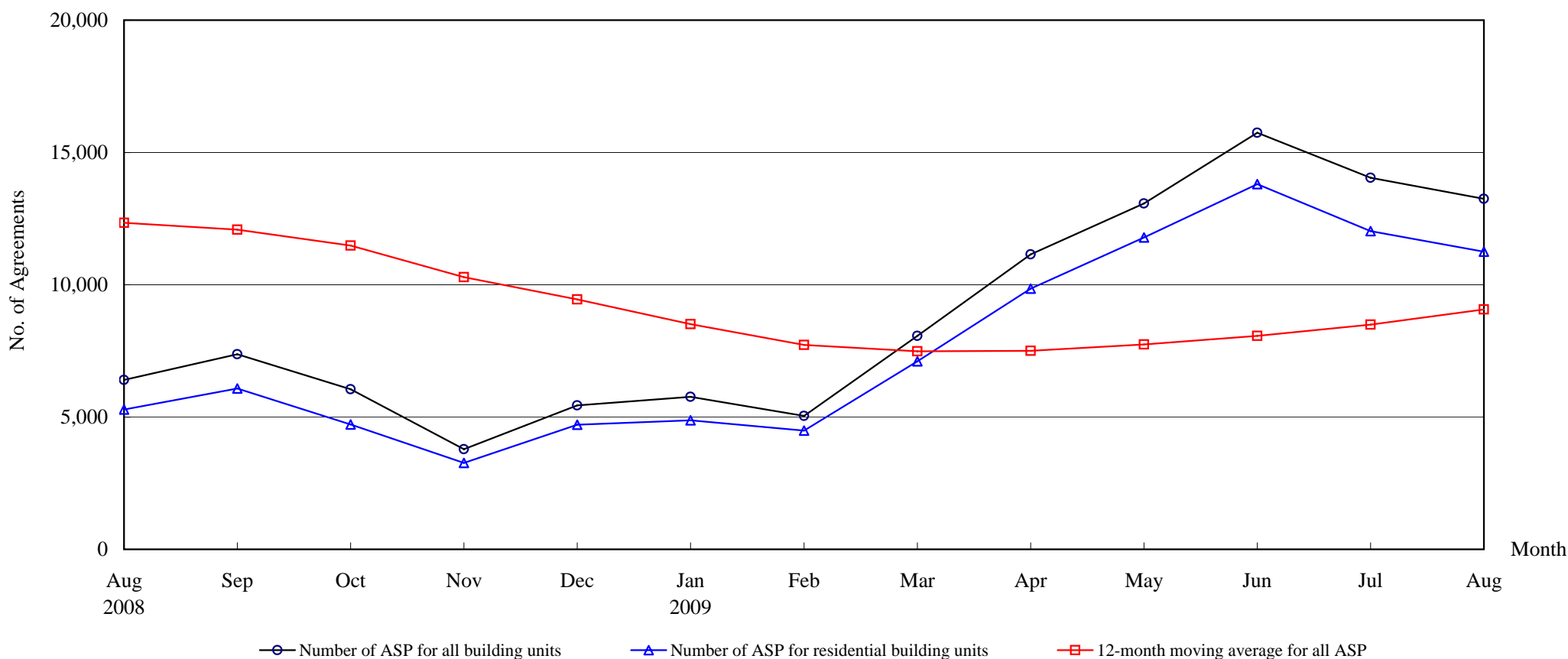
Month : August 2009

Item	2009 August	2009 July	2008 August	August 2009			
				Increase (+) or Decrease (-) as compared with			
				July 2009		August 2008	
No. or Consideration	Percentage	No. or Consideration	Percentage				
1. Agreements for Sale and Purchase of Building Units							
(a) No.	13,245	14,039	6,402	- 794	- 5.7	+ 6,843	+ 106.9
(b) Consideration	53,189	53,591	18,030	- 402	- 0.8	+ 35,159	+ 195.0
2. Agreements for Sale and Purchase of Land							
(a) No.	216	198	123	+ 18	+ 9.1	+ 93	+ 75.6
(b) Consideration	1,889	4,883	588	- 2,994	- 61.3	+ 1,301	+ 221.3
Sub-total of (1) + (2)							
(a) No.	13,461	14,237	6,525	- 776	- 5.5	+ 6,936	+ 106.3
(b) Consideration	55,078	58,474	18,618	- 3,396	- 5.8	+ 36,460	+ 195.8
3. Assignments of Building Units							
(a) No.	15,584	15,280	11,736	+ 304	+ 2.0	+ 3,848	+ 32.8
(b) Consideration	54,916	54,493	36,197	+ 423	+ 0.8	+ 18,719	+ 51.7
4. Assignments of Land							
(a) No.	547	619	464	- 72	- 11.6	+ 83	+ 17.9
(b) Consideration	2,461	4,239	3,821	- 1,778	- 41.9	- 1,360	- 35.6
Sub-total of (3) + (4)							
(a) No.	16,131	15,899	12,200	+ 232	+ 1.5	+ 3,931	+ 32.2
(b) Consideration	57,377	58,732	40,018	- 1,355	- 2.3	+ 17,359	+ 43.4
5. No. of Building Mortgages/Building Legal Charges	14	8	8	+ 6	+ 75.0	+ 6	+ 75.0
6. No. of Other Mortgages/Legal Charges	13,118	12,523	10,829	+ 595	+ 4.8	+ 2,289	+ 21.1
Sub-total of (5) + (6)	13,132	12,531	10,837	+ 601	+ 4.8	+ 2,295	+ 21.2
7. No. of Receipts/Discharges/Releases	13,492	12,824	12,679	+ 668	+ 5.2	+ 813	+ 6.4
8. No. of Public Search	465,384	489,506	350,732	- 24,122	- 4.9	+ 114,652	+ 32.7

Note : Consideration rounded to the nearest million Hong Kong dollars.

The Land Registry
Chart showing the number of Sale and Purchase Agreements of
building units from August 2008 to August 2009

Table 3



Number of Sale and Purchase Agreements of building units

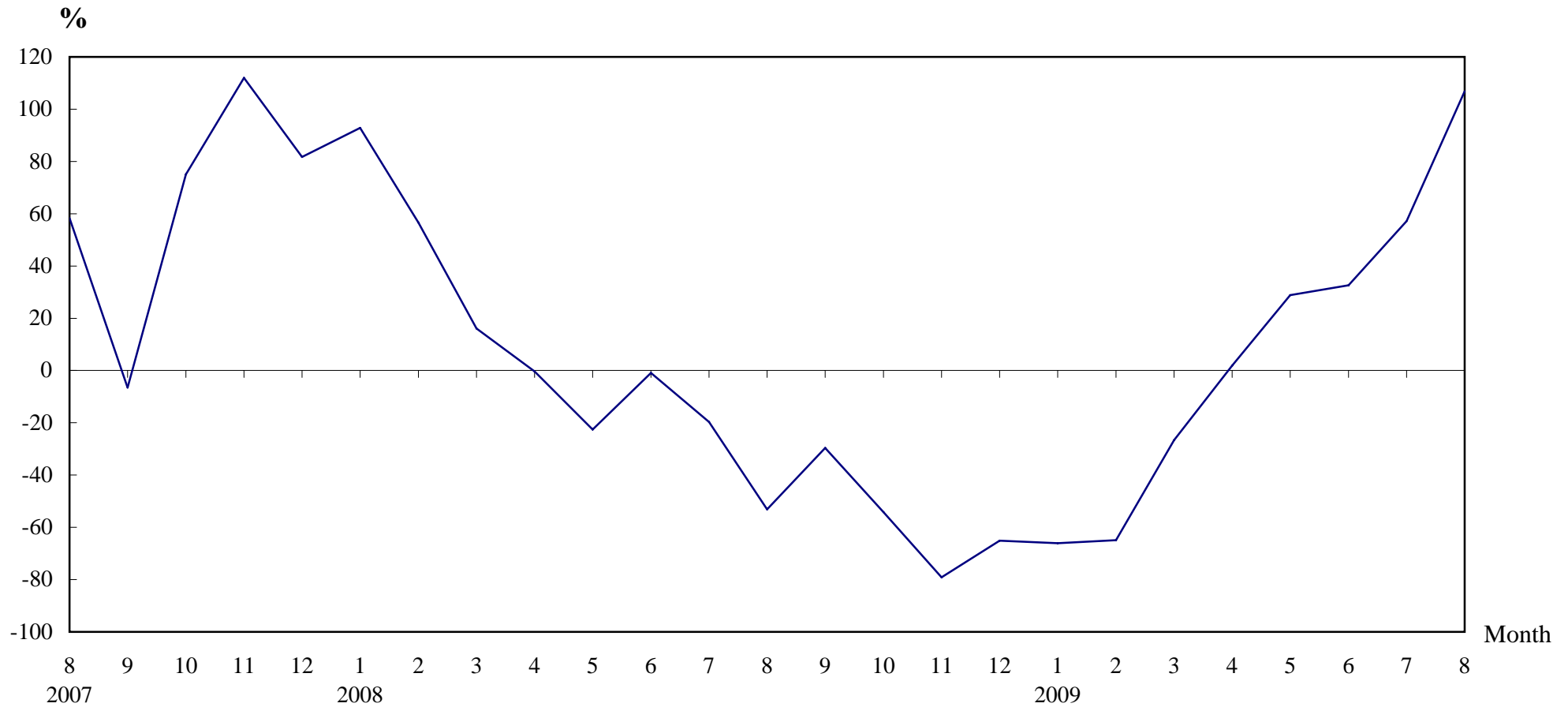
Year	2008					2009							
Month	Aug	Sep	Oct	Nov	Dec	Jan	Feb	Mar	Apr	May	Jun	Jul	Aug
Number of ASP for all building units	6,402	7,369	6,054	3,786	5,437	5,759	5,043	8,062	11,148	13,067	15,747	14,039	13,245
Number of ASP for residential building units	5,284	6,075	4,719	3,264	4,706	4,875	4,487	7,102	9,856	11,788	13,805	12,023	11,250
12-month moving average for all ASP	12,338	12,079	11,481	10,288	9,442	8,506	7,728	7,483	7,500	7,744	8,067	8,493	9,063

Note : Sales of residential units refer to sale and purchase agreements with payment of stamp duty. These statistics do not include sales of units under the Home Ownership Scheme, the Private Sector Participation Scheme and the Tenants Purchase Scheme except those after payment of premium.

The Land Registry

Table 4

Year-on-year Rate of Change in the Number of Sale and Purchase Agreements



Number of Sale and Purchase Agreements of residential and non-residential building units

Year/Month	Jan	Feb	Mar	Apr	May	Jun	Jul	Aug	Sep	Oct	Nov	Dec
2007	8,807	9,188	9,470	10,973	13,090	11,979	11,121	13,664	10,475	13,227	18,105	15,592
2008	16,984	14,384	10,993	10,945	10,138	11,876	8,930	6,402	7,369	6,054	3,786	5,437
2009	5,759	5,043	8,062	11,148	13,067	15,747	14,039	13,245				

Table 5**THE LAND REGISTRY****Number of Sale and Purchase Agreements of residential building units and total consideration
from August 2008 to August 2009**

Year / Month		Range of Consideration (\$ million)												Total	
		Less than 1		1 to less than 2		2 to less than 3		3 to less than 5		5 to less than 10		10 or over			
		No.	%	No.	%	No.	%	No.	%	No.	%	No.	%	No.	Consideration (\$ million)
2008	8	644	12	2,387	45	1,013	19	736	14	352	7	152	3	5,284	14,974
	9	701	12	2,379	39	1,350	22	1,043	17	434	7	168	3	6,075	18,733
	10	612	13	1,937	41	933	20	617	13	471	10	149	3	4,719	16,279
	11	542	17	1,387	42	568	17	444	14	224	7	99	3	3,264	9,007
	12	616	13	1,960	42	787	17	539	11	477	10	327	7	4,706	17,662
2009	1	643	13	1,928	40	995	20	748	15	303	6	258	5	4,875	16,124
	2	650	14	1,842	41	852	19	644	14	326	7	173	4	4,487	13,622
	3	954	13	2,904	41	1,227	17	1,094	15	454	6	469	7	7,102	25,448
	4	1,045	11	3,605	37	1,914	19	2,154	22	720	7	418	4	9,856	31,580
	5	1,085	9	4,702	40	2,378	20	1,938	16	1,099	9	586	5	11,788	39,423
	6	1,197	9	4,636	34	2,472	18	3,342	24	1,477	11	681	5	13,805	49,713
	7	1,067	9	4,467	37	2,317	19	2,338	19	1,199	10	635	5	12,023	43,567
	8	893	8	3,796	34	1,880	17	2,709	24	1,472	13	500	4	11,250	40,987

Note : Figures in percentage for individual items may not add up to 100% due to rounding.

THE LAND REGISTRY

Monthly Statistics in respect of Sale & Purchase Agreements
of building units received for registration on regional basis

Month: August 2009

Item	District	Sale and Purchase Agreements of Building Units	
		No. of Transactions	Consideration (nearest \$million)
1.	Hong Kong	2,575	15,487
2.	Kowloon	3,590	16,227
3.	Islands	271	1,297
4.	North	346	687
5.	Sai Kung	2,211	9,547
6.	Shatin	896	2,348
7.	Tai Po	421	1,153
8.	Tsuen Wan	1,263	3,294
9.	Tuen Mun	780	1,131
10.	Yuen Long	892	2,018
	Total	13,245	53,189