

## Press Release

### Land Registry statistics for September 2009

\*\*\*\*\*

The Land Registry today (October 5) released its statistics for September 2009.

#### Land Registration

- The number of sale and purchase agreements for all building units received for registration in September 2009 was 14,437 (+9% compared with August 2009 and +95.9% compared with September 2008)
- The 12-month moving average for September 2009 was 9,652 (this was 6.5% above the 12-month moving average for August 2009 but 20.1% below that for September 2008)
- The total consideration of sale & purchase agreements in September 2009 was \$67 billion (+26.1% compared with August 2009 and +184.6% compared with September 2008)
- Among the sale & purchase agreements, 12,285 were for residential units (+9.2% compared with August 2009 and +102.2% compared with September 2008)
- The total consideration for these sale & purchase agreements was \$56.2 billion (+37% compared with August 2009 and +199.8% compared with September 2008)

Sales of residential units refer to the sale and purchase agreements with payment of stamp duty. These statistics do not include sales of units under the Home Ownership Scheme, the Private Sector Participation Scheme and the Tenants Purchase Scheme except those after payment of premium.

Figures on sale and purchase agreements received for the past 12 months, the year-on-year rate of change and breakdown figures on residential sales are also released.

As deeds may not be lodged with the Land Registry until up to 30 days after the transaction, these statistics generally relate to land transactions in the previous month.

### Land Search

- The number of searches of land registers made by members of the public in September 2009 was 468,440 (+0.7% compared with August 2009 and +34.4% compared with September 2008)

The statistics cover searches made at the counter, through the self-service terminals and the IRIS Online Services.

The above figures and other related statistics for September 2009, together with corresponding statistics for August 2009 and September 2008, are provided.

**THE LAND REGISTRY**  
Consolidated Monthly Statistics in respect of deeds received  
for registration in the Land Registry

**Table 1**

Month : September 2009

Item	Nature of Deeds	Number of Deeds received for registration			Consideration (nearest \$ million)		
		Urban	New Territories	Total	Urban	New Territories	Total
1.	Agreements for Sale and Purchase of Building Units	7,490 ( 8,704 )	6,947 ( 7,502 )	14,437 ( 16,206 )	49,926	17,123	67,049
2.	Agreements for Sale and Purchase of Land	16	204	220	2,523	1,588	4,111
	Sub-total (1) + (2)	7,506	7,151	14,657	52,449	18,711	71,160
3.	Assignments of Building Units	8,078 ( 8,931 )	7,127 ( 7,516 )	15,205 ( 16,447 )	35,492	15,398	50,890
4.	Assignments of Land	27	565	592	2,013	1,424	3,437
	Sub-total (3) + (4)	8,105	7,692	15,797	37,505	16,822	54,327
5.	Building Mortgages/Building Legal Charges	1	1	2			
6.	Other Mortgages/Legal Charges	6,713	6,270	12,983			
	Sub-total (5) + (6)	6,714	6,271	12,985			
7.	Receipts/Discharges/Releases	7,337	7,498	14,835			
8.	Leases/Tenancy Agreements	280	141	421			
9.	Exclusion Orders	0	0	0			
10.	Others	5,604	5,019	10,623			
	Total	35,546	33,772	69,318			

Note : Figures in brackets denote the number of units involved.

**THE LAND REGISTRY**  
**Comparison of Monthly Statistics**

**Table 2**

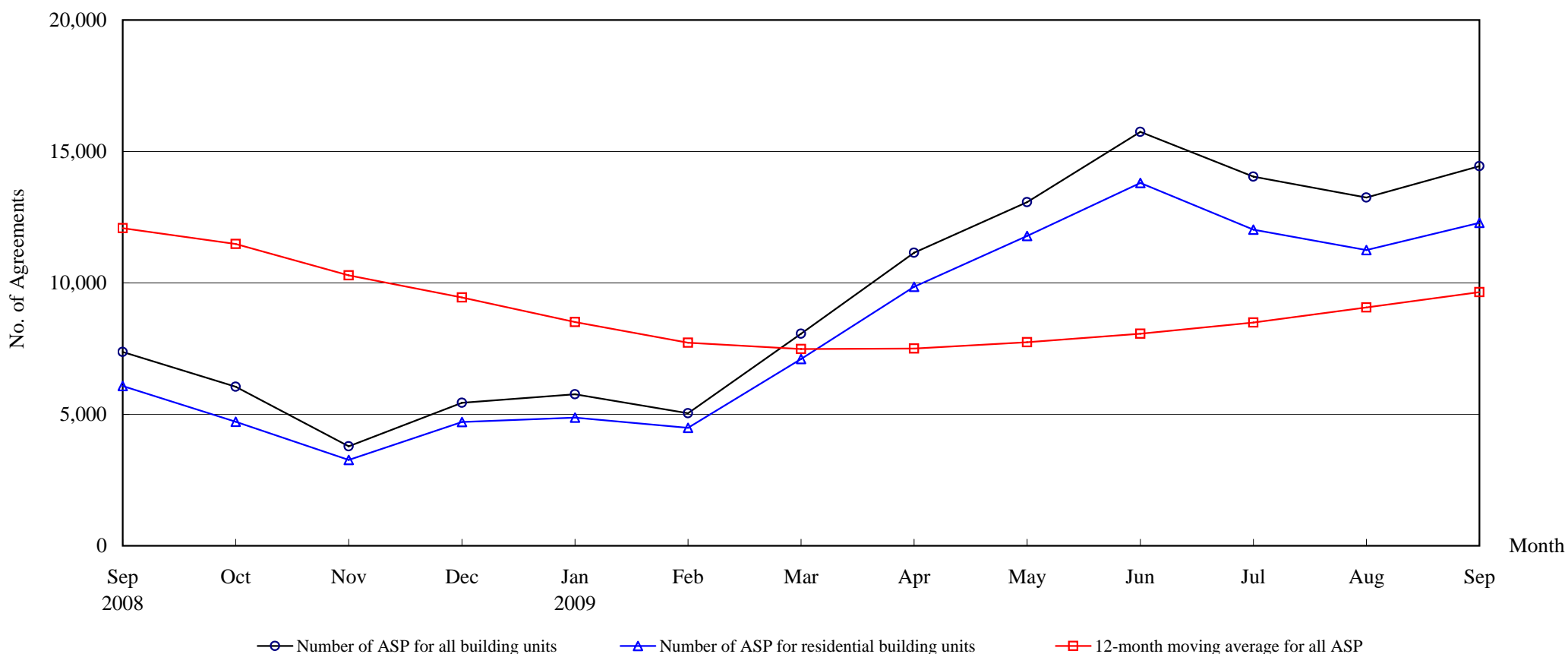
Month : September 2009

Item	2009 September	2009 August	2008 September	September 2009 Increase (+) or Decrease (-) as compared with							
				August 2009		September 2008					
				No. or	Consideration	Percentage	No. or	Consideration	Percentage		
1. Agreements for Sale and Purchase of Building Units											
(a) No.	14,437	13,245	7,369	+	1,192	+	9.0	+	7,068	+	95.9
(b) Consideration	67,049	53,189	23,559	+	13,860	+	26.1	+	43,490	+	184.6
2. Agreements for Sale and Purchase of Land											
(a) No.	220	216	147	+	4	+	1.9	+	73	+	49.7
(b) Consideration	4,111	1,889	1,390	+	2,222	+	117.6	+	2,721	+	195.8
Sub-total of (1) + (2)											
(a) No.	14,657	13,461	7,516	+	1,196	+	8.9	+	7,141	+	95.0
(b) Consideration	71,160	55,078	24,949	+	16,082	+	29.2	+	46,211	+	185.2
3. Assignments of Building Units											
(a) No.	15,205	15,584	10,700	-	379	-	2.4	+	4,505	+	42.1
(b) Consideration	50,890	54,916	34,212	-	4,026	-	7.3	+	16,678	+	48.7
4. Assignments of Land											
(a) No.	592	547	494	+	45	+	8.2	+	98	+	19.8
(b) Consideration	3,437	2,461	1,788	+	976	+	39.7	+	1,649	+	92.2
Sub-total of (3) + (4)											
(a) No.	15,797	16,131	11,194	-	334	-	2.1	+	4,603	+	41.1
(b) Consideration	54,327	57,377	36,000	-	3,050	-	5.3	+	18,327	+	50.9
5. No. of Building Mortgages/Building Legal Charges	2	14	8	-	12	-	85.7	-	6	-	75.0
6. No. of Other Mortgages/Legal Charges	12,983	13,118	9,891	-	135	-	1.0	+	3,092	+	31.3
Sub-total of (5) + (6)	12,985	13,132	9,899	-	147	-	1.1	+	3,086	+	31.2
7. No. of Receipts/Discharges/Releases	14,835	13,492	12,331	+	1,343	+	10.0	+	2,504	+	20.3
8. No. of Public Search	468,440	465,384	348,658	+	3,056	+	0.7	+	119,782	+	34.4

Note : Consideration rounded to the nearest million Hong Kong dollars.

**The Land Registry**  
**Chart showing the number of Sale and Purchase Agreements of**  
**building units from September 2008 to September 2009**

**Table 3**



**Number of Sale and Purchase Agreements of building units**

Year	2008				2009								
Month	Sep	Oct	Nov	Dec	Jan	Feb	Mar	Apr	May	Jun	Jul	Aug	Sep
Number of ASP for all building units	7,369	6,054	3,786	5,437	5,759	5,043	8,062	11,148	13,067	15,747	14,039	13,245	14,437
Number of ASP for residential building units <sup>(1)</sup>	6,075	4,719	3,264	4,706	4,875	4,487	7,102	9,856	11,788	13,805	12,023	11,250	12,285
12-month moving average for all ASP <sup>(2)</sup>	12,079	11,481	10,288	9,442	8,506	7,728	7,483	7,500	7,744	8,067	8,493	9,063	9,652

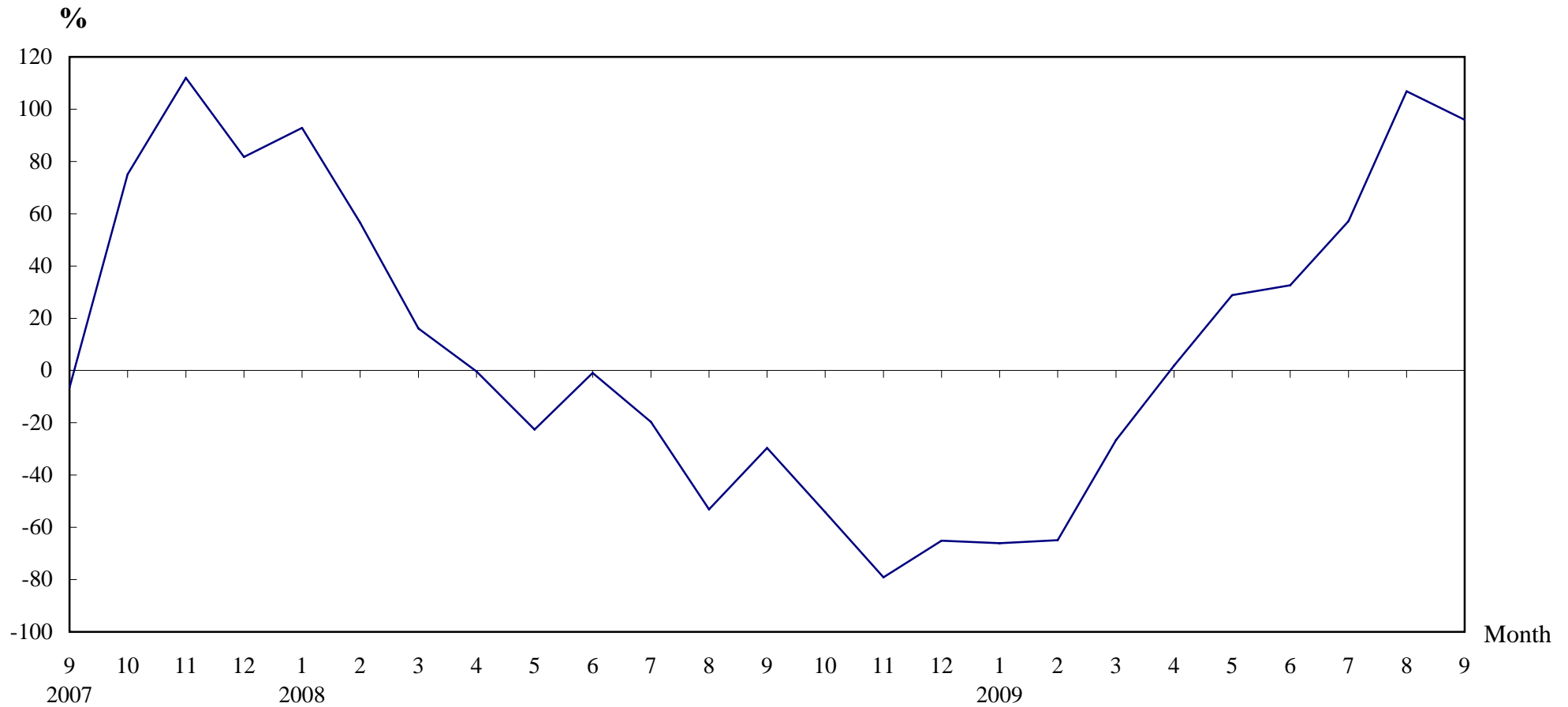
Note : (1) Sales of residential units refer to sale and purchase agreements with payment of stamp duty. These statistics do not include sales of units under the Home Ownership Scheme, the Private Sector Participation Scheme and the Tenants Purchase Scheme except those after payment of premium.

(2) 12-month moving average is calculated by dividing the sum of the figures of the previous 12 months by 12.

# The Land Registry

**Table 4**

## Year-on-year Rate of Change in the Number of Sale and Purchase Agreements



## **Number of Sale and Purchase Agreements of residential and non-residential building units**

Year/Month	Jan	Feb	Mar	Apr	May	Jun	Jul	Aug	Sep	Oct	Nov	Dec
2007	8,807	9,188	9,470	10,973	13,090	11,979	11,121	13,664	10,475	13,227	18,105	15,592
2008	16,984	14,384	10,993	10,945	10,138	11,876	8,930	6,402	7,369	6,054	3,786	5,437
2009	5,759	5,043	8,062	11,148	13,067	15,747	14,039	13,245	14,437			

**Table 5****THE LAND REGISTRY****Number of Sale and Purchase Agreements of residential building units and total consideration  
from September 2008 to September 2009**

Year / Month		Range of Consideration ( \$ million )												Total	
		Less than 1		1 to less than 2		2 to less than 3		3 to less than 5		5 to less than 10		10 or over			
		No.	%	No.	%	No.	%	No.	%	No.	%	No.	%	No.	Consideration (\$ million)
2008	9	701	12	2,379	39	1,350	22	1,043	17	434	7	168	3	6,075	18,733
	10	612	13	1,937	41	933	20	617	13	471	10	149	3	4,719	16,279
	11	542	17	1,387	42	568	17	444	14	224	7	99	3	3,264	9,007
	12	616	13	1,960	42	787	17	539	11	477	10	327	7	4,706	17,662
2009	1	643	13	1,928	40	995	20	748	15	303	6	258	5	4,875	16,124
	2	650	14	1,842	41	852	19	644	14	326	7	173	4	4,487	13,622
	3	954	13	2,904	41	1,227	17	1,094	15	454	6	469	7	7,102	25,448
	4	1,045	11	3,605	37	1,914	19	2,154	22	720	7	418	4	9,856	31,580
	5	1,085	9	4,702	40	2,378	20	1,938	16	1,099	9	586	5	11,788	39,423
	6	1,197	9	4,636	34	2,472	18	3,342	24	1,477	11	681	5	13,805	49,713
	7	1,067	9	4,467	37	2,317	19	2,338	19	1,199	10	635	5	12,023	43,567
	8	893	8	3,796	34	1,880	17	2,709	24	1,472	13	500	4	11,250	40,987
	9	922	8	4,523	37	2,361	19	2,142	17	986	8	1,351	11	12,285	56,163

Note : Figures in percentage for individual items may not add up to 100% due to rounding.

## THE LAND REGISTRY

Monthly Statistics in respect of Sale & Purchase Agreements  
of building units received for registration on regional basis

Month: September 2009

Item	District	Sale and Purchase Agreements of Building Units	
		No. of Transactions	Consideration (nearest \$million)
1.	Hong Kong	2,782	19,446
2.	Kowloon	4,708	30,480
3.	Islands	346	1,132
4.	North	480	836
5.	Sai Kung	864	2,909
6.	Shatin	1,087	2,942
7.	Tai Po	489	1,352
8.	Tsuen Wan	1,568	3,923
9.	Tuen Mun	952	1,453
10.	Yuen Long	1,161	2,576
	<b>Total</b>	14,437	67,049