

The Land Registry Monthly Press Release
Figures on Agreements for Sale and Purchase
and Statistical Tables on Instruments
Received for Registration in January 2009

The total number of sale and purchase agreements for all types of building units received for registration in the Land Registry in January 2009 was 5,759. This was 5.9% higher than December 2008 but a decrease of 66.1% compared with January 2008. Using a 12-month moving average, the figure for January 2009 represented a decrease of 9.9% from December 2008 and 33.7% compared with January 2008. The total consideration of these agreements in the month was \$18.7 billion, down 8.9% from December 2008 and 72.4% compared with the amount for January 2008.

Among the 5,759 sale and purchase agreements, 4,875 were sale and purchase agreements for residential units. This was 3.6% higher than December 2008 but a decrease of 67% compared with January 2008. The total consideration of these agreements in the month was \$16.1 billion, down 8.7% from December 2008 and 71.5% compared with the amount for January 2008. Sales of residential units refer to the sale and purchase agreements with payment of stamp duty. These statistics do not include sales of units under the Home Ownership Scheme, the Private Sector Participation Scheme and the Tenants Purchase Scheme except those after payment of premium.

The figures are contained in the monthly statistics released today by the Land Registry on deeds relating to property transactions received for registration in the Land Registry in January 2009.

Relevant statistics for December 2008 and January 2008 are provided for comparison. Figures on sale and purchase agreements received for the past 12 months, the year-on-year rate of change and breakdown figures on residential sales are also released.

As deeds may not be lodged with the Land Registry until up to 30 days after the transaction, these statistics generally relate to land transactions in the previous month.

THE LAND REGISTRY
Consolidated Monthly Statistics in respect of deeds received
for registration in the Land Registry

Table 1

Month : January 2009

Item	Nature of Deeds	Number of Deeds received for registration			Consideration (nearest \$ million)		
		Urban	New Territories	Total	Urban	New Territories	Total
1.	Agreements for Sale and Purchase of Building Units	2,869 (3,192)	2,890 (3,074)	5,759 (6,266)	13,360	5,324	18,684
2.	Agreements for Sale and Purchase of Land	6	122	128	892	409	1,301
	Sub-total (1) + (2)	2,875	3,012	5,887	14,252	5,733	19,985
3.	Assignments of Building Units	4,150 (4,836)	3,084 (3,257)	7,234 (8,093)	16,891	5,053	21,944
4.	Assignments of Land	11	514	525	420	400	820
	Sub-total (3) + (4)	4,161	3,598	7,759	17,311	5,453	22,764
5.	Building Mortgages/Building Legal Charges	0	8	8			
6.	Other Mortgages/Legal Charges	3,071	2,597	5,668			
	Sub-total (5) + (6)	3,071	2,605	5,676			
7.	Receipts/Discharges/Releases	3,018	3,364	6,382			
8.	Leases/Tenancy Agreements	205	137	342			
9.	Exclusion Orders	0	0	0			
10.	Others	4,000	3,205	7,205			
	Total	17,330	15,921	33,251			

Note : Figures in brackets denote the number of units involved.

THE LAND REGISTRY
Comparison of Monthly Statistics

Table 2

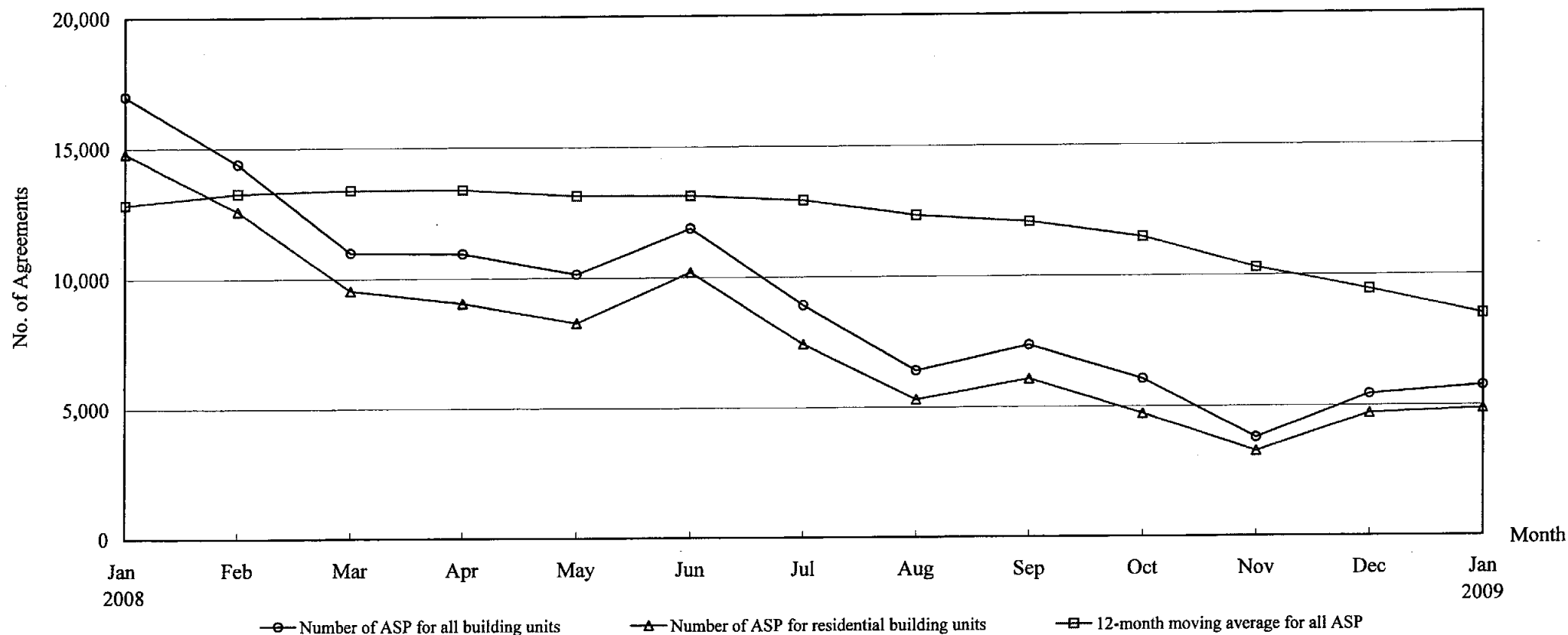
Month : January 2009

Item	2009 January	2008 December	2008 January	January 2009 Increase (+) or Decrease (-) as compared with			
				December 2008		January 2008	
				No. or Consideration	Percentage	No. or Consideration	Percentage
1. Agreements for Sale and Purchase of Building Units							
(a) No.	5,759	5,437	16,984	+ 322	+ 5.9	- 11,225	- 66.1
(b) Consideration	18,684	20,516	67,774	- 1,832	- 8.9	- 49,090	- 72.4
2. Agreements for Sale and Purchase of Land							
(a) No.	128	104	237	+ 24	+ 23.1	- 109	- 46.0
(b) Consideration	1,301	684	3,480	+ 617	+ 90.2	- 2,179	- 62.6
Sub-total of (1) + (2)							
(a) No.	5,887	5,541	17,221	+ 346	+ 6.2	- 11,334	- 65.8
(b) Consideration	19,985	21,200	71,254	- 1,215	- 5.7	- 51,269	- 72.0
3. Assignments of Building Units							
(a) No.	7,234	7,049	20,589	+ 185	+ 2.6	- 13,355	- 64.9
(b) Consideration	21,944	20,488	69,948	+ 1,456	+ 7.1	- 48,004	- 68.6
4. Assignments of Land							
(a) No.	525	512	645	+ 13	+ 2.5	- 120	- 18.6
(b) Consideration	820	1,130	2,964	- 310	- 27.4	- 2,144	- 72.3
Sub-total of (3) + (4)							
(a) No.	7,759	7,561	21,234	+ 198	+ 2.6	- 13,475	- 63.5
(b) Consideration	22,764	21,618	72,912	+ 1,146	+ 5.3	- 50,148	- 68.8
5. No. of Building Mortgages/Building Legal Charges	8	11	7	- 3	- 27.3	+ 1	+ 14.3
6. No. of Other Mortgages/Legal Charges	5,668	5,841	17,575	- 173	- 3.0	- 11,907	- 67.7
Sub-total of (5) + (6)	5,676	5,852	17,582	- 176	- 3.0	- 11,906	- 67.7
7. No. of Receipts/Discharges/Releases	6,382	8,357	15,969	- 1,975	- 23.6	- 9,587	- 60.0

Note : Consideration rounded to the nearest million Hong Kong dollars.

The Land Registry
Chart showing the number of Sale and Purchase Agreements of
building units from January 2008 to January 2009

Table 3



Number of Sale and Purchase Agreements of building units

Year	2008												2009
Month	Jan	Feb	Mar	Apr	May	Jun	Jul	Aug	Sep	Oct	Nov	Dec	Jan
Number of ASP for all building units	16,984	14,384	10,993	10,945	10,138	11,876	8,930	6,402	7,369	6,054	3,786	5,437	5,759
Number of ASP for residential building units	14,786	12,581	9,550	9,047	8,281	10,205	7,433	5,284	6,075	4,719	3,264	4,706	4,875
12-month moving average for all ASP	12,822	13,255	13,382	13,380	13,134	13,125	12,943	12,338	12,079	11,481	10,288	9,442	8,506

Note : Sales of residential units refer to sale and purchase agreements with payment of stamp duty. These statistics do not include sales of units under the Home Ownership Scheme, the Private Sector Participation Scheme and the Tenants Purchase Scheme except those after payment of premium.

Table 5**THE LAND REGISTRY****Number of Sale and Purchase Agreements of residential building units and total consideration
from January 2008 to January 2009**

Year / Month		Range of Consideration (\$ million)												Total	
		Less than 1		1 to less than 2		2 to less than 3		3 to less than 5		5 to less than 10		10 or over			
		No.	%	No.	%	No.	%	No.	%	No.	%	No.	%	No.	Consideration (\$ million)
2008	1	1,533	10	5,226	35	2,600	18	2,955	20	1,738	12	734	5	14,786	56,527
	2	1,292	10	4,817	38	2,411	19	2,336	19	1,155	9	570	5	12,581	43,765
	3	861	9	2,981	31	1,431	15	2,475	26	1,446	15	356	4	9,550	37,442
	4	1,202	13	3,731	41	1,576	17	1,442	16	757	8	339	4	9,047	27,564
	5	1,026	12	3,362	41	1,601	19	1,322	16	631	8	339	4	8,281	26,304
	6	1,096	11	3,532	35	1,640	16	1,627	16	1,207	12	1,103	11	10,205	50,431
	7	893	12	3,085	42	1,363	18	1,128	15	642	9	322	4	7,433	25,139
	8	644	12	2,387	45	1,013	19	736	14	352	7	152	3	5,284	14,974
	9	701	12	2,379	39	1,350	22	1,043	17	434	7	168	3	6,075	18,733
	10	612	13	1,937	41	933	20	617	13	471	10	149	3	4,719	16,279
	11	542	17	1,387	42	568	17	444	14	224	7	99	3	3,264	9,007
	12	616	13	1,960	42	787	17	539	11	477	10	327	7	4,706	17,662
2009	1	643	13	1,928	40	995	20	748	15	303	6	258	5	4,875	16,124

Note : Figures in percentage for individual items may not add up to 100% due to rounding.

THE LAND REGISTRY

Monthly Statistics in respect of Sale & Purchase Agreements
of building units received for registration on regional basis

Month: January 2009

Item	District	Sale and Purchase Agreements of Building Units	
		No. of Transactions	Consideration (nearest \$million)
1.	Hong Kong	1,206	8,077
2.	Kowloon	1,663	5,283
3.	Islands	94	267
4.	North	202	284
5.	Sai Kung	315	779
6.	Shatin	781	1,511
7.	Tai Po	226	429
8.	Tsuen Wan	557	1,049
9.	Tuen Mun	325	370
10.	Yuen Long	390	635
	Total	5,759	18,684