

For information
31 March 2009

Legislative Council Panel on Transport
Subcommittee on Matters relating to Railways

Pedestrian Connectivity of Austin Station with China Hong Kong City

Introduction

The purpose of this paper is to update Members of the Subcommittee in respect of the actions being undertaken by the Administration on the connectivity of Austin Station (AUS) of the Kowloon Southern Link (KSL) with China Hong King City (CHKC).

Background

2. In the Subcommittee meeting held on 16 January 2009, Members suggested that a subway should be provided between AUS and CHKC, and if a subway could not be provided in tandem with the commissioning of the KSL, a temporary cover should be considered along the relevant section of the existing footpath.

Temporary cover as short term measures

3. As we reported at the meeting on 16 January, to improve the comfort for travellers traversing along the footpath between AUS and CHKC, that section of footpath will be widened to 3.5-metre wide and repaved. We also concur with Members' view to look after the convenience of the railway/ferry travellers carrying luggage during rainy or inclement weather. We are going to provide a temporary cover over the existing footpath except for the small section in front of the Tsim Sha Tsui Fire Station and CHKC where vehicular access is required. The extent of the covered footpath is shown at Annex I.

Annex I

4. The Yau Tsim Mong District Council was informed of the temporary cover proposal on 27 February 2009 and did not express any adverse comment. The Highways Department has commenced the cover installation together with the footpath widening/repaving and will complete the works before the commissioning of the KSL, scheduled for the third quarter of 2009.

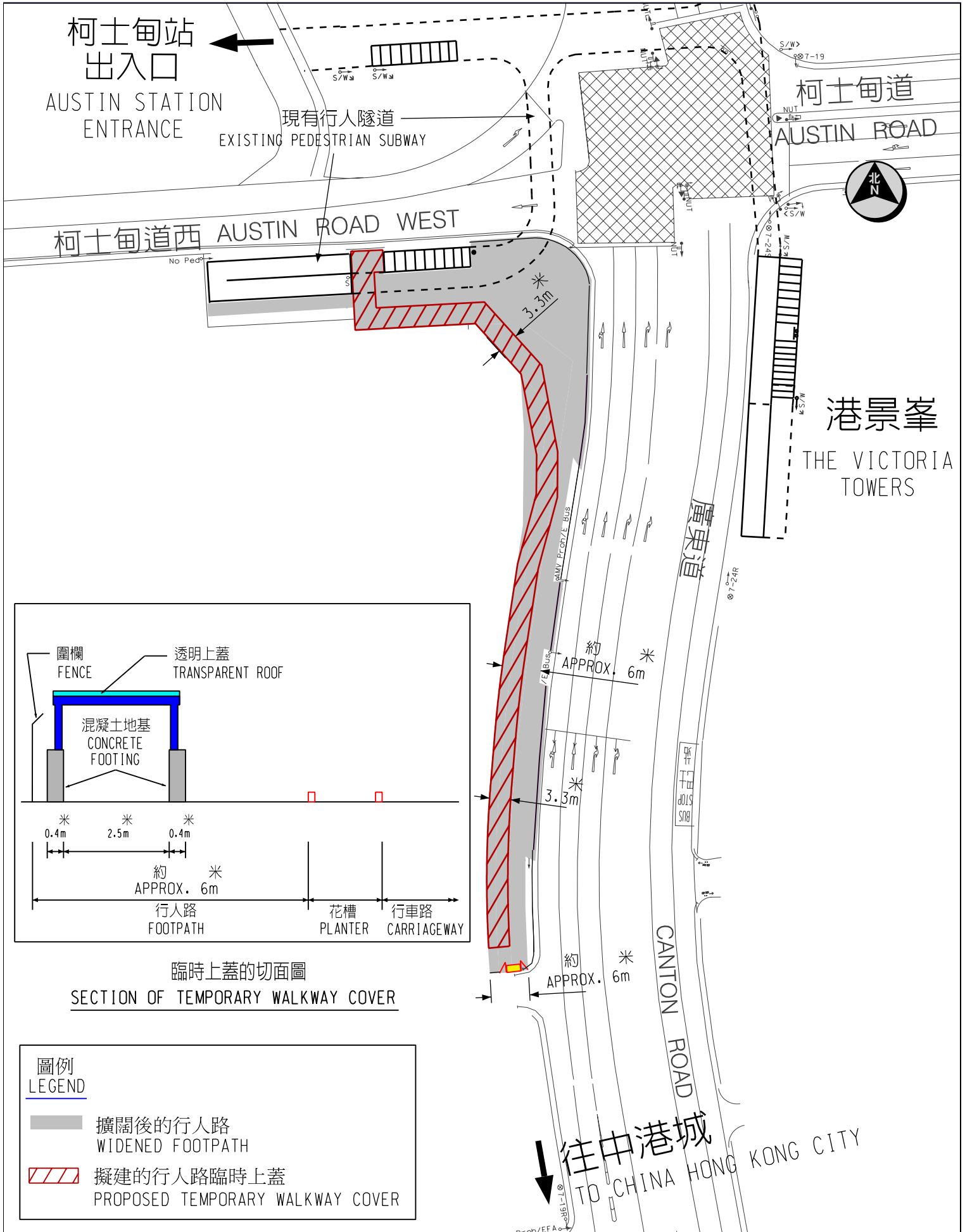
5. Meanwhile, the MTRCL is working with the Transport Department to see if the existing GMB services can be enhanced or new services can be introduced with stops near AUS and CHKC with fare concessions provided for the railway passengers.

Long term measures

6. We have been maintaining a close dialogue with the West Kowloon Cultural District (WKCD) Office to explore how to incorporate a pedestrian connection between AUS and CHKC through the site currently reserved for the WKCD. We have also briefed the Development Committee of the WKCD Authority about the proposed pedestrian connection.

7. The WKCD Office is currently selecting consultants to carry out the conceptual planning of the WKCD. The shortlisted consultants have been briefed about the requirement for the pedestrian connection. Detail discussion will proceed when the consultants are appointed.

Transport and Housing Bureau
March 2009



擬建廣東道行人路臨時上蓋 (近柯士甸道西)

PROPOSED CANTON ROAD TEMPORARY WALKWAY COVER (NEAR AUSTIN ROAD WEST)