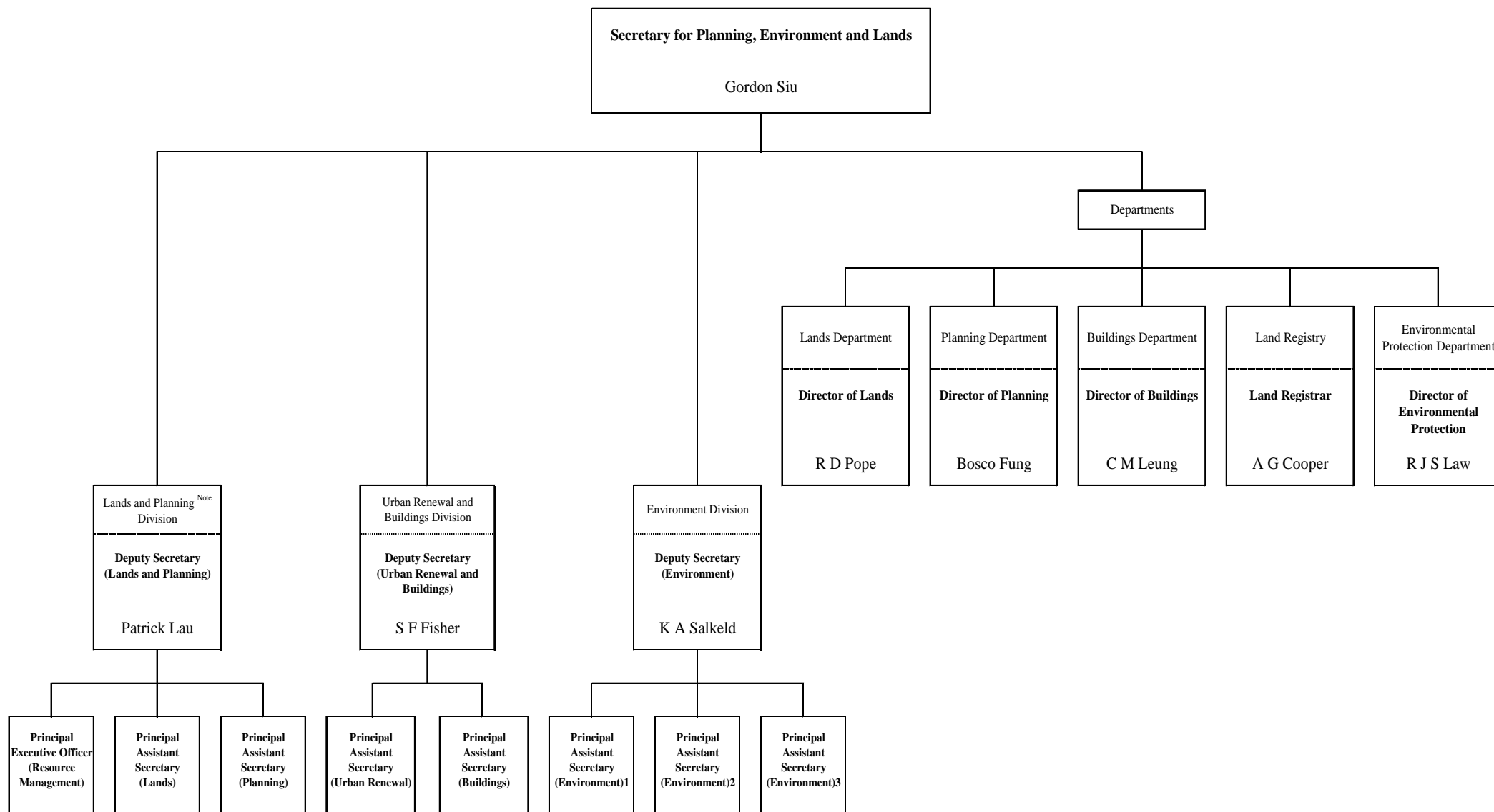
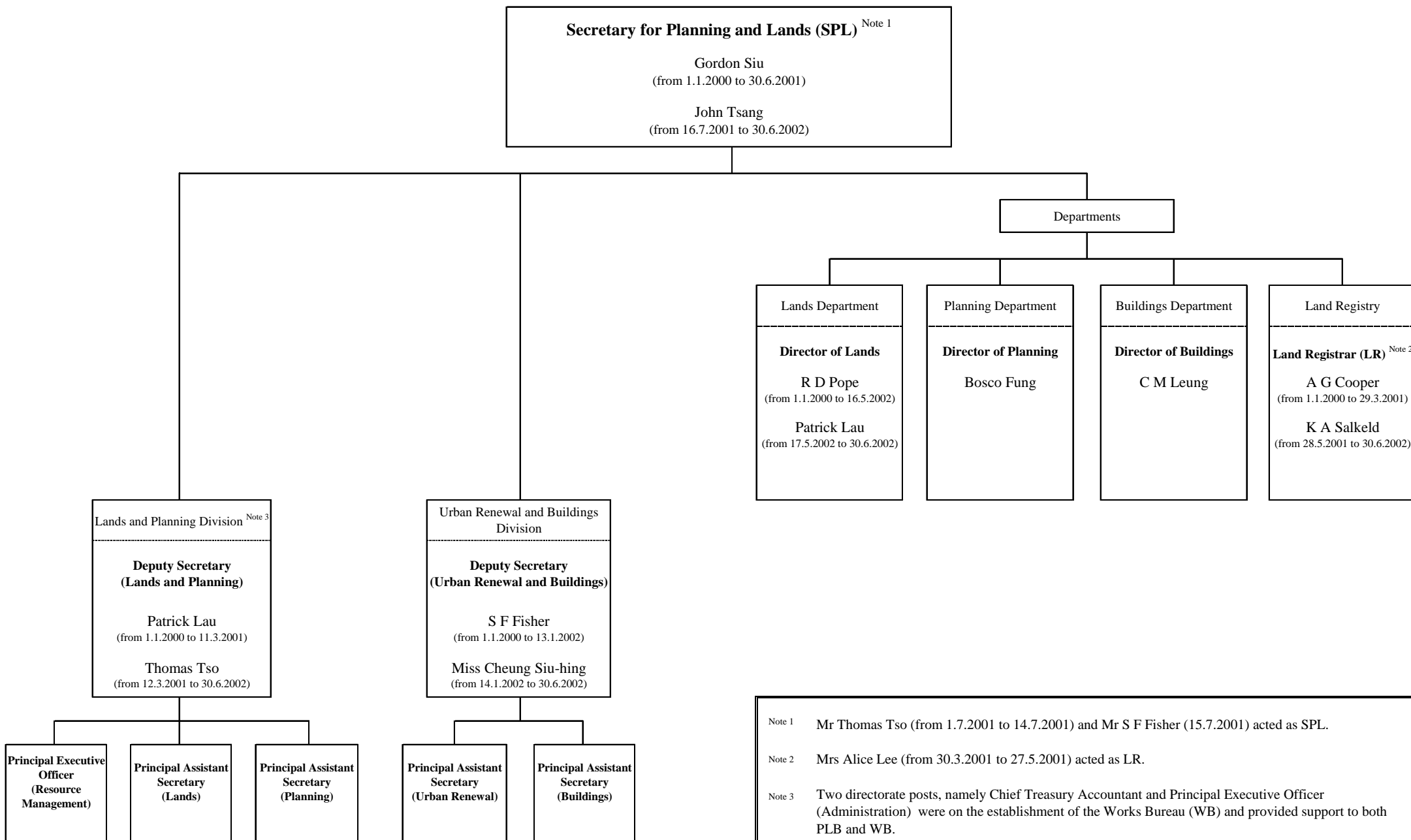


**Organisation Structure of former Planning, Environment and Lands Bureau (PELB)
(from 26.8.1999 to 31.12.1999)**



Note Two directorate posts, namely Chief Treasury Accountant and Principal Executive Officer (Administration) were on the establishment of the Works Bureau (WB) and provided support to both PELB and WB.

**Organisation Structure of former Planning and Lands Bureau (PLB)
(from 1.1.2000 to 30.6.2002)**

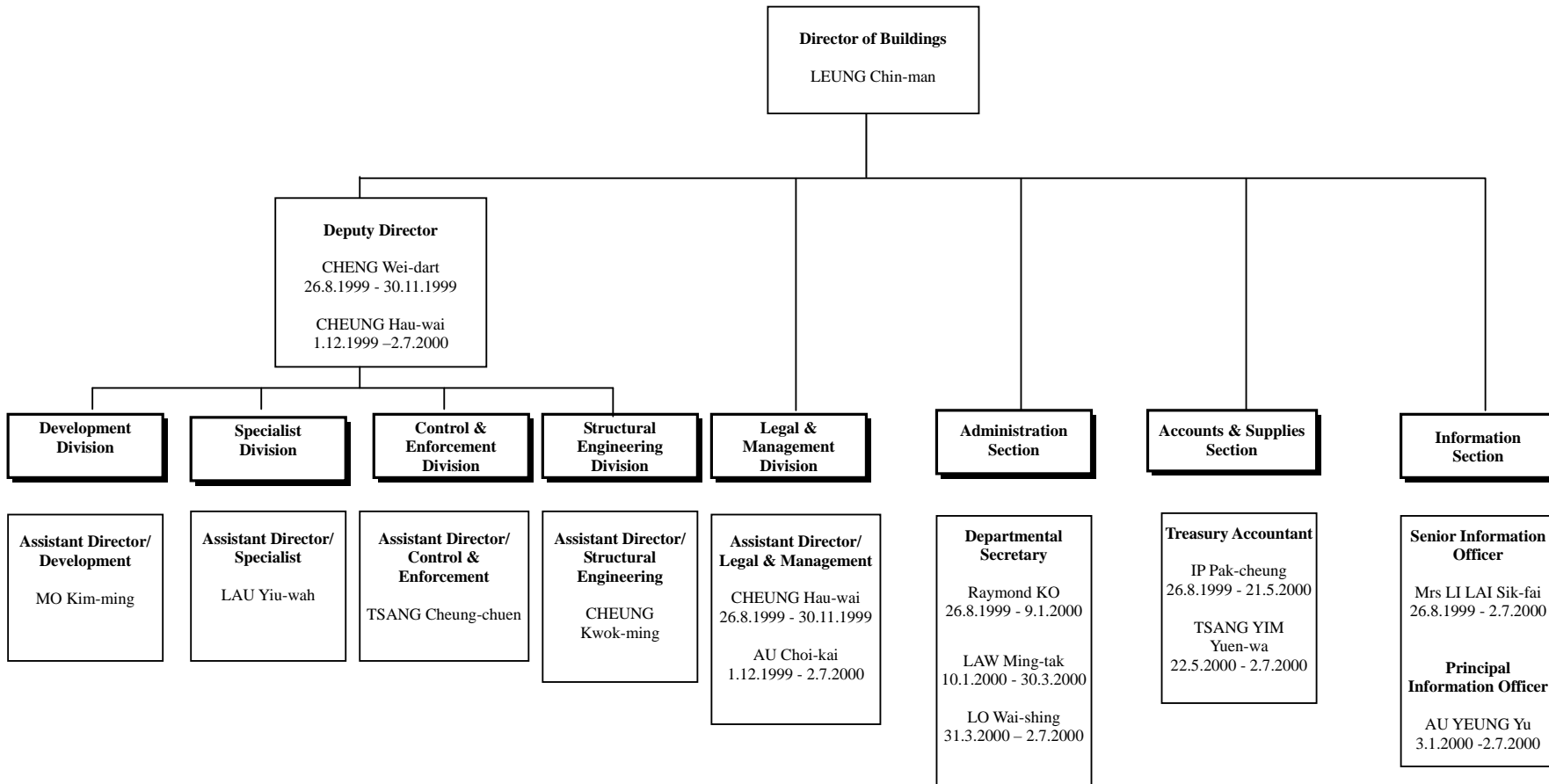


Note 1 Mr Thomas Tso (from 1.7.2001 to 14.7.2001) and Mr S F Fisher (15.7.2001) acted as SPL.

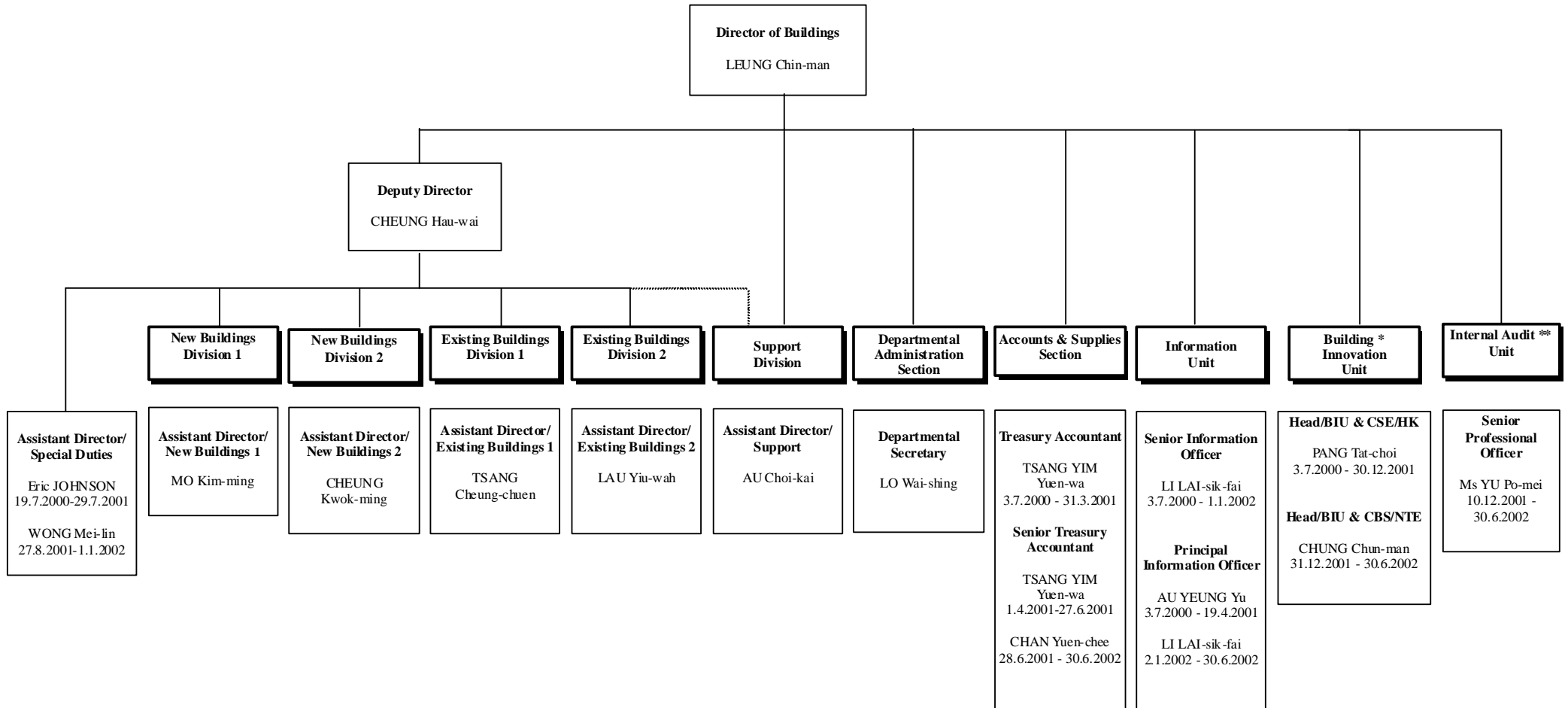
Note 2 Mrs Alice Lee (from 30.3.2001 to 27.5.2001) acted as LR.

Note 3 Two directorate posts, namely Chief Treasury Accountant and Principal Executive Officer (Administration) were on the establishment of the Works Bureau (WB) and provided support to both PLB and WB.

**Organisation Chart of the Buildings Department
(26.8.1999 – 2.7.2000)**



Organisation Chart of the Buildings Department (3.7.2000 to 30.6.2002)



* The BIU was headed by CSE and CBS on a "Part-time" basis

** The IAU was established on 15.11.2001