

Press Release

Land Registry statistics for October 2009

The Land Registry today (November 3) released its statistics for October 2009.

Land Registration

- The number of sale and purchase agreements for all building units received for registration in October 2009 was 11,112 (-23% compared with September 2009 but +83.5% compared with October 2008)
- The 12-month moving average for October 2009 was 10,074 (this was 4.4% above the 12-month moving average for September 2009 but 12.3% below that for October 2008)
- The total consideration of sale & purchase agreements in October 2009 was \$45.5 billion (-32.2% compared with September 2009 but +140% compared with October 2008)
- Among the sale & purchase agreements, 9,300 were for residential units (-24.3% compared with September 2009 but +97.1% compared with October 2008)
- The total consideration for these sale & purchase agreements was \$36.3 billion (-35.3% compared with September 2009 but +123.2% compared with October 2008)

Sales of residential units refer to the sale and purchase agreements with payment of stamp duty. These statistics do not include sales of units under the Home Ownership Scheme, the Private Sector Participation Scheme and the Tenants Purchase Scheme except those after payment of premium.

Figures on sale and purchase agreements received for the past 12 months, the year-on-year rate of change and breakdown figures on residential sales are also released.

As deeds may not be lodged with the Land Registry until up to 30 days after the transaction, these statistics generally relate to land transactions in the previous month.

Land Search

- The number of searches of land registers made by members of the public in October 2009 was 462,122 (-1.3% compared with September 2009 but +21.7% compared with October 2008)

The statistics cover searches made at the counter, through the self-service terminals and the IRIS Online Services.

The above figures and other related statistics for October 2009, together with corresponding statistics for September 2009 and October 2008, are provided.

THE LAND REGISTRY
Consolidated Monthly Statistics in respect of deeds received
for registration in the Land Registry

Table 1

Month : October 2009

Item	Nature of Deeds	Number of Deeds received for registration			Consideration (nearest \$ million)		
		Urban	New Territories	Total	Urban	New Territories	Total
1.	Agreements for Sale and Purchase of Building Units	5,484 (6,153)	5,628 (5,948)	11,112 (12,101)	32,198	13,254	45,452
2.	Agreements for Sale and Purchase of Land	12	187	199	723	748	1,471
	Sub-total (1) + (2)	5,496	5,815	11,311	32,921	14,002	46,923
3.	Assignments of Building Units	7,535 (8,718)	7,020 (7,496)	14,555 (16,214)	34,293	15,666	49,959
4.	Assignments of Land	14	626	640	776	1,233	2,009
	Sub-total (3) + (4)	7,549	7,646	15,195	35,069	16,899	51,968
5.	Building Mortgages/Building Legal Charges	0	15	15			
6.	Other Mortgages/Legal Charges	6,223	6,345	12,568			
	Sub-total (5) + (6)	6,223	6,360	12,583			
7.	Receipts/Discharges/Releases	6,708	7,096	13,804			
8.	Leases/Tenancy Agreements	270	143	413			
9.	Exclusion Orders	0	0	0			
10.	Others	6,105	5,146	11,251			
	Total	32,351	32,206	64,557			

Note : Figures in brackets denote the number of units involved.

THE LAND REGISTRY
Comparison of Monthly Statistics

Table 2

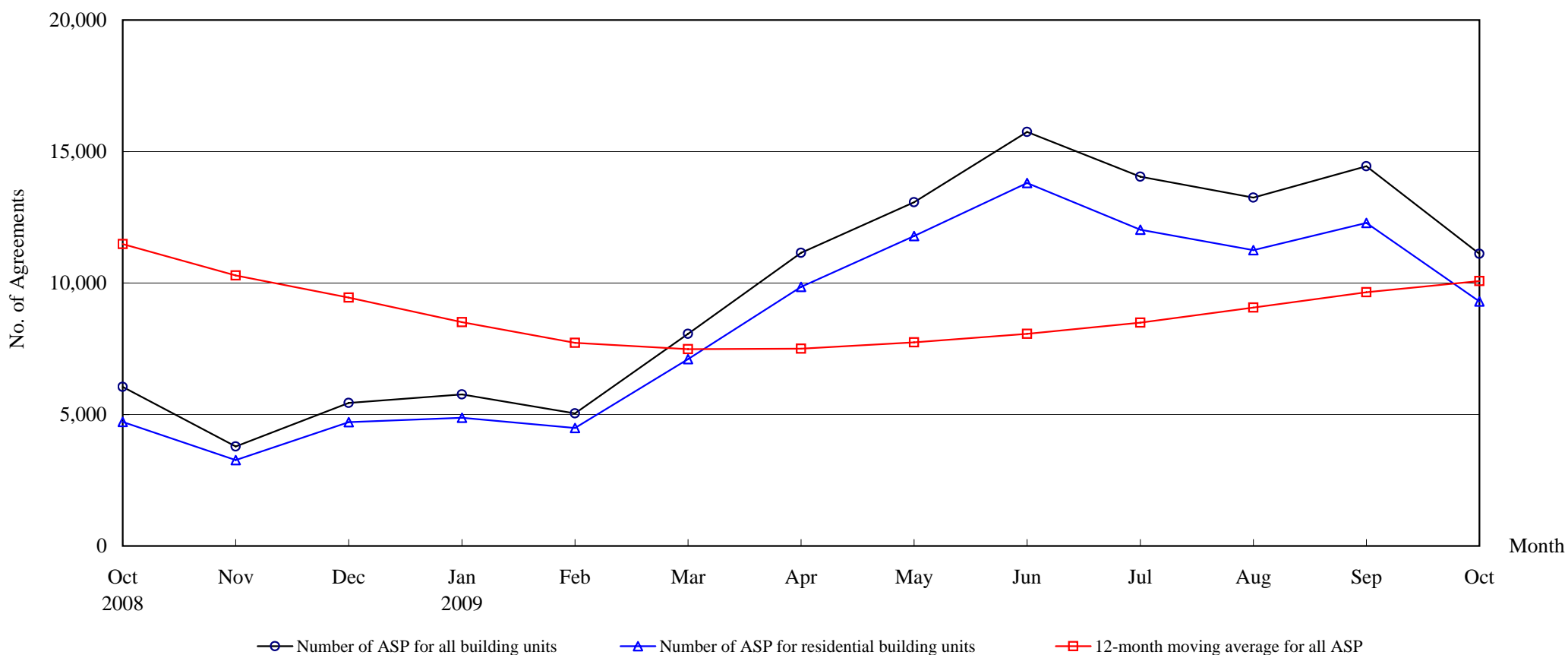
Month : October 2009

Item	2009 October	2009 September	2008 October	October 2009							
				Increase (+) or Decrease (-) as compared with							
				September 2009		October 2008					
	No. or	Consideration	Percentage	No. or	Consideration	Percentage					
1. Agreements for Sale and Purchase of Building Units											
(a) No.	11,112	14,437	6,054	-	3,325	-	23.0	+	5,058	+	83.5
(b) Consideration	45,452	67,049	18,937	-	21,597	-	32.2	+	26,515	+	140.0
2. Agreements for Sale and Purchase of Land											
(a) No.	199	220	131	-	21	-	9.5	+	68	+	51.9
(b) Consideration	1,471	4,111	916	-	2,640	-	64.2	+	555	+	60.6
Sub-total of (1) + (2)											
(a) No.	11,311	14,657	6,185	-	3,346	-	22.8	+	5,126	+	82.9
(b) Consideration	46,923	71,160	19,853	-	24,237	-	34.1	+	27,070	+	136.4
3. Assignments of Building Units											
(a) No.	14,555	15,205	9,545	-	650	-	4.3	+	5,010	+	52.5
(b) Consideration	49,959	50,890	29,890	-	931	-	1.8	+	20,069	+	67.1
4. Assignments of Land											
(a) No.	640	592	534	+	48	+	8.1	+	106	+	19.9
(b) Consideration	2,009	3,437	3,974	-	1,428	-	41.5	-	1,965	-	49.4
Sub-total of (3) + (4)											
(a) No.	15,195	15,797	10,079	-	602	-	3.8	+	5,116	+	50.8
(b) Consideration	51,968	54,327	33,864	-	2,359	-	4.3	+	18,104	+	53.5
5. No. of Building Mortgages/Building Legal Charges	15	2	11	+	13	+	650.0	+	4	+	36.4
6. No. of Other Mortgages/Legal Charges	12,568	12,983	8,822	-	415	-	3.2	+	3,746	+	42.5
Sub-total of (5) + (6)	12,583	12,985	8,833	-	402	-	3.1	+	3,750	+	42.5
7. No. of Receipts/Discharges/Releases	13,804	14,835	10,950	-	1,031	-	6.9	+	2,854	+	26.1
8. No. of Public Search	462,122	468,440	379,569	-	6,318	-	1.3	+	82,553	+	21.7

Note : Consideration rounded to the nearest million Hong Kong dollars.

The Land Registry
Chart showing the number of Sale and Purchase Agreements of
building units from October 2008 to October 2009

Table 3



Number of Sale and Purchase Agreements of building units

Year	2008			2009									
Month	Oct	Nov	Dec	Jan	Feb	Mar	Apr	May	Jun	Jul	Aug	Sep	Oct
Number of ASP for all building units	6,054	3,786	5,437	5,759	5,043	8,062	11,148	13,067	15,747	14,039	13,245	14,437	11,112
Number of ASP for residential building units ⁽¹⁾	4,719	3,264	4,706	4,875	4,487	7,102	9,856	11,788	13,805	12,023	11,250	12,285	9,300
12-month moving average for all ASP ⁽²⁾	11,481	10,288	9,442	8,506	7,728	7,483	7,500	7,744	8,067	8,493	9,063	9,652	10,074

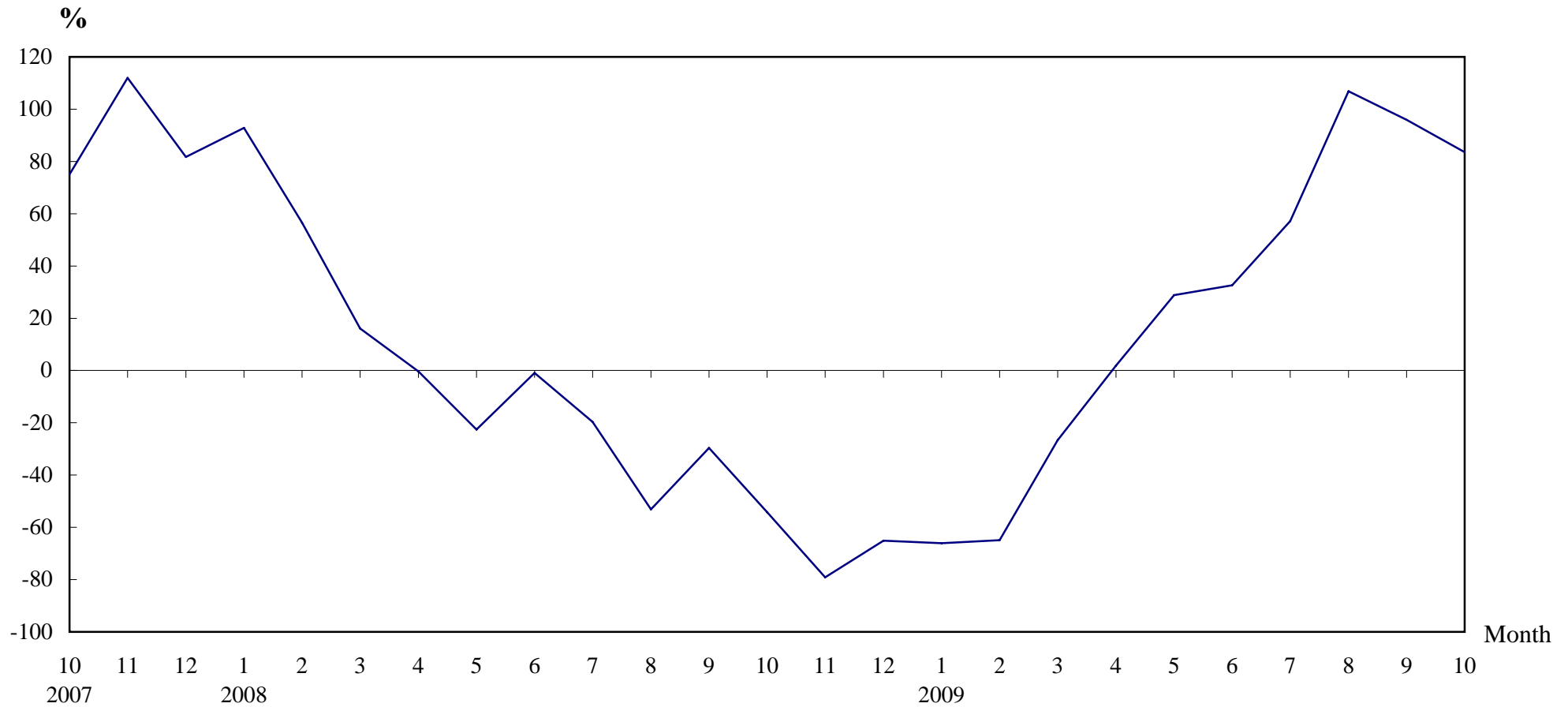
Note : (1) Sales of residential units refer to sale and purchase agreements with payment of stamp duty. These statistics do not include sales of units under the Home Ownership Scheme, the Private Sector Participation Scheme and the Tenants Purchase Scheme except those after payment of premium.

(2) 12-month moving average is calculated by dividing the sum of the figures of the previous 12 months by 12.

The Land Registry

Table 4

Year-on-year Rate of Change in the Number of Sale and Purchase Agreements



Number of Sale and Purchase Agreements of residential and non-residential building units

Year/Month	Jan	Feb	Mar	Apr	May	Jun	Jul	Aug	Sep	Oct	Nov	Dec
2007	8,807	9,188	9,470	10,973	13,090	11,979	11,121	13,664	10,475	13,227	18,105	15,592
2008	16,984	14,384	10,993	10,945	10,138	11,876	8,930	6,402	7,369	6,054	3,786	5,437
2009	5,759	5,043	8,062	11,148	13,067	15,747	14,039	13,245	14,437	11,112		

Table 5**THE LAND REGISTRY****Number of Sale and Purchase Agreements of residential building units and total consideration
from October 2008 to October 2009**

Year / Month		Range of Consideration (\$ million)												Total	
		Less than 1		1 to less than 2		2 to less than 3		3 to less than 5		5 to less than 10		10 or over			
		No.	%	No.	%	No.	%	No.	%	No.	%	No.	%	No.	Consideration (\$ million)
2008	10	612	13	1,937	41	933	20	617	13	471	10	149	3	4,719	16,279
	11	542	17	1,387	42	568	17	444	14	224	7	99	3	3,264	9,007
	12	616	13	1,960	42	787	17	539	11	477	10	327	7	4,706	17,662
2009	1	643	13	1,928	40	995	20	748	15	303	6	258	5	4,875	16,124
	2	650	14	1,842	41	852	19	644	14	326	7	173	4	4,487	13,622
	3	954	13	2,904	41	1,227	17	1,094	15	454	6	469	7	7,102	25,448
	4	1,045	11	3,605	37	1,914	19	2,154	22	720	7	418	4	9,856	31,580
	5	1,085	9	4,702	40	2,378	20	1,938	16	1,099	9	586	5	11,788	39,423
	6	1,197	9	4,636	34	2,472	18	3,342	24	1,477	11	681	5	13,805	49,713
	7	1,067	9	4,467	37	2,317	19	2,338	19	1,199	10	635	5	12,023	43,567
	8	893	8	3,796	34	1,880	17	2,709	24	1,472	13	500	4	11,250	40,987
	9	922	8	4,523	37	2,361	19	2,142	17	986	8	1,351	11	12,285	56,163
	10	755	8	3,721	40	1,849	20	1,573	17	790	8	612	7	9,300	36,334

Note : Figures in percentage for individual items may not add up to 100% due to rounding.

THE LAND REGISTRY

Monthly Statistics in respect of Sale & Purchase Agreements
of building units received for registration on regional basis

Month: October 2009

Item	District	Sale and Purchase Agreements of Building Units	
		No. of Transactions	Consideration (nearest \$million)
1.	Hong Kong	2,186	16,919
2.	Kowloon	3,298	15,279
3.	Islands	269	914
4.	North	329	579
5.	Sai Kung	658	1,918
6.	Shatin	931	2,867
7.	Tai Po	407	879
8.	Tsuen Wan	1,298	2,905
9.	Tuen Mun	825	1,222
10.	Yuen Long	911	1,970
	Total	11,112	45,452