

Press Release

Land Registry statistics for December 2009

The Land Registry today (January 5) released its statistics for December 2009.

Land Registration

- The number of sale and purchase agreements for all building units received for registration in December 2009 was 11,112 (-0.7% compared with November 2009 but +104.4% compared with December 2008)
- The 12-month moving average for December 2009 was 11,164 (this was 4.4% above the 12-month moving average for November 2009 and 18.2% above that for December 2008)
- The total consideration of sale & purchase agreements in December 2009 was \$42.9 billion (-10.5% compared with November 2009 but +108.9% compared with December 2008)
- Among the sale & purchase agreements, 9,108 were for residential units (-1.1% compared with November 2009 but +93.5% compared with December 2008)
- The total consideration for these sale & purchase agreements was \$34.7 billion (-9% compared with November 2009 but +96.6% compared with December 2008)

Sales of residential units refer to the sale and purchase agreements with payment of stamp duty. These statistics do not include sales of units under the Home Ownership Scheme, the Private Sector Participation Scheme and the Tenants Purchase Scheme except those after payment of premium.

Figures on sale and purchase agreements received for the past 12 months, the year-on-year rate of change and breakdown figures on residential sales are also released.

As deeds may not be lodged with the Land Registry until up to 30 days after the transaction, these statistics generally relate to land transactions in the previous month.

Land Search

- The number of searches of land registers made by members of the public in December 2009 was 419,529 (-5.6% compared with November 2009 but +42.6% compared with December 2008)

The statistics cover searches made at the counter, through the self-service terminals and the IRIS Online Services.

The above figures and other related statistics for December 2009, together with corresponding statistics for November 2009 and December 2008, are provided.

THE LAND REGISTRY
Consolidated Monthly Statistics in respect of deeds received
for registration in the Land Registry

Table 1

Month : December 2009

Item	Nature of Deeds	Number of Deeds received for registration			Consideration (nearest \$ million)		
		Urban	New Territories	Total	Urban	New Territories	Total
1.	Agreements for Sale and Purchase of Building Units	5,369 (5,997)	5,743 (6,117)	11,112 (12,114)	27,278	15,577	42,855
2.	Agreements for Sale and Purchase of Land	17	205	222	3,557	1,054	4,611
	Sub-total (1) + (2)	5,386	5,948	11,334	30,835	16,631	47,466
3.	Assignments of Building Units	7,862 (8,722)	7,345 (7,750)	15,207 (16,472)	36,826	17,149	53,975
4.	Assignments of Land	21	595	616	1,526	1,033	2,559
	Sub-total (3) + (4)	7,883	7,940	15,823	38,352	18,182	56,534
5.	Building Mortgages/Building Legal Charges	0	17	17			
6.	Other Mortgages/Legal Charges	6,704	6,769	13,473			
	Sub-total (5) + (6)	6,704	6,786	13,490			
7.	Receipts/Discharges/Releases	6,939	7,739	14,678			
8.	Leases/Tenancy Agreements	228	142	370			
9.	Exclusion Orders	0	0	0			
10.	Others	6,449	4,195	10,644			
	Total	33,589	32,750	66,339			

Note : Figures in brackets denote the number of units involved.

THE LAND REGISTRY
Comparison of Monthly Statistics

Table 2

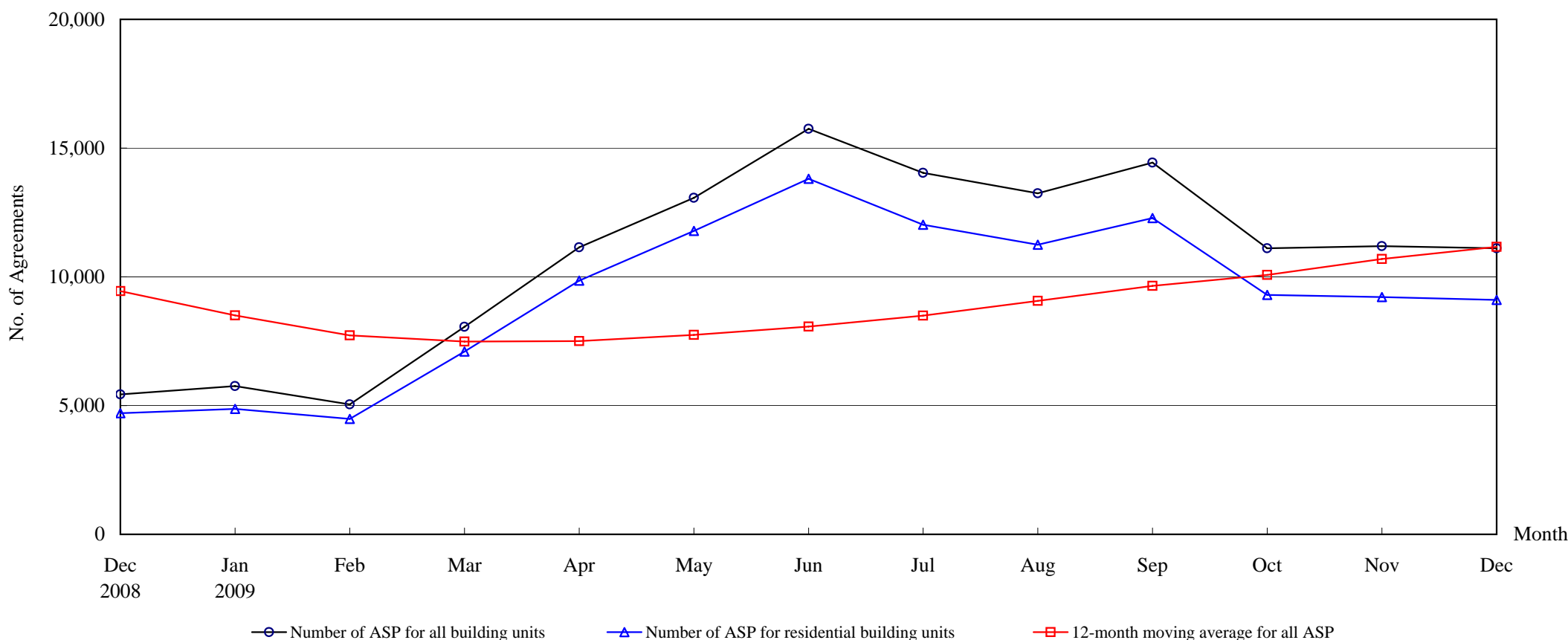
Month : December 2009

Item	2009 December	2009 November	2008 December	December 2009			
				Increase (+) or Decrease (-) as compared with			
				November 2009		December 2008	
No. or Consideration	Percentage	No. or Consideration	Percentage				
1. Agreements for Sale and Purchase of Building Units							
(a) No.	11,112	11,191	5,437	- 79	- 0.7	+ 5,675	+ 104.4
(b) Consideration	42,855	47,905	20,516	- 5,050	- 10.5	+ 22,339	+ 108.9
2. Agreements for Sale and Purchase of Land							
(a) No.	222	248	104	- 26	- 10.5	+ 118	+ 113.5
(b) Consideration	4,611	2,574	684	+ 2,037	+ 79.1	+ 3,927	+ 574.1
Sub-total of (1) + (2)							
(a) No.	11,334	11,439	5,541	- 105	- 0.9	+ 5,793	+ 104.5
(b) Consideration	47,466	50,479	21,200	- 3,013	- 6.0	+ 26,266	+ 123.9
3. Assignments of Building Units							
(a) No.	15,207	14,420	7,049	+ 787	+ 5.5	+ 8,158	+ 115.7
(b) Consideration	53,975	56,065	20,488	- 2,090	- 3.7	+ 33,487	+ 163.4
4. Assignments of Land							
(a) No.	616	516	512	+ 100	+ 19.4	+ 104	+ 20.3
(b) Consideration	2,559	2,856	1,130	- 297	- 10.4	+ 1,429	+ 126.5
Sub-total of (3) + (4)							
(a) No.	15,823	14,936	7,561	+ 887	+ 5.9	+ 8,262	+ 109.3
(b) Consideration	56,534	58,921	21,618	- 2,387	- 4.1	+ 34,916	+ 161.5
5. No. of Building Mortgages/Building Legal Charges	17	9	11	+ 8	+ 88.9	+ 6	+ 54.5
6. No. of Other Mortgages/Legal Charges	13,473	12,660	5,841	+ 813	+ 6.4	+ 7,632	+ 130.7
Sub-total of (5) + (6)	13,490	12,669	5,852	+ 821	+ 6.5	+ 7,638	+ 130.5
7. No. of Receipts/Discharges/Releases	14,678	15,256	8,357	- 578	- 3.8	+ 6,321	+ 75.6
8. No. of Public Search	419,529	444,355	294,271	- 24,826	- 5.6	+ 125,258	+ 42.6

Note : Consideration rounded to the nearest million Hong Kong dollars.

The Land Registry
Chart showing the number of Sale and Purchase Agreements of
building units from December 2008 to December 2009

Table 3



Number of Sale and Purchase Agreements of building units

Year	2008		2009										
Month	Dec	Jan	Feb	Mar	Apr	May	Jun	Jul	Aug	Sep	Oct	Nov	Dec
Number of ASP for all building units	5,437	5,759	5,043	8,062	11,148	13,067	15,747	14,039	13,245	14,437	11,112	11,191	11,112
Number of ASP for residential building units ⁽¹⁾	4,706	4,875	4,487	7,102	9,856	11,788	13,805	12,023	11,250	12,285	9,300	9,213	9,108
12-month moving average for all ASP ⁽²⁾	9,442	8,506	7,728	7,483	7,500	7,744	8,067	8,493	9,063	9,652	10,074	10,691	11,164

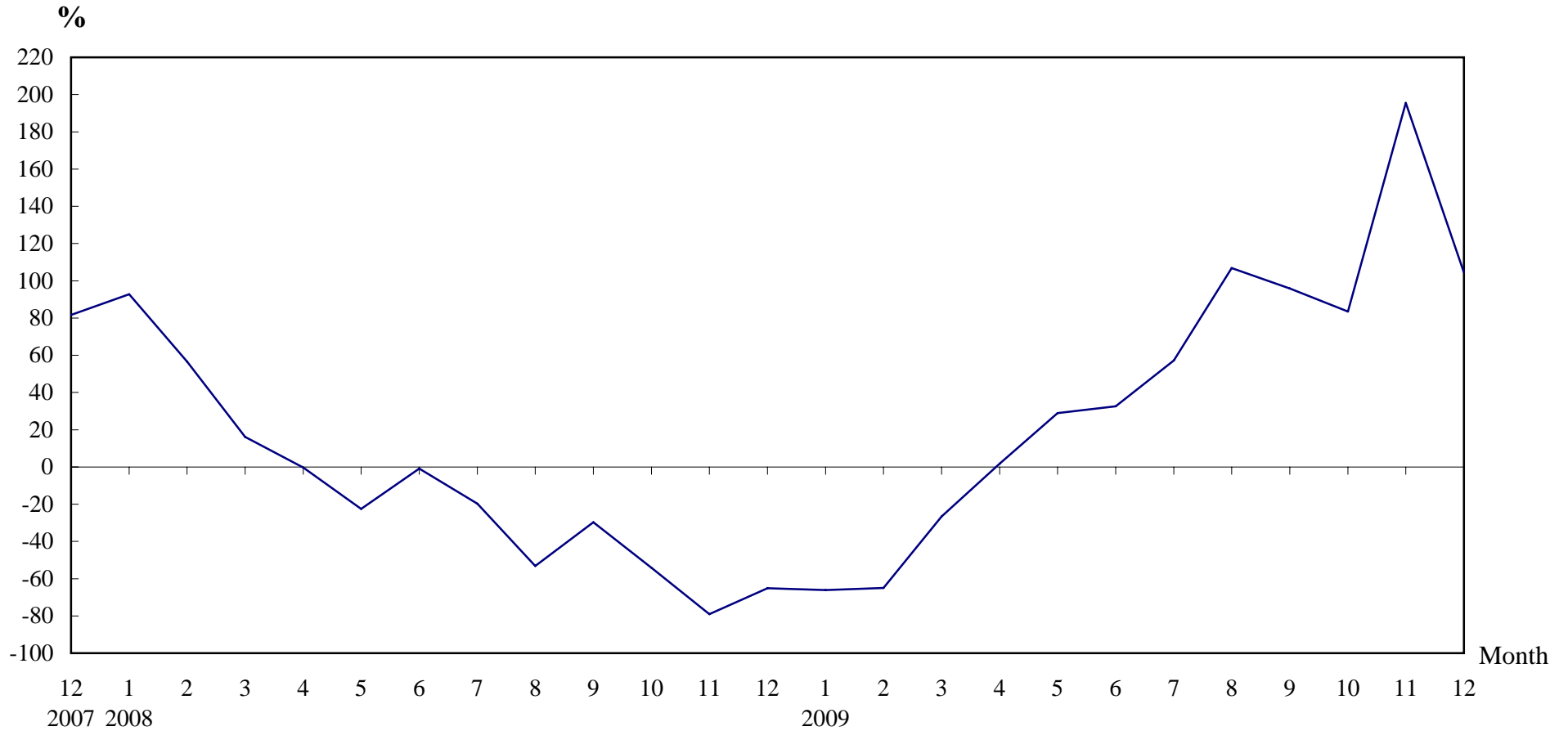
Note : (1) Sales of residential units refer to sale and purchase agreements with payment of stamp duty. These statistics do not include sales of units under the Home Ownership Scheme, the Private Sector Participation Scheme and the Tenants Purchase Scheme except those after payment of premium.

(2) 12-month moving average is calculated by dividing the sum of the figures of the previous 12 months by 12.

The Land Registry

Table 4

Year-on-year Rate of Change in the Number of Sale and Purchase Agreements



Number of Sale and Purchase Agreements of residential and non-residential building units

Year/Month	Jan	Feb	Mar	Apr	May	Jun	Jul	Aug	Sep	Oct	Nov	Dec
2007	8,807	9,188	9,470	10,973	13,090	11,979	11,121	13,664	10,475	13,227	18,105	15,592
2008	16,984	14,384	10,993	10,945	10,138	11,876	8,930	6,402	7,369	6,054	3,786	5,437
2009	5,759	5,043	8,062	11,148	13,067	15,747	14,039	13,245	14,437	11,112	11,191	11,112

Table 5**THE LAND REGISTRY****Number of Sale and Purchase Agreements of residential building units and total consideration
from December 2008 to December 2009**

Year / Month		Range of Consideration (\$ million)												Total	
		Less than 1		1 to less than 2		2 to less than 3		3 to less than 5		5 to less than 10		10 or over			
		No.	%	No.	%	No.	%	No.	%	No.	%	No.	%	No.	Consideration (\$ million)
2008	12	616	13	1,960	42	787	17	539	11	477	10	327	7	4,706	17,662
2009	1	643	13	1,928	40	995	20	748	15	303	6	258	5	4,875	16,124
	2	650	14	1,842	41	852	19	644	14	326	7	173	4	4,487	13,622
	3	954	13	2,904	41	1,227	17	1,094	15	454	6	469	7	7,102	25,448
	4	1,045	11	3,605	37	1,914	19	2,154	22	720	7	418	4	9,856	31,580
	5	1,085	9	4,702	40	2,378	20	1,938	16	1,099	9	586	5	11,788	39,423
	6	1,197	9	4,636	34	2,472	18	3,342	24	1,477	11	681	5	13,805	49,713
	7	1,067	9	4,467	37	2,317	19	2,338	19	1,199	10	635	5	12,023	43,567
	8	893	8	3,796	34	1,880	17	2,709	24	1,472	13	500	4	11,250	40,987
	9	922	8	4,523	37	2,361	19	2,142	17	986	8	1,351	11	12,285	56,163
	10	755	8	3,721	40	1,849	20	1,573	17	790	8	612	7	9,300	36,334
	11	708	8	3,660	40	1,855	20	1,581	17	814	9	595	6	9,213	38,154
	12	684	8	3,301	36	1,736	19	1,905	21	1,059	12	423	5	9,108	34,725

Note : Figures in percentage for individual items may not add up to 100% due to rounding.

THE LAND REGISTRY

Monthly Statistics in respect of Sale & Purchase Agreements of building units received for registration on regional basis

Month: December 2009

Item	District	Sale and Purchase Agreements of Building Units	
		No. of Transactions	Consideration (nearest \$million)
1.	Hong Kong	2,295	16,087
2.	Kowloon	3,074	11,191
3.	Islands	251	741
4.	North	359	681
5.	Sai Kung	1,268	5,205
6.	Shatin	961	2,970
7.	Tai Po	426	1,013
8.	Tsuen Wan	1,097	2,590
9.	Tuen Mun	660	999
10.	Yuen Long	721	1,378
	Total	11,112	42,855