

Press Release

Land Registry statistics for August

The Land Registry today (September 2) released its statistics for August 2011.

Land registration

- The number of sale and purchase agreements for all building units received for registration in August was 7,348 (+0.8% compared with July but -56.6% compared with August 2010)
- The 12-month moving average for August was 11,552 (6.5% below the 12-month moving average for July and 11.7% below that for August 2010)
- The total consideration for sale and purchase agreements in August was \$40.8 billion (-3.6% compared with July and -49.1% compared with August 2010)
- Among the sale and purchase agreements, 5,439 were for residential units (+3.5% compared with July but -63% compared with August 2010)
- The total consideration for sale and purchase agreements in respect of residential units was \$31.8 billion (+0.1% compared with July but -54.1% compared with August 2010)

The sale of residential units refers to sale and purchase agreements with payment of stamp duty. These statistics do not include the sale of units under the Home Ownership Scheme, the Private Sector Participation Scheme and the Tenants Purchase Scheme except those after payment of premium.

Figures on sale and purchase agreements received for the past 12 months, the year-on-year rate of change and breakdown figures on residential sales are also released.

As deeds may not be lodged with the Land Registry until up to 30 days after the transaction, these statistics generally relate to land transactions in the previous month.

Land search

- The number of searches of land registers made by the public in August was 429,864 (+3.4% compared with July but -20.5% compared with August 2010)

The statistics cover searches made at the counter, through the self-service terminals and via the Integrated Registration Information System Online Services.

THE LAND REGISTRY
Consolidated Monthly Statistics in respect of deeds received
for registration in the Land Registry

Table 1

Month : August 2011

Item	Nature of Deeds	Number of Deeds received for registration			Consideration (nearest \$ million)		
		Urban	New Territories	Total	Urban	New Territories	Total
1.	Agreements for Sale and Purchase of Building Units	3,832 (4,355)	3,516 (3,764)	7,348 (8,119)	28,654	12,191	40,845
2.	Agreements for Sale and Purchase of Land	10	234	244	878	931	1,809
	Sub-total (1) + (2)	3,842	3,750	7,592	29,532	13,122	42,654
3.	Assignments of Building Units	6,560 (7,292)	6,323 (6,830)	12,883 (14,122)	61,343	19,235	80,578
4.	Assignments of Land	12	767	779	798	1,423	2,221
	Sub-total (3) + (4)	6,572	7,090	13,662	62,141	20,658	82,799
5.	Building Mortgages/Building Legal Charges	0	24	24			
6.	Other Mortgages/Legal Charges	5,152	5,654	10,806			
	Sub-total (5) + (6)	5,152	5,678	10,830			
7.	Receipts/Discharges/Releases	6,177	7,590	13,767			
8.	Leases/Tenancy Agreements	357	170	527			
9.	Exclusion Orders	0	0	0			
10.	Others	4,783	4,163	8,946			
	Total	26,883	28,441	55,324			

Note : Figures in brackets denote the number of units involved.

THE LAND REGISTRY
Comparison of Monthly Statistics

Table 2

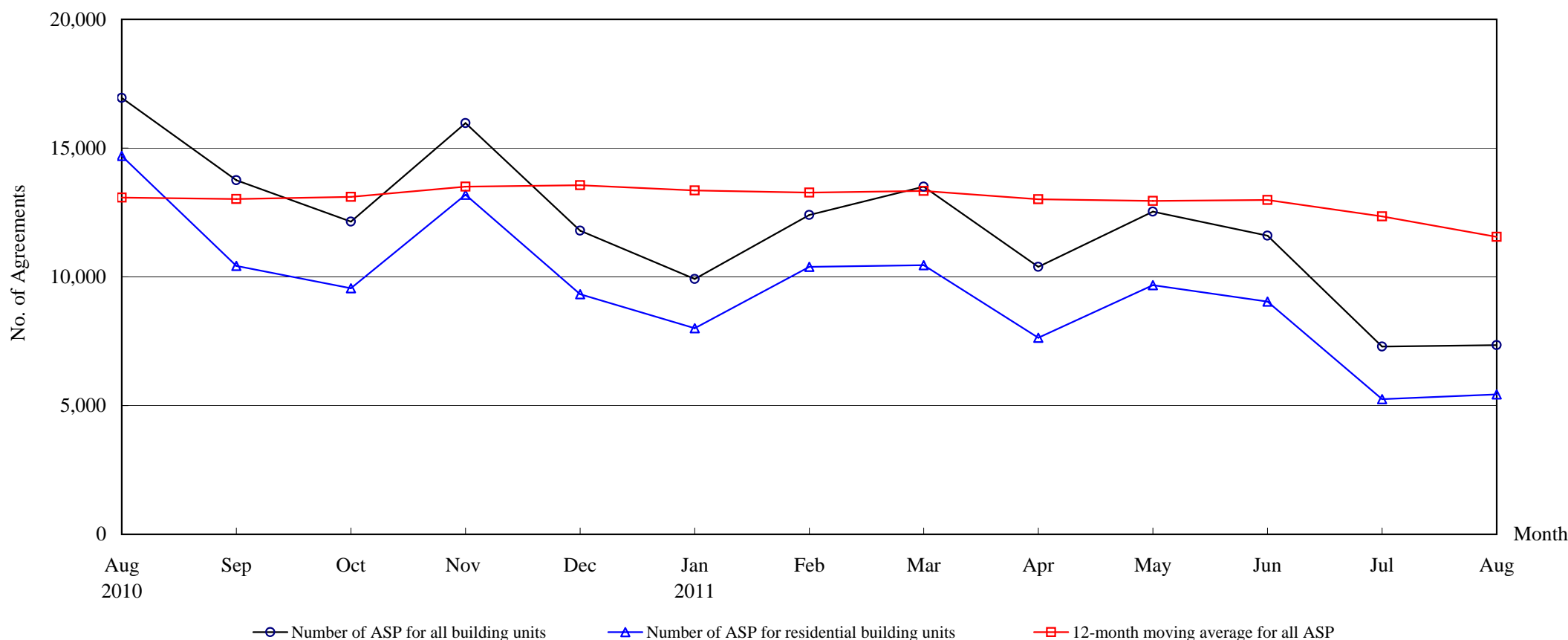
Month : August 2011

Item	2011 August	2011 July	2010 August	August 2011 Increase (+) or Decrease (-) as compared with			
				July 2011		August 2010	
				No. or Consideration	Percentage	No. or Consideration	Percentage
1. Agreements for Sale and Purchase of Building Units							
(a) No.	7,348	7,291	16,946	+ 57	+ 0.8	- 9,598	- 56.6
(b) Consideration	40,845	42,354	80,237	- 1,509	- 3.6	- 39,392	- 49.1
2. Agreements for Sale and Purchase of Land							
(a) No.	244	218	211	+ 26	+ 11.9	+ 33	+ 15.6
(b) Consideration	1,809	2,105	4,686	- 296	- 14.1	- 2,877	- 61.4
Sub-total of (1) + (2)							
(a) No.	7,592	7,509	17,157	+ 83	+ 1.1	- 9,565	- 55.7
(b) Consideration	42,654	44,459	84,923	- 1,805	- 4.1	- 42,269	- 49.8
3. Assignments of Building Units							
(a) No.	12,883	12,259	14,663	+ 624	+ 5.1	- 1,780	- 12.1
(b) Consideration	80,578	60,511	53,354	+ 20,067	+ 33.2	+ 27,224	+ 51.0
4. Assignments of Land							
(a) No.	779	726	504	+ 53	+ 7.3	+ 275	+ 54.6
(b) Consideration	2,221	3,939	3,308	- 1,718	- 43.6	- 1,087	- 32.9
Sub-total of (3) + (4)							
(a) No.	13,662	12,985	15,167	+ 677	+ 5.2	- 1,505	- 9.9
(b) Consideration	82,799	64,450	56,662	+ 18,349	+ 28.5	+ 26,137	+ 46.1
5. No. of Building Mortgages/Building Legal Charges	24	11	7	+ 13	+ 118.2	+ 17	+ 242.9
6. No. of Other Mortgages/Legal Charges	10,806	11,011	14,020	- 205	- 1.9	- 3,214	- 22.9
Sub-total of (5) + (6)	10,830	11,022	14,027	- 192	- 1.7	- 3,197	- 22.8
7. No. of Receipts/Discharges/Releases	13,767	12,679	14,491	+ 1,088	+ 8.6	- 724	- 5.0
8. No. of Public Search	429,864	415,565	541,022	+ 14,299	+ 3.4	- 111,158	- 20.5

Note : Consideration rounded to the nearest million Hong Kong dollars.

The Land Registry
Chart showing the number of Sale and Purchase Agreements of
building units from August 2010 to August 2011

Table 3



Number of Sale and Purchase Agreements of building units

Year	2010					2011							
Month	Aug	Sep	Oct	Nov	Dec	Jan	Feb	Mar	Apr	May	Jun	Jul	Aug
Number of ASP for all building units	16,946	13,749	12,140	15,967	11,790	9,917	12,401	13,501	10,386	12,536	11,601	7,291	7,348
Number of ASP for residential building units ⁽¹⁾	14,699	10,424	9,552	13,189	9,328	8,002	10,390	10,456	7,635	9,681	9,043	5,254	5,439
12-month moving average for all ASP ⁽²⁾	13,079	13,021	13,107	13,505	13,562	13,356	13,271	13,337	13,011	12,946	12,985	12,352	11,552

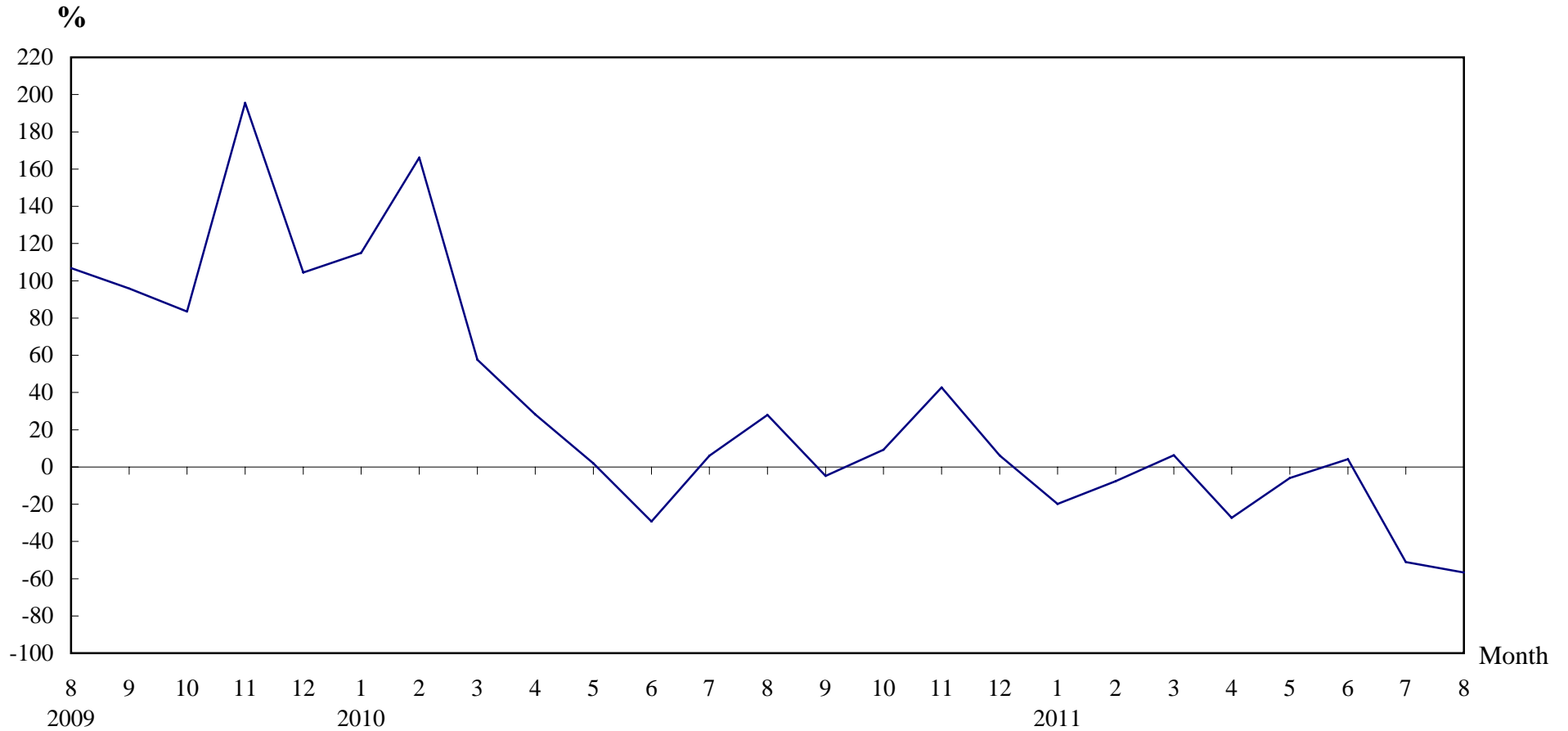
Note : (1) Sales of residential units refer to sale and purchase agreements with payment of stamp duty. These statistics do not include sales of units under the Home Ownership Scheme, the Private Sector Participation Scheme and the Tenants Purchase Scheme except those after payment of premium.

(2) 12-month moving average is calculated by dividing the sum of the figures of the previous 12 months by 12.

The Land Registry

Table 4

Year-on-year Rate of Change in the Number of Sale and Purchase Agreements



Number of Sale and Purchase Agreements of residential and non-residential building units

Year/Month	Jan	Feb	Mar	Apr	May	Jun	Jul	Aug	Sep	Oct	Nov	Dec
2009	5,759	5,043	8,062	11,148	13,067	15,747	14,039	13,245	14,437	11,112	11,191	11,112
2010	12,380	13,423	12,706	14,300	13,325	11,128	14,885	16,946	13,749	12,140	15,967	11,790
2011	9,917	12,401	13,501	10,386	12,536	11,601	7,291	7,348				

Table 5**THE LAND REGISTRY****Number of Sale and Purchase Agreements of residential building units and total consideration
from August 2010 to August 2011**

Year / Month		Range of Consideration (\$ million)												Total	
		Less than 1		1 to less than 2		2 to less than 3		3 to less than 5		5 to less than 10		10 or over			
		No.	%	No.	%	No.	%	No.	%	No.	%	No.	%	No.	Consideration (\$ million)
2010	8	389	3	4,731	32	3,444	23	3,190	22	1,608	11	1,337	9	14,699	69,224
	9	415	4	3,524	34	2,584	25	2,158	21	1,101	11	642	6	10,424	41,184
	10	290	3	2,709	28	2,090	22	1,904	20	1,905	20	654	7	9,552	44,947
	11	343	3	4,252	32	3,206	24	2,748	21	1,689	13	951	7	13,189	58,831
	12	257	3	2,813	30	2,444	26	2,044	22	1,229	13	541	6	9,328	39,902
2011	1	206	3	2,054	26	2,222	28	2,028	25	1,068	13	424	5	8,002	33,333
	2	200	2	2,387	23	2,664	26	2,872	28	1,653	16	614	6	10,390	45,608
	3	219	2	2,173	21	2,668	26	2,499	24	2,081	20	816	8	10,456	51,866
	4	165	2	1,613	21	2,020	26	1,810	24	1,394	18	633	8	7,635	38,996
	5	185	2	1,741	18	2,290	24	2,733	28	1,909	20	823	9	9,681	49,449
	6	193	2	1,626	18	2,299	25	2,250	25	1,762	19	913	10	9,043	52,856
	7	137	3	1,011	19	1,369	26	1,289	25	870	17	578	11	5,254	31,772
	8	123	2	1,056	19	1,421	26	1,225	23	739	14	875	16	5,439	31,795

Note : Figures in percentage for individual items may not add up to 100% due to rounding.

THE LAND REGISTRY

Monthly Statistics in respect of Sale & Purchase Agreements
of building units received for registration on regional basis

Month: August 2011

Item	District	Sale and Purchase Agreements of Building Units	
		No. of Transactions	(nearest \$million)
1.	Hong Kong	1,450	11,533
2.	Kowloon	2,382	17,121
3.	Islands	135	501
4.	North	235	554
5.	Sai Kung	381	1,438
6.	Shatin	612	2,153
7.	Tai Po	251	856
8.	Tsuen Wan	888	4,342
9.	Tuen Mun	439	889
10.	Yuen Long	575	1,458
	Total	7,348	40,845