

## Press Release

### Land Registry statistics for January

\*\*\*\*\*

The Land Registry today (February 2) released its statistics for January 2012.

#### Land registration

- The number of sale and purchase agreements for all building units received for registration in January was 4,490 (-19.8% compared with December 2011 and -54.7% compared with January 2011)
- The 12-month moving average for January was 8,616 (5% below the 12-month moving average for December 2011 and 35.5% below that for January 2011)
- The total consideration for sale and purchase agreements in January was \$27.8 billion (-14.7% compared with December 2011 and -52.9% compared with January 2011)
- Among the sale and purchase agreements, 3,507 were for residential units (-18.5% compared with December 2011 and -56.2% compared with January 2011)
- The total consideration for sale and purchase agreements in respect of residential units was \$22.2 billion (-13.5% compared with December 2011 and -33.4% compared with January 2011)

The sale of residential units refers to sale and purchase agreements with payment of stamp duty. These statistics do not include the sale of units under the Home Ownership Scheme, the Private Sector Participation Scheme and the Tenants Purchase Scheme except those after payment of premium.

Figures on sale and purchase agreements received for the past 12 months, the year-on-year rate of change and breakdown figures on residential sales have also been released.

As deeds may not be lodged with the Land Registry until up to 30 days after the transaction, these statistics generally relate to land transactions in the previous month.

#### Land search

- The number of searches of land registers made by the public in January was 280,782 (-16.9% compared with December 2011 and -44.1% compared with January 2011)

The statistics cover searches made at the counter, through the self-service terminals and via the Integrated Registration Information System Online Services.

**THE LAND REGISTRY**  
Consolidated Monthly Statistics in respect of deeds received  
for registration in the Land Registry

**Table 1**

Month : January 2012

Item	Nature of Deeds	Number of Deeds received for registration			Consideration (nearest \$ million)		
		Urban	New Territories	Total	Urban	New Territories	Total
1.	Agreements for Sale and Purchase of Building Units	2,404 ( 2,878 )	2,086 ( 2,464 )	4,490 ( 5,342 )	20,535	7,274	27,809
2.	Agreements for Sale and Purchase of Land	5	144	149	418	489	907
	Sub-total (1) + (2)	2,409	2,230	4,639	20,953	7,763	28,716
3.	Assignments of Building Units	3,267 ( 3,604 )	3,082 ( 3,308 )	6,349 ( 6,912 )	17,468	10,325	27,793
4.	Assignments of Land	8	533	541	724	627	1,351
	Sub-total (3) + (4)	3,275	3,615	6,890	18,192	10,952	29,144
5.	Building Mortgages/Building Legal Charges	1	24	25			
6.	Other Mortgages/Legal Charges	2,490	2,606	5,096			
	Sub-total (5) + (6)	2,491	2,630	5,121			
7.	Receipts/Discharges/Releases	2,966	3,416	6,382			
8.	Leases/Tenancy Agreements	224	105	329			
9.	Exclusion Orders	0	0	0			
10.	Others	3,246	2,923	6,169			
	Total	14,611	14,919	29,530			

Note : Figures in brackets denote the number of units involved.

**THE LAND REGISTRY**  
**Comparison of Monthly Statistics**

**Table 2**

Month : January 2012

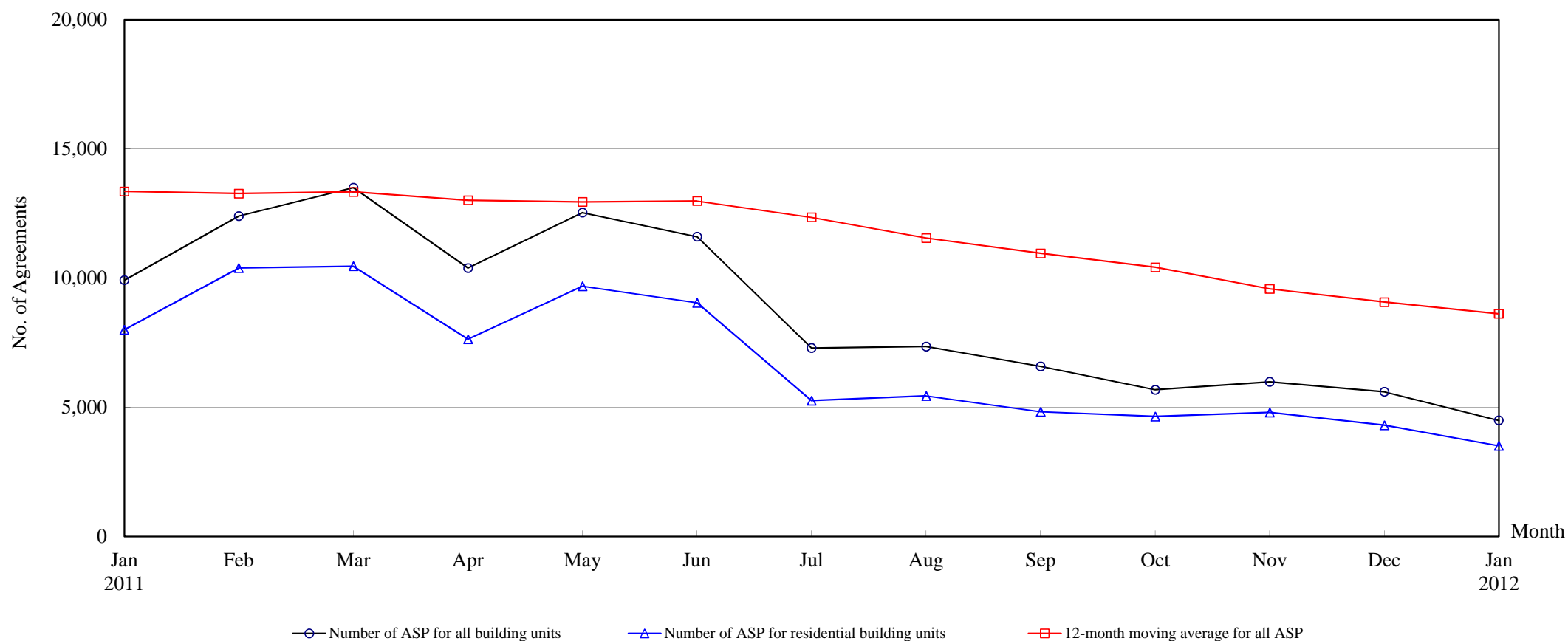
Item	2012 January	2011 December	2011 January	January 2012 Increase (+) or Decrease (-) as compared with			
				December 2011		January 2011	
				No. or Consideration	Percentage	No. or Consideration	Percentage
1. Agreements for Sale and Purchase of Building Units							
(a) No.	4,490	5,597	9,917	- 1,107	- 19.8	- 5,427	- 54.7
(b) Consideration	27,809	32,613	59,057	- 4,804	- 14.7	- 31,248	- 52.9
2. Agreements for Sale and Purchase of Land							
(a) No.	149	176	230	- 27	- 15.3	- 81	- 35.2
(b) Consideration	907	624	3,267	+ 283	+ 45.4	- 2,360	- 72.2
Sub-total of (1) + (2)							
(a) No.	4,639	5,773	10,147	- 1,134	- 19.6	- 5,508	- 54.3
(b) Consideration	28,716	33,237	62,324	- 4,521	- 13.6	- 33,608	- 53.9
3. Assignments of Building Units							
(a) No.	6,349	8,185	16,703	- 1,836	- 22.4	- 10,354	- 62.0
(b) Consideration	27,793	42,143	62,966	- 14,350	- 34.1	- 35,173	- 55.9
4. Assignments of Land							
(a) No.	541	612	614	- 71	- 11.6	- 73	- 11.9
(b) Consideration	1,351	1,816	3,704	- 465	- 25.6	- 2,353	- 63.5
Sub-total of (3) + (4)							
(a) No.	6,890	8,797	17,317	- 1,907	- 21.7	- 10,427	- 60.2
(b) Consideration	29,144	43,959	66,670	- 14,815	- 33.7	- 37,526	- 56.3
5. No. of Building Mortgages/Building Legal Charges	25	3	11	+ 22	+ 733.3	+ 14	+ 127.3
6. No. of Other Mortgages/Legal Charges	5,096	6,772	15,702	- 1,676	- 24.7	- 10,606	- 67.5
Sub-total of (5) + (6)	5,121	6,775	15,713	- 1,654	- 24.4	- 10,592	- 67.4
7. No. of Receipts/Discharges/Releases	6,382	6,955	17,775	- 573	- 8.2	- 11,393	- 64.1
8. No. of Public Search	280,782	337,740	502,271	- 56,958	- 16.9	- 221,489	- 44.1

Note : Consideration rounded to the nearest million Hong Kong dollars.

## The Land Registry

**Chart showing the number of Sale and Purchase Agreements of building units from January 2011 to January 2012**

**Table 3**



**Number of Sale and Purchase Agreements of building units**

Year	2011												2012
Month	Jan	Feb	Mar	Apr	May	Jun	Jul	Aug	Sep	Oct	Nov	Dec	Jan
Number of ASP for all building units	9,917	12,401	13,501	10,386	12,536	11,601	7,291	7,348	6,579	5,675	5,982	5,597	4,490
Number of ASP for residential building units <sup>(1)</sup>	8,002	10,390	10,456	7,635	9,681	9,043	5,254	5,439	4,823	4,643	4,795	4,301	3,507
12-month moving average for all ASP <sup>(2)</sup>	13,356	13,271	13,337	13,011	12,946	12,985	12,352	11,552	10,955	10,416	9,584	9,068	8,616

Note : (1) Sales of residential units refer to sale and purchase agreements with payment of stamp duty. These statistics do not include sales of units under the Home Ownership Scheme, the Private Sector Participation Scheme and the Tenants Purchase Scheme except those after payment of premium.

(2) 12-month moving average is calculated by dividing the sum of the figures of the previous 12 months by 12.



**Table 5****THE LAND REGISTRY****Number of Sale and Purchase Agreements of residential building units and total consideration  
from Januray 2011 to January 2012**

Year / Month		Range of Consideration ( \$ million )												Total	
		Less than 1		1 to less than 2		2 to less than 3		3 to less than 5		5 to less than 10		10 or over			
		No.	%	No.	%	No.	%	No.	%	No.	%	No.	%	No.	Consideration (\$ million)
2011	1	206	3	2,054	26	2,222	28	2,028	25	1,068	13	424	5	8,002	33,333
	2	200	2	2,387	23	2,664	26	2,872	28	1,653	16	614	6	10,390	45,608
	3	219	2	2,173	21	2,668	26	2,499	24	2,081	20	816	8	10,456	51,866
	4	165	2	1,613	21	2,020	26	1,810	24	1,394	18	633	8	7,635	38,996
	5	185	2	1,741	18	2,290	24	2,733	28	1,909	20	823	9	9,681	49,449
	6	193	2	1,626	18	2,299	25	2,250	25	1,762	19	913	10	9,043	52,856
	7	137	3	1,011	19	1,369	26	1,289	25	870	17	578	11	5,254	31,772
	8	123	2	1,056	19	1,421	26	1,225	23	739	14	875	16	5,439	31,795
	9	92	2	977	20	1,463	30	1,249	26	726	15	316	7	4,823	22,959
	10	95	2	843	18	1,116	24	1,134	24	1,187	26	268	6	4,643	22,464
	11	107	2	874	18	1,095	23	948	20	1,076	22	695	14	4,795	35,766
	12	80	2	720	17	860	20	1,202	28	973	23	466	11	4,301	25,663
2012	1	82	2	644	18	787	22	728	21	881	25	385	11	3,507	22,187

Note : Figures in percentage for individual items may not add up to 100% due to rounding.

## THE LAND REGISTRY

### Monthly Statistics in respect of Sale & Purchase Agreements of building units received for registration on regional basis

Month: January 2012

Item	District	Sale and Purchase Agreements of Building Units	
		No. of Transactions	(nearest \$million)
1.	Hong Kong	752	7,241
2.	Kowloon	1,652	13,294
3.	Islands	78	229
4.	North	106	316
5.	Sai Kung	232	984
6.	Shatin	504	2,612
7.	Tai Po	195	606
8.	Tsuen Wan	373	1,181
9.	Tuen Mun	310	608
10.	Yuen Long	288	738
	<b>Total</b>	4,490	27,809