

Press Release

Land Registry statistics for August

The Land Registry today (September 4) released its statistics for August 2012.

Land registration

- The number of sale and purchase agreements for all building units received for registration in August was 10,377 (+34.7% compared with July and +41.2% compared with August 2011)
- The 12-month moving average for August was 8,062 (3.2% above the 12-month moving average for July but 30.2% below that for August 2011)
- The total consideration for sale and purchase agreements in August was \$54.2 billion (+15.7% compared with July and +32.6% compared with August 2011)
- Among the sale and purchase agreements, 8,087 were for residential units (+41.7% compared with July and +48.7% compared with August 2011)
- The total consideration for sale and purchase agreements in respect of residential units was \$39.7 billion (+25.1% compared with July and +25% compared with August 2011)

The sale of residential units refers to sale and purchase agreements with payment of stamp duty. These statistics do not include the sale of units under the Home Ownership Scheme, the Private Sector Participation Scheme and the Tenants Purchase Scheme except those after payment of premium.

Figures on sale and purchase agreements received for the past 12 months, the year-on-year rate of change and breakdown figures on residential sales have also been released.

As deeds may not be lodged with the Land Registry until up to 30 days after the transaction, these statistics generally relate to land transactions in the previous month.

Land search

- The number of searches of land registers made by the public in August was 497,191 (+20.4% compared with July and +15.7% compared with August 2011)

The statistics cover searches made at the counter, through the self-service terminals and via the Integrated Registration Information System Online Services.

THE LAND REGISTRY
Consolidated Monthly Statistics in respect of deeds received
for registration in the Land Registry

Table 1

Month : August 2012

Item	Nature of Deeds	Number of Deeds received for registration			Consideration (nearest \$ million)		
		Urban	New Territories	Total	Urban	New Territories	Total
1.	Agreements for Sale and Purchase of Building Units	4,347 (4,785)	6,030 (6,577)	10,377 (11,362)	31,342	22,808	54,150
2.	Agreements for Sale and Purchase of Land	2	232	234	4	907	911
	Sub-total (1) + (2)	4,349	6,262	10,611	31,346	23,715	55,061
3.	Assignments of Building Units	4,871 (5,347)	5,012 (5,558)	9,883 (10,905)	33,471	15,614	49,085
4.	Assignments of Land	12	749	761	692	1,305	1,997
	Sub-total (3) + (4)	4,883	5,761	10,644	34,163	16,919	51,082
5.	Building Mortgages/Building Legal Charges	3	13	16			
6.	Other Mortgages/Legal Charges	4,313	4,580	8,893			
	Sub-total (5) + (6)	4,316	4,593	8,909			
7.	Receipts/Discharges/Releases	4,955	5,749	10,704			
8.	Leases/Tenancy Agreements	286	195	481			
9.	Exclusion Orders	0	0	0			
10.	Others	4,372	3,970	8,342			
	Total	23,161	26,530	49,691			

Note : Figures in brackets denote the number of units involved.

THE LAND REGISTRY
Comparison of Monthly Statistics

Table 2

Month : August 2012

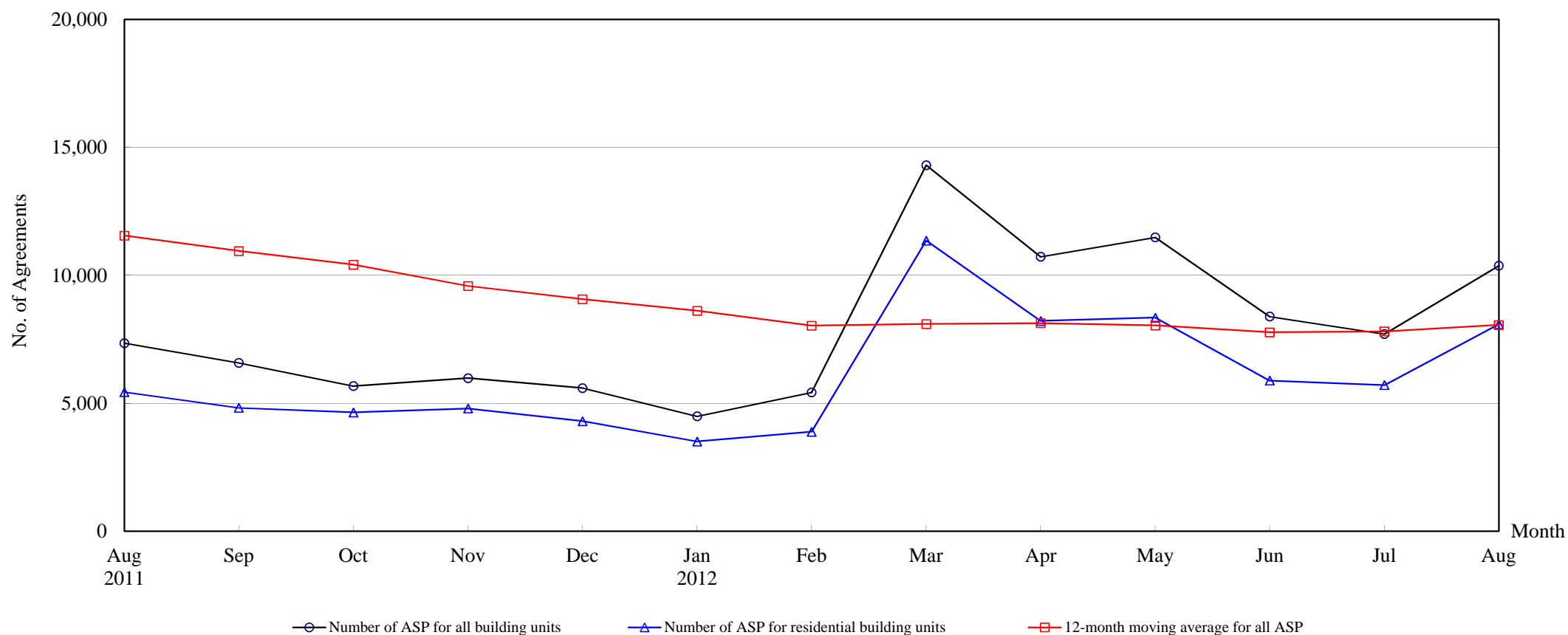
Item	2012 August	2012 July	2011 August	August 2012			
				Increase (+) or Decrease (-) as compared with			
				July 2012		August 2011	
No. or Consideration	Percentage	No. or Consideration	Percentage				
1. Agreements for Sale and Purchase of Building Units							
(a) No.	10,377	7,706	7,348	+ 2,671	+ 34.7	+ 3,029	+ 41.2
(b) Consideration	54,150	46,802	40,845	+ 7,348	+ 15.7	+ 13,305	+ 32.6
2. Agreements for Sale and Purchase of Land							
(a) No.	234	199	244	+ 35	+ 17.6	- 10	- 4.1
(b) Consideration	911	1,426	1,809	- 515	- 36.1	- 898	- 49.6
Sub-total of (1) + (2)							
(a) No.	10,611	7,905	7,592	+ 2,706	+ 34.2	+ 3,019	+ 39.8
(b) Consideration	55,061	48,228	42,654	+ 6,833	+ 14.2	+ 12,407	+ 29.1
3. Assignments of Building Units							
(a) No.	9,883	11,554	12,883	- 1,671	- 14.5	- 3,000	- 23.3
(b) Consideration	49,085	56,650	80,578	- 7,565	- 13.4	- 31,493	- 39.1
4. Assignments of Land							
(a) No.	761	646	779	+ 115	+ 17.8	- 18	- 2.3
(b) Consideration	1,997	2,015	2,221	- 18	- 0.9	- 224	- 10.1
Sub-total of (3) + (4)							
(a) No.	10,644	12,200	13,662	- 1,556	- 12.8	- 3,018	- 22.1
(b) Consideration	51,082	58,665	82,799	- 7,583	- 12.9	- 31,717	- 38.3
5. No. of Building Mortgages/Building Legal Charges	16	13	24	+ 3	+ 23.1	- 8	- 33.3
6. No. of Other Mortgages/Legal Charges	8,893	9,931	10,806	- 1,038	- 10.5	- 1,913	- 17.7
Sub-total of (5) + (6)	8,909	9,944	10,830	- 1,035	- 10.4	- 1,921	- 17.7
7. No. of Receipts/Discharges/Releases	10,704	11,055	13,767	- 351	- 3.2	- 3,063	- 22.2
8. No. of Public Search	497,191	413,097	429,864	+ 84,094	+ 20.4	+ 67,327	+ 15.7

Note : Consideration rounded to the nearest million Hong Kong dollars.

The Land Registry

Chart showing the number of Sale and Purchase Agreements of building units from August 2011 to August 2012

Table 3



Number of Sale and Purchase Agreements of building units

Year	2011					2012							
Month	Aug	Sep	Oct	Nov	Dec	Jan	Feb	Mar	Apr	May	June	July	August
Number of ASP for all building units	7,348	6,579	5,675	5,982	5,597	4,490	5,425	14,306	10,728	11,484	8,389	7,706	10,377
Number of ASP for residential building units ⁽¹⁾	5,439	4,823	4,643	4,795	4,301	3,507	3,884	11,358	8,217	8,349	5,886	5,709	8,087
12-month moving average for all ASP ⁽²⁾	11,552	10,955	10,416	9,584	9,068	8,616	8,034	8,101	8,130	8,042	7,775	7,809	8,062

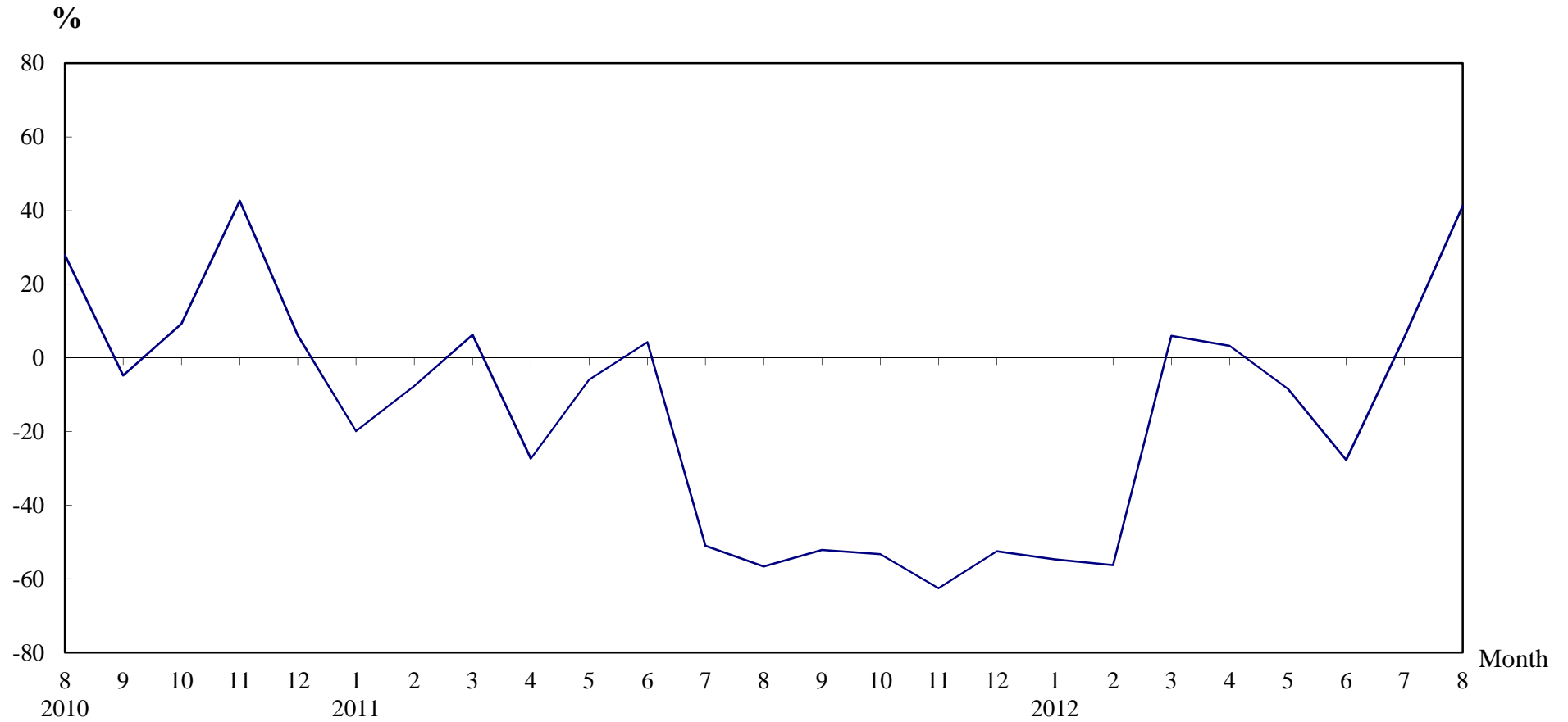
Note : (1) Sales of residential units refer to sale and purchase agreements with payment of stamp duty. These statistics do not include sales of units under the Home Ownership Scheme, the Private Sector Participation Scheme and the Tenants Purchase Scheme except those after payment of premium.

(2) 12-month moving average is calculated by dividing the sum of the figures of the previous 12 months by 12.

The Land Registry

Table 4

Year-on-year Rate of Change in the Number of Sale and Purchase Agreements



Number of Sale and Purchase Agreements of residential and non-residential building units

Year/Month	Jan	Feb	Mar	Apr	May	Jun	Jul	Aug	Sep	Oct	Nov	Dec
2010	12,380	13,423	12,706	14,300	13,325	11,128	14,885	16,946	13,749	12,140	15,967	11,790
2011	9,917	12,401	13,501	10,386	12,536	11,601	7,291	7,348	6,579	5,675	5,982	5,597
2012	4,490	5,425	14,306	10,728	11,484	8,389	7,706	10,377				

Table 5**THE LAND REGISTRY****Number of Sale and Purchase Agreements of residential building units and total consideration
from August 2011 to August 2012**

Year / Month		Range of Consideration (\$ million)												Total	
		Less than 1		1 to less than 2		2 to less than 3		3 to less than 5		5 to less than 10		10 or over			
		No.	%	No.	%	No.	%	No.	%	No.	%	No.	%	No.	Consideration (\$ million)
2011	8	123	2	1,056	19	1,421	26	1,225	23	739	14	875	16	5,439	31,795
	9	92	2	977	20	1,463	30	1,249	26	726	15	316	7	4,823	22,959
	10	95	2	843	18	1,116	24	1,134	24	1,187	26	268	6	4,643	22,464
	11	107	2	874	18	1,095	23	948	20	1,076	22	695	14	4,795	35,766
	12	80	2	720	17	860	20	1,202	28	973	23	466	11	4,301	25,663
2012	1	82	2	644	18	787	22	728	21	881	25	385	11	3,507	22,187
	2	91	2	771	20	1,050	27	965	25	713	18	294	8	3,884	19,031
	3	114	1	1,729	15	3,138	28	3,176	28	2,181	19	1,020	9	11,358	59,040
	4	95	1	1,168	14	2,271	28	2,311	28	1,660	20	712	9	8,217	44,677
	5	105	1	1,067	13	2,165	26	2,638	32	1,652	20	722	9	8,349	47,352
	6	93	2	808	14	1,475	25	1,682	29	1,306	22	522	9	5,886	34,070
	7	72	1	663	12	1,200	21	1,821	32	1,512	26	441	8	5,709	31,773
	8	87	1	808	10	2,060	25	3,120	39	1,496	18	516	6	8,087	39,735

Note : Figures in percentage for individual items may not add up to 100% due to rounding.

THE LAND REGISTRY

Monthly Statistics in respect of Sale & Purchase Agreements
of building units received for registration on regional basis

Month: August 2012

Item	District	Sale and Purchase Agreements of Building Units	
		No. of Transactions	(nearest \$million)
1.	Hong Kong	1,798	15,021
2.	Kowloon	2,549	16,321
3.	Islands	215	876
4.	North	328	995
5.	Sai Kung	1,441	5,973
6.	Shatin	945	3,968
7.	Tai Po	349	1,569
8.	Tsuen Wan	1,322	5,591
9.	Tuen Mun	738	1,804
10.	Yuen Long	692	2,032
	Total	10,377	54,150