

## Press Release

### Land Registry statistics for August

\*\*\*\*\*

The Land Registry today (September 3) released its statistics for August 2013.

#### Land registration

- The number of sale and purchase agreements for all building units received for registration in August was 5,111 (-6.9% compared with July and -50.7% compared with August 2012)
- The 12-month moving average for August was 7,692 (5.4% below the 12-month moving average for July and 4.6% below that for August 2012)
- The total consideration for sale and purchase agreements in August was \$30.1 billion (+8.9% compared with July but -44.4% compared with August 2012)
- Among the sale and purchase agreements, 3,407 were for residential units (-14.5% compared with July and -57.9% compared with August 2012)
- The total consideration for sale and purchase agreements in respect of residential units was \$19.6 billion (-6.8% compared with July and -50.8% compared with August 2012)

The statistics only cover sale and purchase agreements with payment of stamp duty. Sale and purchase agreements relating to the sale of units under the Home Ownership Scheme, the Private Sector Participation Scheme and the Tenants Purchase Scheme are not included unless the premium of the unit concerned has been paid after the sale restriction period.

Figures on sale and purchase agreements received for the past 12 months, the year-on-year rate of change and breakdown figures on residential sales have also been released.

As deeds may not be lodged with the Land Registry until up to 30 days after the transaction, these statistics generally relate to land transactions in the previous month.

#### Land search

- The number of searches of land registers made by the public in August was 375,700 (-6.2% compared with July and -24.4% compared with August 2012)

The statistics cover searches made at the counter, through the self-service terminals and via the Integrated Registration Information System Online Services.

**THE LAND REGISTRY**  
Consolidated Monthly Statistics in respect of deeds received  
for registration in the Land Registry

**Table 1**

Month : August 2013

Item	Nature of Deeds	Number of Deeds received for registration			Consideration (nearest \$ million)		
		Urban	New Territories	Total	Urban	New Territories	Total
1.	Agreements for Sale and Purchase of Building Units	2,496 ( 2,889 )	2,615 ( 2,790 )	5,111 ( 5,679 )	16,809	13,313	30,122
2.	Agreements for Sale and Purchase of Land	2	150	152	233	555	788
	Sub-total (1) + (2)	2,498	2,765	5,263	17,042	13,868	30,910
3.	Assignments of Building Units	3,006 ( 3,372 )	3,532 ( 3,834 )	6,538 ( 7,206 )	23,454	15,840	39,294
4.	Assignments of Land	4	581	585	83	905	988
	Sub-total (3) + (4)	3,010	4,113	7,123	23,537	16,745	40,282
5.	Building Mortgages/Building Legal Charges	0	6	6			
6.	Other Mortgages/Legal Charges	2,923	3,505	6,428			
	Sub-total (5) + (6)	2,923	3,511	6,434			
7.	Receipts/Discharges/Releases	3,418	4,432	7,850			
8.	Leases/Tenancy Agreements	316	161	477			
9.	Exclusion Orders	0	0	0			
10.	Others	4,026	3,822	7,848			
	Total	16,191	18,804	34,995			

Note : Figures in brackets denote the number of units involved.

**THE LAND REGISTRY**  
**Comparison of Monthly Statistics**

**Table 2**

Month : August 2013

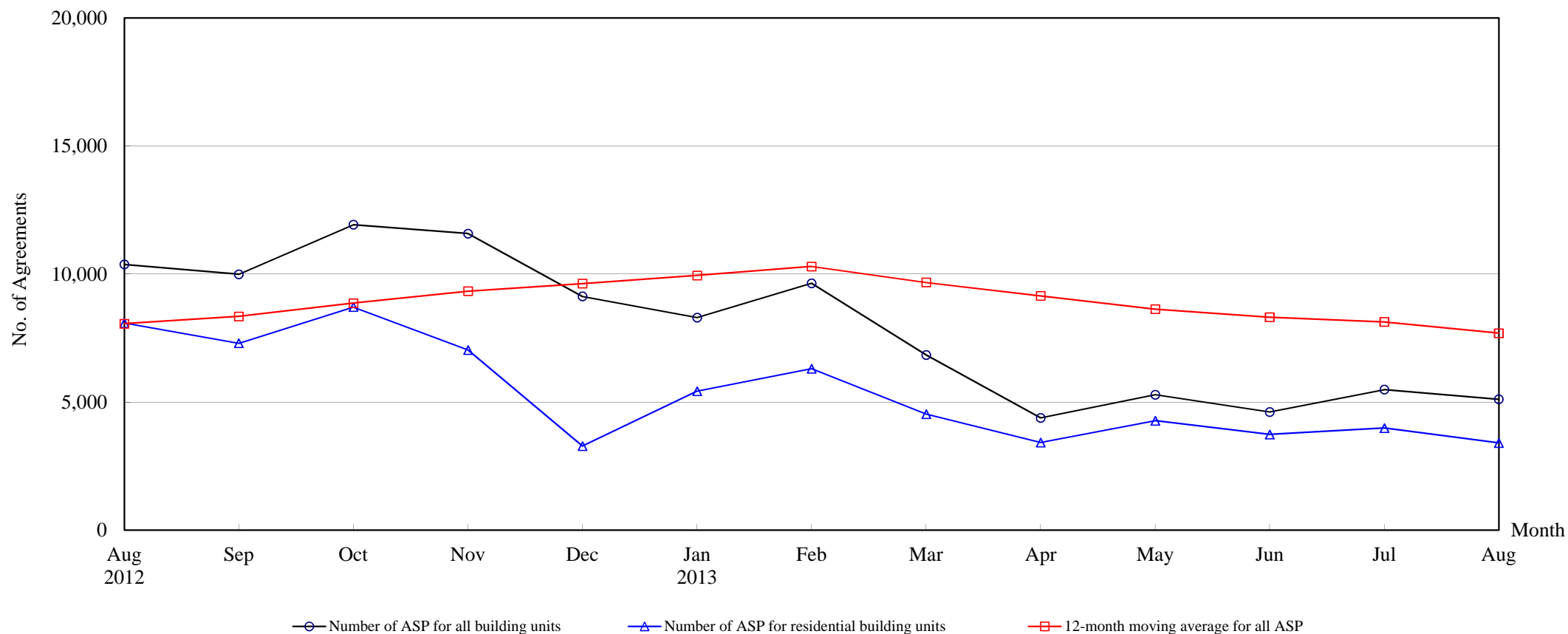
Item	2013 August	2013 July	2012 August	August 2013			
				Increase (+) or Decrease (-) as compared with			
				July 2013		August 2012	
No. or Consideration	Percentage	No. or Consideration	Percentage				
1. Agreements for Sale and Purchase of Building Units							
(a) No.	5,111	5,489	10,377	- 378	- 6.9	- 5,266	- 50.7
(b) Consideration	30,122	27,657	54,150	+ 2,465	+ 8.9	- 24,028	- 44.4
2. Agreements for Sale and Purchase of Land							
(a) No.	152	168	234	- 16	- 9.5	- 82	- 35.0
(b) Consideration	788	3,169	911	- 2,381	- 75.1	- 123	- 13.5
Sub-total of (1) + (2)							
(a) No.	5,263	5,657	10,611	- 394	- 7.0	- 5,348	- 50.4
(b) Consideration	30,910	30,826	55,061	+ 84	+ 0.3	- 24,151	- 43.9
3. Assignments of Building Units							
(a) No.	6,538	7,302	9,883	- 764	- 10.5	- 3,345	- 33.8
(b) Consideration	39,294	50,060	49,085	- 10,766	- 21.5	- 9,791	- 19.9
4. Assignments of Land							
(a) No.	585	508	761	+ 77	+ 15.2	- 176	- 23.1
(b) Consideration	988	4,762	1,997	- 3,774	- 79.3	- 1,009	- 50.5
Sub-total of (3) + (4)							
(a) No.	7,123	7,810	10,644	- 687	- 8.8	- 3,521	- 33.1
(b) Consideration	40,282	54,822	51,082	- 14,540	- 26.5	- 10,800	- 21.1
5. No. of Building Mortgages/Building Legal Charges	6	1	16	+ 5	+ 500.0	- 10	- 62.5
6. No. of Other Mortgages/Legal Charges	6,428	7,134	8,893	- 706	- 9.9	- 2,465	- 27.7
Sub-total of (5) + (6)	6,434	7,135	8,909	- 701	- 9.8	- 2,475	- 27.8
7. No. of Receipts/Discharges/Releases	7,850	7,955	10,704	- 105	- 1.3	- 2,854	- 26.7
8. No. of Public Search	375,700	400,527	497,191	- 24,827	- 6.2	- 121,491	- 24.4

Note : Consideration rounded to the nearest million Hong Kong dollars.

## The Land Registry

### Chart showing the number of Sale and Purchase Agreements of building units from August 2012 to August 2013

**Table 3**



### Number of Sale and Purchase Agreements of building units

Year	2012					2013							
Month	Aug	Sep	Oct	Nov	Dec	Jan	Feb	Mar	Apr	May	Jun	Jul	Aug
Number of ASP for all building units	10,377	9,990	11,928	11,581	9,129	8,302	9,643	6,841	4,387	5,288	4,616	5,489	5,111
Number of ASP for residential building units <sup>(1)</sup>	8,087	7,301	8,714	7,035	3,286	5,430	6,307	4,534	3,427	4,276	3,740	3,986	3,407
12-month moving average for all ASP <sup>(2)</sup>	8,062	8,346	8,867	9,333	9,628	9,945	10,297	9,675	9,146	8,630	8,316	8,131	7,692

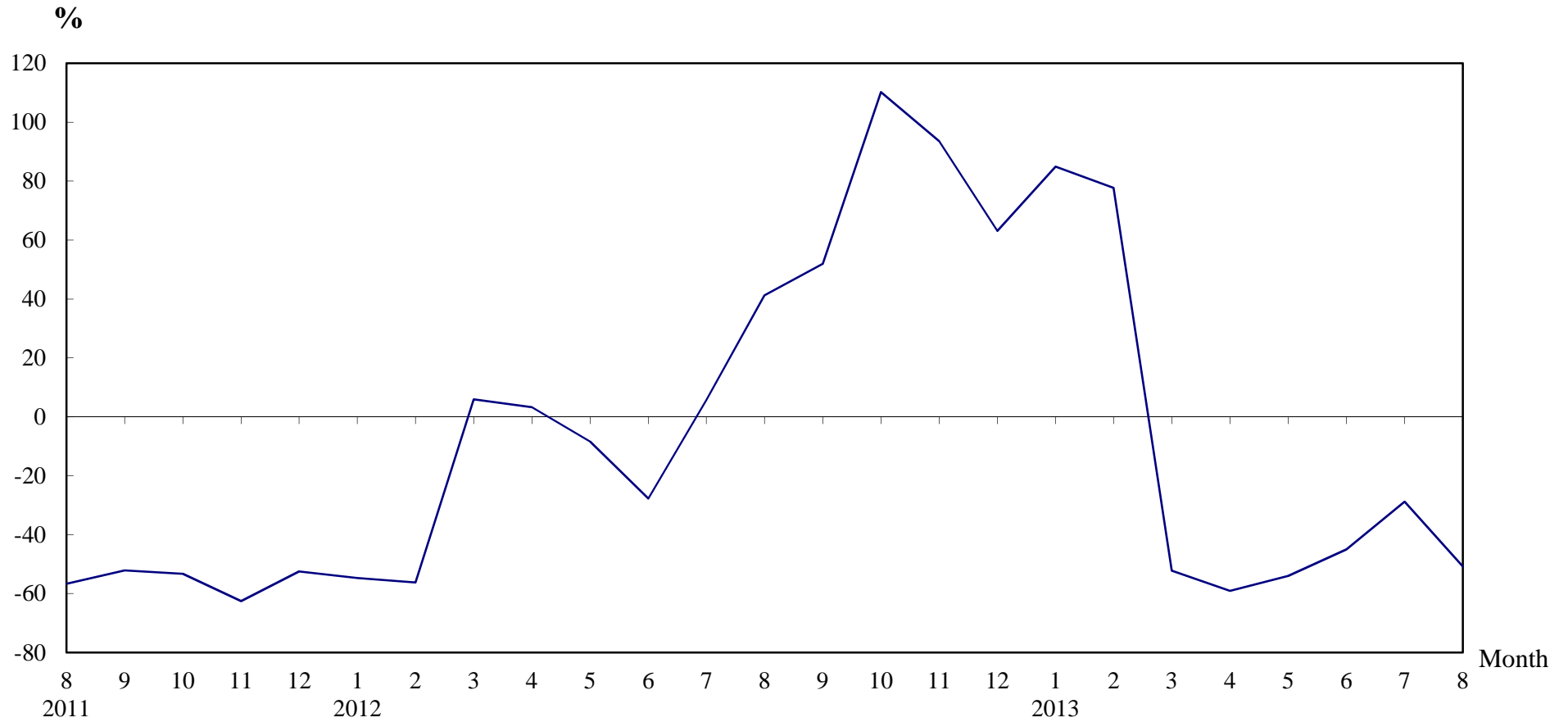
Note : (1) Sales of residential units refer to sale and purchase agreements with payment of stamp duty. These statistics do not include sales of units under the Home Ownership Scheme, the Private Sector Participation Scheme and the Tenants Purchase Scheme unless the premium of the unit concerned has been paid after the sale restriction period.

(2) 12-month moving average is calculated by dividing the sum of the figures of the previous 12 months by 12.

**The Land Registry**

**Table 4**

**Year-on-year Rate of Change in the Number of Sale and Purchase Agreements**



**Number of Sale and Purchase Agreements of residential and non-residential building units**

Year/Month	Jan	Feb	Mar	Apr	May	Jun	Jul	Aug	Sep	Oct	Nov	Dec
2011	9,917	12,401	13,501	10,386	12,536	11,601	7,291	7,348	6,579	5,675	5,982	5,597
2012	4,490	5,425	14,306	10,728	11,484	8,389	7,706	10,377	9,990	11,928	11,581	9,129
2013	8,302	9,643	6,841	4,387	5,288	4,616	5,489	5,111				

**Table 5****THE LAND REGISTRY****Number of Sale and Purchase Agreements of residential building units and total consideration  
from August 2012 to August 2013**

Year / Month		Range of Consideration ( \$ million )												Total	
		Less than 1		1 to less than 2		2 to less than 3		3 to less than 5		5 to less than 10		10 or over			
		No.	%	No.	%	No.	%	No.	%	No.	%	No.	%	No.	Consideration (\$ million)
2012	8	87	1	808	10	2,060	25	3,120	39	1,496	18	516	6	8,087	39,735
	9	68	1	770	11	1,876	26	2,330	32	1,549	21	708	10	7,301	40,437
	10	62	1	595	7	1,679	19	2,705	31	2,626	30	1,047	12	8,714	54,845
	11	76	1	563	8	1,503	21	2,543	36	1,570	22	780	11	7,035	41,968
	12	65	2	362	11	864	26	1,093	33	611	19	291	9	3,286	17,160
2013	1	73	1	400	7	1,190	22	2,079	38	1,229	23	459	8	5,430	28,542
	2	42	1	355	6	1,191	19	2,187	35	1,717	27	815	13	6,307	38,694
	3	64	1	343	8	754	17	1,702	38	1,205	27	466	10	4,534	27,040
	4	37	1	255	7	662	19	1,527	45	638	19	308	9	3,427	18,715
	5	47	1	264	6	904	21	1,929	45	701	16	431	10	4,276	24,026
	6	47	1	245	7	927	25	1,493	40	808	22	220	6	3,740	18,699
	7	52	1	245	6	879	22	1,600	40	888	22	322	8	3,986	20,991
	8	43	1	203	6	699	21	1,411	41	817	24	234	7	3,407	19,565

Note : Figures in percentage for individual items may not add up to 100% due to rounding.

## THE LAND REGISTRY

Monthly Statistics in respect of Sale & Purchase Agreements  
of building units received for registration on regional basis

Month: August 2013

Item	District	Sale and Purchase Agreements of Building Units	
		No. of Transactions	(nearest \$million)
1.	Hong Kong	982	8,059
2.	Kowloon	1,514	8,750
3.	Islands	98	379
4.	North	170	606
5.	Sai Kung	251	1,026
6.	Shatin	412	3,558
7.	Tai Po	156	598
8.	Tsuen Wan	449	1,746
9.	Tuen Mun	323	1,367
10.	Yuen Long	756	4,033
	<b>Total</b>	5,111	30,122