



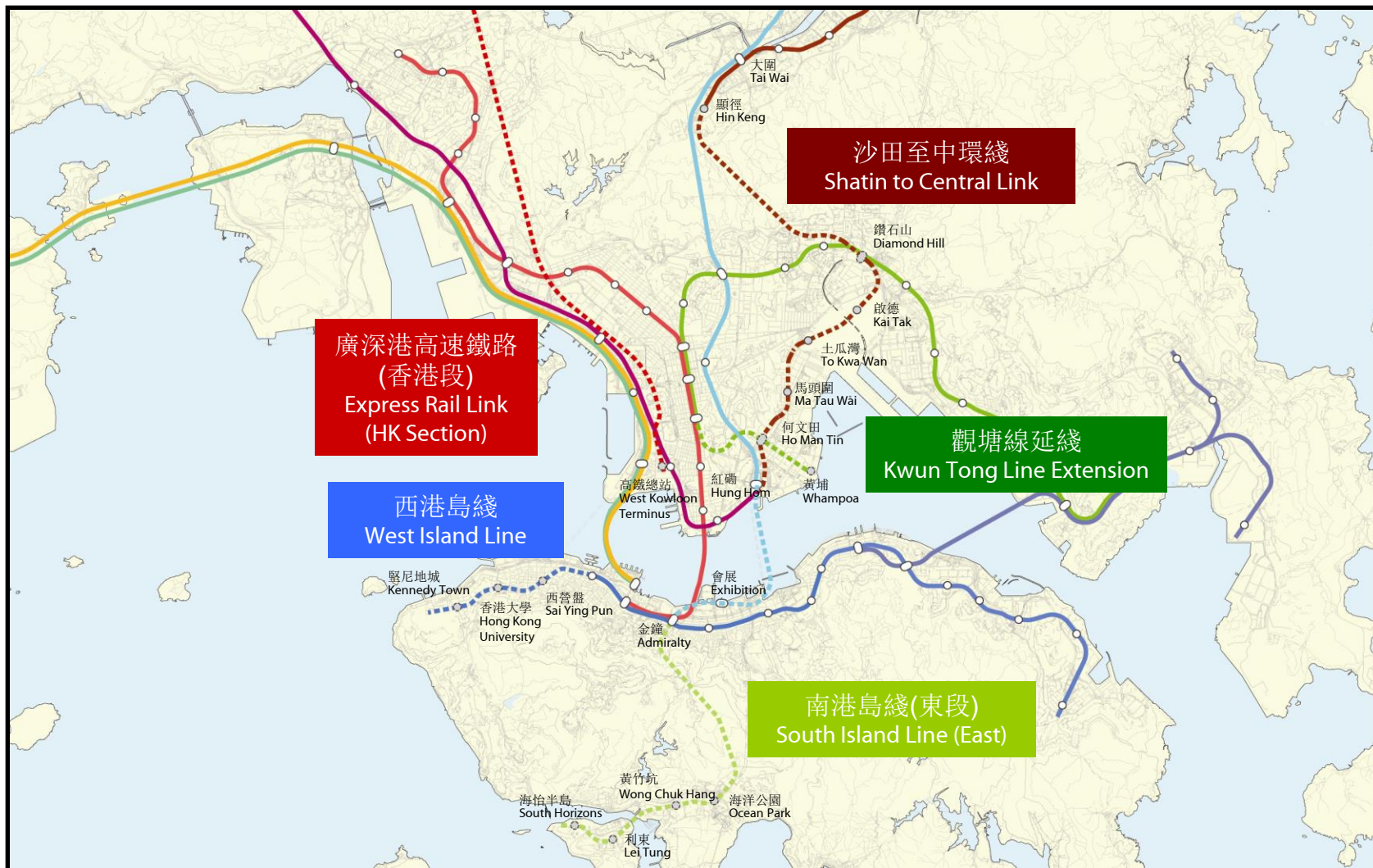
# 鐵路項目的社區聯絡工作

## Community Liaison Work associated with the railway projects

2014年1月  
January 2014

# 建設以服務市民為本的新鐵路

## The New Railway Network to Serve the Public



# 社區聯絡工作目的

## Objectives of the Community Liaison Work

- 讓社區了解工程內容、定期進展和對社區可能造成的影響；  
To facilitate the community's understanding of the nature of the construction programme, the works progress and possible impacts,
- 主動與社區接觸，保持互動及雙向的溝通，與社區建立持續的互信關係；  
The teams proactively make direct and interactive communication with neighbourhood residents, and to build mutual respect with the community,
- 在可行的情況下，參考社區的建議以調整和優化施工方案，讓鐵路項目成為社區的一部分。  
Wherever practicable, the teams would consider the opinions raised by the community and adjust and enhance the construction method to make the railway project be part of the community.

# 分享和討論新鐵路的設計規劃

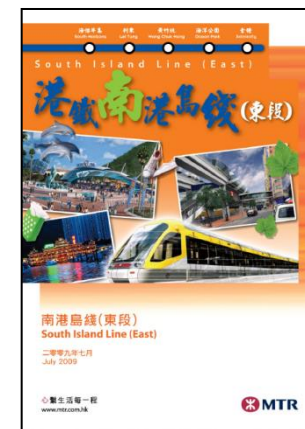
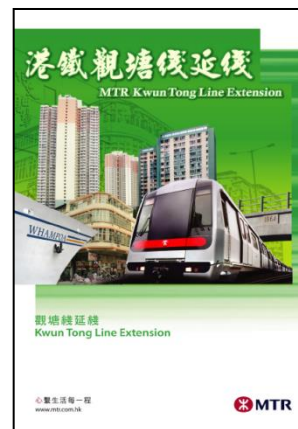
Share and discuss the blueprint of the new railways



公眾諮詢會及居民會議  
Public forums and resident meetings



巡迴展覽  
Roving Exhibitions



刊物  
Publications

# 平衡持份者意見 可行情況下調整和優化 Study and balance opinions from stakeholders Incorporates revisions and enhancements when feasible



西港島綫  
保育科士街樹牆  
West Island Line  
Preservation of the Hundred-year-old Forbes Street tree walls



原建議  
Original Proposal



修訂計劃  
Amended Scheme

# 適度優化及改善重置設施

## Modification and enhancement works to the reprovisioned facilities

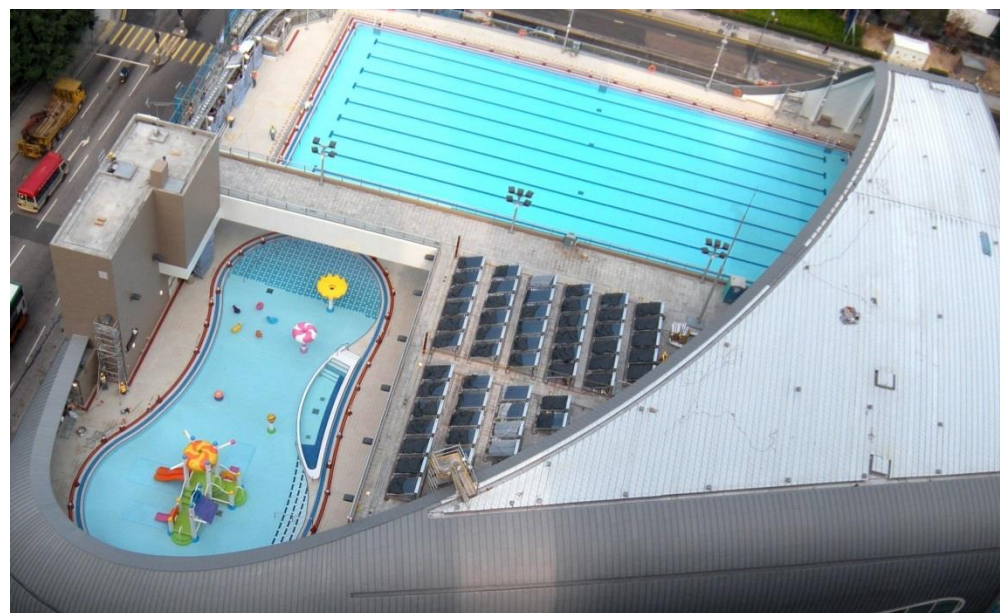


新建戴麟趾康復中心  
Upgrading works for the David Trench  
Rehabilitation Centre



重置的中央郵件中心  
Reprovisioned International Mail Centre

重置的堅尼地城游泳池  
Reprovisioned Kennedy Town Swimming Pool



# 定期匯報工程進展 加強溝通渠道

## Keep Public Informed of Progress Updates

### Enhance communication channels



實地考察及家訪  
Site visits and meetings with residents



專題網頁  
Dedicated websites



資訊中心  
Information Centre/ counter

港鐵工程熱線：2993 3333  
MTR Projects Hotline: 2993 3333

# 優化建造工序及實施工地緩解措施

## Modify works arrangement and implement mitigation measures



密封式隔音罩  
Fully enclosed noise barrier



明山爆破大型爆破保護網  
Roof over for open blast



用「水」作豎井爆破工程的緩衝  
Water is used as blast ballast in the excavation of the shaft



# 其他工程相關緩解措施

## Mitigation Measures for construction related works



關懷大使  
Caring ambassadors



加強整理工地環境  
Site housekeeping



臨時指示牌  
Temporary Signage

# 公眾參與活動

## Public Engagement Activities



「鐵路通通識」漫畫  
“Railway know it all” comics



公開比賽  
Open competitions



# 主動關顧社區 加深對鐵路項目的了解

## Show care to the community proactively

### Enhance the understanding in new railway projects



學校講座  
School talks



與不同機構合辦活動認識鐵路工程  
Co-organized activities with different organizations to understand railway projects



社區大使積極與地區建立良好關係  
The Community Ambassadors put in extra effort in building harmonious relations with the community

# 公眾參與新車站藝術 讓鐵路成為社區一部分

## Public engaged arts programme make a community railway



# 總結

## Conclusion

建設鐵路須以服務市民為本，透過有效的社區聯絡，與社區保持雙向緊密的聯繫，讓社區了解鐵路計劃內容，增加公眾的參與，有助鐵路項目配合將來社區的發展。鐵路計劃有時因受制於不同因素而未能完全加入社區意見，社區聯絡工作便起著重要的作用，透過雙向、開放的溝通達至共識，協助新鐵路項目順利推行。

**Railway is built to serve the community, while effective community liaison works help shape the project to meet the future development needs of the district. Through interactive communications with the locals, we enhance their understanding on the railway projects and encourage their participation. At times when the projects are bounded and unable to incorporate all the comments from the local community, an open and interactive dialogue helps reach consensus, bringing the benefits of community liaison works into full play and implement the projects successfully.**