



南港島綫(東段)項目進展

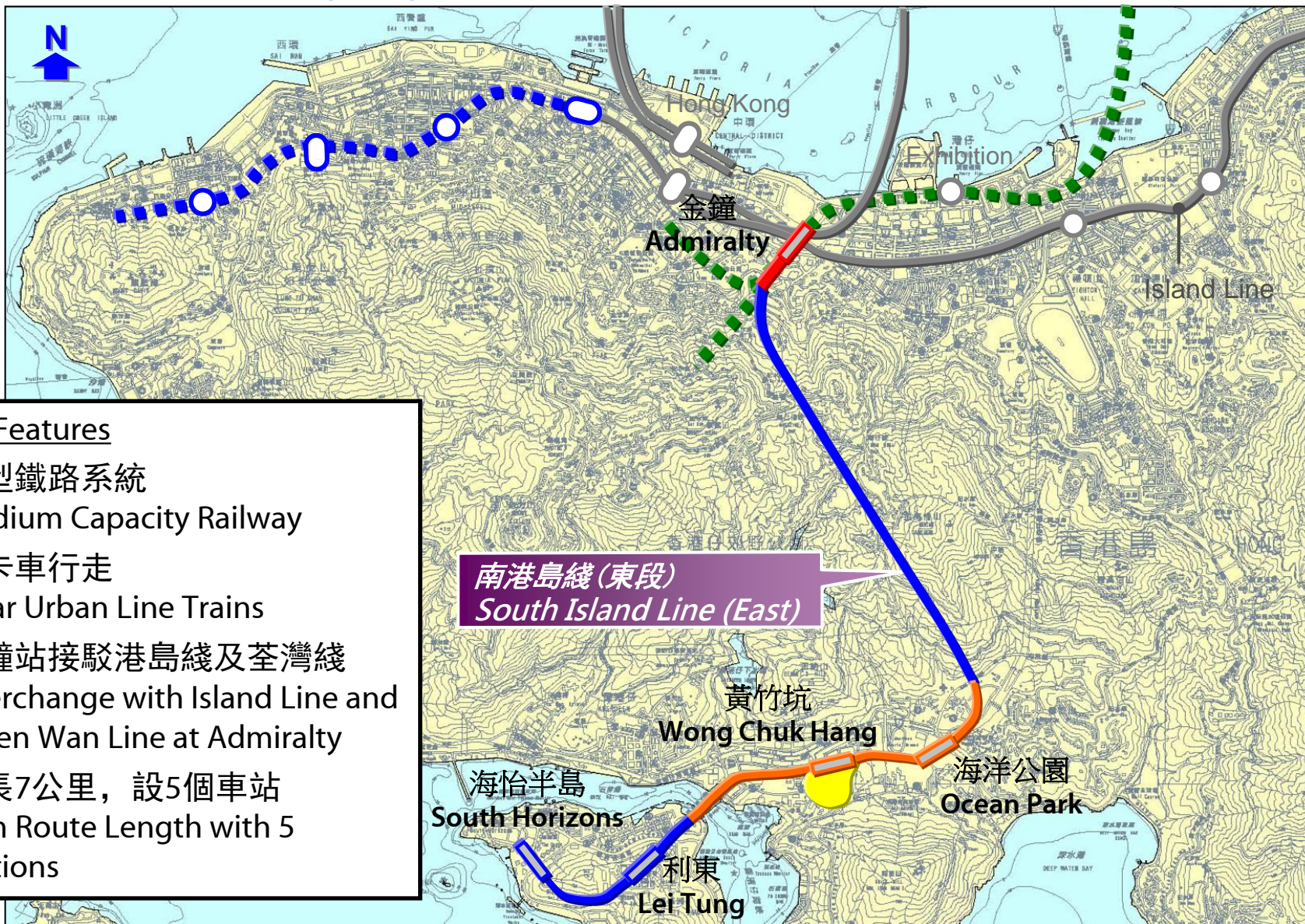
South Island Line (East) Progress Update

June 2014



南港島綫(東段)概覽

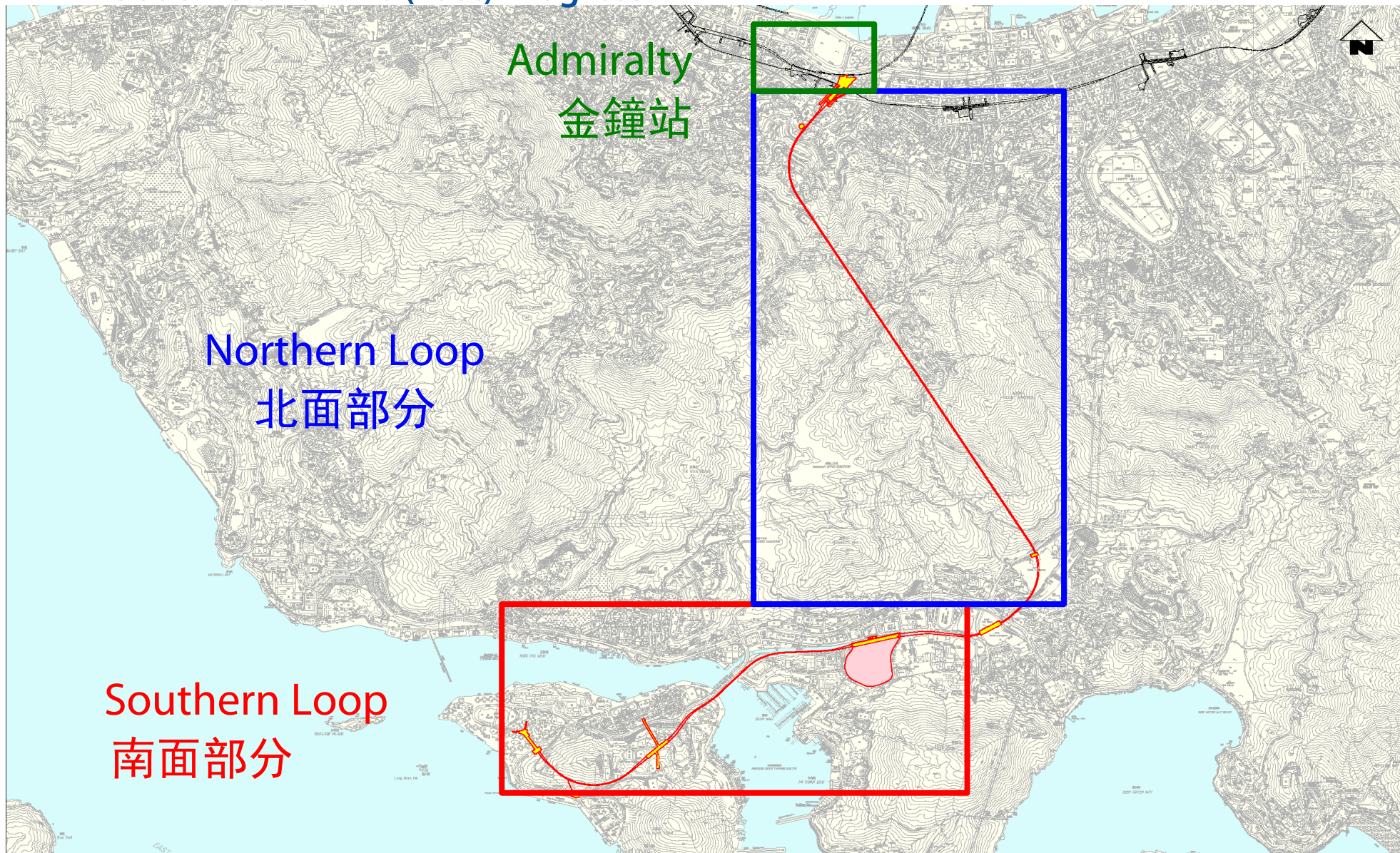
South Island Line (East) Overview



特色 Features

- 中型鐵路系統
Medium Capacity Railway
- 三卡車行走
3-car Urban Line Trains
- 金鐘站接駁港島綫及荃灣綫
Interchange with Island Line and Tsuen Wan Line at Admiralty
- 全長7公里，設5個車站
7km Route Length with 5 Stations

南港島綫 (東段) 進度 South Island Line (East) Progress



南面部分 – 海怡半島站 Southern Loop – South Horizons Station

開挖工程已完成，結構工程現正進行
Excavation works completed and structural works in progress



南面部分 – 利東站 Southern Loop – Lei Tung Station

軌道工程已完成，洞穴頂壁建造工程現正進行
Track construction completed and Cavern Arch Lining in progress



南面部分 – 鴨脷洲隧道

Southern Loop – Ap Lei Chau Tunnel

軌道工程現正進行
Track construction in progress



南面部分 – 海洋公園站及黃竹坑站

Southern Loop – Ocean Park Station and Wong Chuk Hang Station

車站及高架橋結構已完成

Station and Viaduct structures completed

機電工程及裝修工程現正進行

E&M and architectural fit-out works in progress



南面部分 – 黃竹坑鐵路維修車廠 Southern Loop – Wong Chuk Hang Depot

結構工程已完成，機電工程現正進行

Structural works complete and E&M fit-out works in progress

工程車已運抵，軌道相關安裝工程於2014年6月展開

Works Trains delivered and track related installation to start in June 2014



北面部分 - 南風隧道 Northern Loop - Nam Fung Tunnel

香港公園通風大樓
Hong Kong Park
Ventilation Building

3164米的隧道挖掘工程已完成2750米
Tunnel excavation 2750m of 3164m
completed



隧道壁工程現正進行
Tunnel lining works in progress

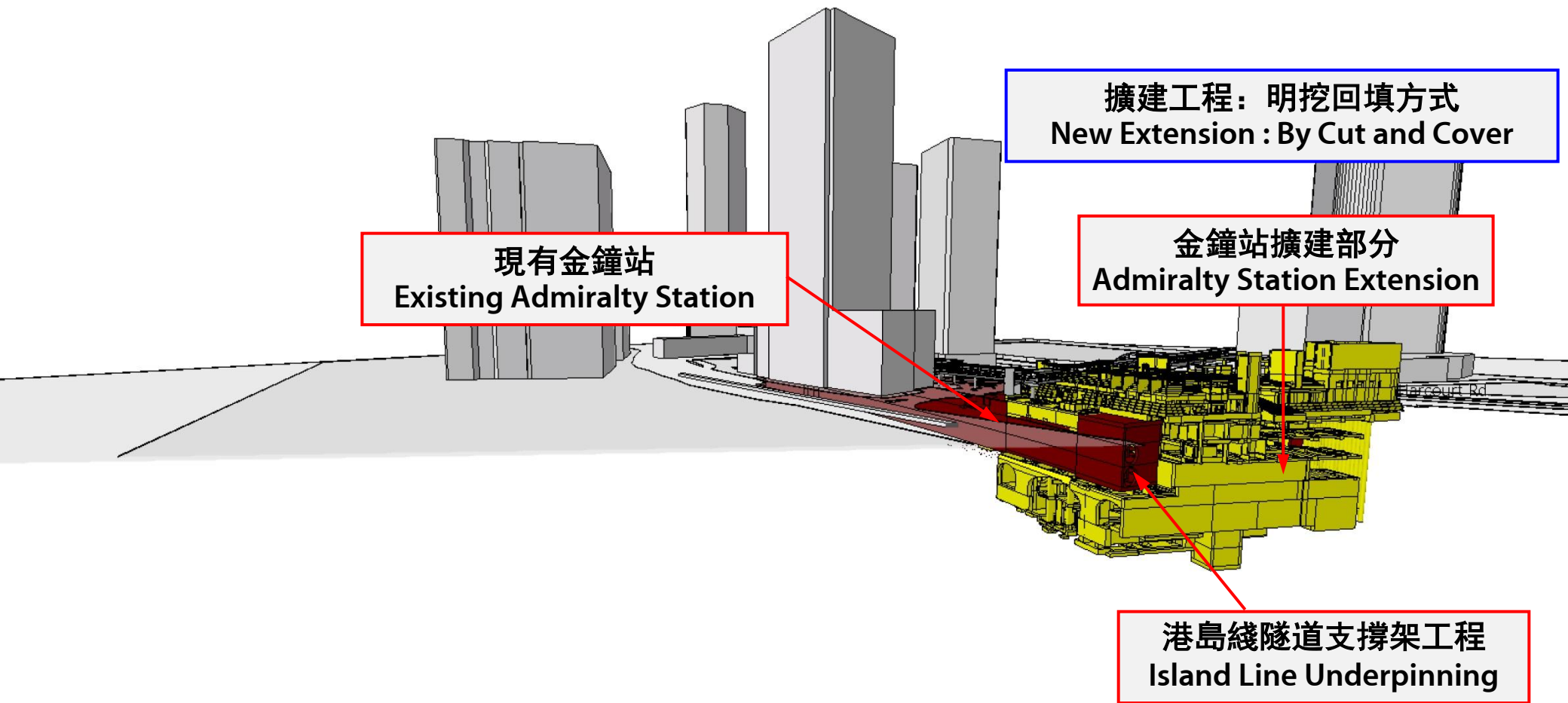


海洋公園站
Ocean Park Station

南風通風大樓
Nam Fung
Ventilation Building

A 3D architectural rendering of the Admiralty Station area. The scene shows several grey, rectangular buildings of varying heights. In the foreground, a red structure, likely a station platform or part of the station's infrastructure, is visible. A red arrow points from a white callout box with a red border to this red structure. The callout box contains the text "現有金鐘站" and "Existing Admiralty Station".

現有金鐘站
Existing Admiralty Station

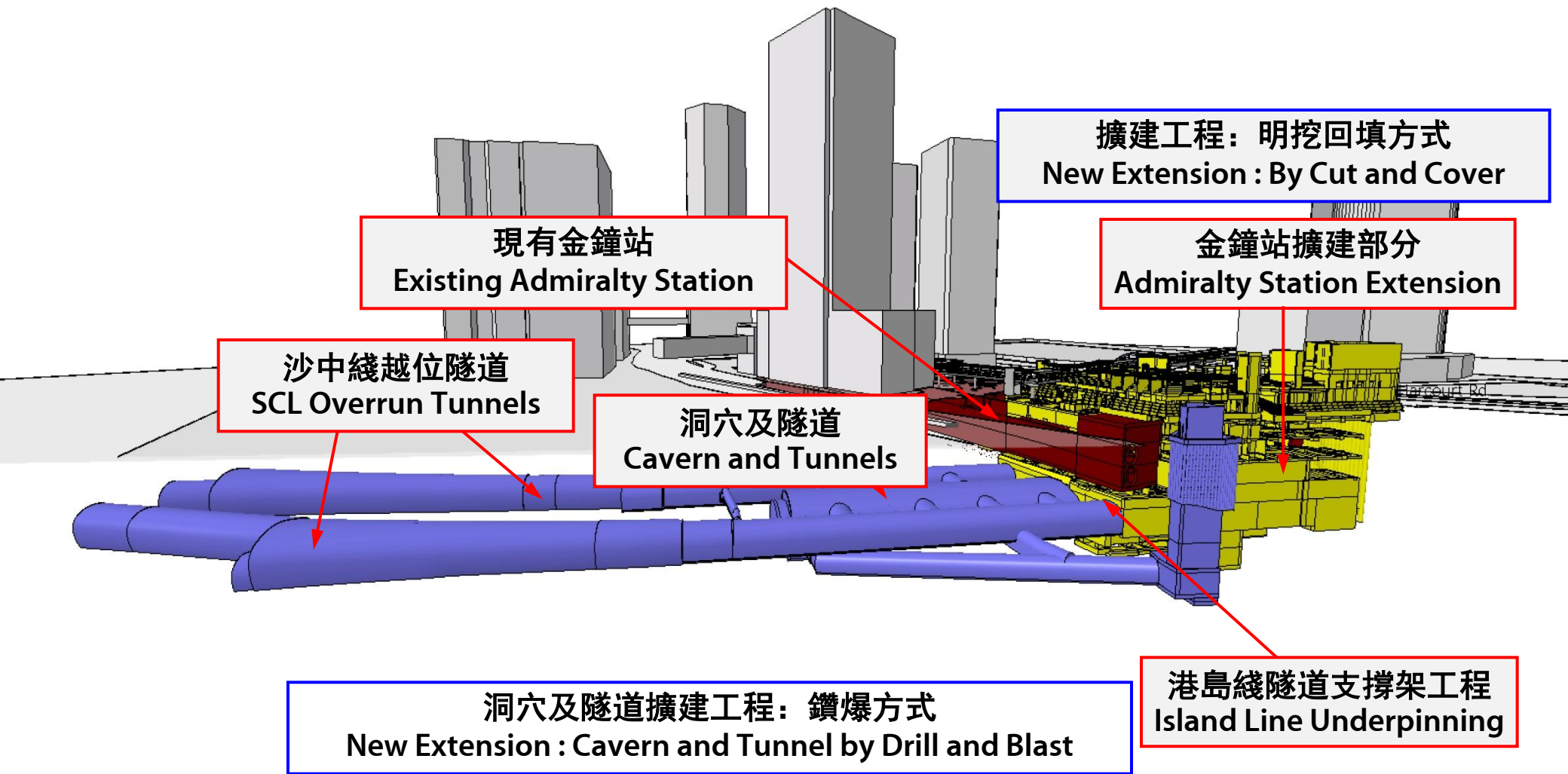


現有金鐘站
Existing Admiralty Station

擴建工程：明挖回填方式
New Extension : By Cut and Cover

金鐘站擴建部分
Admiralty Station Extension

港島綫隧道支撐架工程
Island Line Underpinning



金鐘站 – 隧道支撐架工程及金鐘站擴建部分 Admiralty Station – Underpinning and Station Box

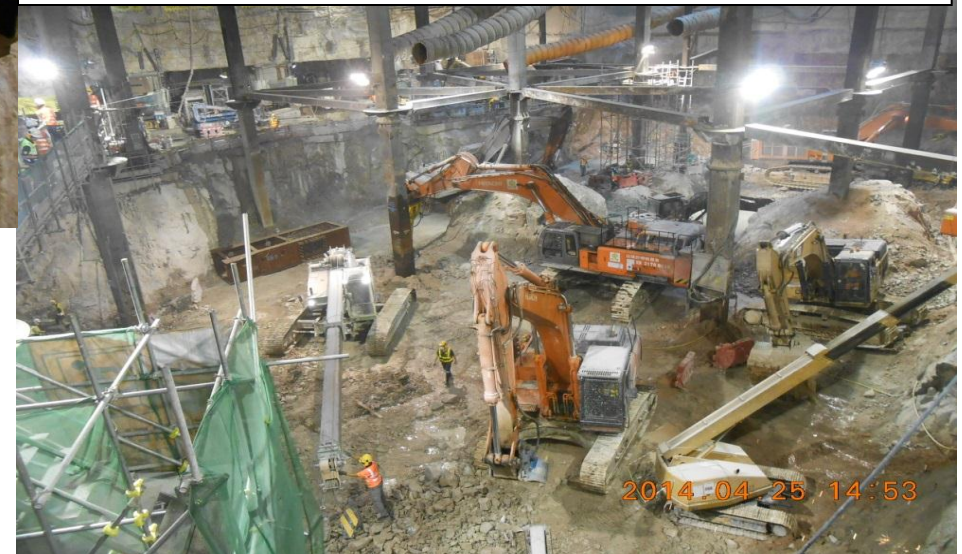


金鐘站 – 隧道支撐架工程及金鐘站擴建部分 Admiralty Station – Underpinning and Station Box

港島綫隧道支撐架橫樑安裝
Island Line underpinning beam installation



車站擴建部分的挖掘工程
Excavation at station box



金鐘站 - 洞穴及隧道 Admiralty Station – Cavern and Tunnels

車站洞穴挖掘已完成
Station cavern excavation completed



地台工程現正進行
Invert slab construction in progress



總結 Summary

- 南區工程進展符合原訂目標
Works within Southern District progressing in line with original schedule
- 南風隧道及金鐘站工程均具挑戰，金鐘站工程較原訂時間滯後約六個月
Challenges at Nam Fung Tunnel and Admiralty Station. The latter part is about 6 months behind programme
- 有待取得更明確的工程進度，預計今年年底確定項目通車安排
Confirmation on programme to opening to be given at the end of this year when there is more certainty of the progress