



觀塘綫延綫項目進展 Kwun Tong Line Extension Progress Update

17 June 2014

MTR Corporation Limited 香港鐵路有限公司



觀塘綫延綫概覽 Kwun Tong Line Extension (KTE) Overview



何文田站 Ho Man Tin Station

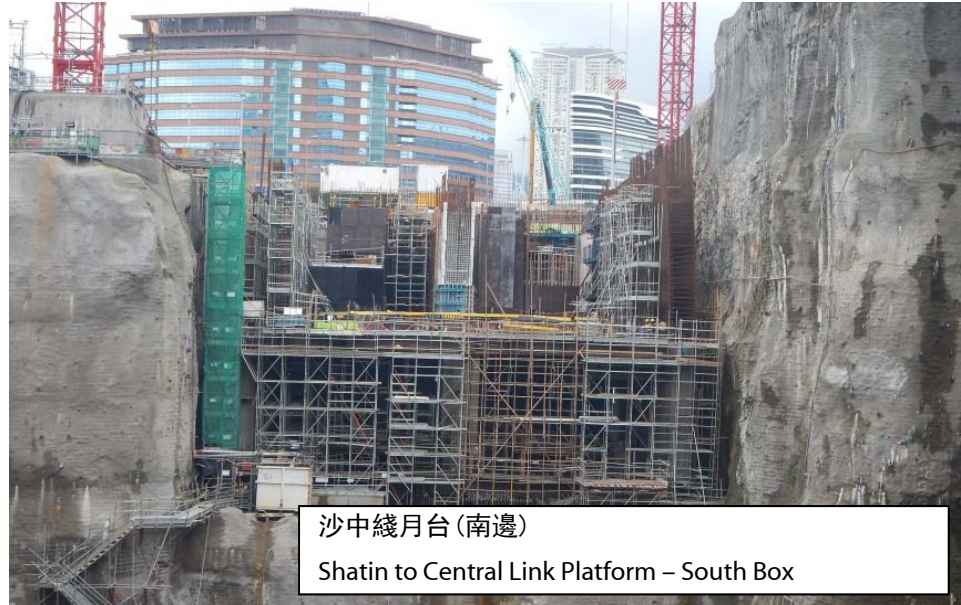


- 車站挖掘工程完成
Ho Man Tin Station formation and excavation completed
- 車站結構完成20%
Ho Man Tin Station structure 20% completed

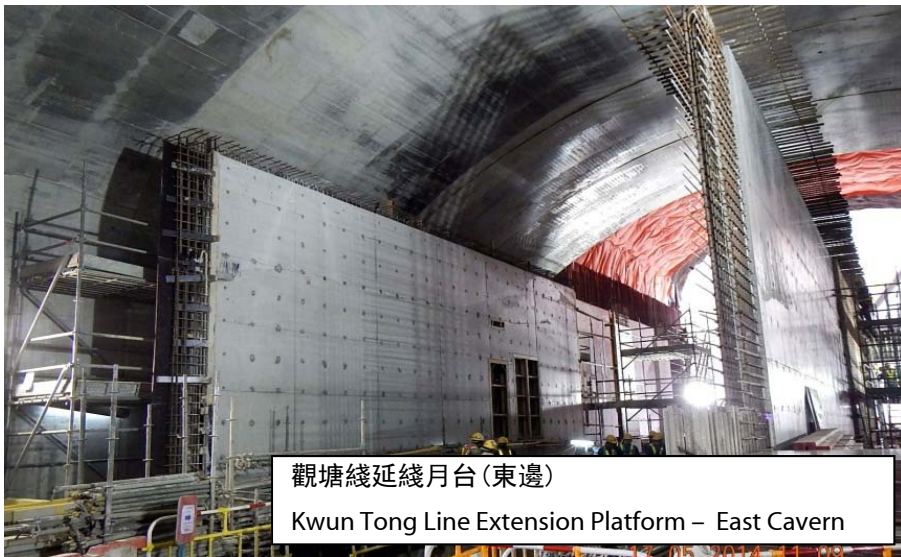
何文田站 Ho Man Tin Station



沙中綫月台(北邊)
Shatin to Central Link Platform – North Box



沙中綫月台(南邊)
Shatin to Central Link Platform – South Box



觀塘綫延綫月台(東邊)
Kwun Tong Line Extension Platform – East Cavern



觀塘綫延綫月台(西邊)
Kwun Tong Line Extension Platform – West Cavern

隧道工程 Tunnel Works

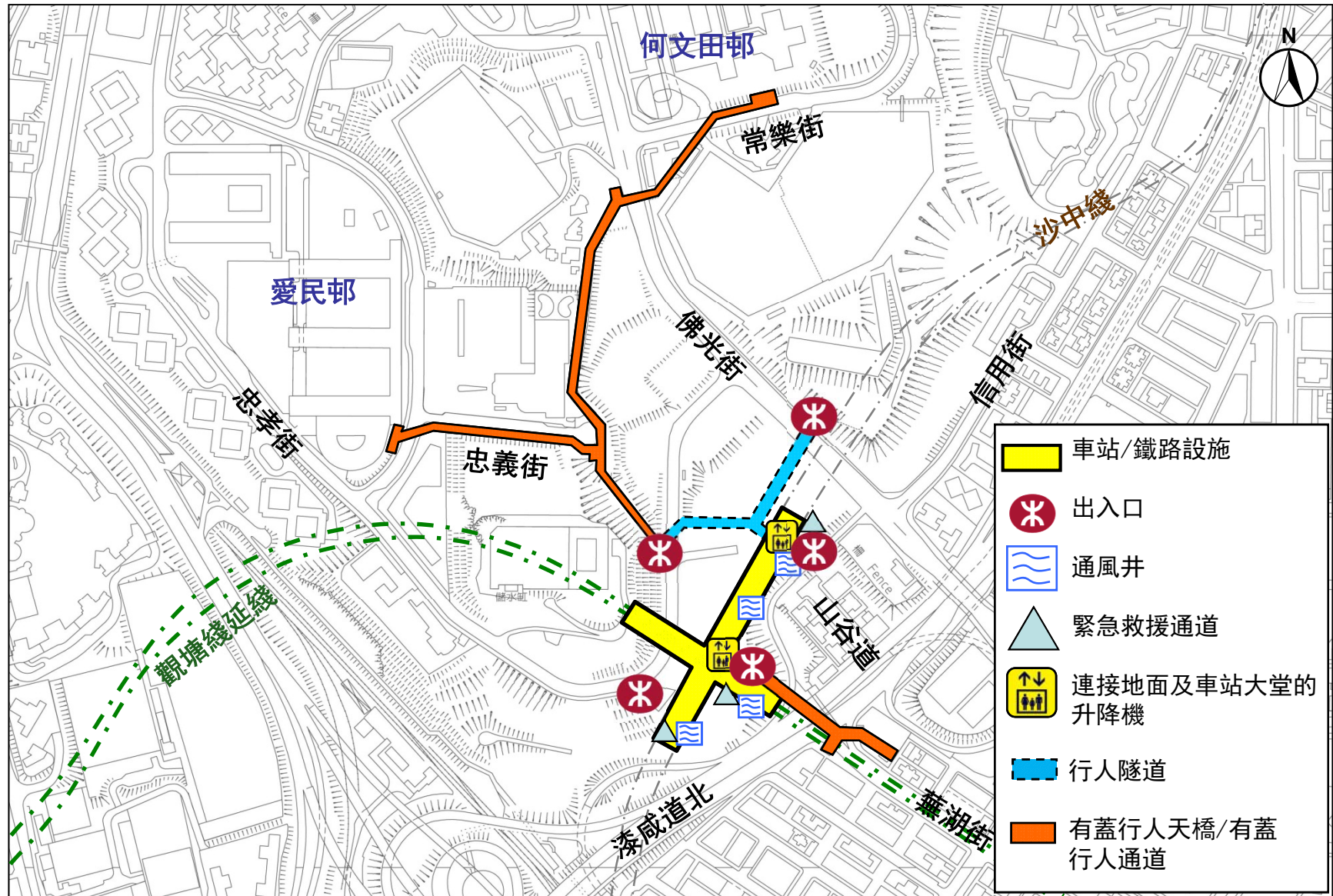


路軌運送 Track delivery



何文田站主要公共基建工程

Essential Public Infrastructure Works for Ho Man Tin Station



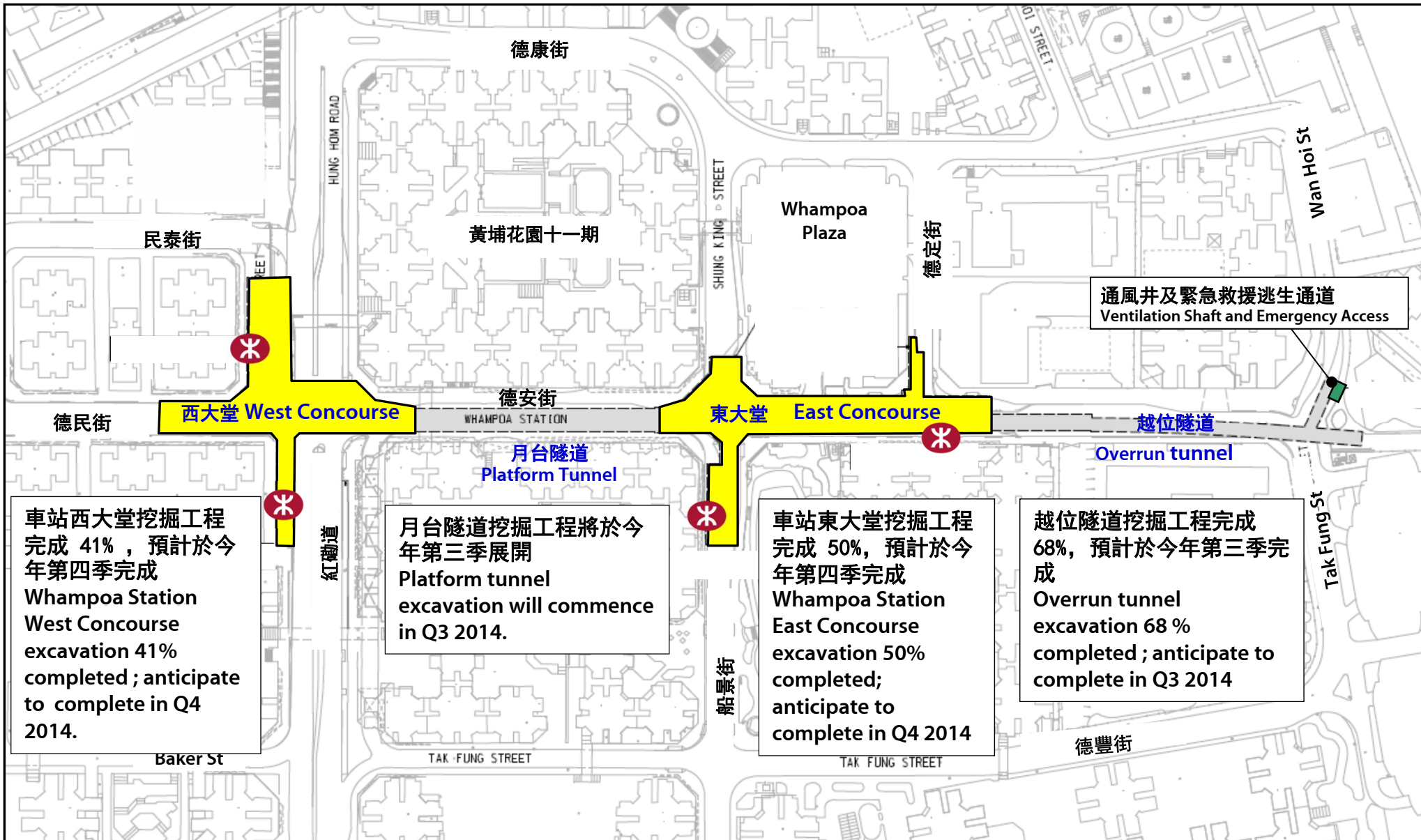
何文田站主要公共基建工程

Essential Public Infrastructure Works for Ho Man Tin Station



16/06/2014

黃埔站進度 Whampoa Station Progress



黃埔站西大堂 Whampoa Station West Concourse



16/06/2014

黃埔站東大堂 Whampoa Station East Concourse



16/06/2014

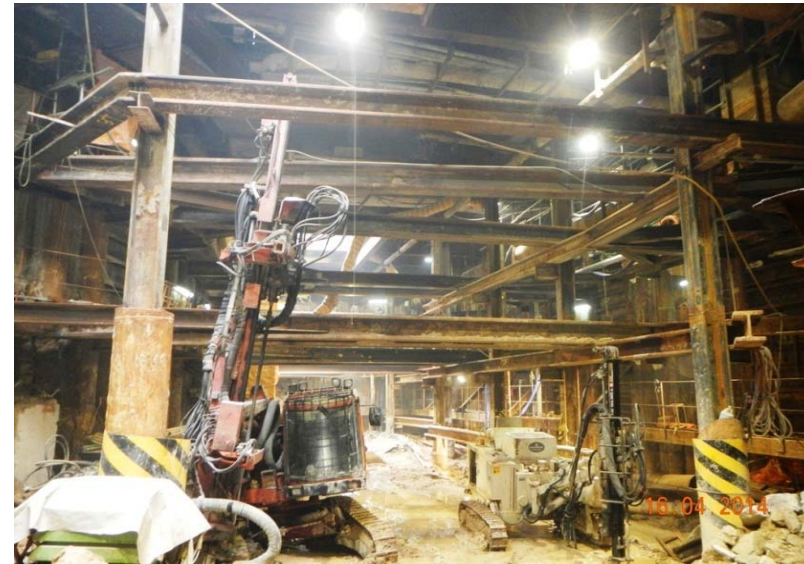
人口密集地區進行交通改道措施及打樁工程

Major TTMS and piling works at congested residential area



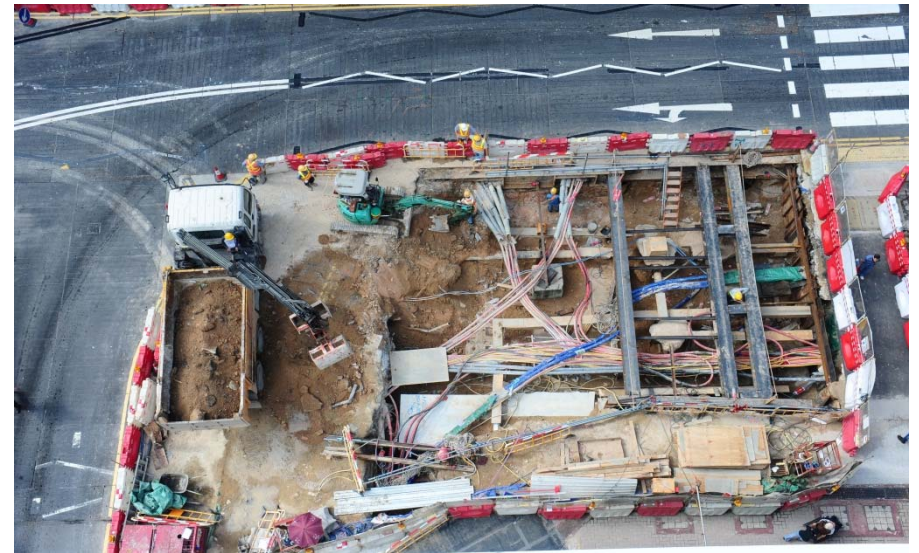
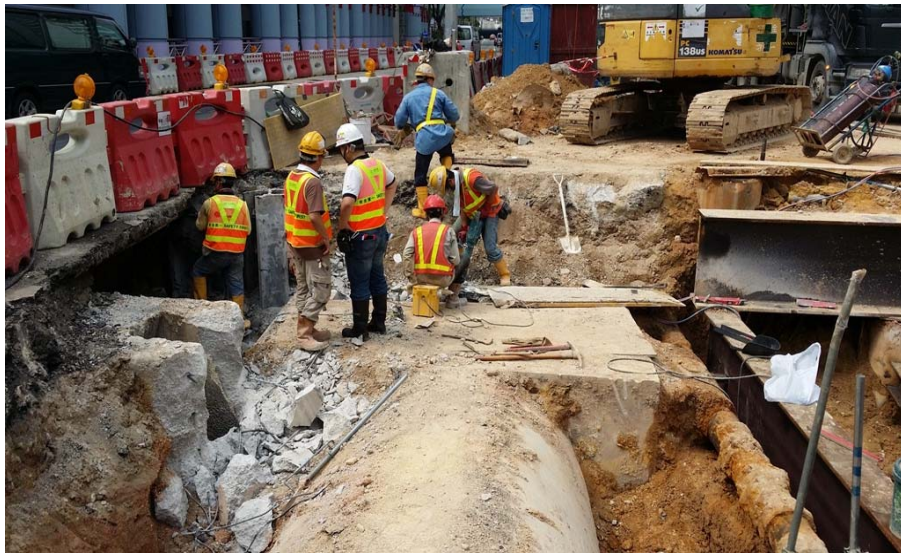
在臨時蓋板以下的有限空間進行挖掘

Limited working space for underground excavation



臨時地下管綫承托及遷移

Temporary Support and Diversion of Major Utilities



總結 Summary

- 黃埔站是觀塘綫延綫最具挑戰性的工程部分，該處工程涉及大量挖掘工序，然而該區樓宇密集、交通繁忙，路面範圍有限，加上地底有大量地下公共管線，必須透過複雜的交通改道等措施才可得到足夠的施工空間以推展工程。

The most challenging part of the Kwun Tong Line Extension Project is the works at Whampoa station where extensive excavation works are carried out under a tight and congested footprint with lots of utilities and traffic diversion stages.

- 工程團隊正努力完成觀塘綫延綫項目；同時仍會繼續堅守「安全第一」的原則，並致力確保工程對附近居民和社區的影響盡量減至最少。

Whilst we are striving to complete the construction works at Whampoa as soon as possible, safety remains our number one priority and we will continue to keep any impact to the community to the minimum possible level.

總結 Summary

- 鑑於黃埔站工程面對的困難，這部份工程於現時滯後約六個月，令觀塘綫延綫項目未能達至原訂2015年通車的目標。

With the difficulties at Whampoa station , Kwun Tong Line Extension project is approximately 6 months behind schedule. As a result, the original 2015 opening date cannot be achieved.

- 我們會在今年年底匯報工程項目的最新情況

We will further update the progress of the project by the end of the year.

多謝