



沙田至中環綫項目進展 Shatin to Central Link Progress Update

立法會交通事務委員會 Legislative Council Panel on Transport
鐵路事宜小組委員會 Subcommittee on Matters Relating to Railways

2014年7月4日
4 July 2014



沙田至中環綫 Shatin to Central Link (SCL)



大圍至紅磡段 Tai Wai to Hung Hom

在大圍連接馬鞍山綫及在紅磡連接西鐵綫
Links up the existing Ma On Shan Line and West Rail Line at Tai Wai and Hung Hom Stations respectively

紅磡至金鐘段 Hung Hom to Admiralty

伸延東鐵綫過海至金鐘
Extension of the existing East Rail Line across the harbour to Admiralty Station

走綫長度 Length of Alignment

全長17公里 Total 17-kilometre

車站 Station

於大圍、顯徑、鑽石山、啟德、土瓜灣、馬頭圍、何文田、紅磡、會展及金鐘設站

Stations will be located at Tai Wai, Hin Keng, Diamond Hill, Kai Tak, To Kwa Wan, Ma Tau Wai, Ho Man Tin, Hung Hom, Exhibition and Admiralty

南北走廊
North South Corridor

- 東鐵綫 East Rail Line
- 沙中綫 (紅磡至金鐘段) SCL (Hung Hom to Admiralty Section)



東西走廊
East West Corridor

- 馬鞍山綫 Ma On Shan Line
- 西鐵綫 West Rail Line
- 沙中綫 (大圍至紅磡段) SCL (Tai Wai to Hung Hom Section)

沙中綫走綫
SCL Alignment

工程進展 Works Progress



顯徑站
地基工程經已完成，進度良好

Hin Keng Station
Piling works are ahead of programme

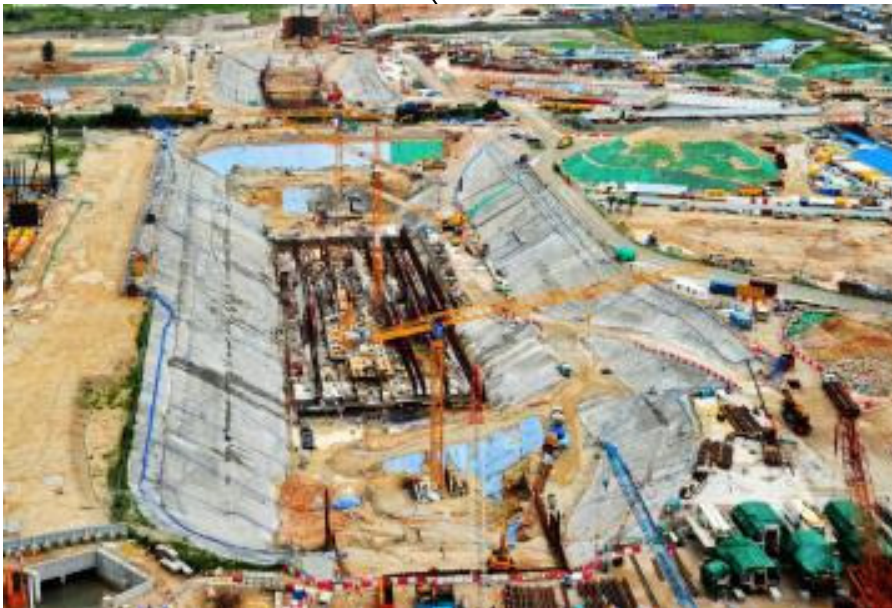


鑽石山站
調整施工工序及方法以追回受地質狀況影響的隔牆工程進度

Diamond Hill Station
Rearrange works sequence and adjust construction method to catch up with the diaphragm wall construction affected by mixed ground conditions

啟德站
開始建造車站結構

Kai Tak Station
Station structure construction commenced



工程進展 Works Progress



顯徑至馬仔坑隧道

- 前期挖掘工程進度受地質狀況影響
- 實施額外保護措施以追回進度

Hin Keng to Ma Chai Hang Tunnels

- Advance excavation works affected by geological conditions
- Implement extra protection measures to catch up with the programme



啟德至鑽石山隧道

鑽挖工程預計於今年第三季展開

Kai Tak to Diamond Hill Tunnels

Tunnel boring anticipated to commence in Q3 2014



鑽石山至馬仔坑隧道

鑽挖工程預計於今年第三季展開

Diamond Hill to Ma Chai Hang Tunnels

Tunnel boring anticipated to commence in Q3 2014

工程進展 Works Progress



考古監察(第三考古工地)

- 正進行考古發掘工作
- 預計2014年第三季完成

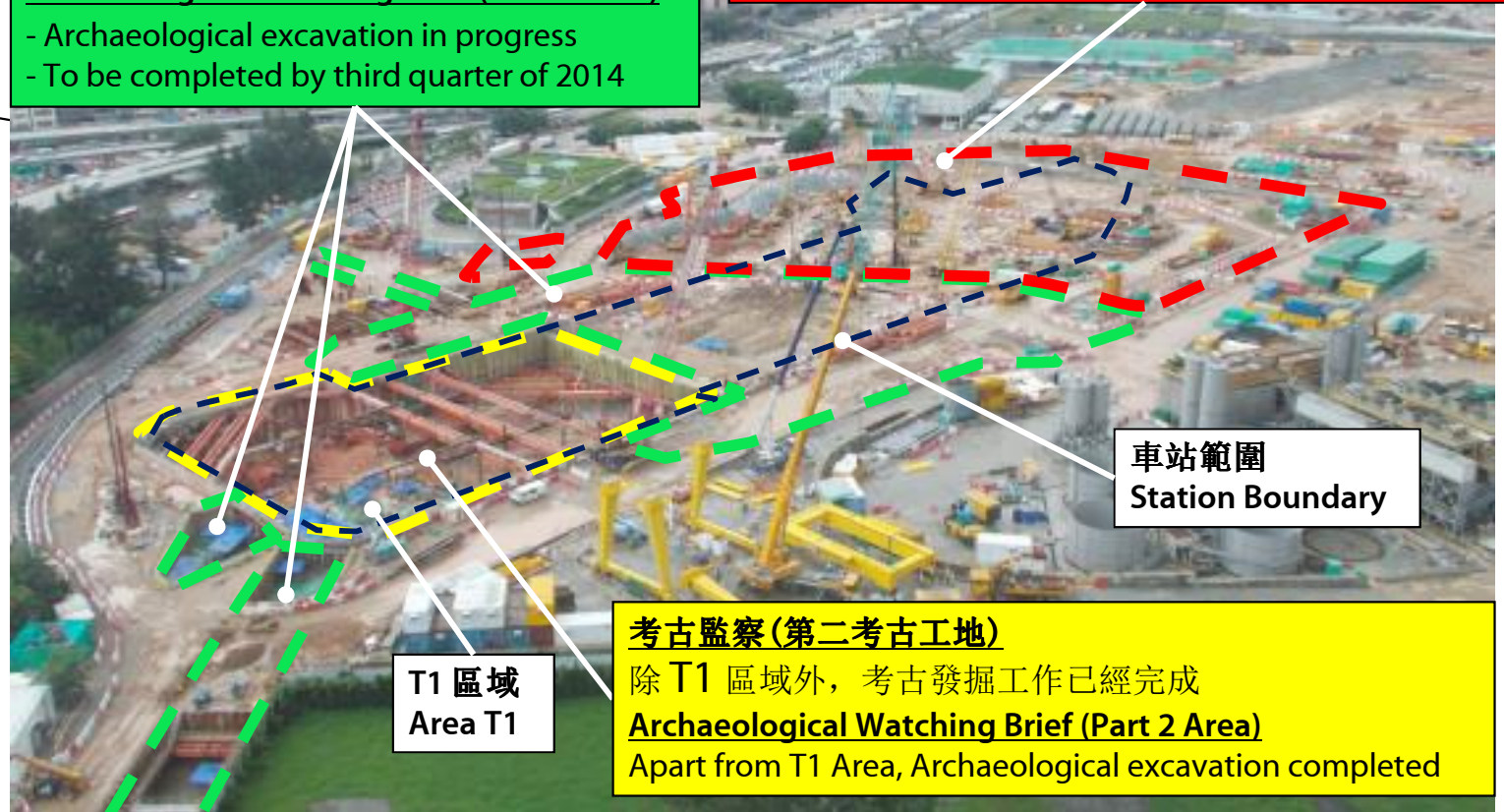
Archaeological Watching Brief (Part 3 Area)

- Archaeological excavation in progress
- To be completed by third quarter of 2014

根據環評報告建議考古發掘範圍 (第一考古工地)

考古調查暨發掘工作至2013年12月完成

Archaeological survey-cum-excavation as per EIA
Archaeological survey-cum-excavation completed on
Dec 2013



考古監察(第二考古工地)

除 T1 區域外, 考古發掘工作已經完成

Archaeological Watching Brief (Part 2 Area)

Apart from T1 Area, Archaeological excavation completed

土瓜灣站及土瓜灣至何文田隧道

- 受擴大考古工作影響, 豎井及車站工程已出現十一個月滯後
- 整體影響須待考古工作全部完成後才能評估

To Kwa Wan Station and To Kwa Wan to Ho Man Tin Tunnels

- Eleven-month delay for launching shaft and station works due to extended archaeological works
- Overall impact can only be assessed after overall completion of archaeological works

考古工作 Archaeological Works

考古區出土文物 Archaeological finds



宋元時期福建磁灶窯陶瓶

Pottery Vase dated to Song-Yuan Dynasties



方形石井遺蹟 (J5)

Stone well in square shape (J5)



磁灶窯青釉四系陶罐

Green glazed pottery jar with four loops, Cizhao Kiln

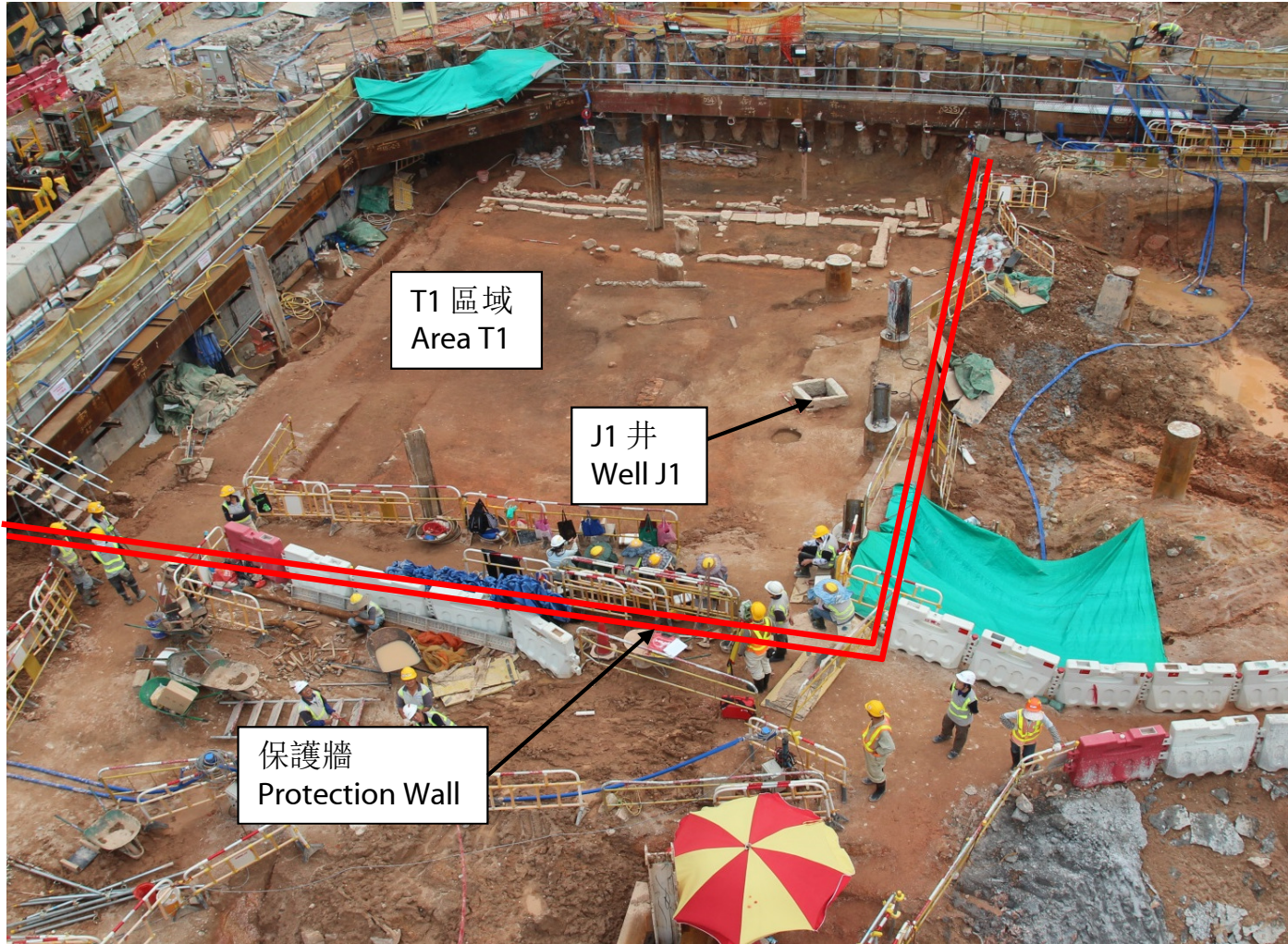
MTR Corporation



T1 區域遺蹟
Finds in Area T1

考古工作 Archaeological Works

T1範圍之保護牆
Protection Wall at Area T1



使用靜音低震鋼板樁機安裝
Adopt silent piler for installation of protection wall

工程進展 Works Progress



馬頭圍站

- 東面垂直隔牆已完成，現正進行西面垂直隔牆工程
- 出現約五個月滯後
- 增加機械及調整工序以追回進度

Ma Tau Wai Station

- Diaphragm wall works in the east side completed and those in the west side in progress
- 5-month behind original programme
- Additional machines and rearranging the sequence of construction activities to catch up with the programme



紅磡站及列車停放處

正進行垂直隔牆及地基改建工程

Hung Hom Station and Stabling Sidings

Diaphragm wall and underpinning works in progress



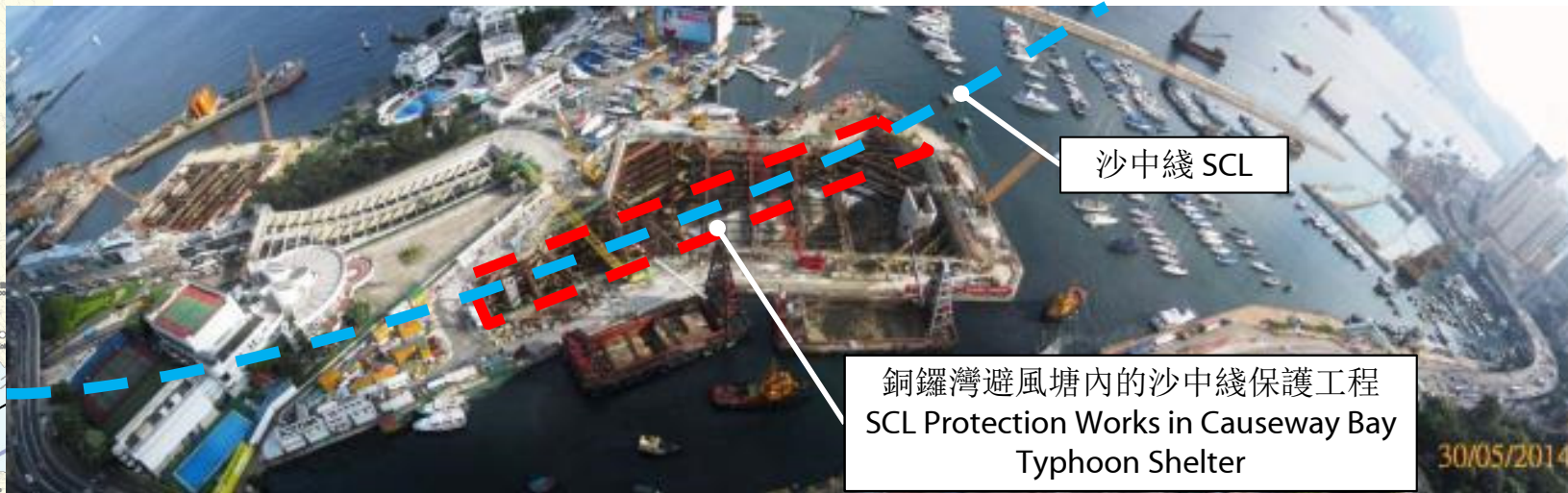
紅磡站以北隧道

漆咸道北進行交通改道

Hung Hom North Approach Tunnels

Traffic diversion in Chatham Road North

工程進展 Works Progress



沙中綫 SCL

銅鑼灣避風塘內的沙中綫保護工程
SCL Protection Works in Causeway Bay
Typhoon Shelter

過海及港島段

- 須配合中環灣仔繞道及灣仔發展計劃第二期
- 部分工地預計須遲六個月才能交予沙中綫工程

Cross Harbour and HK Island Sections

- Interface with Central – Wanchai Bypass and Wan Chai Development Phase II projects
- The date of handing over some works sites to SCL may be delayed by six months



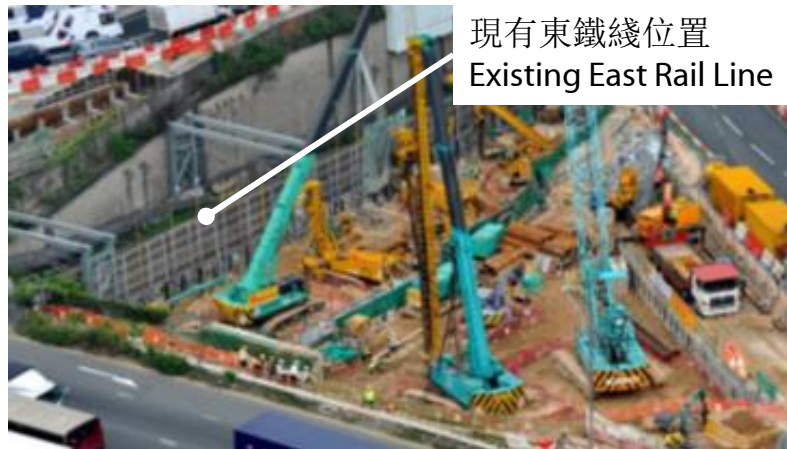
灣仔發展計劃第二期填海區
Wan Chai Development Phase II
reclamation area

會展站位置
Location of Exhibition Station

在營運中鐵路附近進行工程

Works near Operating Railway Lines

- 確保現有鐵路服務不受影響 Ensure existing railway service is not affected
- 大部分工序須於晚上收車後才進行 Most works are carried out during non-traffic hours at night



施工範圍接近現行東鐵綫
Works Sites near East Rail Line



東鐵綫車站月台改建工程
Platform Modification Works at East Rail Line



馬鞍山綫車站月台改建工程
Platform Modification Works at Ma On Shan Line



於鑽石山站內進行改建工程
Modification Works at Diamond Hill Station

重置工程 Reprovisioning of Affected Facilities



新界南動物管理中心及沙田植物檢疫站
New Territories South Animal Management Centre and Sha Tin
Plant Quarantine Station



港灣道體育館及灣仔游泳池
Harbour Road Sports Centre and Wan Chai Swimming Pool

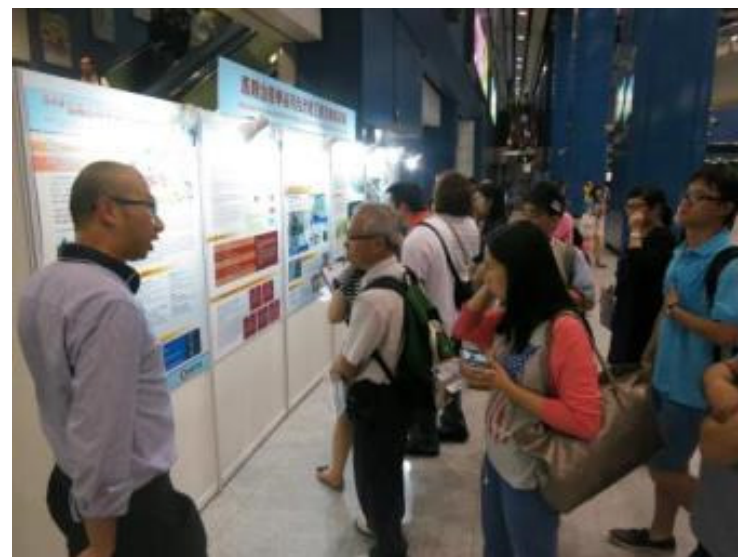


中央郵件中心
Central Mail Centre

社區聯繫 Community Liaison



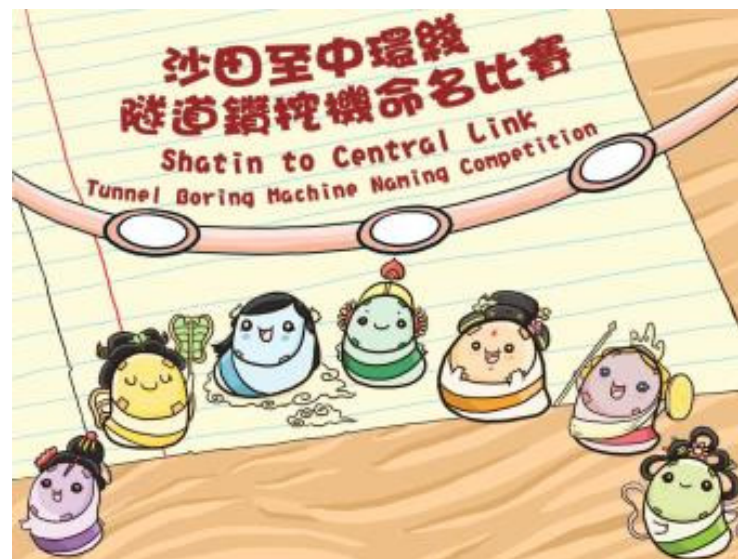
安排關懷大使協助居民及有需要人士
Arranged caring ambassadors to help the residents and people in need



馬鞍山綫車站月台改善工程互動資訊區
Information Zone on Modification Works of the Ma On Shan Line



與區內長者歡度佳節
Celebrated festival with the community



隧道鑽挖機命名比賽
Tunnel Boring Machine Naming Competition

總結 Conclusion

- 沙中綫工程總體進展為16%
 - 「大圍至紅磡段」工程受考古工作影響，已出現約十一個月滯後
 - 部分位於港島的關鍵工地將延遲六個月才交予沙中綫，或影響「紅磡至金鐘段」工程進度
 - 建造業人手短缺，尤其是牽涉專門技術(如隧道建造)而具經驗的人員
 - 港鐵公司會持續檢討進度，適時將相關工程資訊公布
-
- SCL overall works progress: 16%
 - There is eleven-month delay in the progress of Tai Wai to Hung Hom Section due to archaeological works
 - The six-month delay in the handing over of key works sites on HK Island may affect the progress of Hung Hom to Admiralty Section
 - Lack of construction manpower, especially experienced technical/ professional staff member (e.g. tunnel construction)
 - The Corporation will constantly review the progress and communicate the project information in a timely manner