

本署檔案
OUR REF:
來函檔案
YOUR REF:
電話
TEL NO : 3509 8645
圖文傳真
FAX NO : 2136 3304

Environmental Protection Department
Headquarters
15/F & 16/F, East Wing,
Central Government Offices,
2 Tim Mei Avenue,
Tamar, Hong Kong.



CB(1)276/13-14(02)
環境保護署總部
香港添馬
添美道二號
政府總部東翼
十五及十六樓

8 November 2013

Ms. Sharon Chung
Chief Council Secretary (1)6
Legislative Council Secretariat
Council Business Division 1
Legislative Council Complex,
1 Legislative Council Road, Central, Hong Kong

(By Email and by Fax : 2978 7569)

Dear Ms Chung,

**Subcommittee on Country Parks
(Designation) (Consolidation) (Amendment) Order 2013**

**List of follow-up actions arising from the discussion
at the meeting on 6 November 2013**

Further to the meeting of the Subcommittee on Country Parks (Designation) (Consolidation) (Amendment) Order 2013 held on 6 November 2013, we write to provide further information on the issues raised at that meeting.

Maps of the Sai Kung East Country Park ("SKECP") (Plan No. CP/SK(E)^A and Plan No. CP/SK(E)^B)

In response to members' request, enclosed please find the following maps for reference

- (a) Plan No. CP/SK(E)^A approved on 17 January 1978 by the Governor in Council (at **Annex A**); and
- (b) Plan No. CP/SK(E)^B approved on 7 May 2013 by the Chief Executive in Council (at **Annex B**).

Section 3(2) of the Country Parks (Designation) (Consolidation) (Amendment) Order seeks to amend item 6 of the Schedule of the Country Parks (Designation) (Consolidation) Order (Cap. 208 sub. leg. B) to replace the original approved map in respect of SKECP (i.e. Plan No. CP/SK(E)^A) with its new approved map (i.e. Plan No. CP/SK(E)^B). After the amendments, an area of about 16.55 hectare of the country park enclave at Sai Wan will be incorporated into the boundary of the SKECP.

Background Information on the Kam Shan Country Park ("KSCP"), the SKECP and the Tai Lam Country Park ("TLCP")

Below is some background information on the KSCP, the SKECP and the TLCP : -

The KSCP was designated on 24 June 1977 and has an area of about 337 hectares. There is only one enclave of KSCP, which is the location currently proposed for incorporation into the KSCP. The enclave was once erected with telecommunication facilities. On the draft map gazetted in December 1976, the enclave had already been excluded from the proposed KSCP.

The SKECP was designated on 3 February 1978 and has an area of about 4,477 hectares. There are eleven country park enclaves surrounded by or adjacent to the SKECP. Apart from Sai Wan, the remaining ten are (i) Pak A; (ii) Tung A; (iii) Pak Lap; (iv) To Kwa Ping; (v) Chek Keng; (vi) Tung Sam Kei; (vii) Ko Lau Wan, Mo Uk, Lam Uk and Tse Uk; (viii) site near Wong Mau Kok; (ix) Pak Tam Au; and (x) Tai Tan, Uk Tau, Ko Tong and Ko Tong Ha Yeung (the last two are also adjacent to the Sai Kung West Country Park).

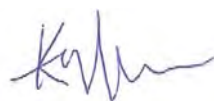
The TLCP was designated on 23 February 1979, and was amended on 7 April 1995 to accommodate the development of Route Three as well as other changes, changing the area from about 5,330 hectares to about 5,370 hectares. There are five country park enclaves surrounded by or adjacent to the TLCP. Apart from Yuen Tun, the remaining four are Tin Fu Tsai, Tsing Fai Tong, Sheung Tong and Sheung Fa Shan. Yuen Tun enclave has been allocated to the Civil Aid Service as an outdoor training camp since 1975.

Discussion between Hong Kong Government and Heung Yee Kuk in the 1970s

Since 1977, the Government has been designating country parks in accordance with the provisions of the Country Parks Ordinance (including publishing in the Gazette and making a copy of the draft map available for inspection by the public, hearing of objections by the then Country Parks Board and submission of the draft map with a schedule of objections and representations to the then Governor in Council for approval). On member's request for the minutes of meetings between the Hong Kong Government and Heung Yee Kuk in the 1970s regarding the designation of land as country parks, given an application for leave to apply for judicial review has been submitted, in order not to affect the relevant legal proceedings, we cannot disclose any information at the present stage.

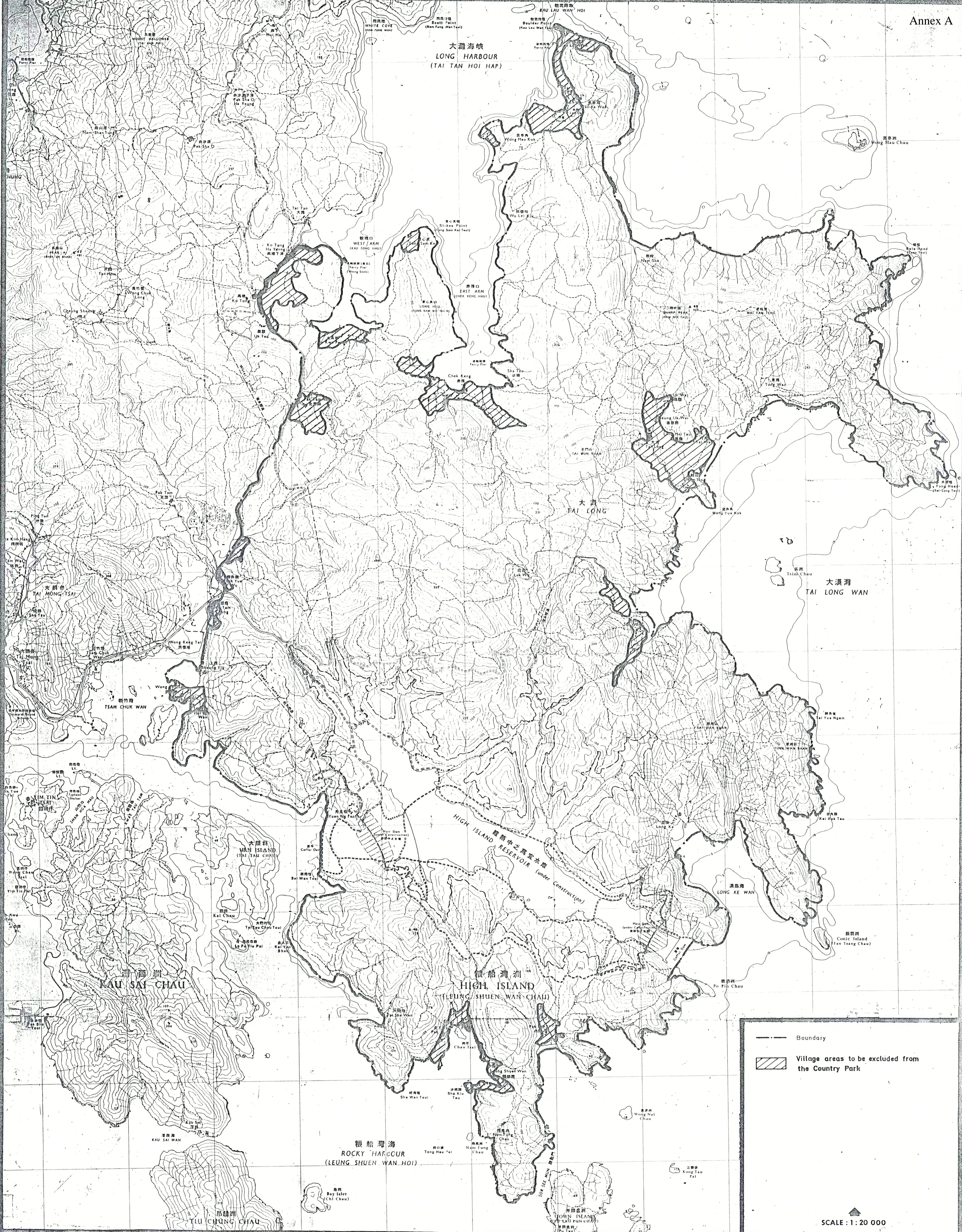
One point we must emphasize is that owing to the quickened pace of urbanisation, some country park enclaves are facing increasing development pressure. Developments in these enclaves, however, may not be compatible with the natural environment of the country parks, or may degrade the integrity and the aesthetic and landscape quality of the country parks as a whole. After the Sai Wan incident, there has been public expectation on the Government to better protect the country park enclaves and safeguard them against any development that would undermine public enjoyment of the natural environment. The Government pledged in the 2010-11 Policy Address to either include the enclaves in country parks, or determine their proper use through statutory planning so as to meet conservation and social development needs. After assessments, the country park enclave at Sai Wan is considered to be suitable for inclusion into country park. Moreover, as repeatedly explained in our follow up letter on 1 November and at the Subcommittee meetings, incorporating private land in enclaves into country parks is by no means depriving the ownership of the private land, nor would the incorporation revert the land back to the Government. The private lands within country parks are mostly governed by lease conditions and the Country Parks Ordinance.

Yours sincerely,



(Miss Sian LI)

for Director of Environmental Protection



THIS PLAN WAS APPROVED ON THE 23rd JANUARY, 1978 BY THE GOVERNOR-IN-COUNCIL IN ACCORDANCE WITH SECTION 13 OF THE COUNTRY PARKS ORDINANCE 1976.

[Signature]
COUNTRY PARKS AUTHORITY

DATE 3rd February, 1978

SAI KUNG EAST COUNTRY PARK

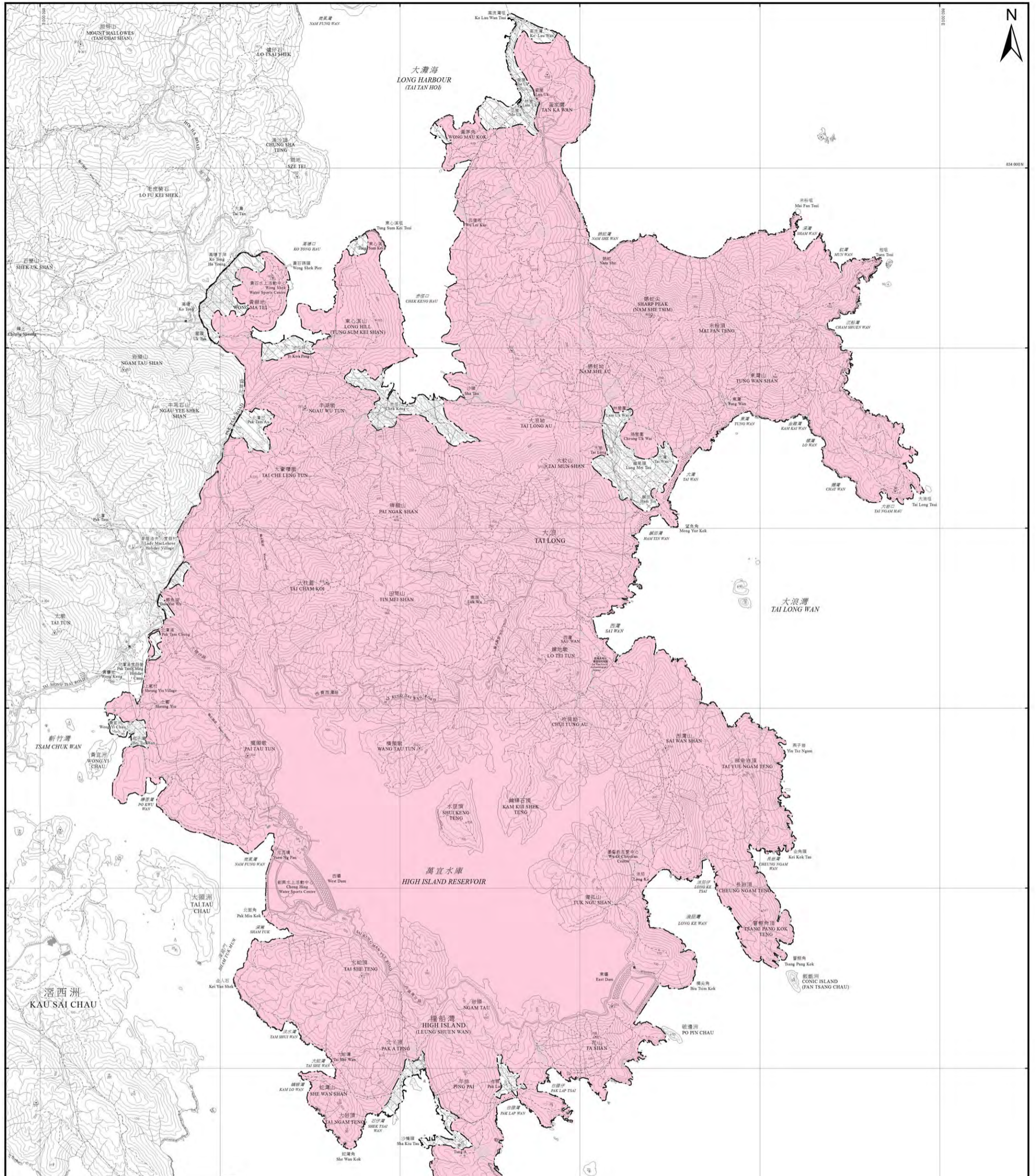
Plan No. CP/SK(E)^A

Date: July, 1977



Country Parks Division
A. F. D.

SCALE: 1:20 000



註釋
NOTATION

 西貢東郊野公園
SAI KUNG EAST COUNTRY PARK

 不包括部分
AREA EXCLUDED

底圖為 1:20 000 數碼地形圖 (B20000) 圖則編號 8 和 12，由地政總署測繪處提供。
BASE MAP REPRODUCED FROM SHEET Nos. 8 AND 12 OF THE 1:20 000 DIGITAL TOPOGRAPHIC MAP (B20000) OF THE SURVEY AND MAPPING OFFICE, LANDS DEPARTMENT.

本圖則已於二零一三年五月七日經由行政長官會同行政會議根據郊野公園條例第十三條批准。
THIS PLAN WAS APPROVED ON 7 MAY 2013 BY THE CHIEF EXECUTIVE IN COUNCIL IN ACCORDANCE WITH SECTION 13 OF THE COUNTRY PARKS ORDINANCE.

郊野公園及海岸公園管理局總辦
COUNTRY AND MARINE PARKS AUTHORITY
日期：二零一三年五月八日
DATE: 8 MAY 2013

米 500 0 500 1000 1500 2000 米
Metres

香港特別行政區政府版權 二零一二年
© Hong Kong Special Administrative Region Government 2012

西貢東郊野公園
SAI KUNG EAST COUNTRY PARK

檔案編號 FILE REF. AF GR CPA/02/9/0
圖則編號 PLAN No. CP/SK(E)^B

比例 SCALE 1:20 000
製圖日期 COMPILED 10. 2012

漁農自然護理署
AGRICULTURE, FISHERIES AND CONSERVATION DEPARTMENT