

For discussion on
23 July 2014

Legislative Council Panel on Home Affairs

**Signature Project Scheme (Wong Tai Sin District) –
Expansion and Improvement of Wong Tai Sin Square**

PURPOSE

This paper seeks Members' views on one of the proposed projects of the Wong Tai Sin District under the Signature Project Scheme ("SPS") – "Expansion and Improvement of Wong Tai Sin Square".

PROPOSALS AND JUSTIFICATIONS

2. The Wong Tai Sin Square ("WTS Square") occupies a site area of 3 300 square metres ("m²") and is a conveniently located and highly utilized public open space in the district. At present, the WTS Square does not have a permanent and covered performance stage. Event organizers often have to set up stages and covers for one-off uses. Also, the covered walkway at the WTS Square, which connects the Wong Tai Sin Mass Transit Railway Station and the Shatin Pass Road, is occupying about 330 m² (i.e. 10%) of the WTS Square, limiting the use of the venue for organization of activities.

3. As such, the Wong Tai Sin District Council ("WTSDC") proposes to undertake "Expansion and Improvement of Wong Tai Sin Square" under the SPS. The proposed scope of works includes:

(a) expansion of the WTS Square by about 15 metres to its north;

(b) construction of a permanent and covered performance stage¹ at

¹ Dressing rooms, electrical switch room, store room and fire service pump room will also be provided under the construction of performance stage.

the WTS Square with sound system;

- (c) construction of a tensile fabric cover over the spectator area;
- (d) reprovisioning and widening of the ramp leading to the Shatin Pass Road;
- (e) relocation of furniture at the WTS Square, including planters, flag poles, lamps and benches, etc., having regard to the expansion works; and
- (f) provision of U-channels and down pipes to collect and divert rainwater to avoid rainwater from flooding the Shatin Pass Road during heavy downpour.

The site plan and artist's impressions showing the proposed works are at **Annex 1** and **Annex 2** respectively.

FINANCIAL IMPLICATION

4. Under the SPS, an one-off allocation of \$100 million would be earmarked for each of the 18 districts. The estimated cost for works and related items under the "Expansion and Improvement of Wong Tai Sin Square" is \$31 million in money-of-the-day prices. In addition, a provision of \$1.2 million will be earmarked for hiring non-civil service contract staff and implementing publicity programmes for the project. The remaining funding will be earmarked for implementing the other SPS project of the Wong Tai Sin District – "Enhancement of Leisure Facilities of Morse Park", which will be submitted separately to the Finance Committee ("FC") of the Legislative Council ("LegCo") for funding approval tentatively by mid-2015. The breakdown of budget is at **Annex 3**.

5. The additional recurrent cost incurred arising from the proposed works project is about \$0.5 million per annum.

IMPLEMENTATION

6. Subject to the funding approval by the FC of the LegCo, we plan to commence the construction works in April 2015 for completion in March 2016.

PUBLIC CONSULTATION

7. The WTSDC consulted the four Area Committees (“ACs”) of Wong Tai Sin District in March 2013 and has obtained support from the ACs. The WTSDC then formally endorsed the aforementioned project on 26 March 2013.

WAY FORWARD

8. Subject to Members’ comments, we will submit the proposal for the consideration of the Public Works Sub-committee (“PWSC”) and the FC of the LegCo in the next legislative session.

ENHANCEMENT OF LEISURE FACILITIES OF MORSE PARK

9. As mentioned in paragraph 4 above, apart from “Expansion and Improvement of Wong Tai Sin Square”, the WTSDC also proposed taking forward the “Enhancement of Leisure Facilities of Morse Park” which mainly aims at improving facilities at the amphitheatre in the Morse Park No. 4. We intend to consult Members on the project in mid-2015, and then submit the proposal to the PWSC and FC of the LegCo for consideration.

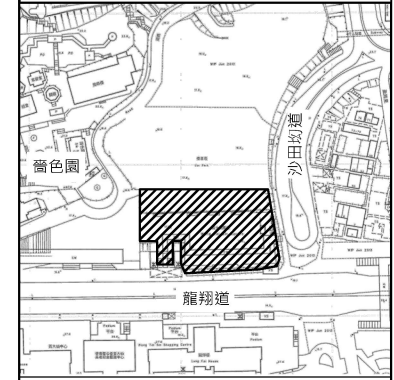
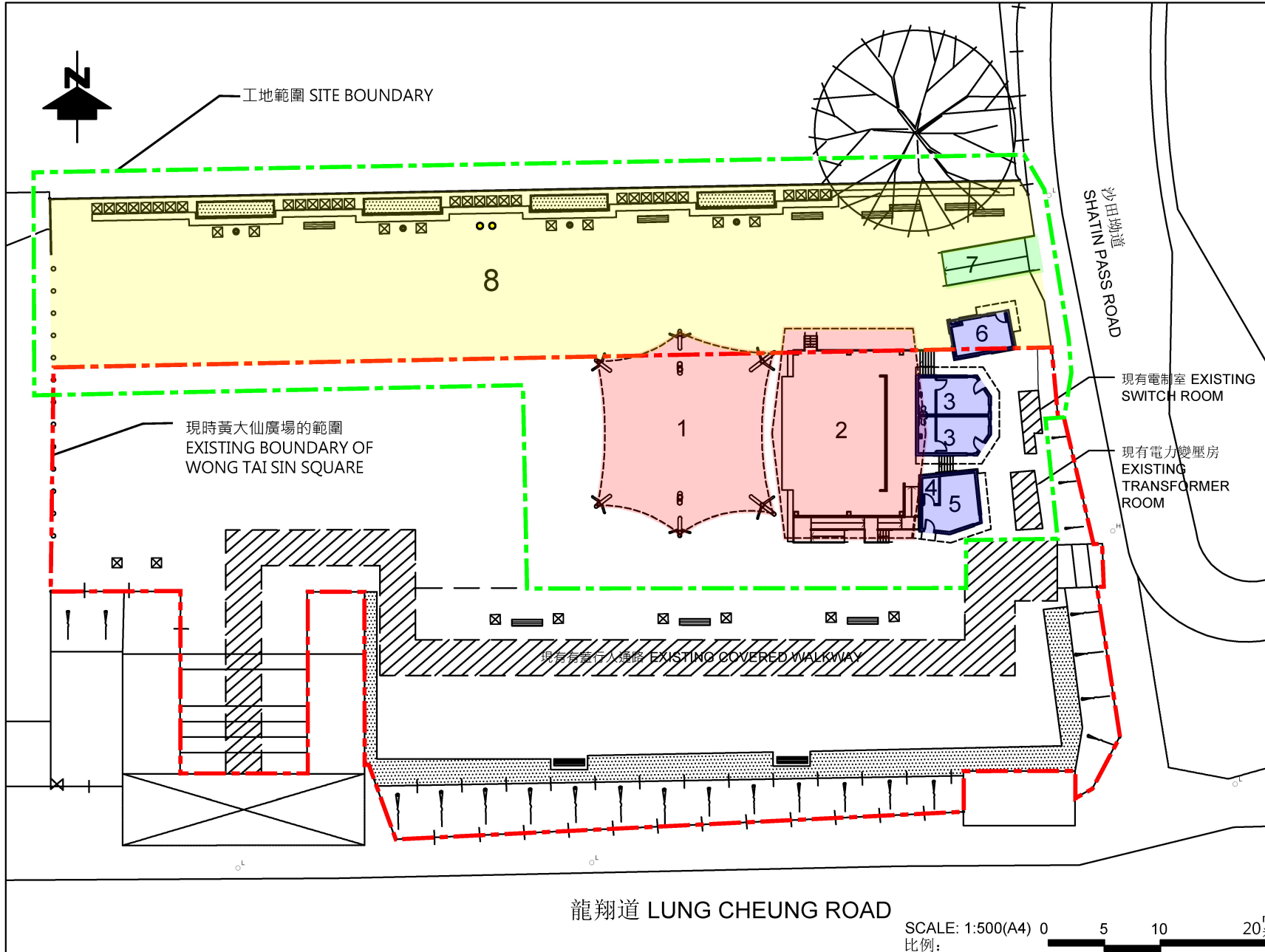
BACKGROUND

10. The Chief Executive announced in his 2013 Policy Address that an one-off allocation of \$100 million would be earmarked for each district to carry out one to two projects under the SPS. All the projects are proposed, discussed and agreed by the District Councils (“DCs”) before they are put to implementation. The DC must be satisfied that the project(s) would address local needs, and have a visible and lasting impact on the community.

Depending on the DC's views and needs of the district, an SPS project may be works or non-works in nature, or a mixture of both.

11. All the 18 DCs have agreed on the preliminary proposals of their SPS projects. With Members' support in January 2014, the works component of one of the SPS projects, that is, the one in Kwai Tsing District has been endorsed by the PWSC on 19 March 2014 and is awaiting funding approval of the FC of the LegCo. The Home Affairs Department and respective District Offices are working closely with the DCs, relevant government bureaux and departments and where applicable, partner organization(s) in taking forward the other projects, including examining their technical feasibility, before seeking Members' views and the funding approval from the FC. A list of the proposed projects of the 18 districts is at **Annex 4** for reference.

Home Affairs Bureau
Home Affairs Department
July 2014



LOCATION PLAN 位置圖 SCALE: 1:5000 比例:

圖例 LEGEND

- 1 拉力帳篷上蓋 TENSILE FABRIC COVER
- 2 有蓋舞台 COVERED PERFORMANCE STAGE
- 3 更衣室 DRESSING ROOM
- 4 電制室 ELECTRICAL SWITCH ROOM
- 5 儲物室 STORE ROOM
- 6 消防泵房 FS PUMP ROOM
- 7 斜道 RAMP
- 8 擴建15米連地台瓦面及重置現有的花槽、旗杆及長櫈 15M EXTENSION WITH NEW PAVING AND RELOCATED PLANTERS, FLAG POLES AND BENCHES

SCALE: 1:500(A4) 0 5 10 20m 比例:

7455RO

黃大仙廣場擴闊及改善工程
EXPANSION AND IMPROVEMENT OF WONG TAI SIN SQUARE



HOME AFFAIRS DEPARTMENT
民政事務總署

DRAWING NO.:
圖則編號:
WTSSPS001-SK002-20140611

TITLE:
標題:
SITE PLAN
平面圖



7455RO
黃大仙廣場擴闊及改善工程
EXPANSION AND IMPROVEMENT OF WONG TAI SIN SQUARE


HOME AFFAIRS DEPARTMENT
民政事務總署

DRAWING NO.:
圖則編號:
WTSSPS001-SK003-20140611
TITLE: ARTIST'S IMPRESSION
標題: (FACING NORTHEAST)
外觀構思圖(面向東北方)



7455RO
黃大仙廣場擴闊及改善工程
EXPANSION AND IMPROVEMENT OF WONG TAI SIN SQUARE


HOME AFFAIRS DEPARTMENT
民政事務總署

DRAWING NO.:
圖則編號:
WTSSPS001-SK004-20140611
TITLE: ARTIST'S IMPRESSION
標題: (FACING SOUTHEAST)
外觀構思圖(面向東南方)



7455RO

黃大仙廣場擴闊及改善工程

EXPANSION AND IMPROVEMENT OF WONG TAI SIN SQUARE



HOME AFFAIRS DEPARTMENT
民政事務總署

DRAWING NO.:

圖則編號:
WTSSPS001-SK005-20140611

TITLE: ARTIST'S IMPRESSION
標題: (BIRD'S EYE VIEW)
外觀構思圖(鳥瞰圖)

**Overview of the Estimated Cost
of the Wong Tai Sin Signature Project Scheme Projects**

Items	Estimated Cost
A. Expansion and Improvement of Wong Tai Sin Square	
Works and Related Items	\$31.0 million (in money-of-the-day prices)
Publicity/Community Involvement Activities	\$0.3 million
Non-Civil Service Contract Staff	\$0.9 million
Total	\$32.2 million
B. Enhancement of Leisure Facilities of Morse Park¹	
Total	\$67.8 million
Total Estimated Cost of the Two Signature Project Scheme Projects	\$100 million

¹ The estimated cost of the project is only a rough indication. A realistic estimate will be provided when the relevant technical feasibility study and detailed design have been completed.

**Signature Project Scheme
List of Preliminary Proposals from 18 Districts**

District	Title	Description
Central and Western	Harbourfront enhancement and revitalisation at the Western Wholesale Food Market	Enhancement and revitalization of the harbourfront area adjoining the Western Wholesale Food Market as a vibrant promenade and open space for public enjoyment, with myriad community involvement activities to promote vibrancy of the harbour.
Wan Chai	Moreton Terrace Activities Centre	Provision of a performance and activity venue at Moreton Terrace for organizing a wide range of community building, cultural and leisure activities for local residents.
Eastern	Eastern District Cultural Square	Construction of Eastern District Cultural Square to provide open space which could be used for, inter alia, cultural activities; and to revitalise the waterfront and promote the tourism of the Eastern District.
Southern	Development of seafood dining facilities near the Aberdeen Wholesale Fish Market	Development of seafood dining facilities near the Aberdeen Wholesale Fish Market with a view to promoting and highlighting the fishermen culture of the Southern District.
Kwun Tong	Construction of music fountains at Kwun Tong Promenade	Construction of music fountains with integration of dynamic lighting, musical features and special effects riding on the promenade of Kwun Tong with a view to making it a place for public leisure and enjoyment of harbour views.
	Construction of lift tower at Shung Yan Street in Kwun Tong	Construction of a lift tower at Shung Yan Street in Kwun Tong to enhance the overall barrier free access facilities at Hong Ning Road Recreation Ground which is a key pedestrian access connecting the nearby public rental housing estates where a large number of elderly residing and the Kwun Tong Town Centre so as to help the elderly and physically impaired integrate into the community.

District	Title	Description
Wong Tai Sin	Expansion and improvement of Wong Tai Sin Square	Expansion and improvement of Wong Tai Sin Square with a view to allowing organizations to better utilize this ideal venue of the district for hosting community events.
	Enhancement of leisure facilities of Morse Park	Enhancement of facilities at the amphitheatre at Morse Park No. 4 for hosting district- and territory-wide events.
Kowloon City	Revitalisation of the rear portion of the Cattle Depot	Revitalisation of the rear portion of the Cattle Depot to make available an open space for recreation purpose in the To Kwa Wan area, and to facilitate the promotion of arts and culture to the community as well as the unique background of the Cattle Depot.
Sham Shui Po	Shek Kip Mei Community Services Centre	Construction of a community services centre in Shek Kip Mei to provide various community services to meet local needs and enhance service coverage in the district.
	Mei Foo Neighbourhood Activity Centre	Construction of a neighbourhood activity centre at Mei Foo with multi-purpose rooms for holding various activities for local residents.
Yau Tsim Mong	Multicultural activity venue at Battery Street	Development of a multicultural activity venue at Battery Street to promote cultural diversity and advance social cohesion in Yau Tsim Mong district. Community involvement and publicity activities will be organised to enhance mutual understanding between different ethnic groups and the mainstream community in the district, and to illustrate the multicultural characteristics of the district.
Sha Tin	Revitalization of Shing Mun River promenade near Sha Tin town centre	Revitalization of Shing Mun River promenade near Sha Tin town centre to enhance public enjoyment.
	Decking of Tai Wai Nullah in Sha Tin	Decking of Tai Wai Nullah in Sha Tin for provision of recreation facilities.
Tai Po	Establishment of an art development centre by retrofitting Tai Po Government Secondary	Establishment of an art development centre by retrofitting Tai Po Government Secondary School, which will cease operation and will be vacated after the summer holiday of 2014, to facilitate the

District	Title	Description
	School	further development of arts and culture in Hong Kong, and in particular, Tai Po District.
	Improving the tourist facilities at Lam Tsuen Wishing Square	Improving the tourist facilities at Lam Tsuen Wishing Square with an aim to preserve and further promote the unique culture in Tai Po on wish-making.
North	Improvement of trails and provision of ancillary facilities at Wu Tip Shan and Wa Mei Shan in Fanling	Improvement of trails and provision of ancillary facilities at Wu Tip Shan and Wa Mei Shan in Fanling to encourage healthy living, promote tourism and establish a landmark in the district.
	Improvement of trails and provision of facilities in Sha Tau Kok	Improvement of trails and provision of facilities in areas in Sha Tau Kok adjoining the Double Haven Marine Park and Geo-Area of the Hong Kong Global Geopark of China to promote eco-tourism and support the continual recognition of the area by the Global Geoparks Network by United Nations Educational, Scientific and Cultural Organisation.
Sai Kung	Reconstruction of the Sharp Island Pier	Reconstruction of the Sharp Island Pier so as to respond to the strong district aspiration and promote local tourism in Sai Kung.
	Construction of the Tseung Kwan O Heritage Hiking Trail (including Duckling Hill, former Tiu Keng Leng Police Station, Mau Wu Shan Observation Post and other monuments) and History and Heritage Information Centre	Construction of the Tseung Kwan O Heritage Hiking Trail and History and Heritage Information Centre with a view to re-capturing the heritage of Tseung Kwan O.
Kwai Tsing	Enhancement of Community Healthcare ^{Note 1}	Provision of comprehensive community healthcare service such as disease prevention, dental care service, ophthalmic care service, household visits, health education and assessment to local residents; and installation of fitness equipment and information kiosks at suitable locations in the district.

District	Title	Description
Tsuen Wan	Redevelopment of the Sai Lau Kok Garden	To redevelop the Sai Lau Kok Garden by raising a part of it to become a podium garden with connection to the existing footbridge network outside the Tsuen Wan MTR station, and to construct a multi-purpose centre, including an indoor multi-purpose room, at ground level.
Tuen Mun	Revitalization of Tuen Mun River and surrounding areas	Revitalisation of Tuen Mun River and surrounding areas to make livelier areas along the shores of the Tuen Mun River and surrounding areas by incorporating cultural elements.
	Promotion of youth development in Tuen Mun	Promotion of youth development to provide additional venue(s) with comprehensive facilities for young people to fully explore and develop their different potential.
Yuen Long	Construction of a Yuen Long District Community Services Building	Construction of Yuen Long District Community Services Building to provide more premises for delivering enhanced community services to meet the needs of the increasing population in the district, notably from the youth, ethnic minority and new arrival communities.
Islands	Improvement works at Silvermine Bay Beach, Mui Wo	Improvement works at Silvermine Bay Beach, Mui Wo with a view to improving the beach facilities so as to better serve the visiting public while adopting a more modern and aesthetically pleasing design.
	Yung Shue Wan Library cum Heritage and Cultural Showroom, Lamma Island	Redevelopment of the North Lamma Public Library building at Yung Shue Wan, Lamma Island to increase the floor space to house the library and a showroom for relics and photos of Lamma Island to enable residents and tourists having an overview of the island's heritage and major scenic spots upon disembarking from the pier.

Note 1: With members' support given on 10 January 2014, the Legislative Council Public Works Subcommittee endorsed the works components of the Signature Project Scheme project of Kwai Tsing District on 19 March 2014; and the project is awaiting the funding approval of the Finance Committee.