

LEGISLATIVE COUNCIL BRIEF

**Immigration (Anchorage and Landing Places)
(Amendment) Order 2014**

INTRODUCTION

The Secretary for Security has made the Immigration (Anchorage and Landing Places) (Amendment) Order 2014 (the Amendment Order) in exercise of the power under section 60 of the Immigration Ordinance (Cap. 115) for re-configuring the existing Eastern Immigration Anchorage (EIA). A copy of the Amendment Order is at **Annex A**.

JUSTIFICATIONS

2. The first berth of the Kai Tak Cruise Terminal (KTCT) has started operation since June 2013. With construction works now in the final stage, the second berth is planned to be commissioned in 2014. Both berths are expected to accommodate the largest cruise liner in the world to convey passengers between Hong Kong and the Mainland or overseas countries.

3. For the cruise liner using the second berth of KTCT, its vessel maneuvering basin in future will overlap with the existing EIA (see **Annex B**) as specified in Schedule 1 to the Immigration (Anchorage and Landing Places) Order (Cap. 115C). To ensure the safety of vessels using the KTCT and the EIA, as well as prevent operational interference between the two areas¹, the Secretary for

¹ The Director of Marine will simultaneously proceed with the required legislative amendment to re-align the Eastern Quarantine Anchorage, designated under the Shipping and Port Control Regulations (Cap. 313A). The amendments would ensure that the two anchorages will continue to occupy the same location to facilitate the immigration and quarantine formalities of arriving vessels.

Security has made the Amendment Order to designate a new EIA with a minor re-alignment (see **Annex C**).

THE AMENDMENT ORDER

4. The Amendment Order amends Schedule 1 to the Immigration (Anchorage and Landing Places) Order (Cap. 115C) by re-configuring the coordinates of the existing EIA.

LEGISLATIVE TIMETABLE

5. The legislative timetable is as follows –

Publication in the Gazette	4 April 2014
Tabling at the Legislative Council	9 April 2014
Commencement of the Amendment Order	1 June 2014

IMPLICATIONS OF THE PROPOSAL

6. The Amendment Order is in conformity with the Basic Law, including the provisions concerning human rights. The Amendment Order does not affect the current binding effect of the Ordinance. It has no financial, civil service, productivity, economic, family, environment or sustainability implications.

PUBLICITY

7. As the amendment is technical in nature aiming at ensuring marine safety and facilitating the operation of KTCT and enforcement by the Immigration Department, no public consultation has been arranged. A spokesman will be made available to handle press enquiries.

ENQUIRIES

8. Enquiries on this brief may be addressed to Mr Billy Woo, Principal Assistant Secretary for Security, at 2810 2506.

**Security Bureau
Immigration Department
April 2014**

**Immigration (Anchorage and Landing Places)
(Amendment) Order 2014**

(Made by the Secretary for Security under section 60 of the Immigration Ordinance (Cap. 115))

1. Commencement

This Order comes into operation on 1 June 2014.

2. Immigration (Anchorage and Landing Places) Order amended

The Immigration (Anchorage and Landing Places) Order (Cap. 115 sub. leg. C) is amended as set out in section 3.

3. Schedule 1 amended

(1) Schedule 1—

Repeal item I

Substitute

“I. Eastern Immigration Anchorage The area of the waters of Hong Kong bounded by straight lines joining the following positions—

- (a) latitude 22°18.258' north,
longitude 114°12.147' east;
- (b) latitude 22°17.975' north,
longitude 114°12.147' east;
- (c) latitude 22°17.975' north,
longitude 114°12.434' east;
- (d) latitude 22°18.094' north,
longitude 114°12.564' east;

- (e) latitude 22°18.258' north,
longitude 114°12.573' east.

Note: In item I, a reference to the co-ordinates of a point is a reference to the co-ordinates of that point based on the World Geodetic System 1984 (WGS 84).”.

(2) Schedule 1, at the end of item II—

Add

“Note: In item II, a reference to the co-ordinates of a point is a reference to the co-ordinates of that point based on the World Geodetic System 1984 (WGS 84).”.

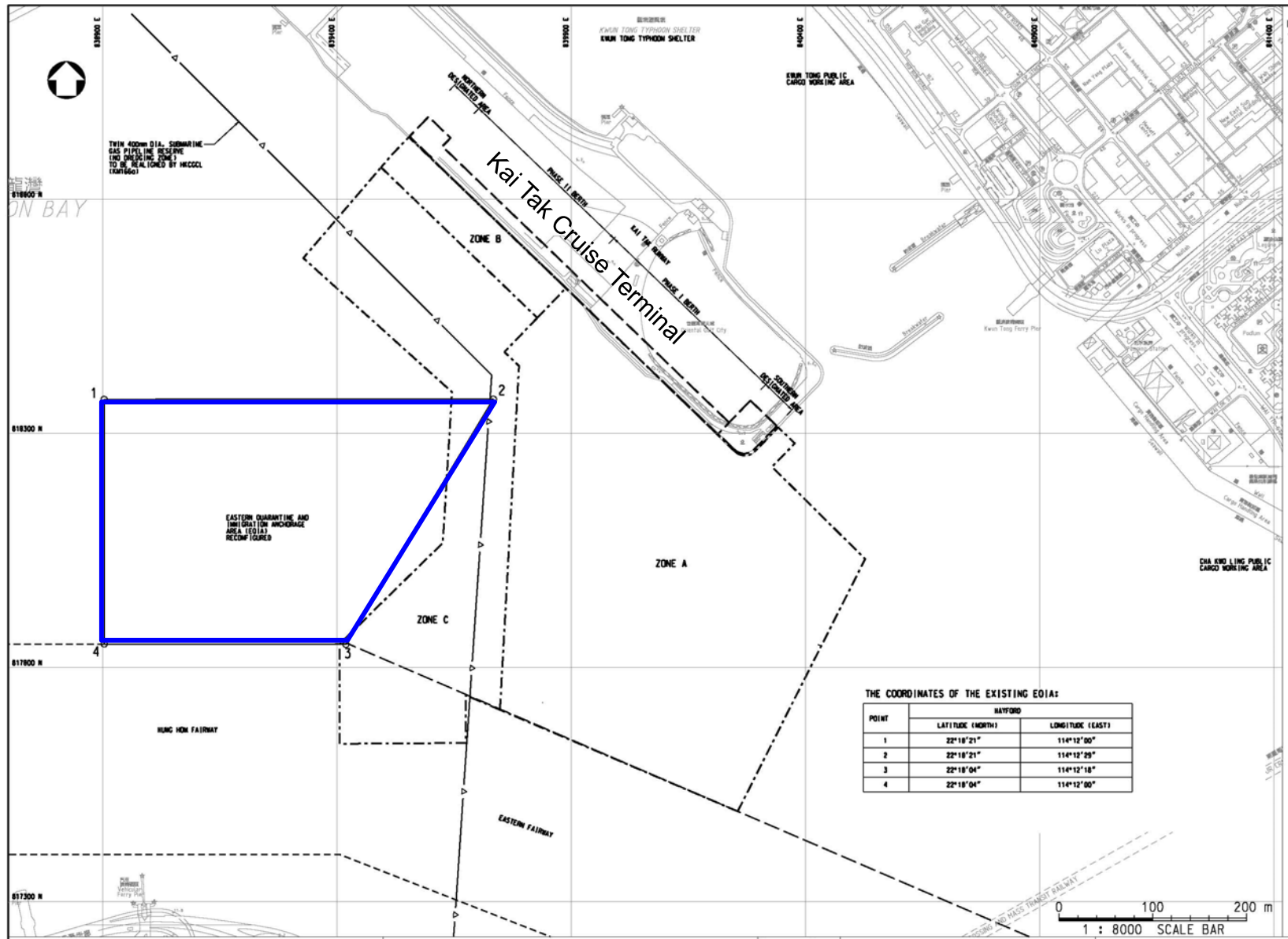
Secretary for Security

2014

Explanatory Note

This Order amends Schedule 1 to the Immigration (Anchorage and Landing Places) Order (Cap. 115 sub. leg. C) to make minor adjustment to the boundaries of the Eastern Immigration Anchorage, and to clarify the co-ordinate system used in that Schedule for the Western Immigration Anchorage.

The Existing Eastern Immigration Anchorage



The New Eastern Immigration Anchorage

Annex C

