

**THE ACCOUNTS OF THE
LOTTERIES FUND
2013 - 14**

Lotteries Fund

CONTENTS

	Page
Introduction	3
Report of the Director of Audit	4
Statement of Assets and Liabilities	6
Statement of Receipts and Payments	7
Notes to the Financial Statements	8
Schedule	
Statement of Approved Grants	11
Charts	
Analysis of Receipts by Value and by Percentage for the years ended 31 March 2010 to 2014	55
Mark Six Lottery - Allocation of Gross Proceeds for the years ended 31 March 2010 to 2014	56

This page is intentionally left blank.

Lotteries Fund

INTRODUCTION

Purpose

The Lotteries Fund was established to finance social welfare services by grants, loans and advances.

Legislation

2. The Fund was established by a Resolution of the Legislative Council on 30 June 1965. After the enactment of the Public Finance Ordinance (Cap. 2) on 1 April 1983, the Fund is deemed to have been established under section 29(3) of that Ordinance.

The Accounts

3. The Statement of Assets and Liabilities as at 31 March 2014 and the Statement of Receipts and Payments for the year ended 31 March 2014 were signed on 15 August 2014 and transmitted to the Director of Audit for auditing in accordance with section 7 of the Government Lotteries Ordinance (Cap. 334). These statements together with the Report of the Director of Audit are included in this Report.

4. Receipts for 2013-14 totalled HK\$11,757 million, including transfer from General Revenue (HK\$10,000 million), lottery proceeds (HK\$1,159 million), investment income (HK\$518 million), net proceeds from auctions of vehicle registration marks (HK\$77 million) and donations and refund of grants (HK\$3 million). Payments for 2013-14 amounted to HK\$812 million.

5. There was a surplus in the year of HK\$10,945 million which increased the total Fund balance to HK\$21,173 million.

6. The details of grants are shown in the Statement of Approved Grants.

Martin SIU

Director of Accounting Services
21 November 2014

Lotteries Fund

REPORT OF THE DIRECTOR OF AUDIT



Audit Commission

The Government of the Hong Kong Special Administrative Region

Independent Audit Report To the President of the Legislative Council

I certify that I have examined and audited the financial statements of the Lotteries Fund set out on pages 6 to 10, which comprise the statement of assets and liabilities as at 31 March 2014, and the statement of receipts and payments for the year then ended, and a summary of significant accounting policies and other explanatory information.

Director of Accounting Services' responsibility for the financial statements

Under section 7(1) of the Government Lotteries Ordinance (Cap. 334), the Director of Accounting Services is responsible for the preparation of the statement of the accounts which includes a receipts and payments account and a statement of assets and liabilities. In accordance with section 16(1) of the Public Finance Ordinance (Cap. 2), the Director of Accounting Services is also responsible for the management of accounting operations and procedures, and for ensuring that all regulations, directions or instructions made or given under the Public Finance Ordinance relating thereto and in respect of the safe custody of public moneys and its accounting are complied with.

Auditor's responsibility

My responsibility is to express an opinion on these financial statements based on my audit. I conducted my audit in accordance with section 7(1A) of the Government Lotteries Ordinance and the Audit Commission auditing standards. Those standards require that I comply with ethical requirements and plan and perform the audit to obtain reasonable assurance about whether the financial statements are free from material misstatement.

An audit involves performing procedures to obtain audit evidence about the amounts and disclosures in the financial statements. The procedures selected depend on the auditor's judgment, including the assessment of the risks of material misstatement of the financial statements, whether due to fraud or error. In making those risk assessments, the auditor considers internal control relevant to the entity's preparation of the financial statements in order to design audit procedures that are appropriate in the circumstances, but not for the purpose of expressing an opinion on the effectiveness of the entity's internal control. An audit also includes evaluating the appropriateness of accounting policies used by the Director of Accounting Services, as well as evaluating the overall presentation of the financial statements.

I believe that the audit evidence I have obtained is sufficient and appropriate to provide a basis for my audit opinion.

Lotteries Fund

Opinion

In my opinion, the financial statements of the Lotteries Fund for the year ended 31 March 2014 are prepared, in all material respects, in accordance with section 7(1) of the Government Lotteries Ordinance.

David Sun
Director of Audit

28 October 2014

Audit Commission
26th Floor
Immigration Tower
7 Gloucester Road
Wanchai, Hong Kong

Lotteries Fund

STATEMENT OF ASSETS AND LIABILITIES AS AT 31 MARCH 2014

	Note	2014 HK\$'000	2013 HK\$'000
Assets			
Investments with the Exchange Fund	3	21,230,854	10,288,096
Cash and bank balances		1	1
		21,230,855	10,288,097
Liabilities			
Deposits	4	(57,785)	(59,821)
		21,173,070	10,228,276
Representing:			
Fund Balance			
Balance at beginning of year		10,228,276	9,329,516
Surplus for the year		10,944,794	898,760
Balance at end of year	5	21,173,070	10,228,276

Notes 1 to 8 form part of these financial statements.

Martin SIU
Director of Accounting Services
15 August 2014



Lotteries Fund

STATEMENT OF RECEIPTS AND PAYMENTS FOR THE YEAR ENDED 31 MARCH 2014

	Note	2014 HK\$'000	2013 HK\$'000
Cash and bank balances at beginning of year		1	-
Receipts	6	11,756,858	1,779,776
Payments	7	(812,064)	(881,016)
Surplus for the year		10,944,794	898,760
Other cash movements	8	(10,944,794)	(898,759)
Cash and bank balances at end of year		1	1

Notes 1 to 8 form part of these financial statements.

Martin SIU
Director of Accounting Services
15 August 2014



Lotteries Fund

NOTES TO THE FINANCIAL STATEMENTS

1. Purpose and Legislation

The Lotteries Fund finances social welfare services by grants, loans and advances. It was established with effect from 30 June 1965 by a Resolution (hereinafter referred to as the Resolution) passed by the Legislative Council on the same date and subsequently deemed to have been established under section 29(3) of the Public Finance Ordinance (Cap. 2). The financial statements of the Fund are prepared in accordance with section 7 of the Government Lotteries Ordinance (Cap. 334).

2. Accounting Policy

The accounts of the Lotteries Fund are kept on a cash basis. Transactions are recorded when moneys are received or paid. The Statement of Assets and Liabilities of the Fund excludes fixed assets, loans, investments other than those made under paragraph 2 of the Resolution, and debtors and creditors other than those deposits referred to in the Note 4 below.

3. Investments with the Exchange Fund

(i) These are investments and deposits held under paragraph 2 of the Resolution:

	2014 HK\$'000	2013 HK\$'000
Investments (Note (ii) below)	21,230,754	10,287,996
Deposits	100	100
	<u>21,230,854</u>	<u>10,288,096</u>

(ii) The investments represent the cost of investments together with the investment income received in the year being reported. Effective from 1 April 2007, the investment income is calculated on the basis of the average annual investment return of the Exchange Fund's Investment Portfolio for the past six years or the average annual yield of three-year Exchange Fund Notes for the previous year subject to a minimum of zero percent, whichever is the higher. The investment income for the year ended 31 March 2014 was HK\$518 million (2013: HK\$530 million).

4. Deposits

These are moneys received from time to time from individuals or organisations for a variety of reasons and are in due course either repayable or transferable for credit to the Fund:

	2014 HK\$'000	2013 HK\$'000
Donations	56,304	56,304
Contract retention money	1,481	3,517
	<u>57,785</u>	<u>59,821</u>

5. Commitments

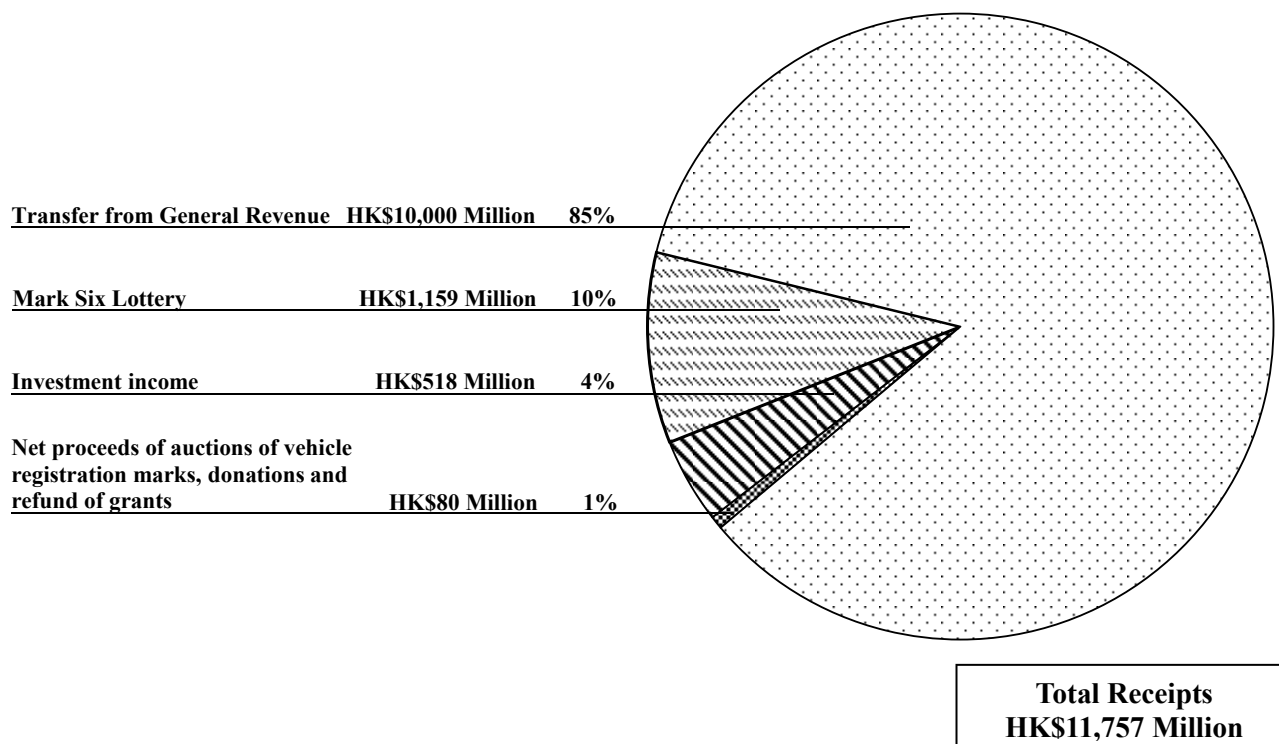
The approved grants that were unpaid as at 31 March 2014 amounted to HK\$3,994 million (2013: HK\$3,659 million).

Lotteries Fund

6. Receipts

	2014		2013
	Original Estimate HK\$'000	Actual HK\$'000	Actual HK\$'000
Mark Six Lottery	1,106,096	1,158,703	1,171,767
Investment income			
Investments with the Exchange Fund	500,000	518,396	529,994
Net proceeds of auctions of vehicle registration marks	48,578	76,817	76,551
Donations	10,105	2,866	1,464
Refund of grants	-	76	-
Transfer from General Revenue	-	10,000,000	-
	<u>1,664,779</u>	<u>11,756,858</u>	<u>1,779,776</u>

Analysis of Receipts for the year ended 31 March 2014



Lotteries Fund

7. Payments

	2014		2013
	Original Estimate HK\$'000	Actual HK\$'000	Actual HK\$'000
Grants	1,166,983	812,064	881,016
Additional commitments	122,015	-	-
	<u>1,288,998</u>	<u>812,064</u>	<u>881,016</u>

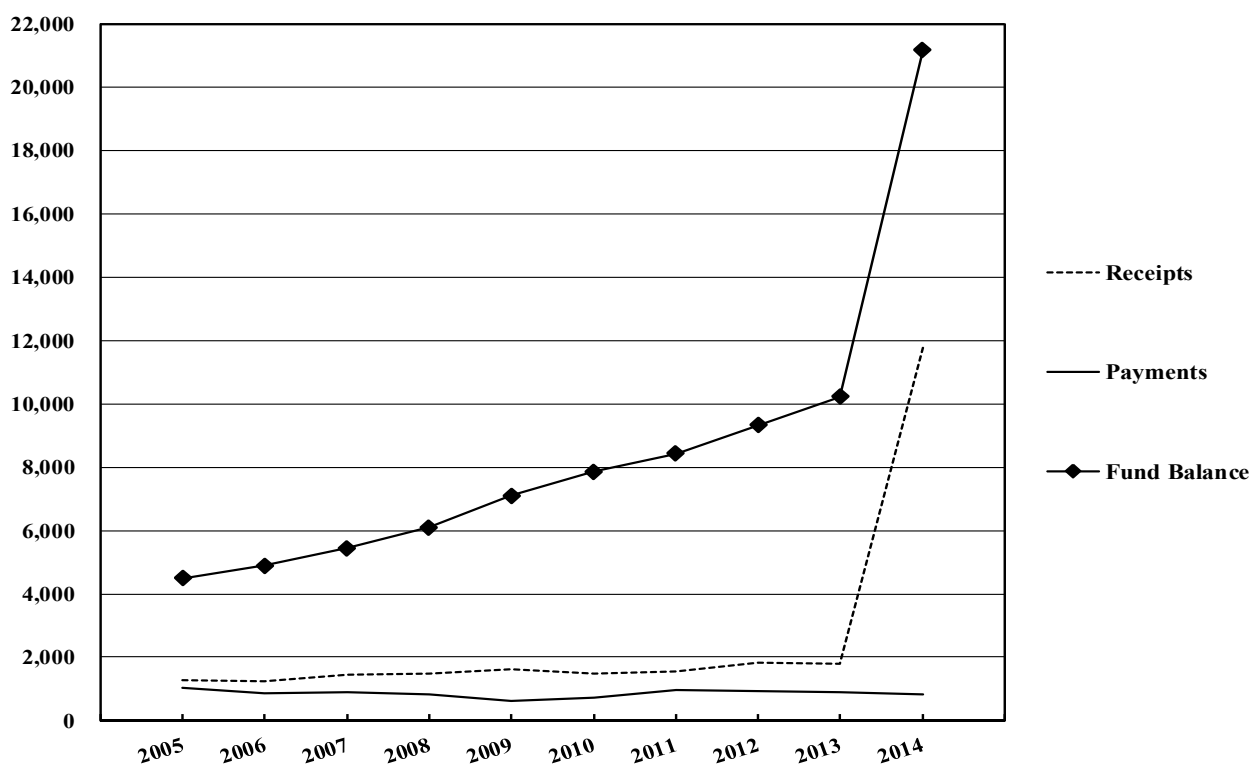
8. Other Cash Movements

These are cash movements arising from changes in other assets and liabilities:

	2014 HK\$'000	2013 HK\$'000
Increase in Assets		
Investments with the Exchange Fund	(10,942,758)	(899,866)
(Reduction)/Increase in Liabilities		
Deposits	(2,036)	1,107
	<u>(10,944,794)</u>	<u>(898,759)</u>

Receipts, Payments and Fund Balance for the years ended 31 March 2005 to 2014

HK\$Million



Lotteries Fund

STATEMENT OF APPROVED GRANTS

Descriptions	Approved Grants	2013-14 Payments			Accumulated Payments to 31.3.2014	Unspent Balances (N=Not required)
	HK\$	Original Estimate HK\$	Amended Estimate HK\$	Actual HK\$	HK\$	HK\$
1. Aberdeen Kai Fong Welfare Association Social Service Centre		3,568,000	3,568,000			
(1) Renovating, furnishing and equipping Southern District Elderly Community Centre at 3 Shum Wan Road, Aberdeen	760,600			24,632	739,482	21,118
(2) Renovating Community Centre Building in Aberdeen	3,756,000			599,004	629,004	3,126,996
(3) Replacing a vehicle for Wah Kwai Day Care Centre for the Elderly	811,000			—	—	811,000
	5,327,600	3,568,000	3,568,000	623,636	1,368,486	3,959,114
2. Against Child Abuse Limited						
Fitting out for setting up a Child Protection Service Centre in North Point	1,478,000	295,000	1,405,000	1,245,977	1,245,977	232,023
3. Agency for Volunteer Service						
Fitting out, furnishing and equipping for reprovisioning Volunteer Training and Development Centre to Kwai Chung	3,066,000	—	756,000	631,094	2,892,156	173,844
4. Alice Ho Miu Ling Nethersole Charity Foundation						
Renovating the Alice Ho Miu Ling Nethersole Nursing Home in Kowloon Bay	2,207,000	772,000	772,000	—	—	2,207,000
5. Architectural Services Department		56,500,000	47,173,000			
(1) Constructing and fitting out a social centre for the elderly in the Kowloon Canton Railway Corporation site at Mong Kok Station	1,458,000			—	—	1,458,000
(2) Fitting out the Kowloon Union Church Wai Ji Training Centre Sheltered Workshop in Yuen Long	5,359,000			—	3,368,694	1,990,306
(3) Fitting out the Kowloon Union Church Wai Ji Training Centre Long Ping Supported Hostel I	3,172,000			—	2,558,979	613,021
(4) Constructing and fitting out a social centre for the elderly in the private development project in Area 19, Fanling	1,457,000			—	1,388,000	69,000
(5) Constructing and fitting out a day nursery in the private development project at Area 19, Fanling	3,306,000			—	3,149,000	157,000
(6) Fitting out the Society of Homes for the Handicapped Hostel for the Moderately Mentally Handicapped at Cheung Hong Estate	5,400,000			—	4,549,266	850,734
(7) Fitting out a hostel for the severely mentally handicapped at Lok Fu Estate for the Mental Health Association of Hong Kong	8,892,000			—	4,168,342	4,723,658
(8) Fitting out Neighbourhood Advice-Action Council one home help centre at Long Ping Estate	2,128,000			—	1,781,654	346,346
(9) Fitting out Hong Kong Christian Service Special Child Care Centre at Wing A, Ground Floor, Cheung Chi House, Cheung Wah Estate, New Territories	6,171,000			—	3,118,755	3,052,245
(10) Fitting out the Hong Kong Children and Youth Service three small group homes at Chung On Estate, Ma On Shan	3,433,000			—	1,410,995	2,022,005

Lotteries Fund

STATEMENT OF APPROVED GRANTS—continued

Descriptions	Approved Grants	2013–14 Payments			Accumulated Payments to 31.3.2014	Unspent Balances (N=Not required)
	HK\$	Original Estimate HK\$	Amended Estimate HK\$	Actual HK\$	HK\$	HK\$
(11) Carrying out construction and fitting out works for a Social Centre for the Elderly in the Private Sector Participation Scheme at King Tung Street, Wong Tai Sin	6,895,000			—	3,978,821	2,916,179
(12) Fitting out the Spastics Association of Hong Kong Hostel and Day Activity Centre for severely mentally handicapped at Block 7, Fu Tung Estate	20,995,900			—	11,414,066	9,581,834 N
(13) Fitting out a day care centre and a hostel for severely mentally handicapped at Hing Wah Estate Redevelopment Phase I	17,492,800			—	10,733,103	6,759,697
(14) Fitting out the expanded premises of the Caritas - Hong Kong Lok Hing Special Child Care Centre at Tai Hing Estate	6,032,000			—	4,082,895	1,949,105
(15) Constructing and fitting out a hostel for moderately mentally handicapped at the Tsuen Wan Town Centre Redevelopment Project	15,062,000			—	8,698,000	6,364,000
(16) Constructing and fitting out a multi-service centre for the elderly at the Tsuen Wan Town Centre Redevelopment Project	13,589,000			—	8,444,000	5,145,000
(17) Constructing a care and attention home for the elderly in the private development at Hong Kong and Yau-matei Ferry Company Limited at Tai Kok Tsui	23,121,000			—	10,927,800	12,193,200
(18) Fitting out the supported hostel for mentally handicapped at Shun Tin Estate	4,083,200			—	2,382,860	1,700,340
(19) Construction cost of a residential care home for the elderly at KIL 11146 Hoi Fai Road, West Kowloon Reclamation	41,858,000			—	—	41,858,000
(20) Constructing and fitting out the purpose-built rehabilitation complex at ex-staff quarters site of Castle Peak Hospital	334,168,000			(6,028,248)	265,782,291	68,385,709
(21) Constructing a residential care home for the elderly at the junction of Hoi Wang Road and Hoi Ting Road, West Kowloon Reclamation	44,150,000			—	17,369,100	26,780,900
(22) Fitting out a family crisis support centre at Kwun Tong Road	16,700,000			—	13,414,462	3,285,538 N
(23) Refurbishing 15 ex-staff/ex-doctors quarter blocks of Castle Peak Hospital at Tuen Mun	30,830,000			—	28,293,823	2,536,177
(24) Fitting out the former Chuk Yuen Children's Reception Centre premises to re-provision 4 services units of Social Welfare Department	12,890,000			—	10,311,383	2,578,617 N
(25) Constructing an integrated children and youth services centre in a government public works project at Tseng Choi Street, Tuen Mun Area 10	28,000,000			240,000	25,240,000	2,760,000 N
(26) Constructing a residential care home for the elderly cum a day care unit at Cherry Street, Tai Kok Tsui under the Urban Renewal Authority Development Scheme	14,829,000			1,348,100	13,481,000	1,348,000
(27) Constructing a residential care home for the elderly cum a day care unit at the site between the First Street and Second Street, Sai Ying Pun under the Urban Renewal Authority Development Scheme	16,822,000			1,529,200	15,182,000	1,640,000
(28) Constructing a residential care home for the elderly cum a day care unit at site TW7, West Rail Tsuen Wan West Station under the Kowloon-Canton Railway Corporation Development Scheme	21,758,000			—	—	21,758,000
(29) Carrying out building repair and works in external areas of multi-purpose crisis intervention and support centre	5,555,000			—	5,401,934	153,066 N
(30) Construction cost of a residential care home for the elderly at Po On Road/Wai Wai Road, Sham Shui Po	18,283,000			—	—	18,283,000
(31) Construction cost of an integrated children and youth services centre in a proposed government complex at Mei Foo	25,800,000			14,839,000	24,839,000	961,000
(32) Designing and constructing an integrated community mental health support services centre and a long stay care home in Tin Shui Wai Area 109	156,800,000			3,820,537	130,151,537	26,648,463

Lotteries Fund

STATEMENT OF APPROVED GRANTS—continued

Descriptions	Approved Grants	2013–14 Payments			Accumulated Payments to 31.3.2014	Unspent Balances (N=Not required)
	HK\$	Original Estimate HK\$	Amended Estimate HK\$	Actual HK\$	HK\$	HK\$
(33) Constructing a residential care home for the elderly cum community support service centre at Lee Tung Street and McGregor Street, Wanchai under Urban Renewal Authority Development Scheme	36,630,000			—	—	36,630,000
(34) Constructing a district elderly community centre cum integrated home care services team and an integrated family service centre in a government complex in Fanling Area 44	76,900,000			—	—	76,900,000
(35) Construction costs of a 100-place residential care home for the elderly cum a 20-place day care unit, a neighbourhood elderly centre and an integrated children and youth services centre in Tai Wai Depot Site of the Ma On Shan Railway under the Kowloon Canton Railway Corporation Development Scheme	35,702,000			—	30,831,300	4,870,700
	1,065,721,900	56,500,000	47,173,000	15,748,589	666,453,060	399,268,840
6. Asia Women's League Limited		—	—			
(1) Constructing, furnishing and equipping a care and attention home cum social centre for the elderly in Kowloon Tong	30,882,200			—	28,380,753	2,501,447
(2) Upgrading the provision of hospital beds in Chan Kwun Tung Care and Attention Home for the Elderly	624,000			—	—	624,000
(3) Upgrading the provision of hospital beds in Ho Leung Kit Ting Care and Attention Home for the Elderly	520,000			—	—	520,000
	32,026,200	—	—	—	28,380,753	3,645,447
7. Association Concerning Sexual Violence Against Women		308,000	308,000			
(1) Fitting out for reprovisioning the RainLily Crisis Centre	976,800			—	737,899	238,901
(2) Fitting out for reprovisioning the RainLily Crisis Centre	1,368,000			—	—	1,368,000
	2,344,800	308,000	308,000	—	737,899	1,606,901
8. Baptist Oi Kwan Social Service		1,068,000	1,068,000			
(1) Renovating the Tsing Yi Neighbourhood Elderly Centre	1,155,000			—	667,359	487,641 <i>N</i>
(2) Renovating the Headquarters Building	1,793,200			—	1,242,207	550,993
(3) Renovating the Yan Kwan Halfway House	3,125,900			438,007	2,178,743	947,157
(4) Renovating the Tai Po Baptist Church Au Cheung Sau Fong Neighbourhood Elderly Centre	1,183,700			—	923,884	259,816
(5) Renovating the Baptist Oi Kwan Social Service Resources and Service Centre for the Relatives of Ex-Mentally Ill People at Choi Fai Estate	981,200			—	—	981,200
(6) Fitting out the additional premises of Tai Po Baptist Church Au Cheung Sau Fong Neighbourhood Elderly Centre in Tai Po	1,930,000			—	—	1,930,000
(7) Fitting out an Integrated Community Centre for Mental Wellness in Kwai Tsing	4,042,000			—	—	4,042,000
	14,211,000	1,068,000	1,068,000	438,007	5,012,193	9,198,807
9. Barnabas Charitable Service Association Limited						
Renovating, furnishing and equipping Ma On Shan Halfway House	6,385,000	—	—	—	—	6,385,000
10. Boys' and Girls' Clubs Association of Hong Kong		4,179,000	9,334,000			
(1) Fitting out the sub-base of Jockey Club Fanling Children and Youth Integrated Services Centre	1,453,000			—	1,176,699	276,301
(2) Implementing a Cyber Youth Outreaching Project on a three-year pilot basis	5,200,000			1,578,320	4,718,850	481,150
(3) Furnishing and equipping for reprovisioning Jockey Club Tai Wai Children and Youth Integrated Services Centre in Sha Tin	516,000			—	—	516,000

Lotteries Fund

STATEMENT OF APPROVED GRANTS—continued

Descriptions	Approved Grants	2013–14 Payments			Accumulated Payments to 31.3.2014	Unspent Balances (N=Not required)
	HK\$	Original Estimate HK\$	Amended Estimate HK\$	Actual HK\$	HK\$	HK\$
(4) Fitting out for reprovisioning Jockey Club Tai Wai Children and Youth Integrated Services Centre in Sha Tin	8,303,000			7,084,873	7,084,873	1,218,127
	15,472,000	4,179,000	9,334,000	8,663,193	12,980,422	2,491,578
11. Caritas-Hong Kong		9,915,000	14,206,000			
(1) Renovating the Fung Wong Fung Ting Home for the Elderly	3,200,800			—	3,031,821	168,979
(2) Fitting out the Caritas Integrated Family Service Centre - Tsuen Wan (East) at Shek Wai Kok Estate, Tsuen Wan	3,211,300			—	3,211,230	70 N
(3) Fitting out the Caritas Dr. and Mrs. Olinto de Sousa Integrated Family Service Centre at Herring Gull House, Sha Kok Estate, Shatin	661,800			—	619,770	42,030
(4) Fitting out the Caritas Integrated Family Service Centre in Fanling	2,981,700			60,943	2,361,766	619,934
(5) Fitting out the Caritas Integrated Family Service Centre in Tuen Mun	3,443,300			249,420	3,443,220	80 N
(6) Carrying out conversion works for the Caritas Integrated Family Service Centre in Tung Tau Estate	1,613,000			—	1,320,690	292,310
(7) Fitting out an additional premises of a district elderly community centre in Tin Shui Wai, Yuen Long	1,990,300			231,174	1,990,230	70 N
(8) Fitting out an integrated family service centre at Aldrich Bay Road, Shau Kei Wan	3,968,300			336,364	3,688,082	280,218
(9) Fitting out the Caritas Integrated Family Service Centre - Aberdeen (Tin Wan / Pok Fu Lam) (3/F)	1,423,400			—	1,143,702	279,698
(10) Fitting out the Caritas Integrated Family Service Centre - Aberdeen (Tin Wan / Pok Fu Lam) (5/F)	940,200			—	881,058	59,142
(11) Furnishing and equipping the Caritas Integrated Family Service Centre - Aberdeen (Tin Wan / Pok Fu Lam)	483,800			74,284	483,726	74
(12) Fitting out for reprovisioning Caritas Elderly Centre to Choi Ying Estate, Kwun Tong	2,710,700			—	2,469,588	241,112
(13) Fitting out the Caritas HUGS Centre at Tai Hing Estate, Tuen Mun	2,271,100			241,935	2,271,060	40 N
(14) Renovating the Caritas Elderly Centre - Central District in Central	907,000			16,493	720,111	186,889
(15) Fitting out the sub-base of Caritas Day Care Centre for the Elderly in West Kowloon	708,200			—	606,100	102,100
(16) Furnishing and equipping Caritas Day Care Centre for the Elderly in West Kowloon	780,100			37,588	779,738	362
(17) Carrying out conversion works for the existing premises of Caritas Day Care Centre for the Elderly in West Kowloon	424,100			—	402,527	21,573
(18) Fitting out the new premises of Caritas Integrated Home Care Services in Sham Shui Po	903,600			—	773,300	130,300
(19) Fitting out a new district support centre for persons with disabilities at Cheung On Estate, Tsing Yi	3,260,100			—	3,019,706	240,394
(20) Implementing a Cyber Youth Outreaching Project on a three-year pilot basis	5,200,000			1,669,000	4,643,900	556,100
(21) Undertaking fire safety/building safety rectification measures for Caritas Lai Hong Home	1,474,000			8,800	8,800	1,465,200
(22) Replacing the existing 12-seater private light bus with a new 14-seater liquefied petroleum gas private light bus for Caritas Day Care Centre for the Elderly in West Kowloon	775,000			774,535	774,535	465 N
(23) Replacing the existing 16-seater private light bus with a new 16-seater liquefied petroleum gas private light bus for Caritas Lok Ngai Day Activity Centre	515,000			514,328	514,328	672 N
(24) Replacing the existing 13-seater private light bus with a new 13-seater liquefied petroleum gas private light bus for Caritas Lok Yin Day Activity Centre	782,000			781,905	781,905	95 N

Lotteries Fund

STATEMENT OF APPROVED GRANTS—continued

Descriptions	Approved Grants HK\$	2013–14 Payments			Accumulated Payments to 31.3.2014	Unspent Balances (N=Not required)
		Original Estimate HK\$	Amended Estimate HK\$	Actual HK\$	HK\$	HK\$
(25) Fitting out for setting up Caritas Personal Growth Centre for Men in Wong Tai Sin	1,185,000			1,004,666	1,004,666	180,334
(26) Furnishing and equipping for Caritas Evergreen Home in Sai Ying Pun	1,757,000			357,417	1,177,769	579,231
(27) Fitting out for reprovisioning Caritas Integrated Family Service Centre - Tung Tau (Wong Tai Sin South West)	7,082,000			5,734,991	5,734,991	1,347,009
(28) Additional fitting out works for the reprovisioning of Caritas Sha Tin Elderly Centre in Sha Tin	574,000			—	—	574,000
(29) Replacing the existing 12-seater private light bus with a new 27-seater private bus for Caritas Resurrection School	645,000			—	—	645,000
(30) Replacing a vehicle for Caritas Jockey Club Lok Yan School	812,000			—	—	812,000
(31) Upgrading the provision of hospital beds in Caritas Lai Kok Home	403,000			—	—	403,000
(32) Upgrading the provision of hospital beds in Caritas Li Ka Shing Care and Attention Home	520,000			173,200	173,200	346,800
(33) Replacing a vehicle for Caritas Evergreen Home	781,000			—	—	781,000
(34) Furnishing and equipping for upgrading the provision of hospital beds for Caritas Fu Tung Home	507,000			—	—	507,000
(35) Furnishing and equipping for upgrading the provision of hospital beds for Caritas Fung Wong Fung Ting Home	455,000			—	—	455,000
(36) Furnishing and equipping for upgrading the provision of hospital beds for Caritas Harold H.W. Lee Care and Attention Home	845,000			—	—	845,000
(37) Furnishing and equipping for upgrading the provision of hospital beds for Caritas Li Ka Shing Care and Attention Home	845,000			—	—	845,000
(38) Renovating Caritas Lok Heep Club - Hong Kong Centre in Wan Chai	1,734,000			—	—	1,734,000
	62,773,800	9,915,000	14,206,000	12,267,043	48,031,519	14,742,281
12. Charmind Limited		—	1,675,000			
(1) Fitting out a residential care home for the elderly cum day care unit at Shek Yam Estate, Kwai Chung	18,388,300			1,624,255	18,343,549	44,751
(2) Furnishing and equipping a residential care home for the elderly cum day care unit at Shek Yam Estate, Kwai Chung	2,205,400			—	2,155,400	50,000
	20,593,700	—	1,675,000	1,624,255	20,498,949	94,751
13. Chi Lin Nunnery		—	—			
(1) Upgrading the provision of hospital beds in Chi Lin Care and Attention Home	1,300,000			—	—	1,300,000
(2) Replacing the existing 12-seater and 14-seater diesel private light buses with two new 14-seater diesel private light buses for Chi Lin Day Care Centre for the Elderly	1,657,000			—	—	1,657,000
(3) Replacing the existing 14-seater diesel private light buses with a new 14-seater diesel private light buses for Chi Lin Care and Attention Home	829,000			—	—	829,000
	3,786,000	—	—	—	—	3,786,000
14. Chief Secretary for Administration's Office						
Meeting the initial expenses of Phase 1 of the Social Innovation and Entrepreneurship Development Fund	40,000,000	—	25,000,000	—	—	40,000,000
15. Chinese Rhenish Church Hong Kong Synod		3,271,000	7,887,000			
(1) Renovating, furnishing and equipping Sze Tian Rhenish Home for the Elderly in Kwai Chung	7,157,400			199,916	5,547,219	1,610,181
(2) Renovating, furnishing and equipping Wong Siu Ching Rhenish Home for the Elderly in Sha Tin	10,729,000			7,182,310	8,713,022	2,015,978

Lotteries Fund

STATEMENT OF APPROVED GRANTS—continued

Descriptions	Approved Grants HK\$	2013–14 Payments			Accumulated Payments to 31.3.2014 HK\$	Unspent Balances (N=Not required) HK\$
		Original Estimate HK\$	Amended Estimate HK\$	Actual HK\$		
(3) Upgrading the provision of hospital beds in Kwai Shing East Rhenish Care and Attention Home	923,000			—	—	923,000
(4) Upgrading the provision of hospital beds in Wong Siu Ching Rhenish Home for the Elderly	624,000			—	—	624,000
(5) Replacing a vehicle for Kwai Shing East Rhenish Care and Attention Home	865,000			—	—	865,000
	20,298,400	3,271,000	7,887,000	7,382,226	14,260,241	6,038,159
16. Chinese Young Men's Christian Association of Hong Kong		6,406,000	10,292,000			
(1) Fitting out a new integrated children and youth services centre in Tin Shui Wai	5,348,000			—	4,710,100	637,900
(2) Fitting out the additional premises of Chai Wan Neighbourhood Elderly Centre in Chai Wan	1,417,000			30,000	1,310,362	106,638
(3) Renovating Home of Love Sheltered Workshop in Sheung Wan	2,480,000			—	—	2,480,000
(4) Renovating Y's Men's Centre for the Deaf in Sau Mau Ping	2,356,000			—	—	2,356,000
(5) Renovating Home of Love - Wah Fu Hostel in Aberdeen	2,626,000			—	—	2,626,000
(6) Furnishing and equipping for reprovisioning Shek Kip Mei Centre to Shek Kip Mei	617,000			—	—	617,000
(7) Fitting out for reprovisioning Shek Kip Mei Centre to Shek Kip Mei	6,826,000			6,276,622	6,276,622	549,378
(8) Renovating Home of Love Hostel in Sheung Wan	6,136,000			—	—	6,136,000
	27,806,000	6,406,000	10,292,000	6,306,622	12,297,084	15,508,916
17. Ching Chung Taoist Association of Hong Kong Limited		—	666,000			
(1) Carrying out drainage works for the Ching Chung Care and Attention Home for the Aged in Yuen Long	2,061,300			620,166	1,599,060	462,240
(2) Upgrading the provision of hospital beds in Ching Chung Care and Attention Home for the Aged	519,000			—	380,000	139,000
(3) Furnishing and equipping for upgrading the provision of Hospital Beds for Ching Chung Care and Attention Home for the Aged	520,000			—	—	520,000
	3,100,300	—	666,000	620,166	1,979,060	1,121,240
18. Christian Action						
Enhanced New Dawn Project from October 2007 to March 2010 in Sha Tin/Tai Po and North	1,845,000	—	—	(449,051)	1,056,949	788,051 N
19. Christian & Missionary Alliance Church Union Hong Kong Limited						
Fitting out Lam Tin Neighbourhood Elderly Centre in Yau Tong	2,661,800	—	—	—	2,529,652	132,148 N
20. Christian Family Service Centre		22,825,000	34,467,000			
(1) Renovating, furnishing and equipping for in-situ expansion of the Serene Court, a refuge centre for women	3,944,900			35,449	3,092,959	851,941
(2) Installing air-conditioning for Yam Pak Charitable Foundation King Lam Home for the Elderly in Tseung Kwan O	454,200			53,343	441,228	12,972 N
(3) Renovating Wong Tai Sin Integrated Home Care Services Team at Tung Tau Estate, Kowloon	1,117,300			88,330	1,055,318	61,982 N
(4) Fitting out a day care centre for the elderly at Tsui Lam Estate, Tseung Kwan O	3,626,400			—	3,406,392	220,008
(5) Meeting the operating cost to implement a 3-year pilot scheme on home care services for persons with severe disabilities in Kwun Tong	78,553,000			21,405,843	62,728,111	15,824,889
(6) Fitting out the office under the pilot scheme on home care services for persons with severe disabilities in Kwun Tong	1,649,000			387,366	1,532,732	116,268

Lotteries Fund

STATEMENT OF APPROVED GRANTS—continued

Descriptions	Approved Grants HK\$	2013–14 Payments			Accumulated Payments to 31.3.2014 HK\$	Unspent Balances (N=Not required) HK\$
		Original Estimate HK\$	Amended Estimate HK\$	Actual HK\$		
(7) Renovating, furnishing and equipping Tak Tin Kindergarten in Lam Tin	2,209,000			979,566	1,849,851	359,149
(8) Renovating, furnishing and equipping Cheerland Kindergarten in Kwun Tong	2,270,000			829,346	1,515,670	754,330
(9) Renovating, furnishing and equipping Yang Chen House in Tseung Kwan O	16,652,000			1,138,401	1,161,401	15,490,599
(10) Upgrading the provision of hospital beds in Yam Pak Charitable Foundation King Lam Home for the Elderly	726,000			—	641,088	84,912 N
(11) Upgrading the provision of hospital beds in Yang Chen House	609,000			299,544	502,806	106,194 N
(12) Purchasing a 16-seater liquefied petroleum gas private light bus and essential equipment for Enhanced Home and Community Care Services Teams in Wong Tai Sin and Kwun Tong Cluster	2,295,000			—	2,291,181	3,819 N
(13) Renovating headquarters building in Kwun Tong	692,000			—	—	692,000
(14) Renovating Shing Mong Supported Hostel in Tseung Kwan O	2,616,000			—	23,562	2,592,438
(15) Renovating Shing Shun Small Group Home in Tseung Kwan O	1,600,000			—	14,411	1,585,589
(16) Renovating On Yee Hostel and On Yue Hostel in Chai Wan	3,130,000			—	28,193	3,101,807
(17) Replacing vehicles for Kwun Tong Integrated Home Care Services Team	2,248,000			2,119,515	2,119,515	128,485 N
	124,391,800	22,825,000	34,467,000	27,336,703	82,404,418	41,987,382
21. Chuk Lam Ming Tong Limited		1,413,000	1,413,000			
(1) Upgrading the provision of hospital beds in Chuk Lam Ming Tong Care and Attention Home for the Aged	1,413,000			—	—	1,413,000
(2) Replacing the existing vehicle for Chuk Lam Ming Tong Care and Attention Home for the Aged	813,000			—	—	813,000
(3) Furnishing and equipping for upgrading the provision of Hospital Beds for Chuk Lam Ming Tong Care & Attention Home for the Aged	676,000			—	—	676,000
	2,902,000	1,413,000	1,413,000	—	—	2,902,000
22. Chung Shak Hei (Cheung Chau) Home for the Aged Limited						
Renovating Chung Shak Hei (Cheung Chau) Home for the Aged	1,481,000	—	—	—	—	1,481,000
23. Chung Sing Benevolent Society						
Upgrading the provision of hospital beds in Lau Mui Hin Home for the Elderly	726,000	—	616,000	616,000	616,000	110,000 N
24. Direction Association for the Handicapped						
Replacing the existing 9-seater private light bus with a new 12-seater private light bus for Head Office cum Activity Centre	697,000	—	697,000	697,000	697,000	—
25. Director of Social Welfare Incorporated						
Community Investment and Inclusion Fund	200,000,000	7,593,000	13,501,005	13,501,005	200,000,000	—
26. ELCHK, Social Service Head Office		2,510,000	5,775,293			
(1) Purchasing the upgraded furniture and equipment items for residential care home for the elderly and day care centre for the elderly	457,000			129,475	456,974	26
(2) Renovating, furnishing and equipping Ling Kung Nursery School in Tsing Yi	1,353,000			4,481	1,094,846	258,154
(3) Fitting out the additional premises of Ma On Shan District Elderly Community Centre cum Day Care Unit in Sha Tin	3,419,000			1,757,238	3,026,000	393,000

Lotteries Fund

STATEMENT OF APPROVED GRANTS—continued

Descriptions	Approved Grants	2013–14 Payments			Accumulated Payments to 31.3.2014	Unspent Balances (N=Not required)
	HK\$	Original Estimate HK\$	Amended Estimate HK\$	Actual HK\$	HK\$	HK\$
(4) Furnishing and equipping the additional premises of Ma On Shan District Elderly Community Centre cum Day Care Unit in Sha Tin	1,125,000			779,293	877,183	247,817
(5) Upgrading the provision of hospital beds in Shan King Care and Attention Home for the Elderly	519,000			—	476,000	43,000 N
(6) Fitting out Enlighten Centre in Tin Shui Wai	2,162,000			1,774,010	1,896,671	265,329
(7) Furnishing and equipping Enlighten Centre in Tin Shui Wai	437,000			435,568	435,568	1,432
(8) Upgrading the provision of hospital beds in Shan King Care and Attention Home for the Elderly	715,000			—	—	715,000
(9) Replacement works of air-conditioning for ELCHK Amazing Grace Nursery School in Sai Ying Pun	475,000			—	—	475,000
(10) Furnishing and equipping for upgrading the provision of hospital beds for Shan King Care and Attention Home for the Elderly	819,000			—	—	819,000
	11,481,000	2,510,000	5,775,293	4,880,065	8,263,242	3,217,758
27. E.T. Investment Limited						
Fitting out a residential care home for the elderly at Tsz Lok Estate, Tsz Wan Shan	25,053,700	1,000,000	1,000,000	—	21,630,958	3,422,742
28. Fu Hong Society						
		6,151,000	10,519,000			
(1) Renovating the Father Tapella Home in Tsuen Wan	1,709,100			102,483	1,671,028	38,072 N
(2) Renovating the Yau Chong Home in Tuen Mun	2,007,800			—	1,492,280	515,520
(3) Renovating Fu Hong Society Tin Yiu Home in Tin Shui Wai	5,238,000			—	4,559,901	678,099
(4) Renovating Shun Lee Adult Training Centre in Kwun Tong	1,309,700			107,680	1,196,528	113,172 N
(5) Renovating Fu Hong Society Rehabilitation Centre at Yue Kwong Road, Aberdeen	12,672,900			6,362,120	6,399,670	6,273,230
(6) Undertaking fire safety/building safety rectification measures to meet the licensing requirements under the future legislation relating to residential care homes for persons with disabilities for Lok Wah Adult Training Centre	433,000			—	385,829	47,171 N
(7) Undertaking fire safety/building safety rectification measures for Leung King Adult Training Centre	492,000			—	424,610	67,390
(8) Fitting out for setting up an Integrated Community Centre for Mental Wellness in Wah Fu	2,149,000			110,162	2,027,262	121,738
(9) Renovating Chak On Adult Training Centre in Sham Shui Po	3,224,000			—	55,400	3,168,600
(10) Undertaking fire safety/building safety rectification measures to meet the statutory requirements under the Residential Care Homes (Persons with Disabilities) Ordinance for Concordia Casa Famiglia	408,000			—	—	408,000
(11) Undertaking fire safety/building safety rectification measures to meet the statutory requirements under the Residential Care Homes (Persons with Disabilities) Ordinance for Wo Che Adult Training Centre	420,000			—	—	420,000
	30,063,500	6,151,000	10,519,000	6,682,445	18,212,508	11,850,992
29. Fung Kai Public School						
Furnishing and equipping for upgrading the provision of hospital beds for Fung Kai Care and Attention Home for the Elderly - Home Section	416,000	—	—	—	—	416,000
30. Glorious Praise Fellowship (Hong Kong) Limited						
Meeting the cost of rectification and improvement works, and furnishing and equipping a drug dependent persons treatment and rehabilitation centre in Siu Lam	5,851,400	2,779,000	2,779,000	—	176,400	5,675,000

Lotteries Fund

STATEMENT OF APPROVED GRANTS—continued

Descriptions	Approved Grants HK\$	2013–14 Payments			Accumulated Payments to 31.3.2014 HK\$	Unspent Balances (N=Not required) HK\$
		Original Estimate HK\$	Amended Estimate HK\$	Actual HK\$		
31. Harmony House Limited						
Carrying out reinstatement works for the Shelter (Refuge for the Women) in Sha Tin	1,607,000	—	—	—	1,282,865	324,135
32. Haven of Hope Christian Service		6,390,000	11,265,000			
(1) Renovating the Haven of Hope Integrated Vocational Rehabilitation Services Centre in Choi Hung	6,571,500			4,725,457	5,708,893	862,607
(2) Fitting out a new district support centre for persons with disabilities in Tseung Kwan O	3,626,400			—	3,153,370	473,030
(3) Meeting the operating cost to implement a 3-year pilot scheme on home care services for frail elders in Kwun Tong	23,760,000			5,900,000	18,150,000	5,610,000
(4) Purchasing a 16-seater liquefied petroleum gas private light bus and essential equipment for Enhanced Home and Community Care Services Teams in Sai Kung and Wong Tai Sin/Sai Kung Cluster	1,404,000			581,987	1,346,758	57,242 N
(5) Undertaking fire safety/building safety rectification measures to meet the statutory requirements under the Residential Care Homes (Persons with Disabilities) Ordinance for Hang Hau Care and Attention Home for Severely Disabled	548,000			—	—	548,000
(6) Upgrading the provision of hospital beds in Haven of Hope Nursing Home	2,600,000			—	—	2,600,000
(7) Renovating Sheung Tak Centre in Tseung Kwan O	2,664,000			—	—	2,664,000
(8) Carrying out the air-conditioning works for Haven of Hope Nursing Home in Tseung Kwan O	1,890,000			—	—	1,890,000
	43,063,900	6,390,000	11,265,000	11,207,444	28,359,021	14,704,879
33. Heep Hong Society		1,365,000	5,537,000			
(1) Meeting the fitting out costs arising from the reprovisioning of Portland Street Early Education and Training Centre, Tai Hang Tung Parents Resource Centre and Healthy Kids Centre to Mong Kok West Area 20 Phase 4	6,070,900			—	5,559,740	511,160
(2) Fitting out the additional premises of Cheung Ching Early Education and Training Centre, Tsing Yi	665,500			—	613,947	51,553
(3) Fitting out a new 48-place special child care centre cum 40-place early education and training centre at Yu Ming Court, Tseung Kwan O	3,752,200			—	3,493,839	258,361
(4) Fitting out for expanding Pak Tin Early Education and Training Centre at Pak Tin Estate	805,900			16,665	660,574	145,326
(5) Renovating Heep Hong Society Alice Louey Centre in Tai Po	1,396,300			—	1,172,648	223,652
(6) Fitting out for expanding Heep Hong Society Wan Tsui Centre in Chai Wan	1,880,400			—	1,525,550	354,850
(7) Renovating Pak Tin Early Education and Training Centre in Sham Shui Po	980,000			—	761,228	218,772
(8) Renovating Tin Ping Centre in Sheung Shui	2,059,000			1,889,631	1,919,631	139,369
(9) Renovating Wan Tsui Centre in Chai Wan	1,839,000			—	1,622,921	216,079
(10) Replacing the existing 49-seater private bus with a new 45-seater private bus for Mary Wong Centre	1,483,000			—	1,418,431	64,569
(11) Fitting out for reprovisioning of the special child care centre at Heep Hong Society Catherine Lo Centre to Pokfulam	4,372,000			3,108,058	3,108,058	1,263,942
(12) Fitting out for reprovisioning of Pak Tin Early Education and Training Centre to Pak Tin Estate, Sham Shui Po	4,030,000			245,000	245,000	3,785,000
(13) Meeting the cost of redevelopment of Heep Hong Society Catherine Lo Centre at Sandy Bay, Pokfulam	104,647,000			—	—	104,647,000
(14) Fitting out works for the reprovisioning of Heep Hong Society Catherine LoCentre in Pokfulam	2,369,000			—	—	2,369,000
(15) Replacing a vehicle for Chan Chung Hon Centre	1,543,000			—	—	1,543,000
	137,893,200	1,365,000	5,537,000	5,259,354	22,101,567	115,791,633

Lotteries Fund

STATEMENT OF APPROVED GRANTS—continued

Descriptions	Approved Grants	2013–14 Payments			Accumulated Payments to 31.3.2014	Unspent Balances (N=Not required)
	HK\$	Original Estimate HK\$	Amended Estimate HK\$	Actual HK\$	HK\$	HK\$
34. Helping Hand		3,698,000	5,333,000			
(1) Capital cost of building a new residential care home for the elderly at Cheung Muk Tau Holiday Centre for the Elderly in Sai Kung	82,198,000			—	71,458,372	10,739,628
(2) Replacing the existing 24-seater private bus with a new one for Cheung Muk Tau Holiday Centre for the Elderly in Sai Kung	415,000			—	365,237	49,763 <i>N</i>
(3) Renovating, furnishing and equipping and purchasing vehicle for in-situ expansion of Cheung Muk Tau Holiday Centre for the Elderly - Day Care Unit in Sai Kung	2,524,000			1,625,292	1,625,292	898,708
(4) Reinstatement works for the former Chak On Jockey Club Care Home in Sham Shui Po	904,000			776,545	776,545	127,455
(5) Reinstatement works for Helping Hand Kwai Shing West Care Home in Kwai Chung	774,000			704,240	704,240	69,760
(6) Reinstatement works for Helping Hand Tai Wo Hau Christa Tisdall Jockey Club Care Home in Kwai Chung	807,000			—	—	807,000
(7) Upgrading the provision of hospital beds in Helping Hand Lai Yiu Bradbury Care Home	585,000			—	—	585,000
	88,207,000	3,698,000	5,333,000	3,106,077	74,929,686	13,277,314
35. Heung Hoi Ching Kok Lin Association		2,505,000	5,911,000			
(1) Renovating the Buddhist Li Ka Shing Care and Attention Home for the Elderly	5,844,500			—	4,905,409	939,091
(2) Renovating Buddhist Po Ching Care and Attention Home for the Aged Women in Fanling	5,216,500			—	72,000	5,144,500
(3) Renovating, furnishing and equipping Buddhist Li Chong Yuet Ming Nursing Home for the Elderly in Sheung Shui	9,981,000			—	—	9,981,000
(4) Upgrading the provision of hospital beds in Buddhist Li Chong Yuet Ming Nursing Home for the Elderly	3,406,000			3,406,000	3,406,000	—
(5) Upgrading the provision of hospital beds in Buddhist Li Ka Shing Care and Attention Home for the Elderly	780,000			779,400	779,400	600
(6) Upgrading the provision of hospital beds in Buddhist Po Ching Care and Attention Home for the Aged Women	1,677,000			—	—	1,677,000
(7) Upgrading the provision of hospital beds in Buddhist Po Ching Home for the Aged Women	2,340,000			1,725,600	1,725,600	614,400
(8) Replacing the existing 17-seater diesel private bus with a new 17-seater diesel private bus for Buddhist Li Chong Yuet Ming Nursing Home for the Elderly	837,000			—	—	837,000
(9) Furnishing and equipping for upgrading the provision of hospital beds for Buddhist Li Ka Shing Care and Attention Home for the Elderly	2,080,000			—	—	2,080,000
	32,162,000	2,505,000	5,911,000	5,911,000	10,888,409	21,273,591
36. Hong Chi Association		12,467,000	18,138,000			
(1) Renovating, furnishing and equipping in-situ expansion of Hong Chi Children Home at Pinehill Village, Chung Nga Road, Tai Po	1,589,100			—	1,551,793	37,307 <i>N</i>
(2) Renovating the Jockey Club Hong Chi Sun Chui Workshop cum Hostel in Sha Tin	6,718,600			1,442,696	1,442,696	5,275,904
(3) Renovating Hong Chi Wan Tau Tong Centre at Wan Tau Tong Estate, Tai Po	2,802,800			—	2,440,637	362,163 <i>N</i>
(4) Fitting out a new district support centre for persons with disabilities at Shun Lee Estate, Kwun Tong	3,870,600			34,000	3,639,255	231,345
(5) Renovating Hong Chi Lei Muk Shue Hostel for in-situ expansion in Tsuen Wan	3,550,600			3,011,316	3,011,316	539,284
(6) Fitting out costs for reprovisioning the day care centre of Hong Chi Lei Mu Shue Centre	4,823,000			—	3,941,048	881,952

Lotteries Fund

STATEMENT OF APPROVED GRANTS—continued

Descriptions	Approved Grants HK\$	2013–14 Payments			Accumulated Payments to 31.3.2014 HK\$	Unspent Balances (N=Not required) HK\$
		Original Estimate HK\$	Amended Estimate HK\$	Actual HK\$		
(7) Renovating the Jockey Club Hong Chi Siu Sai Wan Workshop in Chai Wan	4,554,700			—	4,145,518	409,182
(8) Renovating Hong Chi Shui Choi Centre and Hong Chi Shui Choi Hostel in Tin Shui Wai	8,211,800			5,989,521	6,986,637	1,225,163
(9) Renovating Hong Chi Fu Heng Hostel at Tai Po	6,827,000			—	—	6,827,000
(10) Replacing the existing 25-seater private bus with a new 29-seater private bus for Hong Chi Morninghope School, Tuen Mun	695,000			—	—	695,000
(11) Purchasing a new vehicle for Hong Chi Morningjoy School, Yuen Long	747,000			649,897	649,897	97,103
(12) Replacing the existing 24-seater private bus with a new 26-seater diesel private bus for Hong Chi Pinehill No.3 School	1,875,000			1,827,262	1,827,262	47,738
(13) Undertaking fire safety/building safety rectification measures to meet the statutory requirements under the Residential Care Homes (Persons with Disabilities) Ordinance for Hong Chi Fu Shin Hostel	497,000			—	—	497,000
(14) Purchasing a vehicle for Hong Chi Pinehill No.2 School	903,000			—	—	903,000
(15) Replacing the existing vehicle for the Jockey Club Hong Chi School	685,000			—	—	685,000
(16) Replacing the existing vehicle for Hong Chi Ma Tau Kok Workshop	471,000			—	—	471,000
(17) Purchasing a new 56-seater private bus for Hong Chi Winifred Mary Cheung Morninghope School	1,196,000			—	—	1,196,000
	50,017,200	12,467,000	18,138,000	12,954,692	29,636,059	20,381,141
37. Hong Kong and Kowloon Kai Fong Women's Association Limited						
Renovating, purchasing furniture and equipment for Ting Sun Hui Chiu Nursery at Mei Lam Estate	705,600	—	—	—	501,768	203,832
38. Hong Kong Bodhi Siksa Society Limited		2,500,000	2,500,000			
(1) Carrying out slope maintenance works for the Hong Kong Bodhi Siksa Society Limited Care and Attention Home for the Aged, Tsuen Wan	504,800			8,063	161,250	343,550 N
(2) Renovating the Hong Kong Bodhi Siksa Society Limited Care and Attention Home for the Aged in Tsuen Wan	4,161,000			—	25,000	4,136,000
	4,665,800	2,500,000	2,500,000	8,063	186,250	4,479,550
39. Hong Kong Buddhist Association		3,062,000	12,267,000			
(1) Renovating, furnishing and equipping the Buddhist Sum Ma Shui Ying Care and Attention Home for the Elderly in Kwun Tong	14,558,800			10,262,992	13,298,630	1,260,170
(2) Fitting out the additional premises of Buddhist Ching Hang Neighbourhood Elderly Centre in Tsz Wan Shan	2,040,000			1,720,587	1,720,587	319,413
(3) Upgrading the provision of hospital beds in Buddhist Sum Ma Shui Ying Care and Attention Home for the Elderly	1,196,000			—	—	1,196,000
(4) Furnishing and equipping for upgrading the provision of hospital beds for Buddhist Sum Ma Shui Ying Care and Attention Home for the Elderly	1,378,000			—	—	1,378,000
	19,172,800	3,062,000	12,267,000	11,983,579	15,019,217	4,153,583
40. Hong Kong Catholic Marriage Advisory Council						
Fitting out the Western District Integrated Family Service Centre at Kennedy Town, HK	2,117,300	—	—	—	2,000,021	117,279

Lotteries Fund

STATEMENT OF APPROVED GRANTS—continued

Descriptions	Approved Grants	2013–14 Payments			Accumulated Payments to 31.3.2014	Unspent Balances (N=Not required)
	HK\$	Original Estimate HK\$	Amended Estimate HK\$	Actual HK\$	HK\$	HK\$
41. Hong Kong Children and Youth Services						
Purchasing vehicle, smart phones and furnishing and equipping Ma On Shan Youth Outreaching Social Work Team	594,000	—	586,000	585,655	585,655	8,345
42. Hong Kong Chinese Women's Club		1,357,000	4,829,000			
(1) Furnishing and equipping for setting up a new day care centre for the elderly in Kwun Tong	2,149,000			2,147,906	2,147,906	1,094
(2) Fitting out for setting up a new day care centre for the elderly in Kwun Tong	3,432,000			2,679,157	2,679,157	752,843
	5,581,000	1,357,000	4,829,000	4,827,063	4,827,063	753,937
43. Hong Kong Christian Mutual Improvement Society						
Renovating the Ko Chiu Road Centre of Christ Love for the Aged in Yau Tong	1,020,400	—	59,092	29,702	991,010	29,390 N
44. Hong Kong Christian Service		3,105,000	4,567,000			
(1) Fitting out a new 60-place day care centre for the elderly at Lok Wah (South) Estate	1,973,000			—	1,717,900	255,100
(2) Meeting the start-up costs of an integrated family service centre for initial two years	255,900			—	243,105	12,795
(3) Meeting the cost of conversion works, furnishing and equipping for the Yau Tsim Integrated Family Service Centre	3,428,300			421,588	3,285,106	143,194
(4) Fitting out the Morrison Hill Child Development Centre at Tang Shiu Kin Hospital, Wan Chai	443,600			37,828	440,238	3,362
(5) Fitting out for reprovisioning the So Uk Neighbourhood Elderly Centre to Un Chau Estate, Sham Shui Po	3,931,700			—	3,050,371	881,329
(6) Renovating the Shun Lee Neighbourhood Elderly Centre in Kwun Tong	1,299,600			—	1,221,898	77,702
(7) Replacing the existing 29-seater private bus with a new 38-seater private bus for Pui Oi School	1,610,000			—	1,543,703	66,297
(8) Renovating, furnishing and equipping Tai Hang Tung Nursery School in Tai Hang Tung	408,000			—	404,063	3,937 N
(9) Replacing two passenger lifts for Christian Ecumenical Building in Tsim Sha Tsui	1,793,000			—	19,500	1,773,500
(10) Fitting out for reprovisioning Lotus Day Care Centre for the Elderly to Sham Shui Po	2,162,000			1,969,122	1,969,122	192,878
(11) Purchasing a 14-seater liquefied petroleum gas private light bus for Shun Lee Home for the Elderly	867,000			845,830	845,830	21,170
(12) Fitting out for reprovisioning Sham Shui Po Integrated Home Care Services Team in Sham Shui Po	3,126,000			—	—	3,126,000
(13) Replacing two 7-seater diesel private cars with two new 13-seater liquefied petroleum gas private light buses for Sham Shui Po Integrated Home Care Services Team	1,694,000			—	—	1,694,000
(14) Replacing the existing 7-seater private car with a new 13-seater liquefied petroleum gas private light bus for Wan Hon Integrated Home Care Services Team	847,000			—	—	847,000
(15) Furnishing and equipping for upgrading the provision of hospital beds for Cheung Fat Home for the Elderly	429,000			—	—	429,000
	24,268,100	3,105,000	4,567,000	3,274,368	14,740,836	9,527,264
45. Hong Kong Council of Social Service						
Carrying out fire safety improvement works for the Duke of Windsor Social Service Building in Wan Chai	2,858,000	1,715,000	1,715,000	—	—	2,858,000

Lotteries Fund

STATEMENT OF APPROVED GRANTS—continued

Descriptions	Approved Grants	2013–14 Payments			Accumulated Payments to 31.3.2014	Unspent Balances (N=Not required)
	HK\$	Original Estimate HK\$	Amended Estimate HK\$	Actual HK\$	HK\$	HK\$
46. Hong Kong Down Syndrome Association						
Renovating Bradbury Parents Resource Centre in Wong Tai Sin	1,584,200	84,000	84,000	—	1,344,531	239,669
47. Hong Kong Family Welfare Society		2,228,000	2,228,000			
(1) Fitting out the Shun Lee Integrated Family Service Centre at Shun Lee Estate Community Centre	720,400			—	673,770	46,630
(2) Replacing the existing 7-seater private car with a new 14-seater liquefied petroleum gas private light bus for East Kowloon (Shun On) Centre	738,000			—	737,241	759 N
(3) Replacing the existing 8-seater private light bus with a new 14-seater liquefied petroleum gas private light bus for New Territories (Cheung Shan) Centre	741,000			—	740,441	559 N
(4) Replacing the existing 7-seater private car with a new 14-seater liquefied petroleum gas private light bus for New Territories (Tivoli) Centre	738,000			—	737,241	759 N
(5) Purchasing a 16-seater liquefied petroleum gas private light bus and essential equipment for Enhanced Home and Community Care Services Teams in Kwun Tong, Tsuen Wan and Islands	1,542,000			1,329,653	1,329,653	212,347
(6) Fitting out for reprovisioning the West Kowloon Centre - Shamshuipo (West) Integrated Family Service Centre to Un Chau Estate	6,142,000			—	—	6,142,000
(7) Replacing the existing 7-seater diesel private car with a new 14-seater liquefied petroleum gas private light bus for West Kowloon (Lai Kok) Centre	803,000			—	—	803,000
	11,424,400	2,228,000	2,228,000	1,329,653	4,218,346	7,206,054
48. Hong Kong Federation of Youth Groups		2,117,000	4,462,000			
(1) Redeveloping the Bradbury Centre at 55 Model Lane, North Point	158,160,000			—	138,584,905	19,575,095
(2) Renovating, furnishing and equipping the Ching Lok Kindergarten and Ching Lok Nursery in Sai Wan Ho	843,900			31,767	797,277	46,623 N
(3) Carrying out a business improvement project to implement a member relationship management system	2,687,900			—	2,586,629	101,271
(4) Furnishing and equipping Interactive Media Counselling Centre in Aberdeen	633,000			—	—	633,000
(5) Implementing a Cyber Youth Outreaching Project on a three-year pilot basis	5,200,000			1,611,200	4,696,550	503,450
(6) Fitting out an Interactive Media Counselling Centre in Aberdeen	5,532,000			20,385	5,121,165	410,835
	173,056,800	2,117,000	4,462,000	1,663,352	151,786,526	21,270,274
49. Hong Kong Housing Society						
Constructing a 100-place residential care home for the elderly in Sham Shui Po under an Urban Renewal Authority Development Scheme Project	28,470,000	—	—	—	—	28,470,000
50. Hong Kong Joint Council of Parents of the Mentally Handicapped						
Renovating Trailwalker Community Education Centre	936,000	—	—	—	—	936,000
51. Hong Kong Lutheran Social Service - The Lutheran Church - Hong Kong Synod Limited		2,165,000	2,165,000			
(1) Fitting out a new district support centre for persons with disabilities at 51 Sheung Shing Street, Homantin	3,064,800			155,451	2,940,793	124,007 N
(2) Fitting out for Cheer Lutheran Centre at Ching Ho Estate, Sheung Shui	2,063,500			—	1,972,822	90,678 N

Lotteries Fund

STATEMENT OF APPROVED GRANTS—continued

Descriptions	Approved Grants HK\$	2013–14 Payments			Accumulated Payments to 31.3.2014 HK\$	Unspent Balances (N=Not required) HK\$
		Original Estimate HK\$	Amended Estimate HK\$	Actual HK\$		
(3) Fitting out the additional premises of Sai Cho Wan Lutheran Centre for the Elderly in Kwun Tong	1,660,600			—	1,315,485	345,115
(4) Renovating Mr & Mrs Lawrence Wong Second Lutheran Home for the Elderly in Tseung Kwan O	7,085,000			556,518	6,526,690	558,310
(5) Fitting out the additional premises of school social work office in Sham Shui Po	1,002,000			49,598	982,498	19,502 N
(6) Upgrading the provision of hospital beds in Fung Tak Lutheran Home for the Elderly	454,000			416,500	416,500	37,500 N
(7) Renovating, furnishing and equipping Heng Fa Chuen Lutheran Day Nursery in Chai Wan	1,953,000			—	—	1,953,000
(8) Replacing a vehicle for Cheung Ching Lutheran Centre for the Disabled	766,000			—	—	766,000
(9) Renovating, furnishing and equipping Chan En Mei Lutheran Day Nursery in Cheung Chau	3,953,000			—	—	3,953,000
	22,001,900	2,165,000	2,165,000	1,178,067	14,154,788	7,847,112
52. Hong Kong PHAB Association		—	—			
(1) Fitting out a new supported hostel for mentally/physically handicapped persons at Pokfulam Skills Centre in Aberdeen	8,644,700			—	8,644,680	20 N
(2) Renovating, furnishing and equipping Kowloon East PHAB Centre in Wong Tai Sin	3,096,000			—	—	3,096,000
(3) Renovating, furnishing and equipping Hong Kong Island PHAB Centre in Chai Wan	3,056,000			—	—	3,056,000
	14,796,700	—	—	—	8,644,680	6,152,020
53. Hong Kong Playground Association		1,451,000	6,278,000			
(1) Furnishing and equipping a new integrated children and youth services centre at Choi Tak Estate, Kwun Tong	604,000			—	—	604,000
(2) Fitting out a new integrated children and youth services centre at Choi Tak Estate, Kwun Tong	6,350,000			5,672,746	5,871,946	478,054
	6,954,000	1,451,000	6,278,000	5,672,746	5,871,946	1,082,054
54. Hong Kong Red Cross		21,870,000	21,870,000			
(1) Redeveloping Hong Kong Red Cross Headquarters at Hoi Ting Road, West Kowloon Reclamation Area	83,780,000			—	—	83,780,000
(2) Replacing three existing private buses with three 35-seater buses for Hong Kong Red Cross Princess Alexandra School in Kwun Tong	6,207,000			5,253,249	5,253,249	953,751 N
(3) Renovating Hong Kong Red Cross Shun Lee Hostel in Kwun Tong	3,751,000			—	—	3,751,000
	93,738,000	21,870,000	21,870,000	5,253,249	5,253,249	88,484,751
55. Hong Kong Sheng Kung Hui Welfare Council		13,159,000	13,159,000			
(1) Constructing, furnishing and equipping the elderly service complex at Tseung Kwan O Area 22, Sai Kung	104,223,000			—	73,523,593	30,699,407
(2) Renovating the Hong Kong Sheng Kung Hui Li Ka Shing Care and Attention Home and Day Care Centre for the Elderly	3,956,500			32,883	3,723,166	233,334
(3) Fitting out the additional premises of Tai Wo Neighbourhood Elderly Centre at Tai Wo Estate, Tai Po	1,196,600			—	844,818	351,782
(4) Fitting out for reprovisioning St. Luke's Settlement Neighbourhood Elderly Centre to Kwun Lung Lau	2,246,700			—	2,054,668	192,032
(5) Fitting out the additional premises of Chuk Yuen Canon Martin District Elderly Community Centre in Wong Tai Sin	1,636,200			—	1,473,380	162,820

Lotteries Fund

STATEMENT OF APPROVED GRANTS—continued

Descriptions	Approved Grants	2013–14 Payments			Accumulated Payments to 31.3.2014	Unspent Balances (N=Not required)
	HK\$	Original Estimate HK\$	Amended Estimate HK\$	Actual HK\$	HK\$	HK\$
(6) Meeting the operating cost to implement a 3-year pilot scheme on home care services for frail elders in Wong Tai Sin and Sai Kung	23,760,000			5,900,000	18,150,000	5,610,000
(7) Furnishing and equipping a new district support centre for persons with disabilities at Leung King Estate, Tuen Mun	423,000			—	—	423,000
(8) Fitting out a new district support centre for persons with disabilities at Leung King Estate, Tuen Mun	4,823,000			—	21,245	4,801,755
(9) Renovating Hong Kong Sheng Kung Hui Li Ka Shing Care and Attention Home for the Elderly and Hong Kong Sheng Kung Hui Li Ka Shing Day Care Centre for the Elderly in Sham Shui Po	10,517,000			138,900	166,900	10,350,100
(10) Upgrading the provision of hospital beds in Hong Kong Sheng Kung Hui Lam Woo Home for the Elderly	442,000			—	—	442,000
(11) Upgrading the provision of hospital beds in Hong Kong Sheng Kung Hui Li Ka Shing Care and Attention Home for the Elderly	429,000			—	—	429,000
(12) Upgrading the provision of hospital beds in Hong Kong Sheng Kung Hui Nursing Home	3,250,000			2,472,500	2,472,500	777,500
(13) Renovating Lok Wah Day Care Centre for the Elderly in Ngau Tau Kok	2,631,000			23,698	23,698	2,607,302
(14) Purchasing a new 14-seater liquefied petroleum gas private light bus for Kowloon City Integrated Home Care Services Team	816,000			—	—	816,000
(15) Furnishing and equipping for reprovisioning of Kowloon City Children and Youth Integrated Service Centre Jockey Club Youth Express in Kowloon	512,000			—	—	512,000
(16) Fitting out for reprovisioning Kowloon City Children and Youth Integrated Service Centre Jockey Club Youth Express in Kowloon	7,790,000			—	—	7,790,000
(17) Fitting out for reprovisioning Sham Shui Po Integrated Home Care Services Team	1,075,000			—	—	1,075,000
(18) Furnishing and equipping for upgrading the provision of hospital beds for Hong Kong Sheng Kung Hui Lam Woo Home for the Elderly	1,170,000			—	—	1,170,000
(19) Furnishing and equipping for upgrading the provision of hospital beds for Hong Kong Sheng Kung Hui Li Ka Shing Care and Attention Home for the Elderly	1,209,000			—	—	1,209,000
(20) Implementing a 24-month pilot project to offer training and employment for programme workers to work in rehabilitation service units and residential care homes for the elderly	1,715,000			—	—	1,715,000
(21) Renovating, furnishing and equipping for Hong Kong Sheng Kung Hui Kei Oi Nursery School in Sham Shui Po	648,000			—	—	648,000
	174,469,000	13,159,000	13,159,000	8,567,981	102,453,968	72,015,032
56. Hong Kong Single Parents Association						
Enhanced New Dawn Project from October 2007 to March 2010 in Kowloon City/Yau Tsim Mong/Sham Shui Po	1,845,000	—	—	(815,961)	690,039	1,154,961
57. Hong Kong Social Workers Association						
Implementing the Supportive Supervision Scheme on a three-year pilot basis	3,962,000	—	—	—	—	3,962,000
58. Hong Kong Society for Rehabilitation		2,190,000	2,716,000			
(1) Consultancy fee (Stage 1) for slope investigation and remedial works at Lam Tin Complex	498,000			—	299,200	198,800
(2) Slope upgrading and associated drainage works for Lam Tin Complex in Kwun Tong	6,313,000			2,715,185	2,715,185	3,597,815

Lotteries Fund

STATEMENT OF APPROVED GRANTS—continued

Descriptions	Approved Grants	2013–14 Payments			Accumulated Payments to 31.3.2014	Unspent Balances (N=Not required)
	HK\$	Original Estimate HK\$	Amended Estimate HK\$	Actual HK\$	HK\$	HK\$
(3) Consultancy fee for slope works (Stage 1) at Lam Tin Complex in Kwun Tong	420,000			—	—	420,000
	7,231,000	2,190,000	2,716,000	2,715,185	3,014,385	4,216,615
59. Hong Kong Society for the Aged		12,518,000	12,518,000			
(1) Renovating, furnishing and equipping SAGE Tung Lin Kok Yuen Home for the Elderly in Tseung Kwan O	8,874,900			183,156	6,344,061	2,530,839
(2) Renovating SAGE Madam Ho Sin Hang Home for the Elderly in Pokfulam	11,300,400			344,631	8,280,557	3,019,843
(3) Purchasing a 15-seater liquefied petroleum gas private light bus for Mrs Wong Yee Jar Jat Memorial Home for the Elderly	855,000			854,126	854,126	874 N
(4) Renovating SAGE Kwan Fong Nim Chee Home for the Elderly in Sha Tin	20,541,000			179,000	179,000	20,362,000
(5) Renovating, furnishing and equipping for converting home for the aged places into long term care places for Kai Yip Home for the Elderly in Kowloon Bay	6,093,000			—	30,000	6,063,000
(6) Purchasing a 15-seater liquefied petroleum gas private light bus for Kai Yip Home for the Elderly	885,000			885,000	885,000	—
(7) Purchasing a 15-seater liquefied petroleum gas private light bus for Mrs Y K Fung Home for the Elderly	885,000			885,000	885,000	—
(8) Replacing a vehicle for SAGE Eastern District Day Care Centre for the Elderly	827,000			—	—	827,000
(9) Replacing vehicles for SAGE Hong Kong East Integrated Home Care Services	1,367,000			1,367,000	1,367,000	—
(10) Renovating, furnishing and equipping Shek Wai Kok Home for the Elderly in Tsuen Wan	10,090,000			30,000	30,000	10,060,000
(11) Furnishing and equipping for setting up a new day care centre for the elderly in Kwai Tsing	3,108,000			—	—	3,108,000
(12) Renovating SAGE Sun Kwai Hing Gardens Day Care Centre for the Elderly in Kwai Chung	2,141,000			19,281	19,281	2,121,719
(13) Fitting out a new day care centre for the elderly in Kwai Tsing	4,909,000			—	—	4,909,000
	71,876,300	12,518,000	12,518,000	4,747,194	18,874,025	53,002,275
60. Hong Kong Society for the Blind		1,259,000	1,259,000			
(1) Renovating the Hong Kong Society for the Blind Yuen Long Home for the Aged Blind	4,852,800			—	475,266	4,377,534 N
(2) Repairing drainage and plumbing system and replacing the lifts for the Hong Kong Jockey Club Centre for the Blind (West Wing) in Sham Shui Po	1,943,100			—	524,892	1,418,208
(3) Rectifying the exterior wall for the Factory for the Blind in To Kwa Wan	2,058,300			—	494,600	1,563,700
(4) Upgrading the provision of hospital beds in Bradbury Care and Attention Home for the Aged Blind	429,000			—	—	429,000
(5) Renovating Jockey Club Tuen Mun Home for the Aged Blind	2,819,000			—	—	2,819,000
(6) Furnishing and equipping for upgrading the provision of hospital beds for Jockey Club Tuen Mun Home for the Aged Blind	1,638,000			—	—	1,638,000
	13,740,200	1,259,000	1,259,000	—	1,494,758	12,245,442
61. Hong Kong Society for the Deaf						
Renovating the Hong Kong Society for the Deaf Bradbury Special Child Care Centre in Kowloon City	1,736,900	1,000,000	1,000,000	—	1,529,762	207,138

Lotteries Fund

STATEMENT OF APPROVED GRANTS—continued

Descriptions	Approved Grants	2013–14 Payments			Accumulated Payments to 31.3.2014	Unspent Balances (N=Not required)
	HK\$	Original Estimate HK\$	Amended Estimate HK\$	Actual HK\$	HK\$	HK\$
62. Hong Kong Society for the Protection of Children		3,705,000	3,705,000			
(1) Renovating the Portland Street Day Nursery at Portland Street, Mongkok	1,335,100			—	1,057,459	277,641
(2) Renovating, furnishing and equipping Sze Wu Shu Min Nursery School, Tseung Kwan O	1,598,900			52,123	1,513,741	85,159
(3) Implementing a new human resource management system and a new financial management system under business improvement project	1,688,000			—	1,254,854	433,146
(4) Renovating Children's Residential Home in Mong Kok	7,410,000			—	—	7,410,000
	<u>12,032,000</u>	<u>3,705,000</u>	<u>3,705,000</u>	<u>52,123</u>	<u>3,826,054</u>	<u>8,205,946</u>
63. Hong Kong Southern District Women's Association						
Fitting out for reprovisioning the Mutual Help Child Care Centre from Wong Chuk Hang Estate to Shek Pai Wan Estate	694,800	—	35,000	—	654,065	40,735
64. Hong Kong Student Aid Society		543,000	543,000			
(1) Professional fee for carrying out slope stability study for Island Hostel	544,800			—	518,188	26,612
(2) Renovating the Hong Kong Student Aid Society Holland Hostel in Kwun Tong	10,864,000			49,300	9,689,228	1,174,772
	<u>11,408,800</u>	<u>543,000</u>	<u>543,000</u>	<u>49,300</u>	<u>10,207,416</u>	<u>1,201,384</u>
65. Hong Kong Tuberculosis, Chest and Heart Diseases Association		—	—			
(1) Upgrading the provision of hospital beds in Freni Care and Attention Home	936,000			—	—	936,000
(2) Furnishing and equipping for upgrading the provision of hospital beds for Freni Care and Attention Home	949,000			—	—	949,000
	<u>1,885,000</u>	<u>—</u>	<u>—</u>	<u>—</u>	<u>—</u>	<u>1,885,000</u>
66. Hong Kong Women Foundation Limited						
Renovating the Ho Kwok Pui Chun Social Centre for the Elderly in Central	1,044,500	—	80,615	55,050	1,018,935	25,565 N
67. Hong Kong Young Women's Christian Association		5,850,000	5,850,000			
(1) Renovating the Wan Wah Care and Attention Home for the Elderly	11,218,000			—	10,048,181	1,169,819
(2) Carrying out a business improvement project to implement a service and membership management system	1,421,500			—	1,195,700	225,800
(3) Renovating the Kowloon City Integrated Home Care Services Team	1,423,900			170,957	1,386,145	37,755 N
(4) Renovating the Ellen Li District Elderly Community Centre in Fanling	1,378,600			369,448	1,331,706	46,894
(5) Renovating, furnishing and equipping the Cheng Pon Hing Hostel for the Elderly at Lei Tung Estate, Ap Lei Chau	13,893,300			2,924,633	7,652,190	6,241,110
(6) Replacing the chiller system for Chi Po Neighbourhood Elderly Centre and Jockey Club Sham Shui Po Integrated Social Service Centre in Sham Shui Po	1,950,000			—	—	1,950,000
(7) Replacing the existing 7-seater private car with a new 14-seater liquefied petroleum gas private light bus for YWCA Ming Yue District Elderly Community Centre Integrated Home Care Services Team in Eastern District	792,000			769,558	769,558	22,442 N
(8) Fitting out the additional premises of YWCA Kwun Lung Lau Community Work Office in Kennedy Town	892,000			829,691	829,691	62,309
(9) Renovating, furnishing and equipping Tai Hon Fan Nursery School in Central	2,355,000			—	—	2,355,000

Lotteries Fund

STATEMENT OF APPROVED GRANTS—continued

Descriptions	Approved Grants	2013–14 Payments			Accumulated Payments to 31.3.2014	Unspent Balances (N=Not required)
	HK\$	Original Estimate HK\$	Amended Estimate HK\$	Actual HK\$	HK\$	HK\$
(10) Upgrading the provision of hospital beds in Hong Kong Young Women's Christian Association Wan Wah Care and Attention Home for the Elderly	1,729,000			—	—	1,729,000
(11) Purchasing a 14-seater liquefied petroleum gas private light bus for Sham Shui Po Integrated Home Care Services Team	800,000			—	—	800,000
(12) Furnishing and equipping Cheng Pon Hing Care and Attention Home for the Elderly	532,000			—	—	532,000
	38,385,300	5,850,000	5,850,000	5,064,287	23,213,171	15,172,129
68. Housing Department		20,362,000	20,362,000			
(1) Fitting out welfare projects in various housing estates by the main contractors	94,361,000			—	68,243,562	26,117,438
(2) Fitting out the Po Leung Kuk Dorothy Lee Creche at Kwong Tin Estate	580,000			—	—	580,000
(3) Fitting out the Pok Oi Hospital Care and Attention Home at Tin Shui Estate	9,295,000			—	8,907,197	387,803
(4) Reprovisioning the Society for the Rehabilitation of Offenders Nap Kay Ex-prisoners Hostel under the Comprehensive Redevelopment Programme	1,822,000			—	1,004,872	817,128
(5) Reprovisioning the Yan Chai Hospital Ju Ching Chu Day Nursery under the Comprehensive Redevelopment Programme	1,178,000			—	1,130,612	47,388
(6) Fitting out the Caritas - Hong Kong Home Help Centre at Tsz Ching Estate	2,970,000			—	2,726,135	243,865
(7) Fitting out the Hong Kong Federation of Youth Groups Children and Youth Centre cum study/reading room at Chung On Estate by New Works Section	2,055,000			—	1,275,651	779,349
(8) Fitting out the Po Leung Kuk Social Centre for the Elderly at Sau Mau Ping Estate by New Works Section	1,673,000			—	1,247,172	425,828
(9) Fitting out a social centre for the elderly at Kwai Fong Estate	774,000			—	602,745	171,255
(10) Fitting out a children and youth centre cum study/reading room at Tung Chung Area 10, Commercial Complex, Lan Tau Island by New Works Section	1,600,000			—	1,597,101	2,899
(11) Fitting out a day nursery at Tung Chung Area 10, Commercial Complex, Lan Tau Island by New Works Section	1,193,000			—	1,182,813	10,187
(12) Fitting out the Salvation Army Day Nursery-cum-Creche at Pak Tin Estate Redevelopment Phase II	2,460,000			—	1,492,012	967,988
(13) Carrying out construction works for 6 welfare projects at Tak Tin Development at Lam Tin	79,991,000			—	77,595,876	2,395,124
(14) Fitting out the day nursery at Tong Ming Court by New Works Section	1,495,600			—	1,466,000	29,600
(15) Fitting out the day nursery at Kwai Shing East, Phase 2 by New Works Section	2,347,600			—	2,076,673	270,927
(16) Fitting out the children and youth centre cum study/reading room at Tong Ming Court by New Works Section	2,075,000			—	2,034,000	41,000
(17) Fitting out the children and youth centre cum study/reading room at Ma Hang, Phase 3 by New Works Section	5,095,000			—	4,015,517	1,079,483
(18) Fitting out the day nursery at Shek Yam Estate, Phase 2 by New Works Section	2,539,600			—	2,028,735	510,865
(19) Fitting out the day nursery at Tin Shui Wai Area 31, Phase 4 by New Works Section	3,334,000			—	2,859,152	474,848
(20) Fitting out a half-way house for discharged mental patients at Fanling Area 49A by New Works Section	1,292,600			—	1,292,599	1
(21) Fitting out the children and youth centre cum study/reading room at Tuen Mun Area 29, Phase 2 by New Works Section	10,090,200			—	3,555,200	6,535,000

Lotteries Fund

STATEMENT OF APPROVED GRANTS—continued

Descriptions	Approved Grants HK\$	2013–14 Payments			Accumulated Payments to 31.3.2014 HK\$	Unspent Balances (N=Not required) HK\$
		Original Estimate HK\$	Amended Estimate HK\$	Actual HK\$		
(22) Fitting out the day nursery at Tin Shui Wai Area 3 Phase 5 by New Works Section	1,865,100			—	1,228,700	636,400
(23) Fitting out the day nursery at Tin Shui Wai Area 102	4,597,000			—	3,894,110	702,890
(24) Fitting out the day nursery at Tung Chung Area 30	2,219,000			—	1,887,539	331,461
(25) Fitting out the integrated team at Tin Shui Wai Area 102	5,543,000			—	4,927,918	615,082
(26) Fitting out the integrated team at Tuen Mun Area 52	5,688,000			—	3,296,700	2,391,300
(27) Fitting out the integrated team at Shatin Area 14B	3,332,000			(149,109)	2,159,790	1,172,210 N
(28) Fitting out the social centre for the elderly at Shatin Area 14B	840,000			(60,889)	779,094	60,906 N
(29) Fitting out the day nursery at Tin Shui Wai Area 101, Public Housing Estate, Phase 3	4,587,000			—	2,721,388	1,865,612
(30) Fitting out the day nursery at Tin Shui Wai Area 110, Public Housing Estate, Phase 3	3,742,000			—	3,235,334	506,666
(31) Fitting out the integrated team at Ko Chiu Road, Public Housing Estate, Phase 5	3,118,000			—	3,054,527	63,473
(32) Constructing a 140-place residential care home for the elderly cum a 20-place day care unit at Fu Cheong Estate	24,754,000			—	23,715,130	1,038,870
(33) Constructing a 150-place residential care home for the elderly at Un Chau Street Phase 4 Community Centre Site	24,621,000			—	18,619,737	6,001,263
(34) Fitting out a day nursery at Tseung Kwan O Area 73A	2,101,000			—	1,979,951	121,049
(35) Fitting out a special child care centre cum early education and training centre at Tung Chung Area 31	3,538,000			—	3,528,537	9,463
(36) Constructing an integrated children and youth services centre and an integrated family services centre at a government complex in Aldrich Bay Reclamation Area	28,310,000			—	16,472,929	11,837,071
(37) Constructing a 100-place residential care home for the elderly cum 20-place day care unit at Shek Kip Mei Estate Phase 2	43,840,000			—	26,939,532	16,900,468
(38) Constructing a 150-place residential care home for the elderly at the site of ex-Cheung Sha Wan Police Quarters in Sham Shui Po	47,404,000			3,534,750	35,479,932	11,924,068
(39) Constructing a 100-place residential care home for the elderly in Sha Tin Area 52	26,656,000			9,476,857	20,916,146	5,739,854
(40) Constructing a 100-place residential care home for the elderly in a public housing estate development in Tung Chung Area 56	46,861,000			—	1,181,541	45,679,459
(41) Constructing a 80-place day care centre for the elderly at Ex-Tai Wo Hau Factory Estate Site, Tsuen Wan	38,662,000			—	—	38,662,000
	550,499,700	20,362,000	20,362,000	12,801,609	362,352,159	188,147,541
69. Improvement Programme of Elderly Centres		25,732,000	44,500,000			
(1) Renovating Hong Kong Christian Service Wan Hon District Elderly Community Centre	5,007,000			4,023,525	4,023,525	983,475
(2) Renovating Neighbourhood Advice-Action Council Sham Shui Po District Elderly Community Centre cum Integrated Home Care Services Team	5,795,000			1,533,821	1,533,821	4,261,179
(3) Renovating, furnishing and equipping Lei Fook Neighbourhood Elderly Centre in Ap Lei Chau	2,564,000			2,196,347	2,196,347	367,653
(4) Renovating Caritas District Elderly Centre - Yuen Long	4,636,000			—	—	4,636,000
(5) Renovating Chuk Yuen Canon Martin District Elderly Community Centre	4,636,000			3,803,620	3,803,620	832,380
(6) Renovating Chan Hing Social Service Centre	4,636,000			2,588,690	2,588,690	2,047,310
(7) Renovating International Women's League Social Centre for the Elderly	2,958,000			2,531,750	2,531,750	426,250

Lotteries Fund

STATEMENT OF APPROVED GRANTS—continued

Descriptions	Approved Grants HK\$	2013–14 Payments			Accumulated Payments to 31.3.2014 HK\$	Unspent Balances (N=Not required) HK\$
		Original Estimate HK\$	Amended Estimate HK\$	Actual HK\$		
(8) Renovating, furnishing and equipping the Yuen Yuen Institute Fanling Social Service Centre	1,796,000			1,631,872	1,651,872	144,128
(9) Renovating, furnishing and equipping Asbury Methodist Social Service Social Centre for the Elderly	2,535,000			1,931,043	1,931,043	603,957
(10) Renovating Ching Chung Taoist Association of Hong Kong Limited Rev. Hau Po Woon Social Centre for the Elderly	2,465,000			1,316,103	1,316,103	1,148,897
(11) Improvement works for Salvation Army Tai Po Integrated Services for Senior Citizens Tai Po Multi-service Centre for Senior Citizens	5,007,000			3,670,422	3,670,422	1,336,578
(12) Renovating, furnishing and equipping The Endeavourers, Hong Kong Bert James Young Social Centre for the Elderly	2,535,000			2,102,945	2,191,785	343,215
(13) Fitting out for reprovisioning Caritas Sha Tin Elderly Centre	3,519,000			—	—	3,519,000
(14) Improvement works for Caritas Kwun Tong Elderly Centre	3,519,000			—	—	3,519,000
(15) Improvement works for Yan Chai Hospital Mrs Tsang Wing Neighbourhood Elderly Centre	3,519,000			—	—	3,519,000
(16) Improvement works for Chinese Young Men's Christian Association of Hong Kong Tin Ping Neighbourhood Elderly Centre	2,112,000			—	—	2,112,000
(17) Improvement works, furnishing and equipping Baptist Oi Kwan Social Service Lai Yiu Neighbourhood Elderly Centre	3,619,000			—	—	3,619,000
(18) Improvement works for Po Leung Kuk Vicwood K.T. Chong Neighbourhood Elderly Centre	2,464,000			—	—	2,464,000
(19) Improvement works for Jordan Valley KaiFong Welfare Association Choi Ha Social Centre for the Elderly	2,219,000			2,049,150	2,049,150	169,850
(20) Improvement works for Hong Kong Mutual Encouragement Association Limited Jane Shu Tsao Social Centre for the Elderly	2,465,000			1,620,567	1,620,567	844,433
(21) Improvement works for the Chinese Rhenish Church - Hong Kong Synod Wo Che Rhenish Social Centre for the Elderly	1,479,000			1,171,118	1,171,118	307,882
(22) Improvement works for Chung Sing Benevolent Society Gan Low Khoon Choo Social Centre for the Elderly	1,972,000			—	—	1,972,000
(23) Improvement works for Hong Kong Society for the Aged Chan Tseng Hsi Kwai Chung District Elderly Community Centre	6,954,000			—	—	6,954,000
(24) Improvement works for Hong Kong Society for the Aged Rotary Club of Hong Kong Northwest Neighbourhood Elderly Centre	2,464,000			54,000	54,000	2,410,000
(25) Improvement works for Hong Kong Society for the Aged Kwai Hing Neighbourhood Elderly Centre	2,464,000			54,000	54,000	2,410,000
(26) Improvement works, furnishing and equipping for Free Methodist Church of Hong Kong Bradbury Chuk Yuen Social Service Centre	2,042,000			—	—	2,042,000
(27) Improvement works for Hong Kong Mutual Encouragement Association Limited Cheng Yu Tung Social Centre for the Elderly	2,219,000			1,899,050	1,899,050	319,950
(28) Improvement works for Po Leung Kuk Mrs Maria Cheung Lifelong Learning Institute for the Senior	2,465,000			1,003,500	1,003,500	1,461,500
(29) Improvement works for ELCHK, Social Service Head Office Lutheran Healthy Aging Club	2,219,000			—	—	2,219,000
(30) Improvement works for Hong Kong Sheng Kung Hui Welfare Council Holy Carpenter Church District Elderly Community Centre	5,795,000			2,090,349	2,090,349	3,704,651
(31) Improvement works for Hong Kong Sheng Kung Hui Welfare Council Western District Elderly Community Centre	5,795,000			235,985	235,985	5,559,015
(32) Improvement works for ELCHK, Social Service Head Office Shatin Multi-service Centre for the Elderly	5,795,000			—	—	5,795,000
(33) Improvement works for Sik Sik Yuen Ho Kin District Community Centre for Senior Citizens	5,795,000			—	—	5,795,000

Lotteries Fund

STATEMENT OF APPROVED GRANTS—continued

Descriptions	Approved Grants HK\$	2013–14 Payments			Accumulated Payments to 31.3.2014 HK\$	Unspent Balances (N=Not required) HK\$
		Original Estimate HK\$	Amended Estimate HK\$	Actual HK\$		
(34) Improvement works for St. James Settlement Central and Western District Elderly Community Centre	5,216,000			—	—	5,216,000
(35) Improvement works for St. James' Settlement Wun Sha Centre for the Elderly	2,465,000			—	—	2,465,000
(36) Improvement works for Caritas Elderly Centre - Lai Kok	3,168,000			—	—	3,168,000 N
(37) Improvement works for Caritas Tin Yuet Elderly Centre	2,464,000			—	—	2,464,000
(38) Improvement works for Chung Shak Hei (Cheung Chau) Home for the Aged Limited Wan Ho Kan Neighbourhood Elderly Centre	2,464,000			—	—	2,464,000
(39) Improvement works for Fung Kai Public School Fung Kai Neighbourhood Elderly Centre	3,519,000			—	—	3,519,000
(40) Improvement works for Hong Kong PHAB Association Stanley/Shek O Neighbourhood Elderly Centre	3,519,000			491,733	491,733	3,027,267
(41) Improvement works for Tung Wah Group of Hospitals Fong Yun Wah Neighbourhood Elderly Centre	3,519,000			—	—	3,519,000
(42) Improvement works, furnishing and equipping Association of Baptists for World Evangelism (HK) Limited Lai King Bradbury Elderly Centre	2,044,000			928,237	928,237	1,115,763
(43) Improvement works for Lok Sin Tong Chan Lai Jeong Kiu Social Centre for the Elderly	2,219,000			—	—	2,219,000
(44) Improvement works for the Tsung Tsin Mission of Hong Kong Fuk Hong Social Centre for the Elderly	2,219,000			—	—	2,219,000
(45) Improvement works for HK Lutheran Social Service, the Lutheran Church - HK Synod Ltd. Peninsula Lions Club Jubilee Lutheran Centre for the Elderly	2,219,000			48,000	48,000	2,171,000
(46) Improvement works, furnishing and equipping Methodist Centre Methodist Southorn Centre for the Elderly	2,044,000			1,330,688	1,330,688	713,312
(47) Improvement works for Pok Oi Hospital Wong Muk Fung Memorial Elderly Health Support & Learning Centre	1,479,000			—	—	1,479,000
(48) Improvement works for Hong Kong Young Women's Christian Association Ellen Li District Elderly Community Centre	6,375,000			—	—	6,375,000
(49) Improvement works for Aberdeen Kai-fong Welfare Association Social Service Centre Jockey Club Wong Chi Keung District Community Centre	5,216,000			—	—	5,216,000
(50) Improvement works for Christian Family Service Centre Shun On District Elderly Community Centre	5,216,000			—	—	5,216,000
(51) Improvement works for Yan Oi Tong Woo Chung District Elderly Community Centre	5,007,000			—	—	5,007,000
(52) Improvement works for Sik Sik Yuen Ho Chui District Community Centre for Senior Citizens	4,507,000			—	—	4,507,000
(53) Improvement works for Sik Sik Yuen Ho Wing Neighbourhood Centre for Senior Citizens	2,464,000			—	—	2,464,000
(54) Improvement works for Caritas Tung Tau Elderly Centre	3,519,000			—	—	3,519,000
(55) Improvement works for SAGE Kai Yip Neighbourhood Centre for the Elderly	3,519,000			—	—	3,519,000
(56) Improvement works for Hong Kong-Macao Conference of Seventh-Day Adventist Church Siu Sai Wan Neighbourhood Elderly Centre of Seventh-day Adventists	2,464,000			—	—	2,464,000
(57) Improvement works for Heung Hoi Ching Kok Lin Association Buddhist Ho Wong Cheong Po Neighbourhood Elderly Centre	2,464,000			—	—	2,464,000
(58) Improvement works furnishing and equipping Association of Baptists for World Evangelism (Hong Kong) Ltd. Po Lam Baptist Church Bradbury Neighbourhood Elderly Centre	2,566,000			—	—	2,566,000
(59) Improvement works for Women's Welfare Club, Western District Hong Kong Kwan Kai Ming Memorial Chung Hok Elderly Centre	2,465,000			—	—	2,465,000

Lotteries Fund

STATEMENT OF APPROVED GRANTS—continued

Descriptions	Approved Grants	2013–14 Payments			Accumulated Payments to 31.3.2014	Unspent Balances (N=Not required)
	HK\$	Original Estimate HK\$	Amended Estimate HK\$	Actual HK\$	HK\$	HK\$
(60) Improvement works for Tsung Tsin Mission of Hong Kong Jubilee Social Centre for the Elderly	2,465,000			—	—	2,465,000
(61) Improvement works for Agency for Volunteer Service Western Garden Social Centre for the Elderly	1,972,000			—	—	1,972,000
(62) Improvement works, furnishing and equipping Pentecostal Church of Hong Kong Ltd. Fung Tak Care and Health Elderly Centre	2,291,000			—	—	2,291,000
(63) Improvement works, furnishing and equipping St. James' Settlement Retired Persons Service Centre	1,972,000			—	—	1,972,000
(64) Improvement works for Christian and Missionary Alliance Church Union Hong Kong Ltd. Riviera Gardens Elderly Learning Centre	2,537,000			—	—	2,537,000
(65) Improvement works, furnishing and equipping Pentecostal Church of HK Choi Wan Neighbourhood Elderly Centre	3,621,000			—	—	3,621,000
(66) Improvement works for Caritas Elderly Centre - Lai Kok	3,519,000			—	—	3,519,000
(67) Improvement works for NAAC Nga Yin Association Neighbourhood Elderly Centre	3,519,000			—	—	3,519,000
(68) Fitting out NAAC Pak Tin Social Centre for the Elderly	2,465,000			—	—	2,465,000
(69) Improvement works for HKLSS, Lutheran Church - HK Synod Ltd. Sun Chui Lutheran Centre for the Elderly	2,816,000			—	—	2,816,000
(70) Improvement works for HKLSS, Lutheran Church - HK Synod Ltd. Rhythm Garden Lutheran Centre for the Elderly	2,464,000			—	—	2,464,000
(71) Improvement works for Sik Sik Yuen Ho Wong Neighbourhood Centre for Senior Citizens	2,816,000			—	—	2,816,000
(72) Improvement works for Sik Sik Yuen Ho Ning Social Centre for Senior Citizens	2,219,000			—	—	2,219,000
(73) Improvement works for Po Leung Kuk Lo Yau Yuk Sheung Neighbourhood Elderly Centre	2,464,000			—	—	2,464,000
(74) Improvement works for Yan Chai Hospital Tang Bik Wan Memorial Neighbourhood Elderly Centre	2,464,000			—	—	2,464,000
(75) Improvement works for Hong Kong Christian Service Fortune Neighbourhood Elderly Centre	2,464,000			—	—	2,464,000
(76) Improvement works, furnishing and equipping Baptist Oi Kwan Social Service Tsing Yi Neighbourhood Elderly Centre	2,214,000			—	—	2,214,000
(77) Improvement works for HK & Kowloon Kaifong Women's Assn. Ltd. Tsang Hui Yuk Wan Social Centre for the Elderly	2,465,000			—	—	2,465,000
(78) Improvement works for Lok Sin Tong Benevolent Society, Kowloon Wan Lap Keung Social Centre for the Elderly	2,465,000			—	—	2,465,000
(79) Improvement works, furnishing and equipping Mission Covenant Church Limited Yiu On Tong Social Centre for the Elderly	2,537,000			—	—	2,537,000
(80) Improvement works for Hong Kong & Macau Lutheran Church Kei Fuk Elderly Centre	2,465,000			—	—	2,465,000
	254,018,000	25,732,000	44,500,000	40,306,515	40,415,355	213,602,645
70. International Social Service (Hong Kong Branch)						
Enhanced New Dawn Project from October 2007 to March 2010 in Yuen Long/Tin Shui Wai	1,845,000	—	—	—	425,911	1,419,089 <i>N</i>
71. Kowloon Women's Welfare Club						
Renovating, furnishing and equipping the Wong Cheung Kin Memorial Hostel for the Elderly at Shun Tin Estate	2,391,600	—	—	—	2,144,441	247,159

Lotteries Fund

STATEMENT OF APPROVED GRANTS—continued

Descriptions	Approved Grants HK\$	2013–14 Payments			Accumulated Payments to 31.3.2014 HK\$	Unspent Balances (N=Not required) HK\$
		Original Estimate HK\$	Amended Estimate HK\$	Actual HK\$		
72. Lam Tin Estate Kai Fong Welfare Association Limited						
Renovating a social centre for the elderly at Kwong Tin Estate, Lam Tin	2,375,600	1,000,000	1,000,000	—	2,045,446	330,154
73. Lok Sin Tong Benevolent Society, Kowloon		—	17,181,000			
(1) Replacing the existing 12-seater private light bus with a new 11-seater liquefied petroleum gas private light bus for Lok Sin Tong Chu Ting Cheong Home for the Aged	700,000			644,276	644,276	55,724 N
(2) Fitting out a residential care home for the elderly in Tai Kok Tsui	18,963,000			16,535,824	16,535,824	2,427,176
(3) Furnishing and equipping a residential care home for the elderly in Tai Kok Tsui	2,701,000			—	—	2,701,000
	22,364,000	—	17,181,000	17,180,100	17,180,100	5,183,900
74. Mary Rose School		—	—			
(1) Purchasing a 50-seater private bus for Mary Rose School	1,181,000			—	1,090,483	90,517 N
(2) Purchasing a 50-seater private bus for Mary Rose School	1,188,000			—	—	1,188,000
	2,369,000	—	—	—	1,090,483	1,278,517
75. Mental Health Association of Hong Kong		2,623,000	2,623,000			
(1) Constructing, furnishing and equipping a multi-service centre in Kwun Tong	32,800,600			—	29,495,188	3,305,412
(2) Enhanced New Dawn Project from October 2007 to March 2010 in Sha Tin/ Tai Po and North	1,845,000			(415,349)	1,090,651	754,349
(3) Replacing personal computers for non-governmental organisations in the social welfare sector	801,000			—	694,853	106,147 N
(4) Fitting out for setting up an Integrated Community Centre for Mental Wellness in Kwun Tong	3,175,000			1,020,913	2,938,625	236,375
	38,621,600	2,623,000	2,623,000	605,564	34,219,317	4,402,283
76. Methodist Church, Hong Kong		—	—			
(1) Furnishing and equipping a new 100-place residential care home for the elderly cum 30-place day care unit in Shek Kip Mei	3,847,000			—	—	3,847,000
(2) Fitting-out a new 100-place residential care home for the elderly cum 30-place day care unit in Shek Kip Mei	19,536,000			—	—	19,536,000
	23,383,000	—	—	—	—	23,383,000
77. Methodist Epworth Village Community Centre - Social Welfare (Methodist Church, Hong Kong)						
Replacing the existing 7-seater private car with a 13-seater private light bus for Epworth Integrated Home Care Service Team in Chai Wan	622,500	—	—	—	622,485	15 N
78. Modernisation Programme of Integrated Children and Youth Services Centres		1,063,000	2,485,000			
(1) Renovating, furnishing and equipping the HK Sheng Kung Hui Welfare Council - Shatin Children and Youth Integrated Services Centre	2,420,000			—	2,330,116	89,884 N
(2) Renovating, furnishing and equipping the Chinese Young Men's Christian Association of HK - Lam Tin Centre	2,420,000			—	2,200,848	219,152
(3) Renovating, furnishing and equipping the Neighbourhood Advice-Action Council - Tai Po North Integrated Children and Youth Services Centre	2,420,000			—	2,203,937	216,063
(4) Renovating, furnishing and equipping the Boys' and Girls' Clubs Association of HK - Shek Yam Children and Youth Integrated Services Centre	2,420,000			—	2,169,144	250,856

Lotteries Fund

STATEMENT OF APPROVED GRANTS—continued

Descriptions	Approved Grants	2013–14 Payments			Accumulated Payments to 31.3.2014	Unspent Balances (N=Not required)
	HK\$	Original Estimate HK\$	Amended Estimate HK\$	Actual HK\$	HK\$	HK\$
(5) Renovating, furnishing and equipping the Boys' and Girls' Clubs Association of HK - South Kwai Chung Children and Youth Integrated Services Centre	2,420,000			149,650	2,420,000	—
(6) Renovating, furnishing and equipping the Boys' and Girls' Clubs Association of HK - Tai Wai Children and Youth Integrated Services Centre	2,420,000			—	2,091,838	328,162
(7) Renovating, furnishing and equipping the Boys' and Girls' Clubs Association of HK - Tsz Wan Shan Children and Youth Integrated Services Centre	2,420,000			—	2,280,137	139,863
(8) Renovating, furnishing and equipping the Boys' and Girls' Clubs Association of HK - Wah Fu Children and Youth Integrated Services Centre	2,420,000			—	2,358,877	61,123 N
(9) Renovating, furnishing and equipping the Chinese Young Men's Christian Association of HK - Kwun Tong Centre	2,190,000			204,821	2,186,713	3,287
(10) Renovating, furnishing and equipping the HK Federation of Youth Groups - Farm Road Youth S.P.O.T.	2,420,000			—	2,136,937	283,063
(11) Renovating, furnishing and equipping the HK Federation of Youth Groups - Verbena Heights Youth S.P.O.T.	2,420,000			268,987	2,420,000	—
(12) Renovating, furnishing and equipping the HK Young Women's Christian Association - Lok Wah Integrated Social Service Centre	2,420,000			287,605	2,420,000	—
(13) Renovating, furnishing and equipping the Boys' and Girls' Clubs Association of HK - Tseung Kwan O Children and Youth Integrated Services Centre	2,420,000			202,385	2,335,792	84,208
(14) Renovating, furnishing and equipping the Boys' and Girls' Clubs Association of HK - Ma On Shan Children and Youth Integrated Services Centre	2,420,000			—	2,271,044	148,956
(15) Renovating, furnishing and equipping the Chinese Young Men's Christian Association of HK - Jordan Centre	2,420,000			—	2,130,949	289,051
(16) Renovating, furnishing and equipping the Chinese Young Men's Christian Association of HK - Tin Shui Wai Centre	2,420,000			—	2,419,751	249 N
(17) Renovating, furnishing and equipping the HK Federation of Youth Groups - Tin Yuet Youth S.P.O.T.	2,420,000			196,279	2,389,742	30,258 N
(18) Renovating, furnishing and equipping the Yan Oi Tong Tin Ka Ping Integrated Children and Youth Service Centre	2,500,000			—	1,882,560	617,440
	43,410,000	1,063,000	2,485,000	1,309,727	40,648,385	2,761,615
79. Modernisation Programme of Youth Service Units and Community Centres		10,731,000	23,099,000			
(1) Renovating, furnishing and equipping the American Baptist Mission Hong Kong Swatow Baptist Church Community Service Association Fung Tak Integrated Children and Youth Services	4,600,000			—	3,931,318	668,682
(2) Renovating, furnishing and equipping the Association of Baptists for World Evangelism (HK) Limited Shing Yan Christian Social Service Centre	4,600,000			414,313	4,587,674	12,326
(3) Renovating, furnishing and equipping the Baptist Oi Kwan Social Service Centre Wan Chai Integrated Children and Youth Services Centre	4,600,000			—	4,216,288	383,712
(4) Renovating, furnishing and equipping the Evangelical Lutheran Church Social Service North District Integrated Youth Service Centre	4,600,000			—	3,994,240	605,760
(5) Renovating, furnishing and equipping the Evangelical Lutheran Church Social Service Sheung Tak Integrated Youth Service Centre	4,600,000			562,223	4,600,000	—
(6) Renovating, furnishing and equipping the Evangelical Lutheran Church Social Service Tai Wo Integrated Youth Service Centre	4,550,000			—	3,833,730	716,270
(7) Renovating, furnishing and equipping the Evangelical Lutheran Church Social Service Tin Shui Wai Integrated Youth Service Centre	4,600,000			—	3,585,005	1,014,995

Lotteries Fund

STATEMENT OF APPROVED GRANTS—continued

Descriptions	Approved Grants HK\$	2013–14 Payments		Accumulated Payments to 31.3.2014 HK\$	Unspent Balances (N=Not required) HK\$
		Original Estimate HK\$	Amended Estimate HK\$		
(8) Renovating, furnishing and equipping the Evangelical Lutheran Church Social Service Tuen Mun Integrated Youth Service Centre	4,600,000			—	563,651
(9) Renovating, furnishing and equipping the Free Methodist Church of Hong Kong Tuen Mun Integrated Children and Youth Services Centre	4,600,000			220,556	53,268 N
(10) Renovating, furnishing and equipping the Hong Kong Christian Service Kwun Tong Integrated Children and Youth Service	4,600,000			—	717,765
(11) Renovating, furnishing and equipping the Hong Kong Christian Service Sham Shui Po Central Integrated Children and Youth Service	4,600,000			—	563,189
(12) Renovating, furnishing and equipping the Hong Kong Christian Service Sham Shui Po East Integrated Children and Youth Service	4,600,000			493,370	62,612
(13) Renovating, furnishing and equipping the Kwun Tong Methodist Social Service Ngau Tau Kok Integrated Services Centre	6,092,000			322,143	—
(14) Renovating, furnishing and equipping the Methodist Epworth Village Community Centre Epworth Integrated Youth Team	4,600,000			—	416,092
(15) Renovating, furnishing and equipping the Salvation Army Chai Wan Integrated Service for Young People	4,600,000			—	695,281
(16) Renovating, furnishing and equipping the Salvation Army Tuen Mun (East) Integrated Service for Young People	4,600,000			—	394,886
(17) Renovating, furnishing and equipping the Salvation Army Yau Ma Tei Integrated Service for Young People	4,600,000			—	713,261
(18) Renovating, furnishing and equipping the Salvation Army Tuen Mun Integrated Service for Young People	4,600,000			—	365,463
(19) Renovating, furnishing and equipping the Salvation Army Tai Po Integrated Service for Young People	4,160,000			—	307,486
(20) Renovating, furnishing and equipping the Youth Online-Steward Integrated Centre for Youth Development	4,600,000			—	391,463
(21) Renovating, furnishing and equipping the Yang Memorial Social Service Ho Man Tin Integrated Centre for Youth Development	4,600,000			—	261,950
(22) Renovating, furnishing and equipping the Yang Memorial Methodist Social Service Sha Tin Integrated Centre for Youth Development	4,600,000			—	1,178,081
(23) Renovating, furnishing and equipping the Zion Social Service Limited Zion Integrated Children and Youth Services Centre	4,600,000			469,373	571,327
(24) Renovating, furnishing and equipping the Boys' and Girls' Clubs Association of Hong Kong Kornhill Children Centre	1,890,000			—	187,862
(25) Renovating, furnishing and equipping Hans Andersen Club Limited Diana Boyd Wilson Centre	1,890,000			—	193,048
(26) Renovating, furnishing and equipping the Hong Kong Federation of Youth Groups Tai Po Lions Youth Space for Participation, Opportunities and Training	1,890,000			—	131,454
(27) Renovating, furnishing and equipping Tai Hang Residents' Welfare Association-Tai Hang Youth Centre	1,890,000			149,891	25,525 N
(28) Renovating, furnishing and equipping the Boys' and Girls' Clubs Association of Hong Kong Lok Man Children and Family Integrated Activity Centre	2,790,000			163,774	1,918
(29) Renovating, furnishing and equipping the Boys' and Girls' Clubs Association of Hong Kong Shaukeiwan Children Centre	2,790,000			—	367,774
(30) Renovating, furnishing and equipping the Hong Kong Lutheran Social Service-Lutheran Church-Hong Kong Synod Limited Sun Chui Children Centre	2,790,000			128,024	161,417

Lotteries Fund

STATEMENT OF APPROVED GRANTS—continued

Descriptions	Approved Grants	2013–14 Payments			Accumulated Payments to 31.3.2014	Unspent Balances (N=Not required)
	HK\$	Original Estimate HK\$	Amended Estimate HK\$	Actual HK\$	HK\$	HK\$
(31) Renovating, furnishing and equipping the Hong Kong Federation of Youth Groups Lung Hang Youth Space for Participation, Opportunities and Training	2,790,000			—	2,613,336	176,664
(32) Renovating, furnishing and equipping the Hong Kong Buddhist Association Children and Youth Centre	3,250,000			—	2,915,361	334,639
(33) Renovating, furnishing and equipping Stewards Limited Sha Kok Children and Youth Centre	3,250,000			—	2,945,461	304,539
(34) Renovating, furnishing and equipping the Hong Kong Federation of Youth Groups Felix Wong Youth Space for Participation, Opportunities and Training	3,250,000			—	243,392	3,006,608
(35) Renovating, furnishing and equipping the Caritas-Hong Kong and Youth Centre-Cheung Hong	4,140,000			—	4,098,916	41,084 <i>N</i>
(36) Renovating, furnishing and equipping the Chinese Young Men's Christian Association of Hong Kong Siu Sai Wan Centre	4,140,000			—	3,819,254	320,746
(37) Renovating, furnishing and equipping the Hong Kong Federation of Youth Groups Heng Fa Chuen Youth Space for Participation, Opportunities and Training	4,140,000			—	3,519,740	620,260
(38) Renovating, furnishing and equipping the Hong Kong Federation of Youth Groups Tin Shui Youth Space for Participation, Opportunities and Training	4,140,000			—	3,634,618	505,382
(39) Renovating, furnishing and equipping the Hong Kong Playground Association Hin Keng Children and Youth Centre cum Study Reading Room	4,140,000			—	3,898,666	241,334
(40) Renovating, furnishing and equipping the Hong Kong Playground Association Sai Tso Wan Children and Youth Centre cum Study Reading Room	4,140,000			—	3,903,768	236,232
(41) Renovating, furnishing and equipping the Salvation Army Chuk Yuen Children and Youth Centre	4,140,000			—	3,888,900	251,100
(42) Renovating, furnishing and equipping the Salvation Army Lung Hang Children and Youth Centre	4,140,000			—	3,687,605	452,395
(43) Renovating, furnishing and equipping the Salvation Army Tai Wo Hau Children and Youth Centre	4,140,000			—	3,735,042	404,958
(44) Renovating, furnishing and equipping the Yan Chai Hospital The 24th Term of Board Social Service Centre	4,140,000			—	3,510,622	629,378
(45) Renovating, furnishing and equipping Hong Kong Young Women's Christian Association Central/Western and Islands District Youth Outreaching Social Work Team	1,410,000			—	1,040,930	369,070
(46) Renovating, furnishing and equipping the Boys' and Girls' Clubs Association of Hong Kong Kwun Tong District Youth Outreaching Social Work Team	1,410,000			—	1,339,480	70,520
(47) Renovating, furnishing and equipping the Hong Kong Federation of Youth Groups Wong Tai Sin and Sai Kung District Youth Outreaching Social Work Team	1,410,000			—	136,540	1,273,460
(48) Renovating, furnishing and equipping the Hong Kong Playground Association Yau Tsim Mong District Youth Outreaching Social Work Team	1,410,000			120,542	1,343,421	66,579 <i>N</i>
(49) Renovating, furnishing and equipping Chinese Young Men's Christian Association of Hong Kong Kwai Tsing and Tsuen Wan Youth Outreaching Social Work Team	1,410,000			—	928,192	481,808
(50) Renovating, furnishing and equipping the Hong Kong Federation of Youth Groups Tsuen Wan and Kwai Ching District Youth Outreaching Social Work Team	1,410,000			—	1,122,461	287,539
(51) Renovating, furnishing and equipping Caritas-Hong Kong District Youth Outreaching Social Work Team in Tuen Mun	1,410,000			—	972,693	437,307
(52) Renovating, furnishing and equipping Hong Kong Christian Service Yuen Long District Youth Outreaching Social Work Team	1,410,000			—	1,131,460	278,540
(53) Renovating, furnishing and equipping ELCHK, Social Service Head Office Tin Shui Wai District Youth Outreaching Social Work Team	1,410,000			—	1,250,931	159,069

Lotteries Fund

STATEMENT OF APPROVED GRANTS—continued

Descriptions	Approved Grants	2013–14 Payments			Accumulated Payments to 31.3.2014	Unspent Balances (N=Not required)
	HK\$	Original Estimate HK\$	Amended Estimate HK\$	Actual HK\$	HK\$	HK\$
(54) Renovating, furnishing and equipping Chinese Young Men's Christian Association of Hong Kong Sha Tin Youth Outreaching Social Work Team	1,410,000			—	1,280,561	129,439
(55) Renovating, furnishing and equipping Hong Kong Children and Youth Services Tai Po District Youth Outreaching Social Work Team	1,410,000			83,253	1,410,000	—
(56) Renovating, furnishing and equipping ELCHK, Social Service Head Office North Point Youth Outreaching Social Work Team	1,410,000			—	1,252,520	157,480
(57) Renovating, furnishing and equipping the Boys' and Girls' Clubs Association of Hong Kong Sham Shui Po District Youth Outreaching Social Work Team	1,410,000			—	1,244,539	165,461
(58) Renovating, furnishing and equipping the Aberdeen Kai Fong Welfare Association Community Centre	11,816,000			709,885	11,816,000	—
(59) Renovating, furnishing and equipping the Caritas-Hong Kong Mok Cheung Sui Kun Community Centre	9,200,000			368,561	8,450,372	749,628
(60) Renovating, furnishing and equipping the Caritas-Hong Kong Caine Road Community Centre	11,816,000			126,559	10,024,143	1,791,857
(61) Renovating, furnishing and equipping the Caritas-Hong Kong Community Centre in Aberdeen	3,619,000			964,804	3,438,978	180,022
(62) Renovating, furnishing and equipping the Caritas-Hong Kong Ngau Tau Kok Community Centre	9,200,000			—	8,418,153	781,847
(63) Renovating, furnishing and equipping the Hong Kong Sheng Kung Hui Welfare Council Lady MacLehose Centre	9,200,000			—	8,510,685	689,315
(64) Renovating, furnishing and equipping the Hong Kong Lutheran Social Service Martha Boss Community Centre Group and Community Work Unit	9,200,000			—	4,190,930	5,009,070
(65) Renovating, furnishing and equipping the St. James' Settlement Wan Chai Community Centre	11,816,000			—	10,025,240	1,790,760
(66) Renovating, furnishing and equipping the Mong Kok Kai Fong Association Limited Chan Hing Social Service Centre (Integrated Community Service Division)	9,200,000			667,846	9,112,528	87,472
(67) Renovating, furnishing and equipping the Yuen Long Town Hall Management Committee Limited Community Centre	11,816,000			—	10,926,246	889,754
	291,885,000	10,731,000	23,099,000	5,965,117	256,787,166	35,097,834
80. Mongkok Kaifong Association Limited						
Renovating the Chan Hing Social Service Centre in Tai Kok Tsui	7,508,000	—	—	—	—	7,508,000
81. Mother Superior of the Congregation of Our Lady of Charity of the Good Shepherd of Angers at Hong Kong		2,000,000	2,000,000			
(1) Renovating the Choi Wan Hostel at Clear Water Bay Road, Kowloon	1,673,700			—	1,590,014	83,686
(2) Renovating the Marycove Centre and our Lady's Hostel	10,034,100			1,192,510	7,463,609	2,570,491
	11,707,800	2,000,000	2,000,000	1,192,510	9,053,623	2,654,177
82. Neighbourhood and Worker's Education Centre Limited		42,000	327,568			
(1) Fitting out a new mutual help child care centre at Kwai Fong Estate	1,196,600			285,568	1,196,580	20
(2) Fitting out a new mutual help child care centre in Cheung On Estate, Tsing Yi	782,000			—	735,291	46,709
	1,978,600	42,000	327,568	285,568	1,931,871	46,729
83. Neighbourhood Advice-Action Council		34,474,000	55,335,000			
(1) Renovating the Lower Wong Tai Sin Hostel	2,831,400			—	2,123,691	707,709
(2) Furnishing and equipping a community rehabilitation day centre at Wu King Estate, Tuen Mun	2,375,500			138,108	2,375,500	—

Lotteries Fund

STATEMENT OF APPROVED GRANTS—continued

Descriptions	Approved Grants HK\$	2013–14 Payments			Accumulated Payments to 31.3.2014 HK\$	Unspent Balances (N=Not required) HK\$
		Original Estimate HK\$	Amended Estimate HK\$	Actual HK\$		
(3) Fitting out a new supported hostel for mentally handicapped persons at Shun Lee Estate, Kwun Tong	2,177,100			—	1,991,419	185,681
(4) Fitting out a new integrated rehabilitation services centre at A Kung Kok Shan Road, Sha Tin	33,634,000			—	30,516,788	3,117,212
(5) Fitting out for reprovisioning the district youth outreaching social work team to Oi Tung Estate, Shau Kei Wan	1,355,400			—	1,184,821	170,579
(6) Fitting out a new special child care centre cum early education and training centre at Pok Hong Estate, Sha Tin	3,162,400			—	2,336,260	826,140
(7) Furnishing and equipping a new special child care centre cum early education and training centre at Pok Hong Estate, Sha Tin	790,100			6,012	790,033	67 N
(8) Fitting out a new district support centre for persons with disabilities in Wong Tai Sin	3,565,400			—	2,436,472	1,128,928
(9) Fitting out Tuen Mun Integrated Home Care Services Team in Po Tin Estate, Tuen Mun	1,063,000			—	972,791	90,209
(10) Meeting the operating cost to implement a 3-year pilot scheme on home care services for persons with severe disabilities in Tuen Mun	80,991,000			22,174,782	64,266,923	16,724,077
(11) Fitting out a new special child care centre cum early education and training centre in Wong Tai Sin	3,125,800			—	2,023,568	1,102,232
(12) Furnishing and equipping a new special child care centre cum early education and training centre in Wong Tai Sin	2,443,500			330,945	1,967,568	475,932
(13) Fitting out the additional premises of Tin Shui Neighbourhood Elderly Centre in Yuen Long	1,441,000			27,258	1,307,086	133,914
(14) Fitting out the office under the pilot scheme on home care services for persons with severe disabilities in Tuen Mun	1,356,000			—	1,031,832	324,168
(15) Renovating, furnishing and equipping Tai Hing Hostel in Tuen Mun	6,182,000			—	—	6,182,000
(16) Renovating Sun Chui Day Creche in Sha Tin	1,284,000			—	11,169	1,272,831
(17) Fitting out a new integrated rehabilitation services centre in Kwai Chung	38,666,000			2,913,505	33,736,100	4,929,900
(18) Furnishing and equipping a new integrated rehabilitation services centre in Kwai Chung	5,867,000			3,327,769	3,327,769	2,539,231
(19) Fitting out for setting up a new hostel for moderately mentally handicapped persons in Tuen Mun	20,269,000			16,997,714	16,997,714	3,271,286
(20) Furnishing and equipping for setting up a new hostel for moderately mentally handicapped persons in Tuen Mun	735,000			—	—	735,000
(21) Fitting out works for Tung Chung Youth Outreaching Team	1,319,000			—	—	1,319,000
	214,633,600	34,474,000	55,335,000	45,916,093	169,397,504	45,236,096
84. New Life Psychiatric Rehabilitation Association		4,425,000	16,352,000			
(1) Enhanced New Dawn Project from October 2007 to March 2010 in Wong Tai Sin/ Sai Kung/Tseung Kwan O	1,845,000			—	1,210,716	634,284 N
(2) Fitting out an integrated community centre for mental wellness at Tin Chak Estate, Tin Shui Wai	3,479,900			—	3,479,850	50 N
(3) Fitting out for setting up a supported hostel for ex-mentally ill persons at Shatin Hospital	14,054,000			9,772,855	12,405,955	1,648,045
(4) Furnishing and equipping for setting up a supported hostel for ex-mentally ill persons at Shatin Hospital	1,078,000			1,078,000	1,078,000	—
(5) Fitting out for setting up an Integrated Community Centre for Mental Wellness in Tung Chung	1,197,000			1,081,100	1,081,100	115,900
(6) Fitting out for setting up an Integrated Community Centre for Mental Wellness in Tuen Mun	3,016,000			2,673,175	2,673,175	342,825
(7) Undertaking fire safety/building safety rectification measures to meet the statutory requirements under the Residential Care Homes (Persons with Disabilities) Ordinance for Pok Hong Halfway House	633,000			—	—	633,000

Lotteries Fund

STATEMENT OF APPROVED GRANTS—continued

Descriptions	Approved Grants	2013–14 Payments			Accumulated Payments to 31.3.2014	Unspent Balances (N=Not required)
	HK\$	Original Estimate HK\$	Amended Estimate HK\$	Actual HK\$	HK\$	HK\$
(8) Undertaking fire safety/building safety rectification measures to meet the statutory requirements under the Residential Care Homes (Persons with Disabilities) Ordinance for Chuk Yuen Halfway House	658,000			—	—	658,000
(9) Fitting out for setting up an Integrated Community Centre for Mental Wellness in Sham Shui Po	4,127,000			35,700	35,700	4,091,300
(10) Renovating arising from water seepage for Tuen Mun Long Stay Care Home in Tuen Mun	7,466,000			—	—	7,466,000
(11) Fitting out works for setting up an Integrated Community Centre for Mental Wellness in Tuen Mun	2,687,000			—	—	2,687,000
(12) Undertaking fire safety/building safety rectification measures to meet the statutory requirements under the Residential Care Homes (Persons with Disabilities) Ordinance for Tin Yuet Halfway House	428,000			—	—	428,000
	40,668,900	4,425,000	16,352,000	14,640,830	21,964,496	18,704,404
85. Pentecostal Church of Hong Kong Limited		4,087,000	4,087,000			
(1) Renovating the Hong Lok Sheltered Workshop in Tuen Mun	2,976,200			—	2,667,006	309,194
(2) Renovating the Hong Lok Hostel in Tuen Mun	7,371,000			256,184	6,387,751	983,249
(3) Renovating, furnishing and equipping Nam Cheong Nursery School in Sham Shui Po	1,269,000			1,149,066	1,169,204	99,796
(4) Renovating Tai Wo Nursery School in Tai Po	1,616,000			838,401	870,958	745,042
(5) Renovating Tseung Kwan O Nursery School in Tseung Kwan O	737,000			630,949	645,523	91,477
	13,969,200	4,087,000	4,087,000	2,874,600	11,740,442	2,228,758
86. Po Leung Kuk		14,546,000	46,147,302			
(1) Meeting the cost of extension of Po Leung Kuk Y.C. Cheng Centre in Tai Wai	16,960,000			—	12,662,982	4,297,018
(2) Meeting the cost of slope remedial works for Po Leung Kuk Nursery at Leighton Road	662,100			—	417,164	244,936
(3) Fitting out a day rehabilitation service centre and a hostel for severely mentally handicapped at Tin Yan Estate	6,956,100			347,742	6,956,037	63
(4) Fitting out a residential care home for the elderly cum a day care unit at Kwai Shing East Estate, Kwai Chung	30,186,000			—	26,316,858	3,869,142
(5) Fitting out a residential care home for the elderly cum a day care unit at Tin Yan Estate, Tin Shui Wai, Yuen Long	9,841,300			—	8,895,800	945,500
(6) Renovating the Hin Keng Centre in Sha Tin	3,047,900			—	2,734,928	312,972
(7) Renovating the Chan Au Big Yan Home for the Elderly at Belcher's Street, Kennedy Town	998,000			—	900,428	97,572
(8) Enhanced New Dawn Project from October 2007 to March 2010 in Kwun Tong	1,845,000			(126,592)	1,379,408	465,592 N
(9) Fitting out works for the sub-base of Po Leung Kuk - Lau Chan Siu Po Neighbourhood Elderly Centre	1,807,100			—	1,483,312	323,788
(10) Fitting out works for Po Leung Kuk New Comers' Ward Annex in Sha Tin	2,851,100			292,560	2,851,035	65 N
(11) Fitting out a residential care home for the elderly at Ko Shing Street, Sheung Wan	9,987,800			—	9,182,700	805,100
(12) Fitting out a new day activity centre cum hostel for the severely mentally handicapped persons at Pokfulam Skills Centre	7,472,600			—	7,098,894	373,706
(13) Fitting out the additional premises of Mrs Chao King Lin Neighbourhood Elderly Centre at Cheung Fat Estate, Tsing Yi	1,685,000			—	1,563,700	121,300
(14) Fitting out a residential care home for the elderly at Kwai Chung Estate, Kwai Chung	15,995,100			—	14,419,100	1,576,000
(15) Fitting out a new refuge centre for women	4,920,700			—	4,586,990	333,710

Lotteries Fund

STATEMENT OF APPROVED GRANTS—continued

Descriptions	Approved Grants HK\$	2013–14 Payments			Accumulated Payments to 31.3.2014 HK\$	Unspent Balances (N=Not required) HK\$
		Original Estimate HK\$	Amended Estimate HK\$	Actual HK\$		
(16) Renovating Po Leung Kuk Y.C. Cheng Centre in Tai Wai	4,621,500			—	—	4,621,500
(17) Fitting out a new special child care centre cum early education and training centre at Chuk Yuen (South) Estate, Wong Tai Sin	4,200,300			—	3,730,650	469,650
(18) Fitting out a new integrated rehabilitation services centre at Kwai Shing Circuit, Kwai Chung	49,158,000			—	46,699,587	2,458,413
(19) Fitting out a new victim support programme in Tseung Kwan O	2,271,100			14,970	2,038,510	232,590
(20) Furnishing and equipping Siu Ming Memorial Home cum Care and Attention Unit in Kwun Tong	400,200			104,903	316,269	83,931
(21) Fitting out a 117-place residential care home for the elderly at Man Tung Road, Tung Chung	17,046,000			—	15,424,200	1,621,800
(22) Fitting out Tin Chak Hostel in relation to reprovisioning and in-situ expansion	11,087,000			—	10,532,346	554,654
(23) Fitting out the additional premises for a new integrated vocational rehabilitation services centre at Tin Chak Estate, Tin Shui Wai	4,543,000			—	3,799,825	743,175
(24) Renovating Siu Ming Memorial Home cum Care and Attention Unit in Kwun Tong	7,161,000			153,300	6,802,369	358,631
(25) Fitting out a new district support centre for persons with disabilities in Sha Tin District	3,358,000			—	3,023,250	334,750
(26) Furnishing and equipping a new district support centre for persons with disabilities in Sha Tin District	420,000			8,136	420,000	—
(27) Upgrading the provision of hospital beds in Chan Au Big Yan Home for the Elderly	609,000			—	539,513	69,487 N
(28) Upgrading the provision of hospital beds in Siu Ming Memorial Home cum Care and Attention Unit	765,000			—	677,261	87,739 N
(29) Fitting out a new 70-place day care centre for the elderly at Pak Tin Estate, Sham Shui Po	5,373,000			—	4,791,500	581,500
(30) Upgrading the provision of hospital beds in Po Leung Kuk Wong Chuk Hang Service for the Elderly - 1984 Care and Attention Home cum Madam Aw Tan Kyi Kyi Home for the Aged	506,000			—	447,681	58,319 N
(31) Renovating the Babies Section in Causeway Bay	1,576,000			—	—	1,576,000
(32) Fitting out a residential care home for the elderly cum day care unit at Cherry Street, Tai Kok Tsui	12,650,000			209,300	11,394,300	1,255,700
(33) Furnishing and equipping a residential care home for the elderly cum day care unit at Cherry Street, Tai Kok Tsui	2,075,000			41,372	2,075,000	—
(34) Replacing the existing 56-seater school bus with a 65-seater school bus for Yu Lee Mo Fan Memorial School	1,299,000			933,573	933,573	365,427
(35) Renovating Merry Court for the Senior in Ho Man Tin	2,276,000			—	—	2,276,000
(36) Replacing the existing 20-seater private bus with a new 29-seater diesel private bus for Mr. and Mrs. Chan Pak Keung Tsing Yi School	1,765,000			—	—	1,765,000
(37) Purchasing a new vehicle for Law's Foundation School	1,013,000			903,000	903,000	110,000
(38) Fitting out a 93-place residential care home for the elderly cum a 20-place day care unit in Sai Ying Pun	16,154,000			14,860,850	14,860,850	1,293,150
(39) Furnishing and equipping a 93-place residential care home for the elderly cum a 20-place day care unit in Sai Ying Pun	2,703,000			1,428,375	1,428,375	1,274,625
(40) Furnishing and equipping Eco-Home for the Senior and Sunny Green Day Care Centre for the Senior in Sham Shui Po	1,410,000			642,159	642,159	767,841
(41) Upgrading the provision of hospital beds in Po Leung Kuk Wong Chuk Hang Service for the Elderly - 1984 Care and Attention Home cum Madam Aw Tan Kyi Kyi Home for the Aged	455,000			—	—	455,000
(42) Furnishing and equipping for setting up a new day care centre for the elderly in Kwun Tong	3,054,000			—	—	3,054,000

Lotteries Fund

STATEMENT OF APPROVED GRANTS—continued

Descriptions	Approved Grants HK\$	2013–14 Payments			Accumulated Payments to 31.3.2014 HK\$	Unspent Balances (N=Not required) HK\$
		Original Estimate HK\$	Amended Estimate HK\$	Actual HK\$		
(43) Furnishing and equipping for setting up a new long stay care home in Tin Shui Wai	1,777,000			—	—	1,777,000
(44) Fitting out a new 75-place long stay care home in Tin Shui Wai	18,902,000			15,195,600	15,195,600	3,706,400
(45) Fitting out a new day care centre for the elderly in Kwun Tong	4,689,000			—	—	4,689,000
(46) Furnishing and equipping Comfort Court for the Senior cum Evergreen Day Care Centre for the Senior in Kwai Chung	2,326,000			—	—	2,326,000
(47) Renovating, furnishing and equipping Po Leung Kuk Fong Tam Yuen Leung Nursery in Tsuen Wan	409,000			—	—	409,000
(48) Fitting out for reprovisioning Fung Pak Lim Nursery	6,667,000			—	—	6,667,000
(49) Fitting out a new neighbourhood elderly centre at Kai Ching Estate, Kowloon City	4,445,000			—	—	4,445,000
(50) Fitting out a new integrated rehabilitation services centre in Sham Shui Po	23,199,000			—	—	23,199,000
(51) Furnishing and equipping a new integrated rehabilitation services centre in Shek Kip Mei Estate, Sham Shui Po	4,302,000			—	—	4,302,000
(52) Renovating, furnishing and equipping Wai Yin Nursery cum Kindergarten in Quarry Bay	1,519,000			—	—	1,519,000
(53) Renovating Comfort Court for the Senior cum Evergreen Day Care Centre for the Elderly in Kwai Chung	1,643,000			—	—	1,643,000
	343,042,900	14,546,000	46,147,302	35,009,248	248,125,154	94,917,746
87. Pok Oi Hospital		—	—			
(1) Upgrading the provision of hospital beds in Chan Feng Men Ling Care and Attention Home	1,040,000			—	—	1,040,000
(2) Upgrading the provision of hospital beds in Jockey Club Care and Attention Home	585,000			—	—	585,000
(3) Upgrading the provision of hospital beds in Tai Kwan Care and Attention Home	1,079,000			—	—	1,079,000
(4) Upgrading the provision of hospital beds in Yeung Chun Pui Care and Attention Home	897,000			—	—	897,000
(5) Upgrading the provision of hospital beds in Tuen Mun Nursing Home	1,872,000			—	—	1,872,000
(6) Meeting the cost of renovation for Yeung Chun Pui Care and Attention Home at 58 Sha Chau Lei Tsuen, Ha Tsuen, Yuen Long	13,439,000			—	—	13,439,000
(7) Furnishing and equipping for upgrading the provision of hospital beds for Yeung Chun Pui Care and Attention Home	897,000			—	—	897,000
	19,809,000	—	—	—	—	19,809,000
88. Richmond Fellowship of Hong Kong		2,894,000	2,894,000			
(1) Fitting out for setting up an Integrated Community Centre for Mental Wellness in Chai Wan	2,674,000			2,517,405	2,517,405	156,595
(2) Furnishing and equipping for setting up an Integrated Community Centre for Mental Wellness in Wong Tai Sin	452,000			—	—	452,000
(3) Fitting out an Integrated Community Centre for Mental Wellness in Wong Tai Sin	5,251,000			—	—	5,251,000
(4) Renovating Wan Tsui House in Chai Wan	2,190,000			—	—	2,190,000
(5) Fitting out the additional premises of Integrated Community Centre for Mental Wellness in Wong Tai Sin	538,000			—	—	538,000
	11,105,000	2,894,000	2,894,000	2,517,405	2,517,405	8,587,595
89. Salvation Army		1,415,000	7,929,547			
(1) Fitting out the Chuk Yuen Centre for Senior Citizens at Chuk Yuen Community Centre in Chuk Yuen (South) Estate	714,300			—	597,994	116,306

Lotteries Fund

STATEMENT OF APPROVED GRANTS—continued

Descriptions	Approved Grants HK\$	2013–14 Payments			Accumulated Payments to 31.3.2014 HK\$	Unspent Balances (N=Not required) HK\$
		Original Estimate HK\$	Amended Estimate HK\$	Actual HK\$		
(2) Enhanced New Dawn Project from October 2007 to March 2010 in Tuen Mun	1,845,000			—	1,506,000	339,000
(3) Renovating the Kwun Tong Integrated Home Care Service Team	783,000			—	530,758	252,242
(4) Fitting out the additional premises of Hoi Lam Centre for Senior Citizens at Hoi Fu Court, Mong Kok	427,400			—	376,033	51,367
(5) Renovating the Tin Ping Nursery School in Sheung Shui	661,700			61,553	661,700	—
(6) Fitting out for reprovisioning the Bradbury Day Care Centre for senior citizens in Tai Po	3,321,200			—	3,056,172	265,028
(7) Fitting out for reprovisioning the Tai Po Integrated Home Care Service Team in Tai Po	1,856,000			—	1,730,900	125,100
(8) Renovating Yue Wan Boy's Hostel at Yue Wan Estate, Chai Wan	1,736,800			697,567	1,535,679	201,121
(9) Fitting out for reprovisioning the Wah Fu Centre for senior citizens in Aberdeen	2,551,900			348,440	2,347,545	204,355
(10) Fitting out the additional premises of Nam Tai Centre for senior citizens in Sham Shui Po	1,465,200			138,373	1,427,381	37,819 N
(11) Undertaking fire safety/building safety rectification measures to meet the licensing requirements under the future legislation relating to residential care homes for persons with disabilities for Lai King Home	482,000			1,651	459,370	22,630 N
(12) Replacing the existing 16-seater private light bus with a new 16-seater diesel private light bus for Shaukeiwan Community Day Rehabilitation Service	784,000			780,724	780,724	3,276 N
(13) Upgrading the provision of hospital beds in Bradbury Home of Loving Kindness	881,000			683,040	683,040	197,960
(14) Upgrading the provision of hospital beds in Hoi Tai Residence for Senior Citizens	583,000			456,600	456,600	126,400
(15) Upgrading the provision of hospital beds in Kam Tin Residence for Senior Citizens	959,000			751,720	751,720	207,280
(16) Upgrading the provision of hospital beds in Nam Shan Residence for Senior Citizens	622,000			477,940	477,940	144,060
(17) Upgrading the provision of hospital beds in Po Lam Residence for Senior Citizens	674,000			516,360	516,360	157,640
(18) Upgrading the provision of hospital beds in Tak Tin Residence for Senior Citizens	609,000			449,160	449,160	159,840
(19) Replacing the two existing private light buses with two new 14-seater liquefied petroleum gas private light buses for Chuk Yuen Day Care Centre for Senior Citizens	1,489,000			1,486,720	1,486,720	2,280 N
(20) Renovating Cheung Hong Community Day Rehabilitation and Residential Service in Tsing Yi	6,292,000			—	—	6,292,000
(21) Upgrading the provision of hospital beds in Bradbury Home of Loving Kindness	533,000			—	—	533,000
(22) Upgrading the provision of hospital beds in Hoi Tai Residence for Senior Citizens	494,000			—	—	494,000
(23) Upgrading the provision of hospital beds in Kam Tin Residence for Senior Citizens	715,000			—	—	715,000
(24) Renovating Salvation Army Pak Tin Nursery School and Creche in Sham Shui Po	731,000			—	—	731,000
(25) Replacing the existing vehicle for Kwun Tong Integrated Home Care Service Team	772,000			—	—	772,000
(26) Replacing the existing vehicle for Kam Tin Residence for Senior Citizens	759,000			—	—	759,000
(27) Renovating Kam Tin Residence for Senior Citizens in Yuen Long	1,231,000			—	—	1,231,000
(28) Renovating, furnishing and equipping Nam Shan Residence for Senior Citizens in Sham Shui Po	16,864,000			—	—	16,864,000

Lotteries Fund

STATEMENT OF APPROVED GRANTS—continued

Descriptions	Approved Grants HK\$	2013–14 Payments			Accumulated Payments to 31.3.2014 HK\$	Unspent Balances (N=Not required) HK\$
		Original Estimate HK\$	Amended Estimate HK\$	Actual HK\$		
(29) Replacing the existing 15-seater diesel private light bus with a new 14-seater liquefied petroleum gas private light bus for Lai King Home	765,000			—	—	765,000
	51,601,500	1,415,000	7,929,547	6,849,848	19,831,796	31,769,704
90. Samaritan Befrienders Hong Kong		—	—			
(1) Fitting out for reprovisioning the Suicide Crisis Intervention Centre in Sham Shui Po	3,395,000			—	—	3,395,000
(2) Furnishing and equipping for reprovisioning the Suicide Crisis Intervention Centre in Sham Shui Po	434,000			—	—	434,000
	3,829,000	—	—	—	—	3,829,000
91. Scout Association of Hong Kong						
Redevelopment of the Scout Association of Hong Kong Hong Kong Island Regional Headquarters in Wan Chai	166,329,000	—	—	—	—	166,329,000
92. Self Help Group for the Brain Damaged						
Fitting out for reprovisioning the activity centre to Sham Shui Po	2,003,000	—	—	—	—	2,003,000
93. S.K.H. St. Simon's Social Services						
Renovating, furnishing and equipping Hong Kong Sheng Kung Hui St. Simon's Tai Hing Nursery School in Tuen Mun	873,000	390,000	785,000	47,040	47,040	825,960
94. Sik Sik Yuen		32,000	3,450,000			
(1) Renovating the Ho Kin District Community Centre for Senior Citizens at Nam Cheong Estate, Sham Shui Po	2,419,800			—	—	2,419,800 N
(2) Fitting out for reprovisioning the Ho Tai Neighbourhood Centre for senior citizens to Kwong Yuen Estate in Sha Tin	2,722,900			—	2,250,104	472,796
(3) Installation of air-conditioning for Ho On Home for the Elderly in Kwai Chung	713,000			607,400	607,400	105,600
(4) Upgrading the provision of hospital beds in Ho Cheung Home for the Elderly	752,000			626,400	626,400	125,600 N
(5) Upgrading the provision of hospital beds in Ho Yam Care and Attention Home for the Elderly	1,711,000			1,425,600	1,425,600	285,400 N
(6) Upgrading the provision of hospital beds in Ho On Home for the Elderly	480,000			399,600	399,600	80,400 N
(7) Upgrading the provision of hospital beds in Ho Yam Care and Attention Home for the Elderly	650,000			—	—	650,000
	9,448,700	32,000	3,450,000	3,059,000	5,309,104	4,139,596
95. Social Welfare Department		391,665,000	366,814,000			
(1) Organising a training package for management board members of non-government organisations receiving subventions from Social Welfare Department	460,000			—	313,039	146,961
(2) Disbursing of special one-off grant to 124 non-government organisations after the tide-over grant period	912,448,600			4,890,791	903,822,505	8,626,095
(3) Providing contingencies for a multi-purpose crisis intervention and support centre on a 3-year basis	1,005,400			—	—	1,005,400
(4) Providing additional resources to non-governmental organisations for employing paramedical staff or hiring paramedical services for three years from 2009-10 to 2011-12	278,000,000			(3,574,554)	273,657,246	4,342,754
(5) Disbursing special one-off block grant to subvented non-governmental organisations for carrying out minor works in 2009-10	79,518,000			(698)	76,748,996	2,769,004
(6) Providing additional resources for small non-governmental organisations for strengthening administrative and professional support	30,000,000			—	23,557,200	6,442,800

Lotteries Fund

STATEMENT OF APPROVED GRANTS—continued

Descriptions	Approved Grants HK\$	2013–14 Payments			Accumulated Payments to 31.3.2014 HK\$	Unspent Balances (N=Not required) HK\$
		Original Estimate HK\$	Amended Estimate HK\$	Actual HK\$		
(7) Setting up the Social Welfare Development Fund	330,000,000			—	262,894,251	67,105,749
(8) Implementing a pilot bought place scheme for private residential care homes for persons with disabilities	70,187,400			17,885,448	39,042,257	31,145,143
(9) Disbursement to private residential care homes for persons with disabilities to implement a Financial Assistance Scheme	39,000,000			—	—	39,000,000
(10) Fitting out for setting up a new special child care centre cum early education and training centre in Shan King Estate, Tuen Mun	3,639,000			—	—	3,639,000
(11) Furnishing and equipping for setting up a new special child care centre cum early education and training centre in Shan King Estate, Tuen Mun	943,000			—	—	943,000
(12) Furnishing and equipping for setting up a new 70-place hostel for moderately mentally handicapped persons in Tuen Mun	735,000			—	—	735,000 N
(13) Fitting out a new 70-place hostel for moderately mentally handicapped persons in Tuen Mun	20,269,000			—	—	20,269,000 N
(14) Disbursement to 77 non-governmental organisations for employing paramedical staff or hiring paramedic services from 2012-13 to 2014-15	344,000,000			114,431,400	228,862,800	115,137,200
(15) Fitting out works for setting up a new early education and training centre in Kwun Tong	3,004,000			—	—	3,004,000
(16) Furnishing and equipping for setting up a new early education and training centre in Kwun Tong	889,000			—	—	889,000
(17) Furnishing and equipping for setting up a new long stay care home in Tin Shui Wai	1,777,000			—	—	1,777,000 N
(18) Fitting out a new long stay care home in Tin Shui Wai	18,902,000			—	—	18,902,000 N
(19) Furnishing and equipping a new 100-place residential care home for the elderly cum 30-place day care unit in Tai Wai	3,847,000			—	—	3,847,000 N
(20) Furnishing and equipping a new 100-place residential care home for the elderly cum 30-place day care unit in Shek Kip Mei	3,847,000			—	—	3,847,000 N
(21) Furnishing and equipping a new 60-place day care centre for the elderly in Kwai Tsing	3,108,000			—	—	3,108,000 N
(22) Fitting out for setting up a new early education and training centre in Kwai Chung	3,029,000			—	—	3,029,000
(23) Furnishing and equipping for setting up a new early education and training centre in Kwai Chung	889,000			—	—	889,000
(24) Furnishing and equipping a new special child care centre cum early education and training centre in Tai Po	2,158,000			—	—	2,158,000
(25) Furnishing and equipping for a new 52-place day care centres for the elderly in Kwun Tong	3,054,000			—	—	3,054,000 N
(26) Furnishing and equipping for a new 45-place day care centres for the elderly in Sha Tin	2,177,000			—	—	2,177,000 N
(27) Constructing an Integrated Family Service Centre, a Day Care Centre for the Elderly, a District Support Centre for Persons with Disabilities and a Special Child Care Centre cum Early Education and Training Centre in the Comprehensive Development Area at ex-North Point Estate	58,090,000			—	—	58,090,000
(28) Fitting out works for setting up a new special child care centre cum early education and training centre in Tai Po	5,300,000			—	—	5,300,000
(29) Fitting out for setting up a new day care centre for the elderly in Kwai Tsing	4,909,000			—	—	4,909,000 N
(30) Fitting out a new residential care home for the elderly cum day care unit in Tai Wai	20,464,000			—	—	20,464,000 N
(31) Fitting out a new residential care home for the elderly cum day care unit in Shek Kip Mei	19,536,000			—	—	19,536,000 N
(32) Subsidy on the voucher value for implementing the first phase of the Pilot Scheme on Community Care Service Voucher for the Elderly	278,000,000			3,088,650	3,088,650	274,911,350

Lotteries Fund

STATEMENT OF APPROVED GRANTS—continued

Descriptions	Approved Grants	2013–14 Payments			Accumulated Payments to 31.3.2014	Unspent Balances (N=Not required)
	HK\$	Original Estimate HK\$	Amended Estimate HK\$	Actual HK\$	HK\$	HK\$
(33) Seed money to eligible recognised service providers for purchase of vehicle and/or furniture and equipment under the Pilot Scheme on Community Care Service Voucher for the Elderly	102,000,000			984,969	984,969	101,015,031
(34) Launching Phase 2 of the Social Welfare Development Fund	330,000,000			51,661,760	51,661,760	278,338,240
(35) Fitting out a new day care centre for the elderly in Kwun Tong	4,689,000			—	—	4,689,000 N
(36) Fitting out a new day care centre for the elderly in Sha Tin	4,298,000			—	—	4,298,000 N
(37) Constructing a 60-place day care centre for the elderly in a Private Residential Development in Tuen Mun	16,550,000			—	—	16,550,000
(38) Fitting out a new integrated rehabilitation services centre in Shek Kip Mei Estate, Sham Shui Po	23,199,000			—	—	23,199,000 N
(39) Furnishing and equipping a new integrated rehabilitation services centre in Shek Kip Mei Estate, Sham Shui Po	4,302,000			—	—	4,302,000 N
(40) Fitting out a new day activity centre cum hostel for severely mentally handicapped persons in Tin Ching Estate, Tin Shui Wai	13,993,000			—	—	13,993,000 N
(41) Furnishing and equipping a new day activity centre cum hostel for severely mentally handicapped persons in Tin Ching Estate, Tin Shui Wai	3,187,000			—	—	3,187,000 N
(42) Carrying out a Technical Feasibility Study for the redevelopment of ex-Kai Nang Sheltered Workshop and Hostel into an Integrated Rehabilitation Services Complex in Kwun Tong	3,193,000			488,127	488,127	2,704,873
(43) Constructing a new contract residential care home for the elderly with a day care unit and a new day care centre for the elderly in Long Ping, Yuen Long	72,720,000			—	—	72,720,000
(44) Meeting the cost of technical feasibility study for the redevelopment of ex-Siu Lam Hospital into an integrated rehabilitation services complex	7,956,000			3,140,777	3,140,777	4,815,223
(45) Furnishing and equipping for setting up a new residential care home for the elderly in Tai Kok Tsui	3,938,000			—	—	3,938,000
(46) Fitting out a new neighbourhood elderly centre at Kai Ching Estate, Kowloon City	4,445,000			—	—	4,445,000 N
(47) Fitting out a new residential care home for the elderly in Tai Kok Tsui	26,130,000			—	—	26,130,000
(48) Fitting out a new early education and training centre in Sha Tin	3,541,000			—	—	3,541,000
(49) Furnishing and equipping for setting up a new early education and training centre in Sha Tin	889,000			—	—	889,000
(50) Furnishing and equipping a new residential care home for the elderly in Sham Shui Po	3,938,000			—	—	3,938,000
(51) Fitting out a new residential care home for the elderly in Sham Shui Po	27,424,000			—	—	27,424,000
(52) Meeting the construction costs of rehabilitation and elderly services facilities in the development project of the Urban Renewal Authority at Hai Tan Street, Kweilin Street & Pei Ho Street, Sham Shui Po	40,650,000			—	—	40,650,000
(53) Meeting the construction costs of a new contract residential care home for the elderly and a new day care centre for the elderly at the site of ex-Kwong Choi Market, Tuen Mun	69,920,000			—	—	69,920,000
(54) Purchasing essential equipment and vehicle for Central & Western Community and Home Care Service for the Elderly Team	1,218,000			—	—	1,218,000
(55) Purchasing essential equipment and vehicle for Wan Chai Community and Home Care Service for the Elderly Team	1,197,000			—	—	1,197,000
(56) Purchasing essential equipment and vehicle, and miscellaneous expenses arising from transfer of vehicle from the existing Enhanced Home and Community Care Services Team to Sham Shui Po Community and Home Care Service for the Elderly Team	1,422,000			—	—	1,422,000

Lotteries Fund

STATEMENT OF APPROVED GRANTS—continued

Descriptions	Approved Grants	2013–14 Payments			Accumulated Payments to 31.3.2014	Unspent Balances (N=Not required)
	HK\$	Original Estimate HK\$	Amended Estimate HK\$	Actual HK\$	HK\$	HK\$
(57) Purchasing essential equipment and vehicle, and miscellaneous expenses arising from transfer of vehicle from the existing Enhanced Home and Community Care Services Team to Kowloon City Community and Home Care Service for the Elderly Team	1,422,000			—	—	1,422,000
(58) Purchasing essential equipment and vehicle for Wong Tai Sin (C) Community and Home Care Service for the Elderly Team	1,327,000			—	—	1,327,000
(59) Purchasing essential equipment and miscellaneous expenses arising from transfer of vehicle from the existing Enhanced Home and Community Care Services Team to Sai Kung Community and Home Care Service for the Elderly Team	440,000			—	—	440,000
(60) Purchasing essential equipment and vehicle, and miscellaneous expenses arising from transfer of vehicle from the existing Enhanced Home and Community Care Services Team to Sha Tin Community and Home Care Service for the Elderly Team	1,400,000			—	—	1,400,000
(61) Purchasing essential equipment and vehicle for Kwai Tsing (B) Community and Home Care Service for the Elderly Team	1,262,000			—	—	1,262,000
(62) Purchasing essential equipment and miscellaneous expenses arising from transfer of vehicle from the existing Enhanced Home and Community Care Services Team to Kwun Tong Cluster Community and Home Care Service for the Elderly Team	462,000			—	—	462,000
(63) Furnishing and equipping a new 100-place residential care home for the elderly in Sham Shui Po	3,719,000			—	—	3,719,000
(64) Furnishing and equipping a new day activity centre cum hostel for persons with severely mentally handicapped and supported hostel for mentally handicapped in Sham Shui Po	2,142,000			—	—	2,142,000
	3,326,158,400	391,665,000	366,814,000	192,996,670	1,868,262,577	1,457,895,823
96. Society for the Aid and Rehabilitation of Drug Abusers		9,829,000	9,829,000			
(1) Reservoirs upgrading works for Shek Kwu Chau Treatment and Rehabilitation Centre in Shek Kwu Chau	30,504,500			7,747,301	24,711,140	5,793,360
(2) Renovating the Shek Kwu Chau Treatment and Rehabilitation Centre	8,673,200			16,982	8,114,477	558,723
	39,177,700	9,829,000	9,829,000	7,764,283	32,825,617	6,352,083
97. Society of Boy's Centres						
Replacing a vehicle for Chak Yan Centre School	588,000	—	—	—	—	588,000
98. Society of Rehabilitation and Crime Prevention, Hong Kong		5,386,000	7,214,000			
(1) Renovating the Sunrise House in Tin Shui Wai	2,176,300			1,742,616	1,742,616	433,684
(2) Renovating the Rotary (Lok Fu) Hostel in Lok Fu	1,039,000			—	—	1,039,000
(3) Fitting out for setting up an Integrated Community Centre for Mental Wellness in a Joint-user Complex at Tin Shui Wai Area 109	4,237,000			3,724,676	3,724,676	512,324
(4) Renovating the Head Office in Wan Chai	1,980,000			17,835	17,835	1,962,165
	9,432,300	5,386,000	7,214,000	5,485,127	5,485,127	3,947,173
99. St. James' Settlement		3,400,000	3,400,000			
(1) Renovating, improving the settings on the ground floor of the multi-service community centre in Wan Chai	777,000			—	724,973	52,027
(2) Renovating the main base of St. James' Settlement Wanchai District Elderly Community Centre	2,705,600			—	2,564,687	140,913 N
(3) Fitting out a new 40-place day care centre for the elderly in Chai Wan	2,527,500			474,565	2,527,470	30

Lotteries Fund

STATEMENT OF APPROVED GRANTS—continued

Descriptions	Approved Grants	2013–14 Payments			Accumulated Payments to 31.3.2014	Unspent Balances (N=Not required)
	HK\$	Original Estimate HK\$	Amended Estimate HK\$	Actual HK\$	HK\$	HK\$
(4) Renovating the St. James' Settlement Multi-Service Community Centre in Wan Chai	2,926,500			661,682	2,300,066	626,434
(5) Fitting out for reprovisioning the St. James' Project Care Neighbourhood Elderly Centre to Fuk Loi Estate, Tsuen Wan	2,808,300			—	2,575,162	233,138
(6) Fitting out St. James' Settlement Wan Chai Integrated Family Service Centre	4,212,500			—	3,917,800	294,700
(7) Fitting out a new district support centre for persons with disabilities in Wan Chai	3,150,200			—	2,814,877	335,323
(8) Furnishing and equipping a new district support centre for persons with disabilities in Wan Chai	420,000			372,546	372,546	47,454 N
(9) Renovating Li Chit Street Single Persons Hostel in Wan Chai	2,311,000			—	—	2,311,000
(10) Replacing the existing 12-seater private light bus with a new 14-seater liquefied petroleum gas private light bus for Wan Chai Day Care Centre for the Elderly	739,000			738,610	738,610	390 N
(11) Renovating, furnishing and equipping Scenic Resort Nursing Home in Shau Kei Wan	7,968,000			—	—	7,968,000
(12) Replacing the existing 7-seater diesel private car with a new 5-seater diesel light goods vehicle for Supported Employment	463,000			—	—	463,000
	31,008,600	3,400,000	3,400,000	2,247,403	18,536,191	12,472,409
100. Stewards Limited						
Undertaking fire safety/building safety rectification measures to meet the statutory requirements under the Residential Care Homes (Persons with Disabilities) Ordinance for Yiu On Halfway House	1,342,000	—	—	—	—	1,342,000
101. Suicide Prevention Services Limited		87,000	240,130			
(1) Fitting out the Suicide Prevention Services at Ping Shek Estate, Kowloon	1,587,300			—	1,358,500	228,800
(2) Upgrading the hotline system for Suicide Prevention Services at Ping Shek Estate, Kowloon	473,500			—	320,370	153,130
	2,060,800	87,000	240,130	—	1,678,870	381,930
102. Superiores of the Sisters of the Precious Blood						
Carrying out drainage works for Precious Blood Children's Village in Fanling	3,174,600	—	—	—	2,977,639	196,961
103. SAHK		10,655,000	18,803,000			
(1) Renovating the On Ting Hostel in Tuen Mun	5,246,600			218,551	5,196,298	50,302 N
(2) Renovating the Lok Wah Hostel in Ngau Tau Kok	4,631,200			135,994	4,520,498	110,702 N
(3) Renovating the Lung Hang Pre-school Centre in Shatin	1,930,300			—	1,729,507	200,793
(4) Fitting out a new integrated rehabilitation services centre at Sheung Shing Street, Ho Man Tin	29,854,000			—	23,148,380	6,705,620
(5) Renovating Apleichau Pre-School Centre in Aberdeen	1,036,000			17,080	17,080	1,018,920
(6) Renovating Lung Tai Hostel in Wong Tai Sin	1,275,000			22,330	22,330	1,252,670
(7) Renovating Bradbury Tak Tin Workshop in Lam Tin	1,325,000			—	—	1,325,000
(8) Fitting out Pak Tin Special Child Care Centre cum Early Education and Training Centre in Sham Shui Po	6,936,000			127,903	5,834,477	1,101,523
(9) Furnishing and equipping Pak Tin Special Child Care Centre cum Early Education and Training Centre in Sham Shui Po	2,956,000			2,079,862	2,337,973	618,027
(10) Replacing two existing private buses with two new 31-seater private buses for B M Kotewall Memorial School	4,052,000			3,732,302	3,732,302	319,698

Lotteries Fund

STATEMENT OF APPROVED GRANTS—continued

Descriptions	Approved Grants	2013–14 Payments			Accumulated Payments to 31.3.2014	Unspent Balances (N=Not required)
	HK\$	Original Estimate HK\$	Amended Estimate HK\$	Actual HK\$	HK\$	HK\$
(11) Replacing the existing 12-seater private light bus with a new 15-seater diesel private light bus for On Ting Hostel	818,000			817,422	817,422	578 N
(12) Replacing the existing 16-seater private light bus with a new 15-seater diesel private light bus for Jockey Club Elaine Field School	822,000			—	—	822,000
(13) Replacing two private buses with a new 22-seater private bus and a new 31-seater private bus for Ko Fook Iu Memorial School	3,505,000			2,807,446	2,807,446	697,554
(14) Replacing an existing vehicle for SAHK On Ting Workshop	1,975,000			—	—	1,975,000
(15) Renovating Jockey Club Marion Fang Conductive Learning Centre (Pre-School Unit) in Wong Tai Sin	1,873,000			—	—	1,873,000
	68,235,100	10,655,000	18,803,000	9,958,890	50,163,713	18,071,387
104. Tsung Tsin Mission of Hong Kong Social Service Company Limited						
Renovating Head Office in Kowloon Bay	1,774,000	—	—	—	—	1,774,000
105. Tung Lum Nien Fah Tong Limited		4,670,000	4,670,000			
(1) Upgrading the provision of hospital beds in Tung Lum Buddhist Aged Home	635,000			—	—	635,000
(2) Sewerage improvement works for Tung Lum Buddhist Aged Home in Tsuen Wan	2,698,000			1,099,208	1,129,208	1,568,792
(3) Renovating, furnishing and equipping Tung Lum Buddhist Aged Home in Tsuen Wan	7,577,000			—	—	7,577,000
	10,910,000	4,670,000	4,670,000	1,099,208	1,129,208	9,780,792
106. Tung Sin Tan, Home for the Aged						
Renovating, furnishing and equipping Tung Sin Tan Home for the Aged	5,411,400	—	—	—	4,519,632	891,768
107. Tung Wah Group of Hospitals		185,878,000	66,595,000			
(1) Constructing, furnishing and equipping the Wu Chiang Wai Fong Home	57,284,000			—	49,139,017	8,144,983
(2) Constructing, furnishing and equipping the Wong Cho Tong Social Service Building at Sheung Shing Street, Ho Man Tin	118,888,000			—	97,661,254	21,226,746
(3) Repairing works and stability study of the slopes and retaining wall for David Trench Home for the Aged	475,000			—	303,161	171,839
(4) Renovating the Tai Tung Pui Care and Attention Home	5,134,000			—	4,856,562	277,438
(5) Renovating the Mok Law Sui Wah Integrated Vocational Rehabilitation Centre	3,269,600			—	2,813,511	456,089
(6) Setting up and operating a multi-purpose crisis intervention and support centre on a 3-year basis	20,108,000			—	18,555,790	1,552,210
(7) Upgrading works for 3 slopes of Pao Siu Loong and Wu York Yu Care and Attention Home, Tai Po	5,217,500			—	3,826,981	1,390,519
(8) Renovating, furnishing and equipping the Zonta Club of Kowloon Nursery School in Tin Shui Wai	628,700			—	398,480	230,220
(9) Fitting out the additional premises of Fong Shiu Yee Neighbourhood Elderly Centre at Sau Mau Ping Estate	1,086,700			434,488	1,019,992	66,708
(10) Fitting out a new 60-place day care centre for the elderly at Sun Tin Wai Estate, Sha Tin	3,309,000			—	3,257,810	51,190
(11) Fitting out the additional premises of Wu Ki Lim Neighbourhood Elderly Centre in Shau Kei Wan	1,086,700			90,648	1,033,900	52,800 N
(12) Fitting out an additional premises of Wilson T S Wang District Community Centre in Sha Tin	769,300			—	685,013	84,287

Lotteries Fund

STATEMENT OF APPROVED GRANTS—continued

Descriptions	Approved Grants	2013–14 Payments			Accumulated Payments to 31.3.2014	Unspent Balances (N=Not required)
	HK\$	Original Estimate HK\$	Amended Estimate HK\$	Actual HK\$	HK\$	HK\$
(13) Installing air-conditioning system for Ho Tung Home for the Elderly for conversion of self-care and home for the aged places into long-term care places, Kowloon	587,100			—	291,291	295,809
(14) Fitting out additional premises of Wong Cho Tong District Elderly Community Centre in Ho Man Tin	1,135,600			—	1,067,913	67,687
(15) Installation of air-conditioning system for Mok Wong Fung Yee Home for the Elderly in Sha Tin	1,051,500			—	451,105	600,395
(16) Installation of air-conditioning system for Lee See Ping Home for the Elderly in Chai Wan	1,041,100			—	970,504	70,596
(17) Carrying out replacement works of the air-conditioning system for Jockey Club Rehabilitation Complex in Aberdeen	30,917,200			—	10,942,737	19,974,463
(18) Renovating Women's Welfare Club Western District, Hong Kong Residential Care Home for the Elderly in Shau Kei Wan	1,887,300			—	43,750	1,843,550
(19) Renovating, furnishing and equipping the Jockey Club Rehabilitation Complex in Aberdeen	42,342,200			2,800,210	31,585,166	10,757,034
(20) Fitting out for reprovisioning the main base of Jockey Club Shatin Integrated Services Centre to Jubilee Court Shopping Centre in Sha Tin	2,674,000			—	2,380,062	293,938
(21) Renovating, furnishing and equipping Ho Tung Home for the Elderly in Diamond Hill	3,540,500			—	—	3,540,500
(22) Renovating, furnishing and equipping Mok Wong Fung Yee Home for the Elderly in Sha Tin	7,034,000			—	151,351	6,882,649
(23) Meeting the operating cost to implement a 3-year pilot scheme on home care services for frail elders in Kowloon City, Yau Tsim Mong and Sham Shui Po	23,760,000			5,900,000	18,150,000	5,610,000
(24) Redevelopment of the Tung Wah Group of Hospitals David Trench Home for the Elderly in Aberdeen	298,590,000			—	—	298,590,000
(25) Renovating, furnishing and equipping for converting home for the aged places into long term care places in Hui Lai Kuen Home for the Elderly in Tai Yuen Estate, Tai Po	7,221,000			—	30,000	7,191,000
(26) Renovating, furnishing and equipping Wu York Yu Care and Attention Home in Tai Po	14,680,000			—	30,000	14,650,000
(27) Renovating, furnishing and equipping Fong Wong Woon Tei Home for the Elderly in Fanling	8,753,000			114,500	144,500	8,608,500
(28) Installation of air-conditioning for Y.C. Liang Memorial Home for the Elderly in Tin Shui Wai	795,000			689,201	715,974	79,026
(29) Upgrading the provision of hospital beds in Fong Shu Chuen Care and Attention Home	830,000			544,000	544,000	286,000 N
(30) Upgrading the provision of hospital beds in Hui Mok Tak Yu Care and Attention Home	648,000			425,000	425,000	223,000 N
(31) Upgrading the provision of hospital beds in Ma Cheng Shuk Ying Home for the Elderly	778,000			510,000	510,000	268,000 N
(32) Upgrading the provision of hospital beds in Tai Tung Pui Care and Attention Home	894,000			586,500	586,500	307,500 N
(33) Purchasing essential equipment for Enhanced Home and Community Care Services Teams in Eastern, Kowloon City and Yau Tsim Mong/Kowloon City Cluster	667,000			—	185,943	481,057
(34) Replacing a passenger lift for Pao Siu Loong Care and Attention Home in Tai Po	2,227,000			—	—	2,227,000
(35) Fitting out a new 70-place day care centre for the elderly at Chak On Estate, Sham Shui Po	5,422,000			381,417	4,827,900	594,100
(36) Furnishing and equipping a new 70-place day care centre for the elderly at Chak On Estate, Sham Shui Po	3,153,000			2,478,913	3,145,323	7,677
(37) Upgrading the provision of hospital beds in Ho Tung Home for the Elderly	415,000			272,000	272,000	143,000 N
(38) Upgrading the provision of hospital beds in Po Chung Chuen Ying Home for the Elderly	454,000			297,500	297,500	156,500 N

Lotteries Fund

STATEMENT OF APPROVED GRANTS—continued

Descriptions	Approved Grants HK\$	2013–14 Payments		Accumulated Payments to 31.3.2014 HK\$	Unspent Balances (N=Not required) HK\$
		Original Estimate HK\$	Amended Estimate HK\$		
(39) Fitting out a residential care home for the elderly at Willow Street, Tai Kok Tsui	15,165,000			—	1,663,600
(40) Furnishing and equipping a residential care home for the elderly at Willow Street, Tai Kok Tsui	2,313,000			—	1,310,279
(41) Carrying out tree removal and maintenance works for Shuen Wan Complex for the Elderly in Tai Po	505,000			—	505,000
(42) Furnishing and equipping CROSS Centre - Central Western, Southern and Islands Office in Sheung Wan	437,000			—	437,000
(43) Fitting out Tin Ching Special Child Care Centre cum Early Education and Training Centre in Tin Shui Wai	2,772,000			49,500	211,750
(44) Furnishing and equipping Tin Ching Special Child Care Centre cum Early Education and Training Centre in Tin Shui Wai	657,000			205,209	—
(45) Furnishing and equipping Hang Ngai Manufacturing and Hostel	601,000			143,783	457,217
(46) Renovating, furnishing and equipping for converting home for the aged places into long term care places for Lo Man Huen Home for the Elderly in Sha Tin	9,716,000			—	9,716,000
(47) Renovating, furnishing and equipping for converting home for the aged places into long term care places for Ma Cheng Shuk Ying Home for the Elderly in Shamshuipo	6,638,000			—	6,638,000
(48) Renovating, furnishing and equipping Ma Hing Chou Home for the Elderly in Sha Tin	5,374,000			—	5,374,000
(49) Replacing the existing 14-seater private light bus with a new 14-seater liquefied petroleum gas private light bus for Fong Shu Chuen Day Care Centre for the Elderly	790,000			—	790,000
(50) Replacing the existing 13-seater private light bus with a new 13-seater liquefied petroleum gas private light bus for Fong Shu Chuen Care and Attention Home	802,000			—	802,000
(51) Undertaking fire safety/building safety rectification measures to meet the statutory requirements under the Residential Care Homes (Persons with Disabilities) Ordinance for Wong Cho Tong Integrated Vocational Rehabilitation Centre cum Hostel	484,000			—	484,000
(52) Upgrading the provision of hospital beds in Hui Mok Tak Yu Care and Attention Home	780,000			—	780,000
(53) Upgrading the provision of hospital beds in Pao Siu Loong Care and Attention Home	1,196,000			—	1,196,000
(54) Upgrading the provision of hospital beds in Tai Tung Pui Care and Attention Home	1,638,000			—	1,638,000
(55) Upgrading the provision of hospital beds in Wong Cho Tong Care and Attention Home	2,379,000			—	2,379,000
(56) Upgrading the provision of hospital beds in Wu York Yu Care and Attention Home	728,000			—	728,000
(57) Upgrading the provision of hospital beds in Y C Liang Memorial Home for the Elderly	689,000			—	689,000
(58) Upgrading the provision of hospital beds in Yu Chun Keung Memorial Care and Attention Home	1,573,000			—	1,573,000
(59) Upgrading the provision of hospital beds in Jockey Club Yee King Care and Attention Home	455,000			—	455,000
(60) Upgrading the provision of hospital beds in Jockey Club Yee Lok Care and Attention Home	533,000			—	533,000
(61) Upgrading the provision of hospital beds in Jockey Club Yee On Care and Attention Home	559,000			—	559,000
(62) Upgrading the provision of hospital beds in Jockey Club Yee Tai Care and Attention Home	611,000			—	611,000
(63) Upgrading the provision of hospital beds in Jockey Club Yee Yeung Care and Attention Home	611,000			—	611,000

Lotteries Fund

STATEMENT OF APPROVED GRANTS—continued

Descriptions	Approved Grants	2013–14 Payments			Accumulated Payments to 31.3.2014	Unspent Balances (N=Not required)
	HK\$	Original Estimate HK\$	Amended Estimate HK\$	Actual HK\$	HK\$	HK\$
(64) Furnishing and equipping for a new day care centre for the elderly in Sha Tin	2,177,000			—	—	2,177,000
(65) Fitting out a new day care centre for the elderly in Sha Tin	4,298,000			—	—	4,298,000
(66) Replacing the existing 13-seater liquefied petroleum gas private light bus with a new 13-seater liquefied petroleum gas private light bus for Wu Chiang Wai Fong Care and Attention Home	837,000			—	—	837,000
(67) Replacing the existing 7-seater private car with a new 14-seater liquefied petroleum gas private light bus for Wilson T.S. Wang District Elderly Community Centre	862,000			—	—	862,000
(68) Fitting out a new day activity centre cum hostel for severely mentally handicapped persons in Tin Shui Wai	13,993,000			—	—	13,993,000
(69) Furnishing and equipping a new day activity centre cum hostel for severely mentally handicapped persons in Tin Ching Estate, Tin Shui Wai	3,187,000			—	—	3,187,000
(70) Replacing the existing 7-seater private car with a new 14-seater liquefied petroleum gas private light bus for Wong Cho Tong Integrated Home Care Services Centre	825,000			—	—	825,000
(71) Implementing a youth retraining pilot projects for programme workers to work in residential care homes for the elderly	1,035,000			258,750	258,750	776,250
(72) Fitting out the additional premises of CROSS Centre serving Central Western, Southern and Islands districts in Tung Chung	1,087,000			—	—	1,087,000
(73) Furnishing and equipping a new 100-place residential care home for the elderly cum 30-place day care unit in Tai Wai	3,847,000			—	—	3,847,000
(74) Fitting out a new 100-place residential care home for the elderly cum 30-place day care unit in Tai Wai	20,464,000			—	—	20,464,000
(75) Fitting out works for setting up new district support centres for persons with disabilities in Sai Ying Pun	3,419,000			—	—	3,419,000
(76) Furnishing and equipping for upgrading the provision of hospital beds for Wu York Yu Care and Attention Home	520,000			—	—	520,000
(77) Furnishing and equipping for upgrading the provision of hospital beds for Wu Chiang Wai Fong Care and Attention Home	2,418,000			—	—	2,418,000
(78) Furnishing and equipping for upgrading the provision of hospital beds for Jockey Club Yee Hong Care and Attention Home	494,000			—	—	494,000
	796,223,000	185,878,000	66,595,000	16,181,619	279,423,894	516,799,106
108. United Christian Nethersole Community Health Service	—	—	—	—	—	—
(1) Replacing the existing 14-seater private light bus with a new 12-seater liquefied petroleum gas private light bus for Lei Yue Mun Day Care Centre for the Elderly in Yau Tong	717,000			—	608,739	108,261 N
(2) Replacing the existing 7-seater van with a 12-seater private light bus for Tai Po Integrated Home Care Service Team in Tai Po	735,000			—	730,240	4,760 N
(3) Replacing the existing 14-seater private light bus with a new 12-seater liquefied petroleum gas private light bus for Lei Yue Mun Day Care Centre for the Elderly in Yau Tong	717,000			—	608,739	108,261 N
	2,169,000	—	—	—	1,947,718	221,282
109. United Muslim Association of Hong Kong	—	—	—	—	—	—
Renovating, furnishing and equipping Haji Omar Ramju Sadick Care and Attention Home at Yau Oi Estate, Tuen Mun	1,039,200	—	—	—	—	1,039,200
110. University of Hong Kong	—	2,632,000	10,456,000	—	—	—
(1) Organising the 5th International Conference of Social Work in Health and Mental Health	1,500,000			—	—	1,500,000

Lotteries Fund

STATEMENT OF APPROVED GRANTS—continued

Descriptions	Approved Grants	2013–14 Payments			Accumulated Payments to 31.3.2014	Unspent Balances (N=Not required)
	HK\$	Original Estimate HK\$	Amended Estimate HK\$	Actual HK\$	HK\$	HK\$
(2) Implementing a three-year pilot project on community-based intervention to suicide clusters	5,139,000			1,200,000	4,500,000	639,000
(3) Conducting an evaluative study of three pilot cyber youth outreaching projects	789,000			157,800	394,500	394,500
(4) Conducting a review of the information technology strategy for the social welfare sector	1,189,000			713,005	1,188,397	603
(5) Implementing a three-year project on enhancement of the infrastructure of long-term care in Hong Kong	24,676,000			6,169,000	6,169,000	18,507,000
	33,293,000	2,632,000	10,456,000	8,239,805	12,251,897	21,041,103
111. Wai Ji Christian Service		559,000	559,000			
(1) Fitting out a district support centre for persons with disabilities at Long Ping Estate, Yuen Long	4,310,200			—	4,309,423	777 N
(2) Undertaking fire safety/building safety rectification measures for Hor Ping Hostel	652,000			—	—	652,000
(3) Renovating Nam Shan Day Activity Centre in Shek Kip Mei	3,804,000			—	—	3,804,000
	8,766,200	559,000	559,000	—	4,309,423	4,456,777
112. Women Service Association						
Fitting out a new mutual help child care centre at Kwai Chung Estate, New Territories	1,050,100	205,000	205,000	53,477	898,700	151,400
113. Women's Welfare Club (Eastern District) Hong Kong		1,012,000	1,012,000			
(1) Replacing the water supply system for Ng Siu Mui Home cum Care and Attention Unit for the Elderly in Shau Kei Wan	1,012,000			—	—	1,012,000
(2) Replacing the existing 12-seater diesel private light bus with a new 15-seater diesel private light bus for Ng Siu Mui Home cum Care and Attention Unit for the Elderly	824,000			—	—	824,000
	1,836,000	1,012,000	1,012,000	—	—	1,836,000
114. Women's Welfare Club, Western District, Hong Kong						
Installing a passenger lift for Chung Hok Social Centre for the Elderly in Sheung Wan	2,961,700	—	512,000	365,605	2,654,076	307,624
115. Yan Chai Hospital		11,026,000	11,026,000			
(1) Fitting out a care and attention home for the severely disabled persons at Lei Muk Shue Estate, Tsuen Wan	6,727,800			—	6,117,950	609,850
(2) Fitting out an additional premises of Fong Yock Yee Neighbourhood Elderly Centre at Tsuen Wan Baptist Church, Tsuen Wan	1,465,200			—	1,255,615	209,585
(3) Renovating, furnishing and equipping Yan Chai Hospital Artiste Training Alumni Association Care and Attention Home in Kwai Chung	8,095,900			—	160,500	7,935,400
(4) Furnishing and equipping a residential care home for the elderly at Un Chau Street Estate, Sham Shui Po	2,192,400			135,062	2,192,399	1
(5) Fitting out a residential care home for the elderly at Un Chau Street Estate, Sham Shui Po	18,792,000			—	14,052,140	4,739,860
(6) Fitting out a new district support centre for persons with disabilities in Tai Po District	3,798,000			—	3,219,624	578,376
(7) Furnishing and equipping a new district support centre for persons with disabilities in Tai Po District	420,000			419,899	419,899	101 N
(8) Upgrading the provision of hospital beds in Chinachem Care and Attention Home	1,801,000			1,526,220	1,526,220	274,780 N
(9) Upgrading the provision of hospital beds in Mrs. Kwok Yuk Cheung Care and Attention Home	1,594,000			1,102,400	1,102,400	491,600 N

Lotteries Fund

STATEMENT OF APPROVED GRANTS—continued

Descriptions	Approved Grants HK\$	2013–14 Payments			Accumulated Payments to 31.3.2014 HK\$	Unspent Balances (N=Not required) HK\$
		Original Estimate HK\$	Amended Estimate HK\$	Actual HK\$		
(10) Upgrading the provision of hospital beds in Tsin Man Kuen Elderly Home	428,000			—	252,450	175,550 <i>N</i>
(11) Replacing kitchen equipment for Chinachem Care and Attention Home in Kwai Chung	1,798,000			—	—	1,798,000
(12) Carrying out periodic electrical inspection for Yan Chai Hospital Multi-services Complex in Tsuen Wan	631,000			—	—	631,000
(13) Upgrading the provision of hospital beds in Artiste Training Alumni Association Care and Attention Home	1,716,000			—	—	1,716,000
(14) Upgrading the provision of hospital beds in Hong Kong Peninsula Lions Club Elderly Home	559,000			—	—	559,000
(15) Upgrading the provision of hospital beds in Li Chan Yuk Sim Elderly Home	468,000			—	—	468,000
(16) Furnishing and equipping for upgrading the provision of hospital beds for Yan Chai Nursing Home	4,303,000			—	—	4,303,000
(17) Renovating Wan Shing Memorial Day Care Centre for the Elderly in Shatin	2,376,000			21,397	21,397	2,354,603
(18) Improvement works for the air-conditioning system in Yang Chai Hospital Multi-services Complex in Tsuen Wan	1,471,000			—	—	1,471,000
(19) Furnishing and equipping for upgrading the provision of hospital beds for Mrs Kwok Yuk Cheung Care and Attention Home	650,000			—	—	650,000
	59,286,300	11,026,000	11,026,000	3,204,978	30,320,594	28,965,706
116. Yan Oi Tong Limited		1,000,000	1,543,448			
(1) Fitting out the Ng Kam Yuk Memorial Neighbourhood Elderly Centre to meet standard schedule of accommodation	950,000			171,902	946,454	3,546
(2) Fitting out the additional premises of the Toi Shan Association Neighbourhood Elderly Centre at Sui Wo Shopping Centre, Shatin	774,200			—	659,158	115,042
(3) Fitting out the additional premises of Pang Hung Cheung Neighbourhood Elderly Centre at Tak Nga Court, Tai Po	1,953,600			1,311,976	1,311,976	641,624
(4) Purchasing two 14-seater liquefied petroleum gas private light buses for Yan Oi Tong Lung Siu Nga Day Care Centre for the Elderly	1,528,000			—	—	1,528,000
(5) Renovating, furnishing and equipping Yan Oi Tong Mrs Augusta Cheung Kindergarten cum Nursery in Tai Po	1,184,000			—	—	1,184,000
	6,389,800	1,000,000	1,543,448	1,483,878	2,917,588	3,472,212
117. Yang Memorial Methodist Social Service		1,022,000	2,269,000			
(1) Fitting out for reprovisioning Yau Tsim Mong Integrated Children and Youth Services Centre to Mong Kok West Area 20 Phase 4	4,548,300			—	4,301,376	246,924
(2) Fitting out a new integrated rehabilitation services centre at Lei Yue Mun Estate, Kwun Tong	14,832,000			1,010,845	14,596,075	235,925
(3) Fitting out the additional premises of Oi Man Neighbourhood Elderly Centre in Ho Man Tin	1,478,000			—	1,258,836	219,164
(4) Fitting out a self-financing residential care home for persons with intellectual disabilities in Tuen Mun	3,261,000			—	2,238,637	1,022,363
(5) Replacing the existing private light bus with a new 14-seater liquefied petroleum gas private light bus for Bradbury Day Activity Centre in Waterloo Road	847,000			846,570	846,570	430 <i>N</i>
(6) Replacing a 8-seater private light bus with a 14-seater liquefied petroleum gas private light bus for Yau Mong Home Care Service	830,000			—	—	830,000

Lotteries Fund

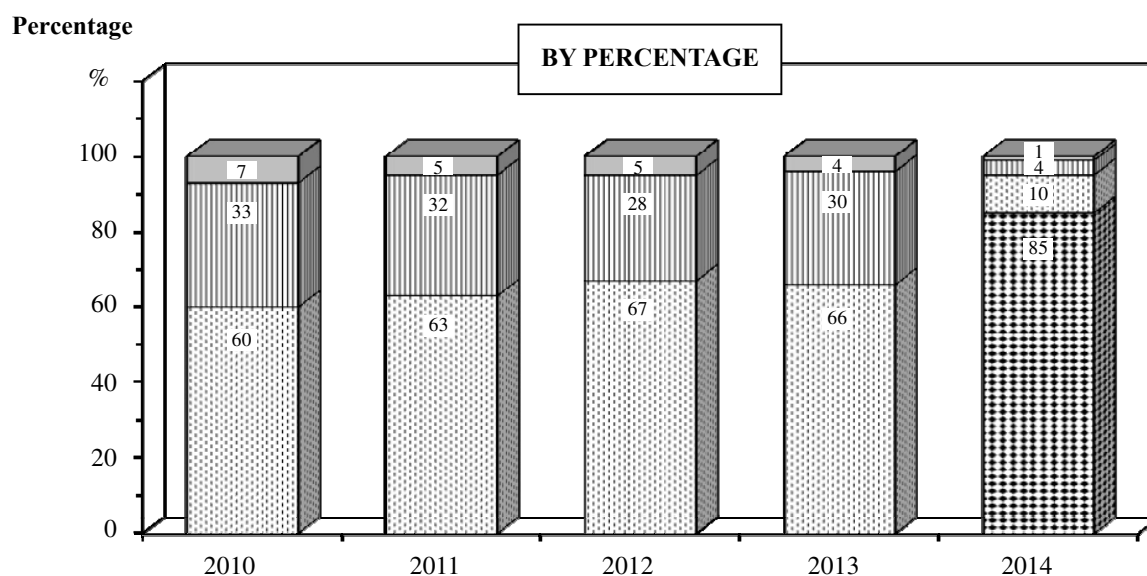
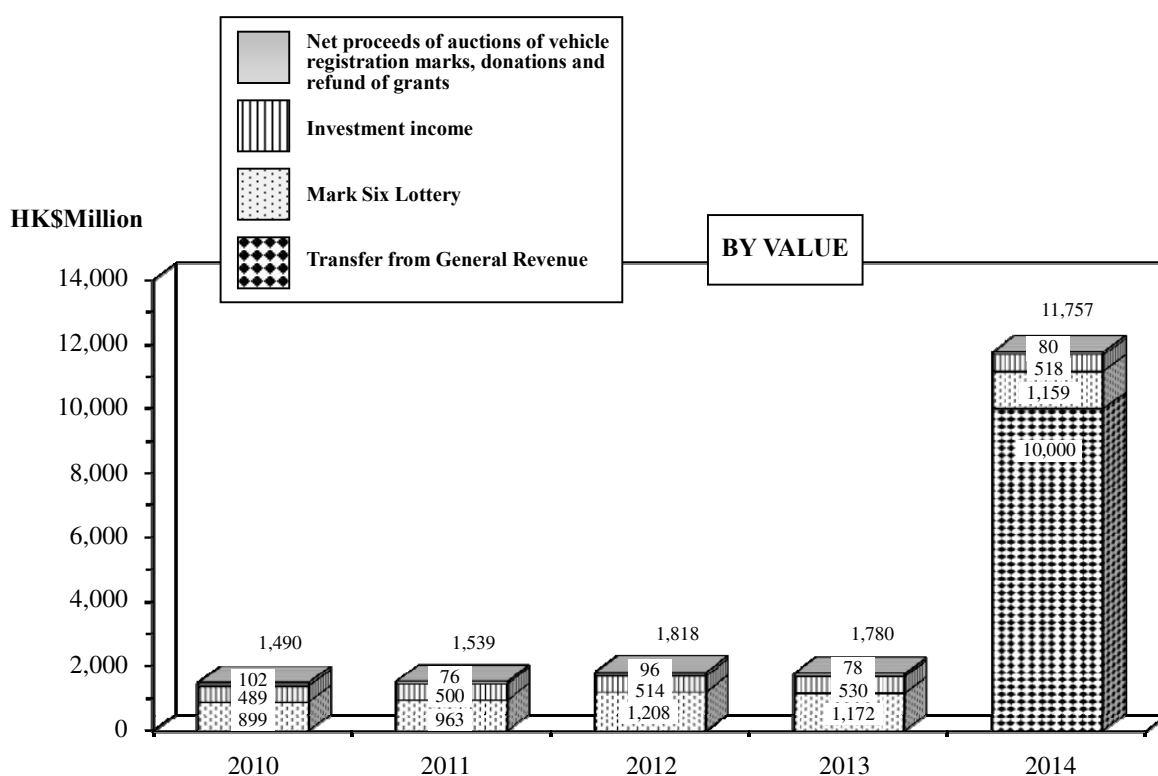
STATEMENT OF APPROVED GRANTS—continued

Descriptions	Approved Grants HK\$	2013–14 Payments			Accumulated Payments to 31.3.2014 HK\$	Unspent Balances (N=Not required) HK\$
		Original Estimate HK\$	Amended Estimate HK\$	Actual HK\$		
(7) Replacing a vehicle for Vocational Advancement Centre	810,000			—	—	810,000
(8) Furnishing and equipping for setting up a new district support centre for persons with disabilities in Sham Shui Po	433,000			—	—	433,000
(9) Fitting out a new district support centres for persons with disabilities in Sham Shui Po	6,545,000			—	—	6,545,000
	33,584,300	1,022,000	2,269,000	1,857,415	23,241,494	10,342,806
118. Youth Outreach						
Setting up an all-night drop-in centre for youth-at-risk on a 3-year pilot basis	20,336,600	—	—	—	19,326,494	1,010,106
119. Yuen Yuen Institute		1,368,000	7,011,000			
(1) Fitting out a new 124-place residential care home for the elderly cum a 20-place day care unit at Lei Muk Shue Estate, Tsuen Wan	18,510,400			—	16,296,968	2,213,432
(2) Renovating Yuen Yuen Elderly Centre (Sham Tseng) at Rhine Garden, Sham Tseng	1,252,500			30,549	1,123,973	128,527
(3) Upgrading the provision of hospital beds in Yuen Yuen Care and Attention Home for the Aged	972,000			—	690,000	282,000 N
(4) Implementing Scheme 1 of the pilot project on multi-skills workers training	15,648,000			642,362	642,362	15,005,638
(5) Furnishing and equipping Yuen Yuen Nursing Home (Sau Mau Ping Estate) in Kwun Tong	2,088,000			837,693	837,693	1,250,307
(6) Replacing the existing 12-seater diesel private light bus with a new 15-seater diesel private light bus for Yuen Yuen Nursing Home (Sau Mau Ping Estate) in Kwun Tong	762,000			—	—	762,000
(7) Implementing Scheme 2 of the pilot project on multi-skills workers training	14,763,000			—	—	14,763,000
(8) Furnishing and equipping for upgrading the provision of hospital beds for Yuen Yuen Care and Attention Home for the Aged	676,000			—	—	676,000
	54,671,900	1,368,000	7,011,000	1,510,604	19,590,996	35,080,904
Sub-total	9,494,546,200	995,066,000	1,108,253,000	646,503,934	5,346,336,128	4,148,210,072
120. Block grant	147,745,000	138,917,000	147,745,000	147,745,000	147,745,000	—
121. Minor grants (block vote)	83,542,100	33,000,000	33,000,000	17,814,555	33,977,393	49,564,707 (Note)
Total approved grants	9,725,833,300	1,166,983,000	1,288,998,000	812,063,489	5,528,058,521	4,197,774,779
					Unspent balances	4,197,774,779
					Balances not required (N)	(203,616,588)
					Outstanding commitments	3,994,158,191

Note: Including balance not required of HK\$1,771,697.

Lotteries Fund

ANALYSIS OF RECEIPTS BY VALUE AND BY PERCENTAGE FOR THE YEARS ENDED 31 MARCH 2010 TO 2014



Lotteries Fund

MARK SIX LOTTERY ALLOCATION OF GROSS PROCEEDS FOR THE YEARS ENDED 31 MARCH 2010 TO 2014

