

For discussion on  
12 December 2014

## **Legislative Council Panel on Home Affairs**

### **Signature Project Scheme (Sham Shui Po District) – Shek Kip Mei Community Services Centre**

#### **PURPOSE**

This paper seeks Members' views on the proposed construction of the Shek Kip Mei Community Services Centre ("the Centre") which is one of the proposed projects of the Sham Shui Po ("SSP") District under the Signature Project Scheme ("SPS").

#### **PROPOSALS AND JUSTIFICATIONS**

2. SSP District is a densely-populated district with a number of low income households, elderly people and new arrival families<sup>1</sup>. More community support services are welcomed in the district. Although a good number of charitable and district organisations are providing various kinds of support services to cater to the needs of the local residents, many of these organisations are still looking for additional space or new premises in order to expand or extend their services in SSP District.

3. Recognising the characteristics of the district, Sham Shui Po District Council ("SSPDC") proposes to embark upon two projects that would offer services to address local needs and benefit different social groups under the SPS. The first project is the establishment of the Centre, which will be located on the podium level of the Shek Kip Mei Estate Phase 3 at the junction of Berwick Street and Pak Tin Street fronting Mei Ho House. A location plan is at **Annex 1**. The Centre will occupy a construction floor area ("CFA") of

---

<sup>1</sup> According to the 2011 Population Census, the median monthly domestic household income of the district was \$16,280 as compared to the territory-wide figure of \$20,500; the percentage of elderly population of 65 and over was 17%, which ranked second among the 18 districts; and the number of persons from the Mainland having resided in Hong Kong for less than seven years were the second highest across all districts at about 19 000.

approximately 706 square metres (“m<sup>2</sup>”). A partner organisation has been selected to operate the Centre by providing three core services<sup>2</sup>, namely child care and after-school care support services, short-term food assistance and medical services, on a self-financing basis in the long run.

### **Selection of the Services to be Provided**

4. In determining the scope of its SPS projects, the SSPDC set up the Committee on the Sham Shui Po Signature Project (“CSSPSP”) in early 2013. Since then, the CSSPSP has carried out an extensive and in-depth district consultation to understand the views and wishes of SSPDC members, district organisations and local residents on the SPS projects of SSP District (please refer to paragraphs 23 and 24 below for details of the consultation process). Taking into account the comments and suggestions received, as well as considering the feasibility of the proposals concerned and the benefits they may bring to the district, the CSSPSP recommended and the SSPDC unanimously supported the implementation of the Centre to provide the following three core services under one roof -

(I) *Child care and after-school care support services*

5. To many low income and new arrival families in SSP District, the availability of more child care and after-school care support services at affordable charges would enable more parents especially women with younger children to join the workforce, thereby helping them integrate better into the community and improve the financial situation of their families. Although similar services are also available in the district at the moment, many district organisations and individuals have expressed during the district consultation the need for more of such services, especially if they can be provided during weekends and public holidays and/or with longer service hours, to meet the needs of the low income and new arrival families.

---

<sup>2</sup> Apart from the core services, other related services such as interest classes, support services for children with special learning needs and their families, activities to promote inclusion and volunteer opportunities may also be provided to enrich the service scope of the Centre and to cater to the different needs of the people in the district.

(II) *Short-term food assistance*

6. In order to render assistance to the underprivileged in the district, some local and charitable organisations have been providing, with subvention or otherwise, some form of food assistance programmes such as food bank or low-cost meal services in SSP District. Notwithstanding this, positive community views have been received during the consultation that the element of short-term food assistance should be included under the SPS project to extend the benefit to more local residents, including singleton elderly people and low income families.

(III) *Medical services*

7. In addition, the SSPDC and many local residents see the SPS project as a good opportunity for providing more medical services for the elderly and low income households in SSP District. Specifically, there has been widespread support from the community for the idea of including dental services and Chinese medicine on top of conventional medical services.

**Selection of the Site for the Centre**

8. SSP is a built up area with few suitable sites available for construction of the proposed Centre for provision of the services mentioned in paragraphs 5 to 7 above. After a careful site search, the SSPDC identified a Housing Authority (“HA”) site at the junction of Berwick Street and Pak Tin Street fronting Mei Ho House, which is currently earmarked for Shek Kip Mei Estate Phase 3, and liaised with the HA for the use of the site accordingly. As the site is currently under development by the HA and to minimise interfacing issues, we are arranging to entrust the design and construction of the Centre to the HA, subject to funding approval by the Finance Committee (“FC”) of the Legislative Council (“LegCo”), so that the Centre will be built as part of the Shek Kip Mei Estate Phase 3 housing development. It is scheduled that the housing development will commence construction in mid-2015 for completion in 2018.

**Selection of the Partner Organisation**

9. With the support of the SSPDC for the scope of services to be

provided (set out in paragraphs 5 to 7 above), and the HA's in-principle agreement to accept the entrustment arrangement to construct the Centre at the Shek Kip Mei Estate Phase 3 site, Sham Shui Po District Office ("SSPDO") acted on behalf of the SSPDC to invite non-profit-making organisations ("NPOs") to submit proposals on the operation of the Centre and provision of the three core services on a self-financing basis. After a robust and fair selection process<sup>3</sup>, SSPDC selected Po Leung Kuk ("PLK") as its partner organisation for this project.

10. The CSSPSP has carefully vetted the proposal submitted by PLK, which seeks to operate the Centre in two parts, namely the "Social Services" portion and the "Medical Services" portion. The former would include child care, after-school care support and short-term food assistance services; while the latter would include the provision of Western and Chinese medical services, dental services, physiotherapy, etc.

11. Specifically, the "Social Services" portion would provide child care services for infants and children aged between 0 to 6 years, after-school care support services (including homework guidance and other training) for students aged between 6 to 12 years, and short-term food assistance service that delivers up to 120 low-cost meals each day for people in need. PLK would also be providing training and compiling a register to facilitate the introduction of the "neighbourhood nanny" service, such that trained nannies may help babysit children of families in SSP District. Other inclusion and support services targeting at children with special learning needs, underprivileged groups and ethnic minorities, etc. would also be provided with a view to enhancing the overall effectiveness of the Centre.

12. On the "Medical Services" portion, in addition to conventional Western medical services, PLK would be providing Chinese medical services, dental services, physiotherapy, acupuncture, "Tuina" services etc. at affordable prices to suit the needs of different people. Elderly people and low income families may also be eligible for concessionary fees or even free services.

13. According to the latest plan, upon the commissioning of the operation

---

<sup>3</sup> Invitation for NPOs to submit proposals was posted in local newspapers and SSPDC's website in April 2014. Eight proposals were received by the deadline in May 2014. The CSSPSP assessed the proposals according to the assessment criteria.

of the Centre, the “Social Services” and “Medical Services” portions of the Centre would benefit approximately 70 000 and 44 000 person times respectively each year. A synopsis of the PLK’s proposal is at **Annex 2**.

### **Operation and Sustainability**

14. As the selected partner organisation, PLK will operate the Centre and provide the services mentioned in paragraphs 11 and 12 above on a self-financing basis in the long run. PLK will only pay a nominal rent for the Centre, but it will be responsible for paying the management and maintenance fee to the Housing Department, as well as electricity and other charges.

15. SSPDC, SSPDO and PLK will endeavor to enhance the sustainability of the Centre through, for instance, the flexible use of the space of the Centre with a view to (i) generating more revenue to offset operational cost as far as practicable; and (ii) improving space utilisation by allowing other local organisations to rent activity rooms for organising different activities, when they are not in use. All services fees/revenue received will be used for sustaining the operation of the Centre. In the event that the Centre still records deficits in its operations, the Board of the PLK has agreed to absorb such deficits by either its own financial reserve or the donations it receives. SSPDC recognises the commitment PLK has demonstrated towards this SPS project and agrees that PLK, with extensive experience in providing similar services across the territory, is a trustworthy partner with the requisite expertise, capability and resources to operate the Centre and deliver the services.

### **Role of the SSPDC and SSPDO**

16. Under the SPS, District Councils (“DCs”) will be responsible for implementing their SPS projects, monitoring project progress and evaluating effectiveness. In this case, while PLK would be primarily responsible for the delivery of the services, SSPDC and SSPDO will join hands to ensure effective monitoring of the quality of the services delivered. Specific requirements on the services and management control will be set out in a service agreement to be signed between PLK and SSPDO. Upon commissioning of the Centre, the CSSPSP will continue to play a leading role in monitoring the implementation of the SPS in the district.

17. SSPDO plans to sign a service agreement with PLK for an initial period of five years from the commencement of the Centre's operation. Subject to the operation of the Centre and delivery of the services to the satisfaction of SSPDC and SSPDO, and compliance with the terms and conditions of the service agreement, the agreement may be renewed every three years thereafter.

### **Construction Works**

18. Based on the service proposals submitted by PLK, the proposed scope of works involves the construction of a centre with an CFA of approximately 706 m<sup>2</sup> comprising the following facilities –

- (i) four activity rooms;
- (ii) an after-school child care services room;
- (iii) a child care room with baby care room;
- (iv) a toy library and resources area;
- (v) a common/activity area;
- (vi) a food preparation room;
- (vii) two treatment rooms;
- (viii) four medical consultation rooms;
- (ix) a massage and manipulation area; and
- (x) ancillary facilities including an interview room, offices, store rooms, waiting area and special waiting room, reception, registration, dispensary, toilets and mechanical and electrical plant rooms.

The layout plan, sectional plan and artist's impression showing the proposed works are at **Annexes 3, 4 and 5** respectively.

## **Publicity**

19. Once the funding for the implementation of the Centre has been approved by the FC, the three parties: SSPDC, SSPDO and PLK would embark on a series of publicity programmes to promote the Centre and its services to local residents. These include large-scale and high-profile events to commemorate key milestones of the project development such as ground-breaking and opening of the Centre. Visits to local organisations, roving exhibitions and membership recruitment functions will also be held to familiarise the local residents with the Centre.

## **FINANCIAL IMPLICATION**

20. Under the SPS, a one-off allocation of \$100 million has been earmarked for each of the 18 districts. The estimated cost for works and related items under the “Shek Kip Mei Community Services Centre” is \$53.5 million in money-of-the-day prices. In addition, a provision of \$3.405 million will be earmarked for hiring non-civil service contract staff and implementing publicity and public engagement programmes for the project. A one-off subsidy to PLK of not more than 5% of the estimated cost for works and related items of the project, i.e. \$2.675 million, has also been set aside to subsidise the costs of start-up, operation, management and/or maintenance of the project for up to a maximum of two years after project commissioning<sup>4</sup>. The remaining funding will be earmarked for the other SPS project of SSP – “Mei Foo Neighbourhood Activity Centre”, which will be submitted separately to the FC of the LegCo for funding approval tentatively by mid-2015. The breakdown of budget is at **Annex 6**.

## **IMPLEMENTATION**

21. To dovetail with the construction programme of the Shek Kip Mei Estate Phase 3, we are arranging to entrust the proposed works to HA.

---

<sup>4</sup> Other costs not covered by the one-off subsidy and all future recurrent costs of the Centre will be borne by PLK.

22. Subject to Members' support, we will proceed with seeking funding approval from the Public Works Sub-committee ("PWSC") of LegCo and the FC. Subject to the funding approval of the FC, we plan to commence the construction works in mid-2015 for completion in 2018.

## **PUBLIC CONSULTATION**

23. The SSPDC and SSPDO carried out extensive local consultation from March to September 2013 and specifically, two district workshops were held in May and August 2013. During the consultation period, local residents and organisations expressed their clear wish for the provision of expanded and extended community services suitable for various social groups in the SSP District. By the end of the local consultation period, a total of 70 proposals/comments were received. After careful consideration of their feasibility and merits, potential benefits to the community and suitability to the district, the CSSPSP decided to put forward the Shek Kip Mei Community Services Centre providing the three core services mentioned above, together with another project to construct the Mei Foo Neighbourhood Activity Centre. The aforementioned projects received unanimous support and endorsement by the SSPDC in December 2013.

24. A district workshop was held in January 2014 to collect public views on the details of the two projects. Invitation to NPOs to become the partner organisation of this project was issued in April 2014 subsequently. Altogether eight proposals for this project were received. The proposal summaries were uploaded onto SSPDC's website for comment by members of the public. The comments received were later submitted to the CSSPSP for consideration.

## **MEI FOO NEIGHBOURHOOD ACTIVITY CENTRE**

25. As mentioned in paragraph 3 above, apart from "Shek Kip Mei Community Services Centre", the SSPDC also proposed taking forward the "Mei Foo Neighbourhood Activity Centre" which aims at organising various activities for local residents to enrich their community life. We intend to consult Members on the Mei Foo project in the first quarter of 2015, before



submitting the proposal to the PWSC and FC for consideration.

## **BACKGROUND**

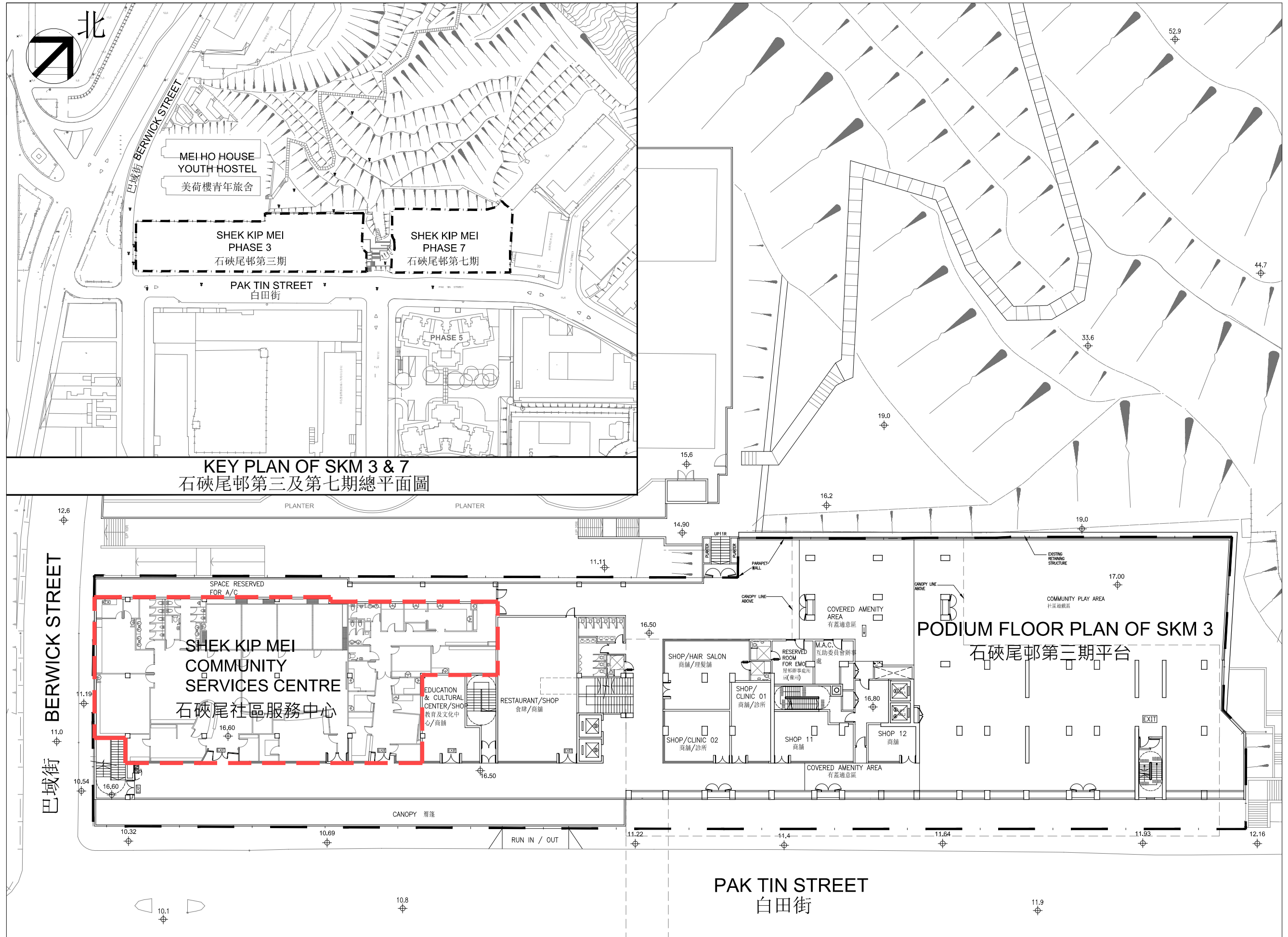
26. The Chief Executive announced in his 2013 Policy Address that a one-off provision of \$100 million would be earmarked for each district to initiate project(s) under the SPS. The project(s) should address local needs, or highlight the characteristics of the district, and have a visible and lasting impact in the community.

27. All the 18 DCs have agreed on the preliminary proposals of their SPS projects. The Home Affairs Department and respective District Offices are working closely with the DCs, relevant government bureaux and departments and where applicable, partner organisation(s) in taking forward the other projects, including examining their technical feasibility, before seeking Members' views and the funding approval from the FC. A list of the proposed projects of the 18 districts is at **Annex 7** for reference.

**Home Affairs Bureau**  
**Home Affairs Department**  
**December 2014**

# LOCATION PLAN - SHEK KIP MEI COMMUNITY SERVICES CENTRE

## 石硤尾社區服務中心 - 位置圖



(\*LAYOUT PLAN STILL UNDER DETAIL DESIGN DEVELOPMENT)  
(\*詳細規劃設計仍在進行中)

— — — — — BOUNDARY OF THE PROPOSED CENTRE 擬建中心範圍

**Sham Shui Po Signature Project Scheme –  
Shek Kip Mei Community Services Centre**

**Proposal Summary**

**1. Service Objectives**

- 1.1 The Shek Kip Mei Community Services Centre (“the Centre”) will comprise two parts, namely the “Social Services” portion and the “Medical Services” portion. The “Social Services” portion will mainly provide childcare services, after-school care support for students, short-term food assistance and other services like activities to promote social inclusion in the community. The “Medical Services” portion will cover Western and Chinese medical services, dental services, physiotherapy and paramedical services. Overall speaking, the Centre will provide much welcomed services to the people in Sham Shui Po especially the underprivileged families and those in need, thereby bringing about a visible and lasting impact to the district on a sustained basis.
- 1.2 Under the current proposal, the Centre will open on Monday to Saturday from 9 a.m. to 9 p.m., and on Sunday from 2 p.m. to 6 p.m.

**2. “Social Services” Portion**

- 2.1 Child Care Service: to provide child care services for up to 14 infants and children between 0-6 years at any one time. Service will be from every Monday to Friday between 9 a.m. to 8 p.m.
- 2.2 After-school Care Support for Students: to provide homework guidance and other development trainings to students of 6-12 years of age every Monday to Friday between 3:30 p.m. to 8 p.m. Services on Sundays and school holidays may also be provided upon application.
- 2.3 Home-base Child Care Service: the Centre will recruit and provide suitable trainings to “neighbourhood nannies”, and compile a register for referring trained nannies with families in need of home-based child care service in the district. This will also enable women in the district to join the workforce, thereby helping them integrate better into the community and improve the financial situation of their families.
- 2.4 Short-term Food Assistance: to provide 120 meals each day at a low price to those in need in the district. Eligible persons may receive food assistance for up to two weeks. Assistance period will be extended if the circumstances warrant. Delivery services will be available for the disabled and those with reduced mobility. Referral services will be made for those with other welfare needs.
- 2.5 Meal Voucher Programme: to encourage food shops/restaurants in the

district to sponsor food/meal vouchers which can be purchased at a discount by people in need for use at those food shops/restaurants later on.

- 2.6 Other services and inclusion activities: to provide people in the district, including but not limited to the new arrival and underprivileged families, classes and activities of different natures such as training for children with special learning needs, support for children with emotional problems and their parents, seminars or workshops for caretakers, activities for ethnic minorities in the area, etc. with a view to promoting harmony, love and care in the community. Other services and activities suitable to the community, including collaborations with the Sham Shui Po District Council, the Sham Shui Po District Office, as well as other district or social organisations will also be organised to make the most use of the space available at the Centre.

### 3. “Medical Services” Portion

- 3.1 This portion will provide comprehensive medical services to the people in Sham Shui Po particularly families and elderly people living close by. In addition to Western medical service, there will also be Chinese medical service, dental service, physiotherapy, acupuncture and “Tuina” service to suit the needs of different people at an affordable price – concessionary fees will be applicable to eligible persons\*.
- 3.2 As a complete service centre, other paramedical services including occupational therapy, speech therapy, clinical psychological service and nutritional care will also be available in this portion. Community health education and disease preventive programmes such as weight control, medicine management, patient education, dietary information, etc. will be covered with the purpose of building a healthy community.
- 3.3 Under the current proposal, the service hours will be on every Monday to Saturday from 10 a.m. to 2 p.m. and 4 p.m. to 8 p.m. Western medical service will also be available on Sundays and public holidays from 2 p.m. to 6 p.m. for the convenience of the users.

### 4. Estimated Charges of the Proposed Core Services

- 4.1 The estimated charges of the various core services at today’s prices are as follows -

Services	Childcare services	After-school care support for students	Short term food assistance
Estimated Charges	\$12.5/hour	\$1,000/month (not including meals)	\$10/meal

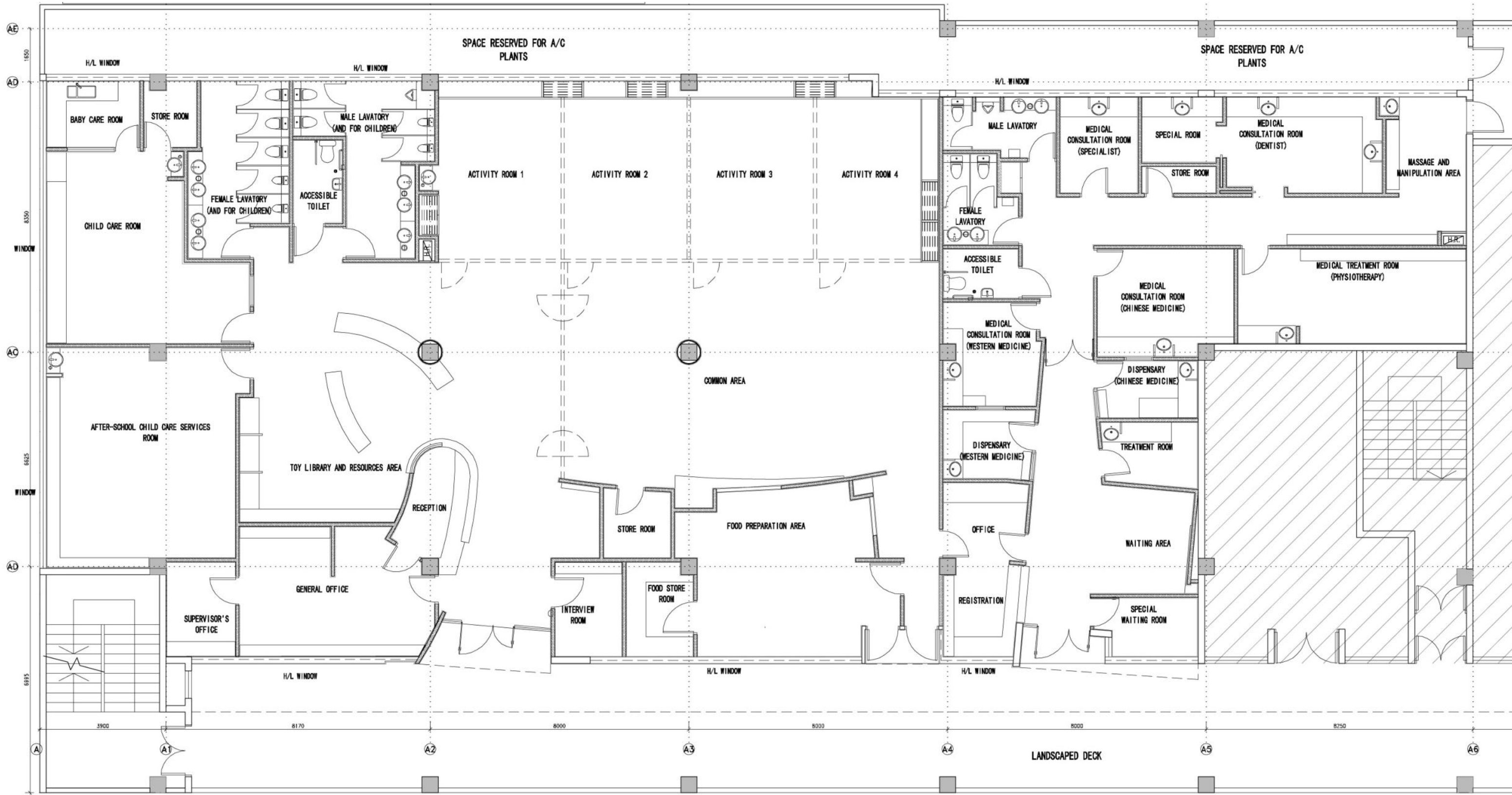
<b>Services</b>	<b>Standard Fee</b>	<b>Concessionary Fee*</b>
<b>Western Medical Services</b>		
i. General outpatient (including medicine for 3 days)	i. \$130	i. \$65
ii. Specialist (not including medicine)	ii. \$240-\$340	ii. Not applicable
iii. Vaccination (not including vaccine)	iii. \$40	iii. \$20
<b>Chinese Medical Services</b>		
i. General consultation (including 2 packs of medicine)	i. \$110	i. \$65
ii. Acupuncture	ii. \$165	ii. \$100
iii. Tuina (for 25-50 minutes)	iii. \$100-\$200	iii. \$60-\$120 (aged 65 or above only)
<b>Dental Services</b>		
i. Consultation	i. \$50	i. \$30
ii. Scaling, filling or extraction	ii. \$230-\$420	ii. \$140-\$250
iii. Dentures	iii. Subject to actual situation	iii. Not applicable
<b>Paramedical Services</b> (for 50 minutes)	\$140-\$280	\$80-\$160 (aged 65 or above only)

\* Concessionary fee: Elderly aged 65 or above, Comprehensive Social Security Assistance recipients and residents/families under the School Textbook Assistance Scheme or the Kindergarten and Child Care Centre Fee Remission Scheme are eligible for the concessionary fee. Service fees could be waived for persons with special financial difficulties after vetting. Health Care Vouchers will be accepted.

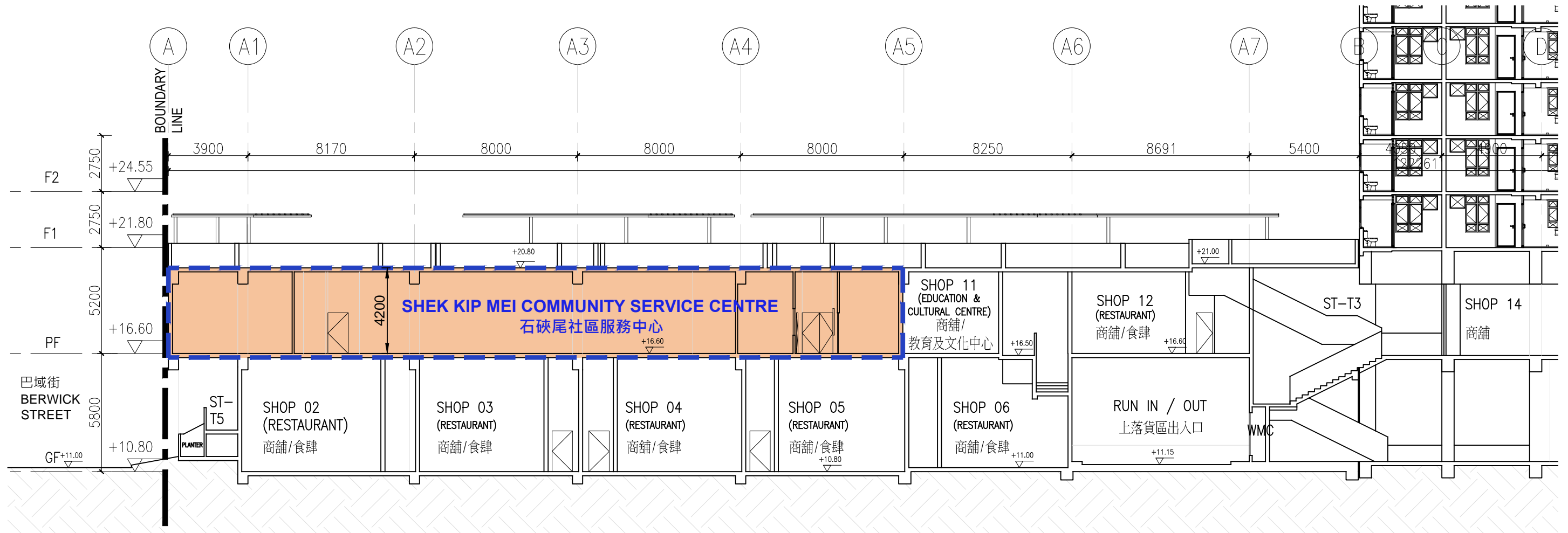
## **5. Estimated Number of People Benefited**

5.1 When in full operation, the “Social Services” portion and the “Medical Services” portion are expected to benefit approximately 70 000 and 44 000 person times each year respectively.

Layout Plan – Shek Kip Mei Community Services Centre



## SECTIONAL PLAN - SHEK KIP MEI COMMUNITY SERVICES CENTRE

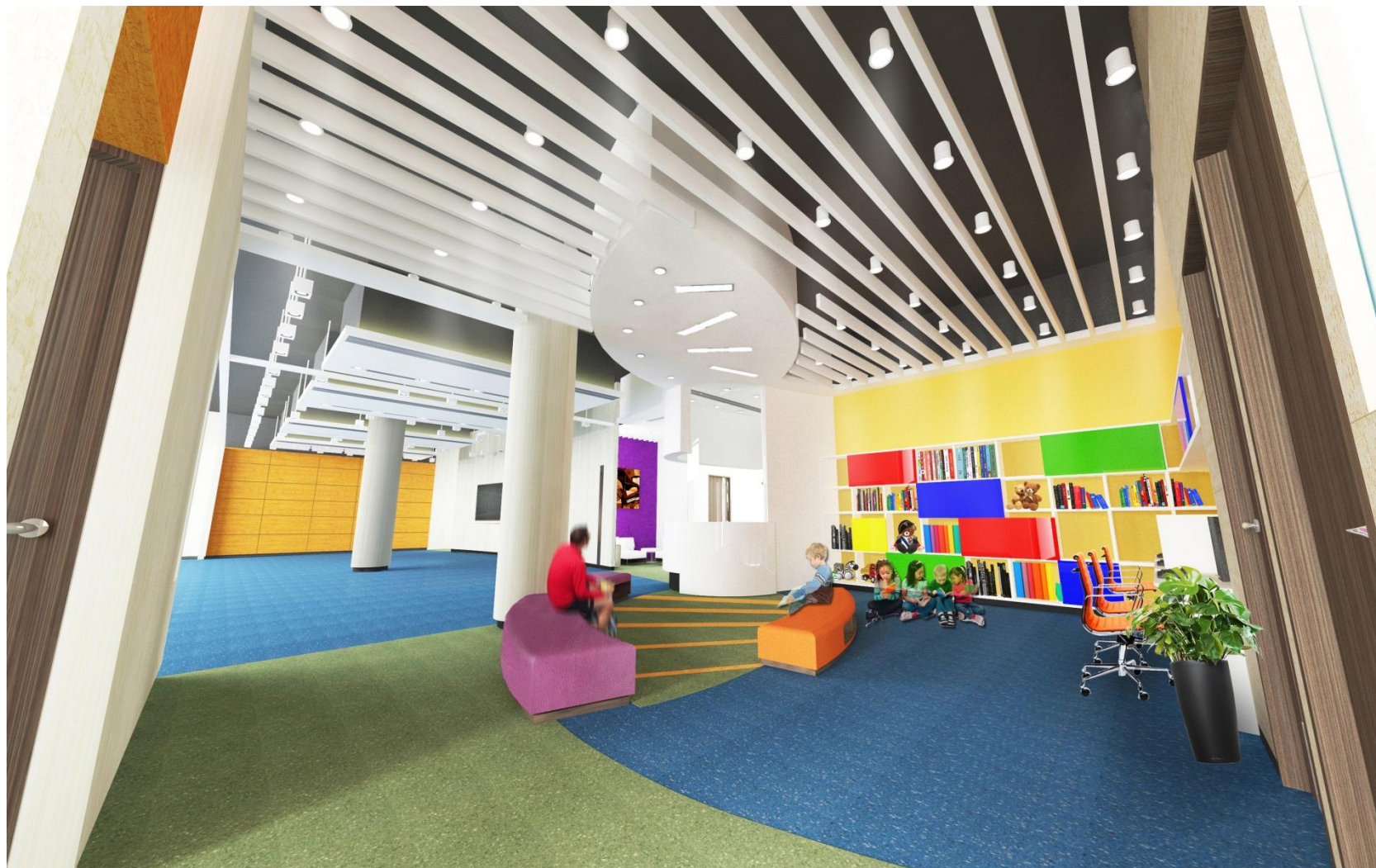


石硤尾邨第三期平台局部剖面圖

SKM 3 - PARTIAL SECTION OF PODIUM



**Artist's Impression – Shek Kip Mei Community Services Centre  
(Social Services Portion)**





**Artist's Impression – Shek Kip Mei Community Services Centre  
(Medical Services Portion)**



### Overview of the cost of the Sham Shui Po SPS Projects

Items	Estimated Cost
<b>A. Shek Kip Mei Community Services Centre</b>	
Works and Related Items	\$53.5 million (in money-of-the-day prices)
Publicity/ Public Engagement Activities	\$0.805 million
Non-Civil Service Contract Staff	\$2.6 million
One-off subsidy to NPO	\$2.675 million
<b>Total</b>	<b>\$59.58 million</b>
<b>B. Mei Foo Neighbourhood Activity Centre <sup>1</sup></b>	
<b>Total</b>	<b>\$34.95 million</b>
<b>Total Cost of the Two SPS Projects</b>	<b>\$94.53 million</b>

---

<sup>1</sup> The estimated cost of the project is only a rough indication. A realistic estimate will be provided when the detailed design has been completed.

**Signature Project Scheme**  
**List of Preliminary Proposals from 18 Districts**

<b>District</b>	<b>Title</b>	<b>Description</b>
Central and Western	Harbourfront enhancement and revitalisation at the Western Wholesale Food Market	Enhancement and revitalization of the harbourfront area adjoining the Western Wholesale Food Market as a vibrant promenade and open space for public enjoyment, with myriad community involvement activities to promote vibrancy of the harbour.
Wan Chai	Moreton Terrace Activities Centre	Provision of a performance and activity venue at Moreton Terrace for organizing a wide range of community building, cultural and leisure activities for local residents.
Eastern	Eastern District Cultural Square	Construction of Eastern District Cultural Square to provide open space which could be used for, inter alia, cultural activities; and to revitalise the waterfront and promote the tourism of the Eastern District.
Southern	Development of seafood dining facilities near the Aberdeen Wholesale Fish Market	Development of seafood dining facilities near the Aberdeen Wholesale Fish Market with a view to promoting and highlighting the fishermen culture of the Southern District.
Kwun Tong	Construction of music fountains at Kwun Tong Promenade	Construction of music fountains with integration of dynamic lighting, musical features and special effects riding on the promenade of Kwun Tong with a view to making it a place for public leisure and enjoyment of harbour views.
	Construction of lift tower at Shung Yan Street in Kwun Tong	Construction of a lift tower at Shung Yan Street in Kwun Tong to enhance the overall barrier free access facilities at Hong Ning Road Recreation Ground which is a key pedestrian access connecting the nearby public rental housing estates where a large number of elderly residing and the Kwun Tong Town Centre so as to help the elderly and physically impaired integrate into the community.

<b>District</b>	<b>Title</b>	<b>Description</b>
Wong Tai Sin	Expansion and improvement of Wong Tai Sin Square <sup>Note 1</sup>	Expansion and improvement of Wong Tai Sin Square with a view to allowing organizations to better utilize this ideal venue of the district for hosting community events.
	Enhancement of leisure facilities of Morse Park	Enhancement of facilities at the amphitheater at Morse Park No. 4 for hosting district and territory-wide events.
Kowloon City	Revitalisation of the rear portion of the Cattle Depot	Revitalisation of the rear portion of the Cattle Depot to make available an open space for recreation purpose in the To Kwa Wan area, and to facilitate the promotion of arts and culture to the community as well as the unique background of the Cattle Depot.
Sham Shui Po	Shek Kip Mei Community Services Centre	Construction of a community services centre in Shek Kip Mei to provide various community services to meet local needs and enhance service coverage in the district.
	Mei Foo Neighbourhood Activity Centre	Construction of a neighbourhood activity centre at Mei Foo with multi-purpose rooms for holding various activities for local residents.
Yau Tsim Mong	Multicultural activity venue at Battery Street	Development of a multicultural activity venue at Battery Street to promote cultural diversity and advance social cohesion in Yau Tsim Mong district. Community involvement and publicity activities will be organised to enhance mutual understanding between different ethnic groups and the mainstream community in the district, and to illustrate the multicultural characteristics of the district.
Sha Tin	Revitalization of Shing Mun River promenade near Sha Tin town centre	Revitalization of Shing Mun River promenade near Sha Tin town centre to enhance public enjoyment.
	Decking of Tai Wai Nullah in Sha Tin	Decking of Tai Wai Nullah in Sha Tin for provision of recreation facilities.

<b>District</b>	<b>Title</b>	<b>Description</b>
Tai Po	Establishment of an art development centre by retrofitting Tai Po Government Secondary School	Establishment of an art development centre by retrofitting the premises of the former Tai Po Government Secondary School, which has been vacated since 1 September 2014, to facilitate the further development of arts and culture in Hong Kong, and in particular, Tai Po District.
	Improving the tourist facilities at Lam Tsuen Wishing Square	Improving the tourist facilities at Lam Tsuen Wishing Square with an aim to preserve and further promote the unique culture in Tai Po on wish-making.
North	Improvement of trails and provision of ancillary facilities at Wu Tip Shan and Wa Mei Shan in Fanling	Improvement of trails and provision of ancillary facilities at Wu Tip Shan and Wa Mei Shan in Fanling to encourage healthy living, promote tourism and establish a landmark in the district.
	Improvement of trails and provision of facilities in Sha Tau Kok	Improvement of trails and provision of facilities in areas in Sha Tau Kok adjoining the Double Haven Marine Park and Geo-Area of the Hong Kong Global Geopark of China to promote eco-tourism and support the continual recognition of the area by the Global Geoparks Network by United Nations Educational, Scientific and Cultural Organisation.
Sai Kung	Reconstruction of the Sharp Island Pier	Reconstruction of the Sharp Island Pier so as to respond to the strong district aspiration and promote local tourism in Sai Kung.
	Construction of the Tseung Kwan O Heritage Hiking Trail (including Duckling Hill, former Tiu Keng Leng Police Station, Mau Wu Shan Observation Post and other monuments) and History and Heritage Information Centre	Construction of the Tseung Kwan O Heritage Hiking Trail and History and Heritage Information Centre with a view to re-capturing the heritage of Tseung Kwan O.

<b>District</b>	<b>Title</b>	<b>Description</b>
Kwai Tsing	Enhancement of Community Healthcare <sup>Note 2</sup>	Provision of comprehensive community healthcare service such as disease prevention, dental care service, ophthalmic care service, household visits, health education and assessment to local residents; and installation of fitness equipment and information kiosks at suitable locations in the district.
Tsuen Wan	Redevelopment of the Sai Lau Kok Garden	To redevelop the Sai Lau Kok Garden by raising a part of it to become a podium garden with connection to the existing footbridge network outside the Tsuen Wan MTR station, and to construct a multi-purpose centre, including an indoor multi-purpose room, at ground level.
Tuen Mun	Revitalization of Tuen Mun River and surrounding areas	Revitalisation of Tuen Mun River and surrounding areas to make livelier areas along the shores of the Tuen Mun River and surrounding areas by incorporating cultural elements.
	Promotion of youth development in Tuen Mun	Promotion of youth development to provide additional venue(s) with comprehensive facilities for young people to fully explore and develop their different potential.
Yuen Long	Construction of a Yuen Long District Community Services Building	Construction of Yuen Long District Community Services Building to provide more premises for delivering enhanced community services to meet the needs of the increasing population in the district, notably from the youth, ethnic minority and new arrival communities.
Islands	Improvement works at Silvermine Bay Beach, Mui Wo	Improvement works at Silvermine Bay Beach, Mui Wo with a view to improving the beach facilities so as to better serve the visiting public while adopting a more modern and aesthetically pleasing design.

<b>District</b>	<b>Title</b>	<b>Description</b>
Islands (Cont'd)	Yung Shue Wan Library cum Heritage and Cultural Showroom, Lamma Island	Redevelopment of the North Lamma Public Library building at Yung Shue Wan, Lamma Island to increase the floor space to house the library and a showroom for relics and photos of Lamma Island to enable residents and tourists having an overview of the island's heritage and major scenic spots upon disembarking from the pier.

Note 1 : With members' support given on 23 July 2014, the Administration plans to seek endorsement of the Legislative Council (LegCo) Public Works Subcommittee (PWSC) on the works component of the Expansion and Improvement of Wong Tai Sin Square project within the 2014-15 legislative session.

Note 2 : With members' support given on 10 January 2014, the PWSC endorsed the works component of the Signature Project Scheme project of Kwai Tsing District on 19 March 2014; and funding approval for the project was given by the Finance Committee on 12 July 2014.