

Legislative Council Panel on Housing

Public Works Programme Items No. B080TI and B081TI

**Public Transport Interchange and Associated Works to Support
Public Housing Developments at Kwai Chung and Ping Shan**

PURPOSE

This paper seeks Members' support for the Administration's proposal to upgrade the following two Public Works Programme items to Category A so as to support the public housing developments at Kwai Chung and Kiu Cheong Road East, Ping Shan –

- (a) **B080TI - Public Transport Interchange at Container Port Road and Junction Improvement Works along Kwai Chung Road, Kwai Chung; and**
- (b) **B081TI - Public Transport Interchange and Associated Works at Kiu Cheong Road East, Ping Shan.**

PROJECT PROPOSAL

2. The scope of works under **B080TI** includes –

- (a) construction of a Public Transport Interchange (PTI) with four bays, each for coaches, franchised buses, green minibuses and taxis;
- (b) improvement works at the junctions at Kwai Chung Road/Kwai Foo Road and Kwai Chung Road/Kwai Yik Road; and
- (c) associated works including drainage, lighting and fire services systems, and landscaping works.

———— Site plans showing the proposed works are at Enclosures 1 and 2.

3. The scope of works under **B081TI** includes –

- (a) demolition of two existing PTIs and associated services and structures; and

- (b) construction of :
- (i) a PTI with four bays for franchised buses;
 - (ii) a footbridge with a pedestrian lift across Ping Ha Road linking to Tin Shui Wai West Rail Station;
 - (iii) footpaths, cycle tracks and road side lay-bys at Kiu Fat Street and Ping Ha Road;
 - (iv) cycle parking area; and
 - (v) associated works including covers for the PTI, drainage, lighting, electrical and mechanical systems, and landscaping works.

————— A site plan of the proposed works is at Enclosure 3. Artist's impression
————— drawings of the proposed PTI and the footbridge link are at Enclosures 4
and 5 respectively.

4. We plan to commence the construction works of the PTI and junction improvement works in Kwai Chung under **B080TI** in April 2015 for completion in February 2017. The construction works for the PTI and associated works in Ping Shan under **B081TI** are scheduled to commence in April 2015 for completion in January 2018.

JUSTIFICATIONS

5. The public housing sites at ex-Kwai Chung Police Married Quarters (ex-KCMQ), Kwai Chung, and Kiu Cheong Road East, Ping Shan will be developed to meet the increasing demand for public housing. The public rental housing (PRH) development at ex-KCMQ will provide about 860 flats for a population of about 2 400 whereas the proposed Home Ownership Scheme (HOS) development in Kiu Cheong Road East, Ping Shan will provide about 2 400 flats for a population of about 7 700.

6. To support the PRH development at ex-KCMQ site, we need to mitigate the traffic congestion problem in the locality. Currently, two road junctions along Kwai Chung Road during peak hours have approached their design capacities. To accommodate the anticipated increase in traffic flow, there is a need to improve the existing traffic related infrastructure of the

area. We therefore propose to construct a new PTI at Container Port Road and improve two existing road junctions along Kwai Chung Road.

7. For the HOS development at Kiu Cheong Road East, Ping Shan, there are two existing PTIs within and adjoining the development site, with one located at Kiu Fat Street and another at Ping Ha Road. To provide land for the HOS development, we need to vacate the PTI at Kiu Fat Street and reconstruct the existing PTI at Ping Ha Road so as to accommodate all the public transport services in the two existing PTIs as well as to meet the additional demand arising from the HOS development. Besides, with the increase of population arising from the HOS development, we also propose to construct a footbridge with a pedestrian lift across Ping Ha Road which links to Tin Shui Wai West Rail Station. The footbridge will enhance the accessibility to the West Rail station, pedestrian connectivity in the vicinity, and safety of pedestrians by segregating them from vehicles at the busy Ping Ha Road.

8. To tie in with the population intake of the public housing developments at Kwai Chung and Ping Shan, there is a need to complete the construction of the PTIs and the associated works in a timely manner. We therefore plan to entrust the design and construction of the proposed works under **B080TI** and **B081TI** to the HA to ensure proper coordination with the adjoining public housing developments. Upon completion of the construction works, the PTIs, footbridge and associated facilities will be handed over to relevant departments for management and maintenance.

PROJECT ESTIMATE

9. Both **B080TI** and **B081TI** were upgraded to Category B in September 2013. We estimate the capital cost of the proposed works in Kwai Chung under **B080TI** and in Ping Shan under **B081TI** to be \$72.7 million and \$602.2 million in money-of-the-day prices respectively.

PUBLIC CONSULTATION

10. For the proposed works of **B080TI**, we -
- (a) consulted the Traffic and Transport Committee (T&TC) of Kwai Tsing District Council on 13 December 2012. Members supported the proposal; and

- (b) gazetted the road scheme under the Roads (Works, Use and Compensation) Ordinance (Cap. 370) on 6 June 2014 and no objection was received. The authorization notice was subsequently gazetted on 5 September 2014.

11. For the proposed works of **B081TI**, we -

- (a) consulted the T&TC of the Yuen Long District Council on 23 May 2013 and 25 July 2013. Members noted the proposed works and suggested for an early implementation of the footbridge link. Members also requested the provision of a wet market and cooked food centre, which would be provided within the HOS development;
- (b) consulted the Advisory Committee on the Appearance of Bridges and Associated Structures¹ (ACABAS) on 17 September 2014. The ACABAS accepted the proposed aesthetic design in principle; and
- (c) gazetted the proposed works under the Roads (Works, Use and Compensation) Ordinance (Cap. 370) on 25 April 2014 and no objection was received. The authorization notice was subsequently gazetted on 18 July 2014.

WAY FORWARD

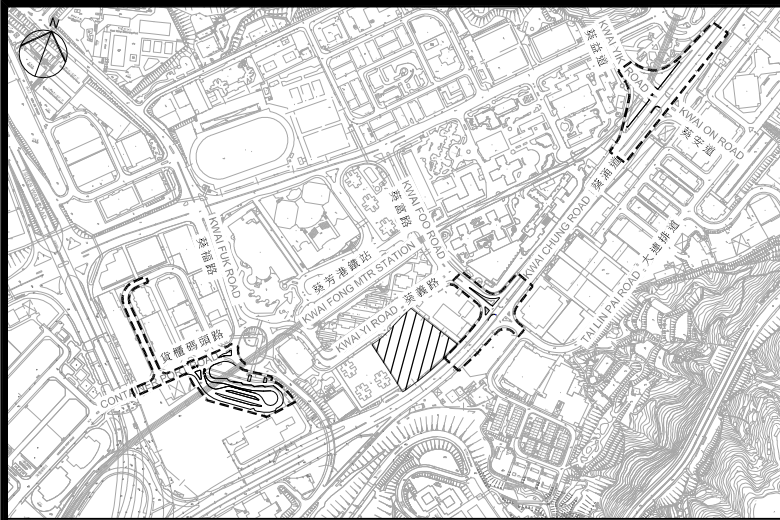
12. We plan to seek endorsement from the Legislative Council (LegCo) Public Works Subcommittee and funding approval of the LegCo Finance Committee in December 2014 and January 2015 respectively for upgrading **B080TI** and **B081TI** to Category A.

¹ The Advisory Committee on the Appearance of Bridges and Associated Structures, which comprises representatives of the Hong Kong Institute of Architects, the Hong Kong Institution of Engineers, the Hong Kong Institution of Planners, an academic institution, Architectural Services Department, Highways Department, Housing Department and Civil Engineering and Development Department, is responsible for vetting the design of bridges and other structures associated with the public highway system, including noise barriers and semi-enclosures, from aesthetic and visual impact points of view.

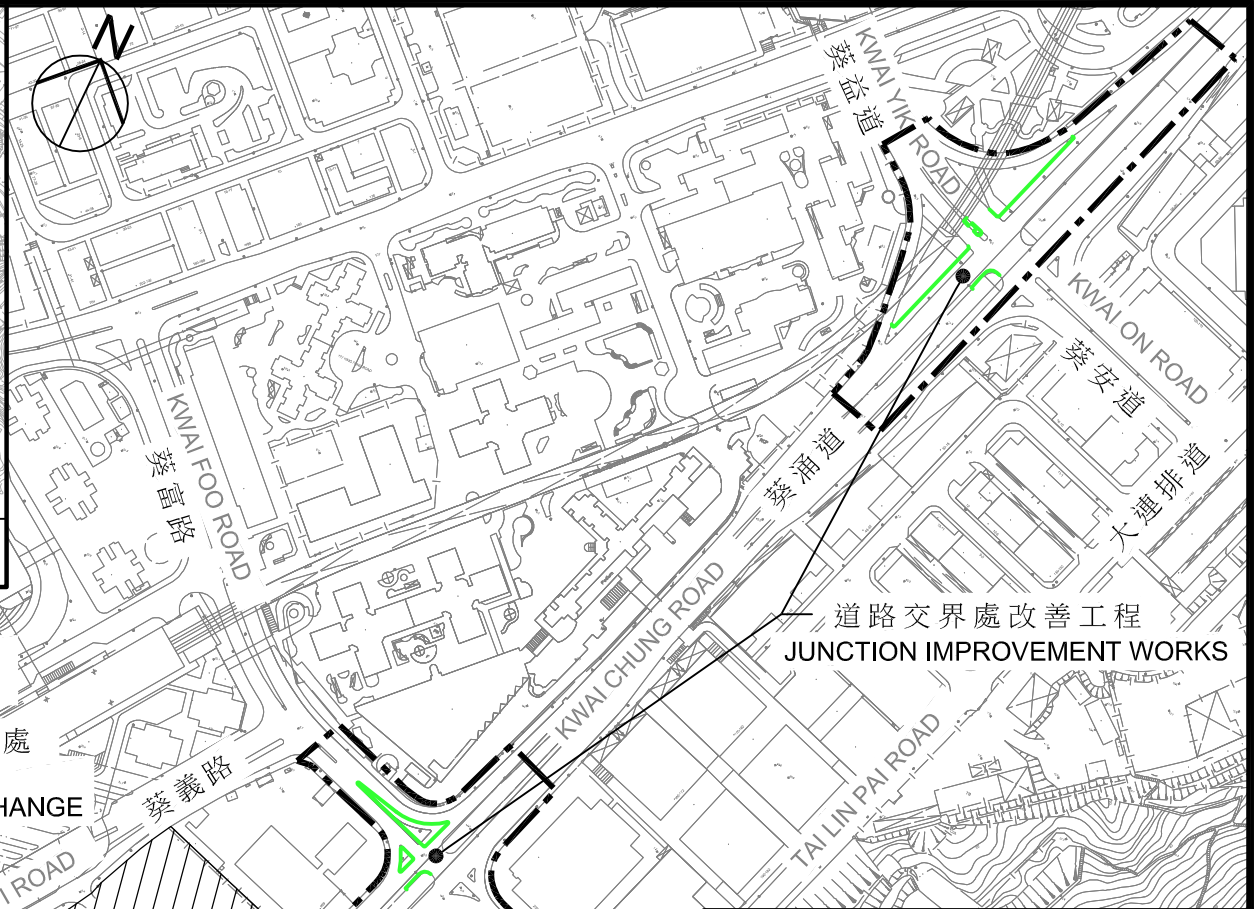
ADVICE SOUGHT

13. Members are invited to support the funding proposal for the proposed works.

**Transport and Housing Bureau
October 2014**



索引圖 KEY PLAN
比例 SCALE 1:12500





擬建的排水改善工程
PROPOSED DRAINAGE
UPGRADING WORKS

擬建公共運輸交匯處
PROPOSED PUBLIC
TRANSPORT INTERCHANGE

道路交界處改善工程
JUNCTION IMPROVEMENT WORKS

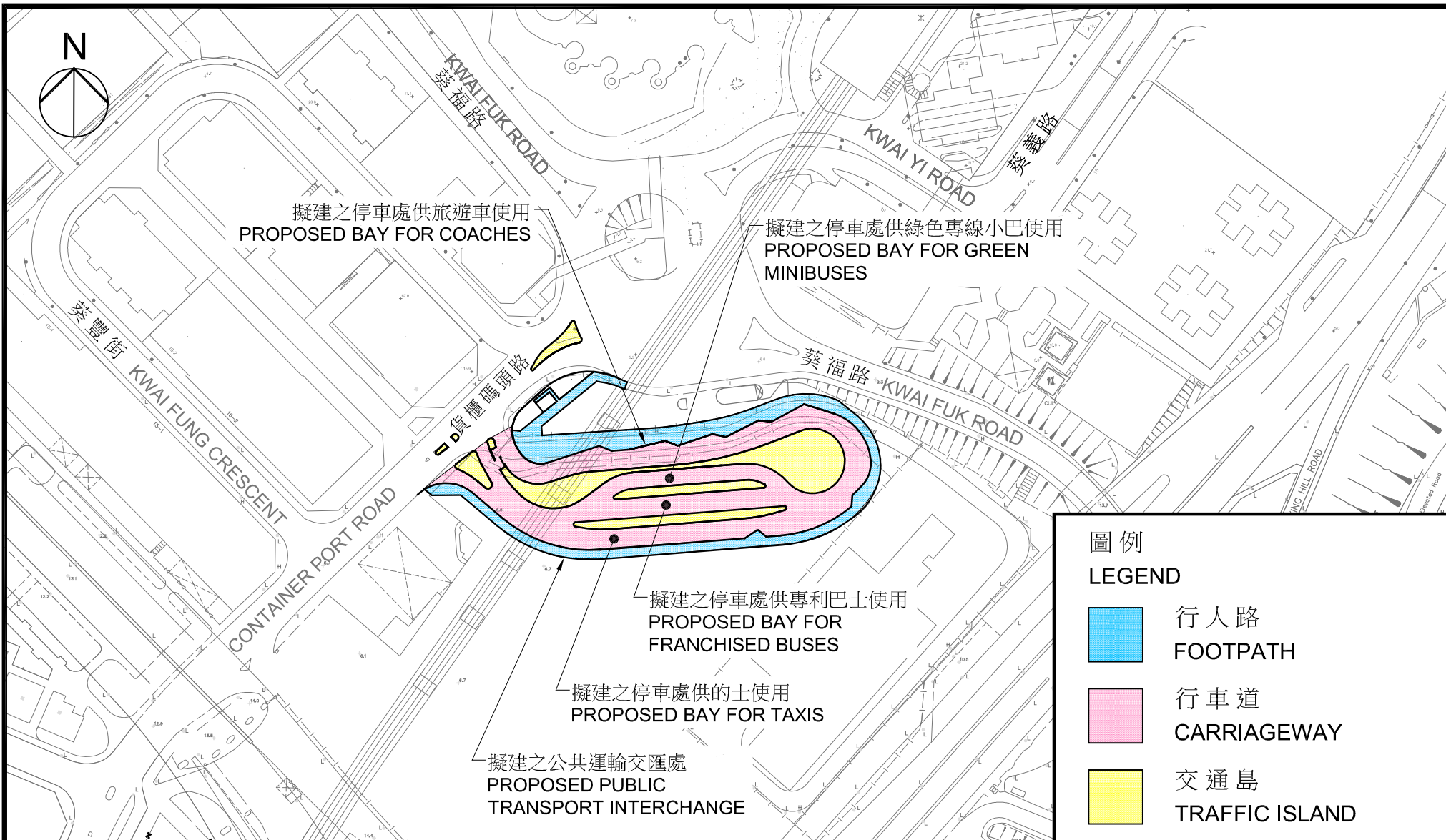
擬建的公共房屋發展
PROPOSED PUBLIC
HOUSING DEVELOPMENT

圖例
LEGEND

-  施工區界限
LIMIT OF WORKS AREA
-  擬建路邊線
PROPOSED KERB LINE

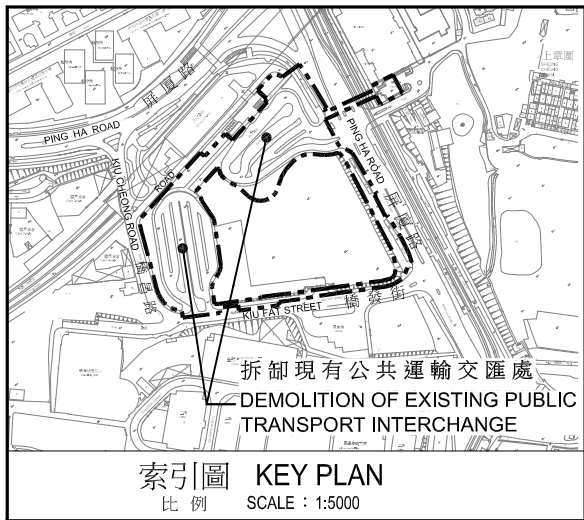
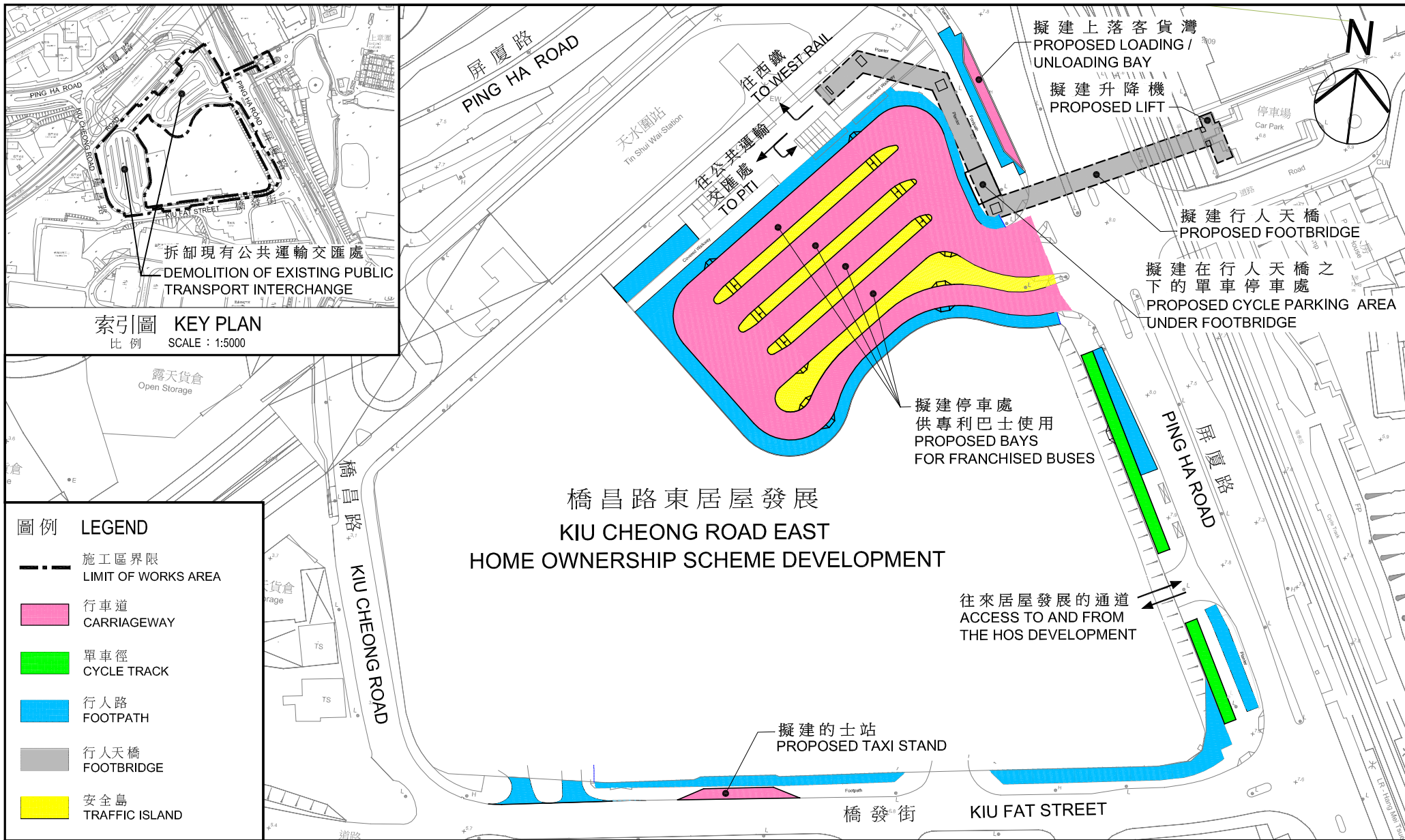
工務計劃項目編號 B080TI -
葵涌 - 貨櫃碼頭路的公共運輸交匯處及葵涌道道路交界處改善工程
PWP ITEM No. B080TI
PUBLIC TRANSPORT INTERCHANGE AT CONTAINER PORT ROAD AND
JUNCTION IMPROVEMENT WORKS ALONG KWAI CHUNG ROAD, KWAI CHUNG

工地平面圖
SITE PLAN
比例 SCALE 1:4000



工務計劃項目編號 B080TI
 葵涌 - 貨櫃碼頭路的公共運輸交匯處及葵涌道道路交界處改善工程
 PWP ITEM No. B080TI
 PUBLIC TRANSPORT INTERCHANGE AT CONTAINER PORT ROAD AND
 JUNCTION IMPROVEMENT WORKS ALONG KWAI CHUNG ROAD, KWAI CHUNG

工地平面圖
 SITE PLAN
 比例 SCALE 1:2000



圖例	LEGEND
	施工區界限 LIMIT OF WORKS AREA
	行車道 CARRIAGEWAY
	單車徑 CYCLE TRACK
	行人路 FOOTPATH
	行人天橋 FOOTBRIDGE
	安全島 TRAFFIC ISLAND

橋昌路東居屋發展
KIU CHEONG ROAD EAST
HOME OWNERSHIP SCHEME DEVELOPMENT

工務計劃項目編號 B081TI
屏山橋昌路東公共運輸交匯處及相關工程
PWP ITEM NO. B081TI
PUBLIC TRANSPORT INTERCHANGE AND ASSOCIATED WORKS AT KIU CHEONG ROAD EAST, PING SHAN

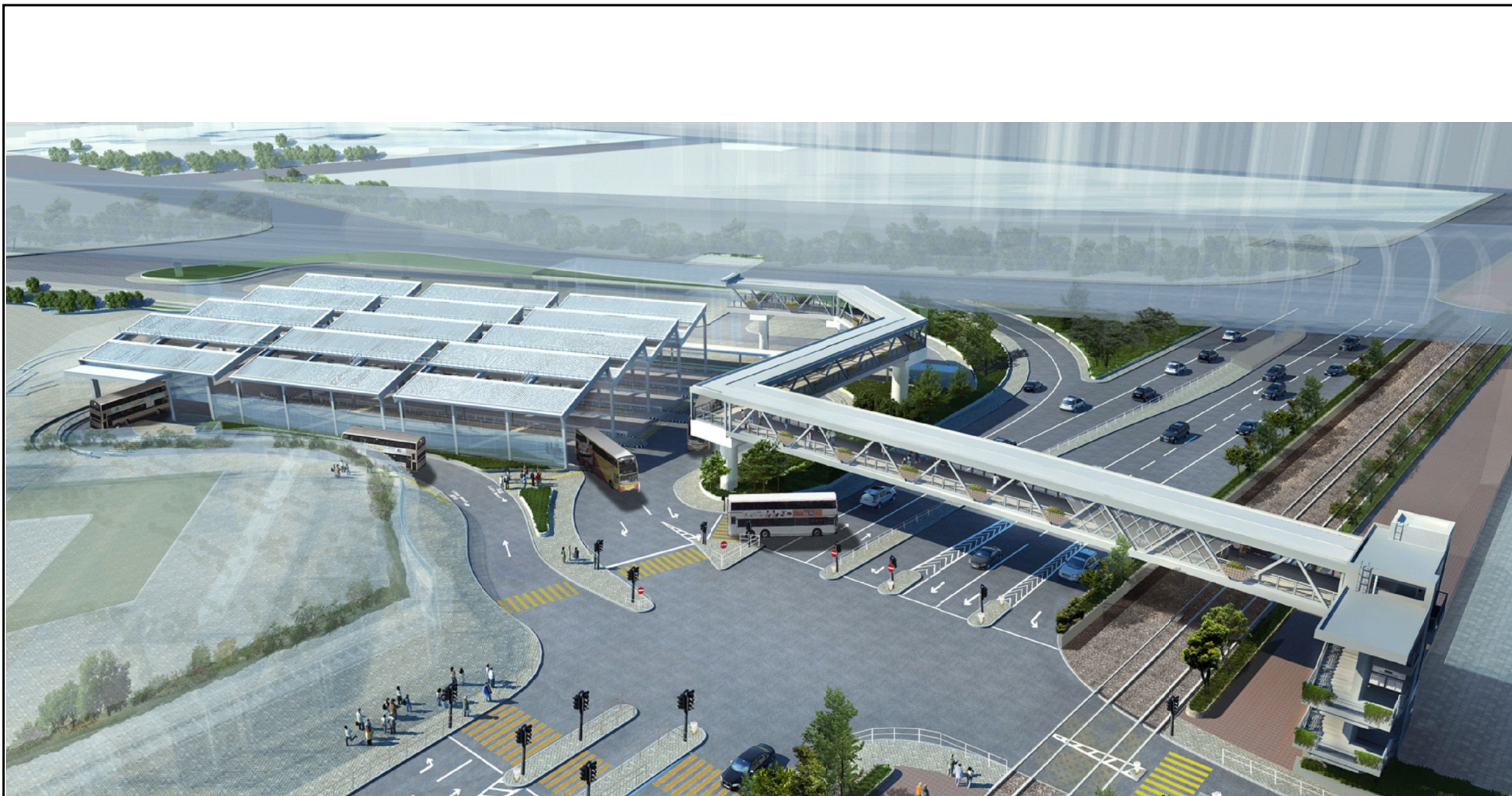
工地平面圖
SITE PLAN
比例 SCALE: 1:1500



工務計劃項目編號 B081TI
屏山橋昌路東公共運輸交匯處及相關工程
PWP ITEM NO. B081TI

PUBLIC TRANSPORT INTERCHANGE AND ASSOCIATED WORKS AT KIU CHEONG ROAD EAST, PING SHAN

構思圖
Artist's Impression
Drawing



工務計劃項目編號 B081TI
屏山橋昌路東公共運輸交匯處及相關工程
PWP ITEM NO. B081TI

PUBLIC TRANSPORT INTERCHANGE AND ASSOCIATED WORKS AT KIU CHEONG ROAD EAST, PING SHAN

構思圖
Artist's Impression
Drawing